

# SERVICE LEARNING PROJECT

## Flatbush Community





# TEAM MEMBERS

**Dimitri Langevine**

**Sheila Ofori**

**Stephanie Novembre**

**Krystella Tan**

**Natalie Neptune**

**Nadeen Burke**

---



# Housing & zoning

- Flatbush is in Central Brooklyn
  - Very large and is part of two community District zones 14 and 17.
  - The architecture consists of a lot of Victorian era houses.
  - There are also low rise brown stone apartment buildings in areas.
  - The majority of houses are 1-2 families with little front and backyard space.
  - There buildings are well kept without any signs of disrepair.
-



# Housing & zoning



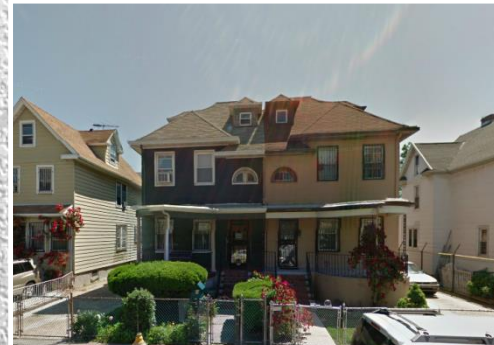
**Victorian single Family**



**Flatbush Gardens Houses**



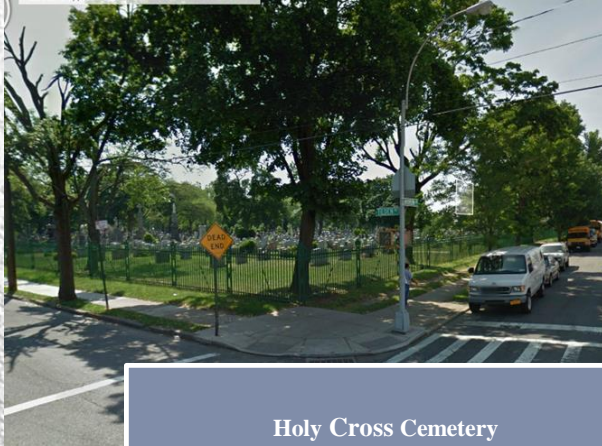
**Attached Brownstone Apartments**



**Two Family Houses**



# Open space



Holy Cross Cemetery



Tree lined Glenwood

- A lot of tree lined streets.
- Two small public parks and a large cemetery



Wingate park



# Boundaries

## Flatbush is bounded by:

- Prospect Park to the north,
- Avenue H to the south,
- New York Avenue to the east,
- Coney Island Avenue to the west.





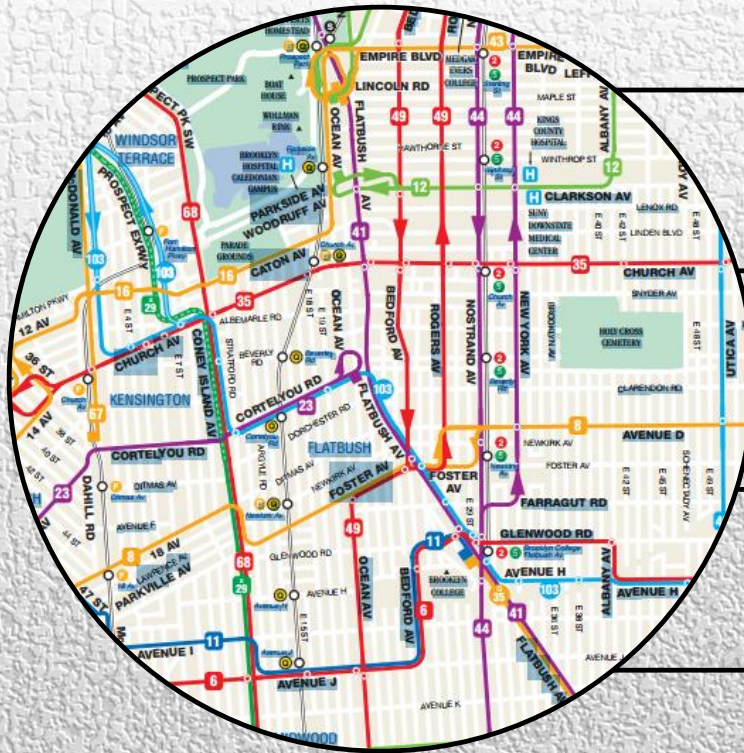
# Commons

There are four major commercial streets that a lot of business and commercial activities occur;

- Flatbush Avenue,
  - Coney Island Avenue,
  - Church Avenue
  - Nostrand Avenue.
-



# Transportation



2&5  
Trains



B&Q  
trains



MTA  
Buses



Dollar  
Cabs

Three types of Public transportation



# Service centers

Services	Number
Libraries	6
Police precincts	2
Engine companies,	5
Chemical dependency programs,	3
Residential mental health services	8
Residential developmental disabilities services	19
Senior centers	11
Food programs and drop-in centers.	25



# Stores

Flatbush Junction is the most popular area for shopping



Target



Restaurants



Transportation Hub

There is a Target, Party City, Applebee's and other popular stores, and it a major transportation intersection.

---



# Street people

- People on the street are usually; people commuting to and from work, children walking to and from school, vendors selling on busy sidewalks.





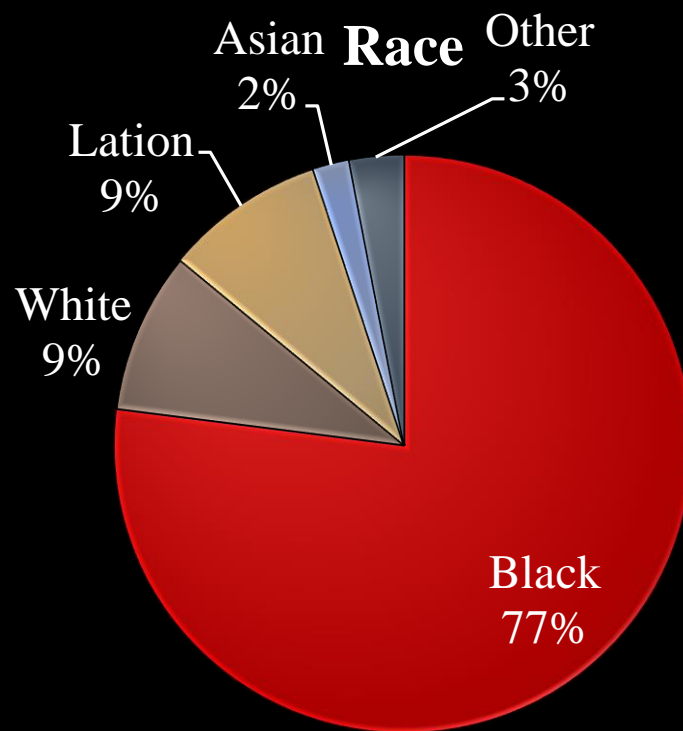
# Signs of decay

The neighborhoods in this community are free of garbage and abandon houses. The only areas with mechanic shops have cars parked on the sidewalks and add a little disorder.

---



# Race





# Ethnicity

## There are three distinct ethnic areas in Flatbush:

- Jewish population to the south.
- Haitians centered on Flatbush Avenue and Newkirk Ave.
- The West Indians around Church Avenue.

### JEWISH



*Synagogues, schools and stores in Hebrew*

### HAITIAN



*Creole names on stores & Churches*

### CARIBBEAN



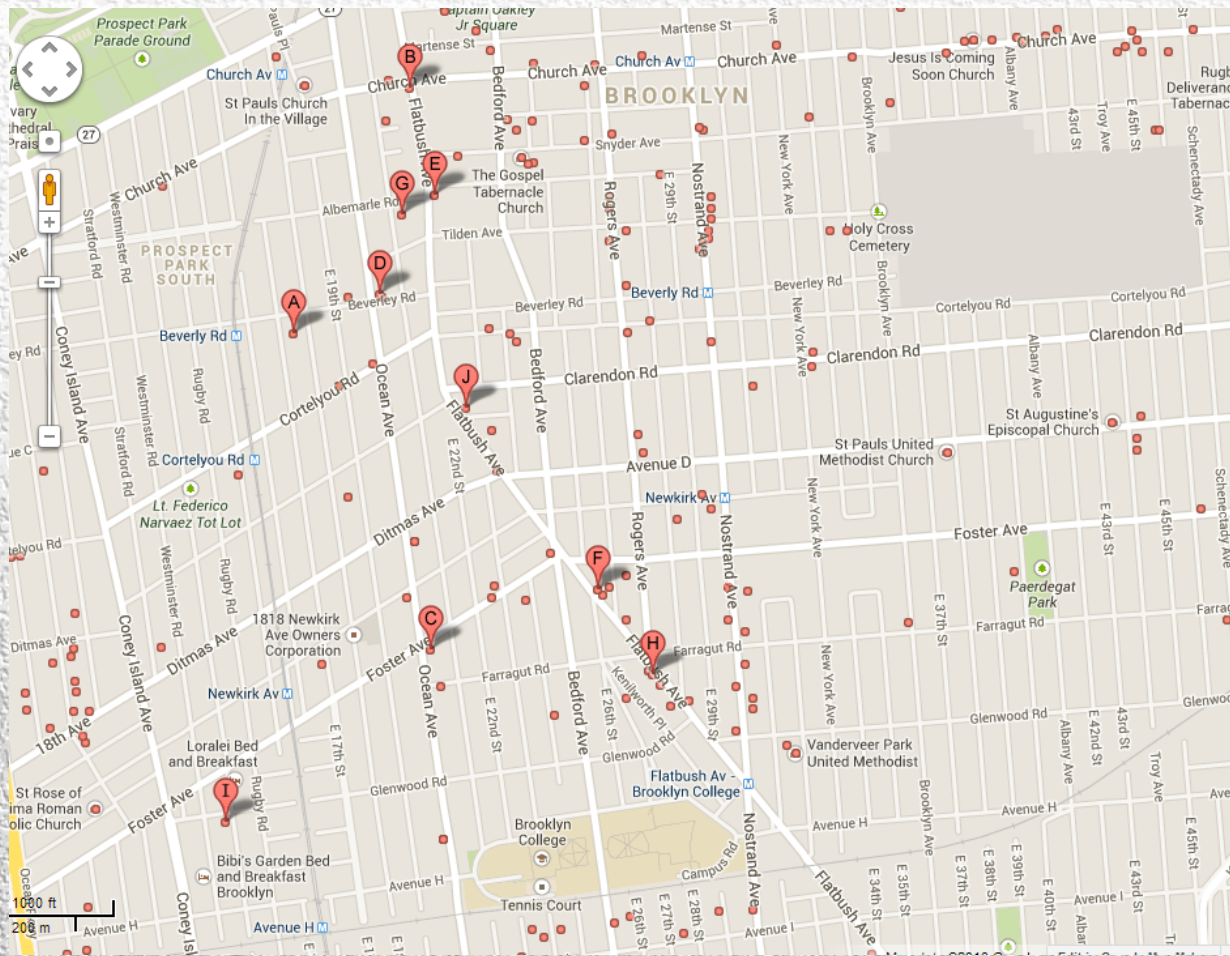
*Caribbean stores and eateries with displayed flags*



# Religion

- There are two clearly distinguished religions. The symbols of the Jewish religion are easily distinguishable. There are numerous churches in the community suggesting a major belief in Christianity, but with multiple denominations. There are also few symbols of the Islamic faith as well.
-





**Google Map of churches in Flatbush area of Brooklyn**



# Health and morbidity

- Three Hospitals: Kings County, Kingsbrook Jewish, & Down State.
- More than 1 in 4 adults in Flatbush are obese, and more than half of adults report that they do no physical activity at all.
- Mothers in Flatbush are less likely to get timely prenatal care and babies in Flatbush are more likely to be born with low birth weight than in NYC overall.
- Flatbush has elevated rates of sexually transmitted infections (NYC.gov).





# Politics

Politics is not so evident in the community with the exception of a few Obama/Biden placards in windows from the past presidential election.





# Media

- Residents can be seen reading the local newspapers during their commute in the mornings.
  - The younger generation is usually using their mobile phones. Bodegas and delis carry the local newspapers.
  - Magazines are found in certain stores like pharmacy's and grocery stores.
-



**THE END**

