



ARCH 2430

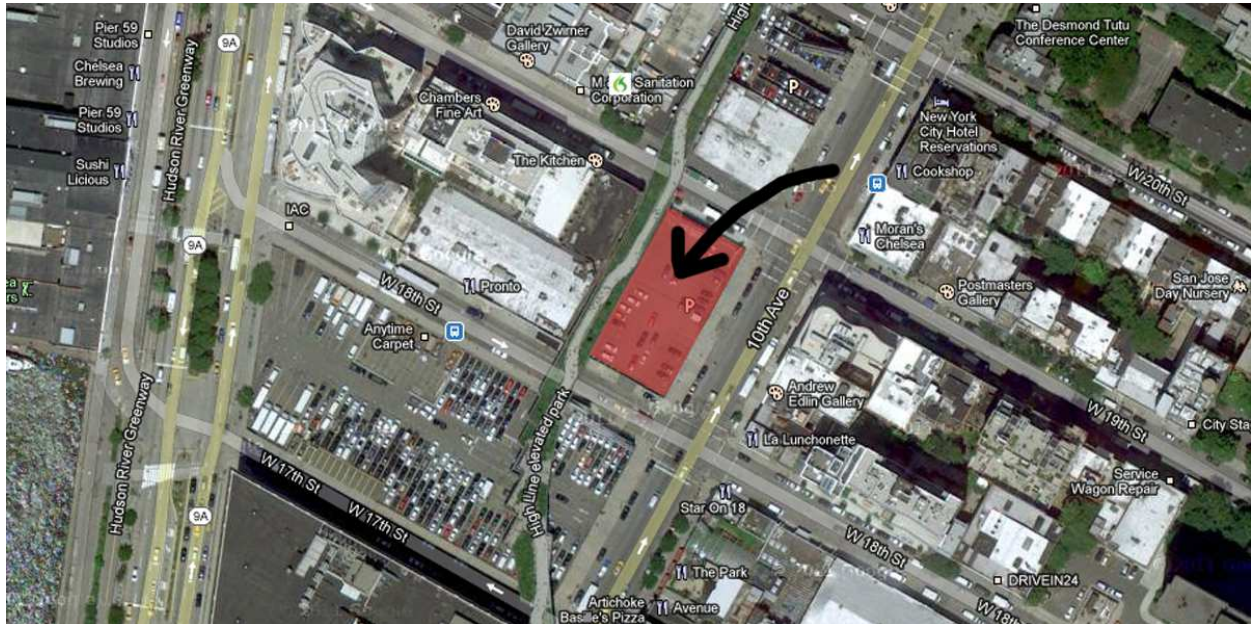
BUILDING TECHNOLOGY IV

August 2012

SK 1, site drawings

Sketch Assignment

**Location:** 10th Ave. between 18th and 19th St.



**Media:**

Pencil (2B or similar) or pen on 11"x17" paper, with your title block

**Assessment:**

Visit the site to make at least two to four sketches of the site conditions. Sketch these drawings directly on your title block sheet or scan and then placed on your title block sheet. Include in your sheet number that this is a **SK** drawing.

**Considerations:**

When you're selecting the place to sketch consider the view selection carefully so that it expresses as much important information as possible. Examine the context of the building what are the neighboring buildings, places and structures like. Check if there any particularly interesting or dramatic what views of the site from a distance. Investigate the buildings adjacent to your site consider drawing their elevations.

Consider making lots (8+) of quick sketches to study relationships instead of long detailed sketches.

While you're visiting the site it's a good idea to document the conditions with photographs as well. You will find this a valuable resource when you drawing in sight context.