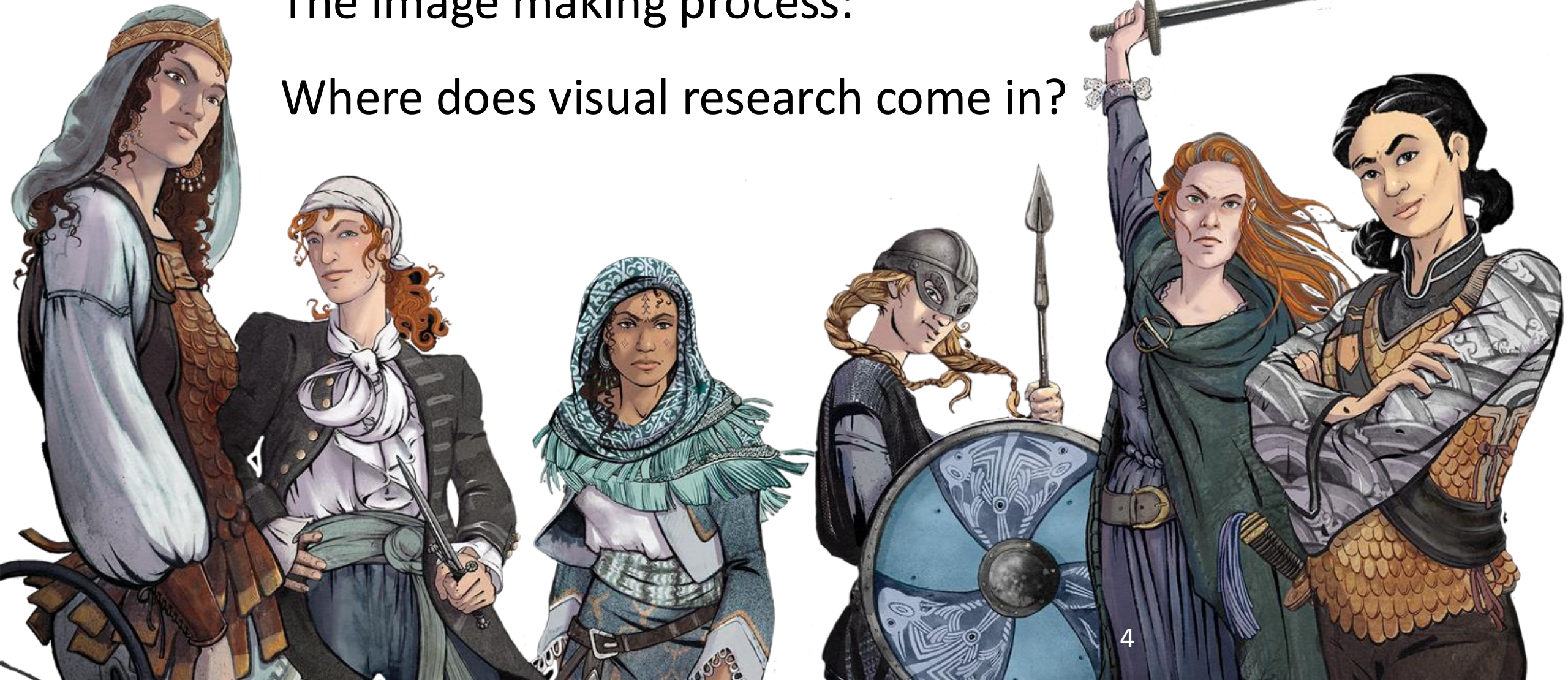


RESEARCH to RESULTS

CUNY Graduate Center
February 5th 2025

The image making process:
Where does visual research come in?



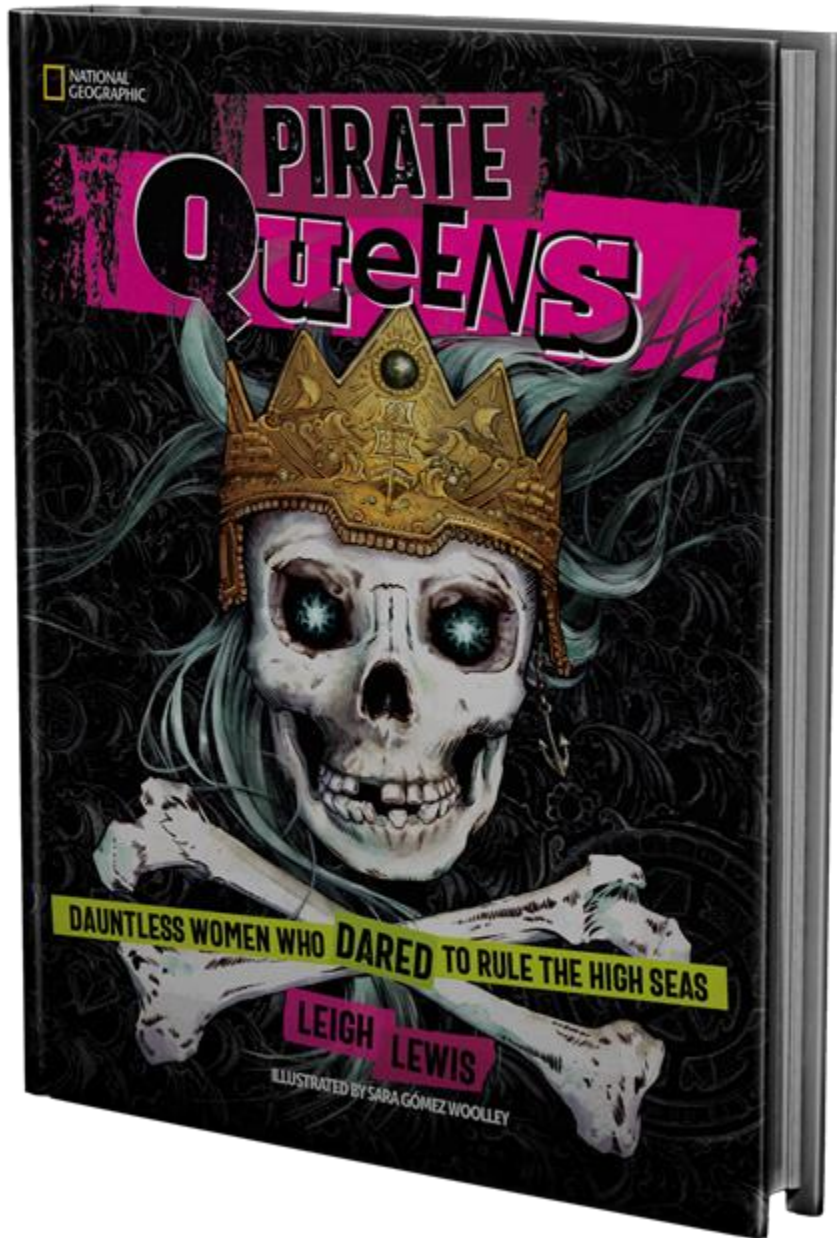
NATIONAL
GEOGRAPHIC

PIRATE Queens

DAUNTLESS WOMEN WHO DARED TO RULE THE HIGH SEAS

LEIGH LEWIS

ILLUSTRATED BY SARA GÓMEZ WOOLLEY



Pirate Museum in St Augustine



1

2

3

4

5

6

7

8

9

10

11

12

13

↑ silhouette
 ↑ PORTRAIT DRAWINGS
 COULD READ AS OLD
 PAPER / INK
 MONOCHROMATIC

↑ JOLLY
 ROGER -
 COULD READ
 AS FABRIC. OR
 READ SKILL +
 GOLD
 CROWN
 W/ ♀
 IN FRONT OF
 FABRIC.

↑ PIRATE QUEEN
 CARVED SHIP'S
 FIGUREHEAD PLUNGING
 THROUGH WAVES.
 SEEN FROM BELOW.

↑ WIND PATTERN + PIRATE OBJECTS
 BLACK SPOT GLOSS ON MATTE BLACK?

↑ FULL MOON, PIRATE SHIPS SUNK
 OVER OCEAN - FORM A "CROWN" OVER
 REFLECTED SKULL

↑ BANNER
 WIND WAVE ON
 IN OLD MAP

↑ CROWN OF PIRATE
 SHIPS
 SHIPS AROUND
 OCEAN SPINNING
 STAR SPINNING
 SKULL.

↑ DELICATE
 WAVES + SHIP
 SILHOUETTES

↑ PUNK ROCK JOLLY ROGER
 WITH SILHOUETTE OF SHIPS AS
 CROWN AND ♀ SWORDS

↑ SKULL WITH CROWN OF QUEEN
 PORTRAITS. (COULD USE BLACK
 FABRIC IDEA FROM #3 AS
 BACK-GROUND?)

↑ DETAILED
 GOLD CROWN
 W/ 6 SHIPS IN
 RELIEF AROUND
 BAND, ♀
 IN THE
 CENTER

↑ FLAMES
 LIGHT FEM
 SKULL
 +
 CROWN -
 LIKE GHOST
 STREET LIGHTING

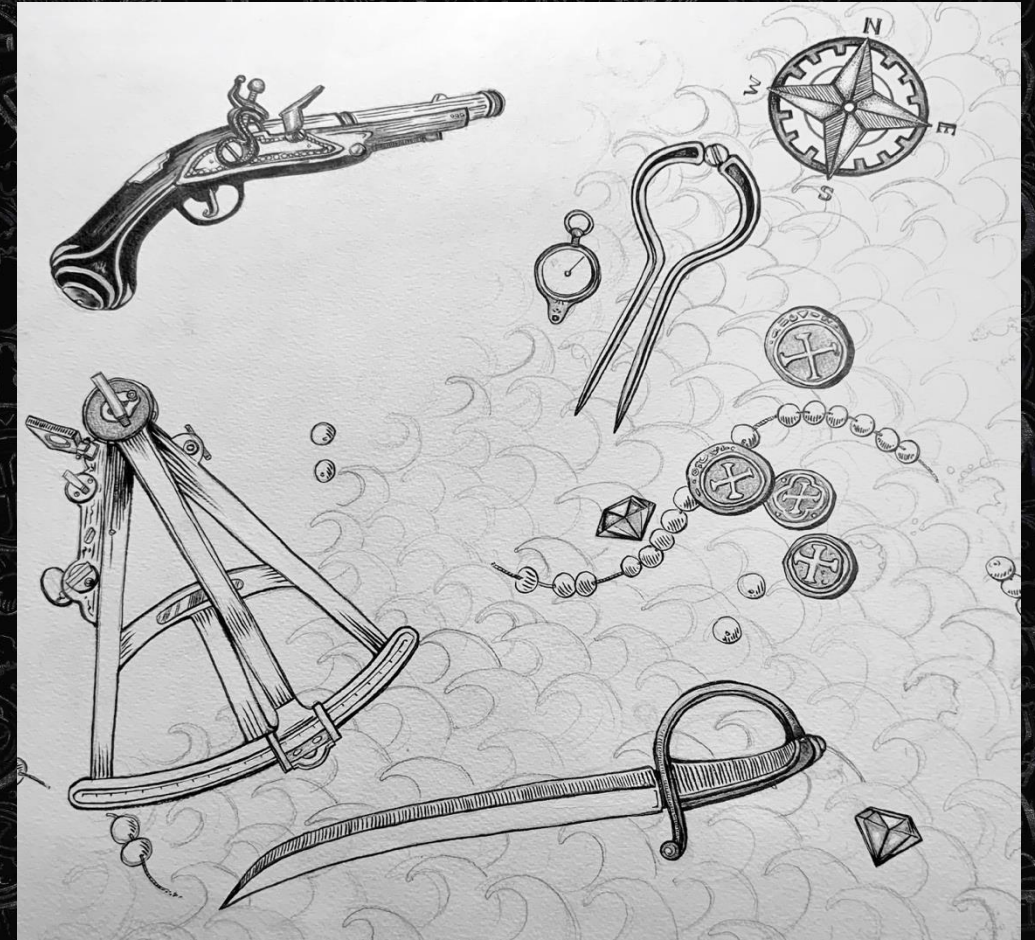
↑ FEMINE SKULL / UNDER
 WATER FEEL, ♀ SWORD IN
 TEETH / QUEEN PORTRAITS
 IN DELICATE FRAMES MATCH
 TO CROWN + PEARLS

↑ OR
 MORE LIKE
 A JOLLY
 ROGER
 W/
 FIGHTING
 QUEENS
 LIKE A
 MUSH
 PIT!

↑ FEM JOLLY
 ROGER W/ 6 QUEENS, PORTRAIT NO GAMES.



Cover Inks paintings



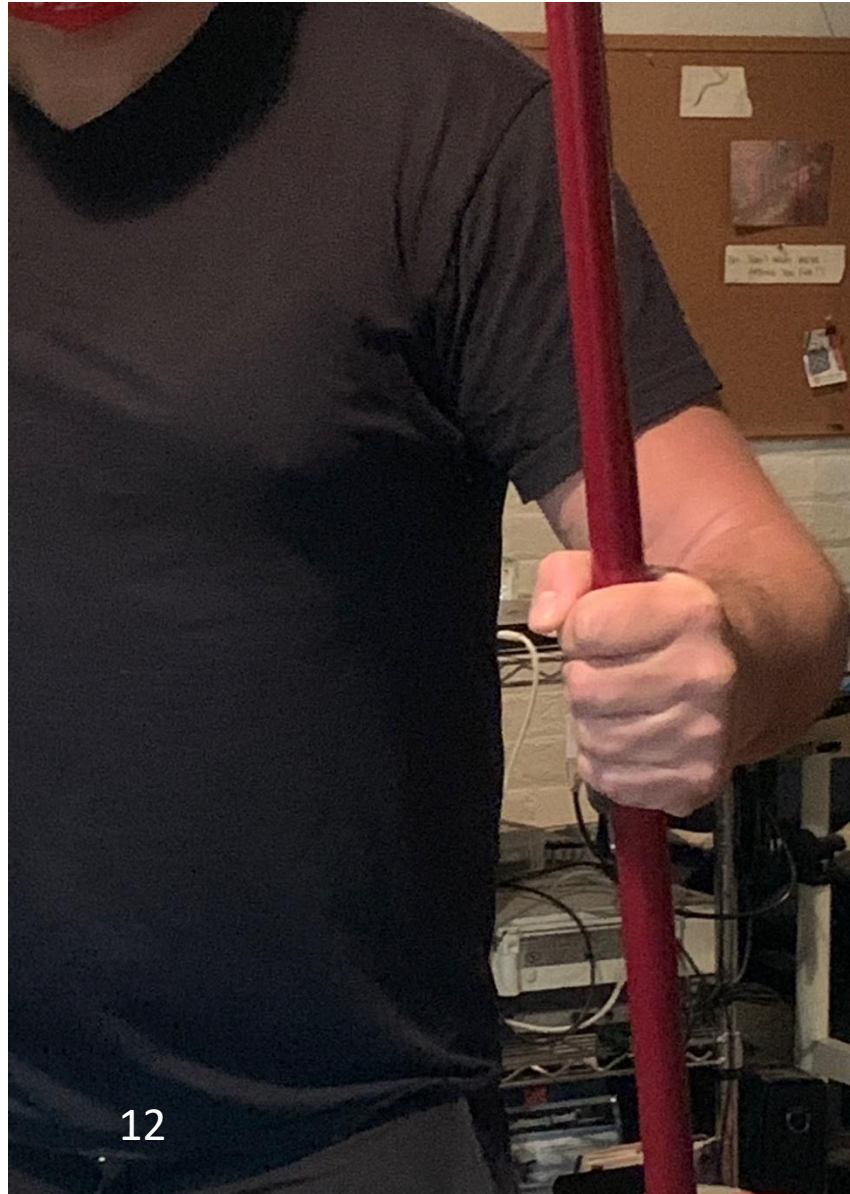
Foreground and Background were painted separately.

Final Cover Art











"Beads from Paviken, Gotland, ca. 750-850. This is a typical selection of beads from the site. The blue bead at the top left is a rare example that could be classified as being Ribe-style, suggesting that although traders may have been stopping at Paviken as early as the mid-700s, their visits were probably few and brief. The segmented beads at the top right show stronger connections to the early Viking Age towns of Hedeby and Åhus, where this style seems to have been a major import during the early 800s. The beads on the bottom with criss-crossed lines have long been associated with Birka, which was also growing at this time, although they appear in other places as well. But the red-and-black checkerboard at the right has few comparisons in other western collections, indicating that Gotlanders still tied into other trade routes pointing toward the centers of glass production in the Near East. (Gotlands museum, Visby, SE.)"
<https://textandtrowel.wordpress.com/2017/04/19/gotland-during-the-viking-age/>



Textile patterns from the much later Oseberg ship burial:
<http://www.forest.gen.nz/Medieval/articles/Oseberg/textiles/TEXTILE.HTM>

The apron overdress could be sewed closed at the sides or left open. The shoulder straps were anchored at the back of the dress and pulled over the shoulders to fasten at the front – they would be fastened with oval or tortoise brooches. Sometimes the two straps would be linked by a chain or a string of glass beads, sometimes not. These tortoise brooches are pretty ubiquitous, coming in a lot of styles, like these from the British Museum. They are typically bronze or perhaps silver, later on, and are covered with interlace or knotted design.



<https://www.bmimages.com/preview.asp?image=00032108001>

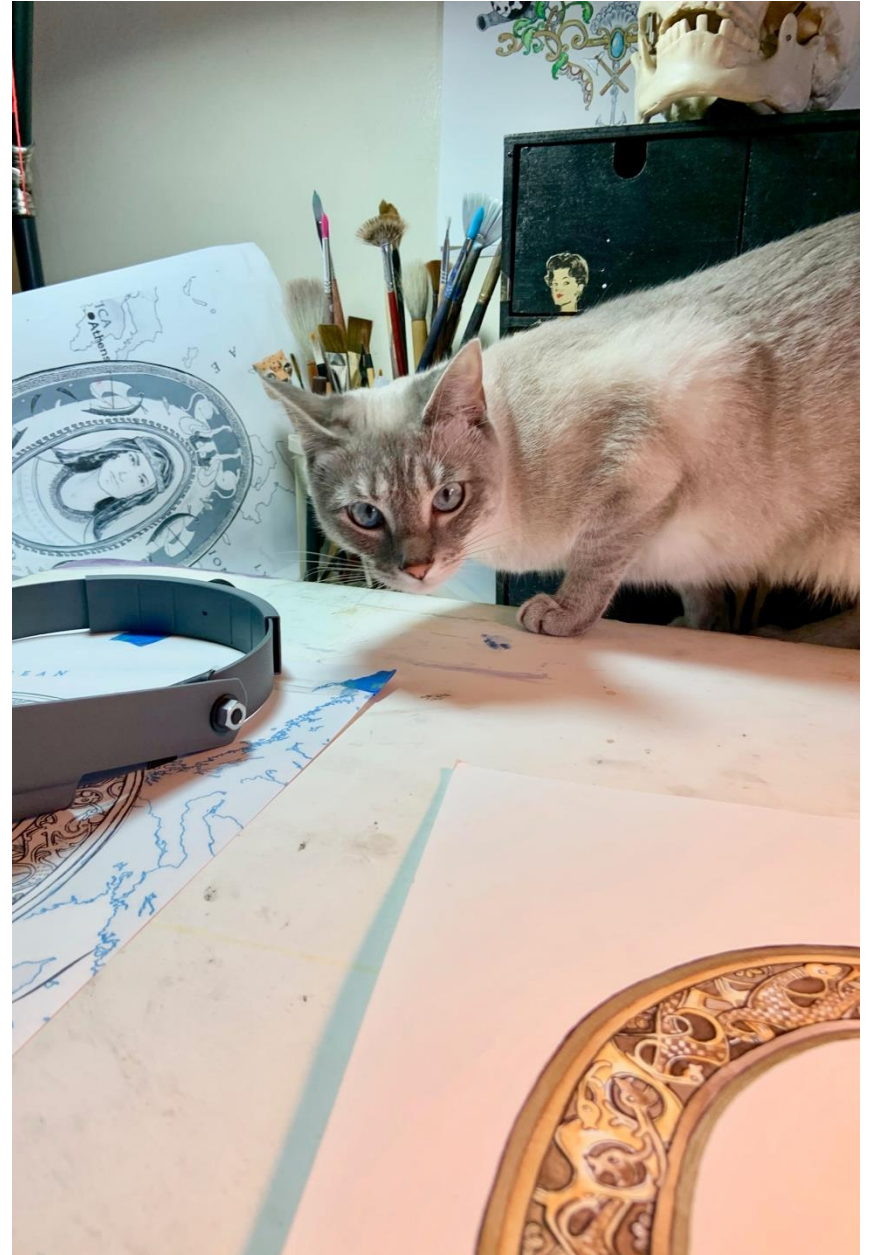
Other jewelry could vary with the age. Glass beads were very common – colors varied greatly by period, place, and wealth. The necklace below is early, pre-Viking Age, so closer to Sela:



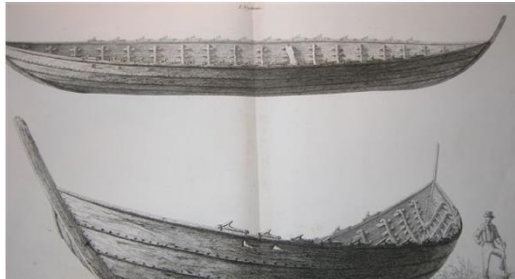


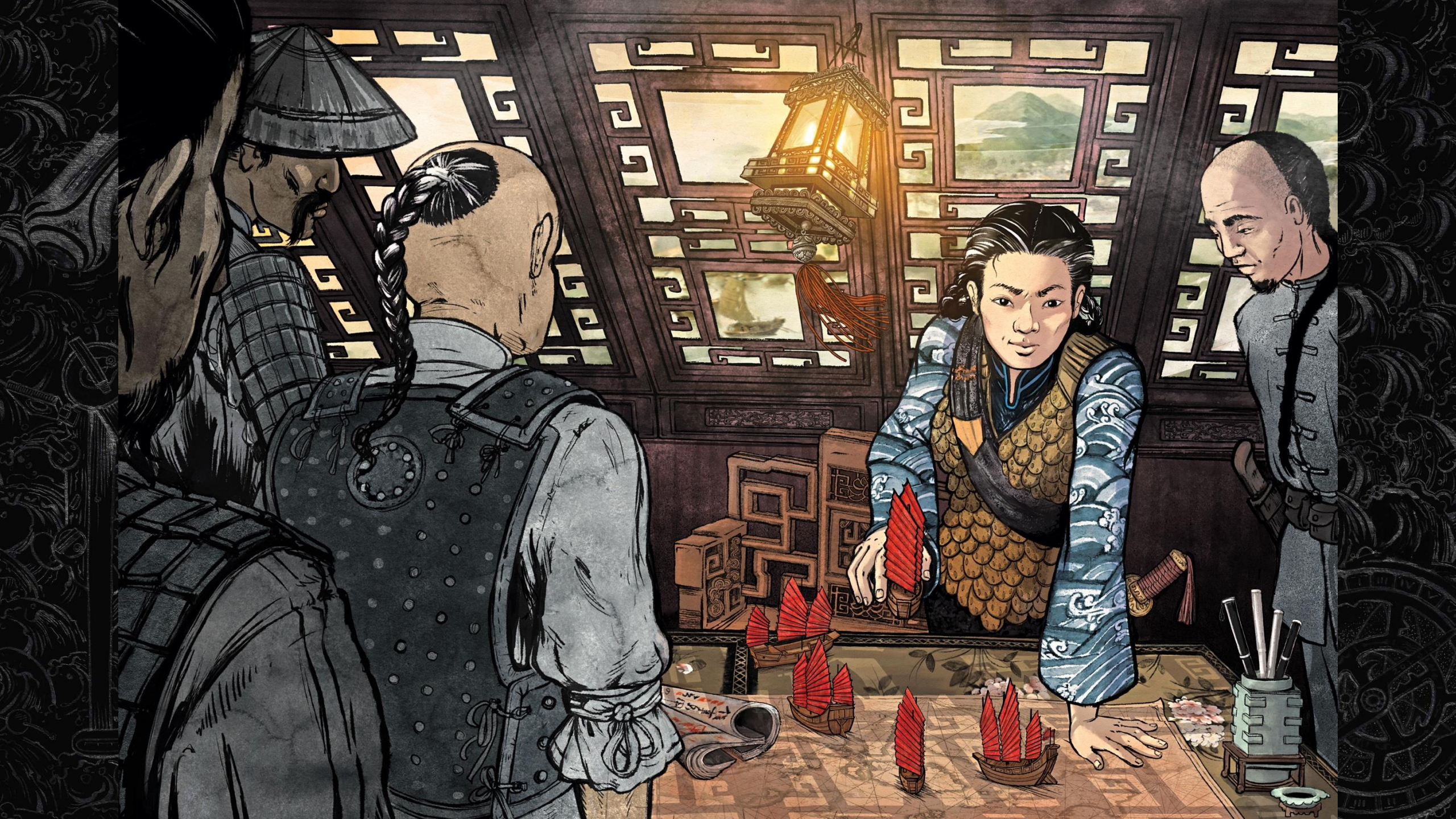
Light box
and head
gear

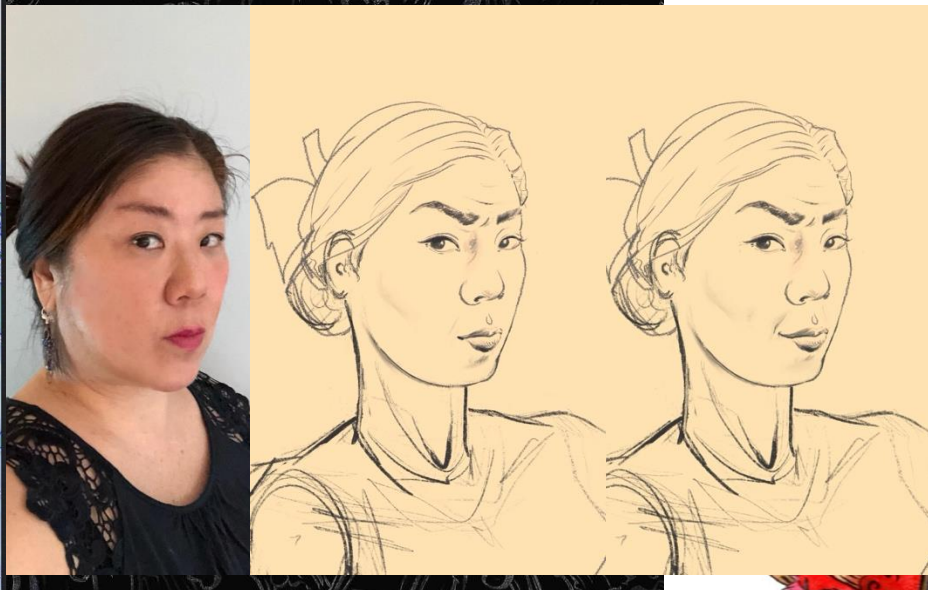
er late, ca. 834 CE, but well preserved decoration):
[a.org/wiki/Oseberg_Ship](https://en.wikipedia.org/wiki/Oseberg_Ship)

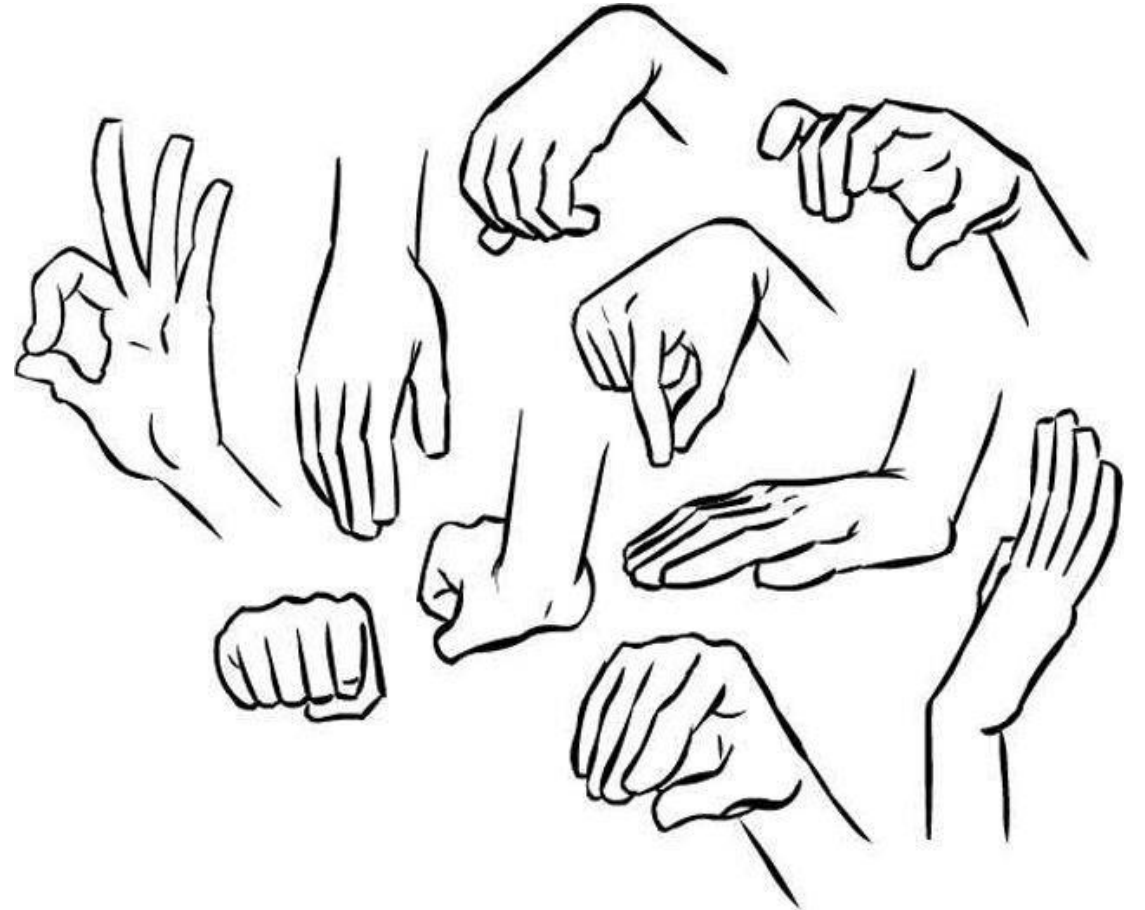


Nydam

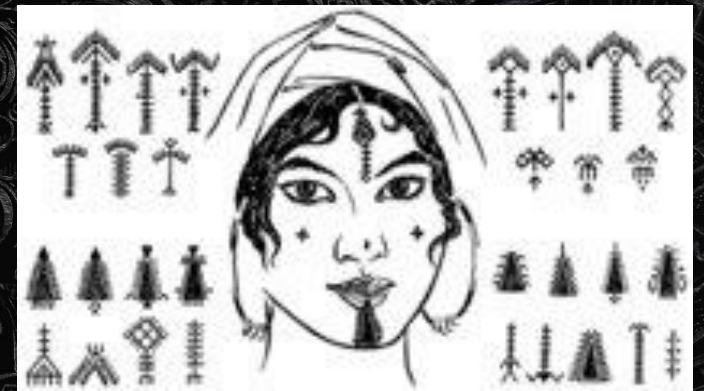
















On Site Research



Colombia 2012



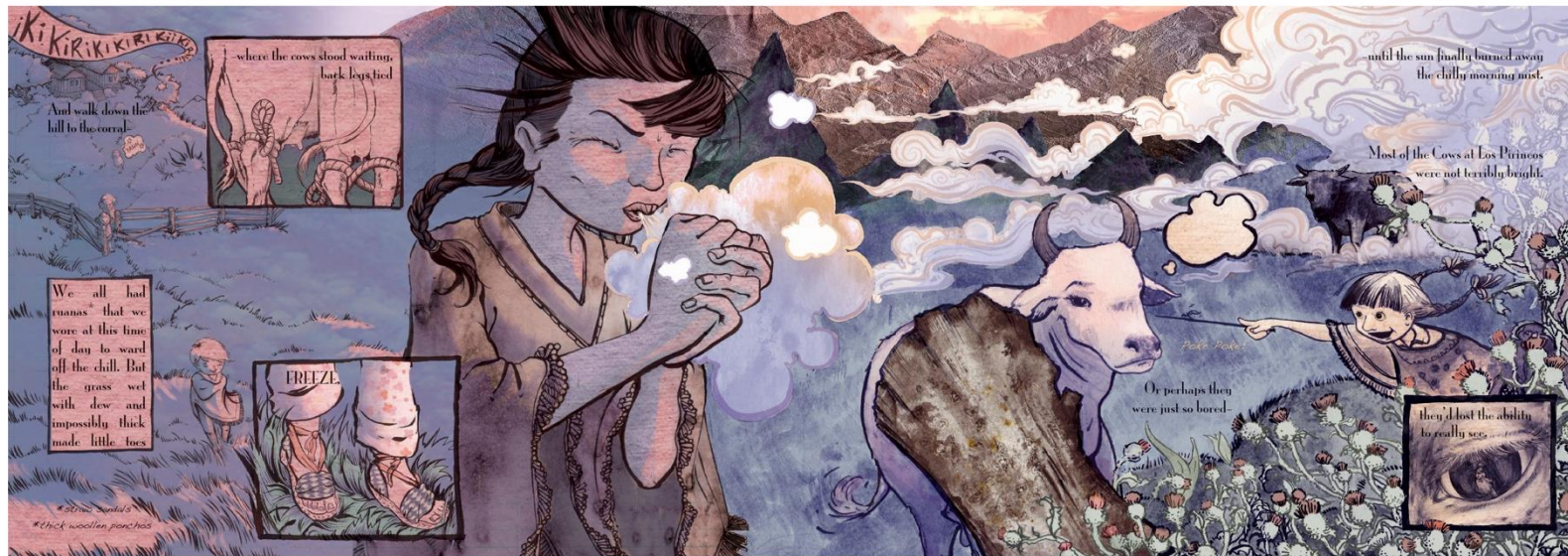




LOS PIRINEOS

the mostly true memoirs of Esperancita Gomez

By Leila Gomez Worth

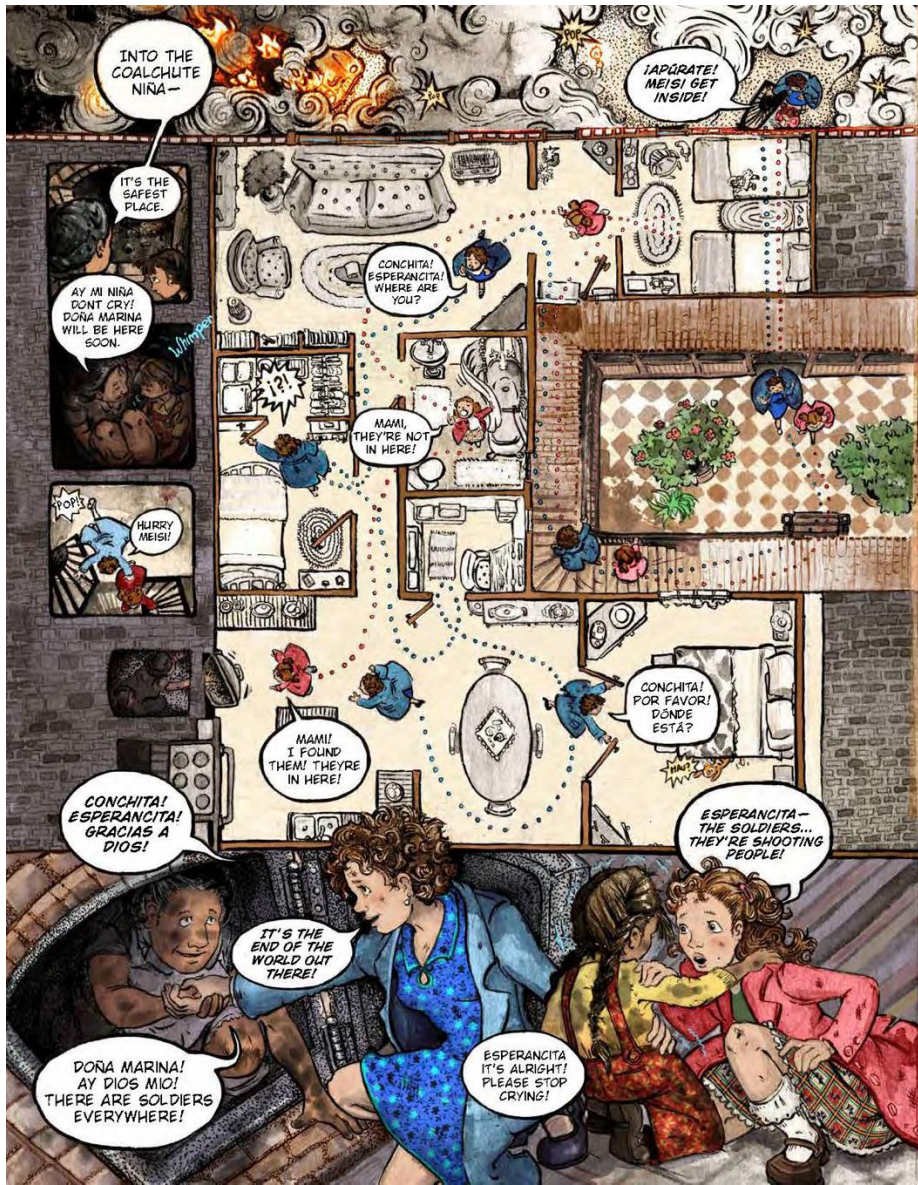




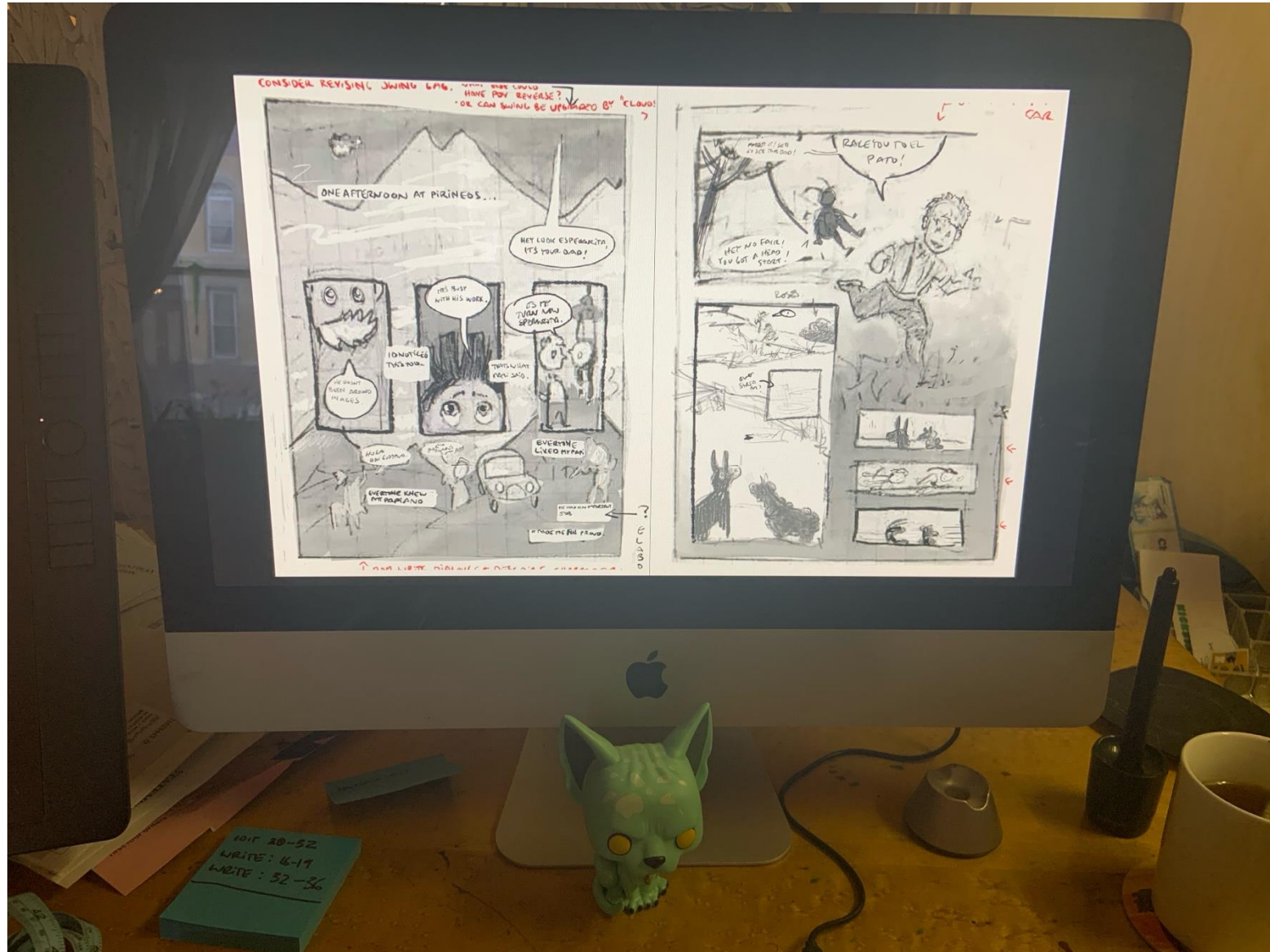
The 9th of April
El 9 de abril

A Los Pirineos Story

By Leila Esperanza Gómez
&
Sara Woolley Gómez





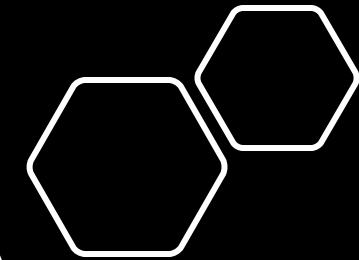
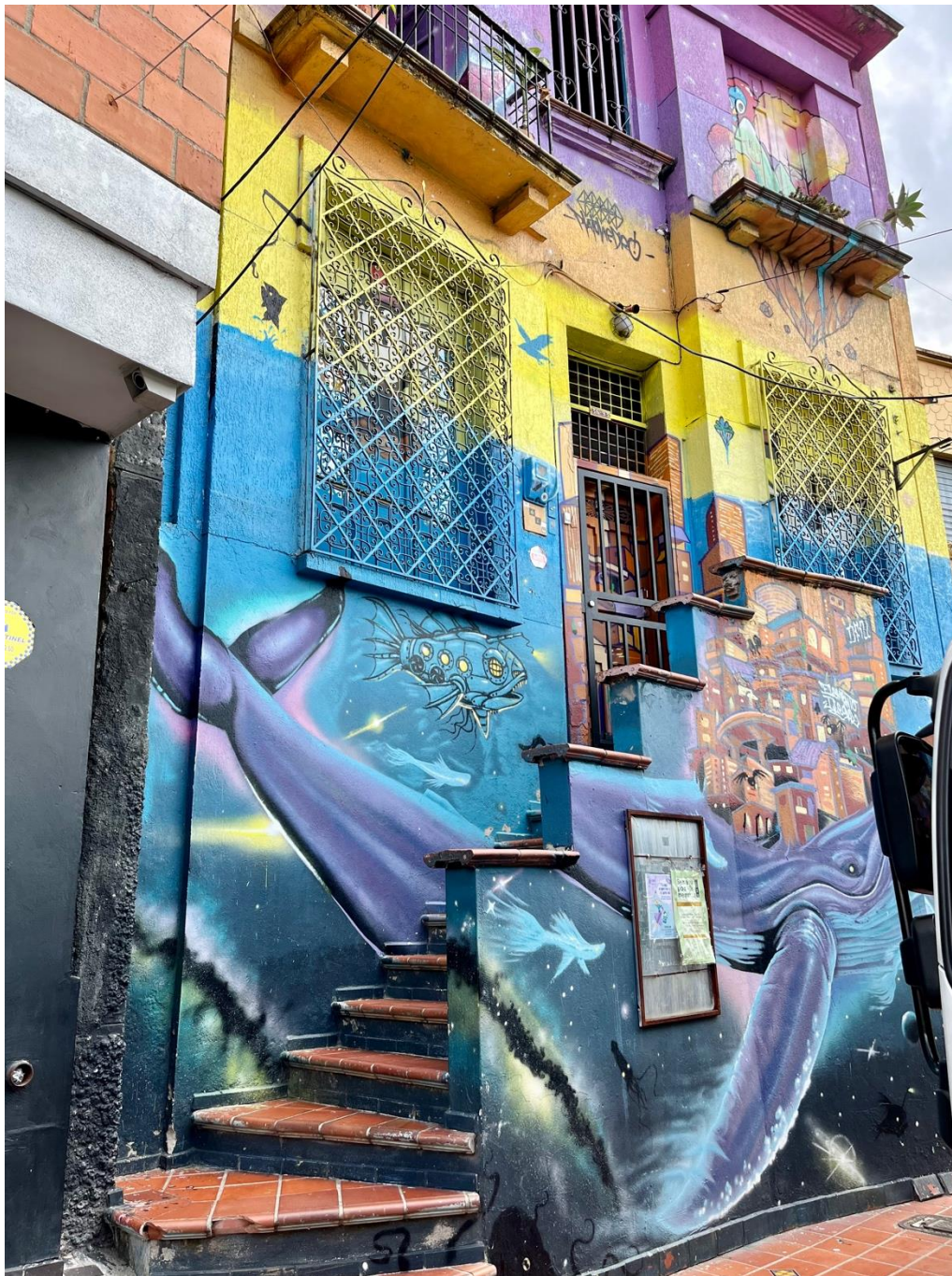


10/17 20-32
WRITE: 16-19
WRITE: 32-36

On Site
Research

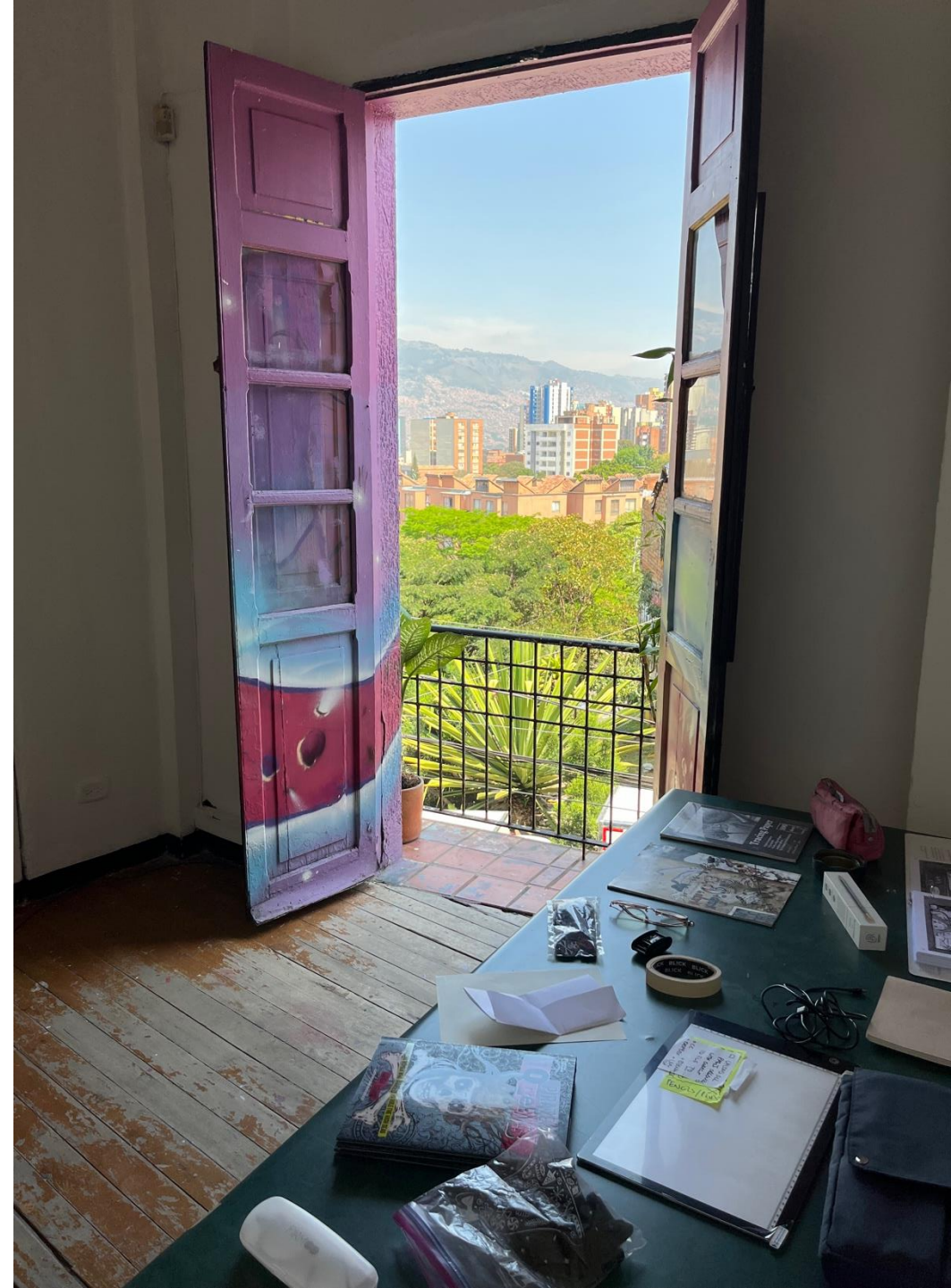
Colombia 2024

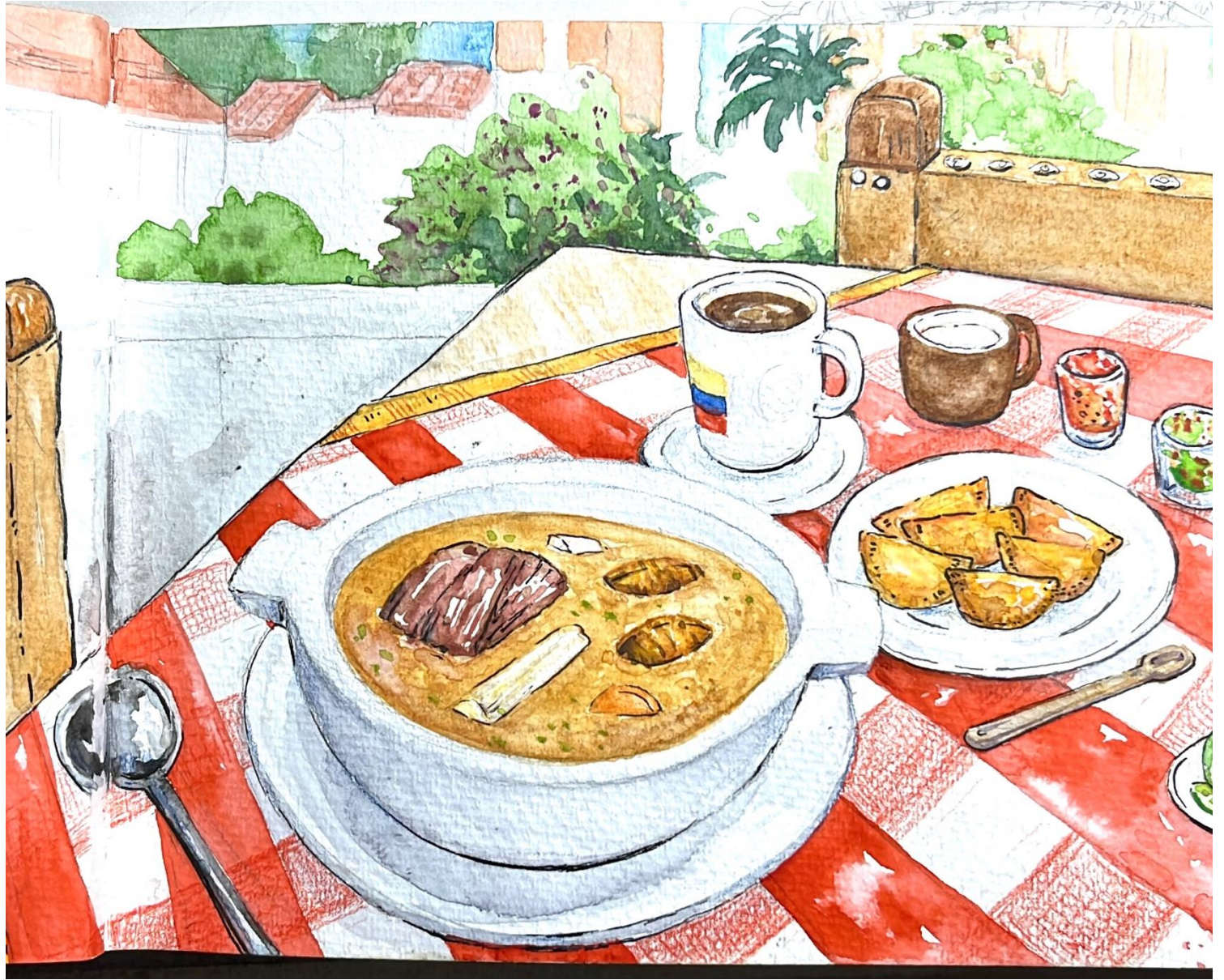




**PLATOHEDRO
MEDELLÍN**

- Biblioteca Publica Piloto*
- Santa Elena, Antioquía*
- Clase de la Cocina de Colombia
- Museo de la Memoria
- Jardín Botánico
- Parque Arví
- Museo de la Patria
- Salento, Quindío
- Jardín Antioquía





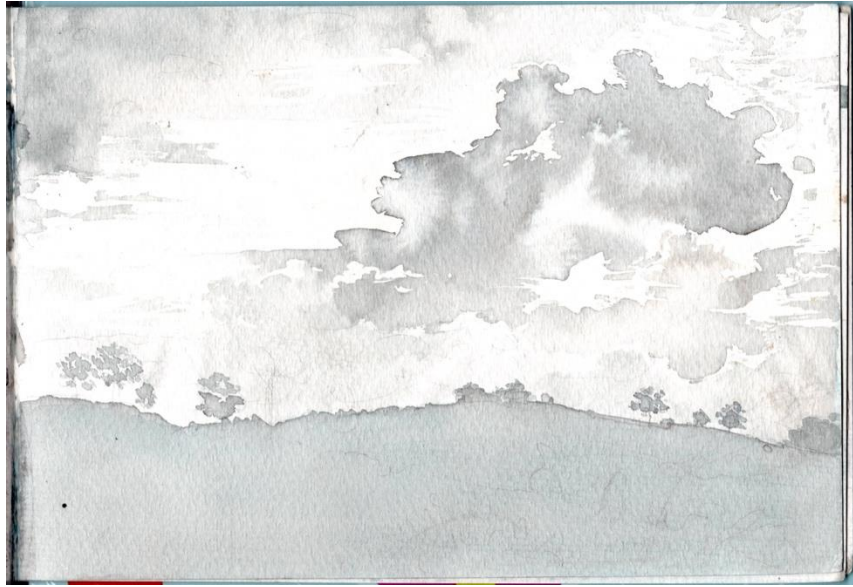






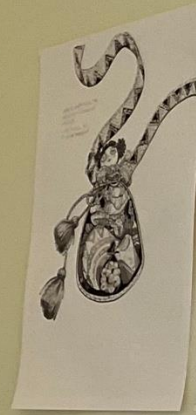














- The Highlights Foundation
- PLATOEDRO
- Chashama
- NYFA.org
- NALAC
- PSC CUNY
- KWELI Children's Conference



¡Muchas Gracias!

SARA GÓMEZ WOOLLEY

Illustration

Sequential Art

@saritajeanine

WWW.SARAWOOLLEY.COM

To learn more about my work
please join me in the Art Coop!