

# History of NYC Architecture

**1940-1970: Modernism**

**Pure Function, Pure Form**

# What is modern architecture?

- Louis Sullivan
- Frank Lloyd Wright
- Art Deco – Art Moderne
- International Style



- Condict Building/ later Bayard Building, Louis Sullivan, 1897-1899.





- Solomon R. Guggenheim Museum,  
Frank Lloyd Wright, 1956-9.  
Addition along east, Gwathmey Siegel &  
Associates, 1992.



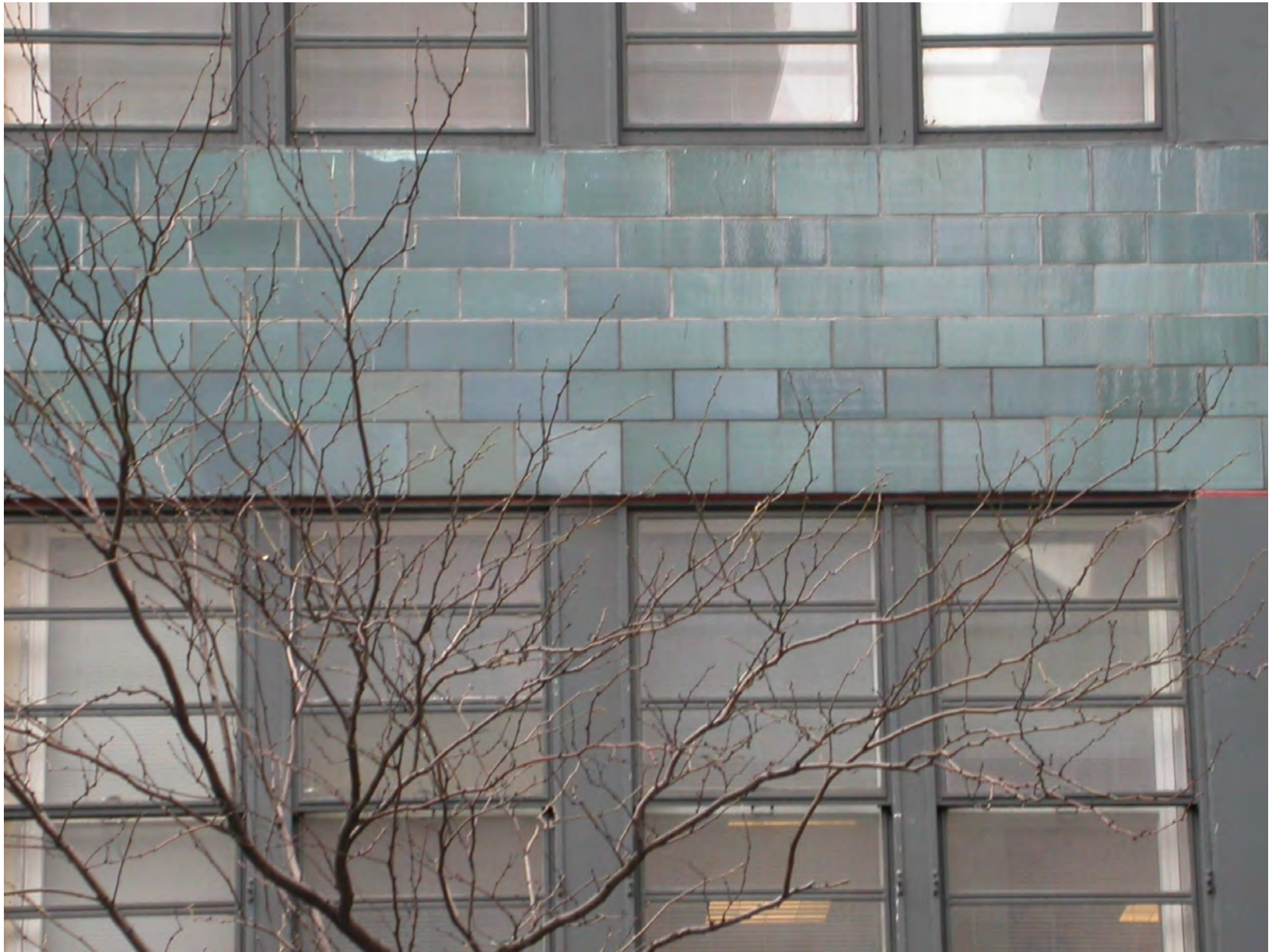


- McGraw Hill Building, Raymond Hood, Godley & Fouilhoux, 1930-1931.











- Lever House, Gordon Bunshaft of Skidmore, Owings & Merrill, 1952.



- Seagram Building, Ludwig Mies van der Rohe with Philip Johnson, 1958.

# The International Style

The term "International Style" had its origin in an exhibition organized at the Museum of Modern Art in 1932 by Henry Russell Hitchcock and Philip Johnson. The exhibit showed the work of European architects who attempted to create a pure architecture devoid of any reference to history.

# The International Style

## Characteristics

- High emphasis on structural expression
- Used modern materials- concrete, glass, and steel
- Rejected non-essential decoration
- First emphasis on horizontal with ribbon windows; later the curtain wall became bidirectional
- Box configuration
- Balance and regularity valued
- Cantilevers &/or ground floor piers frequently used
- Emphasized functionality
- Space was to be flexible, open.



- United Nations Headquarters, International Committee of Architects, Wallace K. Harrison, chairman with LeCorbusier of France, Oscar Niemeyer of Brazil, Sven Markelius of Sweden), 1947-1953.







- Lever House, Gordon Bunshaft of Skidmore, Owings & Merrill, 1952.





- Manufacturers Hanover Trust Company, Charles Evans Hughes III & Gordon Bunshaft of Skidmore, Owings & Merrill, 1954.





- Mobil Building (aka Socony Mobil Building)  
Harrison & Abramovitz, 1955.











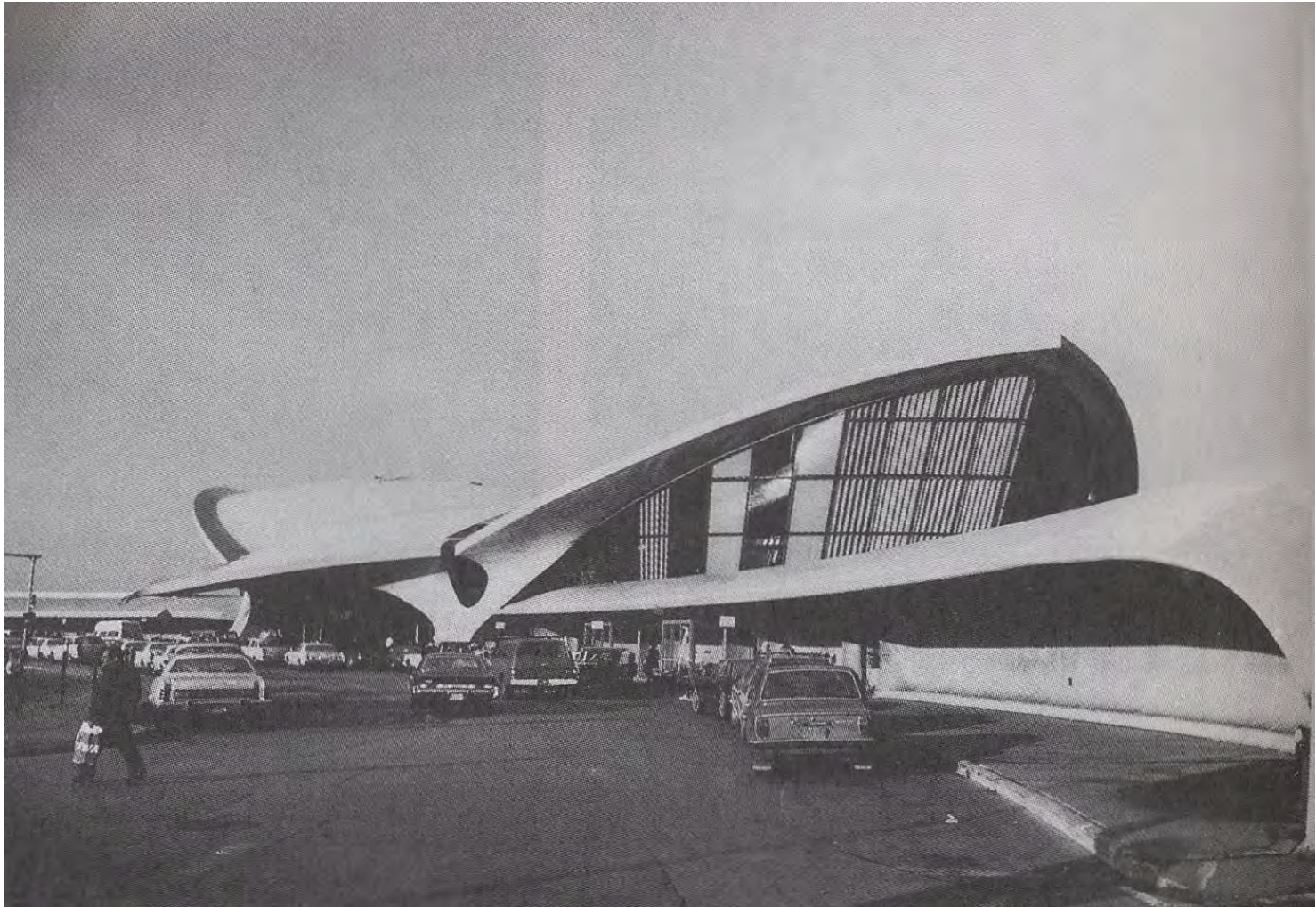
- Seagram Building, Ludwig Mies van der Rohe with Philip Johnson, 1958.











TWA Terminal, Eero Saarinen  
with Kevin Roche, 1956-62.  
now Terminal Five, Kennedy Airport



ABN-Amro Bank  
Building/ orig. Pepsi-  
Cola building, Gordon  
Bunshaft & Natalie  
DuBois of Skidmore,  
Owings and Merrill,  
1960.









- Pan Am Building (aka Met Life Building), Emery Roth & Sons, Pietro Belluschi, Walter Gropius, 1963.





- CBS Building, Eero Saarinen & Associates, 1965.





- Ford Foundation Building, Kevin Roche/John Dinkeloo Associates, 1967.











- One United Nations Plaza, Kevin Roche John Dinkeloo Associates, 1976







Citicorp Center,  
Hugh Stubbins,  
Emery Roth & Sons,  
1978





- Helmsley Palace Hotel, Emery Roth & Sons, 1980.







- IBM Building, Edward Larrabee Barnes Associates, 1983.









SONY Building/  
orig. AT&T Headquarters  
Philip Johnson John Burgee, 1984.











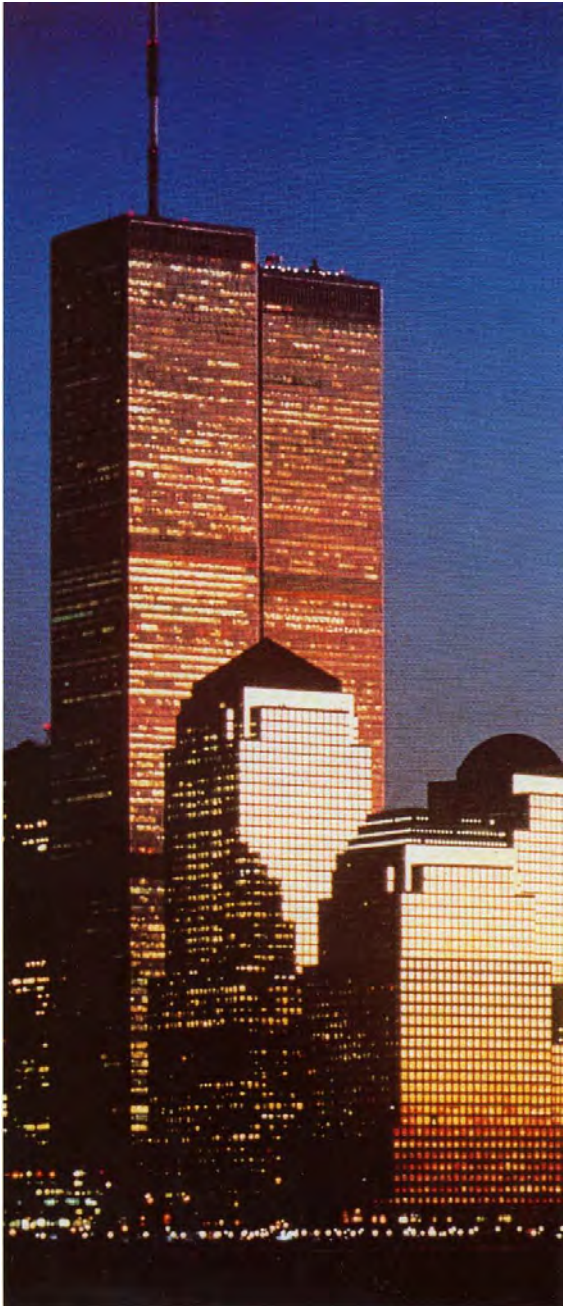


- Museum Tower, Cesar Pelli & Associates, 1985.



- World Financial Center, Cesar Pelli, 1985-1988





Jeff Perrell