

Review Sheet for Test #3

Compute the difference quotient for the functions.

1) $f(x) = 4x^2 - 7x + 15$

2) $h(x) = 2x^2 - 5x - 11$

For the given function and root, (1) solve for c , (2) then find the exact value of the remaining roots, (3) then graph the function, indicating the roots and the viewing window.

3) $f(x) = 2x^3 + 16x^2 + 33x + C$, root: -5

4) $g(x) = 3x^3 - 23x^2 + 12x + c$, root: 7

Solve the inequality and express your answer on a number line and as an interval.

5) $\frac{x+10}{x-15} \geq 0$

6) $\frac{3x-5}{25x-17} < 0$

Find the product/quotient and write the result in standard complex form.

7) $\frac{32(\cos(255) + i\sin(255))}{8(\cos(15) + i\sin(15))}$

8) $11(\cos(176^\circ) + i\sin(176^\circ)) * 9(\cos(154^\circ) + i\sin(154^\circ))$

Find the inverse for the function.

9) $f(x) = \frac{8}{x+10}$

10) $y = \frac{x+2}{x-9}$

Find the magnitude and direction angle for the given vector.

11) $v = \langle -4, -4\sqrt{3} \rangle$

12) $u = \langle 13, -13 \rangle$

Find all exact solutions in radians.

13) $\cos^2(x) - \cos(x) = 0$

14) $\tan^2(x) - \sqrt{3}\tan(x) = 0$

Let $u = \ln(x)$ and $v = \ln(y)$. Express in terms of u , and v .

15) $\ln\left(\sqrt{x^7} \sqrt[13]{y}\right)$

16) $\ln\left(\frac{\sqrt{y^9}}{x^{19}}\right)$

Find the domain, asymptotes, and x-intercepts of the function, and then sketch its graph.

17) $f(x) = -\log(x - 2)$

18) $f(x) = \ln(14 - 2x)$

19) The initial population of a village is 65 thousand and growing at a rate of 5.8% per year. Round your answers to the nearest tenth.

a) What will the population of the village be after 7 years?

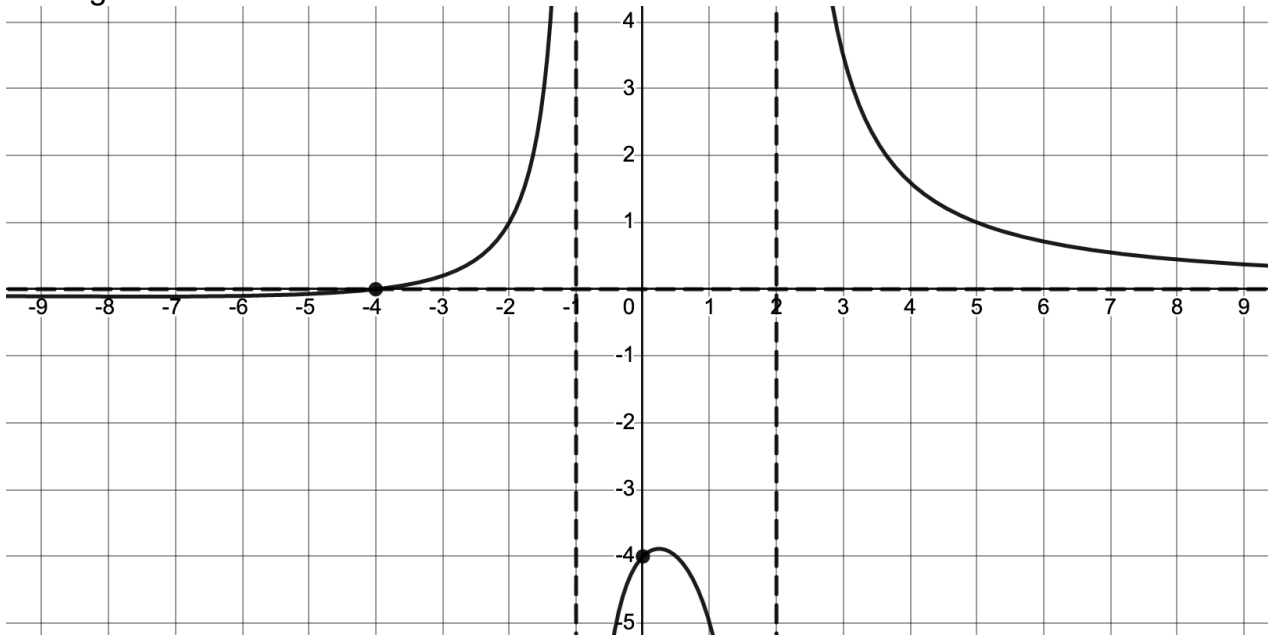
b) In how many years will the population double?

State the amplitude, period and phase shift. Then sketch one complete cycle of the graph, labeling all maximums, minimums, and x-intercepts.

20) $f(x) = -7\cos(5x - \pi)$

21) $g(x) = 2\sin\left(3x + \frac{\pi}{2}\right)$

22) Analyze the rational function $f(x)$, which has a degree of 1 on the numerator and a degree of 2 on the denominator.



Find all intercepts, asymptotes, and the domain of f . Find a formula for the function of f .

Answers

1) $8x + 4h - 7$

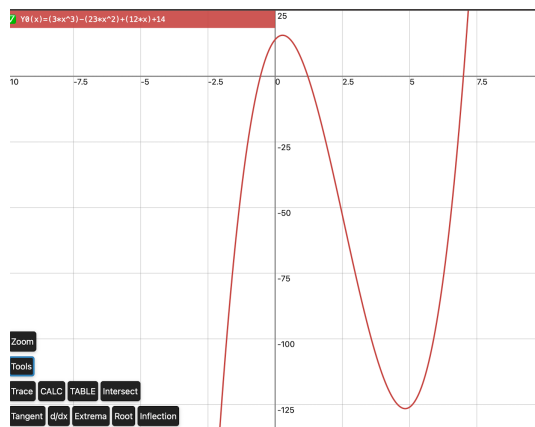
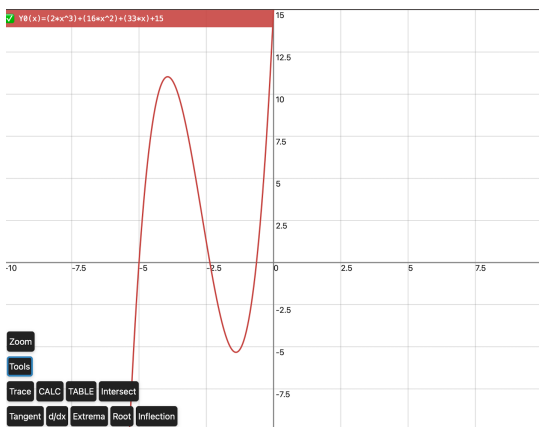
2) $4x - 5 + 2h$

3) $c = 15, x = \frac{-3 \pm \sqrt{3}}{2}$

4) $c = 14, x = \frac{1 \pm \sqrt{7}}{3}$

Window: xMax: 10, xMin: -10
yMax: 15, yMin: -10

Window: xMax: 10, xMin: -10
yMax: 25, yMin: -130



5) $(-\infty, -10] \cup (15, \infty)$

6) $\left(\frac{17}{25}, \frac{5}{3}\right)$

7) $-2 - 2i\sqrt{3}$

8) $\frac{99\sqrt{3}}{2} - \frac{99i}{2}$

$$9) f^{-1}(x) = \frac{8-10x}{x}$$

$$10) f^{-1}(x) = \frac{9x+2}{x-1}$$

$$11) \|v\| = 8, \theta = 240^\circ$$

$$12) \|u\| = \sqrt{338}, \theta = 315^\circ$$

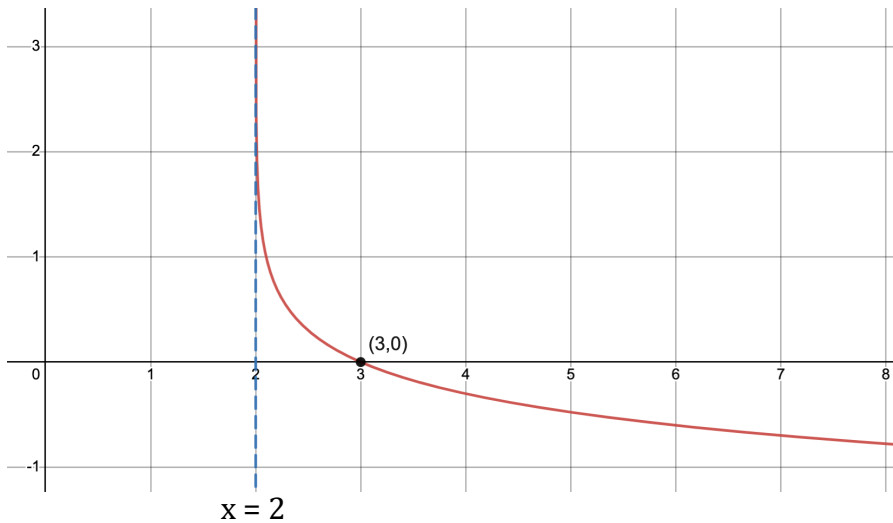
$$13) \pi + 2\pi n, \frac{3\pi}{2} + 2\pi n, 0 + 2\pi n$$

$$14) 0 + 2\pi n, \pi + 2\pi n, \frac{\pi}{3} + 2\pi n, \frac{4\pi}{3} + 2\pi n$$

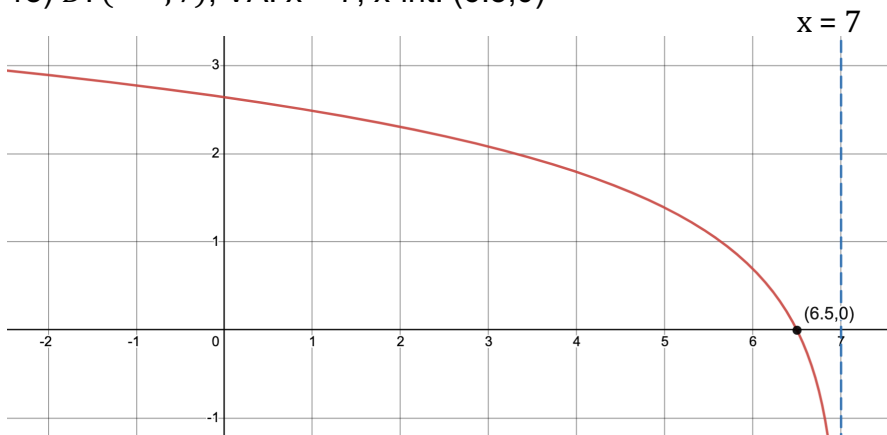
$$15) \frac{7}{2}u + \frac{1}{26}v$$

$$16) \frac{9}{2}v - 19u$$

$$17) D: (2, \infty), VA: x = 2, x\text{-int: } (3, 0)$$



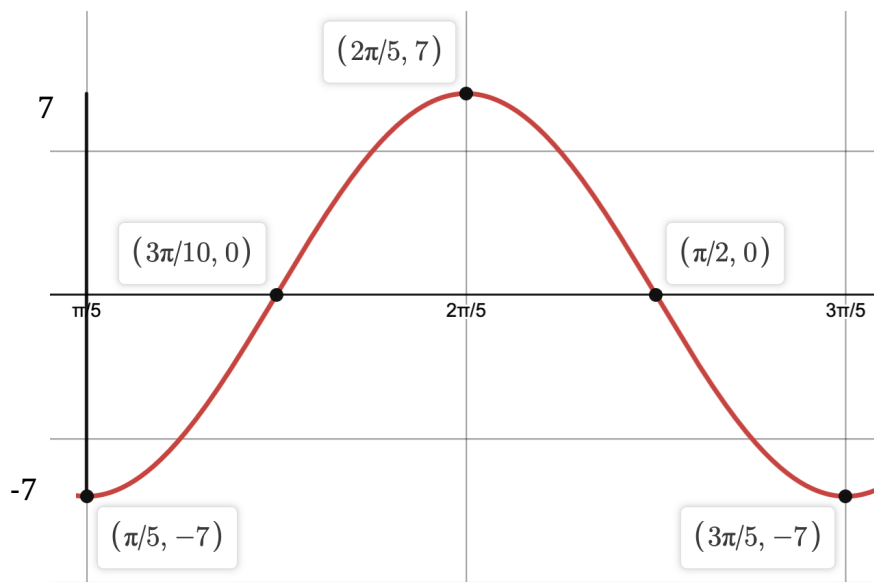
$$18) D: (-\infty, 7), VA: x = 7, x\text{-int: } (6.5, 0)$$



19) a) 96.5 thousand

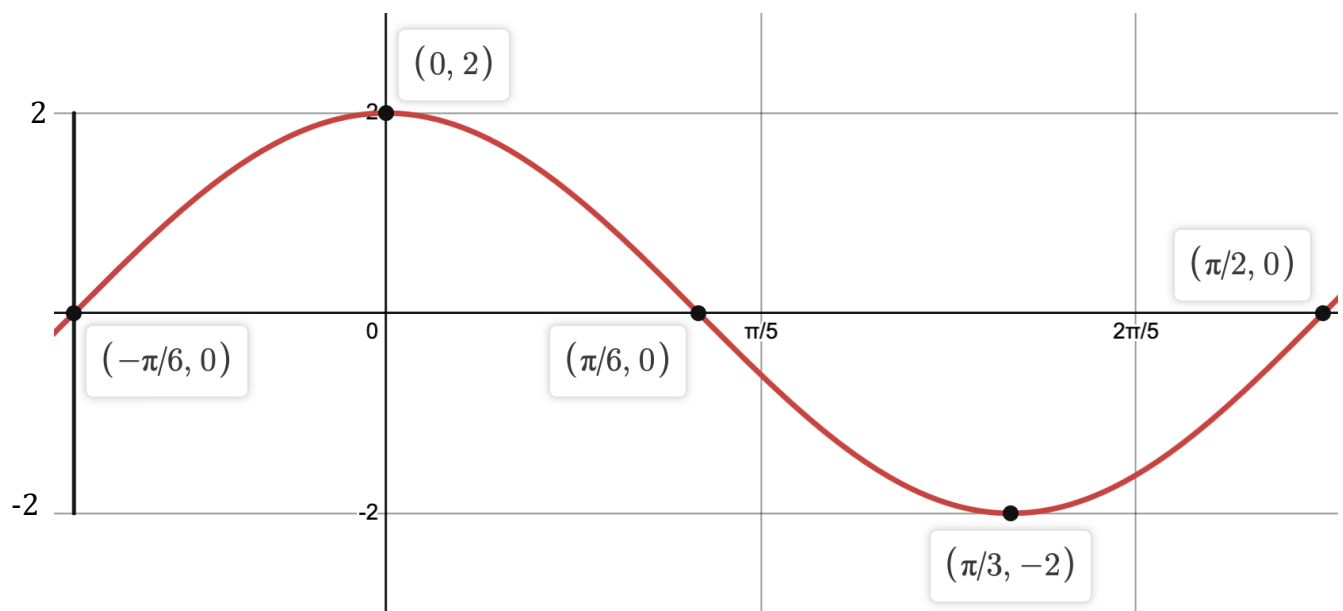
b) 12.3 years

20) Amp: 7, Pd: $\frac{2\pi}{5}$, PS: $\frac{\pi}{5}$ From the start, each $\frac{1}{4}$ period moves $+\frac{\pi}{10}$ units



Min: $(\frac{\pi}{5}, -7), (\frac{3\pi}{5}, -7)$ Max: $(\frac{2\pi}{5}, 7)$ x-int: $(\frac{3\pi}{10}, 0), (\frac{\pi}{2}, 0)$

21) Amp: 2, Pd: $\frac{2\pi}{3}$, PS: $-\frac{\pi}{6}$ From the start, each $\frac{1}{4}$ period moves $+\frac{\pi}{6}$ units



Min: $(\frac{\pi}{3}, -2)$ Max: $(0, 2)$ x-int: $(-\frac{\pi}{6}, 0), (\frac{\pi}{6}, 0), (\frac{\pi}{2}, 0)$

22) Domain: $(-\infty, -1) \cup (2, \infty)$ VA: $x = -1, x = 2$ HA: $y = 0$

x-intercept: $(-4, 0)$ y-intercept: $(0, -4)$

$$f(x) = \frac{2(x+4)}{(x-2)(x+1)}$$