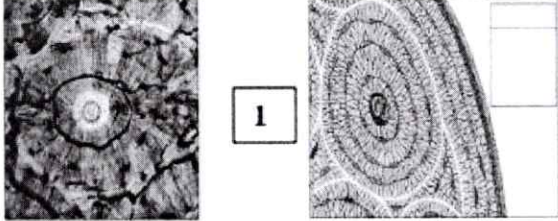
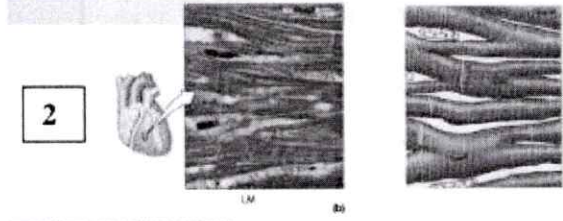
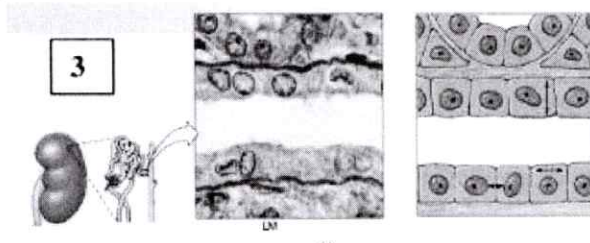
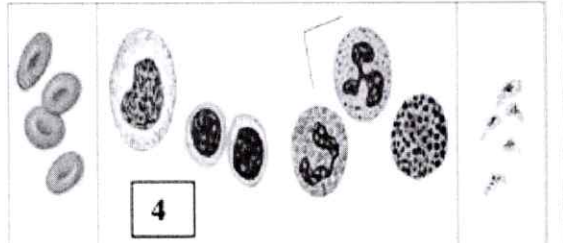
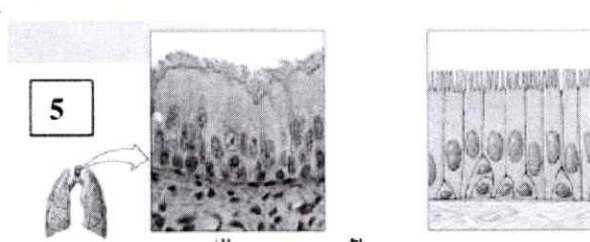
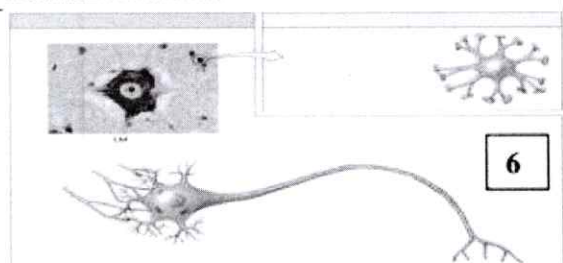
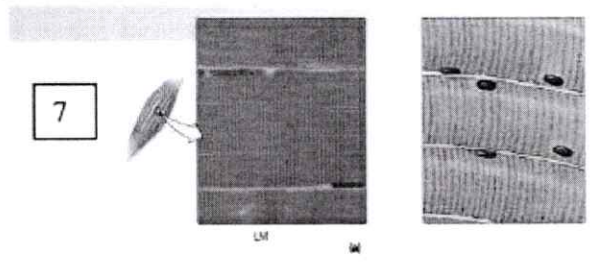
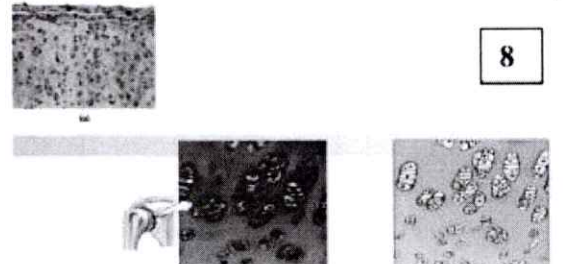
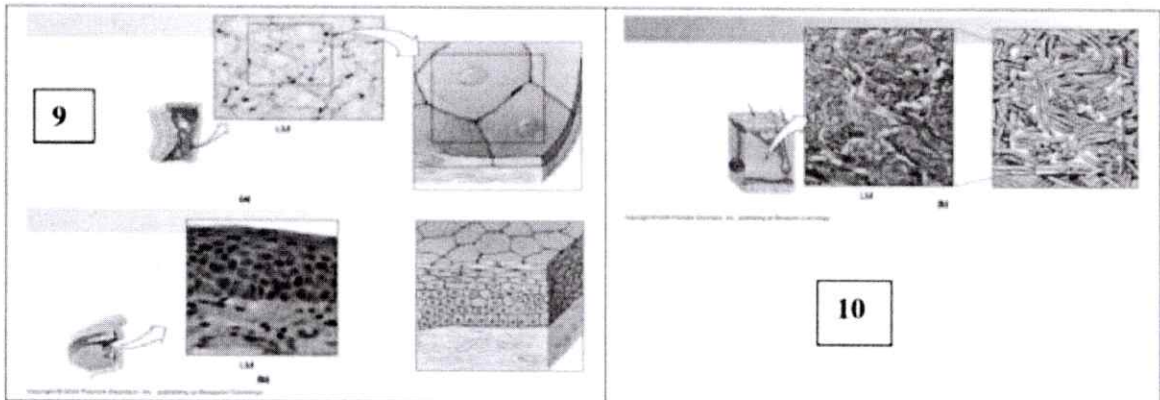


Explain and identify the following tissue types:

 <p>1</p> <p>Copyright © 2004 Pearson Education, Inc., publishing as Benjamin Cummings</p>	 <p>2</p> <p>Copyright © 2004 Pearson Education, Inc., publishing as Benjamin Cummings</p>
 <p>3</p> <p>Copyright © 2004 Pearson Education, Inc., publishing as Benjamin Cummings</p>	 <p>4</p> <p>Copyright © 2004 Pearson Education, Inc., publishing as Benjamin Cummings</p>
 <p>5</p> <p>Copyright © 2004 Pearson Education, Inc., publishing as Benjamin Cummings</p>	 <p>6</p>
 <p>7</p> <p>Copyright © 2004 Pearson Education, Inc., publishing as Benjamin Cummings</p>	 <p>8</p> <p>Copyright © 2004 Pearson Education, Inc., publishing as Benjamin Cummings</p>



No	Tissue Type
2.	Cardiac Muscle Tissue
3.	Simple Cuboidal Epithelium
4.	Areolar Tissue
5.	Pseudostratified Columnar Epithelium
6.	Neural Tissue
7.	skeletal Muscle tissue
8.	Supporting Connective Tissue
9.	Simple & Stratified Squamous Epithelium.
10.	Dense Irregular Connective tissue.
1.	Osseous Tissue.