

# REVIEW SHEET

## Organ Systems Overview

Name Rafcel G. HernandezLabTime/Date OL26

1. Use the key below to indicate the body systems that perform the following functions for the body; note that some responses are used more than once. Then, circle the organ systems (in the key) that are present in all subdivisions of the ventral body cavity.

Key: a. cardiovascular  
b. digestive  
c. endocrine

d. integumentary  
e. lymphatic/immunity  
f. muscular

g. nervous  
h. reproductive  
i. respiratory

j. skeletal  
k. urinary

- k. Urinary \_\_\_\_\_ 1. rids the body of nitrogen-containing wastes
- c. Endocrine \_\_\_\_\_ 2. is affected by removal of the thyroid gland
- j. Skeletal \_\_\_\_\_ 3. provides support and the levers on which the muscular system acts
- a. Cardiovascular \_\_\_\_\_ 4. includes the heart
- h. Reproductive \_\_\_\_\_ 5. has a menstrual cycle in females
- d. Integumentary \_\_\_\_\_ 6. protects underlying organs from drying out and from mechanical damage
- e. Lymphatic/Immunity \_\_\_\_\_ 7. protects the body; destroys bacteria and tumor cells
- b. Digestive \_\_\_\_\_ 8. breaks down ingested food into its building blocks
- i. Respiratory \_\_\_\_\_ 9. removes carbon dioxide from the blood
- a. Cardiovascular \_\_\_\_\_ 10. delivers oxygen and nutrients to the tissues
- f. Muscular \_\_\_\_\_ 11. moves the limbs; facilitates facial expression
- k. Urinary \_\_\_\_\_ 12. conserves body water or eliminates excesses
- h. Reproductive \_\_\_\_\_ and c. Endocrine \_\_\_\_\_ 13. facilitate conception and childbearing
- c. Endocrine \_\_\_\_\_ 14. controls the body by means of chemical molecules called hormones
- d. Integumentary \_\_\_\_\_ 15. is damaged when you cut your finger or get a severe sunburn

2. Using the above key, choose the *organ system* to which each of the following sets of organs or body structures belongs.

- e. Lymphatic 1. thymus, spleen, lymphatic vessels d. Integumentary 5. epidermis, dermis, and cutaneous sense organs
- j. Skeletal 2. bones, cartilages, tendons h. Reproductive 6. testis, ductus deferens, urethra
- c. Endocrine 3. pancreas, pituitary, adrenals b. Digestive 7. esophagus, large intestine, rectum
- i. Respiratory 4. trachea, bronchi, lungs f. Muscular 8. muscles of the thigh, postural muscles

3. Using the key, place the following organs in their proper body cavity. Some responses may be used more than once.

Key: a. abdominopelvic

b. cranial

c. spinal

d. thoracic

A 1. stomach

A 4. liver

D 7. heart

D 2. esophagus

B/C 5. spinal cord

D 8. trachea

A 3. large intestine

A 6. urinary bladder

A 9. rectum

4. Using the organs listed in question 3 above, record, by number, which would be found in the abdominopelvic regions listed below.

6 1. hypogastric region

1, 4 4. epigastric region

3 2. right lumbar region

3 5. left iliac region

3 3. umbilical region

1 6. left hypochondriac region

5. The levels of organization of a living body include Chemical, Cellular, Tissue, Organ/Organ System, and organism.

6. Define *organ*. A group of specialized tissue that have come together to form a specific function

7. Using the terms provided, correctly identify all of the body organs provided with leader lines in the drawings shown below. Then name the organ systems by entering the name of each on the answer blank below each drawing.

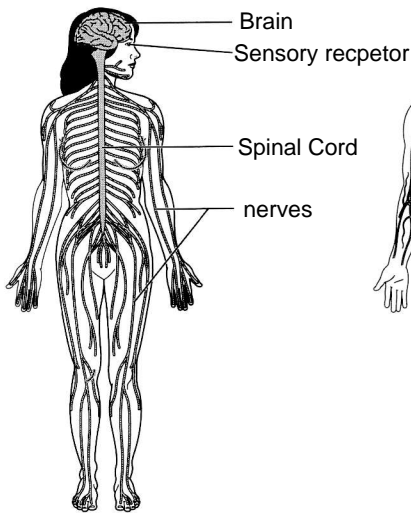
Key: blood vessels  
brain

heart  
kidney

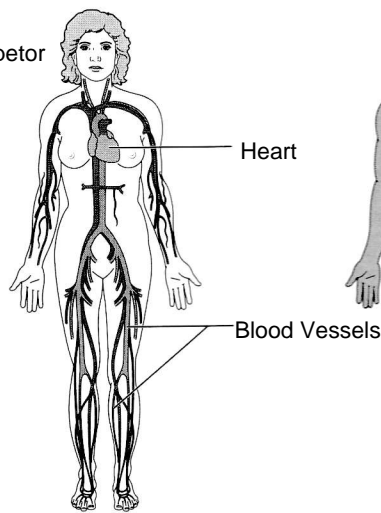
nerves  
sensory receptor

spinal cord  
ureter

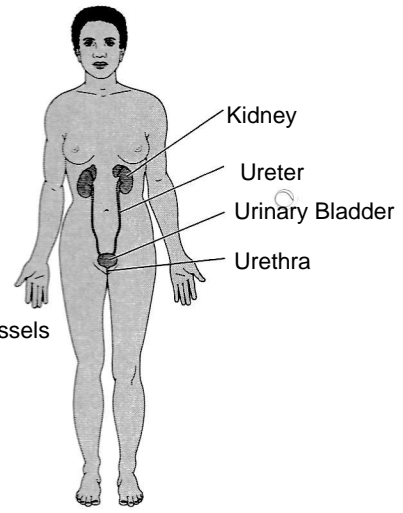
urethra  
urinary bladder



a. Nervous



b. Cardiovascular



c. Urinary

8. Why is it helpful to study the external and internal structures of the rat? \_\_\_\_\_  
The external and internal structures are similar to that of a human, so it can help give us an understanding of our own structures.