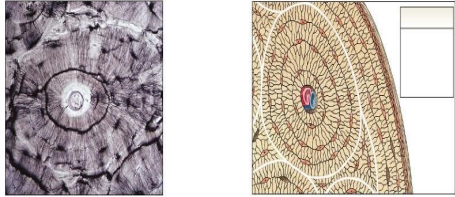


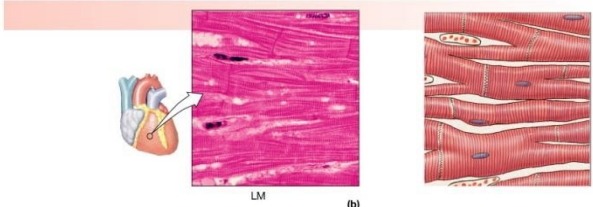
Explain and identify the following tissue types:

1



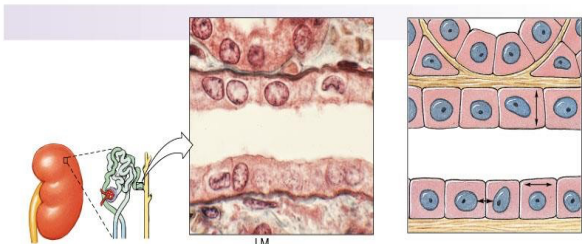
Copyright © 2004 Pearson Education, Inc., publishing as Benjamin Cummings.

2



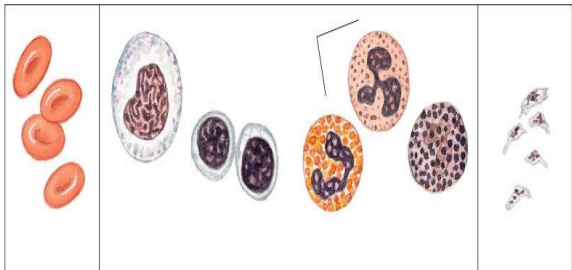
Copyright © 2004 Pearson Education, Inc., publishing as Benjamin Cummings.

3



Copyright © 2004 Pearson Education, Inc., publishing as Benjamin Cummings.

4



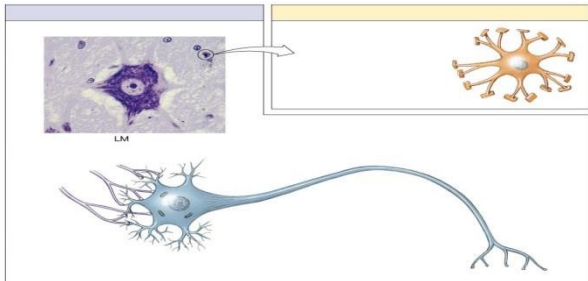
Copyright © 2004 Pearson Education, Inc., publishing as Benjamin Cummings.

5



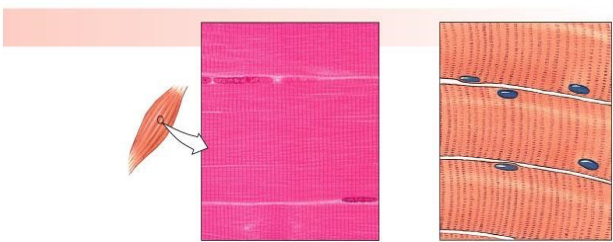
Copyright © 2004 Pearson Education, Inc., publishing as Benjamin Cummings.

6



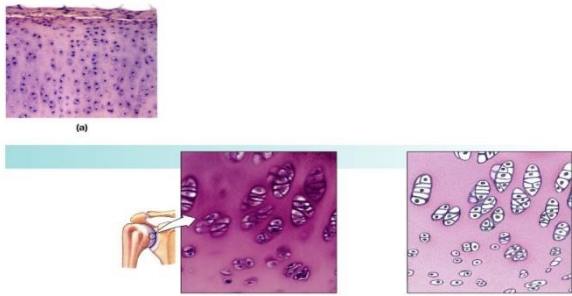
Copyright © 2004 Pearson Education, Inc., publishing as Benjamin Cummings.

7



Copyright © 2004 Pearson Education, Inc., publishing as Benjamin Cummings.

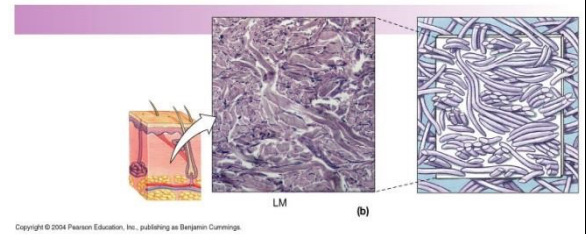
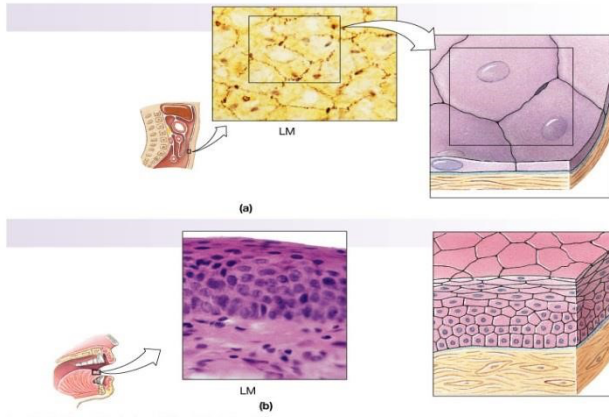
8



Copyright © 2004 Pearson Education, Inc., publishing as Benjamin Cummings.

9

10



Copyright © 2004 Pearson Education, Inc., publishing as Benjamin Cummings.

No	Tissue Type
1	Bone Tissue : Osteocytes are seen which are found in the bones.
2	Cardiac Muscle: striated and branched
3	Simple Cuboidal Epithelium : Cubed shaped cells that are in a single layer
4	Fluid Connective Tissues : found in the blood and contains formed elements
5	Pseudostratified Columnar Epithelium : Cilia can be seen on top of the cells and the cells are columnar and simple
6	Nervous tissue: neurons, Visible neurons and dendrites on the cell.
7	Skeletal Muscle : Straited and long
8	Hyaline Cartilage : tough, springy and closely packed collagen fibers
9	Simple Squamous Epithelium : squamous and single layer Stratified Squamous Epithelium: squamous and multiple layers
10	Dense Irregular Connective Tissue : collagen fibers meshed together

