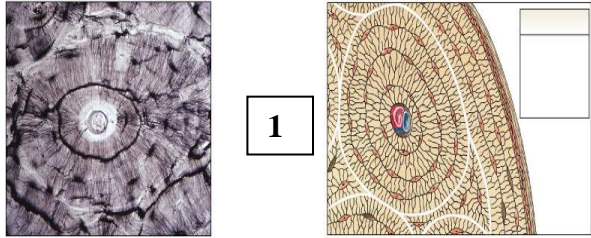
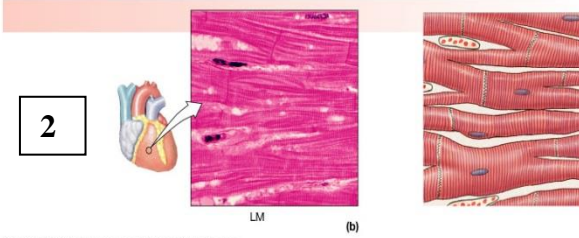
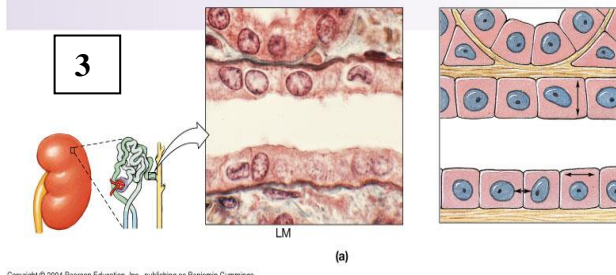

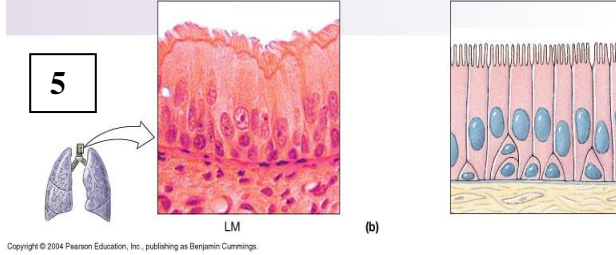
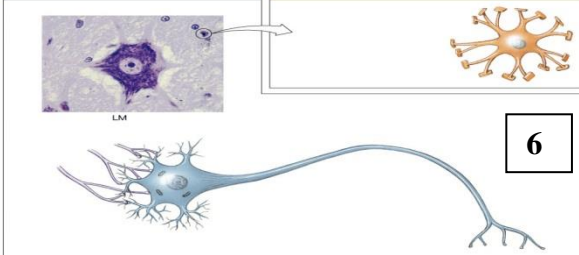
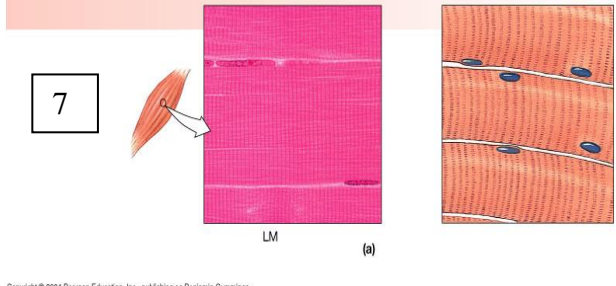
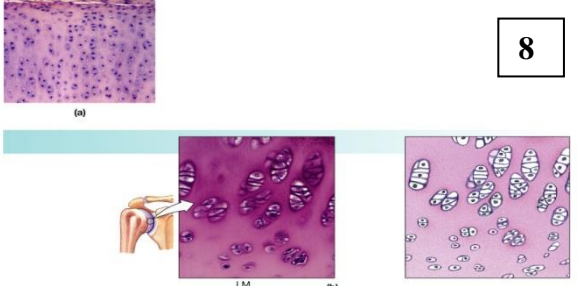
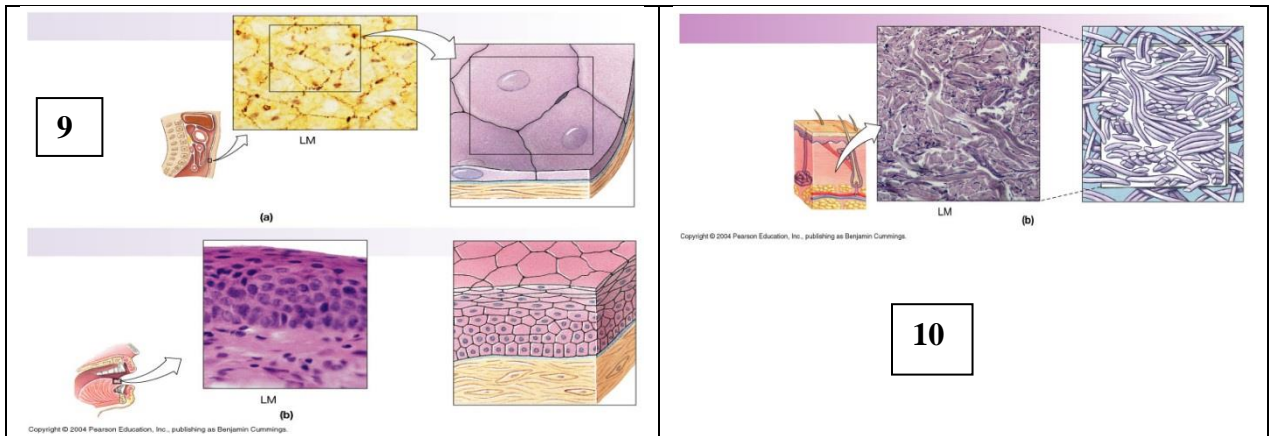


BIO 2311 Lab

Tissue Types

Explain and identify the following tissue types:

<p>1</p>  <p>Copyright © 2004 Pearson Education, Inc., publishing as Benjamin Cummings.</p>	<p>2</p>  <p>Copyright © 2004 Pearson Education, Inc., publishing as Benjamin Cummings.</p>
<p>3</p>  <p>Copyright © 2004 Pearson Education, Inc., publishing as Benjamin Cummings.</p>	<p>4</p>  <p>Copyright © 2004 Pearson Education, Inc., publishing as Benjamin Cummings.</p>
<p>5</p>  <p>Copyright © 2004 Pearson Education, Inc., publishing as Benjamin Cummings.</p>	<p>6</p>  <p>Copyright © 2004 Pearson Education, Inc., publishing as Benjamin Cummings.</p>
<p>7</p>  <p>Copyright © 2004 Pearson Education, Inc., publishing as Benjamin Cummings.</p>	<p>8</p>  <p>Copyright © 2004 Pearson Education, Inc., publishing as Benjamin Cummings.</p>



No	Tissue Type
1	Bone/ Osseous Tissue osteocytes are visible and they are highly vascularized
2	Cardiac Muscle striations and long, branched characteristics
3	Simple Cuboidal Epithelium cube like structure of cells
4	Fluid Connective Tissue formed elements contain Erythrocytes, Monocytes, Lymphocytes, Eosinophils, Neutrophil, Basophils and Platelets
5	Pseudostratified Columnar Epithelium cilia and column like structure
6	Nervous Tissue: Neuron Cell large soma, visible nucleoli and many dendrites
7	Skeletal Muscle/ Striated Voluntary Muscle appear striated and presence of nucleus
8	Hyaline Cartilage contains fine, closely packed collagen fibers
9	a) Simple Squamous Epithelium thin layer of flattened cells b) Stratified Squamous Epithelium basal cells look cuboidal
10	Dense Irregular Connective Tissue collagen fiber bundles

