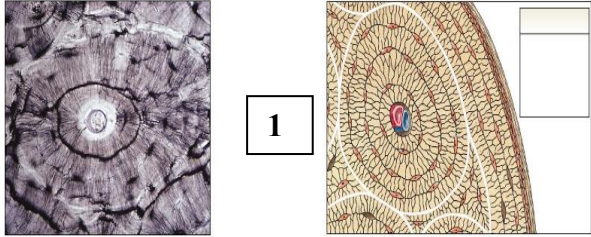
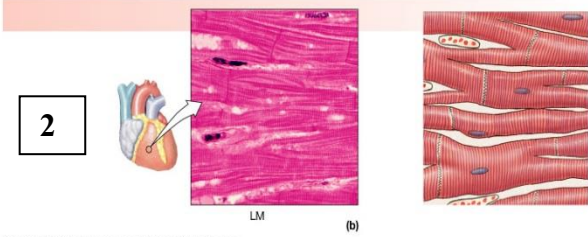
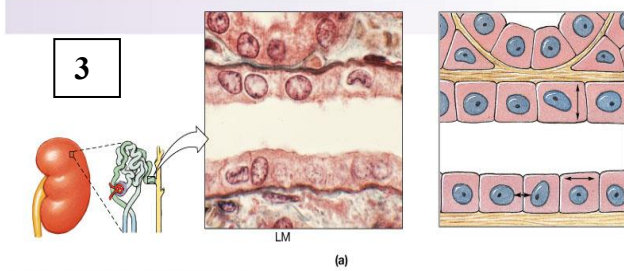
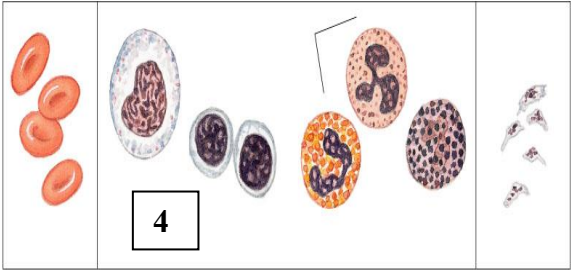
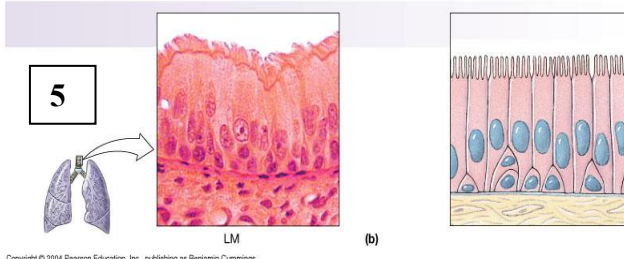
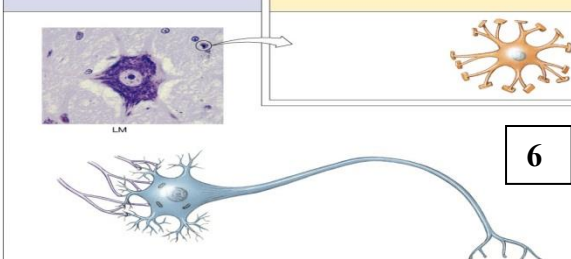
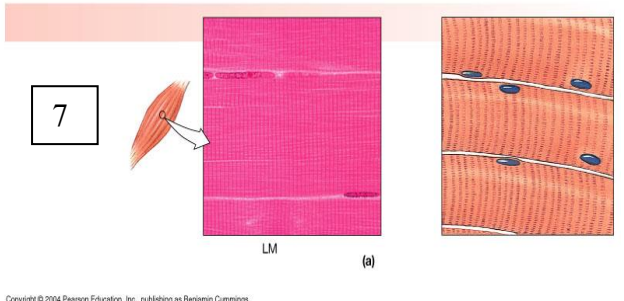
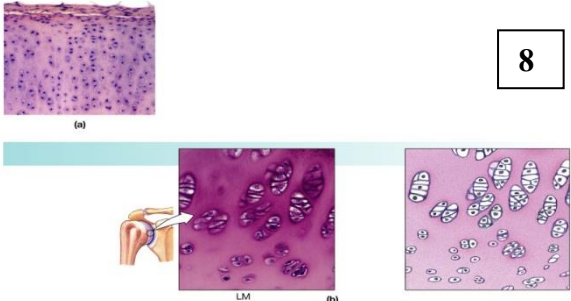
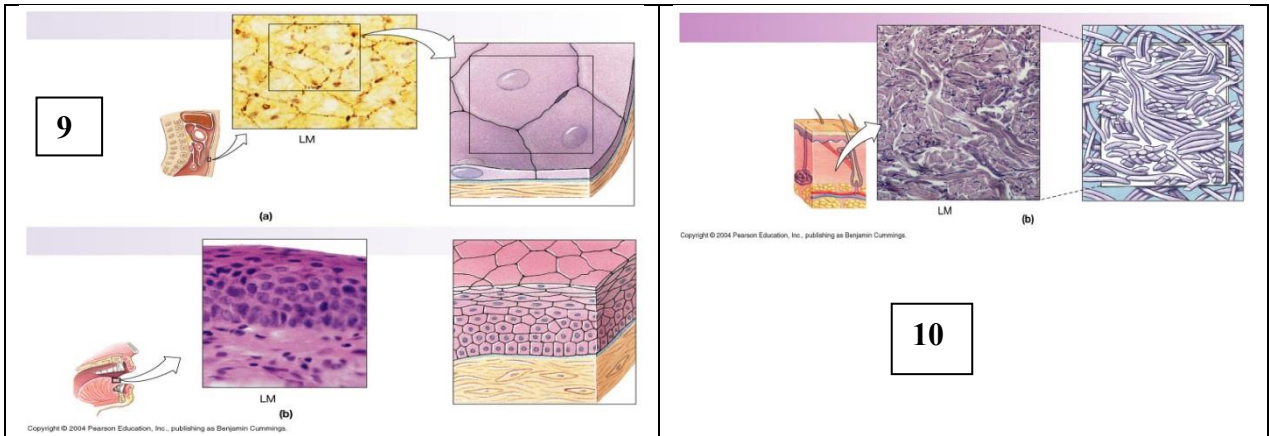


Explain and identify the following tissue types:

 <p>1</p> <p>Copyright © 2004 Pearson Education, Inc., publishing as Benjamin Cummings.</p>	 <p>2</p> <p>Copyright © 2004 Pearson Education, Inc., publishing as Benjamin Cummings.</p>
 <p>3</p> <p>Copyright © 2004 Pearson Education, Inc., publishing as Benjamin Cummings.</p>	 <p>4</p> <p>Copyright © 2004 Pearson Education, Inc., publishing as Benjamin Cummings.</p>
 <p>5</p> <p>Copyright © 2004 Pearson Education, Inc., publishing as Benjamin Cummings.</p>	 <p>6</p> <p>Copyright © 2004 Pearson Education, Inc., publishing as Benjamin Cummings.</p>
 <p>7</p> <p>Copyright © 2004 Pearson Education, Inc., publishing as Benjamin Cummings.</p>	 <p>8</p> <p>Copyright © 2004 Pearson Education, Inc., publishing as Benjamin Cummings.</p>



No	Tissue Type
1	Bone Tissue- There are visible osteocytes, cells found in the bone, and it is highly vascularized with little ground substance.
2	Cardiac Muscle Tissue- The visible zone is coming from the heart as seen from the diagram, and displays long and branched cells with striations.
3	Simple Cuboidal Epithelium Tissue- There is a single layer of cube like cells.
4	Fluid Connective Tissue- These come from blood cells and circulate in a liquid extra cellular matrix.
5	Pseudostratified Columnar Epithelium- Reaches the basil lamina, has cilia, and appears to be stratified but consists of a single layer of irregularly shaped and different sized columnar cells.
6	Nervous Tissue- Includes the neuron cell, there is visible nucleoli, one axon, large soma and dendrites.
7	Skeletal Muscle- Linear striations and there is a visible nucleus
8	Hyaline Cartilage- Translucent and blue/white, present in joints, respiratory tract and immature skeleton and contains fine, loosely packed fibers.
9	A. Simple Squamous Epithelium- A single layer of flat-like cells in contact with basal lamina B. Striated Squamous Epithelium- Flattened cells arranged in layers on basal laminate
10	Dense Irregular Connective Tissue- Fibers not arranged in parallel bundles, mesh of collagen fibers.

