

# 1

EXERCISE

## REVIEW SHEET

# The Language of Anatomy

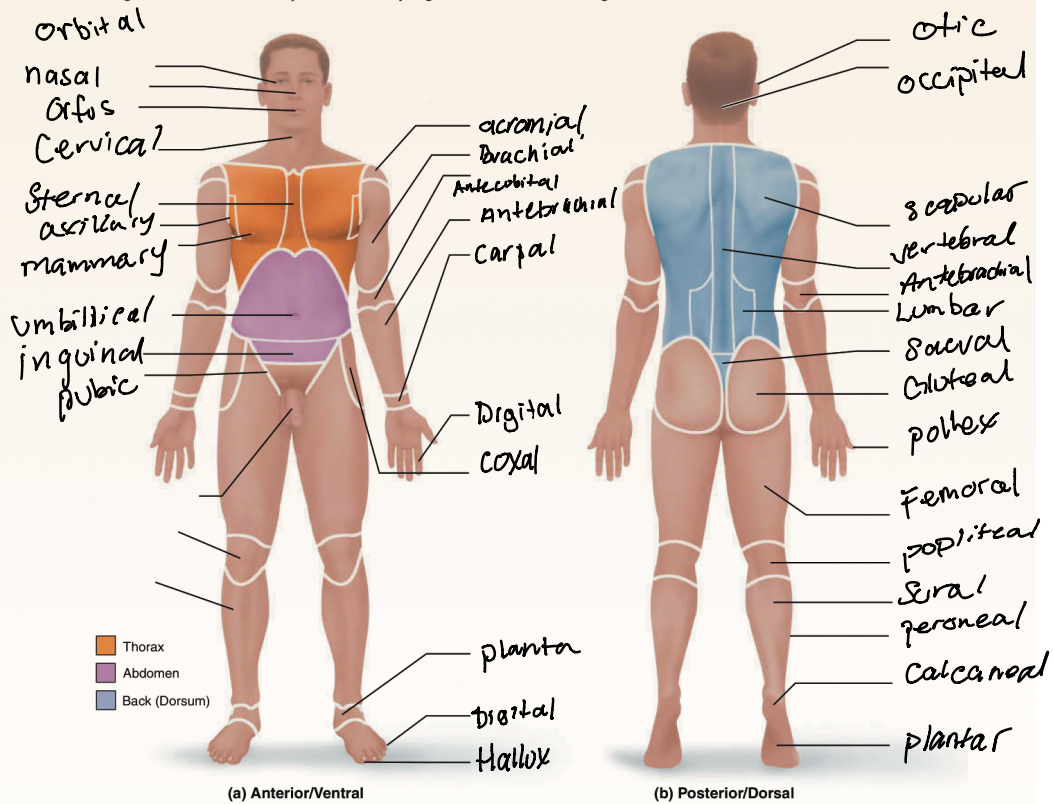


Instructors may assign a portion of the Review Sheet questions using **Mastering A&P™**

Name Elizabeth Swalez Lab Time/Date \_\_\_\_\_

### Regional Terms

- Describe completely the standard human anatomical position. human body is erect with feet only slightly apart, head and toes are pointed forward, and arms hanging at the sides with palm facing forward.
- Use the regional terms to correctly label the body regions indicated on the figures below.



### Directional Terms, Planes, and Sections

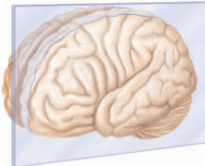
3. Define *plane*. Section made through the body wall of organ, on an imaginary surface
4. Several incomplete statements appear below. Correctly complete each statement by choosing the appropriate anatomical term from the choices. Use each term only once.

anterior	inferior	posterior	superior
distal	lateral	proximal	transverse
frontal	medial	sagittal	

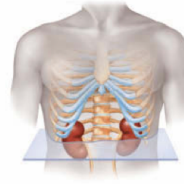
- The thoracic cavity is superior to the abdominopelvic cavity.
  - The trachea (windpipe) is anterior to the vertebral column.
  - The wrist is proximal to the hand.
  - If an incision cuts the heart into left and right parts, a sagittal plane of section was used.
  - The nose is medial to the cheekbones.
  - The thumb is lateral to the ring finger.
  - The vertebral cavity is inferior to the cranial cavity.
  - The knee is inferior to the thigh.
  - The plane that separates the head from the neck is the transverse plane.
  - The popliteal region is posterior to the patellar region.
  - The plane that separates the anterior body surface from the posterior body surface is the frontal plane.
5. Correctly identify each of the body planes by writing the appropriate term on the answer line below the drawing.



(a) Frontal plane



(b) sagittal plane



(c) transverse plane

### Body Cavities

6. Name the muscle that subdivides the ventral body cavity. diaphragm
7. Which body cavity provides the least protection to its internal structures? abdominal cavity
8. For the body cavities listed, name one organ located in each cavity.
- cranial cavity brain
  - vertebral cavity spinal cord

3. thoracic cavity Heart, Lungs
4. abdominal cavity Stomach
5. pelvic cavity reproductive organs
6. mediastinum heart
9. Name the abdominopelvic region where each of the listed organs is located.
1. spleen Left hypochondriac region
2. urinary bladder pubic (hypogastric) region
3. stomach (largest portion) epigastric region
4. cecum Right inguinal (iliac) region
10. Explain how serous membranes protect organs from infection. Compartmentalizes the various organs to prevent infection from spreading to other organs
11. Which serous membrane(s) is/are found in the thoracic cavity? pleura, pericardium
12. Which serous membrane(s) is/are found in the abdominopelvic cavity? peritoneum,
13. Using the key choices, identify the small body cavities described below.
- Key: a. middle ear cavity      e. oral cavity      e. synovial cavity  
b. nasal cavity      d. orbital cavity
- D 1. holds the eyes in an anterior-facing position      e (oral cavity) 4. contains the tongue
- A 2. houses three tiny bones involved in hearing      e 5. surrounds a joint
- B 3. contained within the nose      synovial
14. **+** Name the body region that blood is usually drawn from. Antecubital
15. **+** A patient has been diagnosed with appendicitis. Use anatomical terminology to describe the location of the person's pain. Assume that the pain is referred to the surface of the body above the organ. right inguinal region
16. **+** Which body cavity would be opened to perform a hysterectomy? pelvic cavity
17. **+** Which smaller body cavity would be opened to perform a total knee joint replacement? synovial cavity
18. **+** An abdominal hernia results when weakened muscles allow the protrusion of abdominal structures. In the case of an umbilical hernia, parts of a serous membrane and the small intestine form the bulge. Which serous membrane is involved? peritoneum

