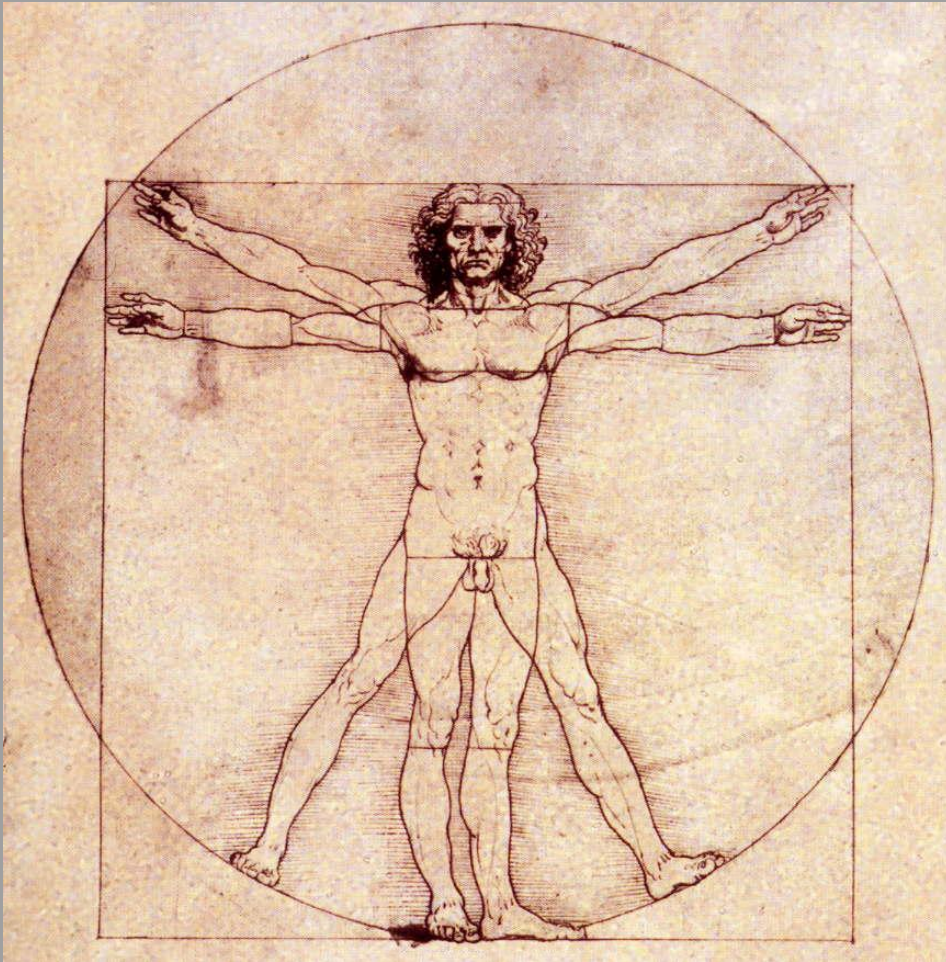


# SPHERE OF RINGS- SELF-STRUCTURAL SPHERE

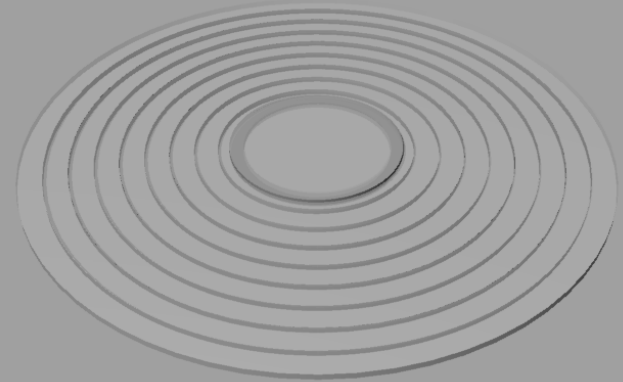


APRIL TURNER  
ARCH 3690 – INTERMEDIATE COMPUTATION & FABRICATION  
PROFESSORS ABLE & VIDICH  
SPRING 2013

# CONCEPT #1



- LEONARDO DA VINCI'S "VITRUVIAN MAN", ALSO KNOWN AS THE HUMAN PROPORTIONS SKETCH
- IN HIS TREATISE, VITRUVIUS DISCUSSED PROPER SYMMETRY AND PROPORTION AS RELATED TO THE BUILDING OF TEMPLES
- HE NOTED THAT A HUMAN BODY CAN BE SYMMETRICALLY INSCRIBED WITHIN BOTH A CIRCLE AND A SQUARE



SOURCE: <http://www.davincilife.com/vitruvianman.html>

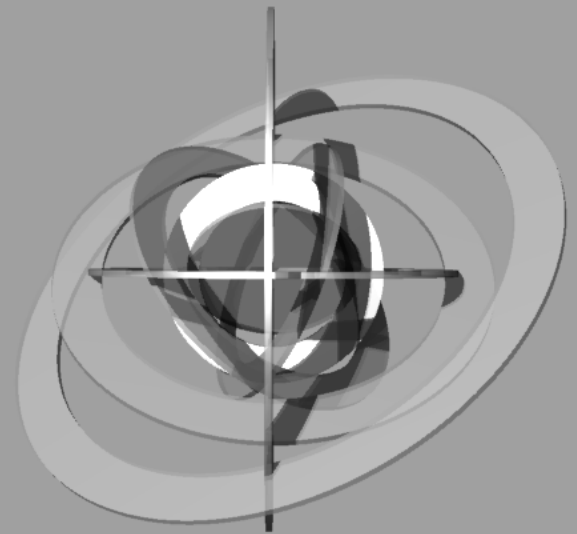
2-D CONCEPT

# CONCEPT #2



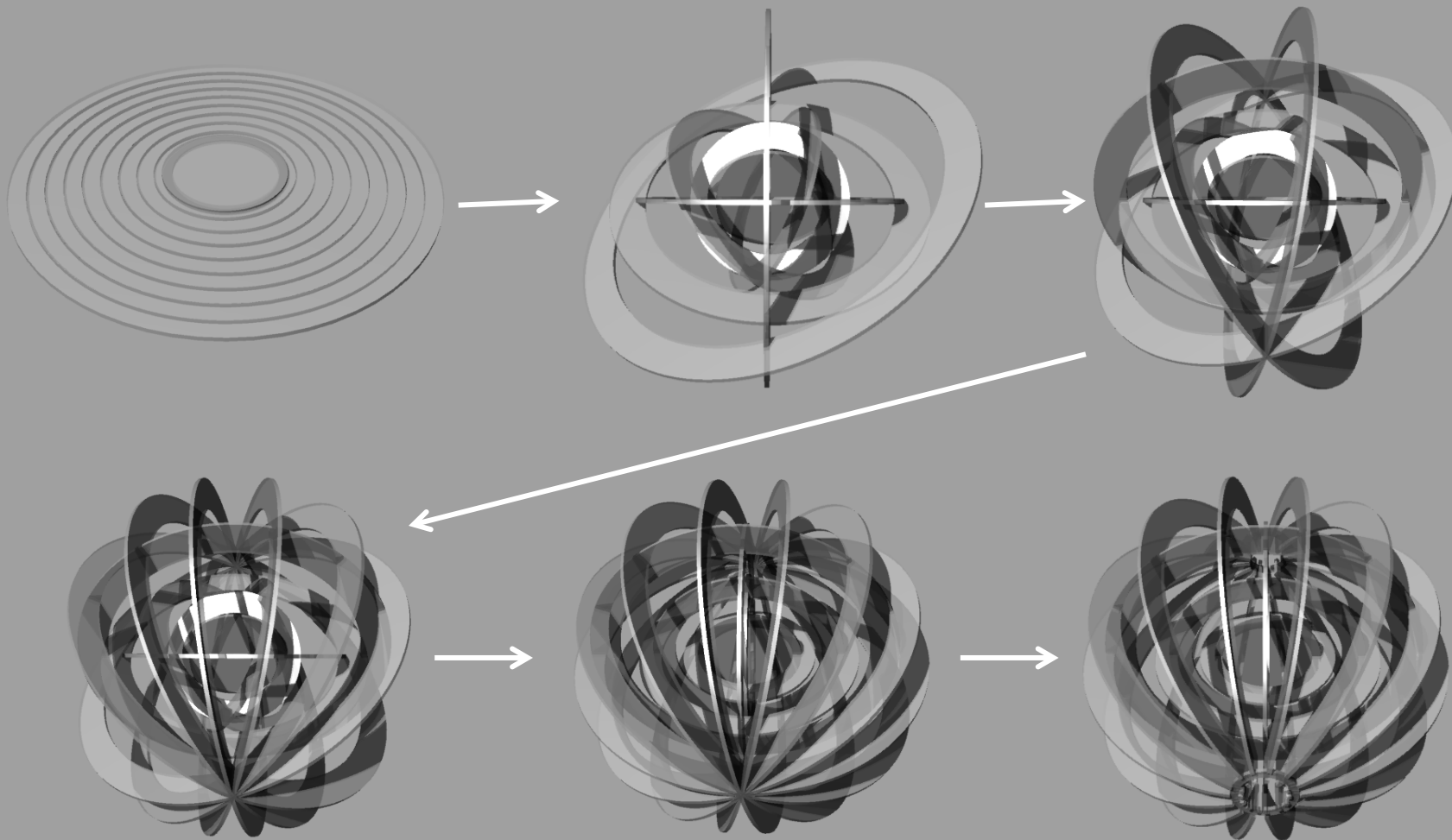
SOURCE: <http://www.talkphotography.co.uk/forums/showthread.php?t=182408>

- THE SPINNING COIN IDEA AROSE WHEN I READ FROM THE TEXT ON THE VITRUVIAN MAN THAT "THERE IS A CHANGING PERSPECTIVE IN THE WORK. IT IS STATIC IN STRUCTURE BUT DYNAMIC IN ITS PRESENTATION OF A MOVING, LIVING MAN."
- I ALSO FIGURED IT WOULD MAKE MY SPHERE MORE STRUCTURAL.



3-D CONCEPT

# PROCESS



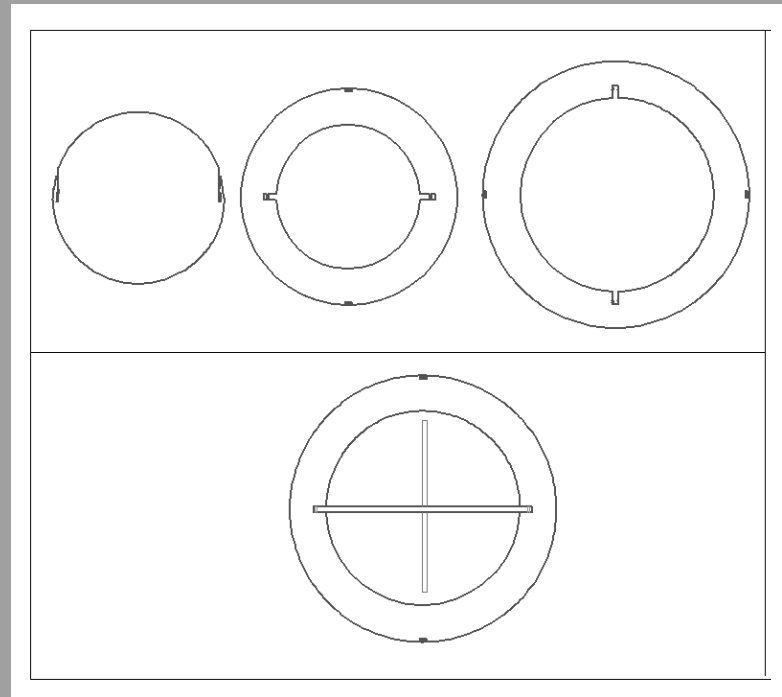
# MAKING IT WORK - INTERIOR



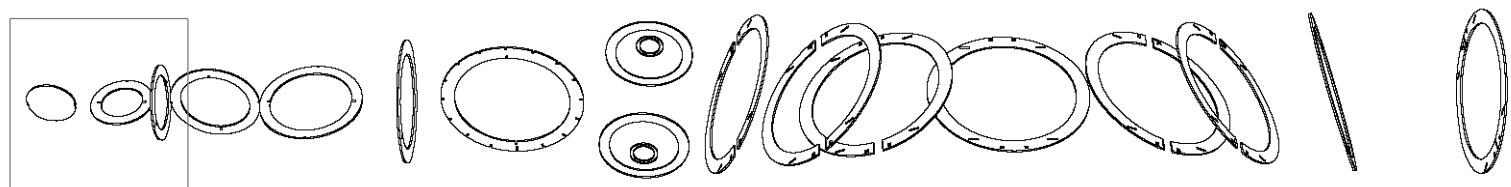
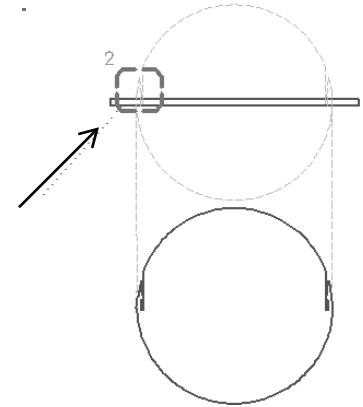
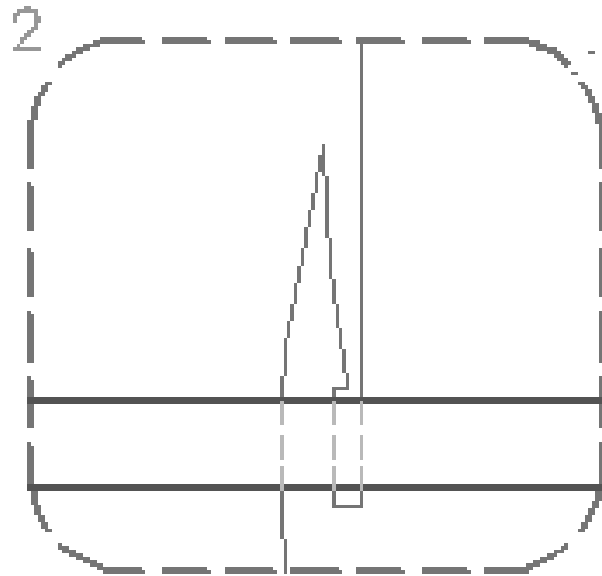
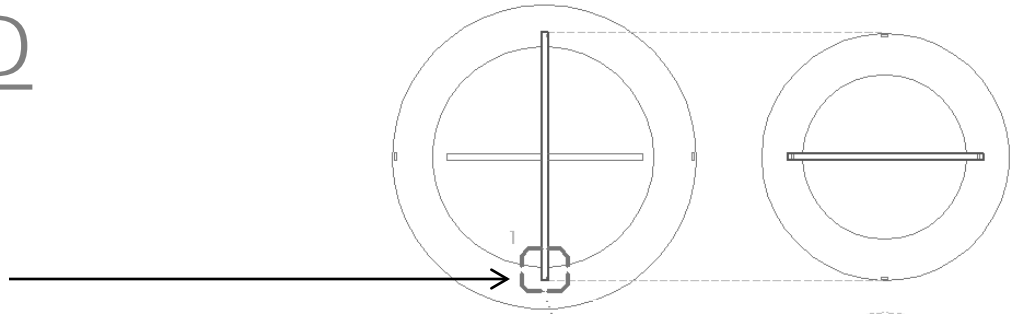
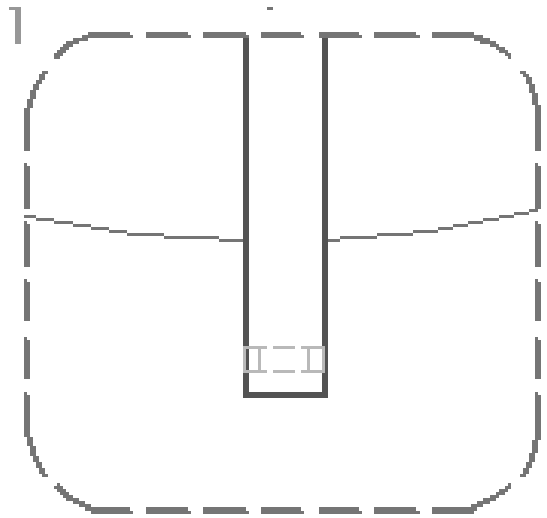
SOLUTION #1 –  
SLIDE AND  
SNAP METHOD



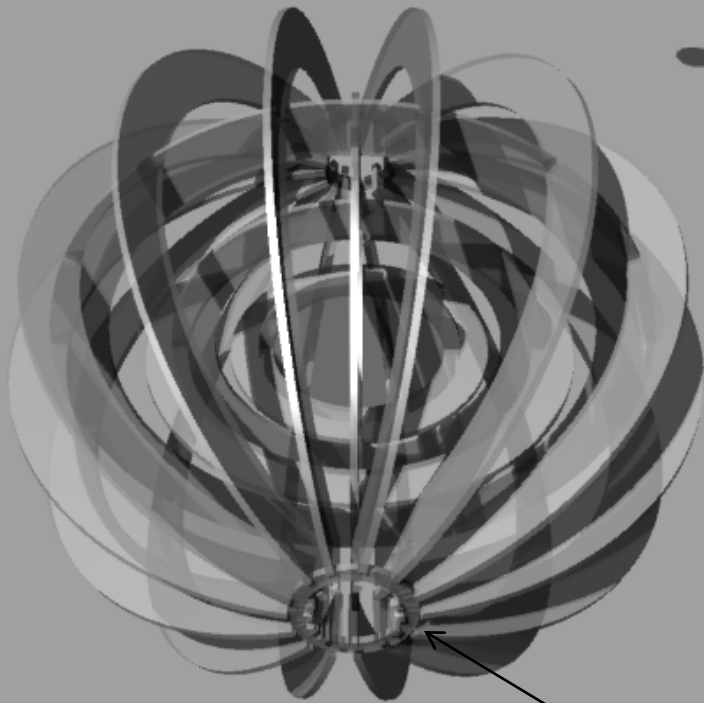
TAKEN APART



# THE "SLIDE AND SNAP" METHOD



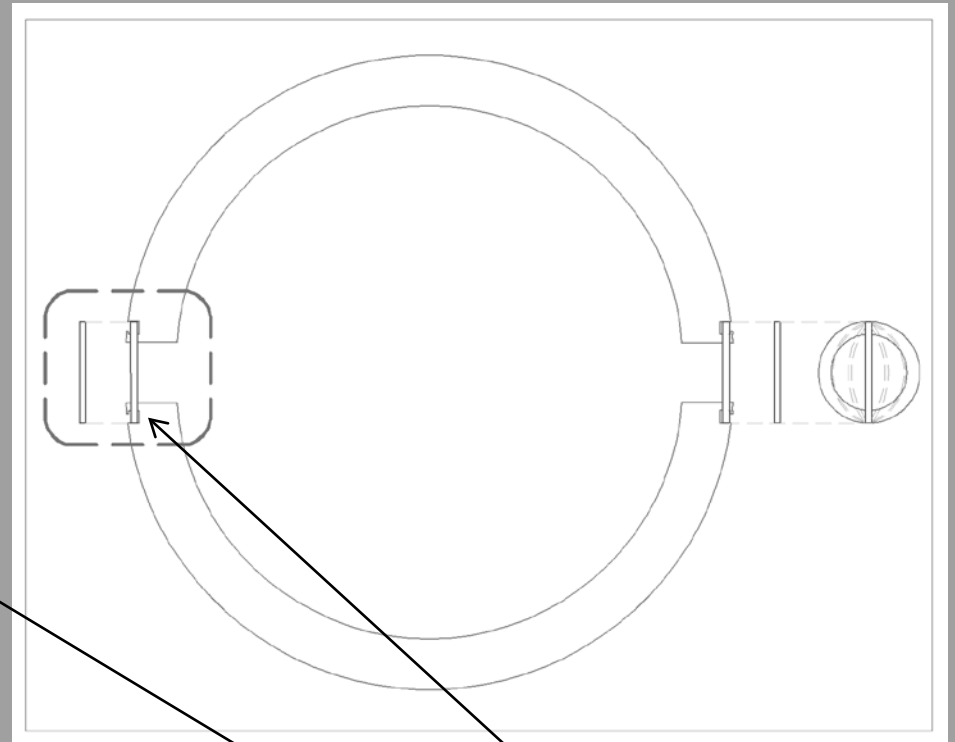
# MAKING IT WORK - EXTERIOR



SOLUTION #1 -  
HOOK METHOD

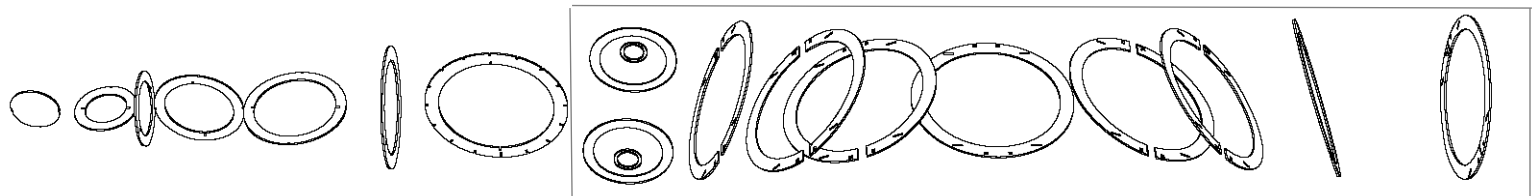
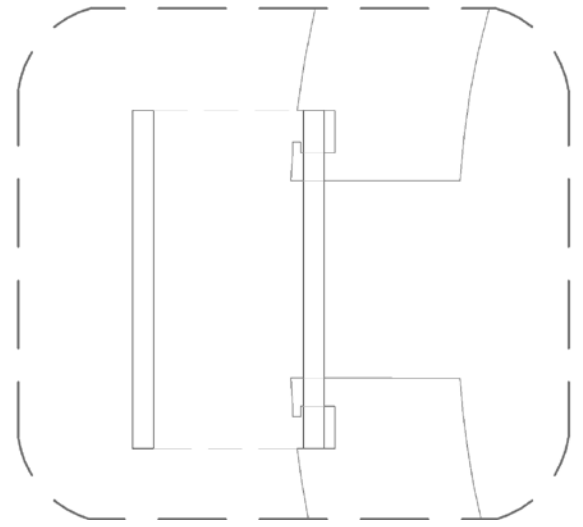
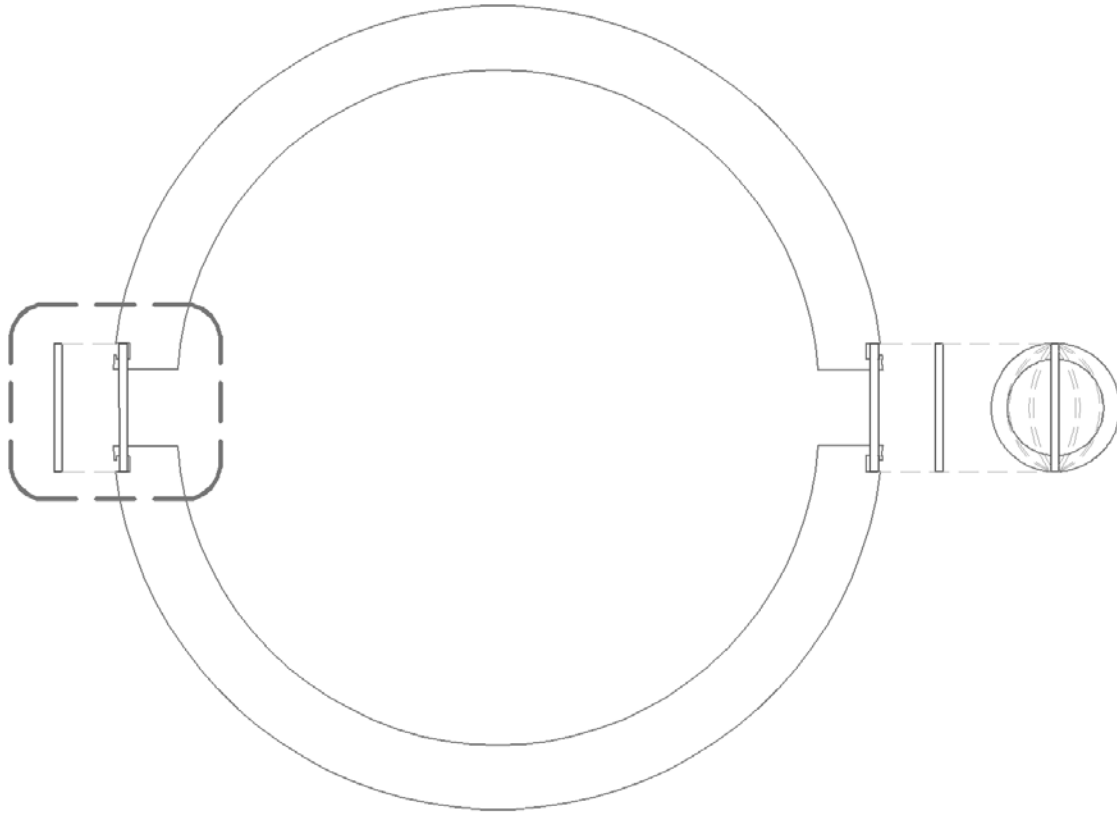


TAKEN APART



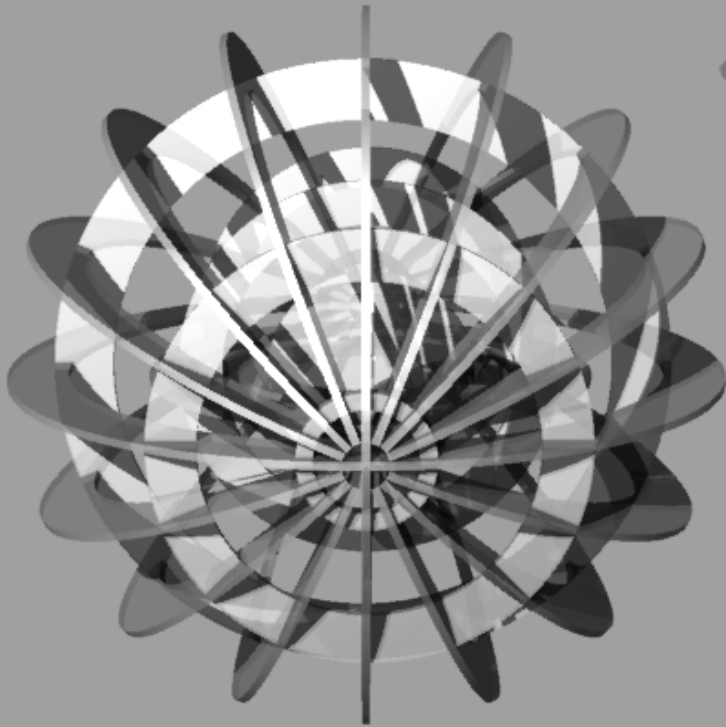
PROBLEM #1 - NOT  
ENOUGH STABILITY

# THE "HOOK" METHOD

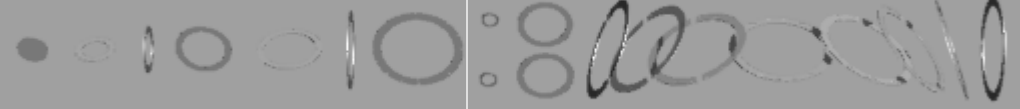




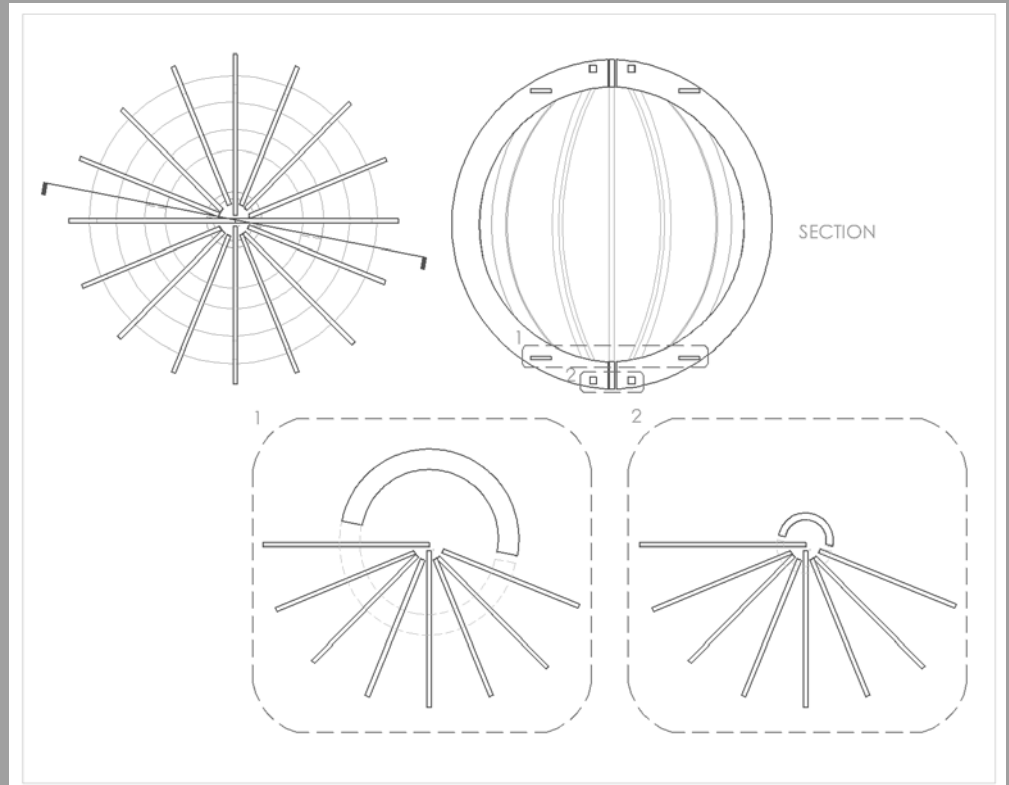
# MAKING IT WORK - EXTERIOR



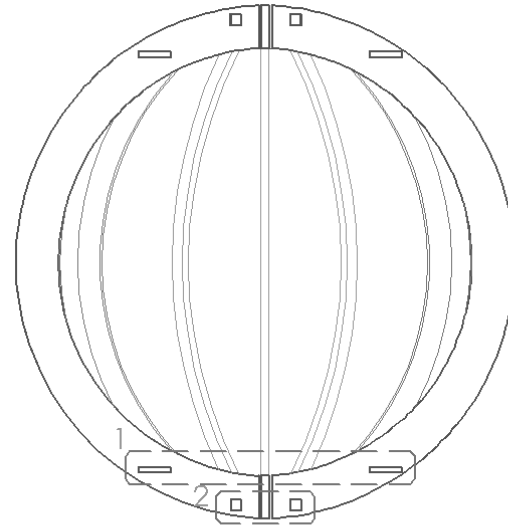
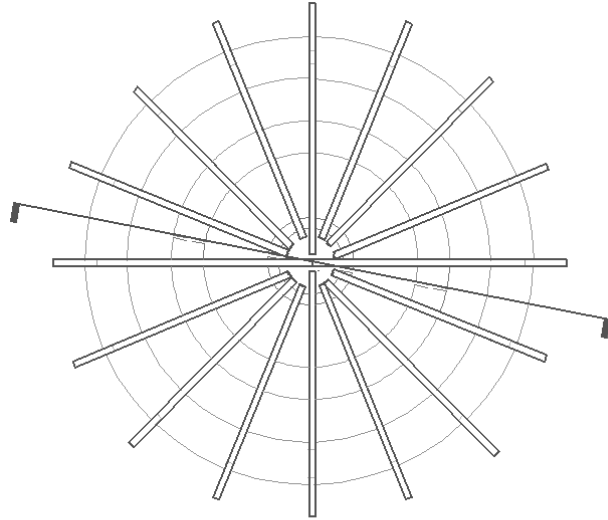
SOLUTION #2 -  
SLIDE/SLOT  
METHOD



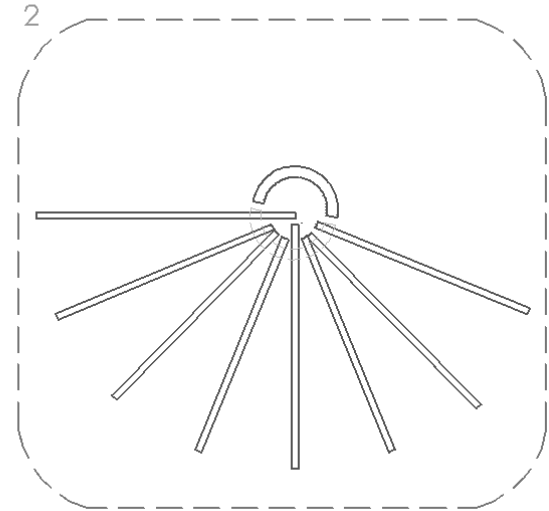
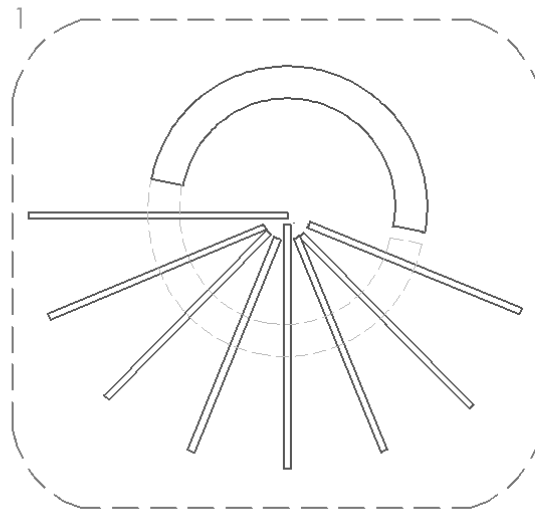
TAKEN APART



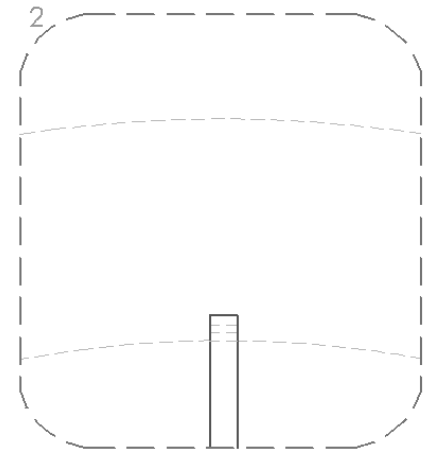
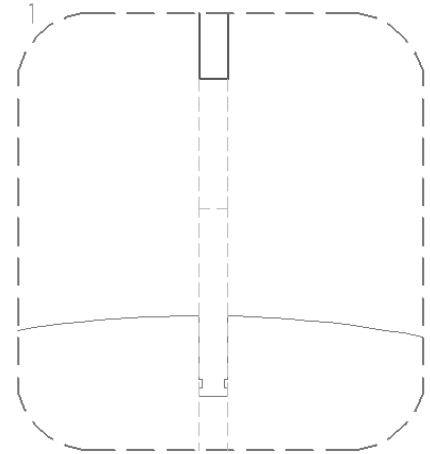
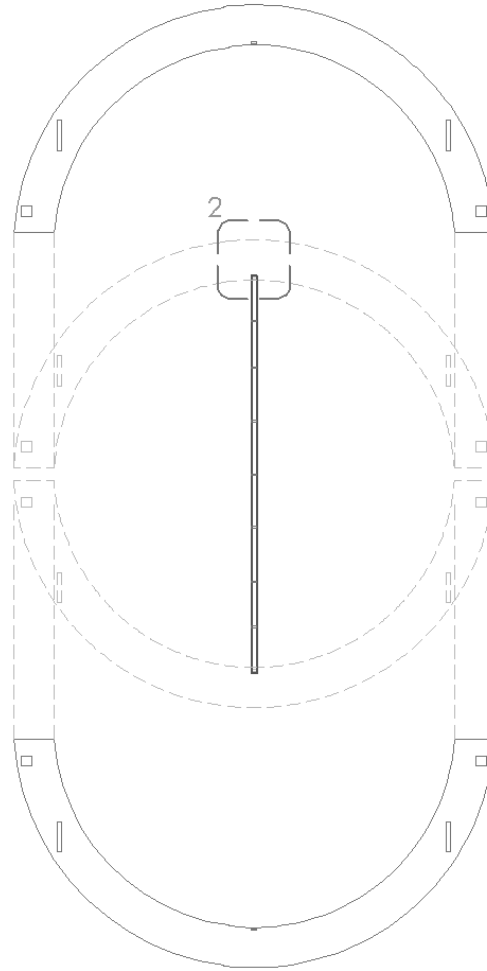
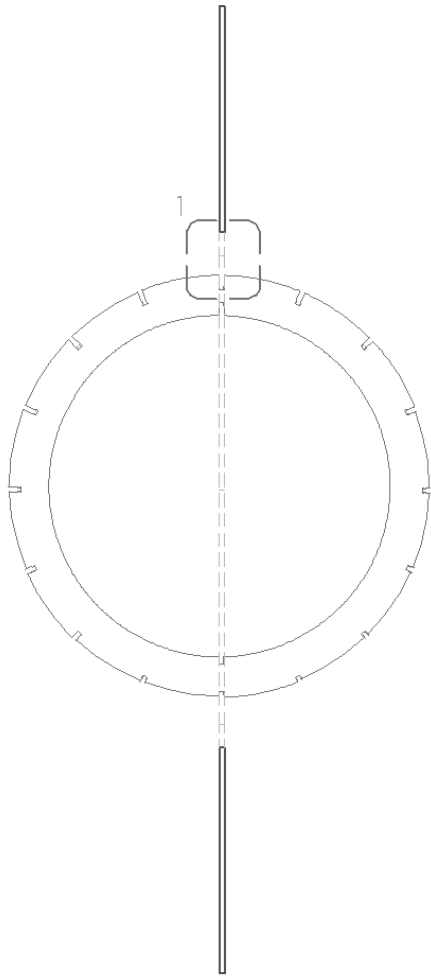
# "SLIDE/SLOT" METHOD



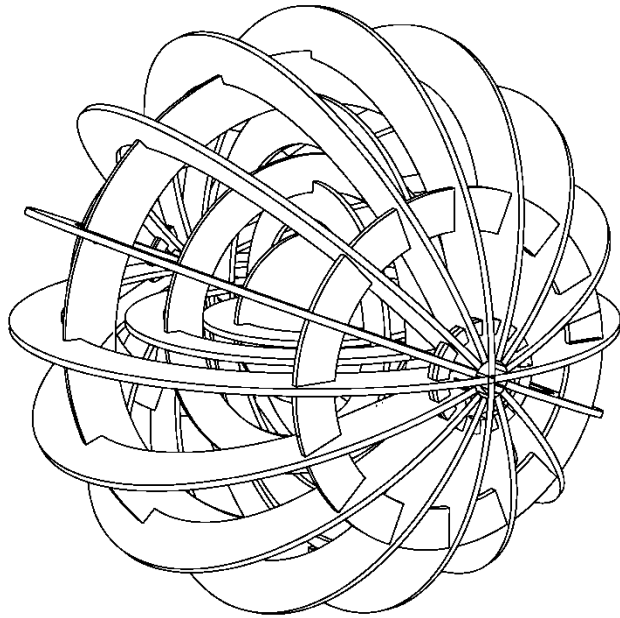
SECTION



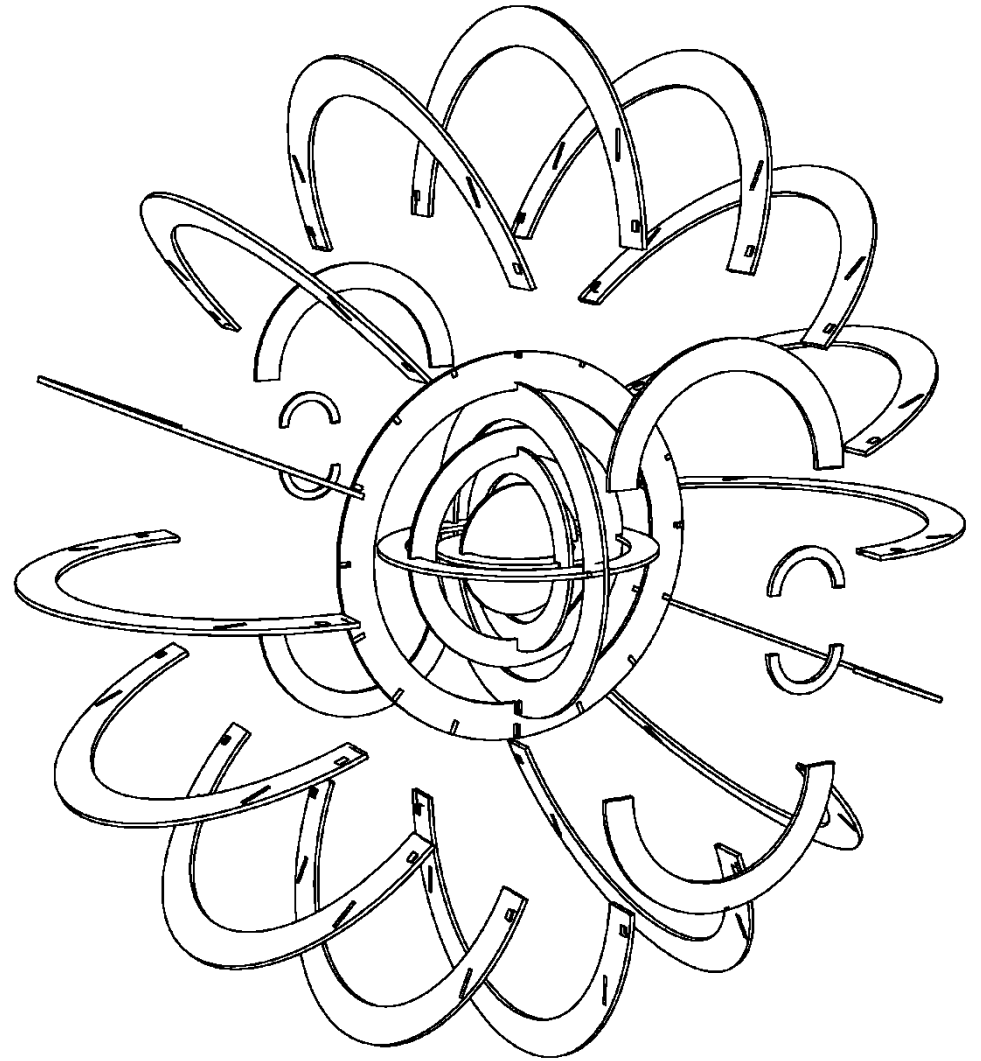
# OUTTER RINGS MODIFICATION – “SLIDE AND SNAP” METHOD



# DRAWINGS

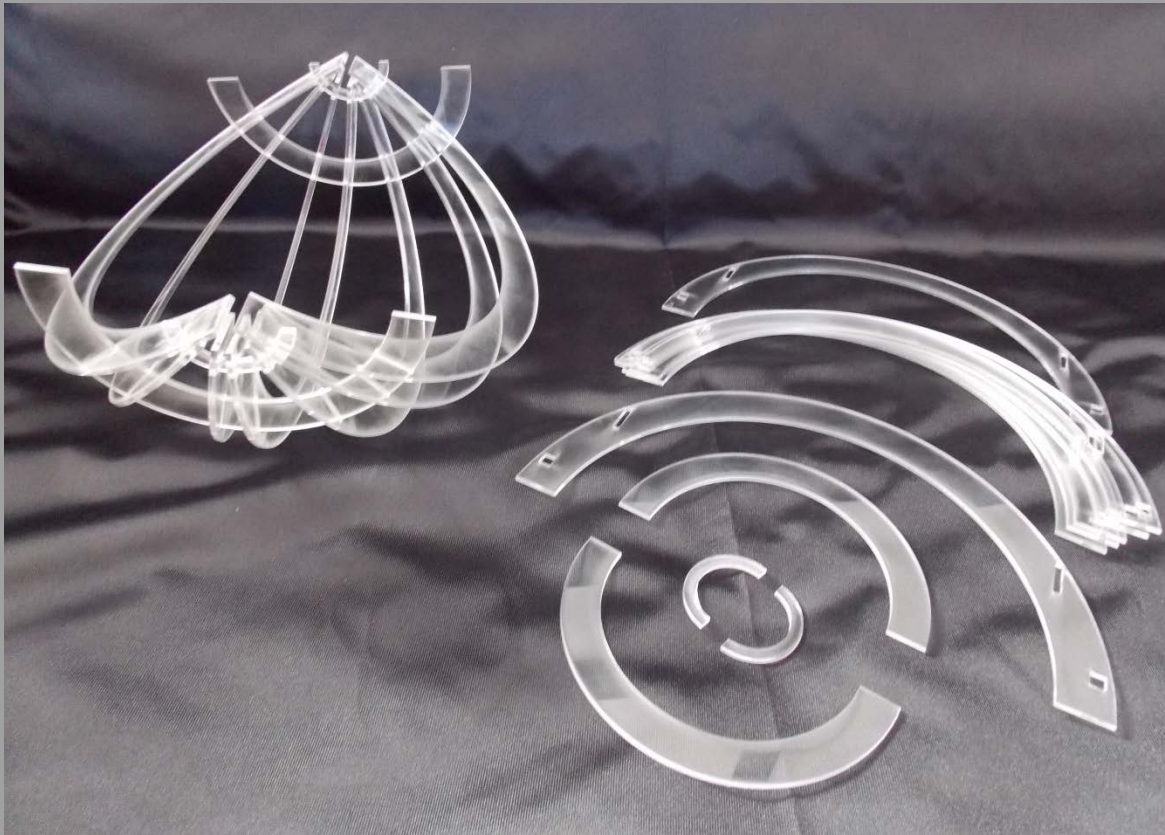
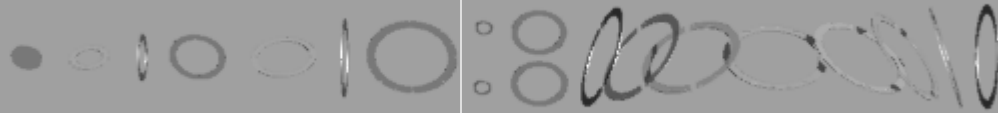


PERSPECTIVE

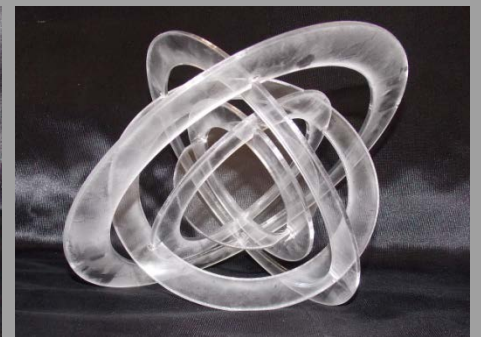


EXPLODED  
ISOMETRIC

# MAKING IT WORK – PROCESS

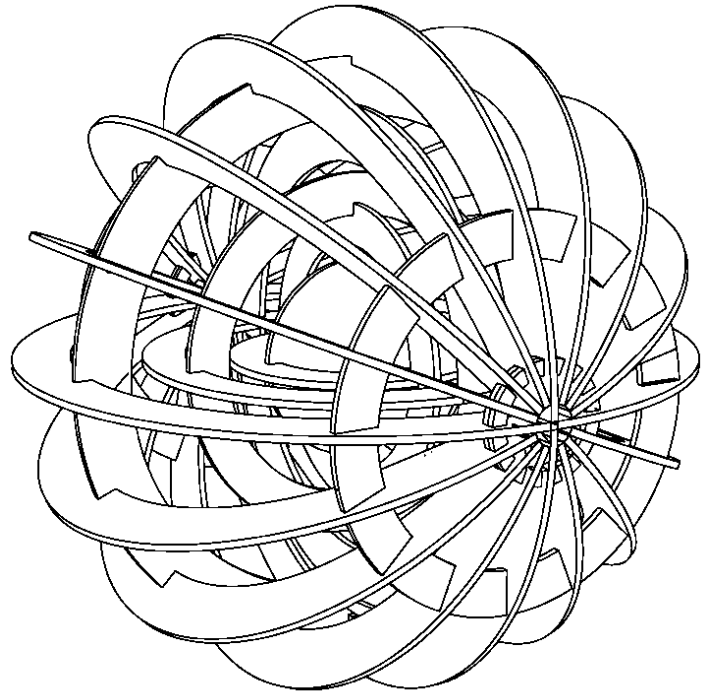


# FINISHED PRODUCT

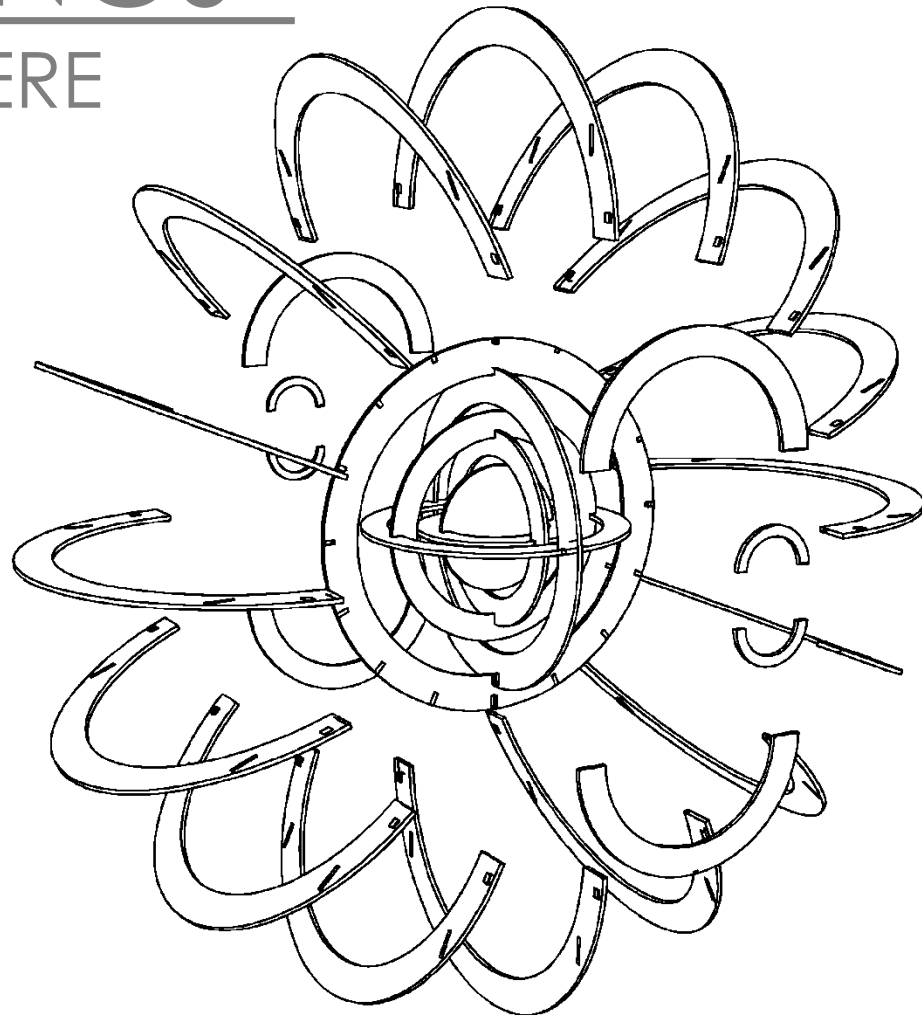


# "SPHERE OF RINGS"

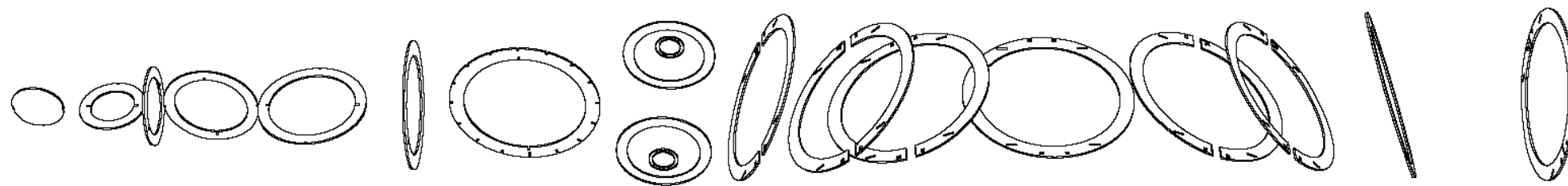
SELF-STRUCTURAL SPHERE



PERSPECTIVE

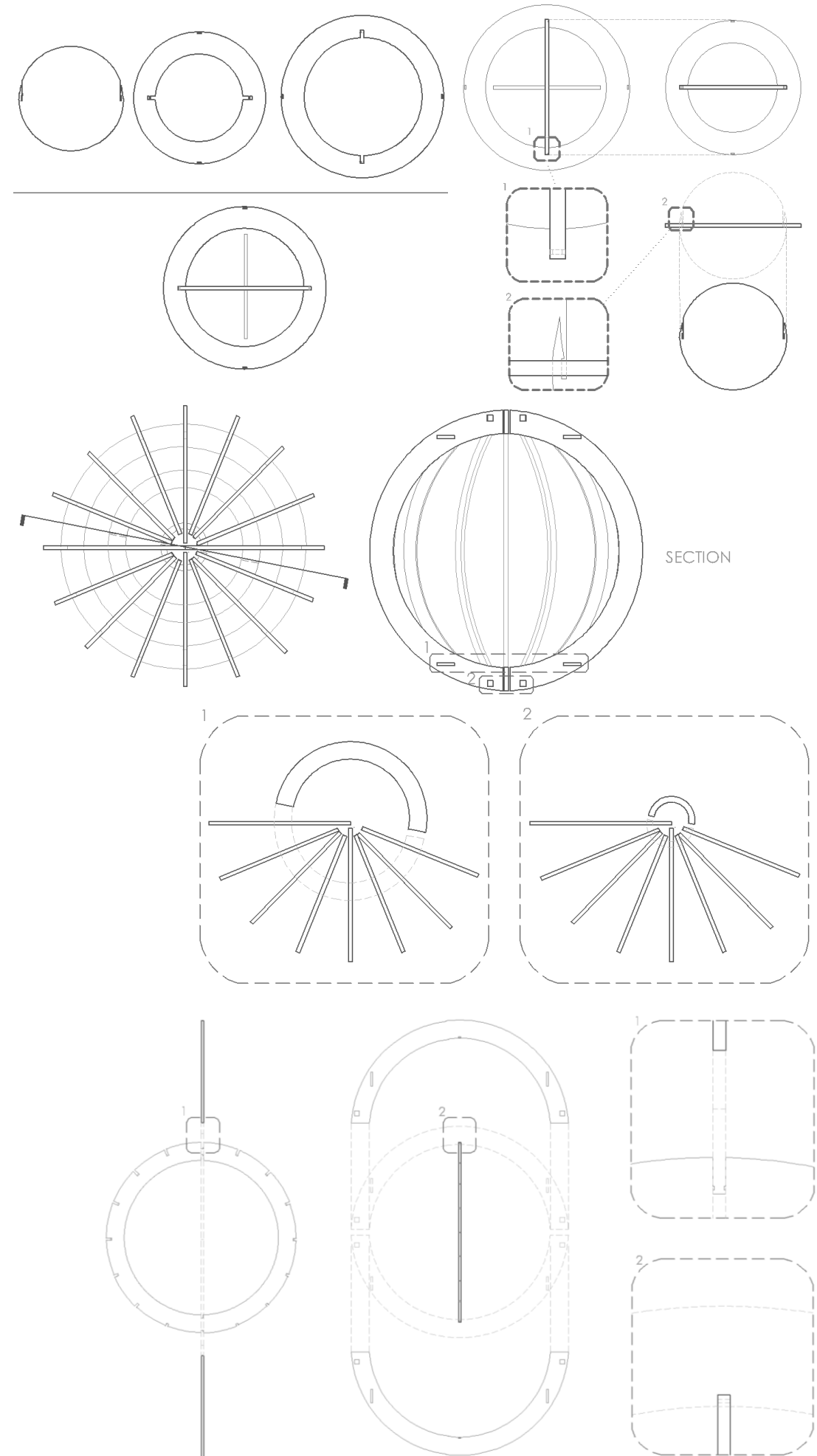


EXPLODED ISOMETRIC



SPHERE TAKEN APART

## DETAILS



SECTION