

## Exercise 1 Review Sheet

### The Language of Anatomy

Name: Gloria Rodriguez

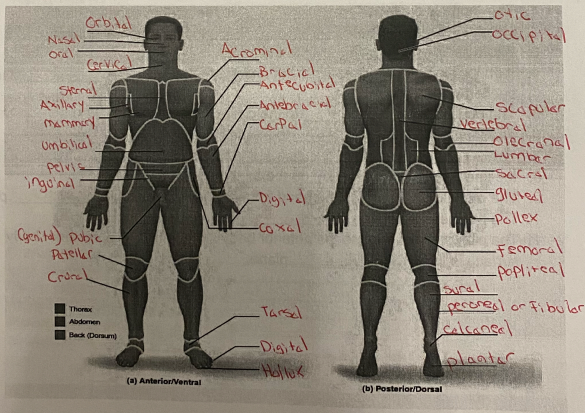
Lab Time/Date: Bio 2311 - OL29

### Regional Terms

1. Describe completely the standard human anatomical position.

The standard human anatomical position is when the body is standing up straight and facing forward. The legs are straight, and feet are slightly apart from one another and turned outward slightly.

2. Use the regional terms to correctly label the body regions indicated on the figures



## Directional Terms, Planes, and Sections

3. Define *plane*:

A plane in anatomy is a hypothetical plane used to transect the body in order to describe the location of structures or the direction of movements and 3 main planes are used.

4. Several incomplete statements appear below. Correctly complete each statement by choosing the appropriate anatomical term from the choices. Use each term only once.

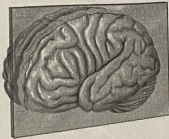
- anterior
- distal
- frontal
- inferior
- lateral
- medial
- posterior
- proximal
- superior
- sagittal
- transverse

1. The thoracic cavity is superior to the abdominopelvic cavity.
2. The trachea (windpipe) is anterior to the vertebral column.
3. The wrist is proximal/superior to the hand.
4. If an incision cuts the heart into left and right parts, a sagittal plane of section was used.
5. The nose is medial to the cheekbones.
6. The thumb is lateral to the ring finger.
7. The vertebral cavity is posterior to the cranial cavity.
8. the knee is inferior to the thigh.
9. The plane that separates the head from the neck is the transverse plane.
10. The popliteal region is distal to the patellar region.
11. The plane that separates the anterior body surface from the posterior body surface is the frontal plane.

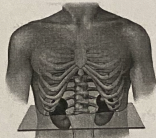
5. Correctly identify each of the body planes by writing the appropriate term on the answer line below the drawing.



(a) midsagittal plane



(b) Frontal Coronal plane



(c) Transverse plane

### Body Cavities

Name the muscle that subdivides the ventral body cavity

Diaphragm

Which body cavity provides the least protection to its internal structures? Abdominal

For the body cavities listed, name one organ located in each cavity

Cranial cavity the brain

Vertebral cavity spinal cord

Thoracic cavity thymus gland

Abdominal cavity stomach

Pelvic cavity urinary bladder

Mediastinum heart