



SPRING-SUMMER HAUTE COUTURE 2018



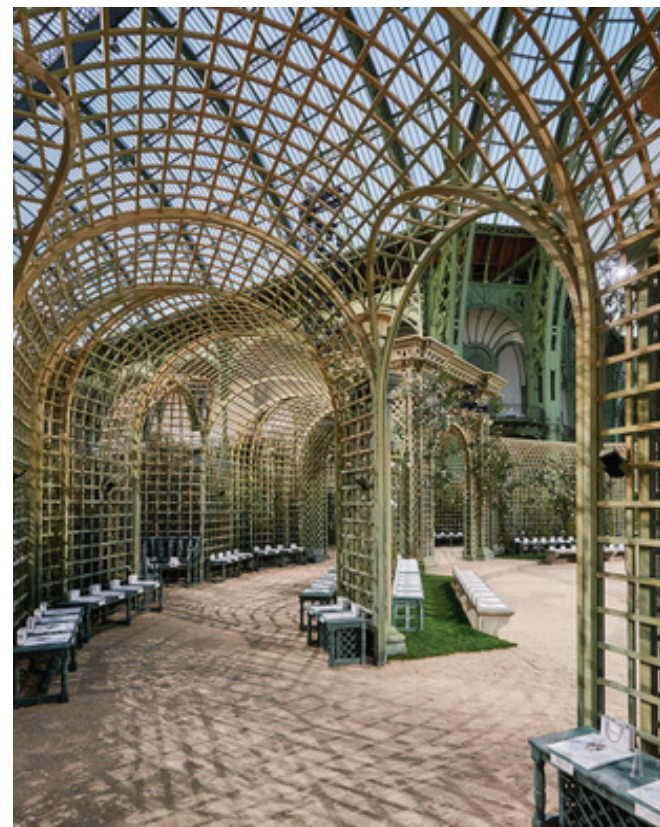
The House of Chanel is thrilled to present their Spring-Summer Haute Couture 2018 collection on Tuesday, January 23rd in the Grand Palais. Allow this collection to show how the brand, Chanel, is continuing to live up to the legacy and its name.

Experience what Karl Lagerfeld envisioned for this collection with creations that define femininity, couture, and most importantly, “French fantasy.” The Spring-Summer Haute Couture 2018 show will prove the work and worth done by Chanel’s ateliers. Lagerfeld calls this collection, “haute, haute couture...because it’s all in the construction” as he created the “*French fantasy*.”

CHANEL

DECOR

THIS SEASONS SHOW IS BASED AROUND A CASTLE GARDEN DECOR, HIGH ARCHED CEILINGS WITH PLANT AND FAUNA SCATTERED THROUGHOUT.





THE RUNWAY

FIRST LOOK

ON 1910, GABRIELLE CHANEL OPENED THE EYES FOR PEOPLE ACROSS THE GLOBE. SHE DID NOT WALK THE ROADS IN WHICH WOMEN WERE PERCEIVED TO FOLLOW. MADEMOISELLE CHANEL PAVED HER OWN ROAD, NOT ONLY FOR HERSELF, BUT FOR EVERYONE. CHANEL WAS NOT MEANT TO BE JUST LIKE THE OTHER BRANDS, IT WAS MEANT TO BE UNIQUE, ELEGANT, FEMININE, AND MOST IMPORTANTLY DEFINE MADEMOISELLE HERSELF BY BEING YOURSELF. WHAT THIS CHANEL BEGAN REVOLUTIONIZED FASHION AND THE WORLD AS A WHOLE. OPPOSING THE THOUGHTS OF WOMEN RETURNING BACK TO CORSETS AFTER THE FIRST WORLD WAR, MADEMOISELLE CHANEL HAD LAUNCHED HER ICONIC PIECE, THE TWEED JACKET. WHILE KEEPING THE COMFORTABLE, ELEGANT AND UNIQUE STYLE, KARL LAGERFELD HAS PUT HIS OWN MODERN TOUCH.

LOOK 1
MODEL: LUNA BIJL



MOOD OF THE SHOW: FRENCH FANTASY



LOOK 2
MODEL: NINA MARKER



LOOK 6
MODEL: CAROLINA THALER



LOOK 38
MODEL: SOO JOO PARK

MOOD OF THE SHOW: FRENCH FANTASY



LOOK 41
MODEL: SIJIA KANG



LOOK 67
MODEL: FELICE NOORDHOFF



LOOK 68 & THE FINAL LOOK
MODEL: LUNA BIJL



ACCESSORIES

HAT VEIL USED TO ACCESSORIZE
THE SILHOUETTES

