

1500+ The beginnings Review

HISTORY OF NEW YORK CITY ARCHITECTURE

The Land and Its Inhabitants

1600-1785: Transplantations to the New World

The Europeans Arrive

Dutch Nieuw Amsterdam 1625-1666

The Royal Colony of New York 1664-1785

The Land-Characteristics



- Location

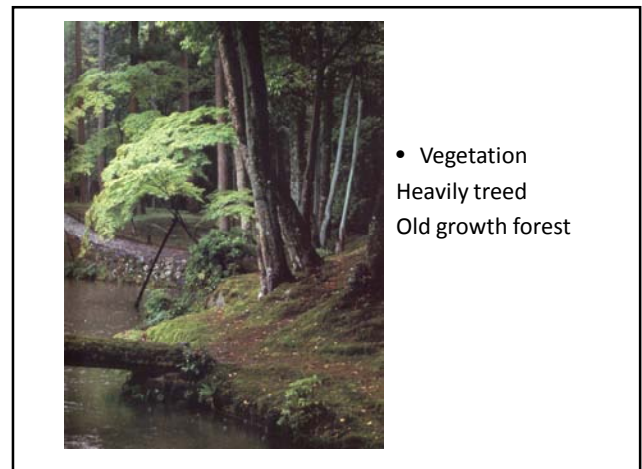
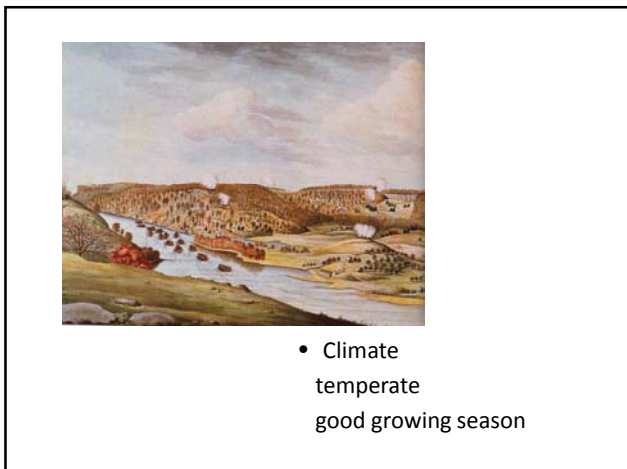
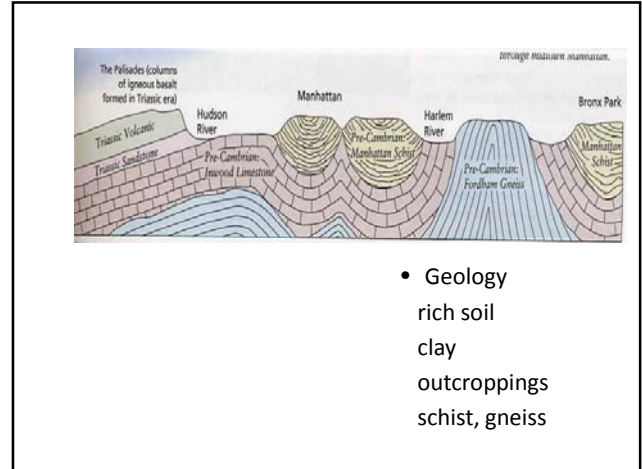


- Topography
Very hilly
Also "Flatlands"
Swampy



- Infill

1500+ The beginnings Review



1500+ The beginnings Review



- Natural resources
- Abundant food
- Fresh water
- Fur trading

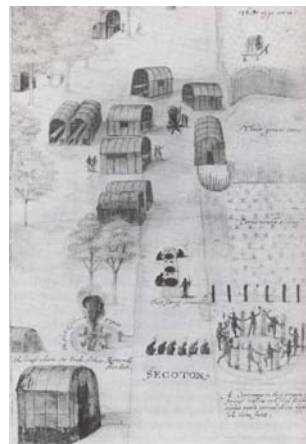
Native Americans



- Typical buildings
- Wigwam



- Long House



- Village

1500+ The beginnings Review



- Ownership
Myth of purchase

1600-1785: Transplantation to the New World



- The Europeans Arrive
Why?



Settlements on east coast

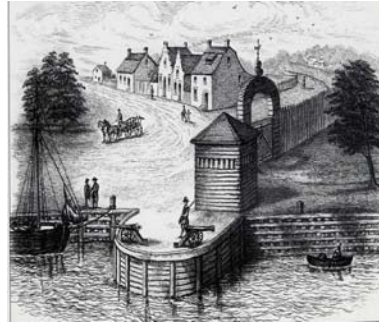
Dutch Settlement 1625-1664



1500+ The beginnings Review



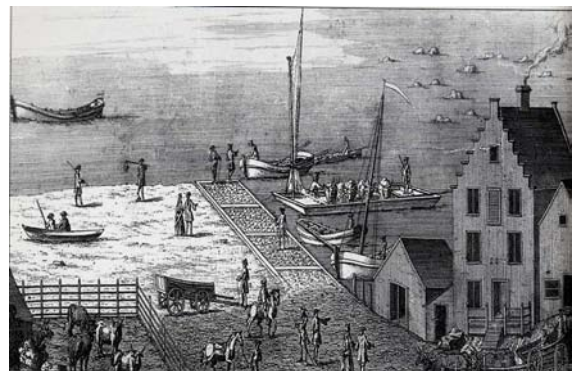
• Planning



• The Wall



• Broad Street canal



• Brooklyn ferry

1500+ The beginnings Review

Dutch Architecture



- Urban

*Pieter Claesen Wyckoff House, vernacular, ca 1652, 1740, 1820
bouwerries: Dutch farms



Characteristics of Dutch Colonial Style

- Heavy hewn timber frame
- Double pitched gambrel roof
- Low roof cantilevered to form canopy over windows and entrance
- Shingles cover both roof and exterior walls
- Additions placed to sides
- Separate fireplaces at each end of house
- Single room for all activities
- Low ceilings to retain heat
- Few windows
- Large mass of masonry fireplace
- Open hearth

1500+ The beginnings Review



- Double pitched gambrel roof



- Low roof cantilevered to form canopy over windows and entrance



- Additions placed to sides

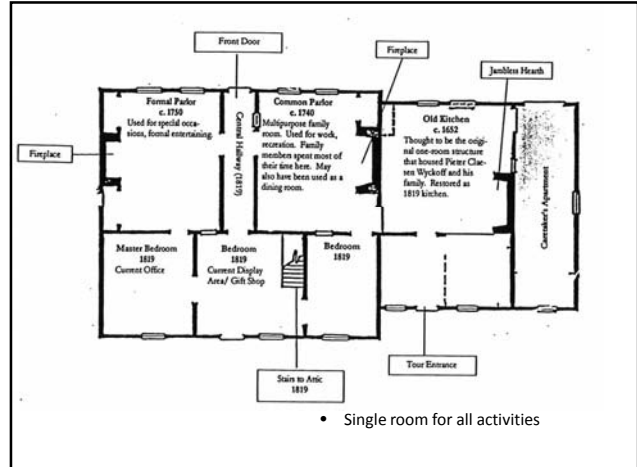


- Separate fireplaces at each end of house

1500+ The beginnings Review



- Exterior covered with narrow clapboards or split shingles



- Single room for all activities

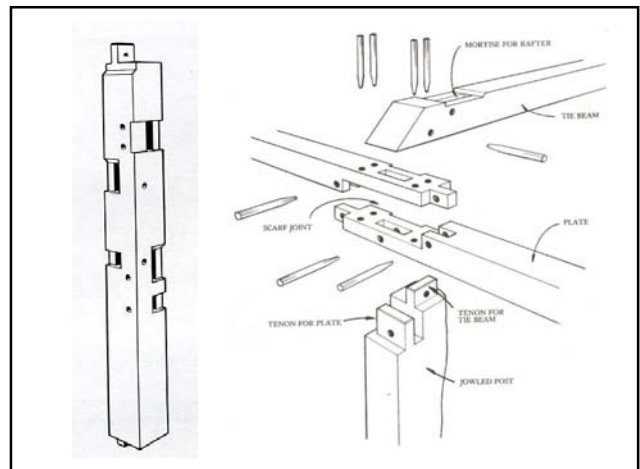
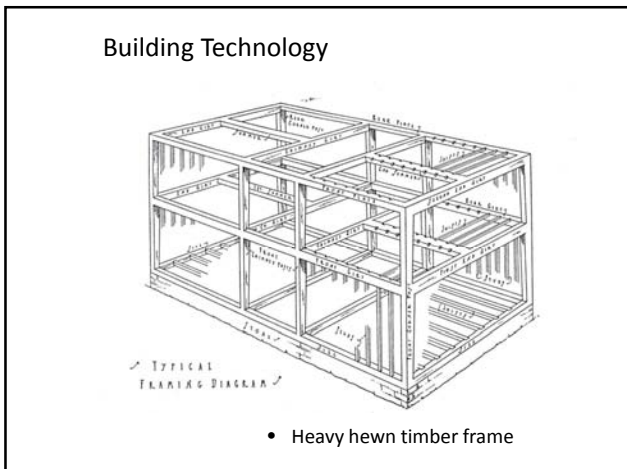
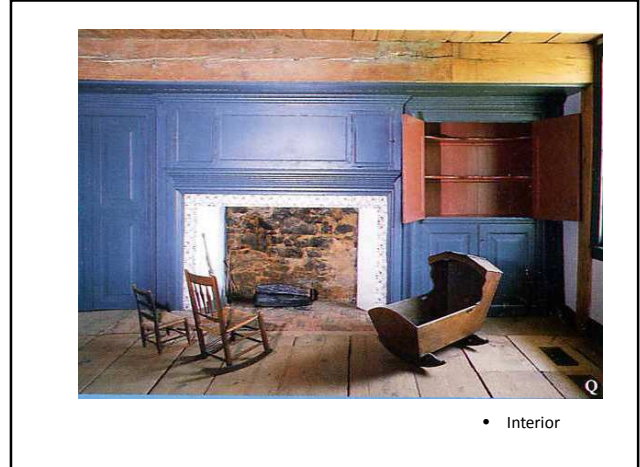
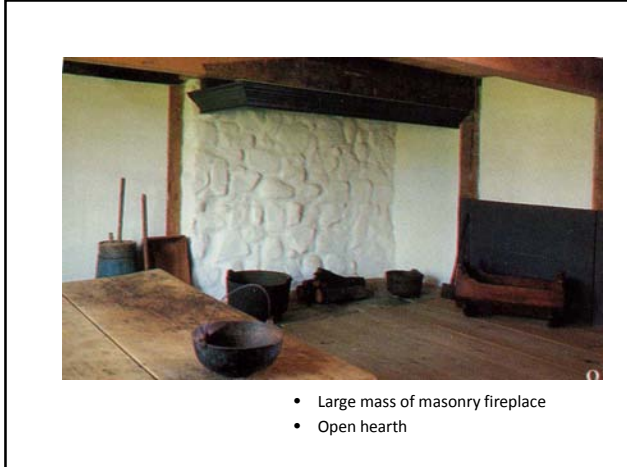


- Low ceilings to retain heat

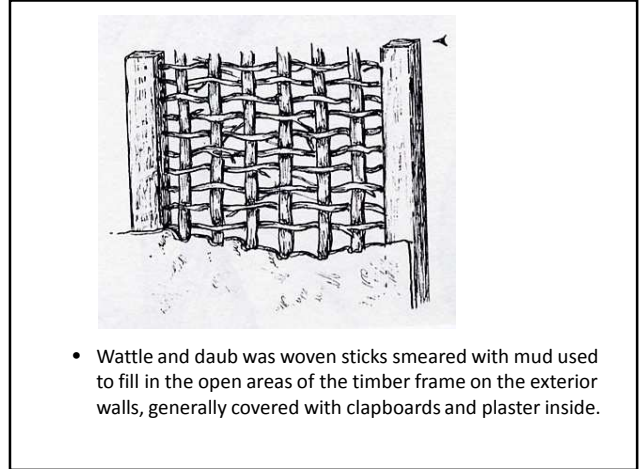
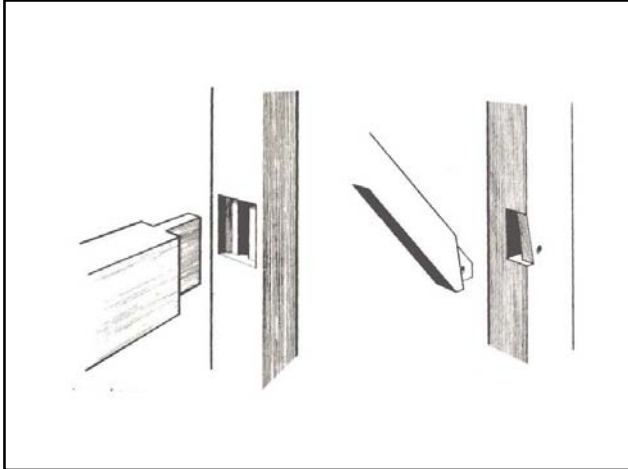


- Few windows

1500+ The beginnings Review



1500+ The beginnings Review



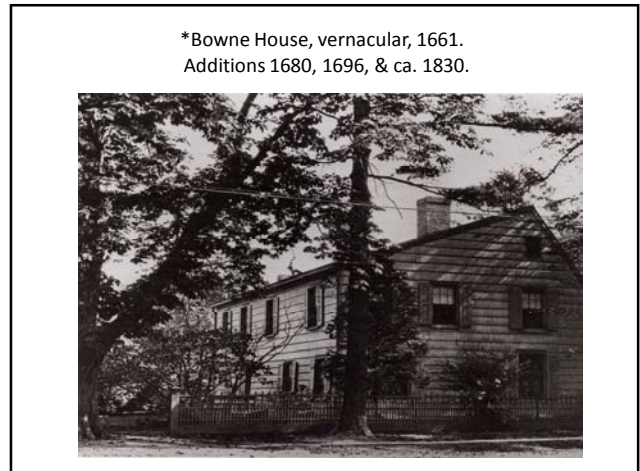
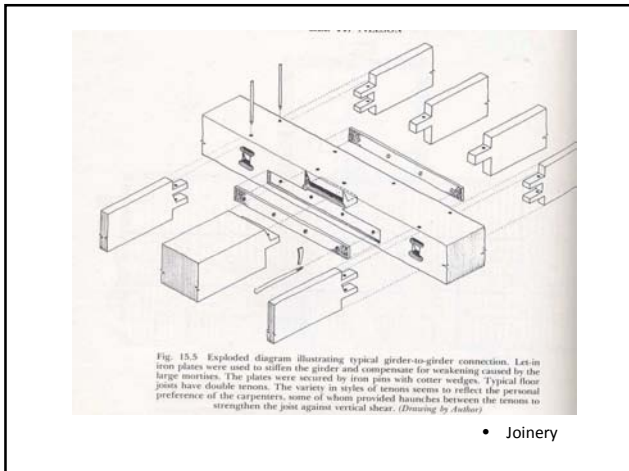
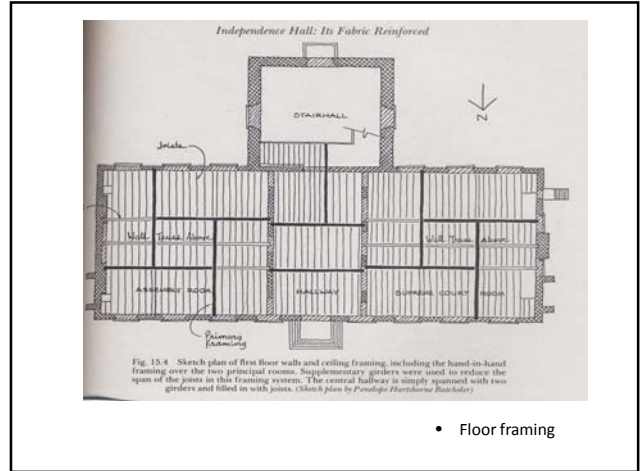
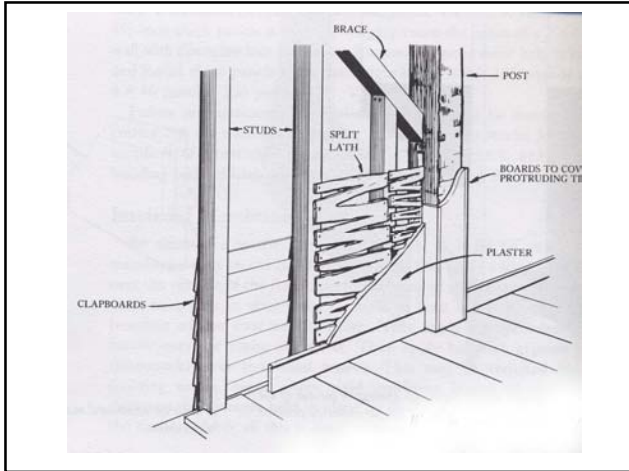
- Wattle and daub was woven sticks smeared with mud used to fill in the open areas of the timber frame on the exterior walls, generally covered with clapboards and plaster inside.



- Brick infill



1500+ The beginnings Review



1500+ The beginnings Review

*Hendrick I. Lott House, vernacular, 1720.
Main house & west wing, 1800.



*Dyckman House, vernacular, ca 1783.
Oldest farmhouse in Manhattan (Inwood)



The English colony of New York 1664-1785



James, Duke of York,
Brother of King Charles II



• Land Use 1664

1500+ The beginnings Review

The Georgian Colonial Style
1770-1785

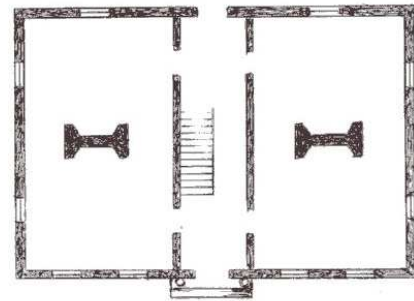


Characteristics of the Georgian Colonial Style

- Axial entrances
- Rigid symmetry
- Generally used hipped roofs
- 12 over 12 double hung windows
- Geometrical proportions
- Double or 2 story portico
- Much use of ornamentation: pediments, balustrades, Palladian window, dentils, fanlight, quins



- Rigid symmetry



GEORGIAN TWO CHIMNEY BACK-TO-BACK
FIREPLACES

- Axial entrances

1500+ The beginnings Review



- Generally used hipped roofs



- 12 over 12 double hung windows



- Geometrical proportions



- Double or 2 story portico

1500+ The beginnings Review



- Portico is a porch consisting of a roof supported by columns. It usually protects the main entrance of a building.

- Much use of ornamentation, such as
 - Balustrades
 - Pediments
 - Palladian window
 - Fanlight
 - Quions

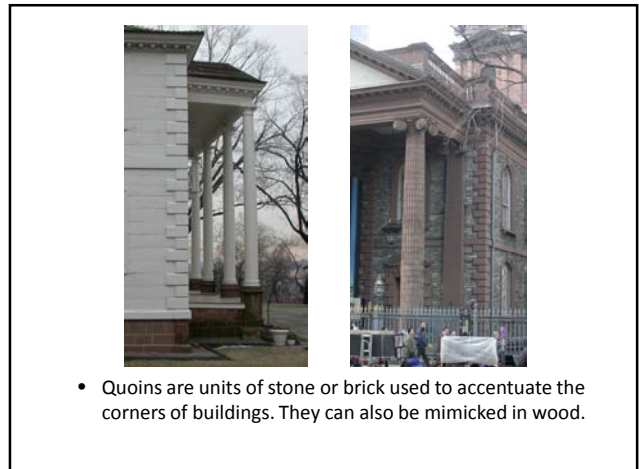
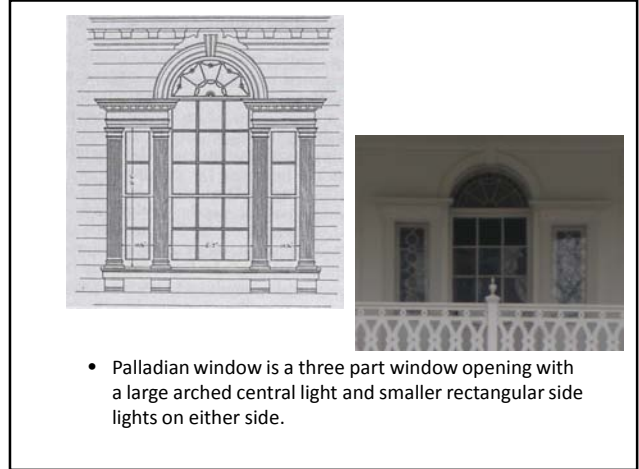


- Balustrade is a series of vertical posts used to support a top rail, a sometimes a bottom rail.



- Pediment is, in classical architecture, the triangular gable end of the roof enclosed by a horizontal cornice. The center can be occupied by sculpture. There are several variations.

1500+ The beginnings Review



1500+ The beginnings Review

*Valentine-Varian House Museum of Bronx History, vernacular, 1758.



*Van Cortlandt Mansion Museum, vernacular, 1748-1749 - Bronx



*St. Paul's Chapel & Churchyard, Thomas McBean, 1764-1766



1500+ The beginnings Review

*Morris-Jumel Mansion, vernacular, 1765. Remodeled, 1810
Manhattan's oldest house (Washington Heights), Washington HQ

