

PARCEL/ BOARD NO	ROOM LOCATION	BOARD REFERENCE	MATERIAL CODE	Use Type	Material Type	Material / Product Name	Color	Finishes	Size	Source	Product Line	DATE	RIC / DRP MATERIAL REVIEW	DATE	REVISION 2-29 JUNE 2011	DATE	REVISION 2- 20 JUNE 2012
5.04/07	WARM PALETTE- LIVING ROOM, BEDROOMS & KITCHEN	(WF03)		Warm Palette- Living Room, Bedrooms & Kitchen Corridor Skirting	WOOD Engineered Wood Flooring	150 oak campagnard - aspect naturel / Linea 90 Oak Aspect Natural	Oak	Aspect Natural	plank Size: 14.5mm thick x 9 cm wide x 50 120 cm long	Liston Giordano by Faden	WOOD			27-6-2011	APPROVED (See page 38.1)		
5.04/07	WARM PALETTE- LIVING ROOM, BEDROOMS & KITCHEN			Warm Palette- Living Room, Bedrooms & Kitchen Counter top & Back Splash ST 13	ENGINEERED STONE	BIANCO NACARADO	BEIGE	Polished	20mm thick with a 40mm eased edge square profile	AL-MULHEM & AL-HEKMAA - COMPAC	ENGINEERED STONE				ONGOING	20-2-2012	APPROVED. (300 X 300)SAMPLE (See page 38.3)
5.04/07	WARM PALETTE- LIVING ROOM, BEDROOMS & KITCHEN	ST - 20		Warm Palette- Living Room, Bedrooms & Kitchen WARM PALETTE KITCHEN FLOOR	STONE Marble	BOTTICINO FIORITTO	Light Beige	Honed	REFER DWGS	MARBLE ART	MARBLE					20-2-2012	APPROVED. (600 X 300)SAMPLE (See page 38.4)
5.04/07	WARM PALETTE- LIVING ROOM, BEDROOMS & KITCHEN			Warm Palette-Living & Dining Room Floor	LIMESTONE	Cedar Stone	Light Brown	Honed	REFER DRAWINGS	MARBLE ART	LIMESTONE					24-05-12	APPROVED (600X600)SAMPLE SEE PAGE 38.5
5.04/07	WARM PALETTE- LIVING ROOM, BEDROOMS & KITCHEN	(P701)		Warm Palette-Living Room, Bedrooms & Kitchen Ceiling & Wall	Paint	Interior Latex Paint	COLOR:ROYY BASE 83/043 TREASURED MOMENT RAL-9003	EGGSHELL	n/a	www.gildden.com (800)454-3336(212) 966 3466 OR EQUAL APPROVED	PAINT	1-May-11	APPROVED SUBJECT TO COMMENT- COMMENT-CHANGE TO SPECIAL PAINT- CONSIDER AND PRESENT TO DRP		APPROVED. TO MOCK UP (PREVIOUS COMMENT INCORRECT)		
5.04/07	WARM PALETTE- LIVING ROOM, BEDROOMS & KITCHEN	(ST10)		Warm Palette-Living & Dining Room Floor	STONE-Marble	Marble (Interiors) Empresso Light Turkish Marble	Light brown (RAL N/A)	Honed	600 X 600 X 30 MM TBD	MARBLE ART	STONE	1-May-11	ONGOING		ONGOING		NOT USED (ITEM REPLACED WITH CEDAR STONE)
5.04/07	WARM PALETTE- LIVING ROOM, BEDROOMS & KITCHEN	(MTL11)		Warm Palette-Living room, Bedrooms & Kitchen Door, Fittings & Hardware	METAL Bronze	NA	Medium-Stainary-Stained BHMA 613	Clear-Organic-Coating- Vertical-Finished Oil-Rubbed Bronze	refer to drawings / N/A	by elevato manufacturer OR EQUAL APPROVED- By Hardware Manufacturer	METAL	1-May-11	APPROVED SUBJECT TO COMMENT- COMMENT-SUBSTITUTE TO BE CROSS ANNOTATED PER TO APPROVED AND APPROVED TO APPROVED CONSIDER AND PRESENT TO DRP		ONGOING		NOTE: ITEM IS BEING ADDRESSED IN HARDWARE PACKAGE.
5.04/07	WARM PALETTE- LIVING ROOM, BEDROOMS & KITCHEN	(WF03)		Warm Palette- Living Room, Bedrooms & Kitchen Skirting	WOOD Engineered Wood Flooring	Oak flooring Oak-Hempshire	NA	Aspect Natural	TBD	www.kahrs.com-(407)-260-9910x120-8800-8000 8243-35-OR-EQUAL-APPROVED	WOOD	1-May-11	APPROVED SUBJECT TO COMMENT- COMMENT-SUBSTITUTE TO BE CROSS ANNOTATED PER TO APPROVED AND APPROVED TO APPROVED CONSIDER AND PRESENT TO DRP		ITEM REPLACED AS BELOW		NOT USED (ITEM REPLACED WITH 150 OAK CAMPAGNARD - ASPECT NATUREL)
5.04/07	WARM PALETTE- LIVING ROOM, BEDROOMS & KITCHEN	(ST 13)		Warm Palette- Living Room, Bedrooms & Kitchen Counter top & Back Splash ST 13	STONE-Quartz	OH-White-Quartz-Stone- AZURE-PEARL-UNFINISHED	Off-White (RAL-N/A)	Polished	600 X 600 X 30 MM TBD available thickness 34"-to-1-3/4" 20mm thick with a 40mm eased edge square profile	www.cereston.com-(714)-745-0997-OR-EQUAL- APPROVED	QUARTZ	1-May-11	REJECTED, COMMENT-CHANGE TO MARBLE COMMENT-CHANGE TO MARBLE CONSIDER AND PRESENT TO DRP		ITEM REPLACED AS BELOW		NOT USED (ITEM REPLACED WITH BIANCO NACARADO MARBLE)
5.04/07	WARM PALETTE- LIVING ROOM, BEDROOMS & KITCHEN	(CT05)		Warm Palette- Living Room, Bedrooms & Kitchen WARM PALETTE KITCHEN FLOOR	PORCELAIN	Porcelain tile Crema Eda Slate	Off-White	Honed	TBD	www.granitfandre.com (036) 80088 827065 info@granitfandre.it OR EQUAL APPROVED	PORCELAIN TILE	1-May-11	REJECTED, COMMENT-CHANGE TO MARBLE COMMENT-CHANGE TO MARBLE CONSIDER AND PRESENT TO DRP		ONGOING		NOT USED (ITEM REPLACED WITH BOTTICINO FIORITTO)
5.04/07	WARM PALETTE- LIVING ROOM, BEDROOMS & KITCHEN	(W03)		Warm Palette-Living Room, Bedrooms & Kitchen Kitchen Cabinet	WOOD Teak Wood	Teak Wood Veneer on Standard Veneer Core	Wood Veneer	TBD	TBD	LDA request assistance from SRG OR EQUAL APPROVED	WOOD	1-May-11	APPROVED SUBJECT TO COMMENT- COMMENT-SUBSTITUTE TO BE CROSS ANNOTATED PER TO APPROVED AND APPROVED TO APPROVED CONSIDER AND PRESENT TO DRP		ONGOING	20.2.2012	APPROVED (See Page 38.2)

BOARD #07
Warm Palette

OK
with
1.5.11

↙ possible larger sample

MTL11

WV03

ST13

ST10

CT05

WF03

PT01

No

+
↙

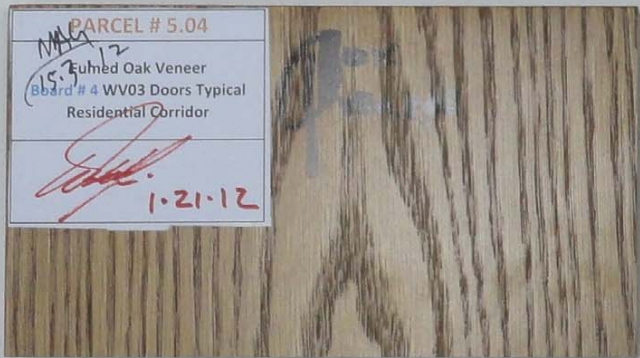
color only

PARCEL 5.04
SOM 2011

**PARCEL 5.04
SOM**



PARCEL # 5.04
 Registered Walnut Veneer
 Board # 13 - WDP04
 WV01 Equal to WDP-01
 Doors & Wood Panelling
 1-21-12



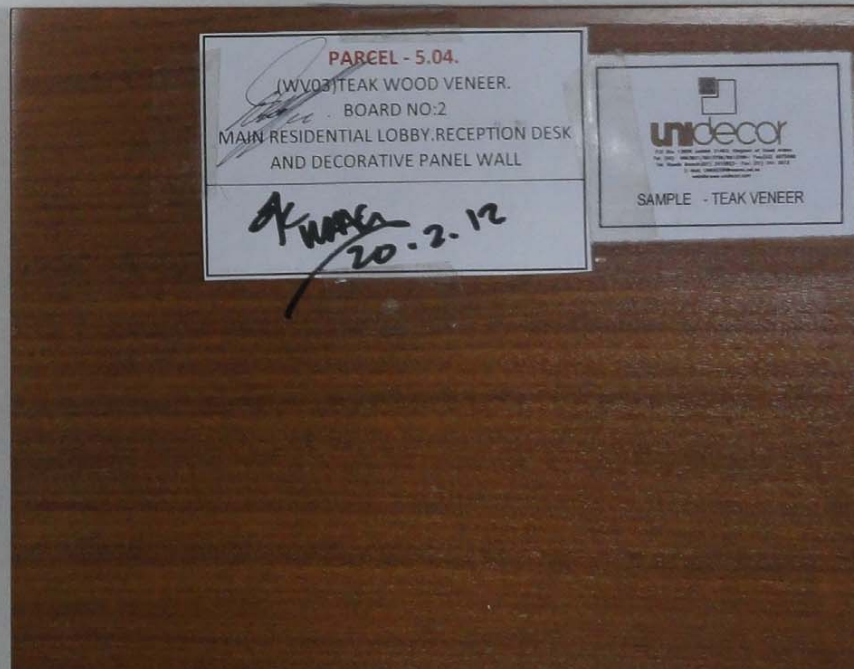
PARCEL # 5.04
 Eumed Oak Veneer
 Board # 4 WV03 Doors Typical
 Residential Corridor
 1-21-12



FORMICA
F 7961 VEL SNOW
 20-2-12
 NOTE: WOODEN PAINTED FINISH PT02 RAL 7042 CHANGE
 TO FORMICA F 7961 VEL SELECTED BY THE LDA REFER
 TO # RFI 1110-504-REL-A-3458



PARCEL - 5.04.
 (WV-05)PLAIN SLICED RED OAK CLEAR.
 LOCATION: BEDROOM, STAIR
 A, CORRIDOR, STAIRB, ELEV. VESTIBULE, KITCHEN,
 BATHROOM, LAUNDRY, STAIR C, MECH, OFFICE
 20-2-12



PARCEL - 5.04.
 (WV03) TEAK WOOD VENEER.
 BOARD NO: 2
 MAIN RESIDENTIAL LOBBY, RECEPTION DESK
 AND DECORATIVE PANEL WALL
 20-2-12

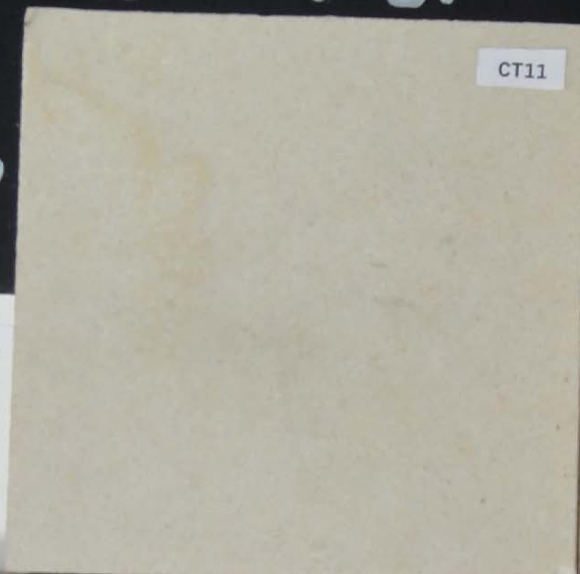
Unidecor
 SAMPLE - TEAK VENEER

BOARD #08
Warm Palette Bathroom

OK
WAG
1.5.11

not for
master of powder

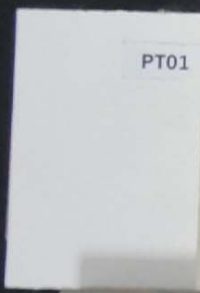
std only
→



CT11



ST10



PT01



CT07



WV04

std only ↑

colour only ↗

PARCEL 5.04
SOM 2011

BOARD #08
Warm Palette Bathroom

OK
WAG
1.5.11

not for
master of powder

std only

Atlas concorde
style
crema
Marfil
5.04
B#8



PTC



std only

colour only

PARCEL 5.04
SOM 2011

42.1
REV 02



Typical 3 Bedroom Upper Level Plan (Warm Palette)



Typical 3 Bedroom Lower Level Plan (Warm Palette)

440-30



Interior Elevation 1

Interior Elevation 2

Typical Master Bathroom (Warm Palette)



Interior Elevation 1
Scale 1/20



Interior Elevation 2
Scale 1/20



Typical Standard Bathroom (Warm Palette)



Interior Elevation 3

Typical Master Bathroom (Warm Palette)



Interior Elevation 4

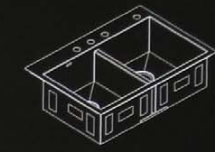
KOHLER.

VAULT™

SELF-RIMMING/UNDERCOUNTER KITCHEN SINK K-3820

- Features**
- 18-gauge stainless steel
 - Self-rimming or undercounter
 - Includes installation hardware
 - Double (equal) compartment
 - 33" (83.8 cm) x 22" (55.9 cm)

- Codes/Standards Applicable**
- Specified model meets or exceeds the following:
- ASME A112.19.3/CSA B45.4



- Colors/Finishes**
- NA: None applicable
- Accessories**
- CP: Polished Chrome
 - NA: None applicable
 - Other: Refer to Price Book for additional colors/finishes

Specified Model

Model	Description	Colors/Finishes
K-3820-3	Self-rimming/Undercounter kitchen sink - 3-hole	J NA
K-3820-4	Self-rimming/Undercounter kitchen sink - 4-hole	J NA

Optional Accessories

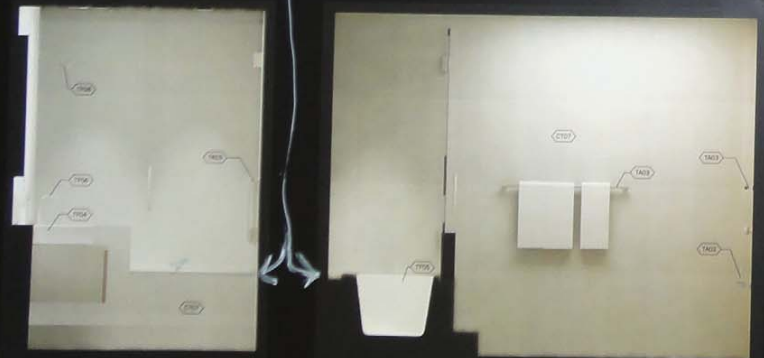
Model	Description	J NA	J CP	J Other
K-8801	Dishrainer, sink strainer			
1131881	Hardware kit for countertops with a 2-1/2" (6.4 cm) thickness or less			

Product Specification

The kitchen sink shall be 33" (83.8 cm) in length, 22" (55.9 cm) in width. Sink shall be made of 18-gauge stainless steel. Sink shall be undercounter or self-rimming. Sink shall be double equal compartments. Sink shall include installation hardware. Sink shall be Kohler Model K-3820-NA.

KF1
Not in Node

Marble tops
& shelves.



Interior Elevation 3
Scale: 1/8"

Interior Elevation 4
Scale: 1/8"

Typical Standard Bathroom (Warm Palette)

KOHLER FAUCETS

SIMPLICE®

PULL-DOWN KITCHEN SINK FAUCET K-596 ALSO K-597 ADA

- Features**
- Metal construction
 - One-piece, self-contained ceramic disc valve allows both volume and temperature control
 - Temperature memory allows faucet to be turned on and off at any temperature setting
 - Touch control for stream-to-spray water flow
 - Promotions technology with nylon hose and ball joint for easy operation
 - ADA compliant lever handle
 - Flexible connections for easy installation
 - Three-function sprayhead with spray, aerated stream, and pause settings
 - 360° spout rotation
 - Available with 8" (20.3 cm) or 6" (15.2 cm) swing spout reach
 - For single-hole or three-hole installation when included 10-1/2" (26.7 cm) escutcheon plate is used
 - 2.2 gallons (8.3 L) per minute maximum flow rate



- Codes/Standards Applicable**
- Specified model meets or exceeds the following at date of manufacture:
- ADA
 - ASME A112.18.1/CSA B125.1
 - ICC/ANSI A117.1
 - Energy Policy Act of 1992
 - NSF/ETL
 - All applicable US Federal and State material regulations

- Colors/Finishes**
- CP: Polished Chrome
 - VS: Stainless Steel

Specified Model

Model	Description	Colors/Finishes
K-596	Pull-down kitchen sink faucet - 8" (20.3 cm) swing spout reach (shown)	J CP J VS
K-597	Pull-down kitchen sink faucet - 6" (15.2 cm) swing spout reach	J CP J VS

NOTE: ADD 1.7GPM LOW FLOW AREATOR NO 1082533

Product Specification

The pull-down kitchen sink faucet with transitional styling shall be of metal construction. Product shall feature a 2.2 gallon (8.3 L) per minute maximum flow rate. Product shall feature a one-piece, self-contained ceramic disc valve, which allows both volume and temperature control. Product shall feature temperature memory, allowing the faucet to be turned on and off at any temperature setting. Product shall feature a touch control for stream-to-spray water flow and Promotions technology with nylon hose and ball joint for easy operation. Product shall feature an ADA compliant lever handle, 360° spout rotation, and flexible connections for easy installation. Product shall be available with a 3" (76.2 mm) or 4" (101.6 mm) swing spout reach. Product shall feature a three-function sprayhead with spray, aerated stream, and pause settings. Product shall be for single-hole or three-hole installation when included 10-1/2" (26.7 cm) escutcheon plate is used. Pull-down kitchen sink faucet shall be Kohler Model K-596.

KF2
Not in Node



Four-Bedroom Duplex (Warm Palette)
Scale 1:100

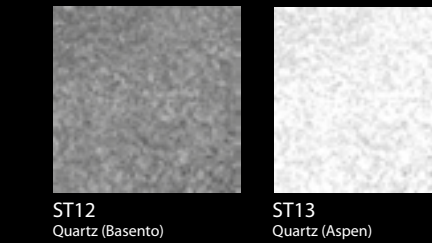
CABINETS



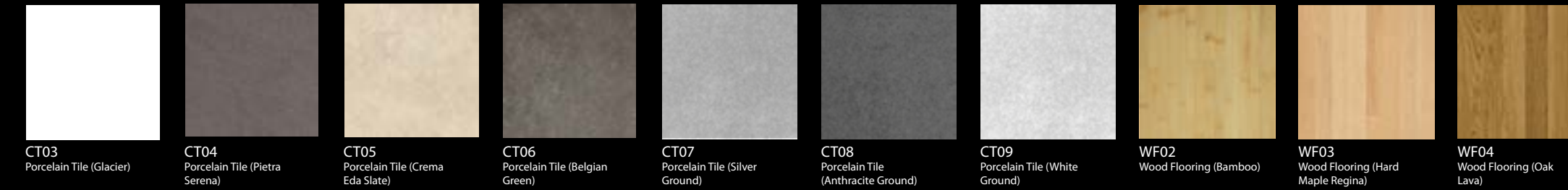
CEILING



COUNTERTOPS



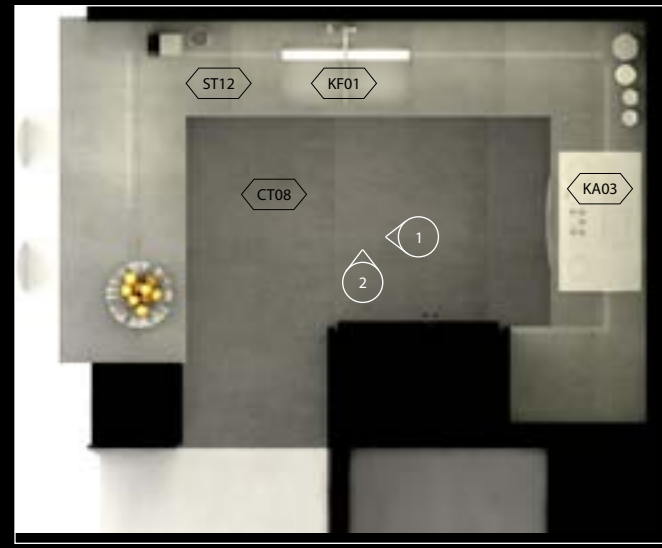
FLOORS



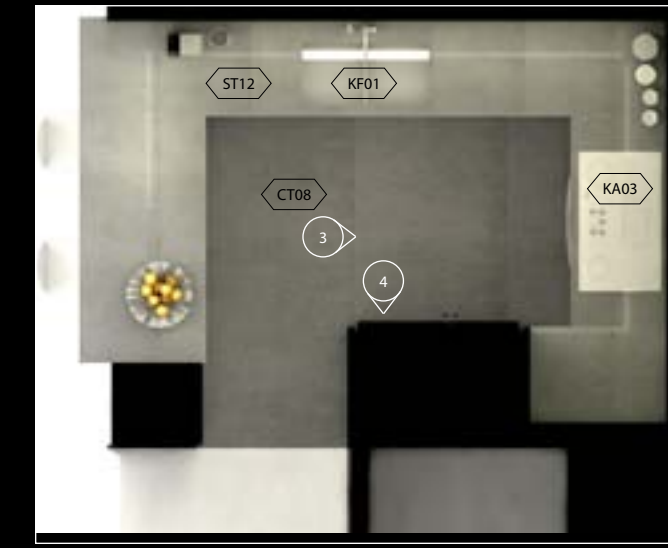
WALLS AND ACCENT WALLS



Finish Schedule



Plan
Scale 1:50



Plan
Scale 1:50



Interior Elevation 1
Scale 1:20



Interior Elevation 2
Scale 1:20



Interior Elevation 3
Scale 1:20

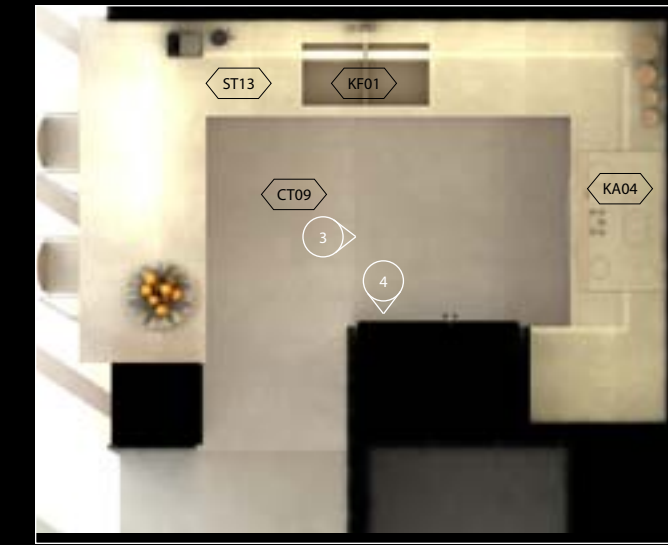


Interior Elevation 4
Scale 1:20

Kitchen (Cool Palette)



Plan
Scale 1:50



Plan
Scale 1:50



Interior Elevation 1
Scale 1:20



Interior Elevation 2
Scale 1:20



Interior Elevation 3
Scale 1:20

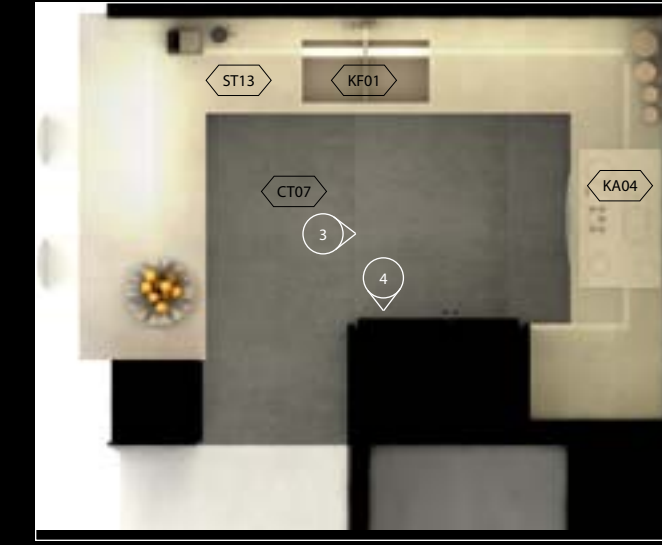


Interior Elevation 4
Scale 1:20

Kitchen (Warm Palette)



Plan
Scale 1:50



Plan
Scale 1:50



Interior Elevation 1
Scale 1:20



Interior Elevation 2
Scale 1:20



Interior Elevation 3
Scale 1:20



Interior Elevation 4
Scale 1:20

Kitchen (Two-Toned Palette)



OVEN (KA01)
Miele, H5461 (White/Black)



COOKTOP (KA02, KA03, KA04, KA05)
Miele, KM6383 and similar



MICROWAVE (KA06)
Miele, M8261-2 Oven



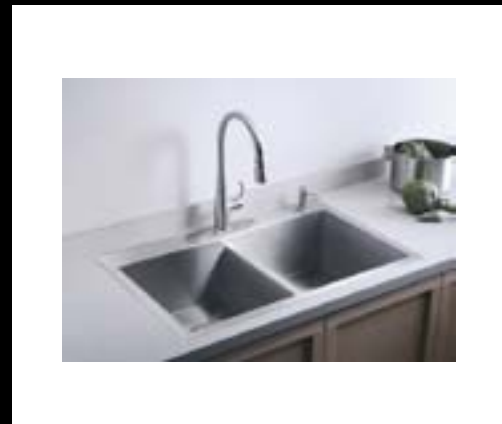
HOOD (KA07)
Miele, DA3160



DISHWASHER (KA08)
Miele, G5170



REFRIGERATOR/FREEZER (KA09, KA10)
Miele, BI-365 and BI-425

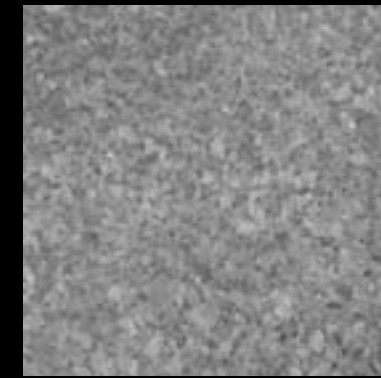


SINK (KF01)
Kohler, Vault series, K3820 Undermount



FAUCET (KF02)
Kohler, Simplice series, K-596
Polished chrome

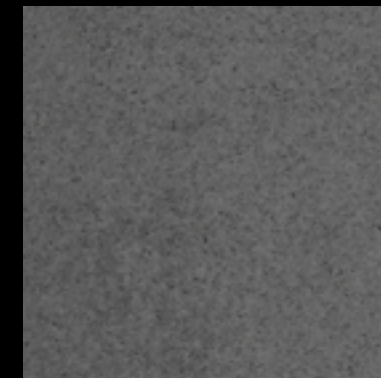
COOL PALETTE



COUNTERTOP (ST12)
Quartz
HanStone Basento Ruscello RU604

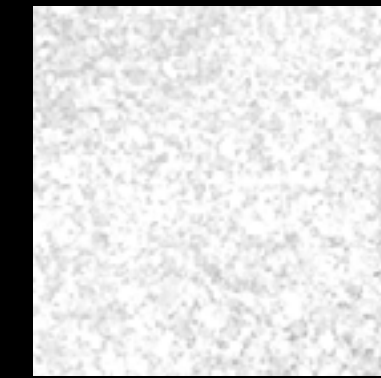


CABINETS (MDF01)
Medium-Density Fiberboard
Lacquer-finish white



FLOOR (CT08)
Porcelain Tile
Fiandre New Ground Anthracite Ground

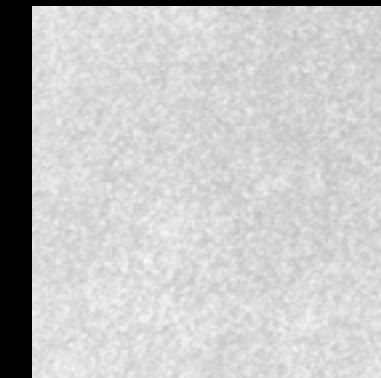
WARM PALETTE



COUNTERTOP (ST13)
Quartz
HanStone Aspen Ruscello RU601

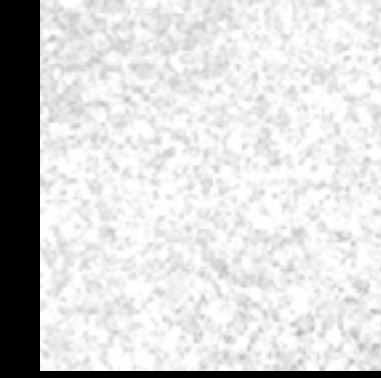


CABINETS (WDP02)
Wood Veneer, Quarter Cut
Afromosia, Clear Conversion Varnish

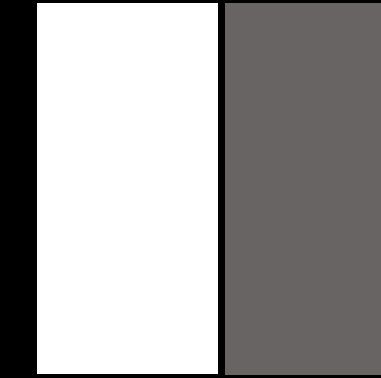


FLOOR (CT09)
Porcelain Tile
Fiandre New Ground White Ground

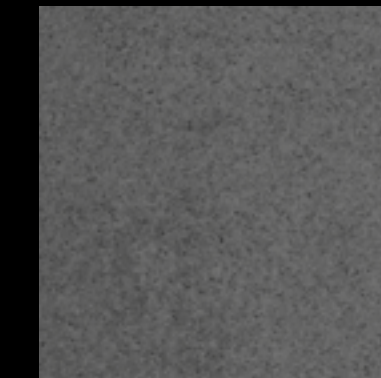
TWO-TONED PALETTE



COUNTERTOP (ST13)
Quartz
HanStone Aspen Ruscello RU601



CABINETS (MDF01, MDF02)
Medium-Density Fiberboard
Lacquer-finish white, dark gray

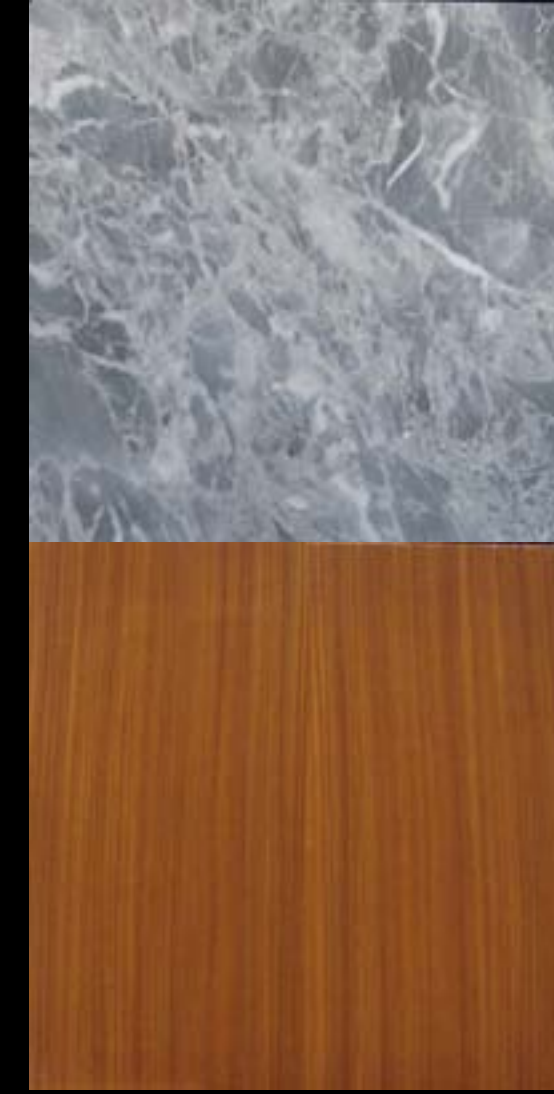


FLOOR (CT08)
Porcelain Tile
Fiandre New Ground Anthracite Ground



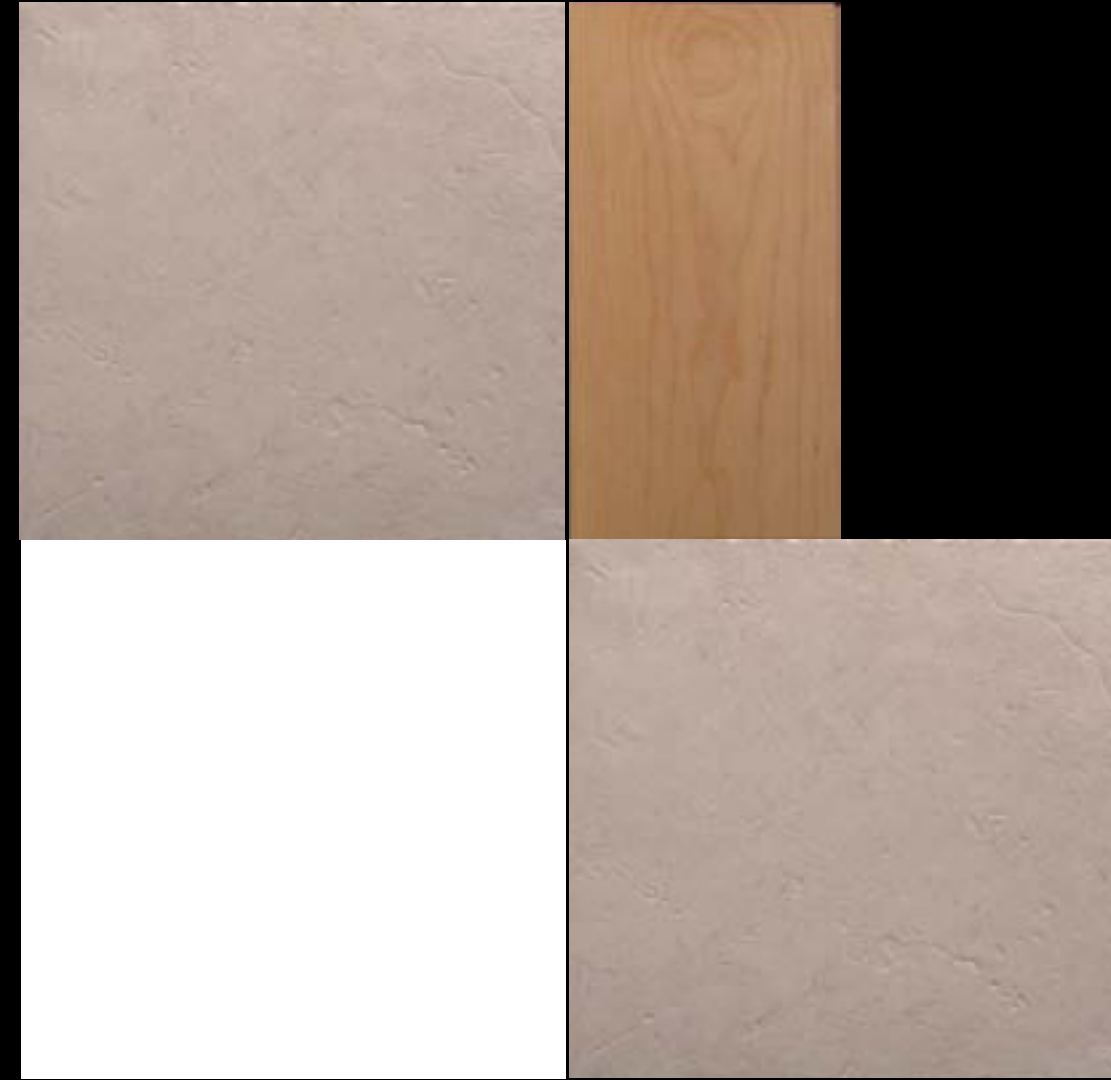
Standard Bathroom (Two-Toned Palette) Material Palette

<p>Walls, Floors, and Counters Porcelain Tile Anthracite Ground</p>	<p>Walls, Floors, and Counters Porcelain Tile Silver Ground</p>
<p>Cabinet Doors and Door Wood Veneer Panel Afromosia, Quartered</p>	



Powder Room (Cool Palette) Material Palette

<p>Walls and Floors Marble Bardiglio Nuvorato</p>
<p>Door Wood Veneer Panel Afromosia, Quartered</p>



<p>Floors (Living Room/Dining Area) Porcelain Tile Crema Eda Slate</p>	<p>Floors (Bedroom) Wood Flooring Hard Maple Regina</p>
<p>Walls and Ceiling Painted GWB White</p>	<p>Private Terrace Porcelain Tile Crema Eda Slate</p>



<p>Floors (Living Room/Dining Area) Porcelain Tile Pietra Serena</p>	<p>Floors (Bedroom) Wood Flooring Bamboo</p>
<p>Walls and Ceiling Painted GWB White</p>	<p>Private Terrace Porcelain Tile Argento</p>

Living Spaces/Bedroom (Warm Palette) Material Palette

Living Spaces/Bedroom (Two-Toned Palette) Material Palette



Event Room/Media Room Material Palette

<p>Event Room Walls Porcelain Tile Pietra Serena</p>	<p>Floors Wood Flooring Oak Lava</p>
<p>Media Room Walls Wood Veneer Panel Afromosia, Quartered</p>	



Exterior Wall and Plaza Material Palette

<p>Exterior Glass</p>	<p>Exterior Wall Limestone Riyadh White, Bush Hammered</p>	
<p>Cable Net Wall Stainless Steel Bronze Hairline Colored</p>	<p>Mullions Painted Aluminum Bronze</p>	<p>Sunshading Fins Painted Aluminum Milk White</p>
<p>Exterior Plaza Paving Limestone Misty Blue, Sandblasted</p>		<p>Exterior Plaza Paving Limestone Riyadh White, Sandblasted</p>