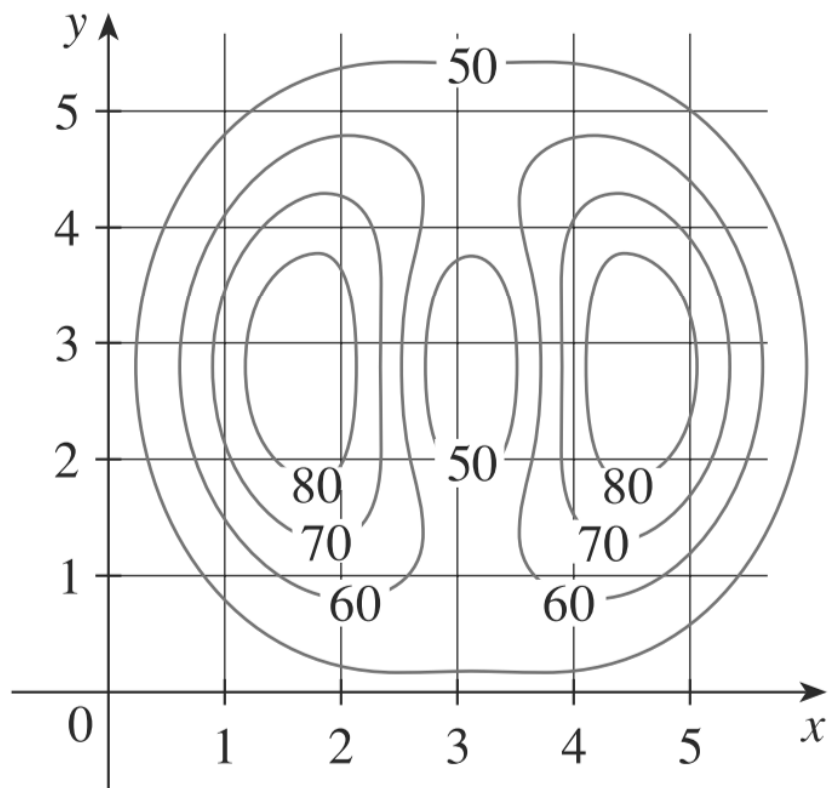
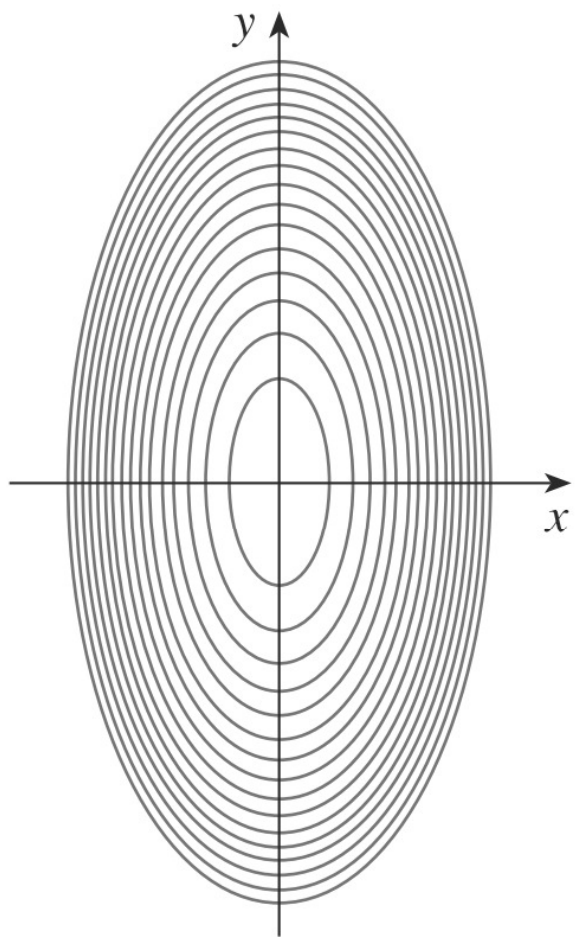
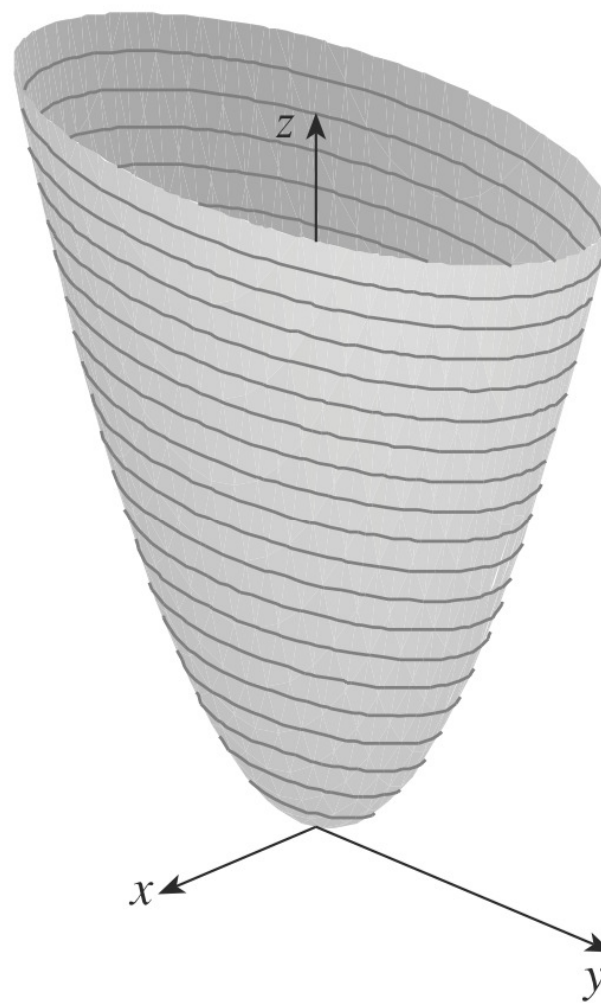


**EXAMPLE** A contour map for a function  $f$  is shown. Use it to estimate the values of  $f(1, 3)$  and  $f(4, 5)$ .

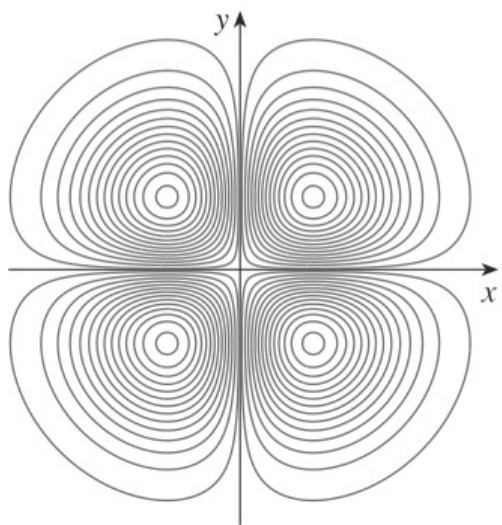




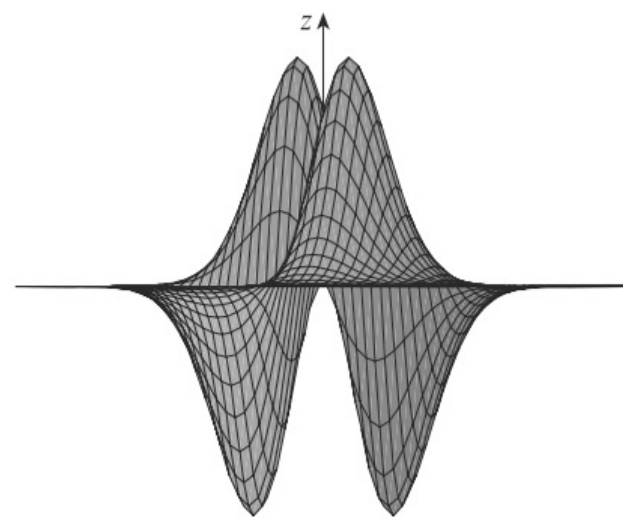
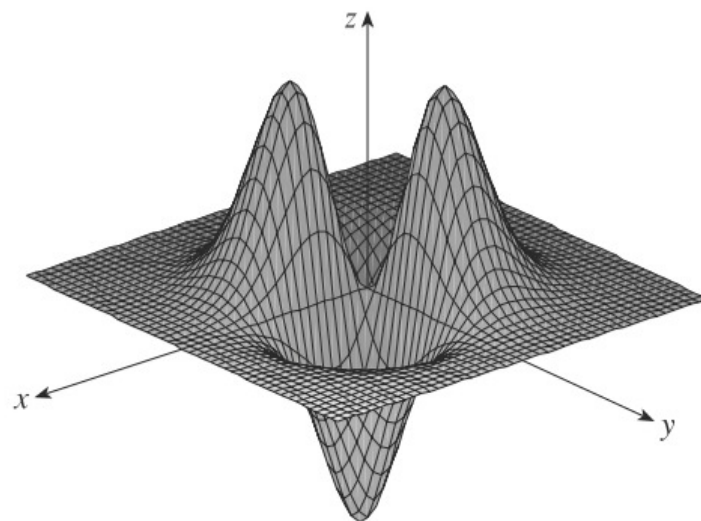
(a) Contour map



(b) Horizontal traces are raised level curves



(a) Level curves of  $f(x, y) = -xye^{-x^2-y^2}$



(b) Two views of  $f(x, y) = -xye^{-x^2-y^2}$