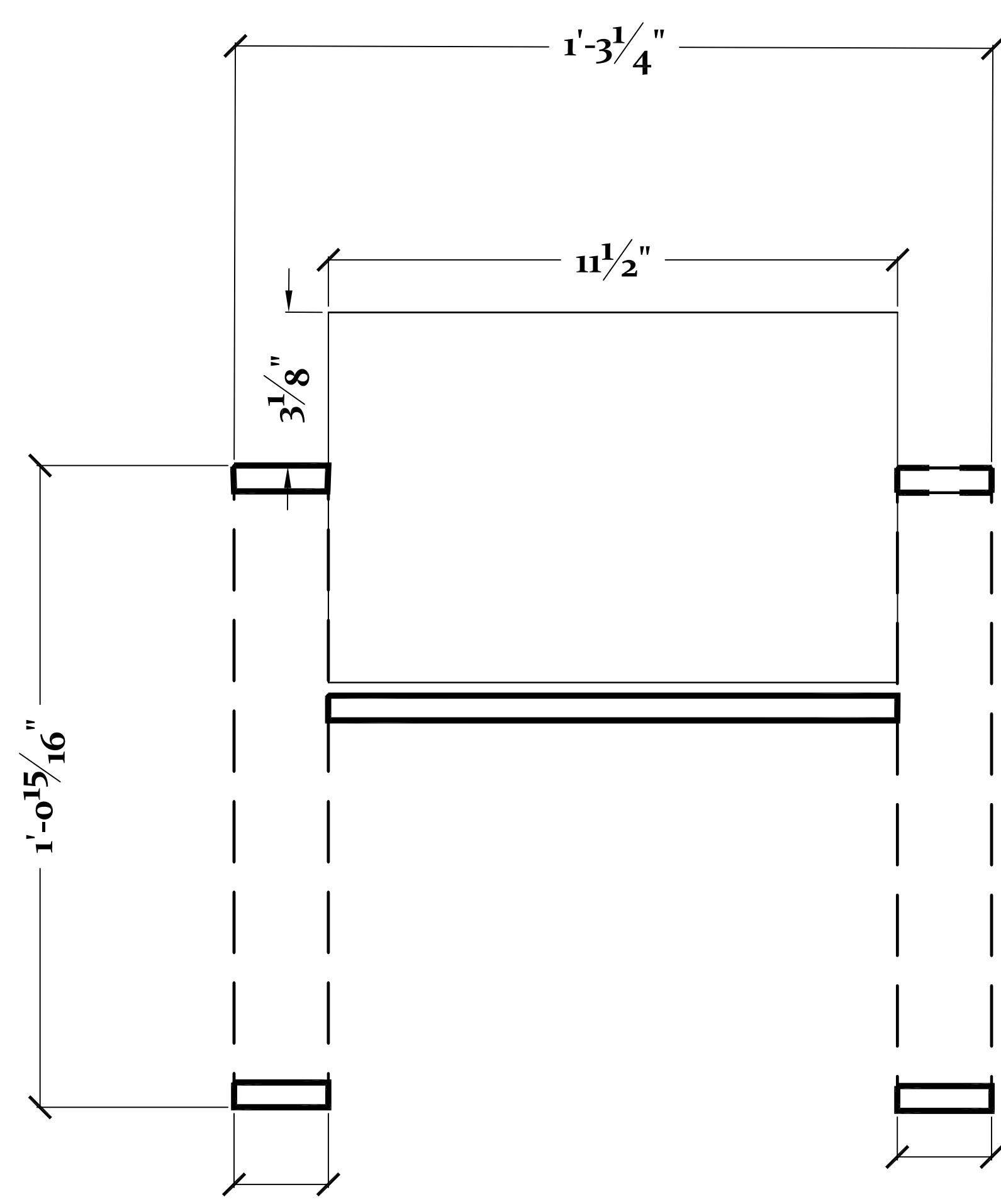
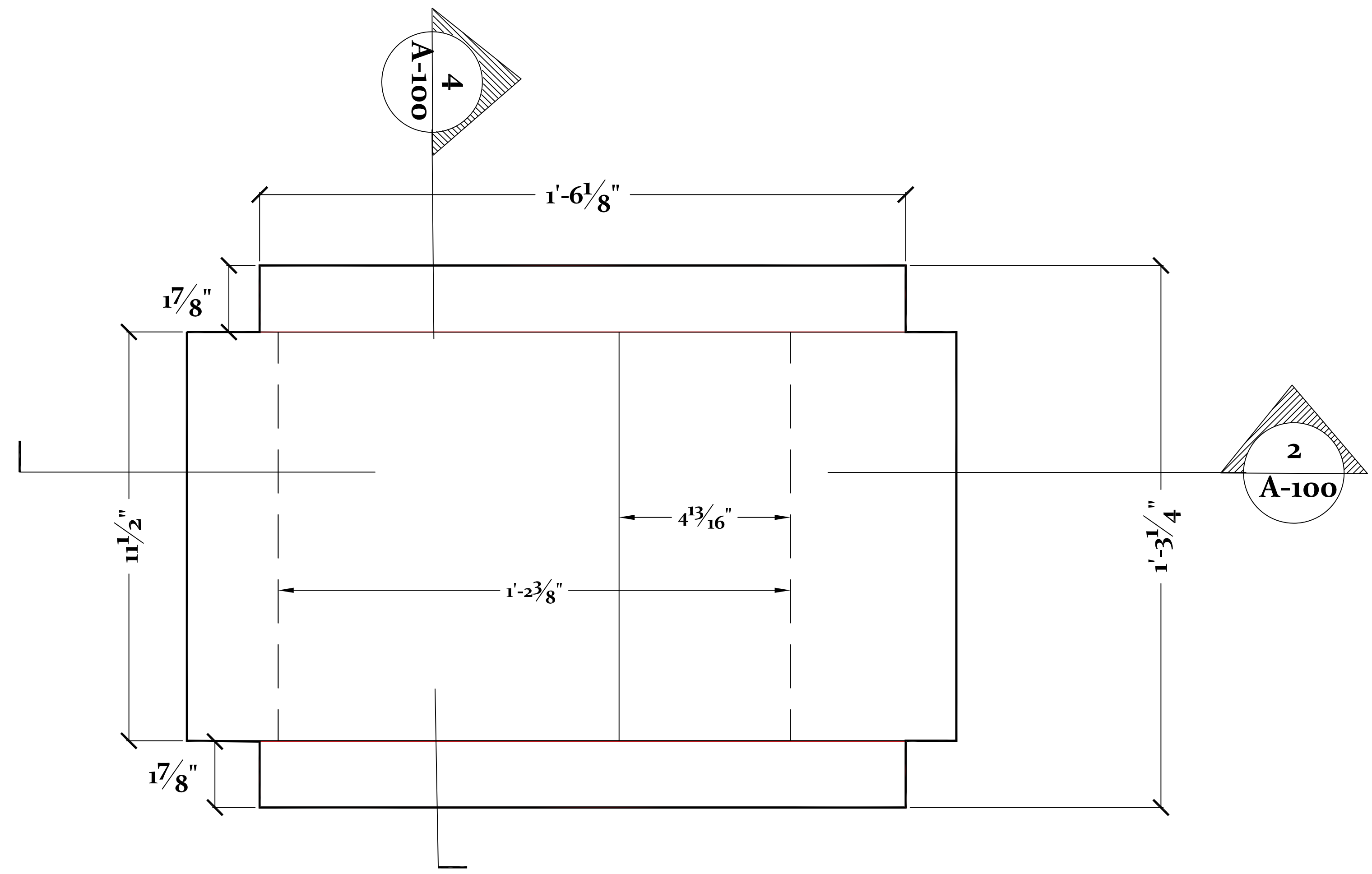




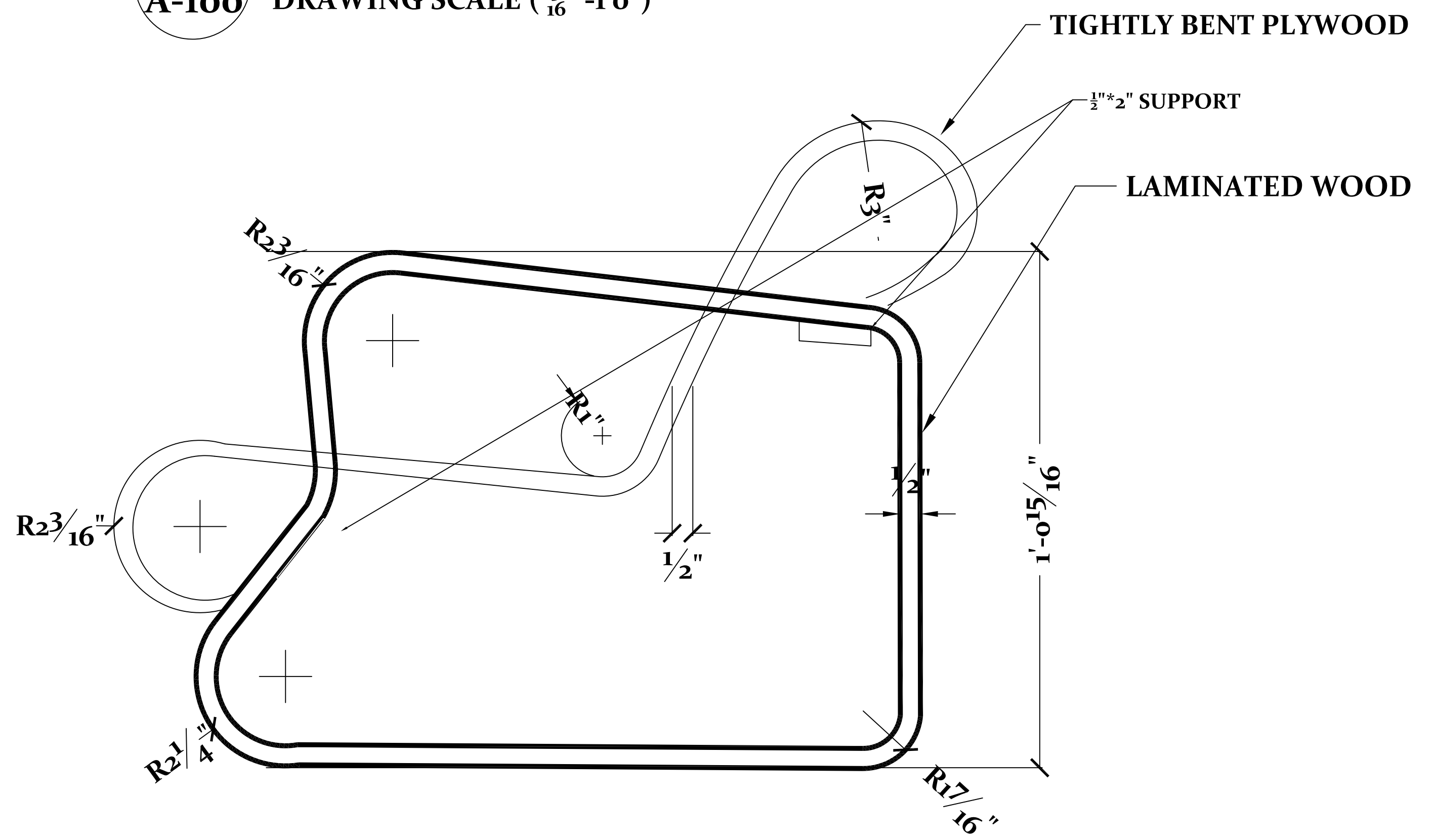
**3 PERSPECTIVE VIEW**  
**A-100** DRAWING SCALE ( $\frac{3}{16}$ " - 1'0")



**4 SECTION VIEW**  
**A-100** DRAWING SCALE ( $\frac{3}{16}$ " - 1'0")

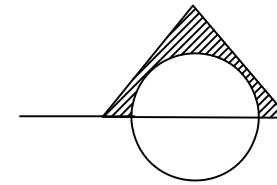
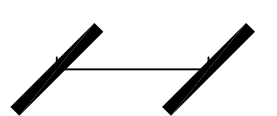


**1 PLAN VIEW**  
**A-100** DRAWING SCALE ( $\frac{3}{16}$ " - 1'0")



**2 SECTION**  
**A-100** DRAWING SCALE ( $\frac{3}{16}$ " - 1'0")

**LEGEND**

-  SECTION
-  DIMENTION MEASUREMENTS

**PROJECT SUMMARY**

THE PAIMIO LOUNGE CHAIR WAS MADE BY Alvar Aalto IN THE YEARS 1931-1932. ALVAR IDEA PLAN WAS TO MAKE A CHAIR MADE OUT OF NATURAL MATERIAL SO HE USED BIRCH WOOD. ALVAR WAS INFLUENCED BY MARCEL BREUER'S WASSILI CHAIR WHICH WAS MADE OUT OF TUBBULAR STEEL MADE IN 1927-28. WOOD IS BEND IN A SCROLL STYLE FORM.

PROJECT:  
**ARCH 1230**  
 CITYTECH / INSTRUCTOR T.WU / 2015 FALL

DWG TITLE: Alvar Aalto Paimio Lounge Chair

SEAL & SIGNATURE	DATE: September 9, 2015
	PROJECT NO. Assignment #1 Alvar Aalto Paimio Lounge Chair
	DRAWING BY: Moises De La Cruz
	CHK BY: INSTRUCTOR T. WU
	DWG NO : 1
CADD FILE NO: 1	PAGE: 1