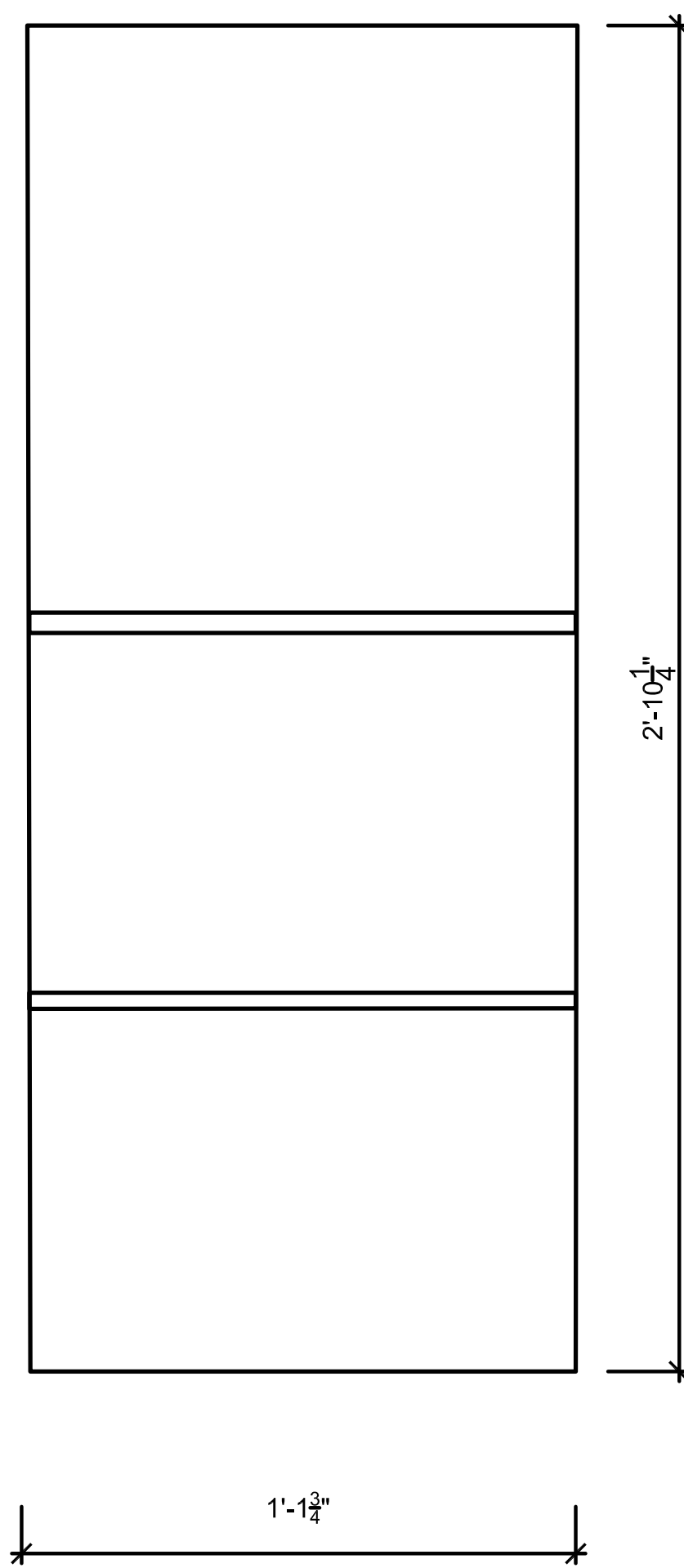


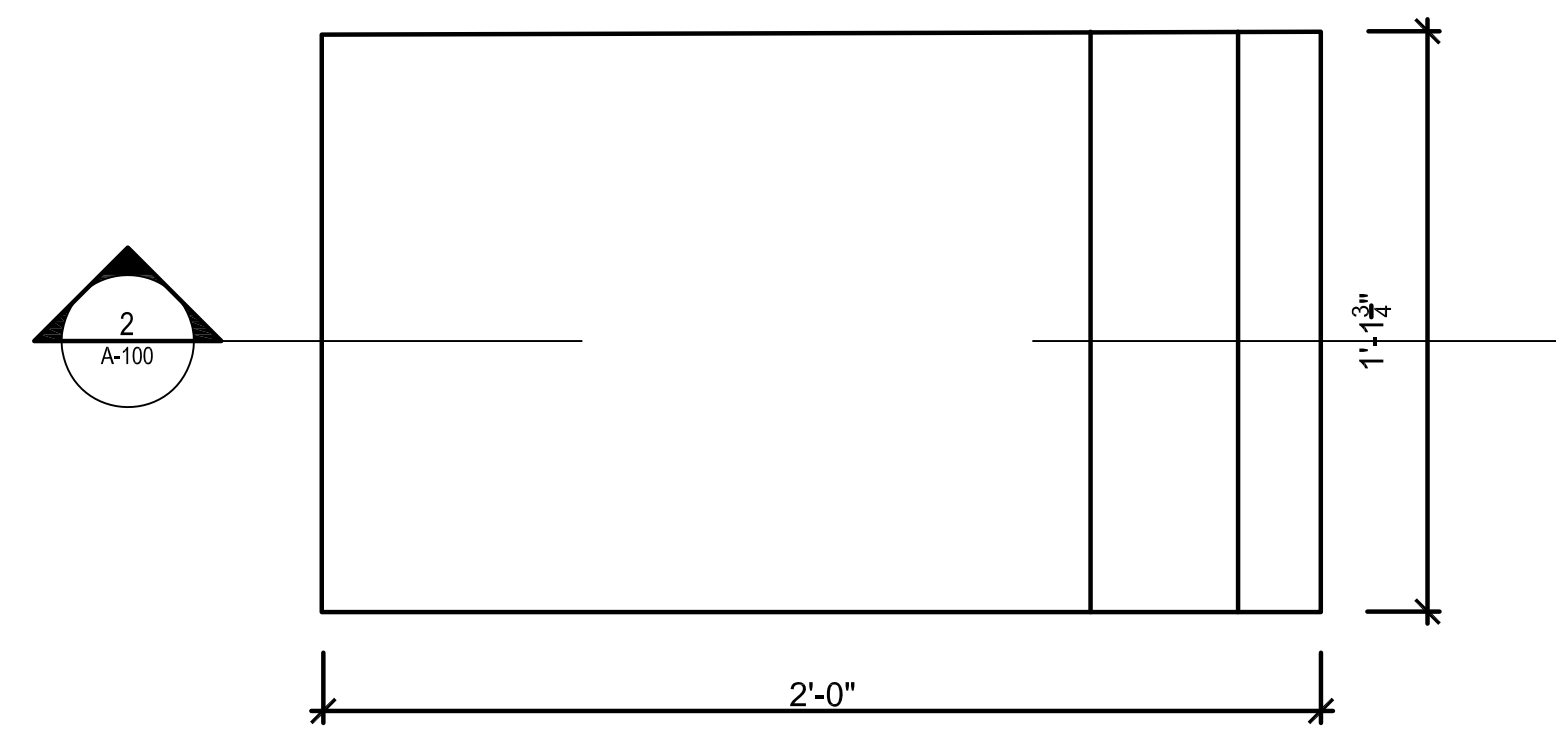
4  
A-100.00

RENDER  
Not to scale



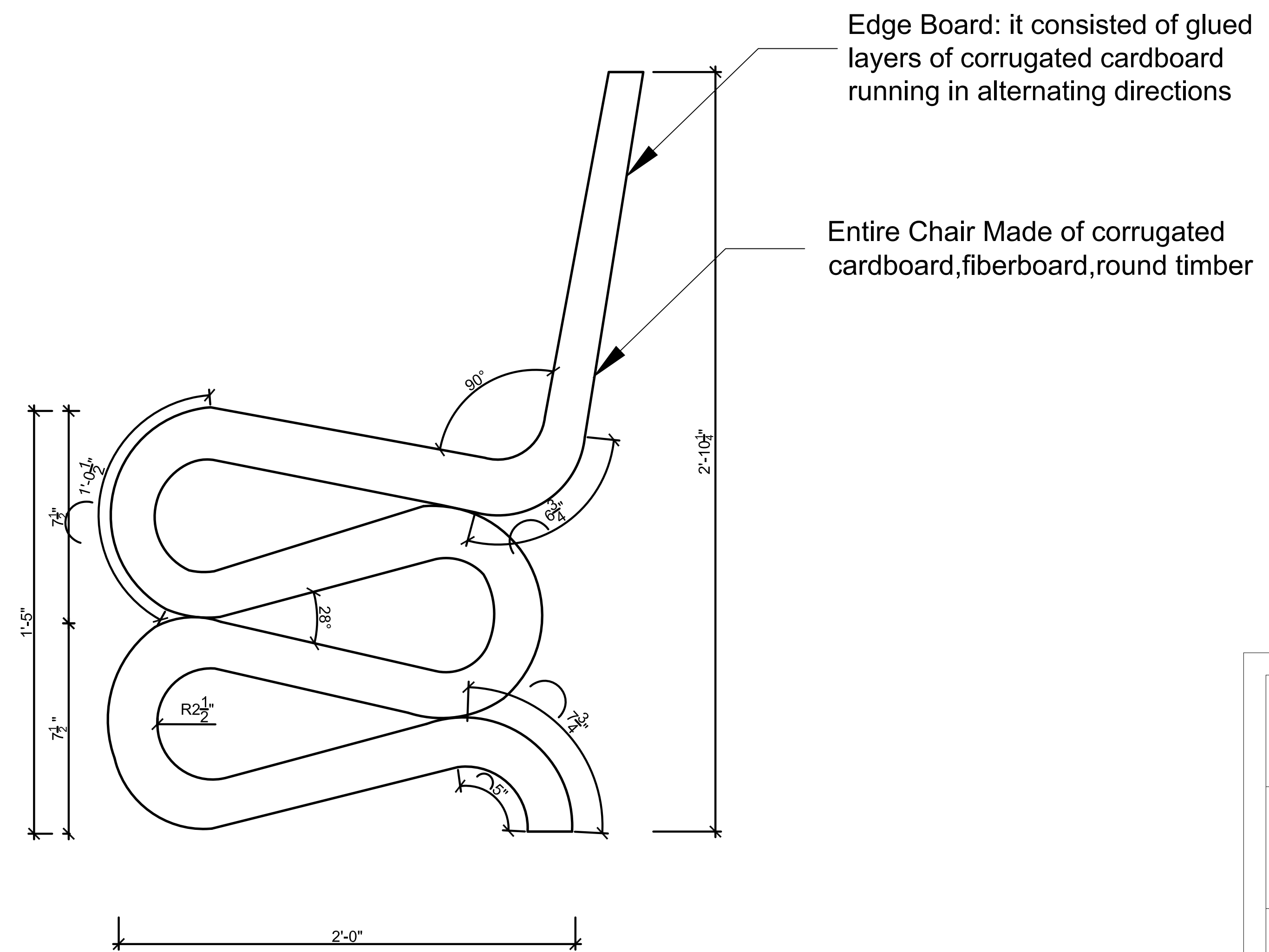
3  
A-100.00

BACK ELEVATION  
1'-0"=1'-0"



1  
A-100.00

PLAN  
1'-0"=1'-0"



2  
A-100.00

SECTION  
1'-0"=1'-0"

### Project Description

This is the Wiggly Side Chair, cardboard, designed by the Canadian architect Frank Gehry, United States, 1972. "One day I saw a pile of corrugated cardboard outside of my office - the material which I prefer for building architecture models - and I began to play with it, to glue it together and to cut it into shapes with a hand saw and a pocket knife." According to the Vitra Design Museum Gehry discovered a process that gave cardboard furniture-making a new burst of popularity. Gehry's furniture, like his architecture, is characterized by its abstract, sculptural qualities.

PROJECT: <b>ARCH 1230</b> CITYTECH / INSTRUCTOR T.WU / 2015 FALL	
DWG TITLE: <b>ASSIGNMENT A</b> <b>FRANK GEHRY WIGGLE CHAIR</b>	
SEAL & SIGNATURE	DATE: 2015 09 11 PROJECT NO: 1230_A DRAWING BY: FATIMA DABO CHK BY: T.W DWG NO: <b>A-100.00</b>
CADD FILE NO: arch1230_wu_0911_fm_dabo_fatima_assign_A_01	PAGE: <b>1 of 1</b>