

SUBJECT

Building Technology II

Assignment A_Site+Grid+Plan

DATE

FALL 2012

PROFESSOR

Friedman

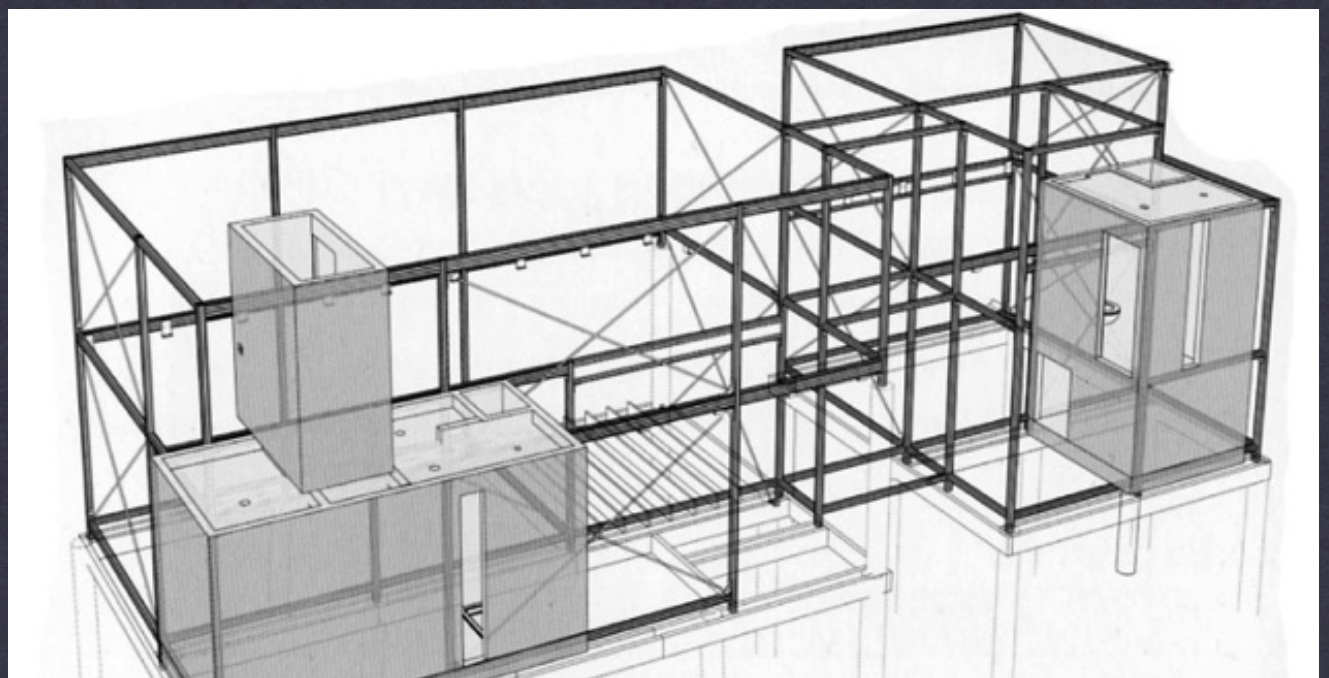
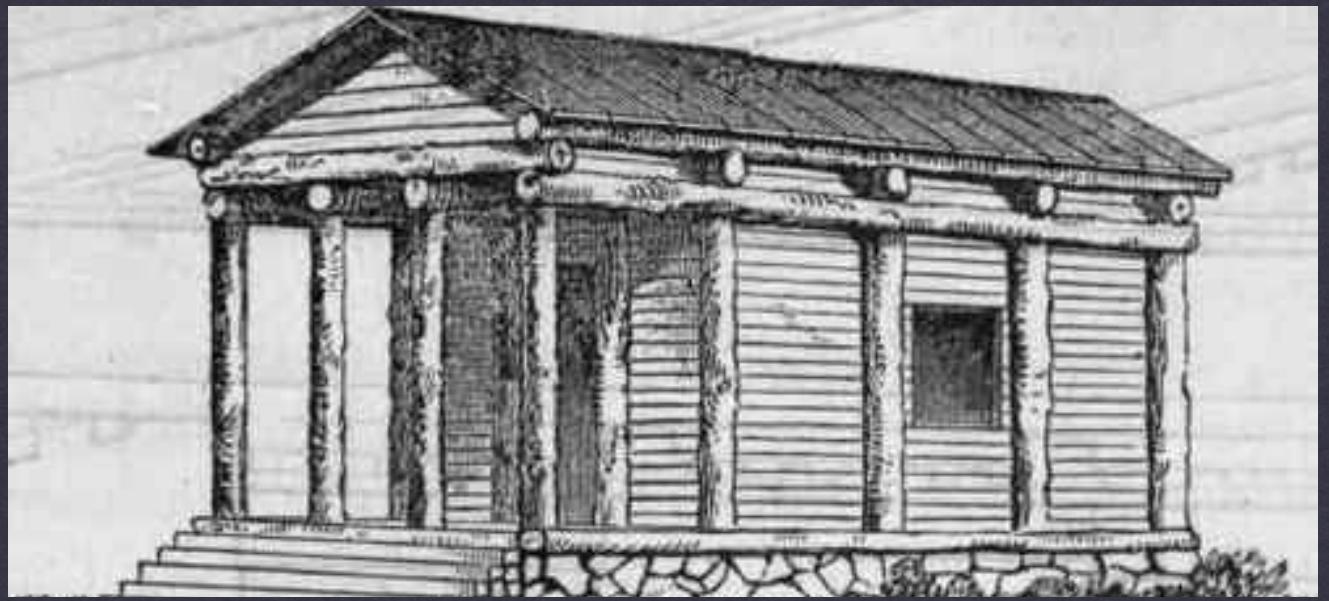
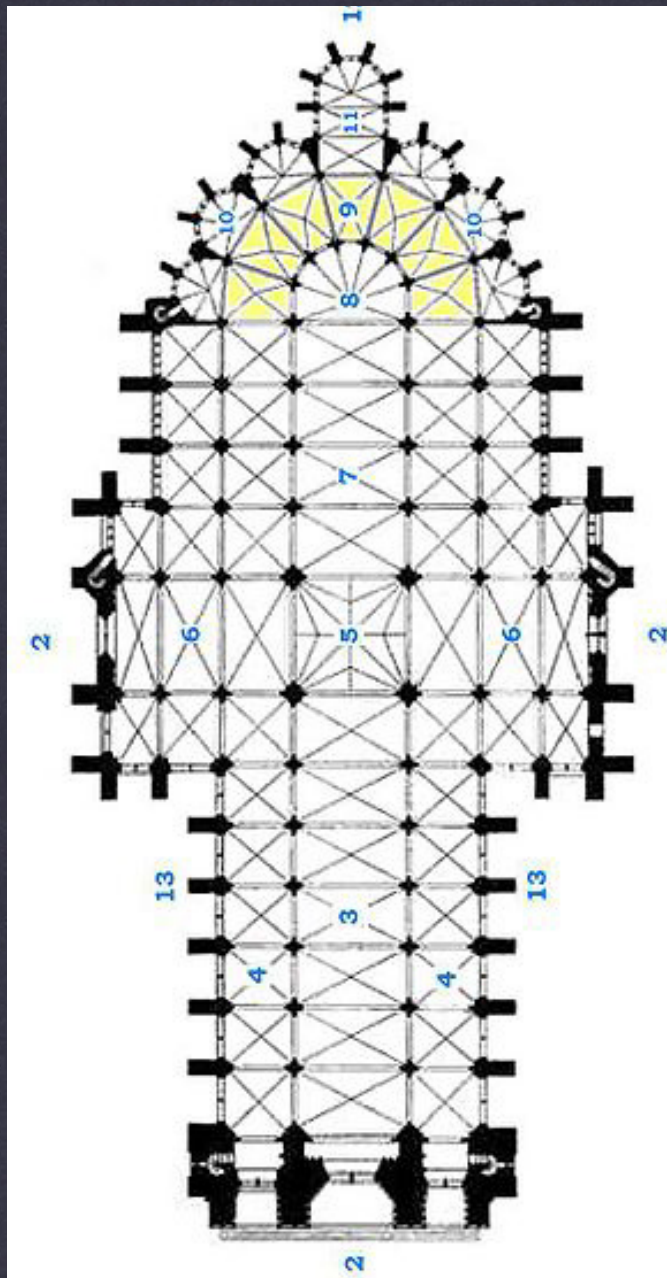


POWERS OF TEN

Professor Friedman

the site

arch 1230



ORGANIZING SPACE

Professor Friedman

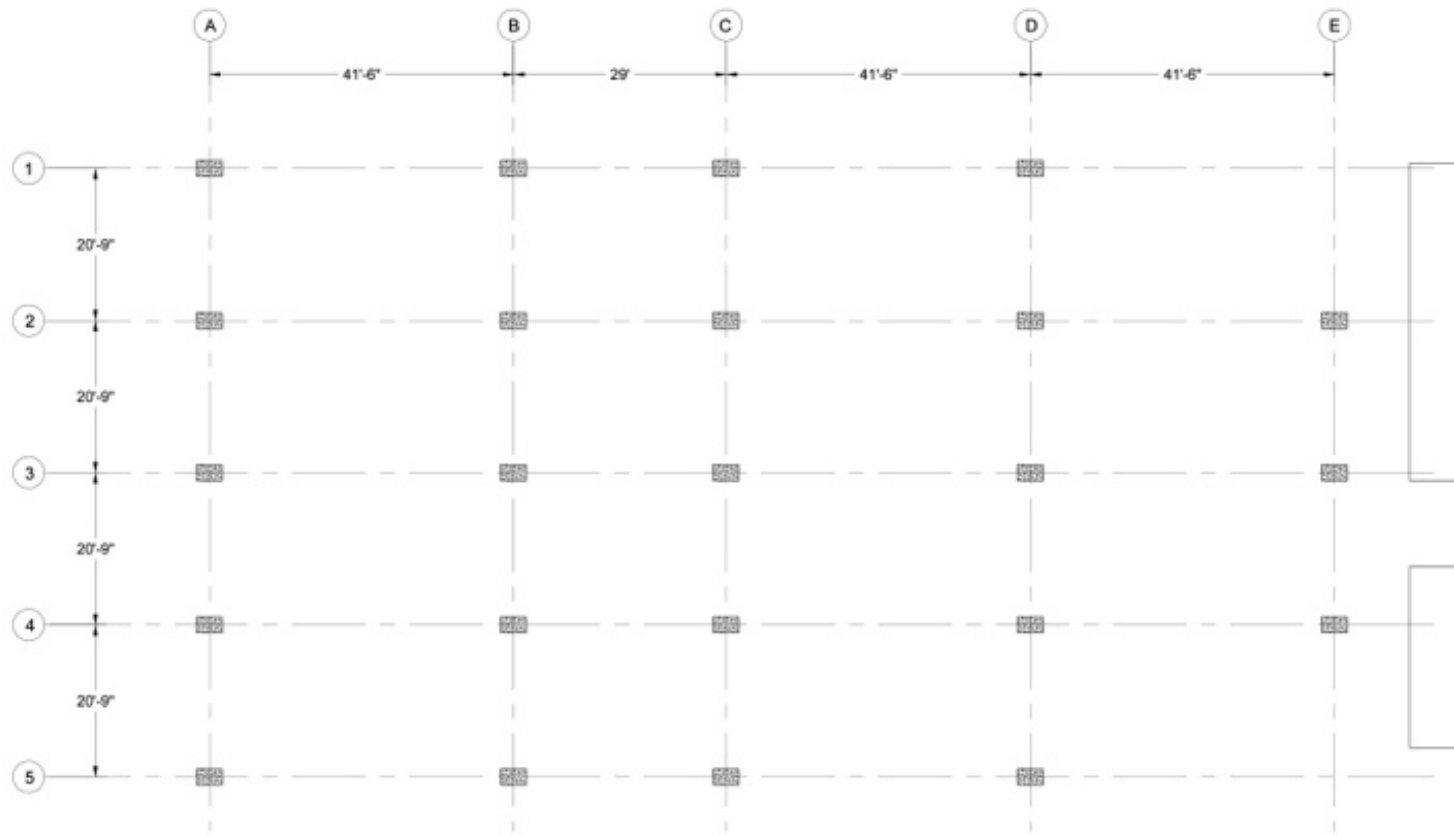
the grid
arch 1230



STRUCTURAL ORDER

Professor Friedman

the grid
arch 1230



YALE ART GALLERY THIRD FLOOR PLAN

ABSTRACT ORDER

Professor Friedman

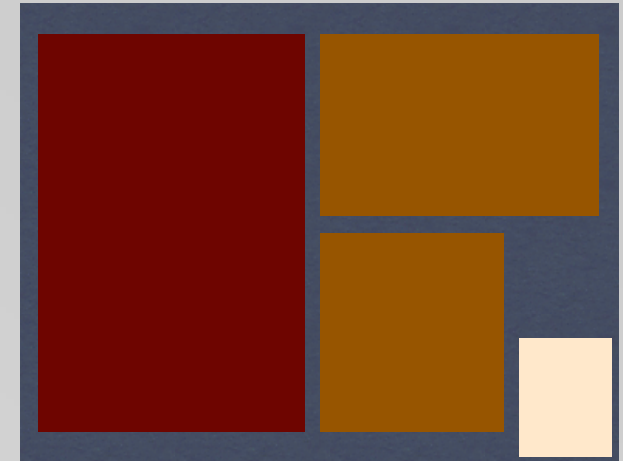
the grid
arch 1230

Assignment A

CASE STUDY #1 SITE+GRID+PLAN

DUE: SEPT 14, 2012

- * 3 boards required:
 - i. Site Maps (3 scales)
 - ii. Structural Grid @ $3/16''=1'-0''$
 - iii. Third Floor Plan @ $3/16''=1'-0''$
- * All views must have a north arrow
- * One graphic scale must be included for each unique scale
- * Site maps to include the following:
 - i. Scale
 - ii. Altitude
 - iii. Latitude and Longitude Coordinates of Case Study Building
 - iv. Case Study Building Outlined/Highlighted



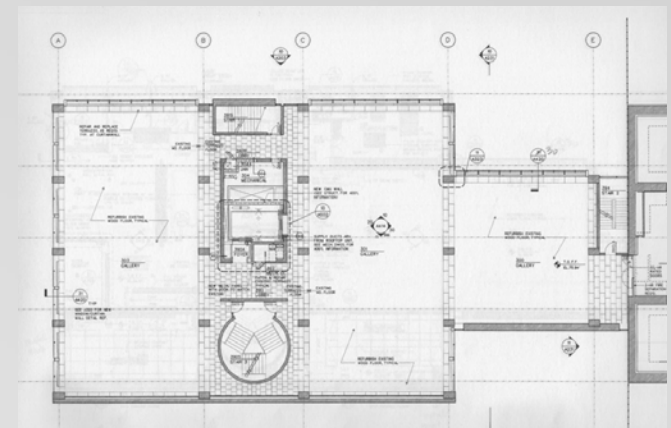
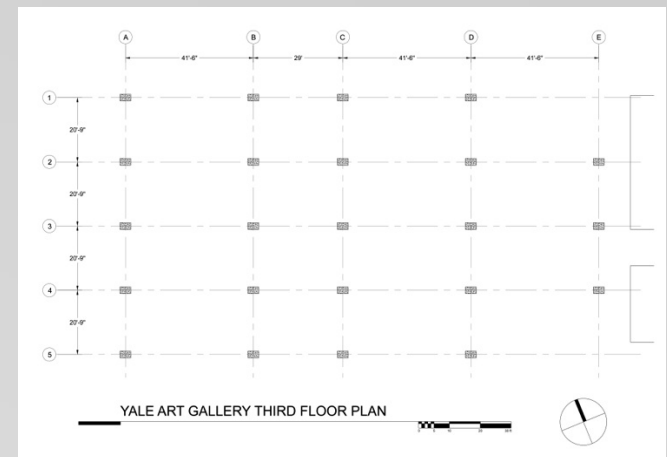
assignment A

CASE STUDY #1 SITE+GRID+PLAN

DUE: SEPT 14, 2012

- * 24" x 36" title block that follows studio standards
- * emphasis on quality of draftsmanship including:
 - * layer management
 - * line weights
 - * grid dimensions
 - * standard notations (doors, elevators, stairs_refer to Arch Graphic Standards)
- * column size: 26" x 42"
- * submit PDFs and Zip files with all x-refs and rasters included.

- Professor Friedman



arch 1230