

Zehra Ahmad

ARTH 1204

Journal #1

MET MUSEUM EXHIBITION: Impression, Fashion, and Modernity

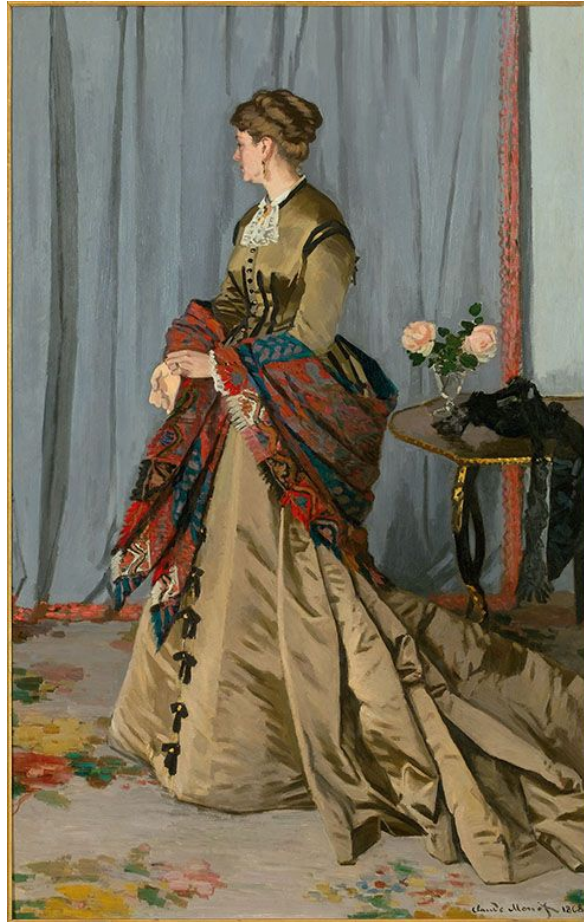


Figure 1 - Madame Louis Joachim Gaudibert, 1868 (MET, 2013)

In this image, Claude Monet captured this painting of Madame Louis Joachim Gaudibert. You see Madame Gaudibert in her elegant dress. It seems she is wearing a corset to show her hourglass figure. The corset gives a curvy silhouette that was very popular in the 1860s. The dress is long in length. These garments required a lot of fabric. The length of the fabric flowing down to the ground gives an emphasis on her height. It also shows how high in class she was as well. One can say under this garment, Madame Gaudibert is wearing a bustle. This allows the dress to not appear flat but full of volume towards the back area. Gaudibert is also holding a beautiful detailed scarf wrapped around her arms. The garment overall is one color and then the scarf is full of reds, blues, oranges, etc. It is full of detail which makes her garment stand out. Her garment really caught my eye with the choice of colors.

READING: V&A MUSEUM, “corsets and Bustles”

In this reading, It talks about the history of Corsets and Bustles in the 1880s were very popular. Every women had to own this object to display their curves. This made the growth of corsets to be expand rapidly. The corset makers tried to innovate their designs and use different textiles to offer more variety for women. The corset was really popular because it helped almost every body shape to achieve that curvy and slim figure that every woman desired to have at the time. Bustles helped give dresses not look flat but puffy around the bosom area. Bustles were usually for dresses ready for the ballroom. Bustles did not last long compared to corsets. Corsets eventually started changing in fabric and fit. Slowly, the interest of health and comfort changed corsets to what they are today. Today they are just seamless and more comfortable to wear compared to the 1880s.

References

Figure 1 - The Metropolitan Museum of Art. (2013). Claude Monet (French, 1840–1926), Madame Louis Joachim Gaudibert, 1868. Retrieved June 4, 2019, from <https://www.metmuseum.org/exhibitions/listings/2013/impressionism-fashion-modernity/images>