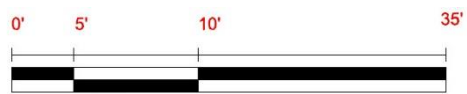
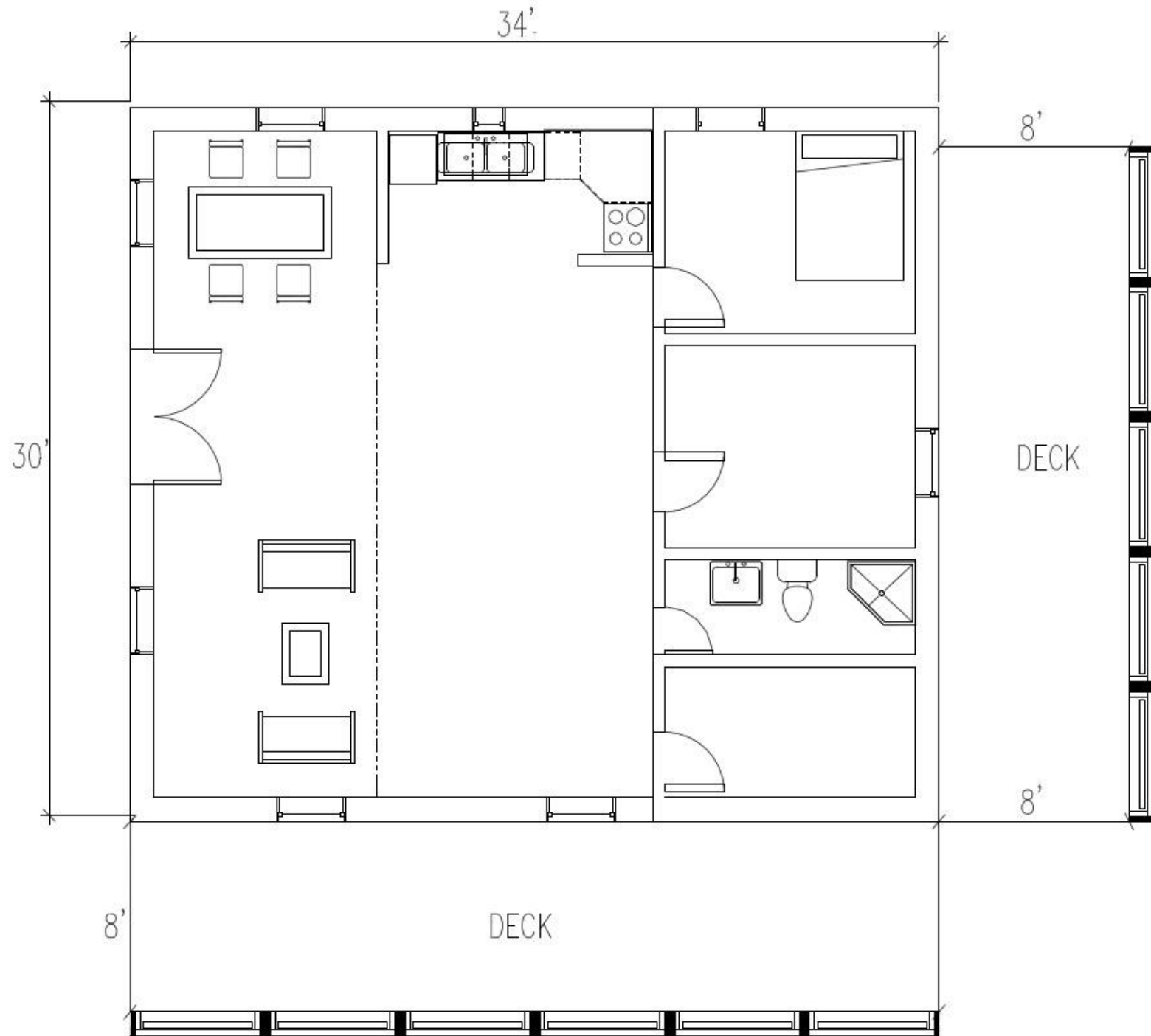


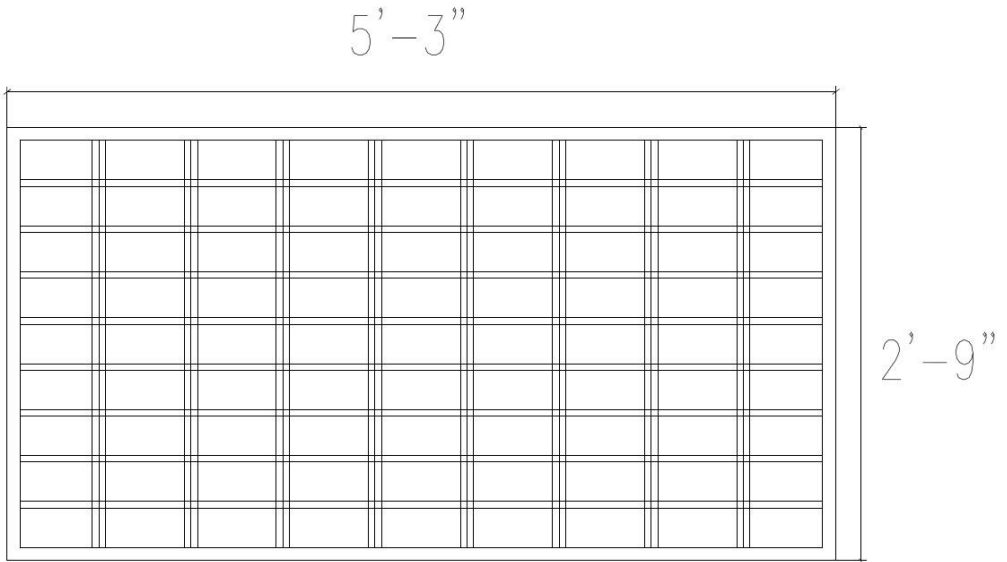
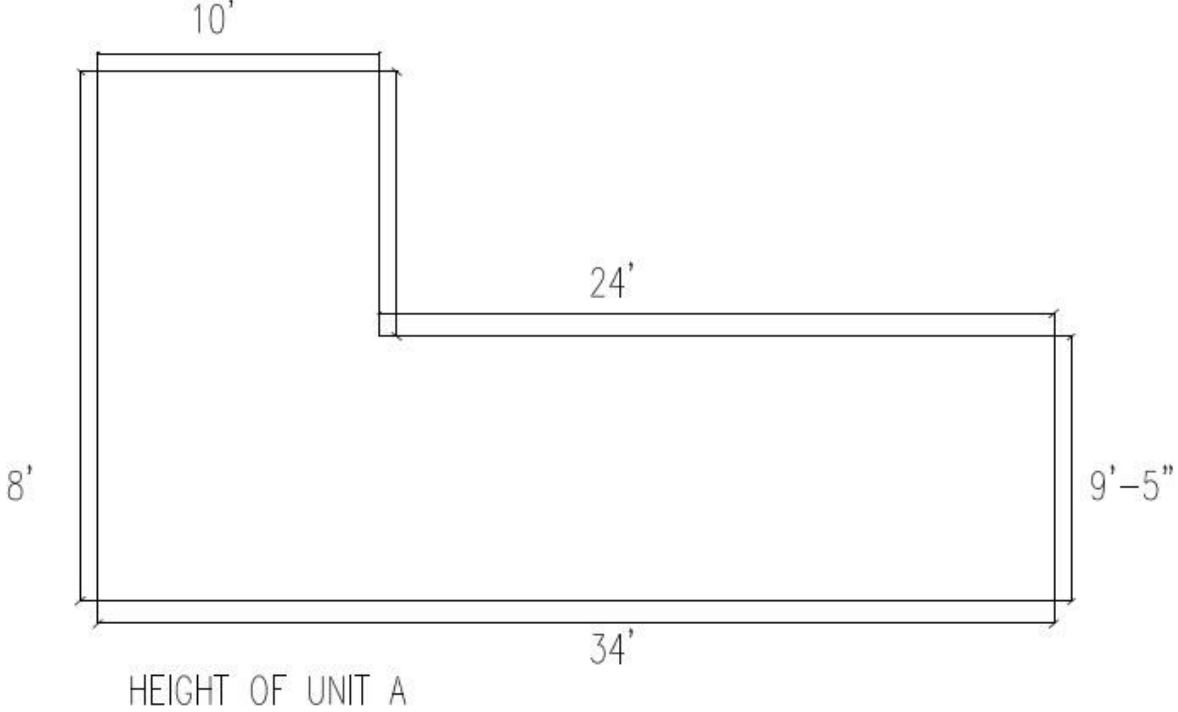


*ARCH 3610*  
*MIDREM SUBMITION*  
*PROFESSOR APTEKAR*  
*BY: ANZHELLA MESSIAN*

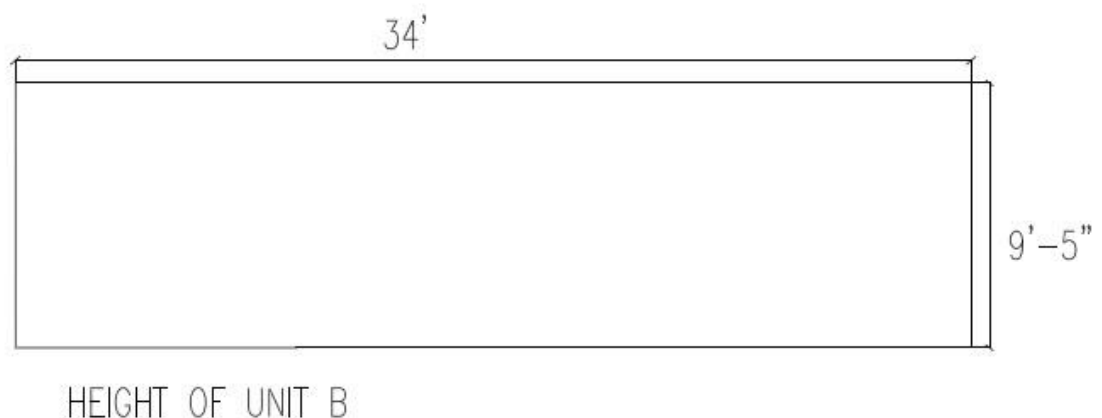
- FLOOR PLAN



# Solar Panel & Units Height

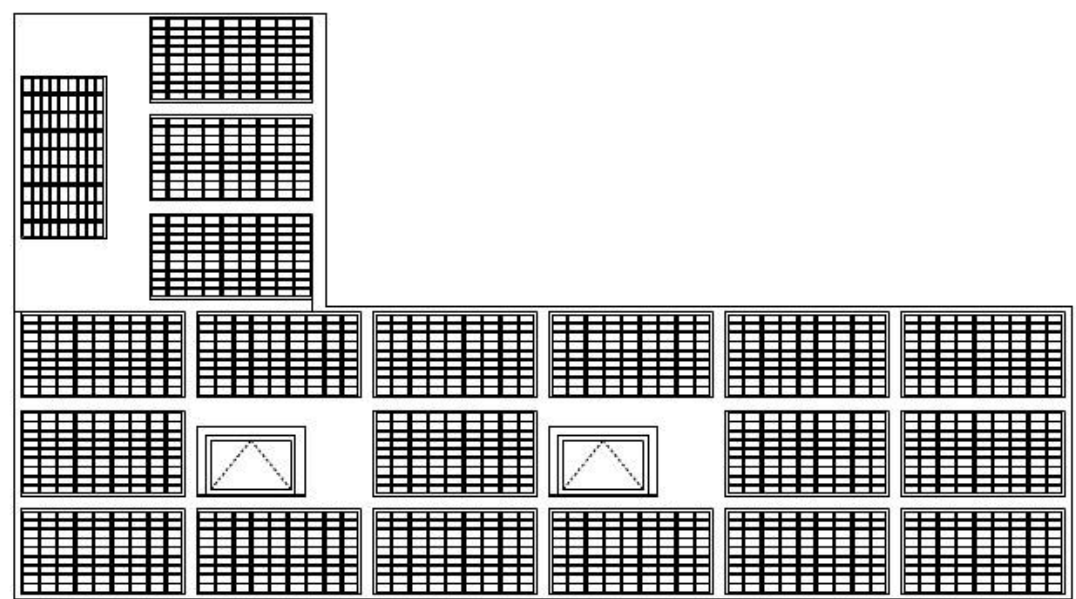
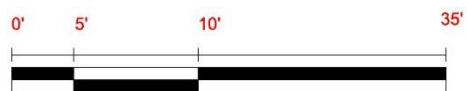


○ SOLAR PANEL

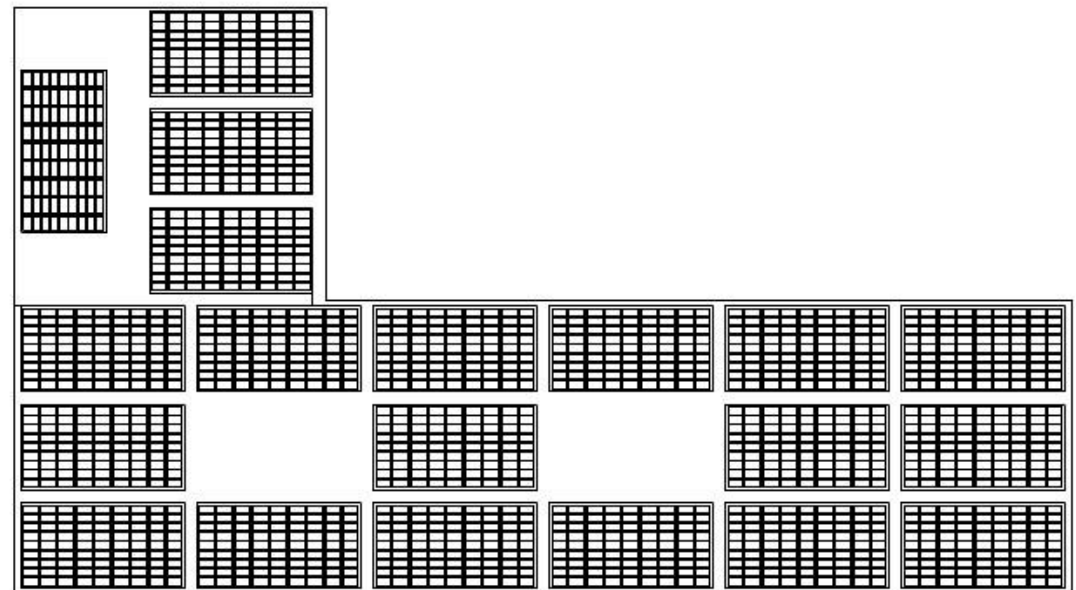


# *Elevation*

- UNIT A



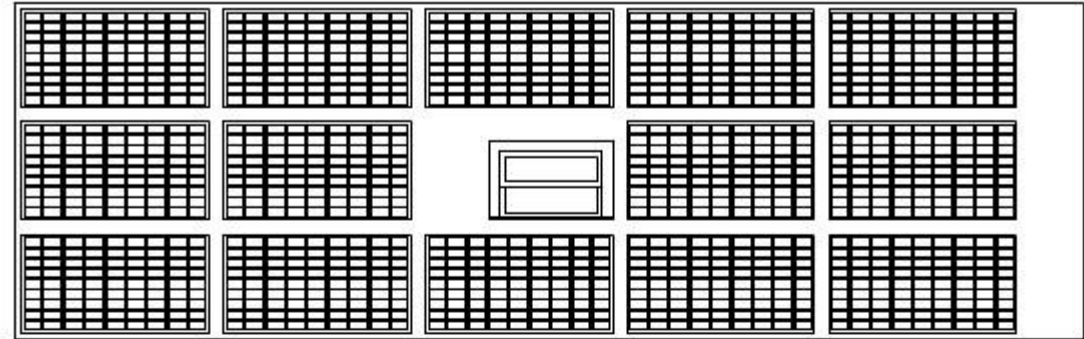
ELEVATION OF UNIT A



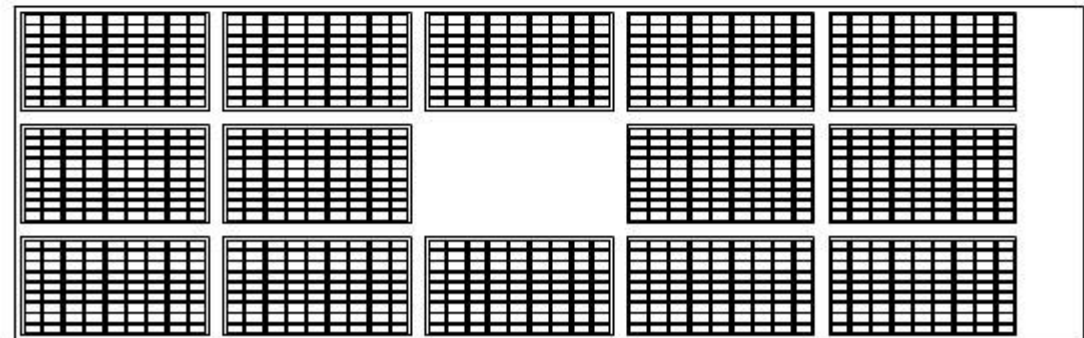
ELEVATION OF UNIT A

# *Elevation*

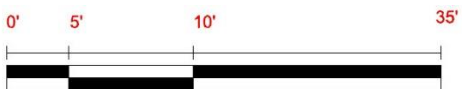
- UNIT B



ELEVATION OF UNIT B

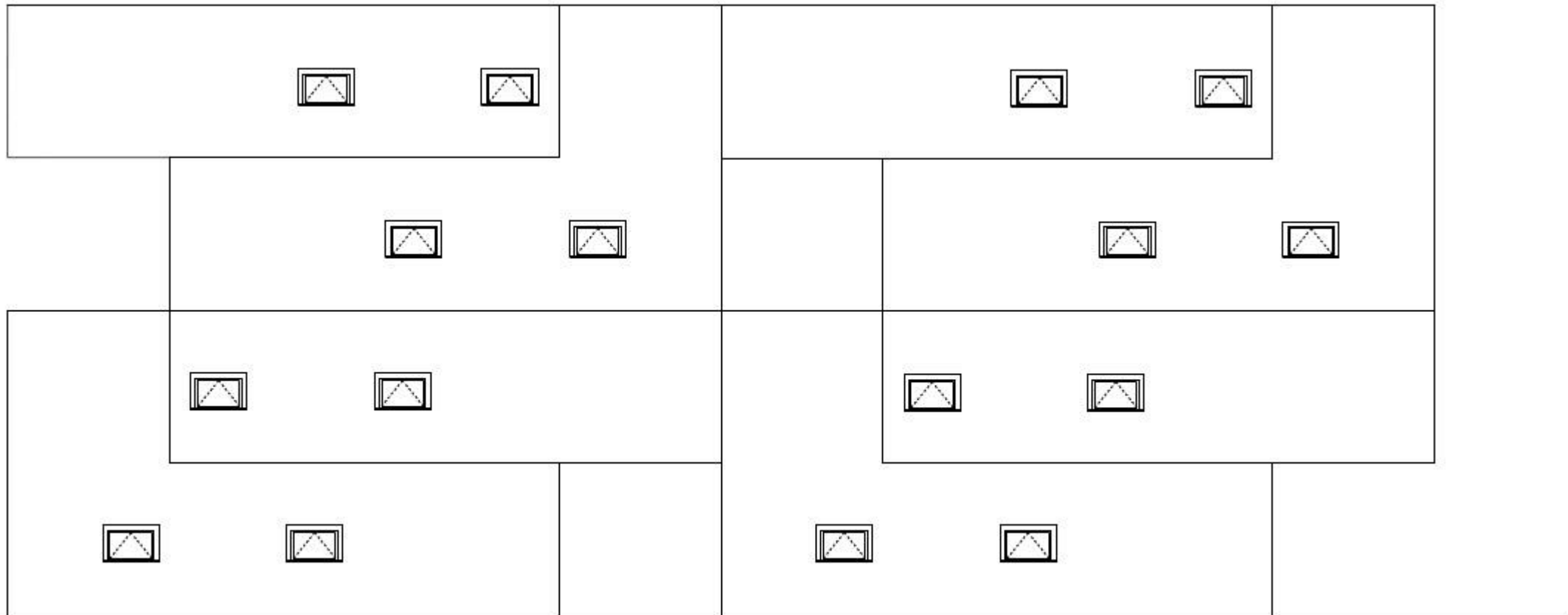


ELEVATION OF UNIT B



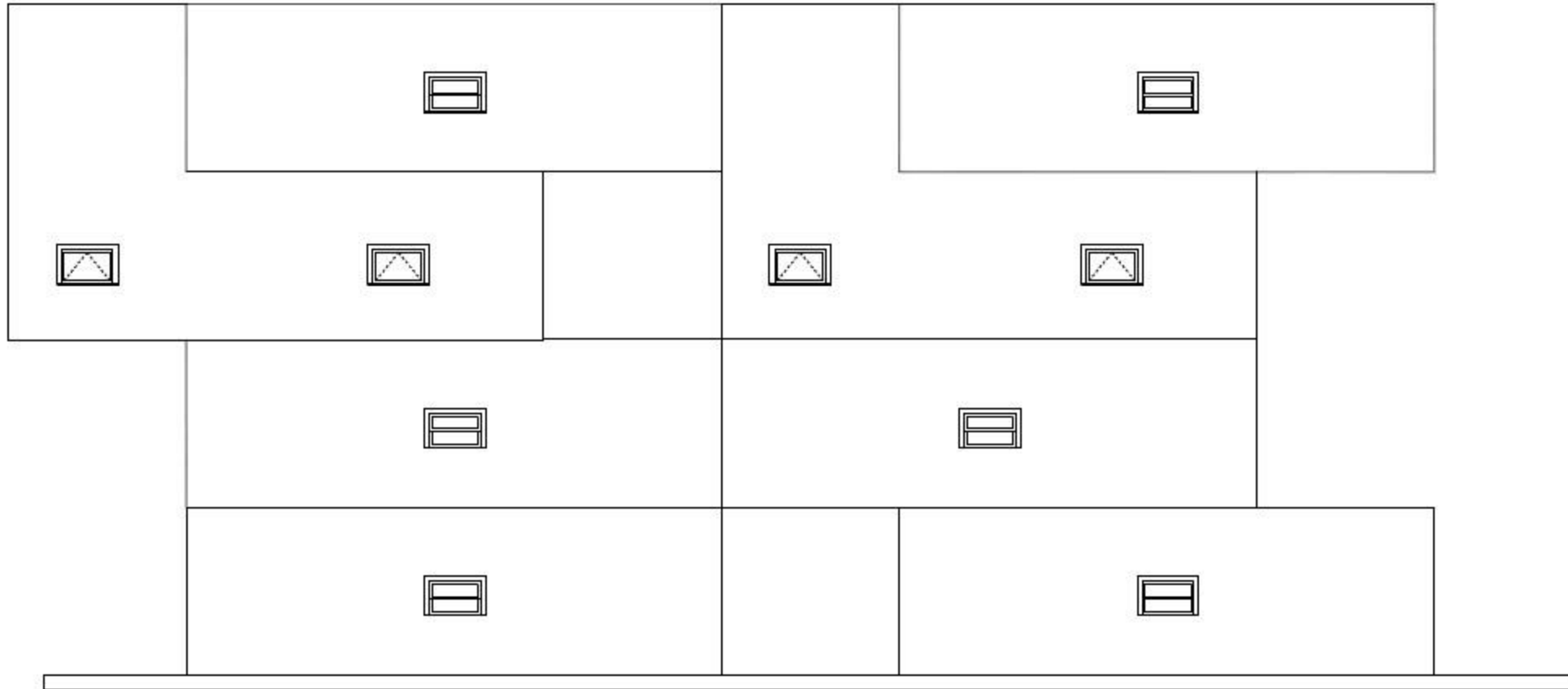
# *Elevation*

- SOUTH ELEVATION

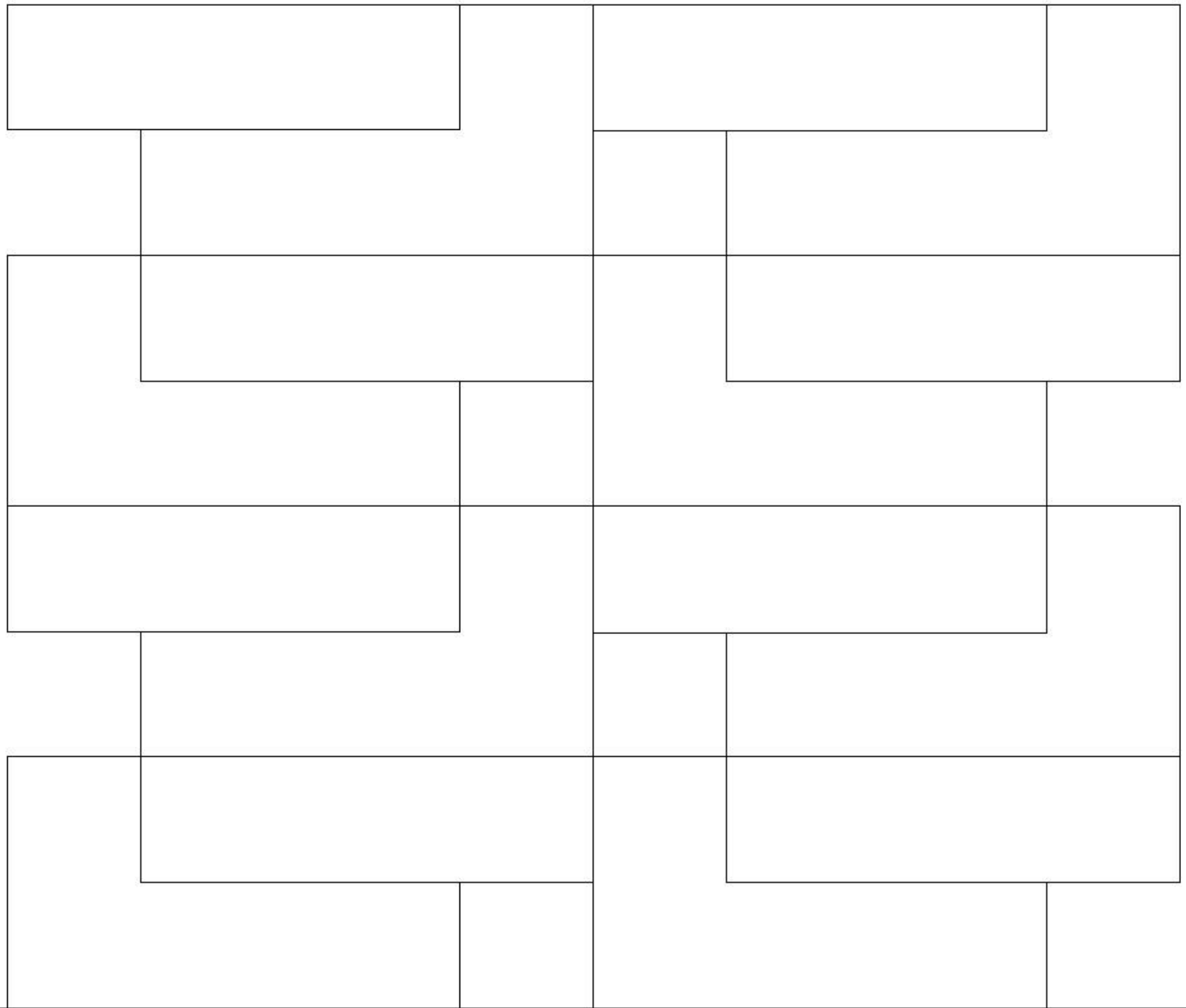


# *Elevation*

- EAST ELEVATION



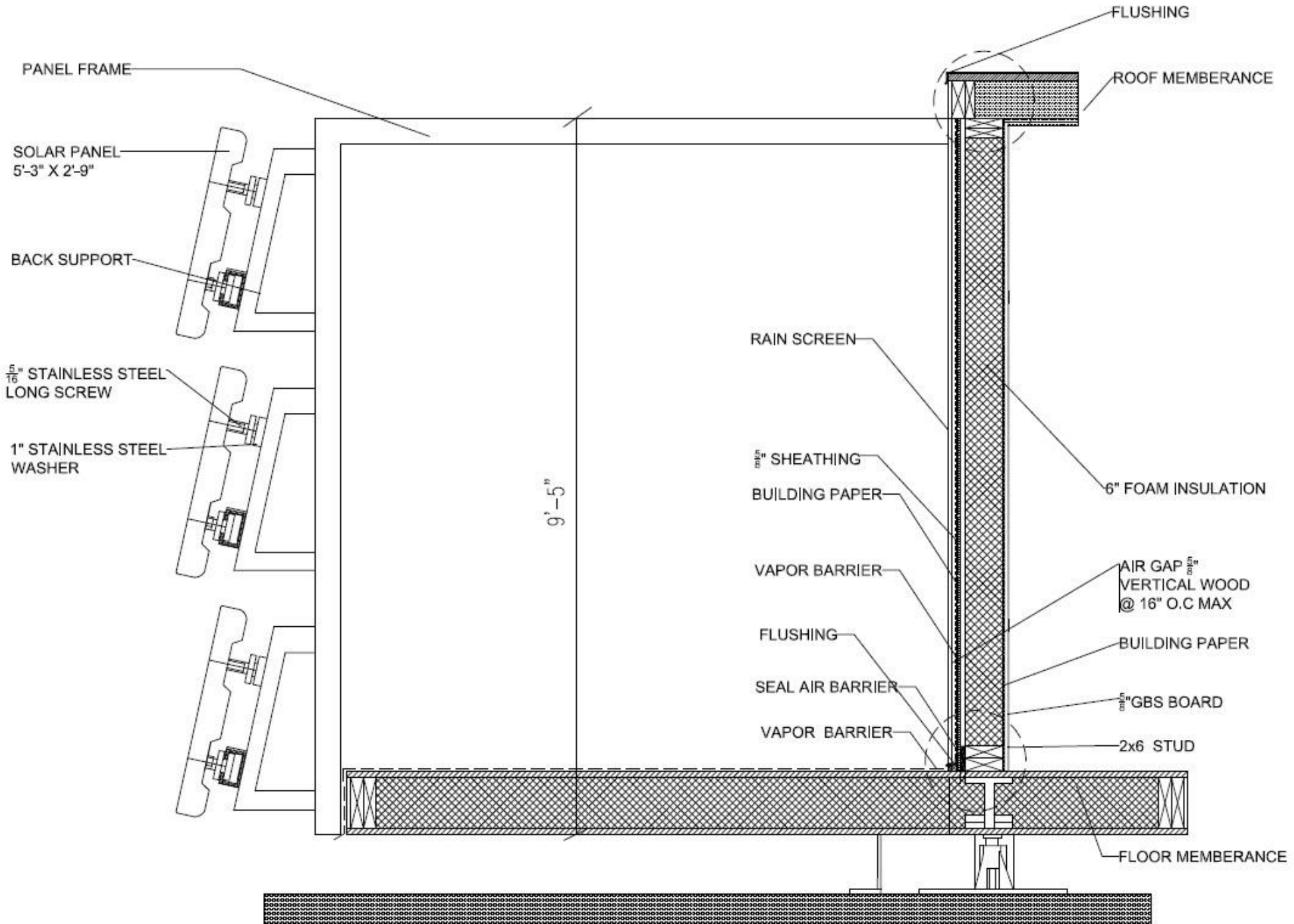
*Diagram*



• UNITE STACKING



# Wall Section



# Details

- *MODULE CONNECTION*

STRUCTURAL STEEL FRAMING

WOOD, PLASTIC, AND  
COMPOSITE FASTENING  
@  $\frac{3}{4}$ " O.C

1-1/8" T&G O.S.B FASTENED  
WITH PPSD SCREW O.C AT  
ALL SUPPORTED EDGES

$\frac{3}{4}$ " PLY WOOD SHIM

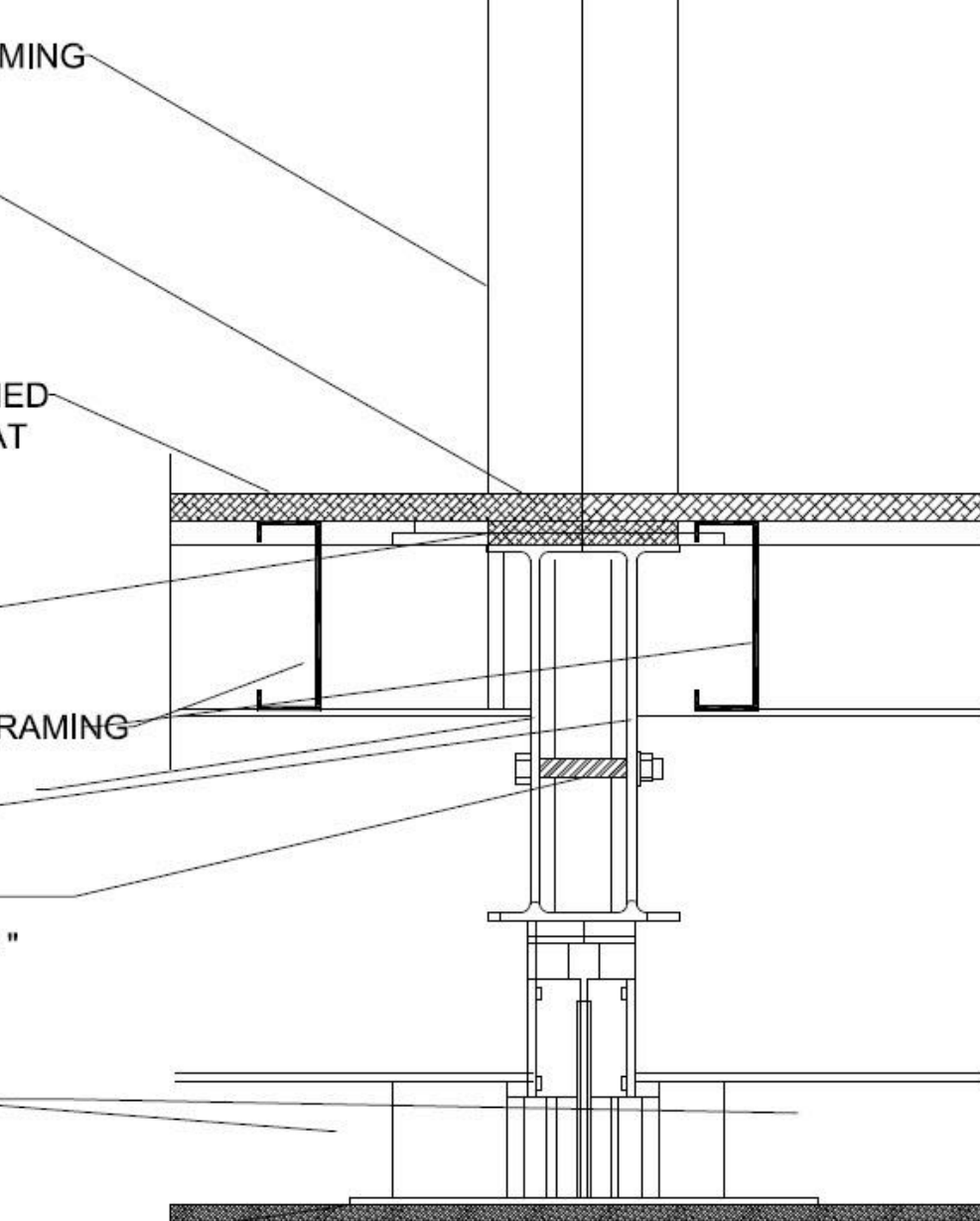
COLD FORMED METAL FRAMING

STEEL FRAMING

$\frac{3}{4}$ " WOOD AND  
COMPOSITE FASTENING "

7" SEISMIC  
PERIMETER PIER

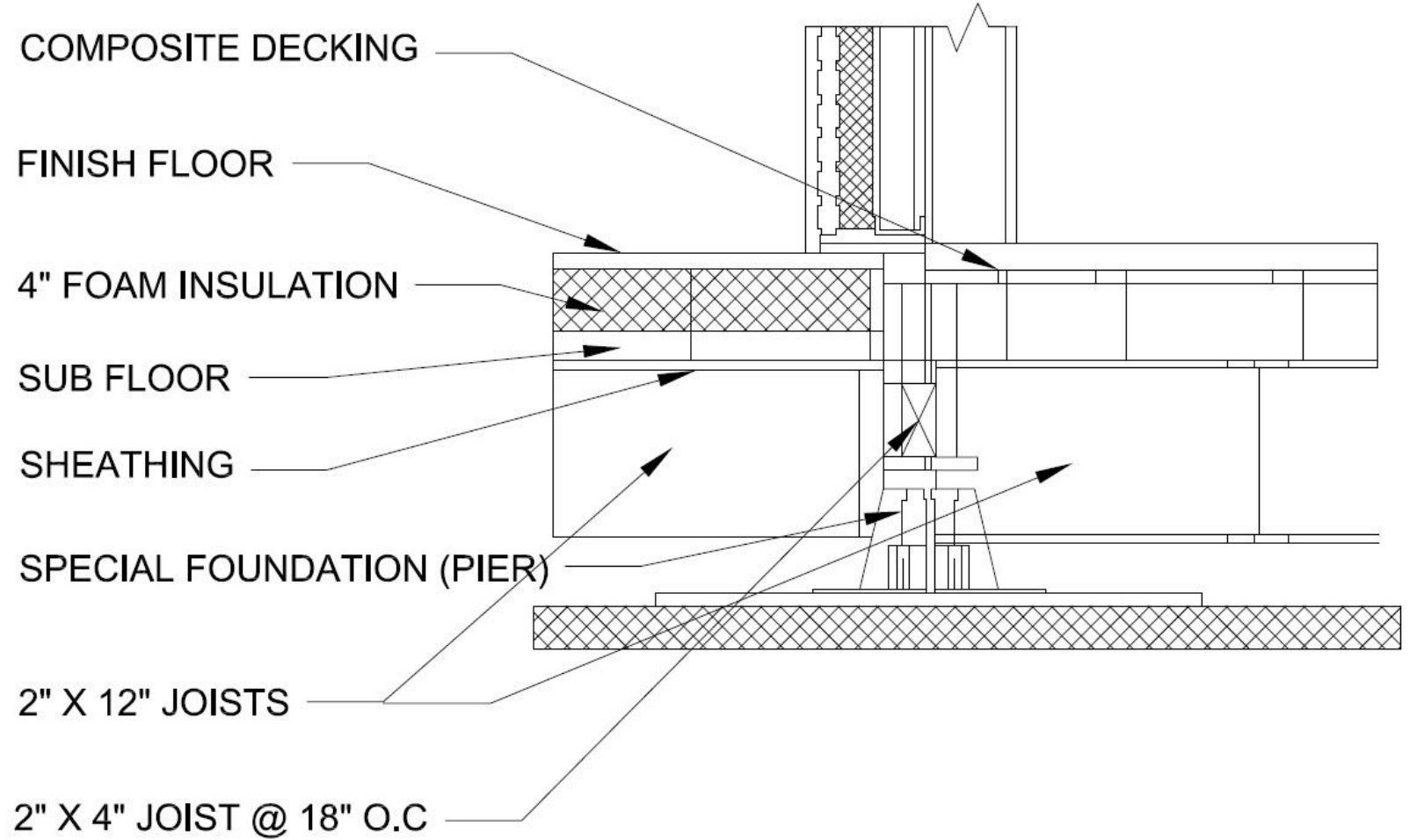
$\frac{1}{2}$ " PLYWOOD PAD



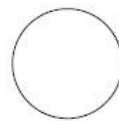
○ MODULE CONNECTION AT FLOOR

# Details

- FLOOR CONNECTION

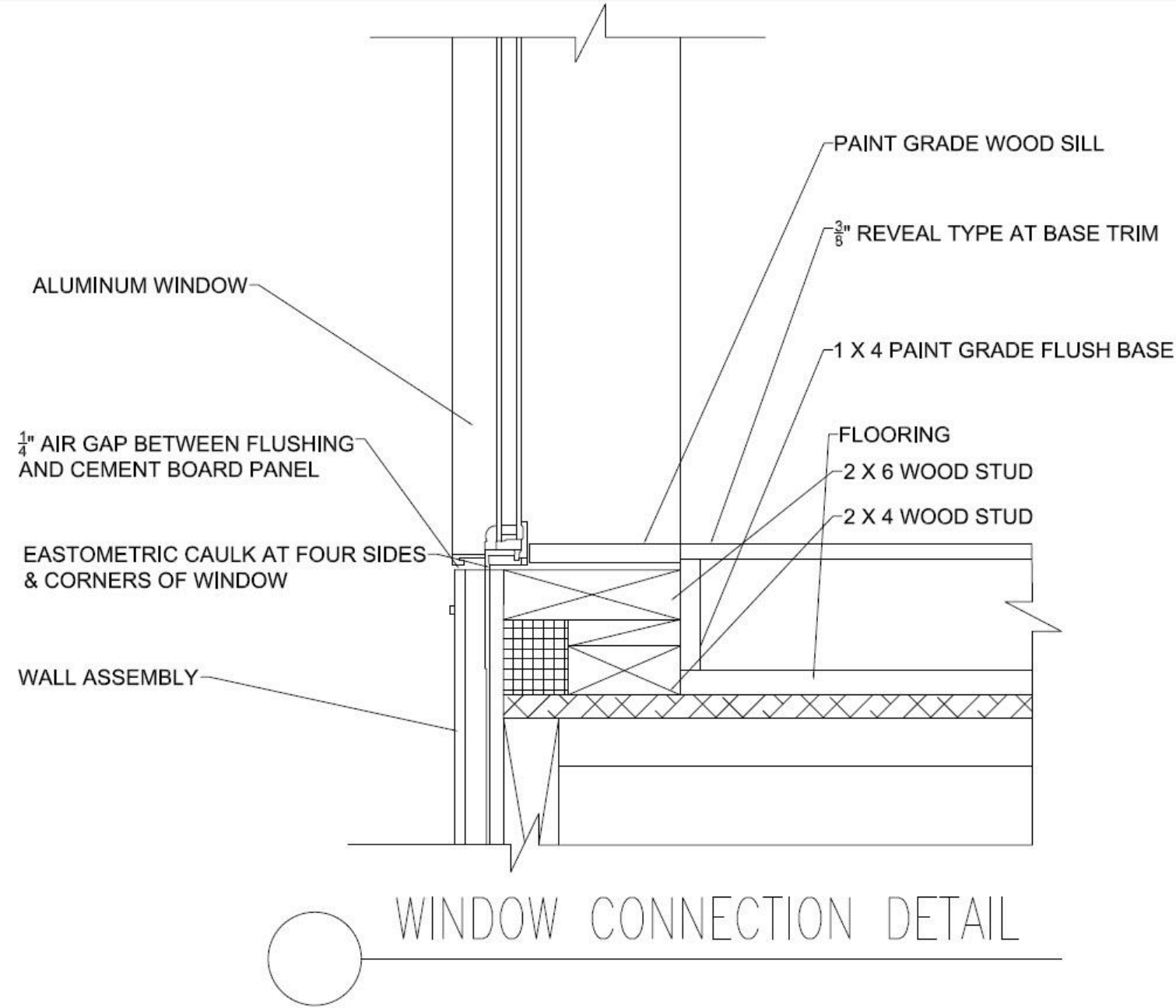


FLOOR CONNECTION DETAILS



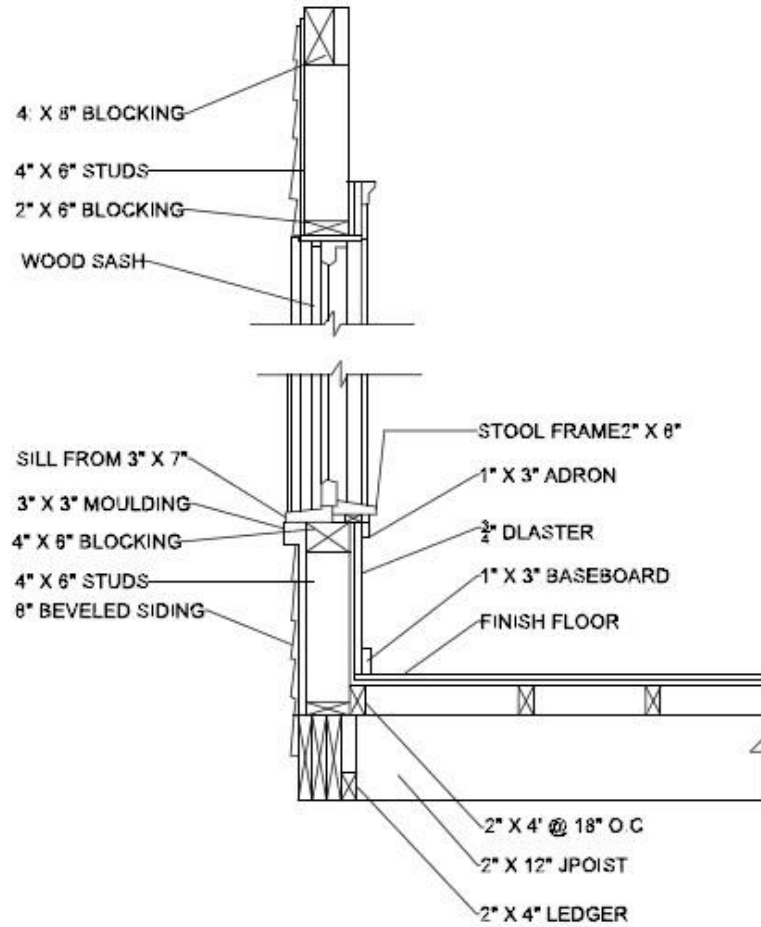
# Details

- WINDOW CONNECTION



# Details

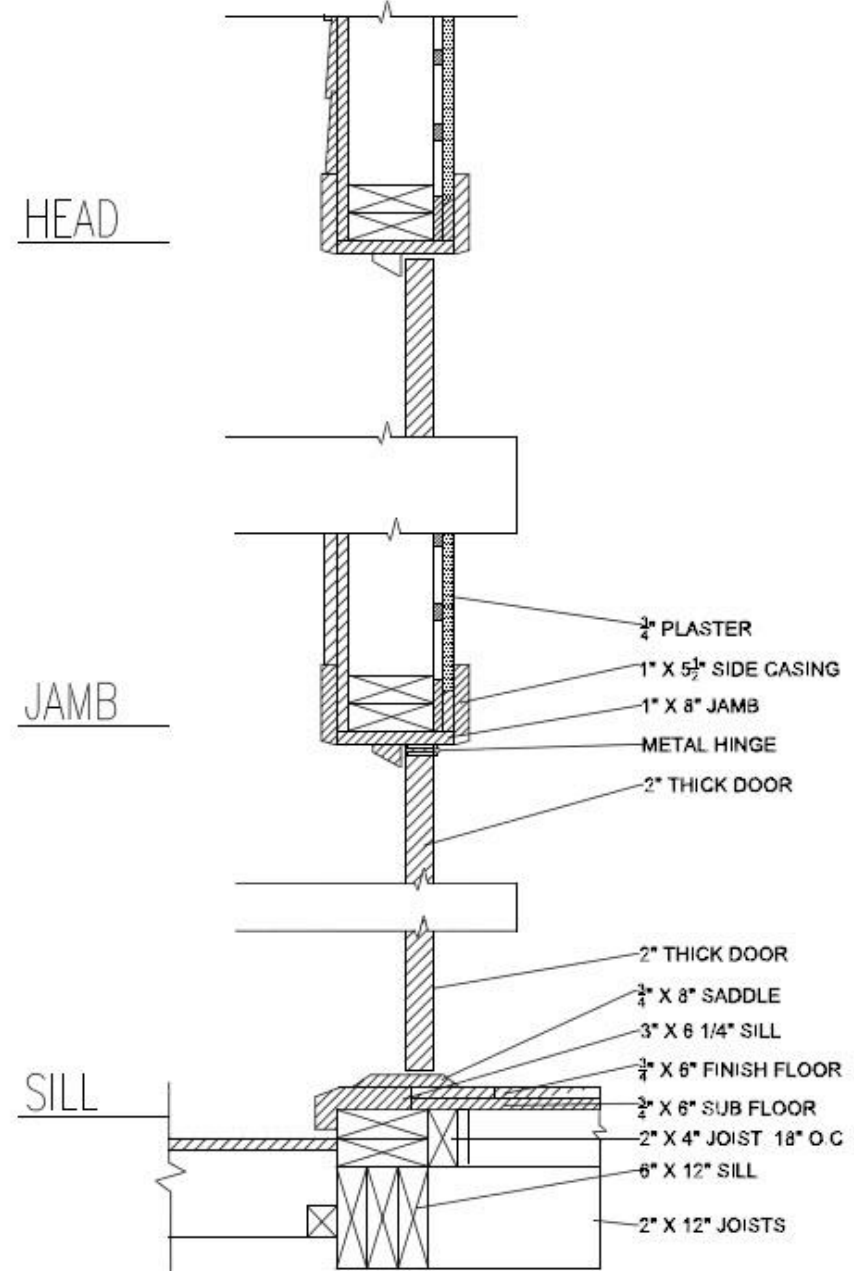
- WINDOW OPENING



HEAD

JAMB

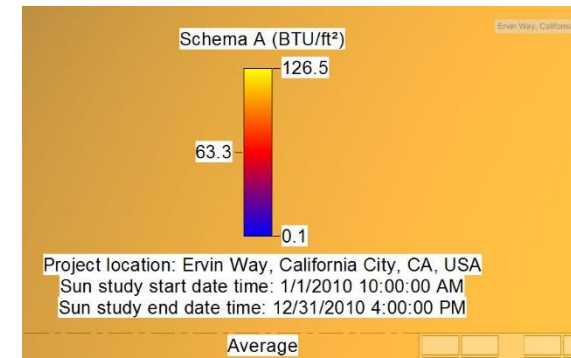
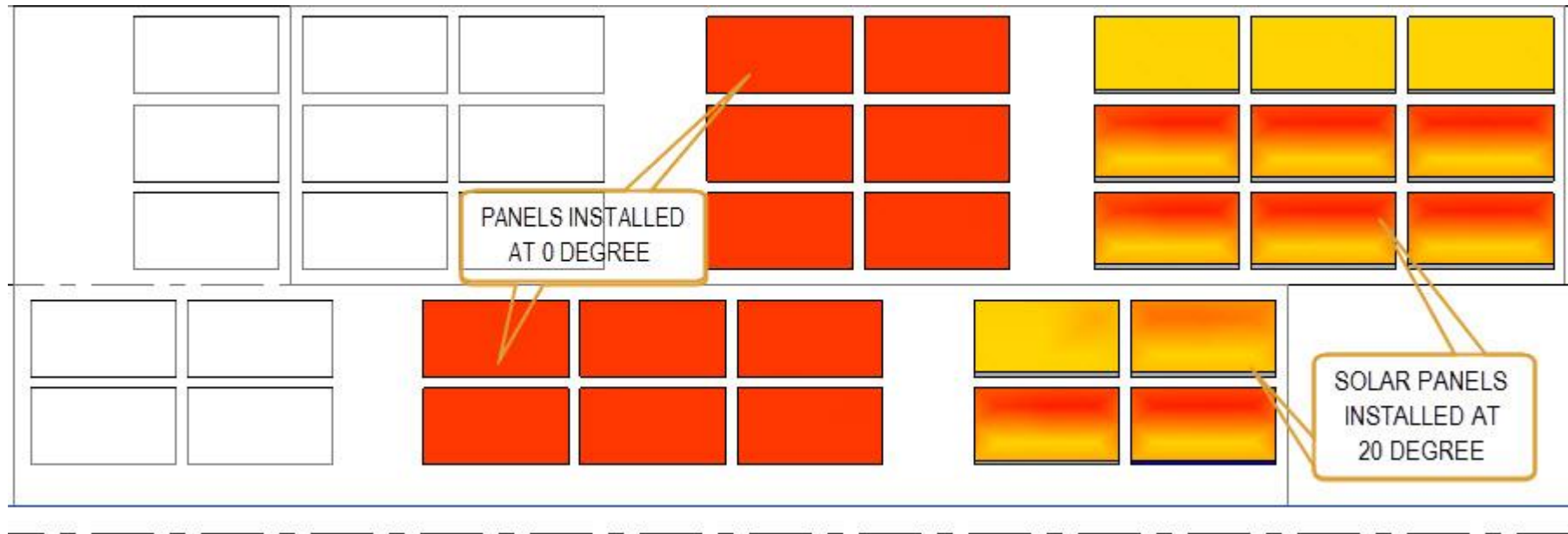
SILL



SECTION THRU DOOR

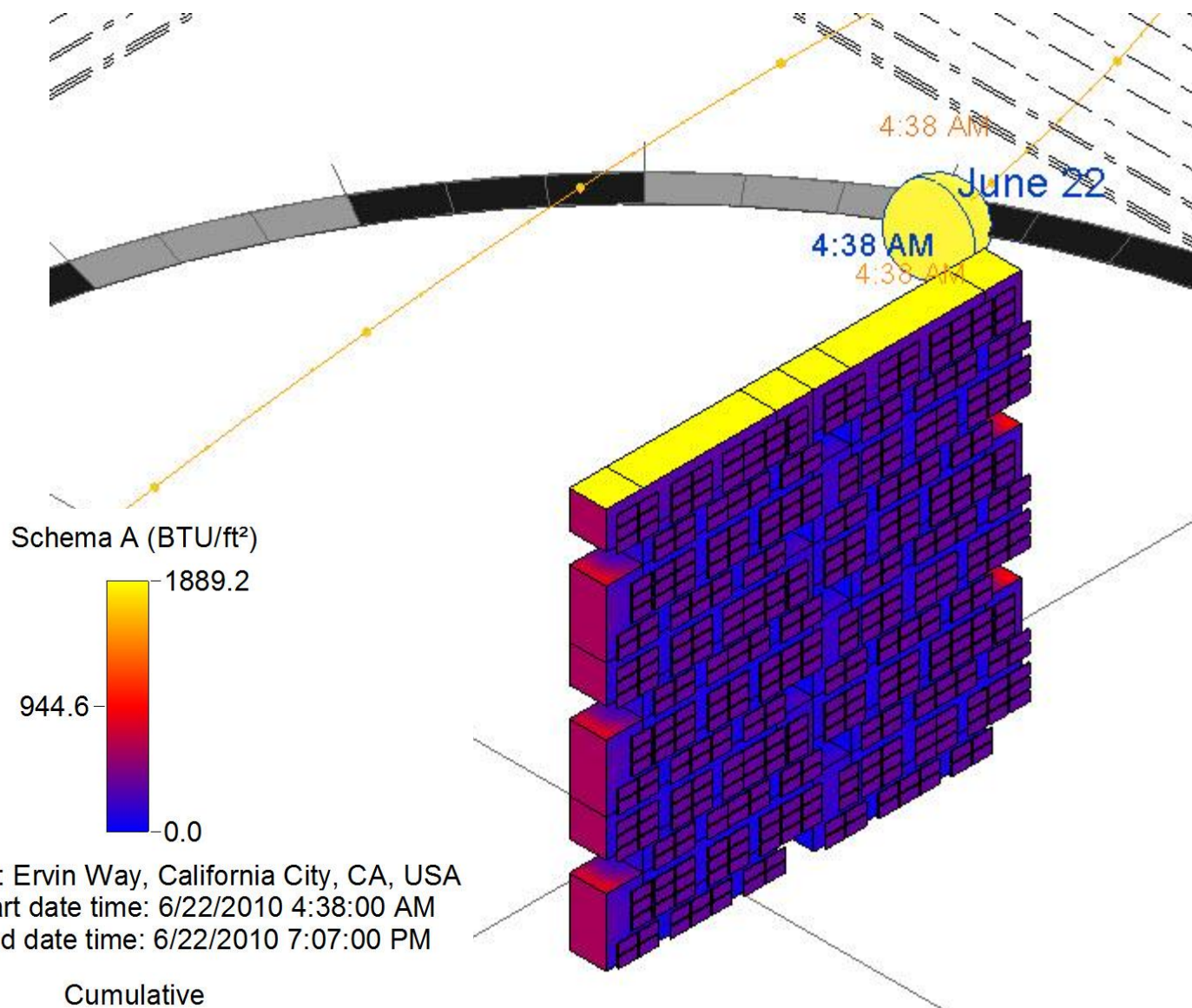
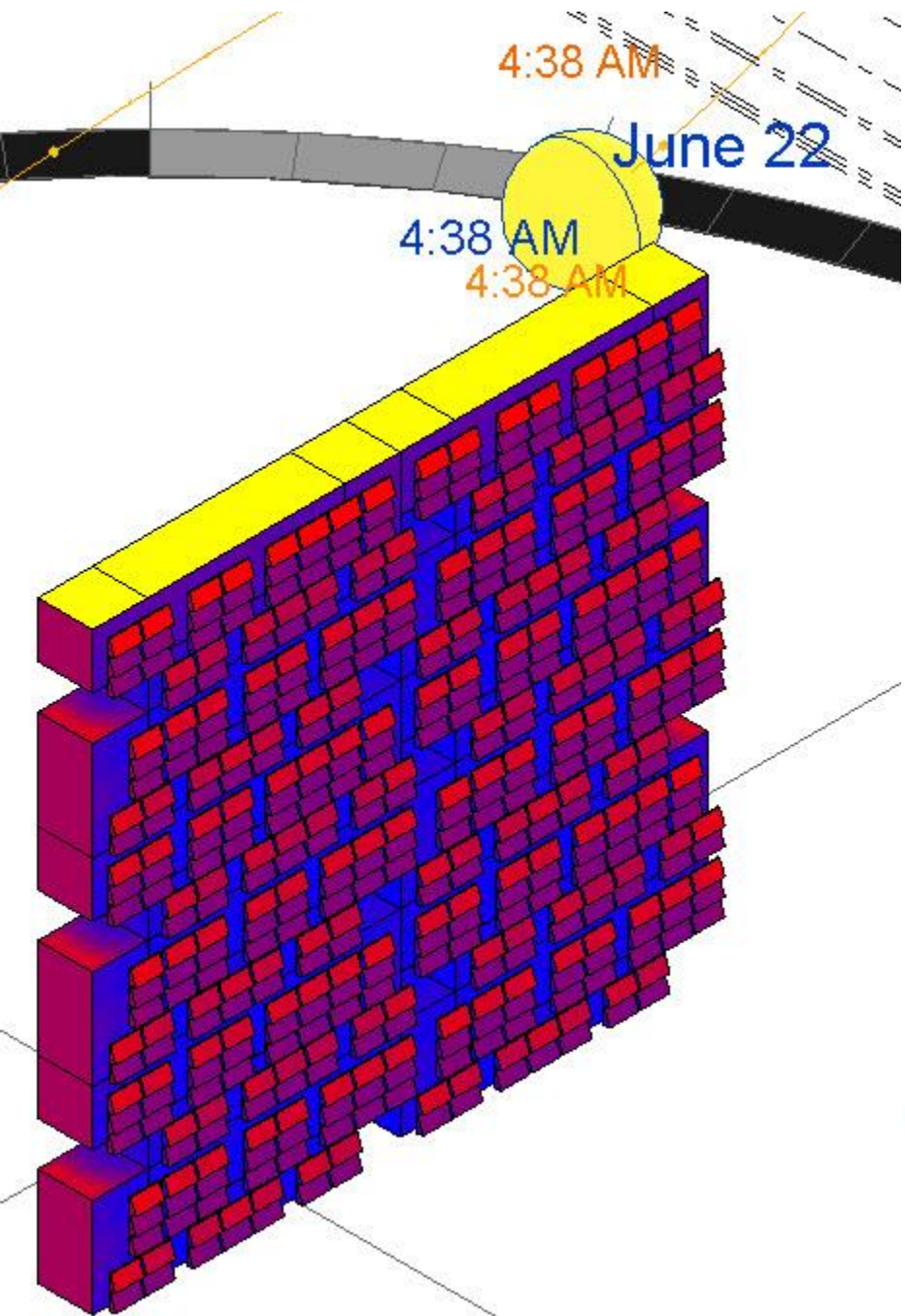
# Sun Study

## Camper Solar Panels With Different Angles





# Solar study – Summer Solstice

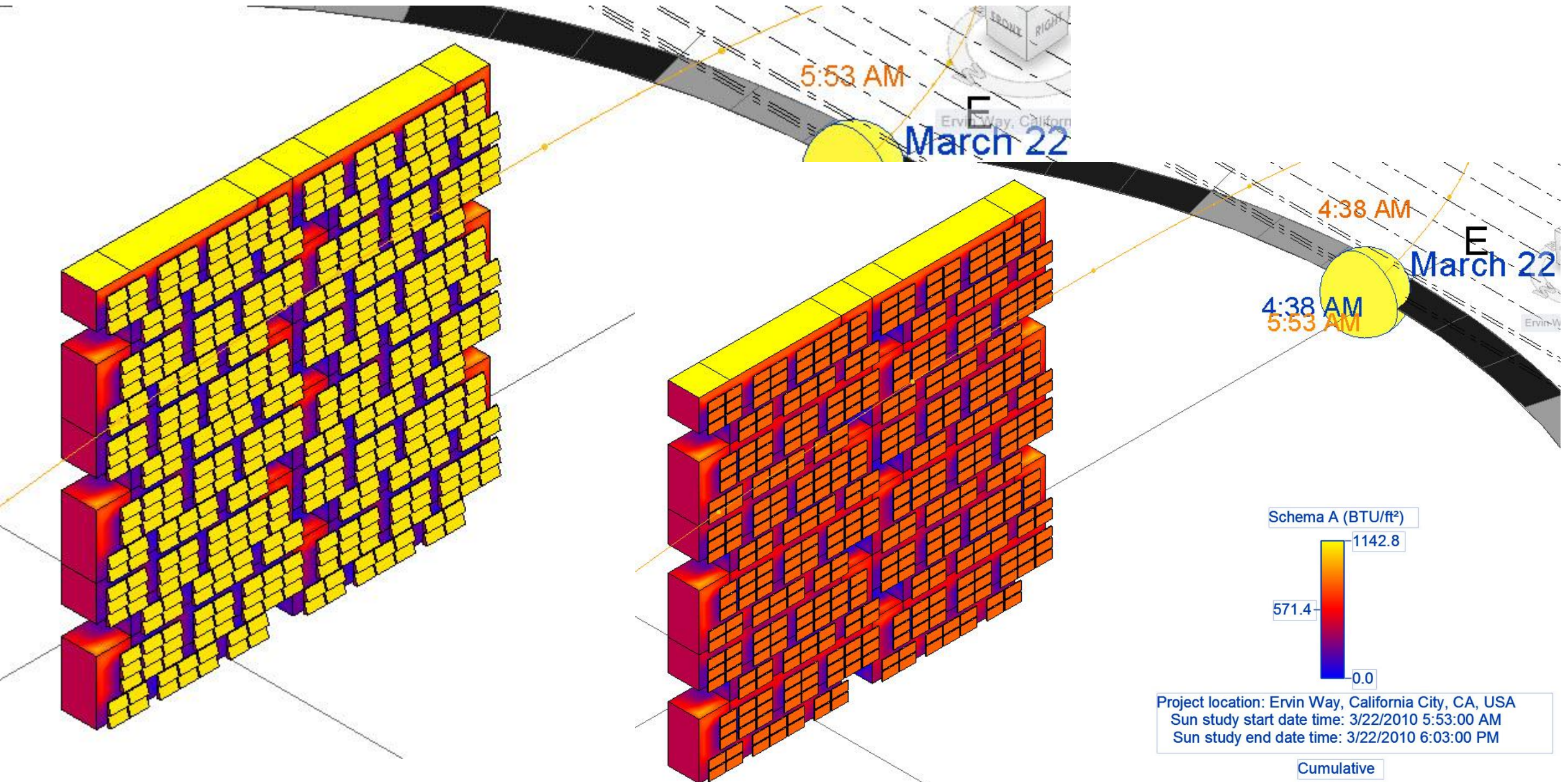


Project location: Ervin Way, California City, CA, USA  
Sun study start date time: 6/22/2010 4:38:00 AM  
Sun study end date time: 6/22/2010 7:07:00 PM

Cumulative



# Solar Study- Spring Equinox





# Solar Study – Fall Equinox

