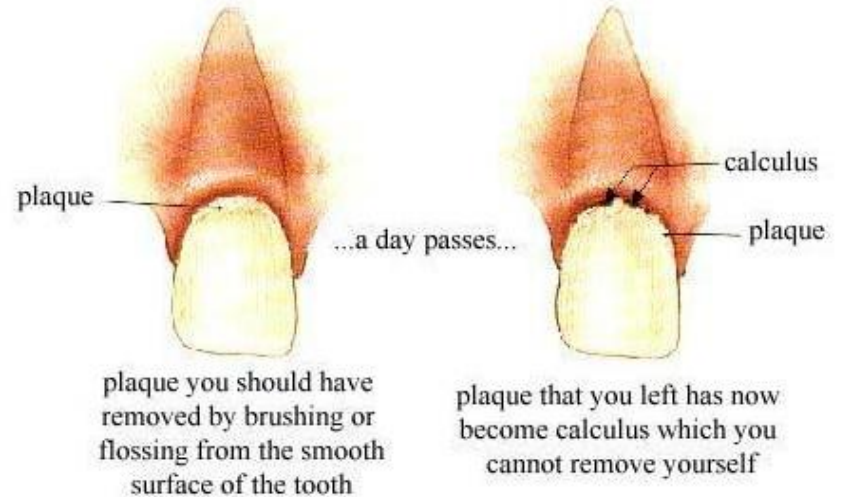
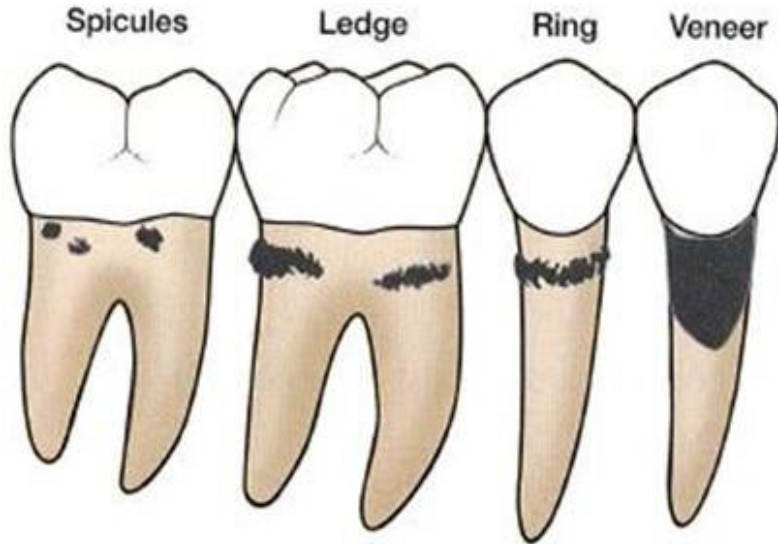

Calculus : Supra and Sub

— Victoria Hsu —
D230

Dental Calculus

In dentistry, calculus is a form of hardened dental plaque. It is caused by precipitation of minerals from saliva and gingival crevicular fluid in plaque on the teeth.



Supragingival Calculus

On the clinical crown coronal to the margin of the gingiva and visible in the oral cavity.



Supragingival Calculus

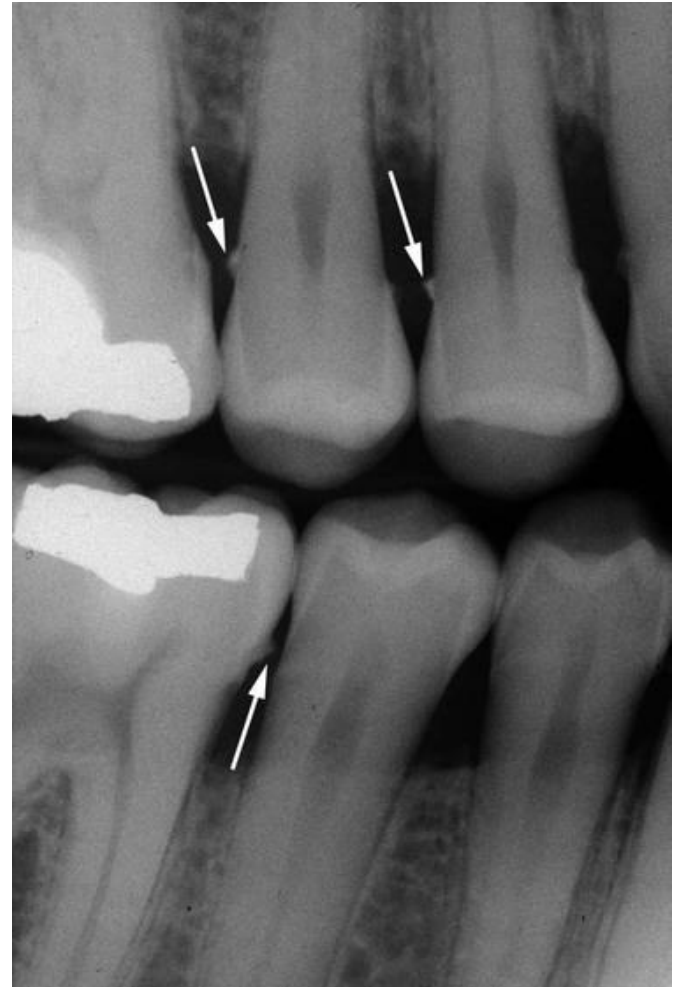


Calculus covers the entire surfaces of mandibular teeth.

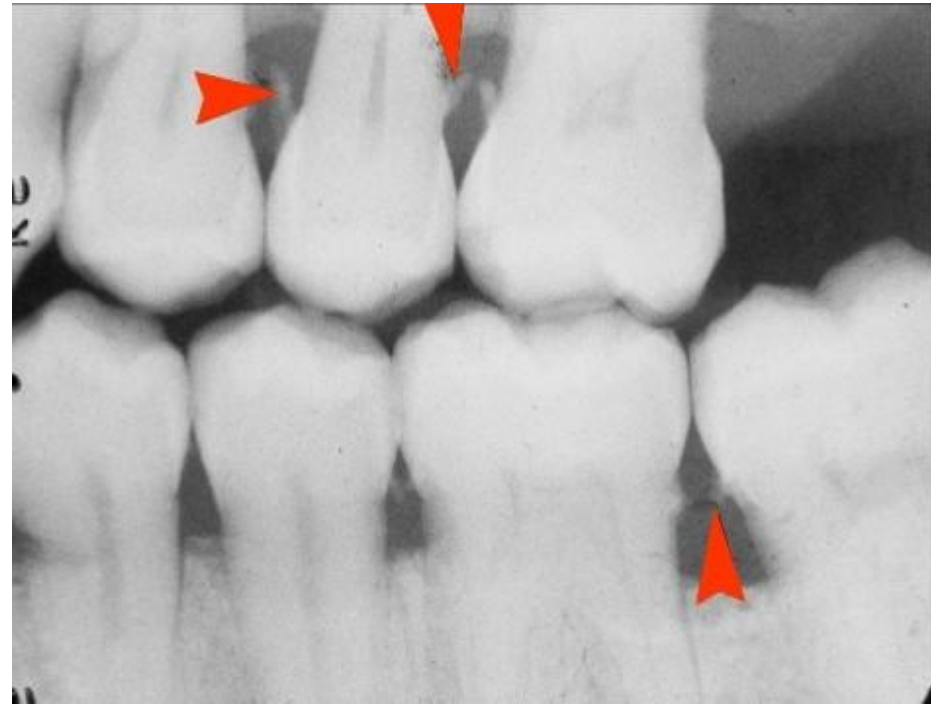
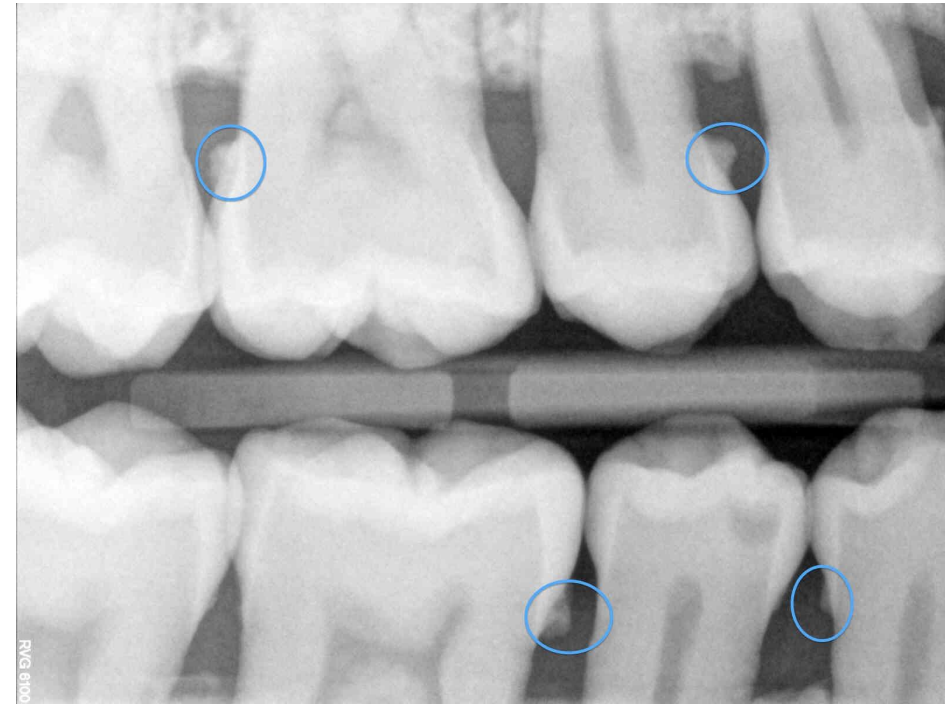
Subgingival Calculus

- **On the clinical crown apical to margin of the gingiva, Usually in periodontal pockets, not visible upon oral Examination.**
- **Both supragingival and subgingival calculus may be seen on radiographs**

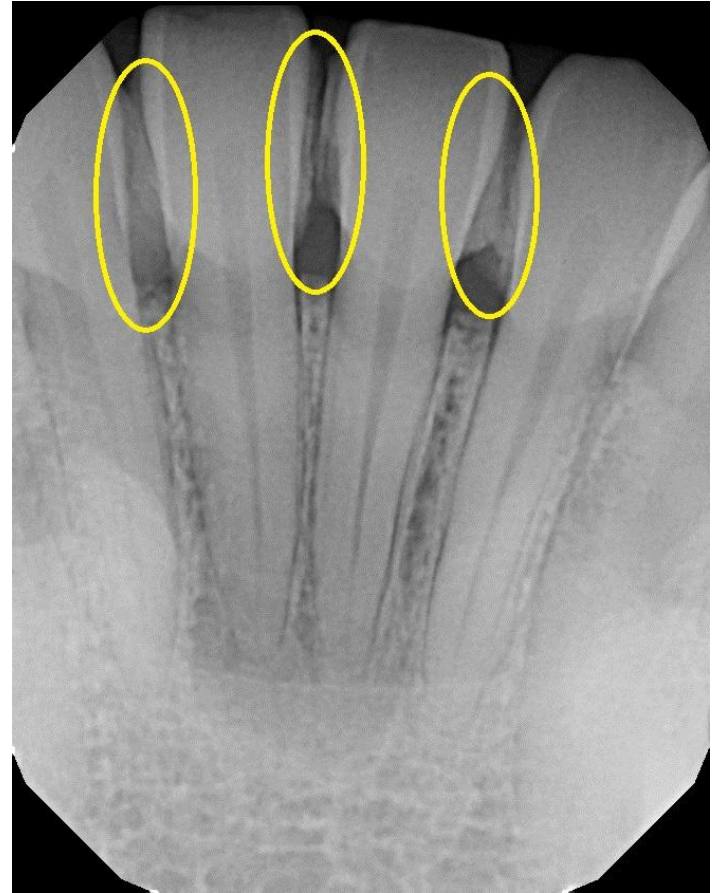
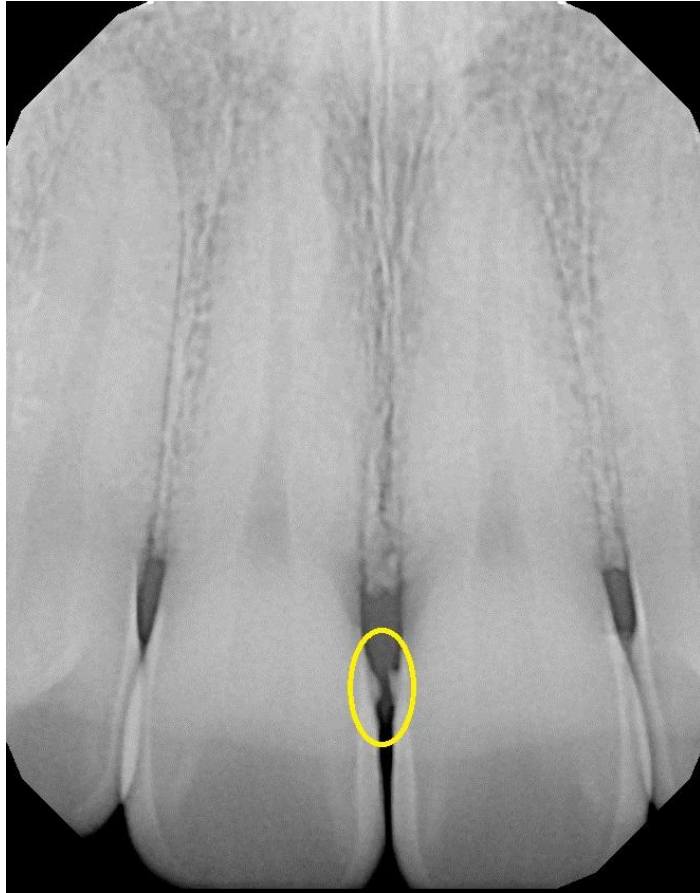
A bitewing radiograph illustrating subgingival Calculus deposits that are depicted as interproximal spurs (arrows)



Calculus showing on dental radiograph



Calculus appears radiopaque on the dental radiographs



Bitewing radiographs showing proximal calculus on primary and permanent teeth



References

<http://healthdrip.com/dental-calculus/>

[https://en.wikipedia.org/wiki/Calculus_\(dental\)](https://en.wikipedia.org/wiki/Calculus_(dental))

<https://pocketdentistry.com/7-the-role-of-dental-calculus-and-other-local-predisposing-factors/>

<https://www.slideshare.net/abhishekgakhar11/dental-calculus>

https://www.researchgate.net/figure/Lower-jaw-of-the-same-patient-Calculus-covers-the-entire-surfaces-of-the-teeth_fig7_237819432

<https://www.studiodentaire.com/en/conditions/abscess.php>

<https://www.slideshare.net/marwanalareeqe/radiology-for-periodontal-diseases>

<https://www.lakebaldwindental.com/blog/2018-07-31-dental-calculus-worse-math-class>

<https://doctorlib.info/pediatric/pediatric-dentistry-clinical-approach/14.html>