

# The Textile Kit™

Sample #

1

Sample Name

Unbleached Muslin

Fiber Content

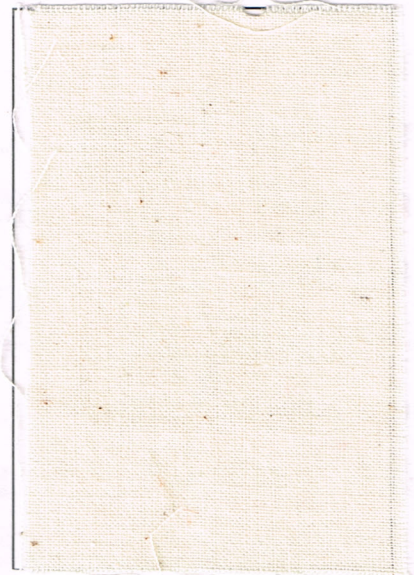
100% Cotton

Main Features

Woven fabric (natural color), carded yarn, balanced midweight plain weave, unfinished

Other Notes

Fabrication type impacts textile performance, somewhat smooth, 150 lower thread count, used for griege goods.



Sample #

2

Sample Name

Roc-Lon Drapery Lining

Fiber Content

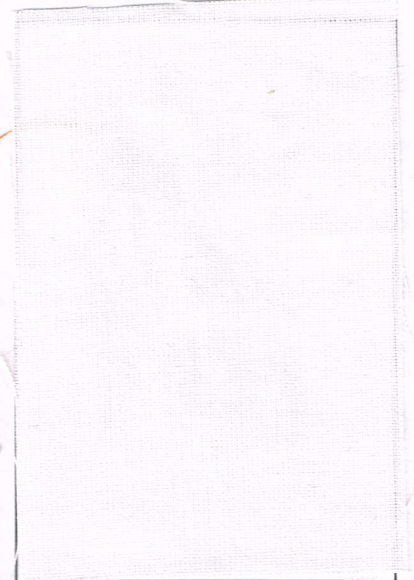
100% cotton

Main Features

Bleached, water resistant finish, optically brightened, Rain-No-Stain.

Other Notes

Finishing impacts textile performance, whitened and brightened, DWR (durable, water repellent finish).



Sample #

3

Sample Name

Glazed Chintz

Fiber Content

100% cotton

Main Features

Floral print, printed & glazed, balanced midweight plain weave, screen print, glazed finish

Other Notes

Stylized flower pattern, printing & finishing impact textile performance, glazed chintz is crisp & lustrous, pigment ink used, enhanced luster



# The Textile Kit™

Sample #

4

Sample Name

Pinpoint Oxford

Fiber Content

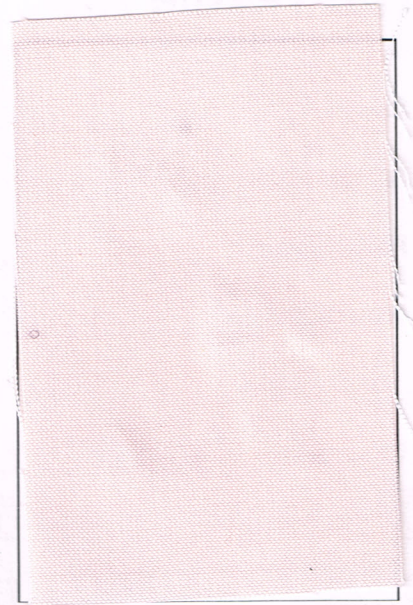
100% Pima Cotton

Main Features

Natural cellulose fibers, long staple cotton, ring spun yarns, basket weave.

Other Notes

Pima breed of cotton produces extra-long staple (ELS) fibers, ring spun (conventional spun yarns), higher thread count than regular oxford cloth.



Sample #

5

Sample Name

Certified Organic Cotton Duck

Fiber Content

100% Certified Organic Cotton

Main Features

Natural cellulose fibers, certified organically grown, basket weave

Other Notes

Organizations with varying standards "certify" cotton fibers as organically grown, coarse/heavy.



Sample #

6

Sample Name

Hankerchief Linen

Fiber Content

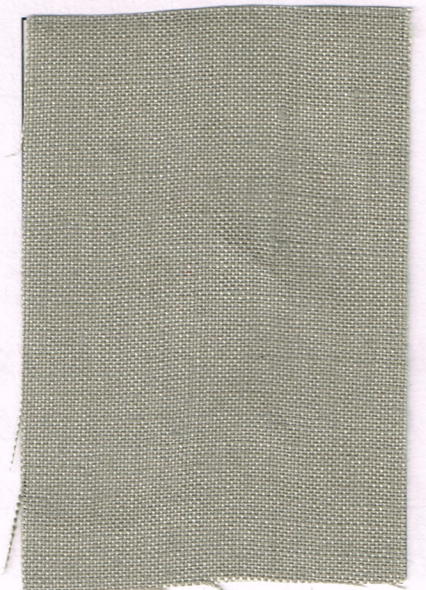
100% flax (linen)

Main Features

Natural cellulose fibers

Other Notes

Flax (linen) is a prestige fiber.



# The Textile Kit™

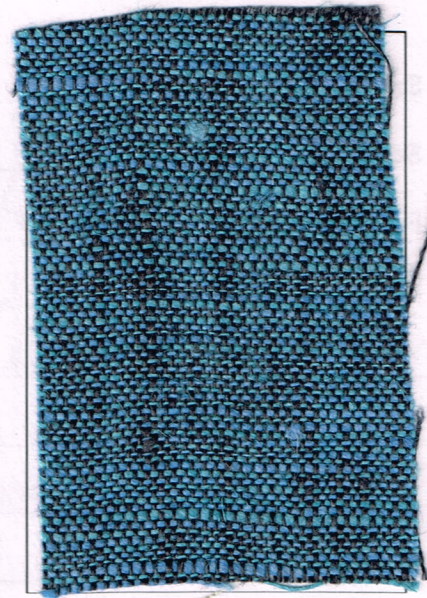
Sample # 7

Sample Name Linen Suiting

Fiber Content 100% Flax/Linen

Main Features Natural cellulose fibers/beetled

Other Notes Flax (linen) was once a common fabric, enhanced luster.



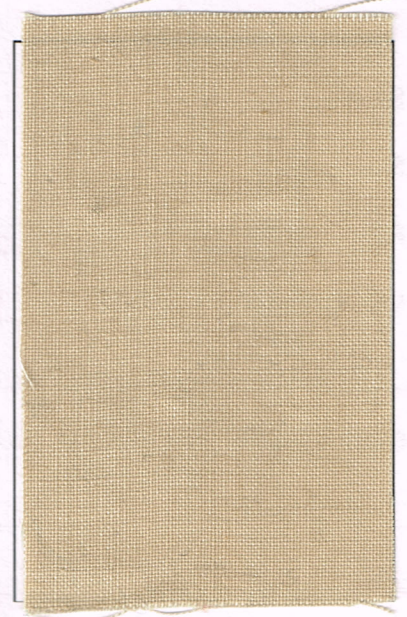
Sample # 8

Sample Name Ramie

Fiber Content 100% Ramie

Main Features Natural cellulose fibers

Other Notes Best fiber from stem of ramie plant, ancient textile fiber, similar to flax.



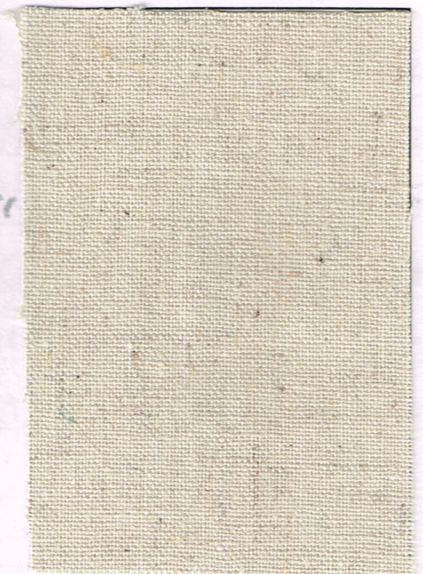
Sample # 9

Sample Name Hemp Blend

Fiber Content Hemp, organic cotton, recycled polyester

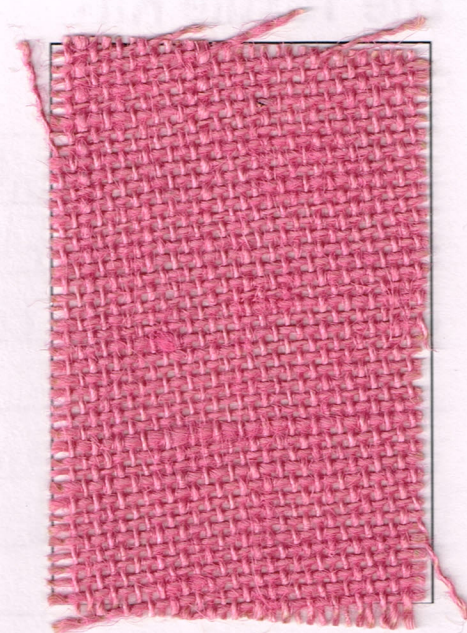
Main Features Natural cellulose, synthetic fiber blend, recycled synthetic fiber blend.

Other Notes Hemp and organic cotton, blended with recycled polyester, polyester adds strength to natural fibers.

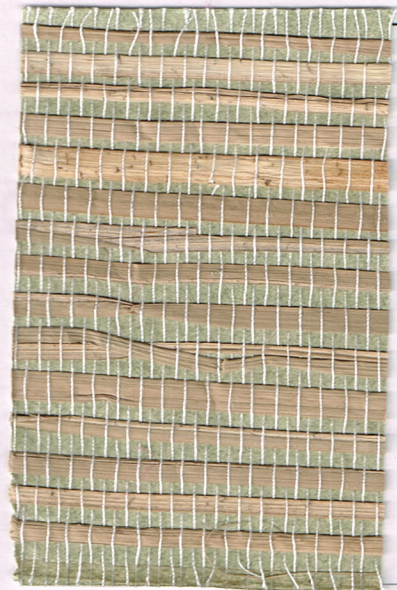


# The Textile Kit™

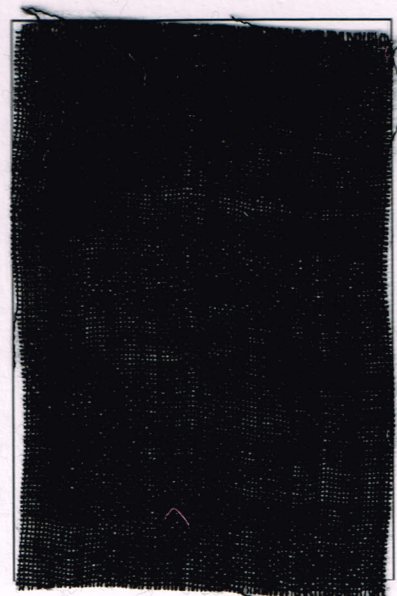
Sample # 10  
Sample Name Burlap  
Fiber Content 100% Jute  
Main Features Natural cellulose fibers, balanced  
heavyweight plain weave.  
Other Notes Bast Fiber from stem of jute  
plant, ancient fiber, burlap typically jute.



Sample # 11  
Sample Name Grasscloth Wallpaper  
Fiber Content 100% Natural Seagrass  
Main Features Natural cellulose material.  
Other Notes Seagrass leaves, paper backed.



Sample # 12  
Sample Name Wool gauze  
Fiber Content 100% Wool  
Main Features Natural protein fibers, balanced  
low count sheer plain weave  
Other Notes From sheep, spun yarns with  
low thread count.



# The Textile Kit™

Sample #

34

Sample Name

DuPont Sorona

Fiber Content

100% trixta (PTT=polytrimethyleneterephthalate)

Main Features

Polyester variant produced partially from petrochemicals & fermented feed corn sugars.

Other Notes

Contains 37% renewably sourced ingredients by weight.



Sample #

35

Sample Name

DuPont Tyvek

Fiber Content

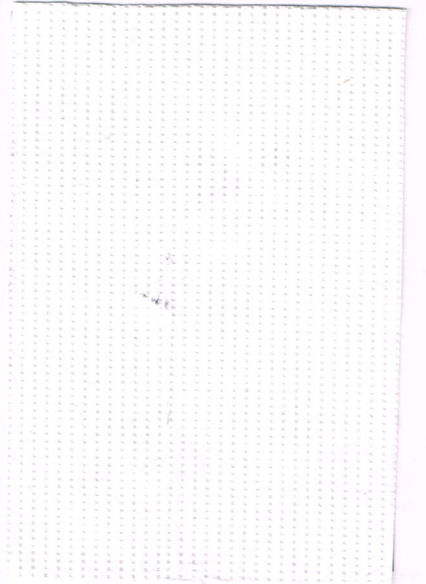
100% Olefin (Polyethylene)

Main Features

Synthetic fibers/fiberweb

Other Notes

Olefin is strong and lightweight



Sample #

36

Sample Name

Weed Control Fabric

Fiber Content

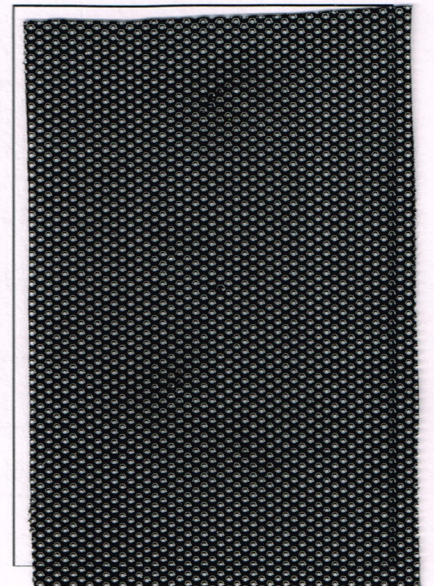
100% Olefin (Polyethylene)

Main Features

Synthetic fibers, film, UV treated.

Other Notes

Generic olefin, olefin is a low cost fiber, made from solution, ultraviolet resistant.



# The Textile Kit™

Sample # 40

Sample Name Swimwear

Fiber Content 80% Nylon, 20% Spandex

Main Features Synthetic, elastomeric fiber blend, corespun yarns, double weft knit.

Other Notes Generic spandex adds active stretch to knits, nylon over spandex core, interlocking gaiting, filament, lustrous yarn.



Sample # 41

Sample Name Stretch Woven

Fiber Content 97% cotton, 3% Lycra Spandex

Main Features Cellulose, elastometric fiber blend

Other Notes Spandex adds comfort stretch to wovens.



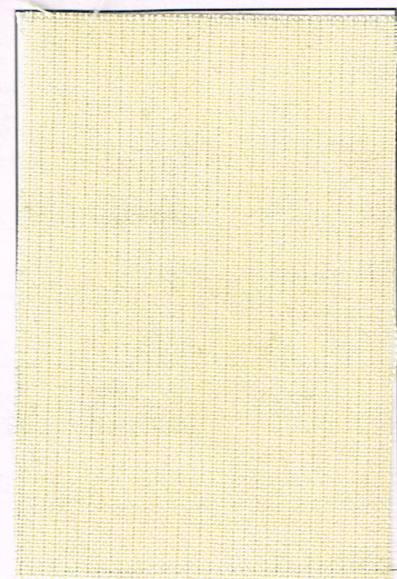
Sample # 42

Sample Name DuPont NOMEX Aramid

Fiber Content 100% Nomex Aramid

Main Features Aromatic polyamide synthetic fibers.

Other Notes Strong plus inherently heat and flame resistant fiber



# The Textile Kit™

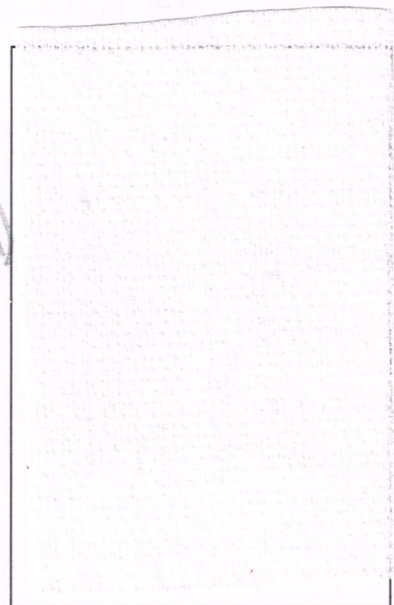
Sample # 166

Sample Name Nonwoven wipe

Fiber Content 80% wood pulp, 20% polypropylene (olefin)

Main Features Synthetic fiber blend, fiberweb

Other Notes Olefin is non-absorbent but wicks, wet laid and spunlaced (hydro-entangled), 54 GSM



Sample # 167

Sample Name Imitation Suede

Fiber Content 78% Polyester / 22% Nylon

Main Features Fiberweb

Other Notes Needlepunched foam



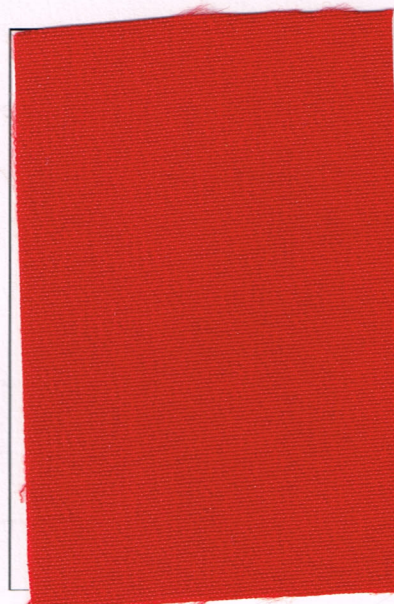
Sample # 168

Sample Name Gore-Tex

Fiber Content PTFE (polytetrafluoroethylene)

Main Features Microporous film of PTFE laminated to back of face fabric.

Other Notes Waterproof yet breathable



# The Textile Kit™

Sample # 169  
Sample Name Black out lining  
Fiber Content 70% Polyester/30% cotton/3-pass foam  
Main Features Foam coating, tented

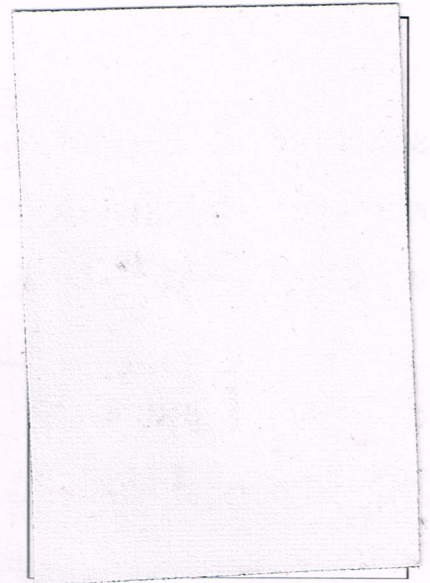
Other Notes On back of woven fabric, tension applied to the fabric while it is finished and dried.

Sample # 170  
Sample Name Pleather (imitation leather)  
Fiber Content 100% vinyl face (back varies)  
Main Features Expanded film face

Other Notes Laminated to backing fabric

Sample # 171  
Sample Name Quilted (traditional)  
Fiber Content Face and back vary/polyester fiberfill  
Main Features Fiberweb, machine stitch

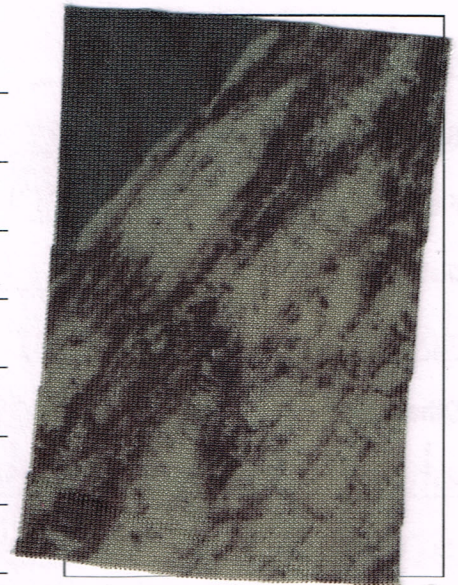
quilted  
Other Notes Polyester fiberfill (middle layer) only, woven face + fiberweb batting + backing fabric.



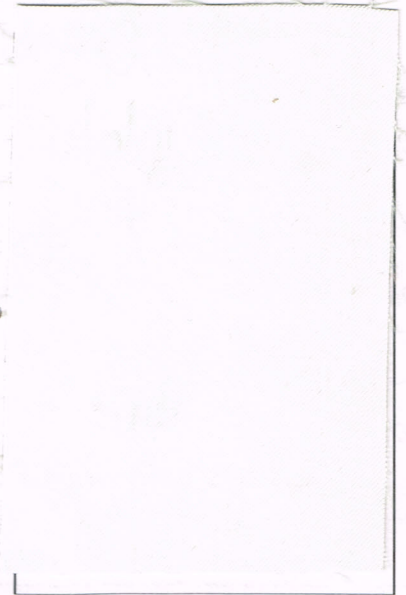


# The Textile Kit™

Sample # 205  
Sample Name Massy Oak Camo  
Fiber Content Nylon/Spandex  
Main Features target market print,  
antimicrobial finish.  
Other Notes Camouflage for hunters,  
antimicrobial due to nanoparticle  
silver.



Sample # 206  
Sample Name DVElite  
Fiber Content DWR treated face, polyurethane coating  
Main Features 3 layers: middle contains PTFE, high visibility,  
military, police, fire use, windproof, chemical resistant  
Other Notes DWR (Durable water resistant) face fabric  
resists rain. middle is waterproof, breathable, fire +  
chemical resistant. backing adds durability + protection.



Sample # 207  
Sample Name 5x8 Rib Knit  
Fiber Content Polyester/Cotton  
Main Features Additional example of rib knit,  
double weft knit  
Other Notes A.K.A. poor boy knit, another  
variation in rib knit stitch combinations.

