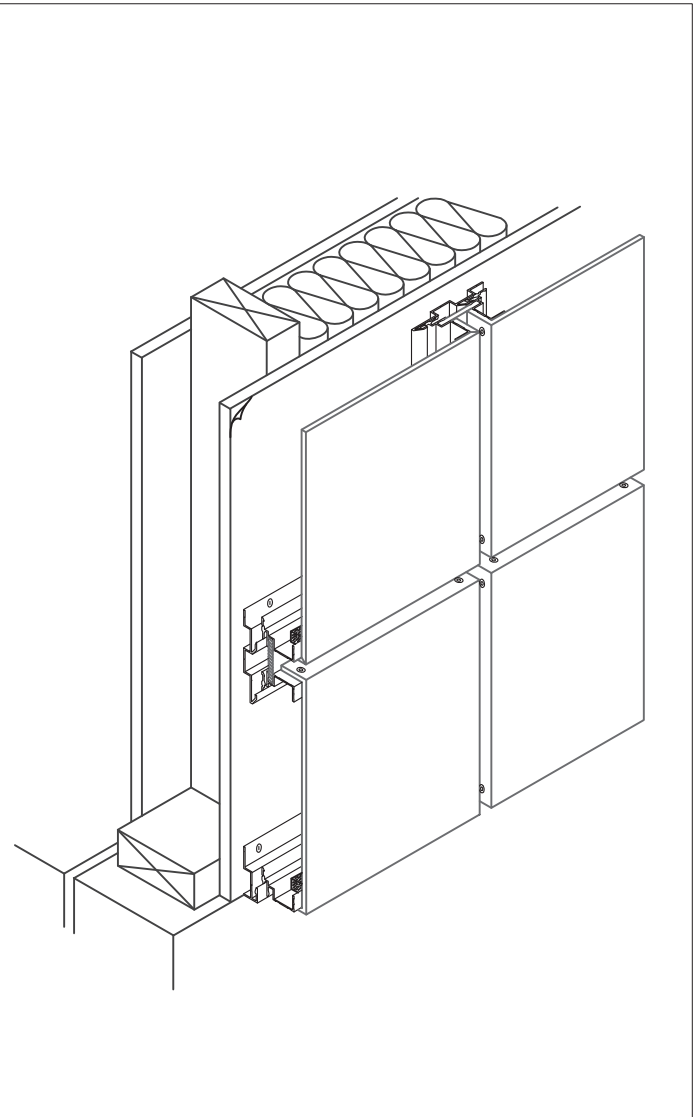
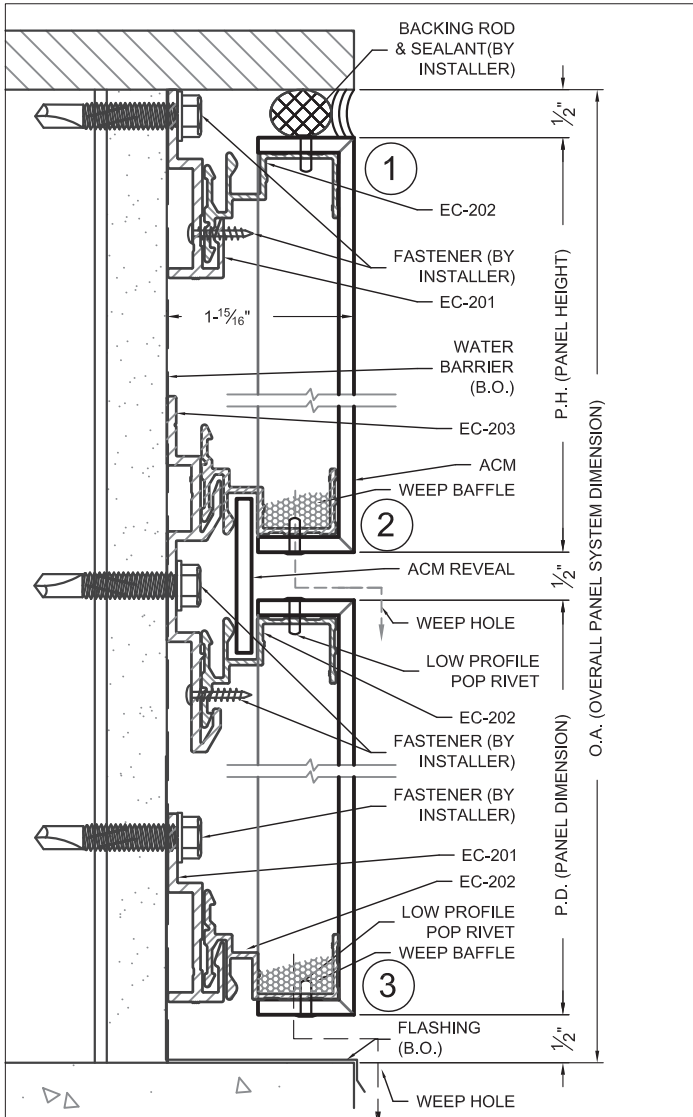


EC-200

RAIN SCREEN PRESSURE EQUALIZED
DRY-JOINT SYSTEM



P.O. Box 217, 407 53RD STREET
BELLAIRE, OHIO 43906
(740) 676-2400
(740) 671-8760 Fax
www.ecmsinc.net
ecms@ecmsinc.net



- ① TYPICAL HEAD DETAIL
- ② TYPICAL HORIZONTAL/VERTICAL JOINT
- ③ TYPICAL BASE JOINT

EC-200 PANEL SYSTEM - ISOMETRIC

EC-200 Dry Joint System

The EC-200 Aluminum Composite Panel (ACP) System allows minimal water permeation. The minimal amount of water that does penetrate the system drains through weep holes. This system utilizes full length EC-202 extrusions with 6" clips (EC-2032). The EC-200 utilizes a "floating" panel attached to the extrusion to provide an ACP reveal of 1/2" to 12". The system requires no caulking with the exception of joints at perimeter edges. The EC-200 provides a hi-tech, clean look and is easy to install.

The EC-200 System is compatible with 4mm, 6mm, & 8mm ACM Panels.

EC-200

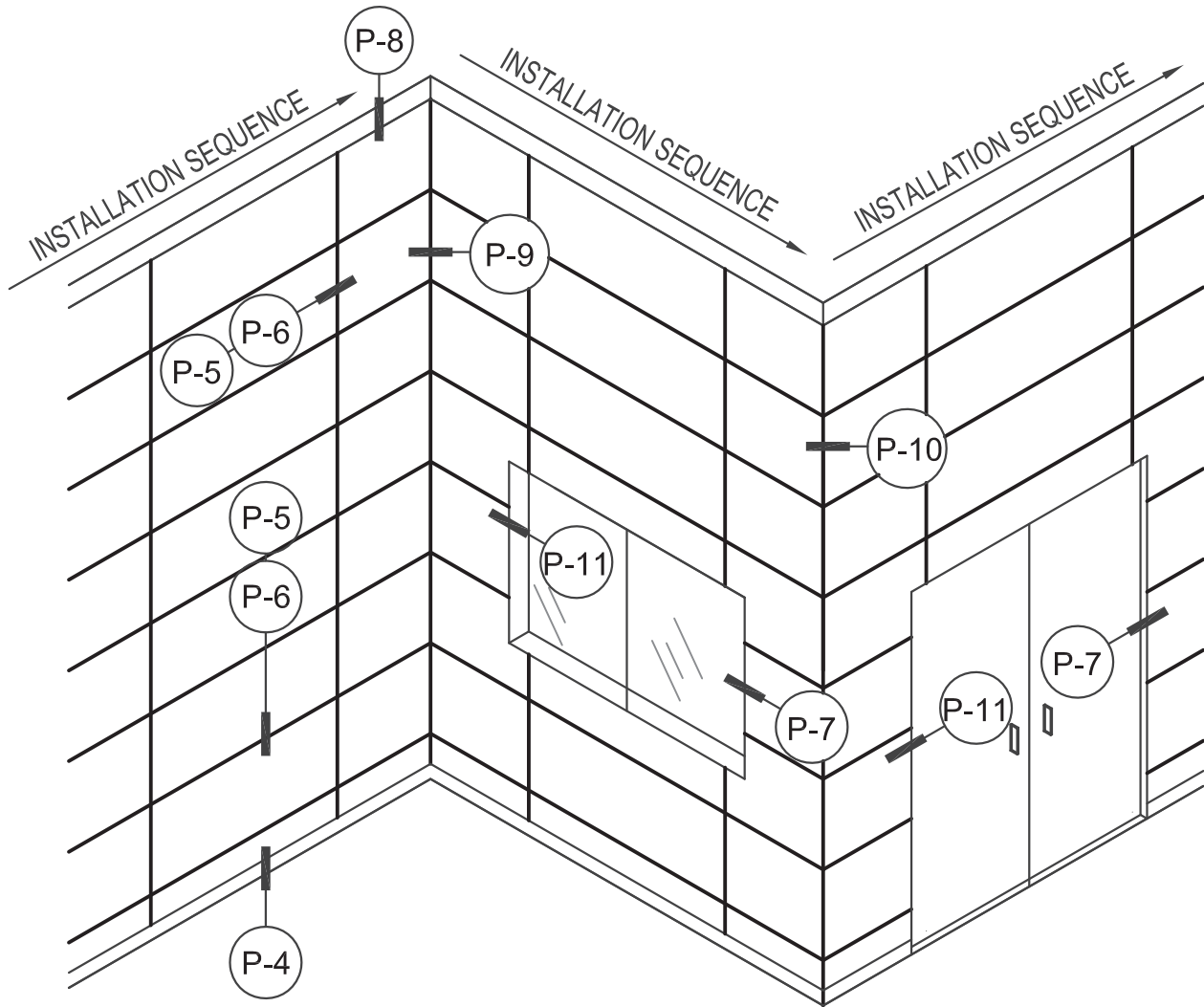
RAIN SCREEN PRESSURE EQUALIZED
DRY-JOINT SYSTEM



EAST COAST
METAL SYSTEMS

P.O. Box 217, 407 53RD STREET
BELLAIRE, OHIO 43906
(740) 676-2400
(740) 671-8760 Fax
www.ecmsinc.net
ecms@ecmsinc.net

EC-200 COMPOSITE PANEL SYSTEM



ABBREVIATIONS

ACM = ALUM. COMPOSITE MATERIAL
B.O. = BY OTHERS
O.A. = OVERALL PANEL
SYSTEM DIMENSION
P.D. = PANEL DIMENSION
P.H. = PANEL HEIGHT
P.W. = PANEL WIDTH

INDEX

(P-2): SYSTEM OVERVIEW
(P-3): EXTRUSIONS
(P-4) - (P-11): SYSTEM DETAILS

EC-200

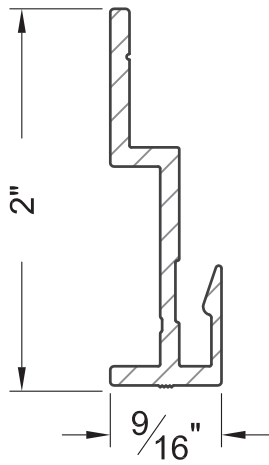
RAIN SCREEN PRESSURE EQUALIZED
DRY-JOINT SYSTEM



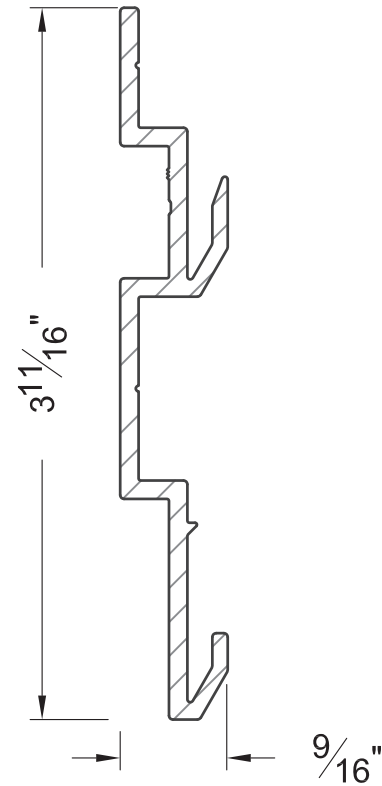
EAST COAST
METAL SYSTEMS

P.O. Box 217, 407 53RD STREET
BELLAIRE, OHIO 43906
(740) 676-2400
(740) 671-8760 Fax
www.ecmsinc.net
ecms@ecmsinc.net

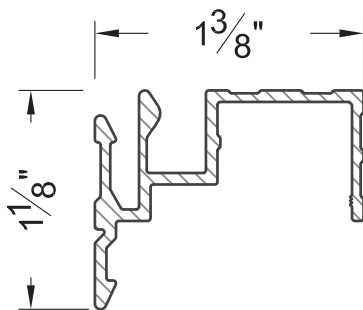
ATTACHMENT EXTRUSIONS



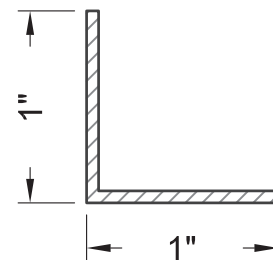
EC-201 EXTRUSION
(STARTER STRIP)



EC-203
BASE EXTRUSION



EC-202
PANEL EXTRUSION



EC-104 PANEL CLIP
CORNER REINFORCEMENT

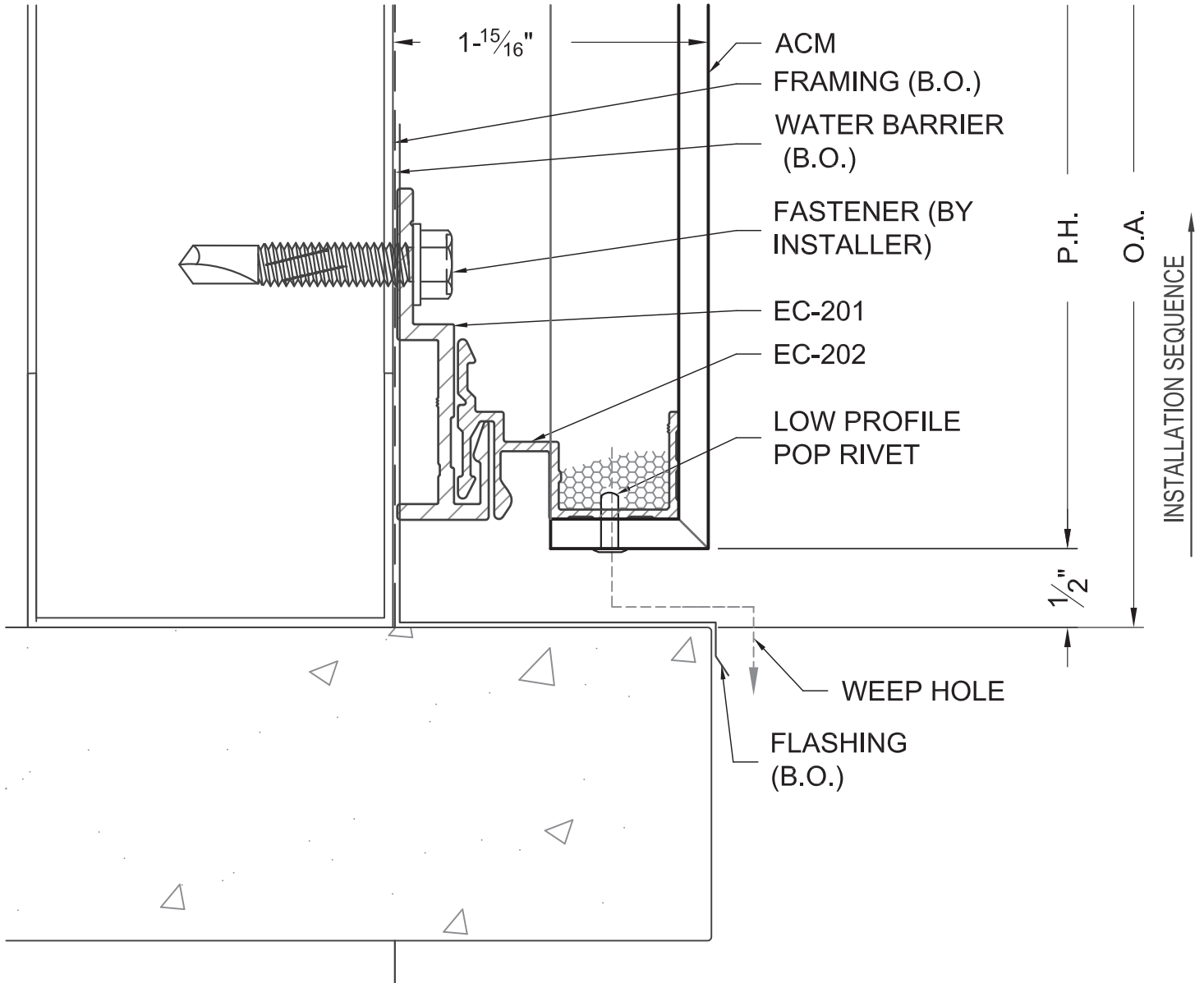
EC-200

RAIN SCREEN PRESSURE EQUALIZED
DRY-JOINT SYSTEM



EAST COAST
METAL SYSTEMS

P.O. Box 217, 407 53RD STREET
BELLAIRE, OHIO 43906
(740) 676-2400
(740) 671-8760 Fax
www.ecmsinc.net
ecms@ecmsinc.net



SILL CONDITION

1:1

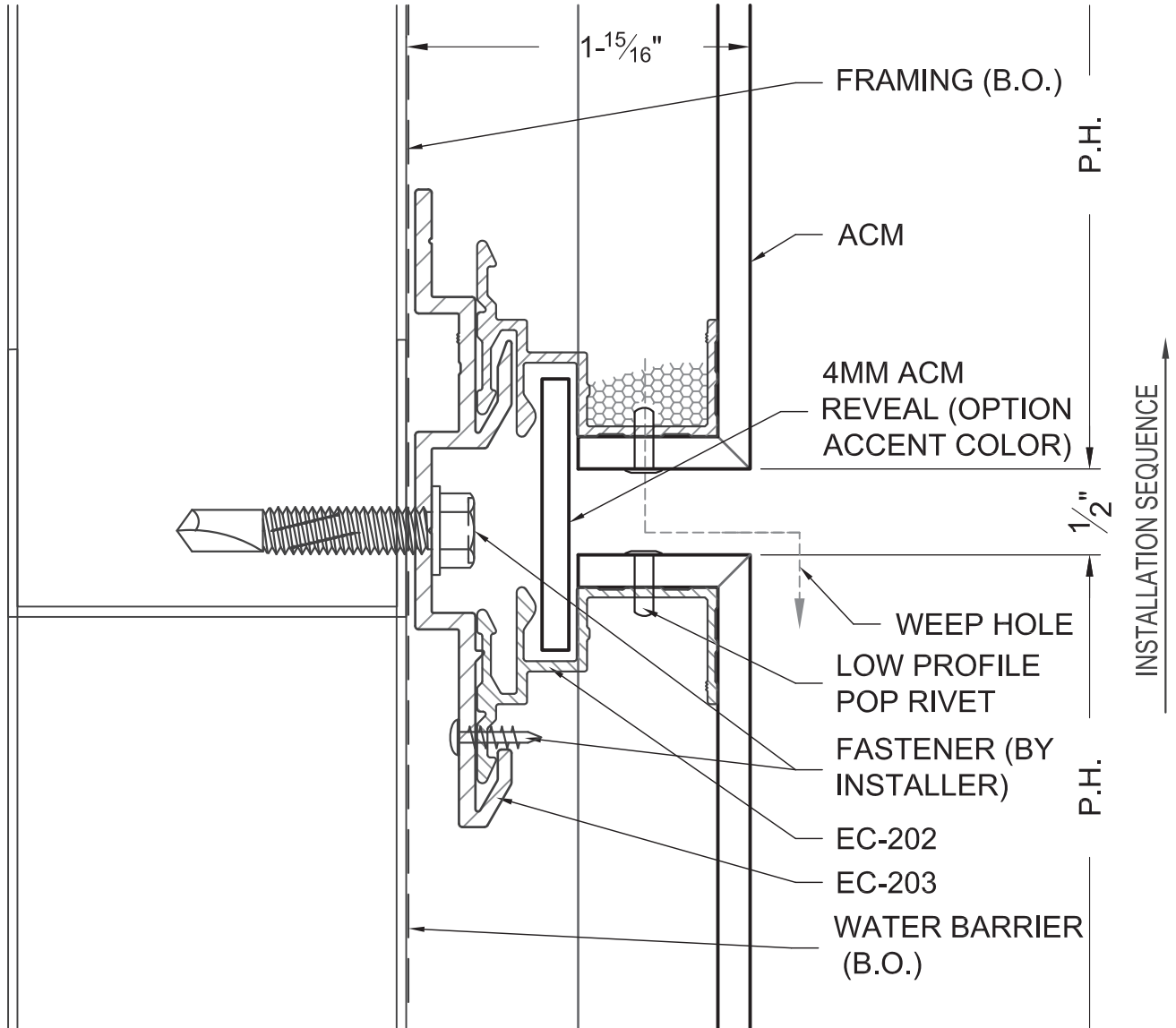
EC-200

RAIN SCREEN PRESSURE EQUALIZED
DRY-JOINT SYSTEM



EAST COAST
METAL SYSTEMS

P.O. Box 217, 407 53RD STREET
BELLAIRE, OHIO 43906
(740) 676-2400
(740) 671-8760 Fax
www.ecmsinc.net
ecms@ecmsinc.net



HORIZONTAL / VERTICAL JOINT- TYPICAL JOINT

1:1

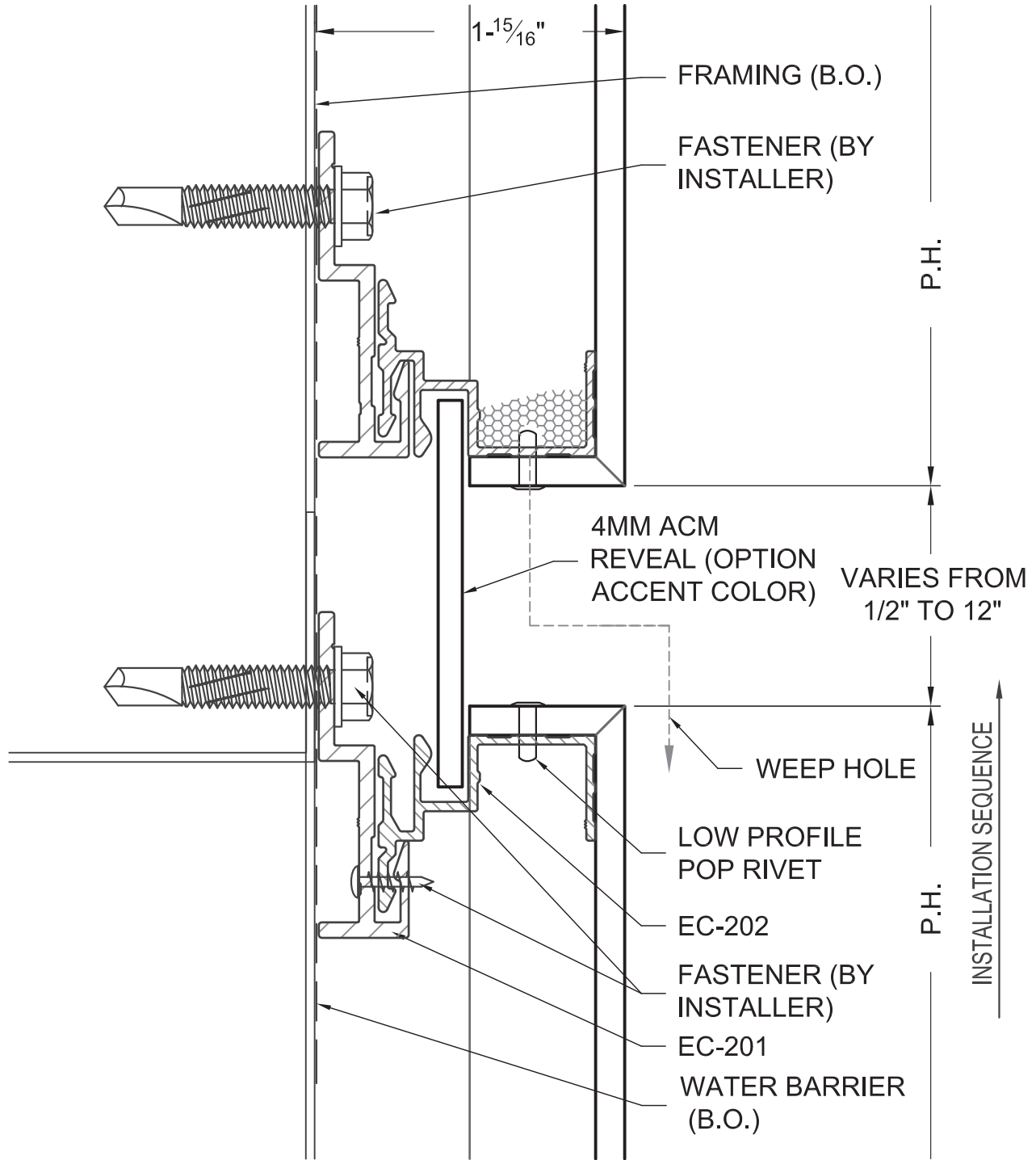
EC-200

RAIN SCREEN PRESSURE EQUALIZED
DRY-JOINT SYSTEM



EAST COAST
METAL SYSTEMS

P.O. Box 217, 407 53RD STREET
BELLAIRE, OHIO 43906
(740) 676-2400
(740) 671-8760 Fax
www.ecmsinc.net
ecms@ecmsinc.net



HORIZONTAL / VERTICAL JOINT- WIDE JOINT

1:1

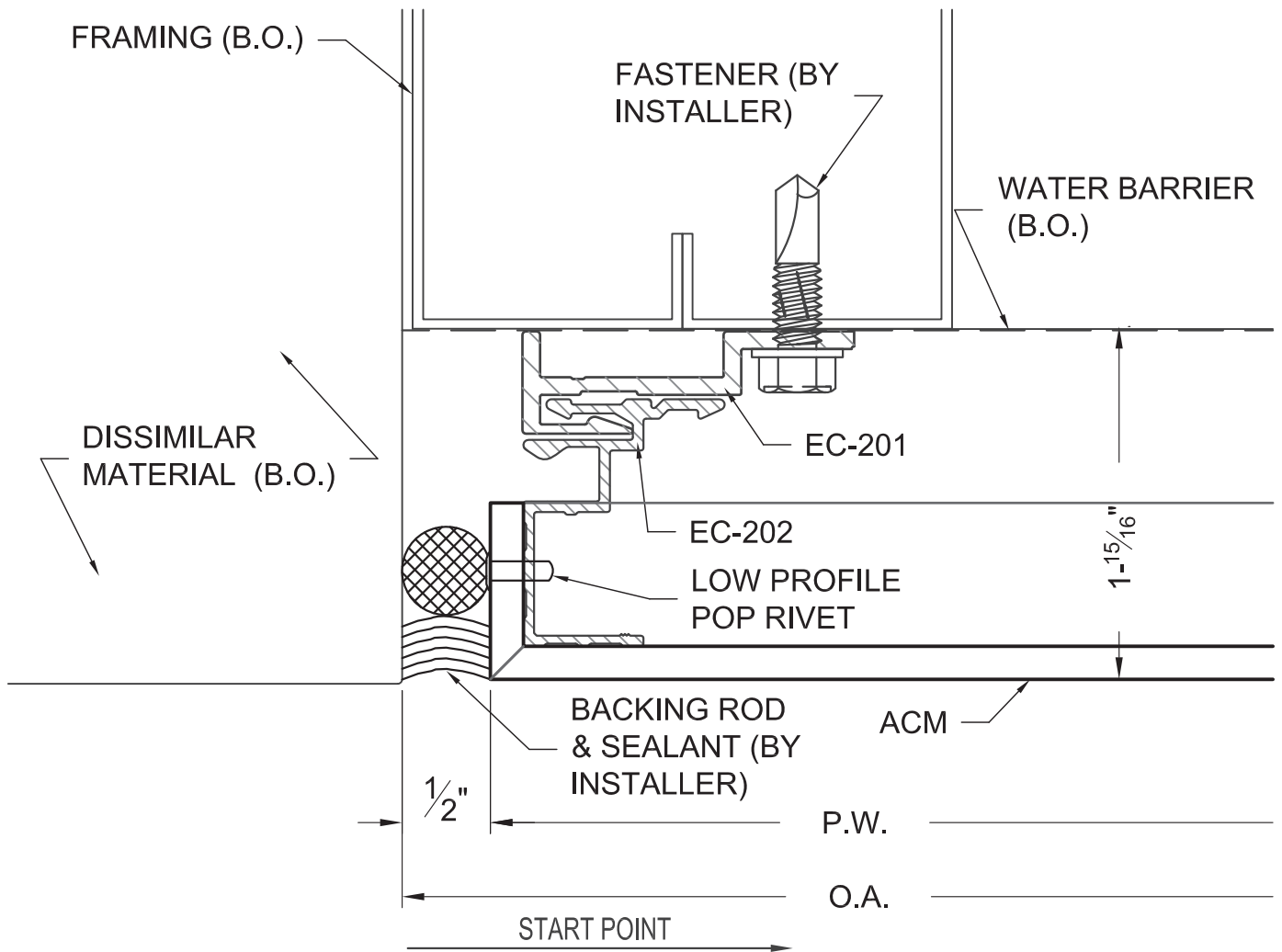
EC-200

RAIN SCREEN PRESSURE EQUALIZED
DRY-JOINT SYSTEM



EAST COAST
METAL SYSTEMS

P.O. Box 217, 407 53RD STREET
BELLAIRE, OHIO 43906
(740) 676-2400
(740) 671-8760 Fax
www.ecmsinc.net
ecms@ecmsinc.net



START CONDITION

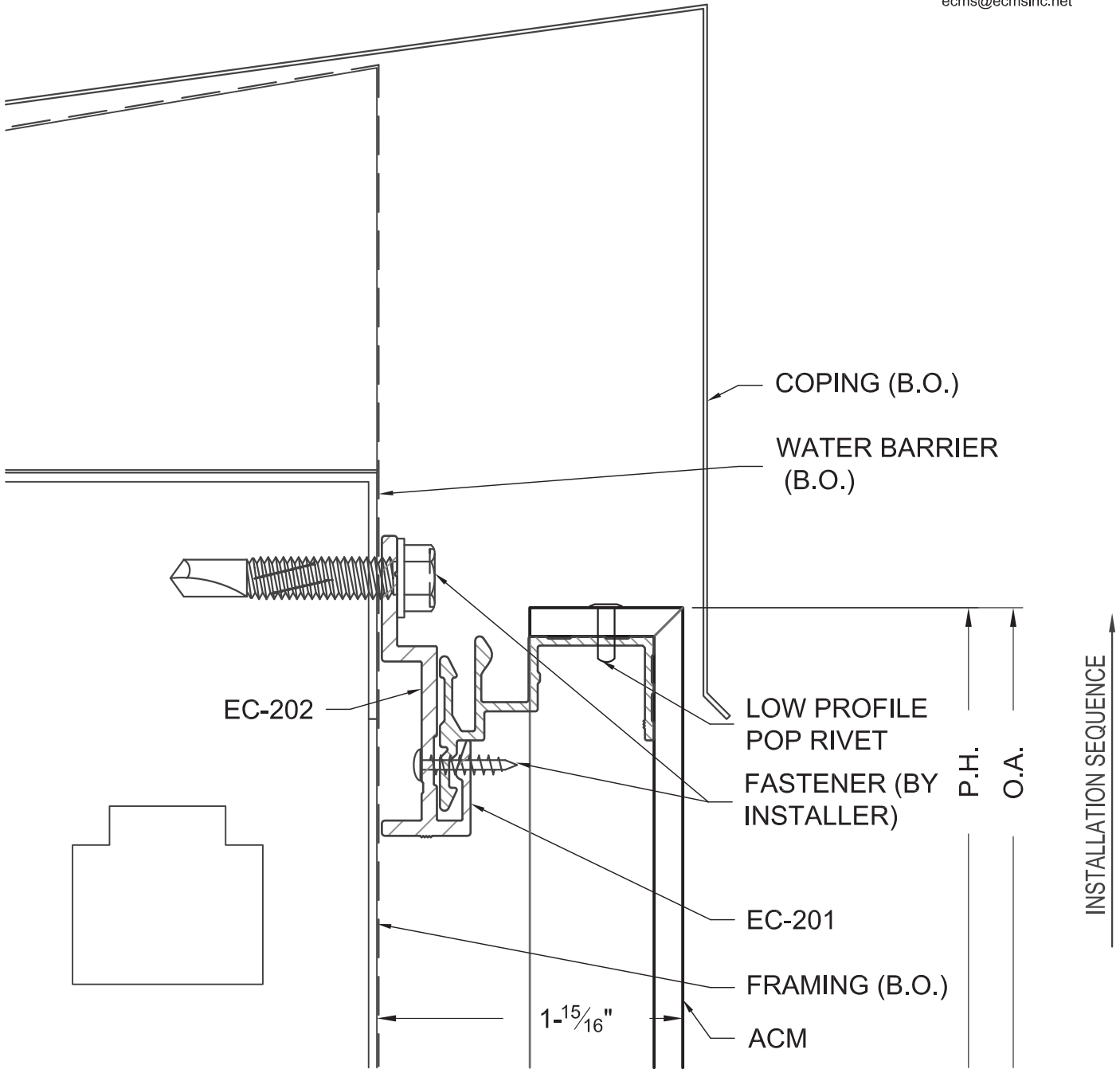
1:1

EC-200

RAIN SCREEN PRESSURE EQUALIZED
DRY-JOINT SYSTEM



P.O. Box 217, 407 53RD STREET
BELLAIRE, OHIO 43906
(740) 676-2400
(740) 671-8760 Fax
www.ecmsinc.net
ecms@ecmsinc.net

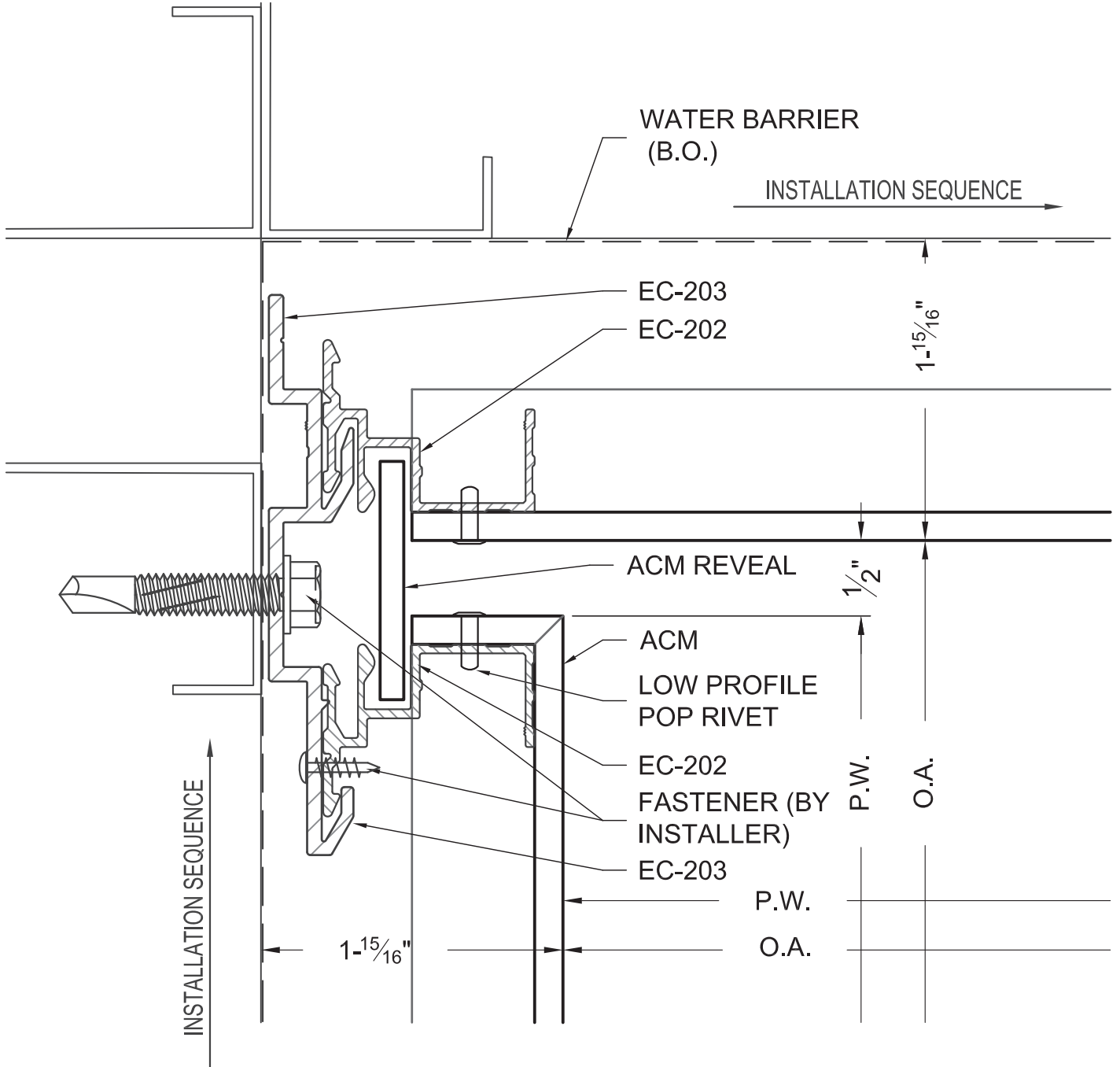


PARAPET CONDITION

1:1

EC-200

RAIN SCREEN PRESSURE EQUALIZED
DRY-JOINT SYSTEM



INSIDE CORNER CONDITION

1:1

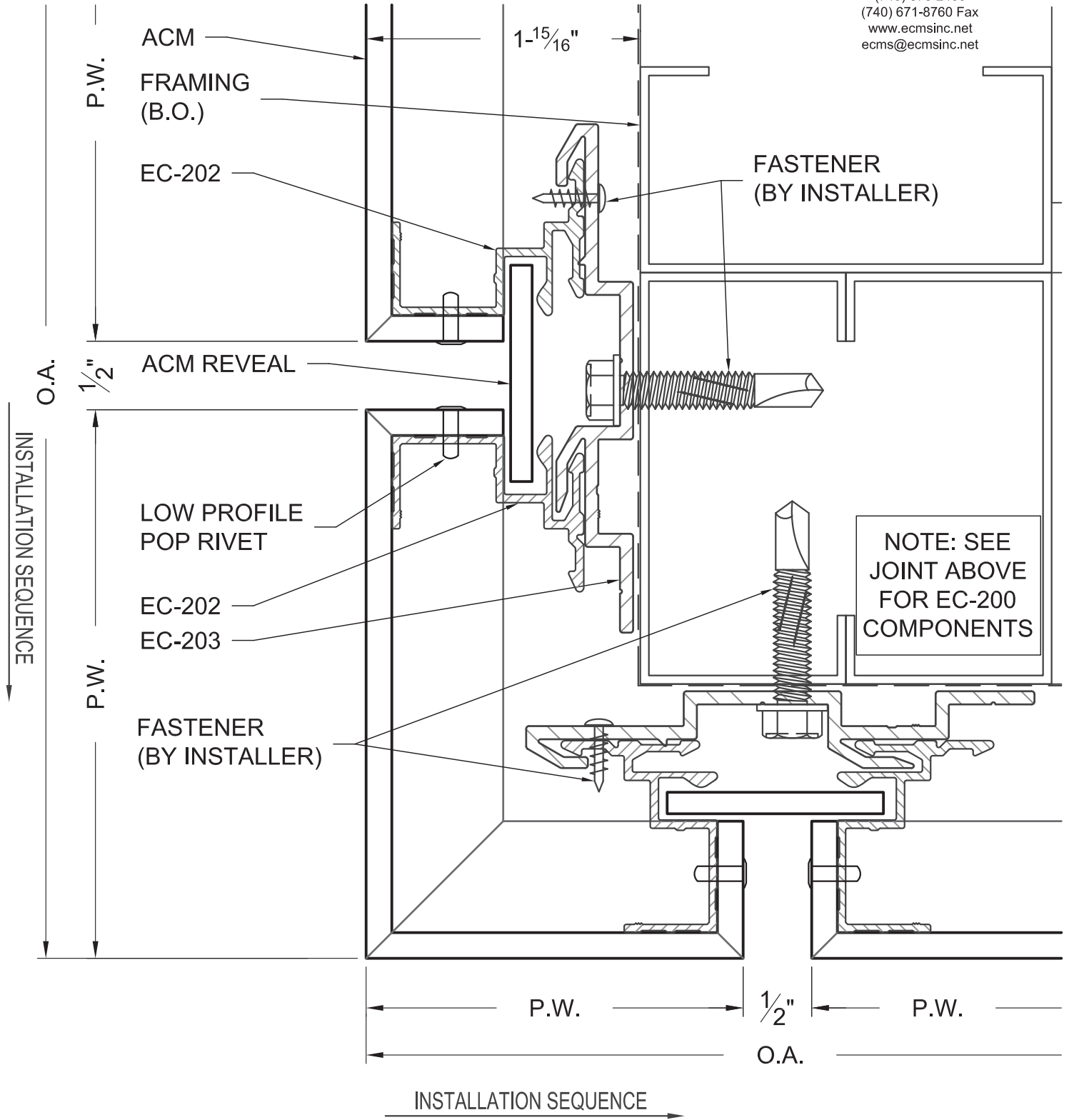
EC-200

RAIN SCREEN PRESSURE EQUALIZED
DRY-JOINT SYSTEM



EAST COAST
METAL SYSTEMS

P.O. Box 217, 407 53RD STREET
BELLAIRE, OHIO 43906
(740) 676-2400
(740) 671-8760 Fax
www.ecmsinc.net
ecms@ecmsinc.net



OUTSIDE CORNER

1:1

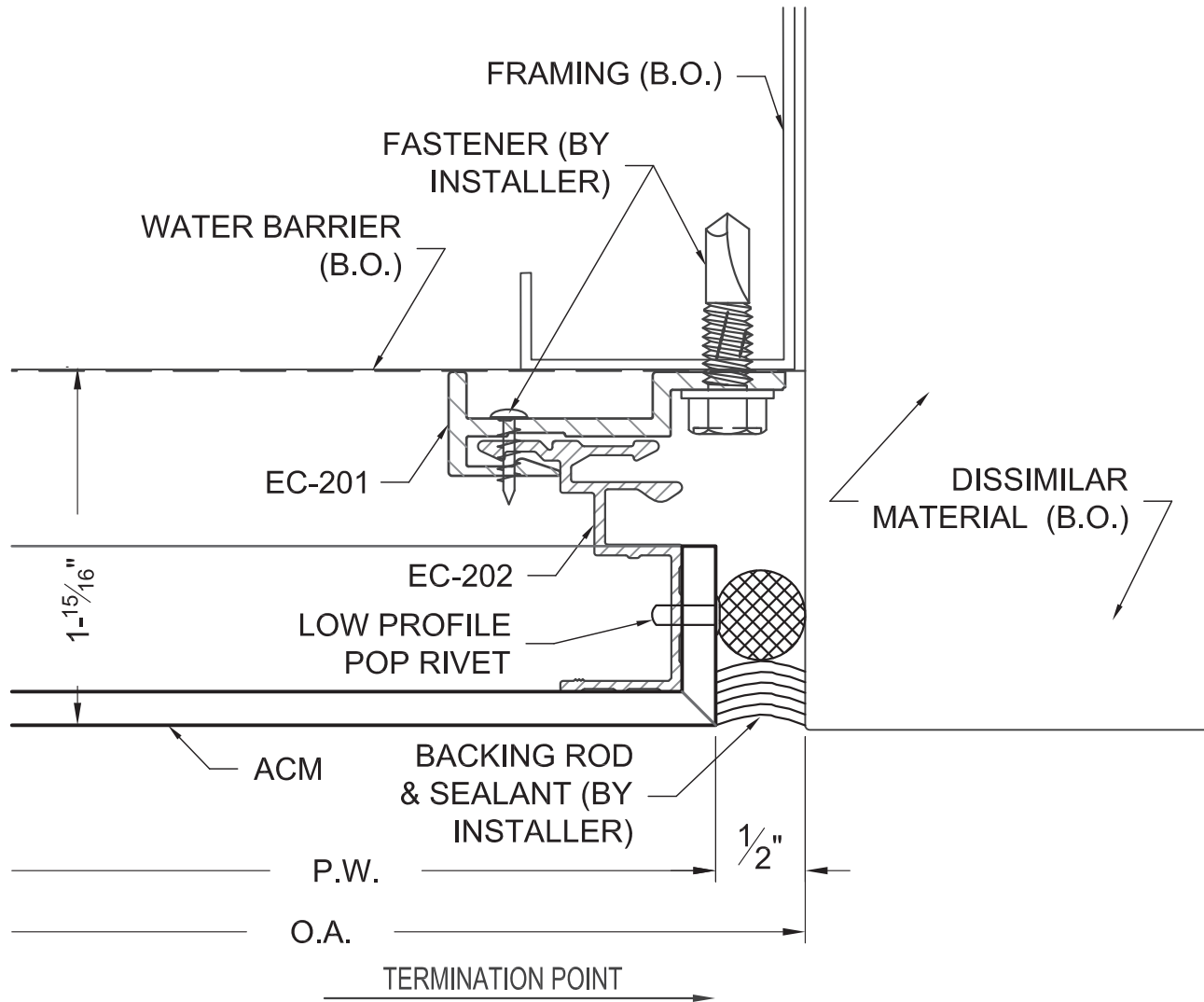
EC-200

RAIN SCREEN PRESSURE EQUALIZED
DRY-JOINT SYSTEM



EAST COAST
METAL SYSTEMS

P.O. Box 217, 407 53RD STREET
BELLAIRE, OHIO 43906
(740) 676-2400
(740) 671-8760 Fax
www.ecmsinc.net
ecms@ecmsinc.net



TERMINATION CONDITION

1:1