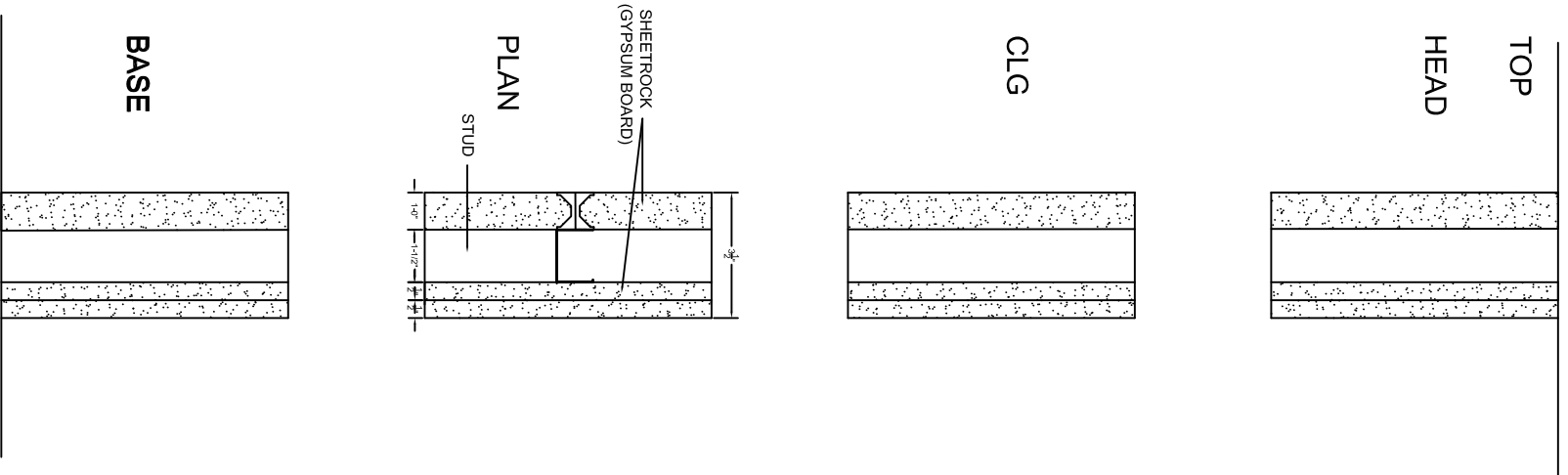
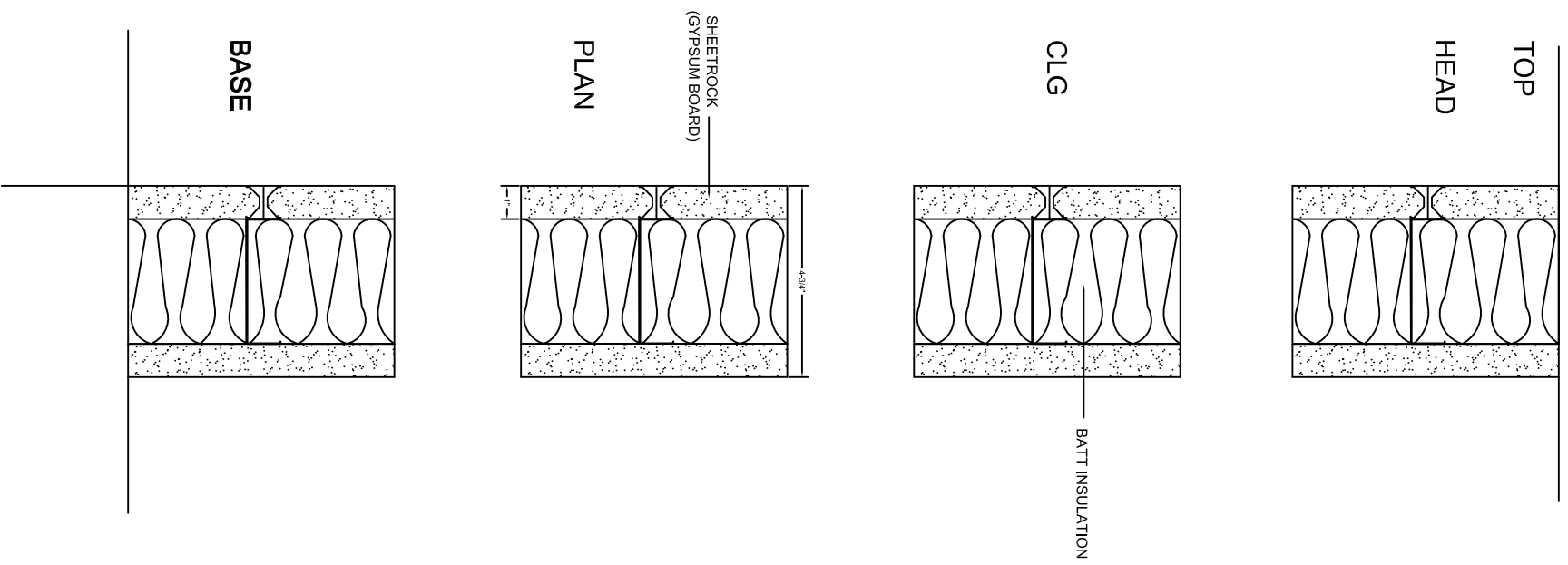


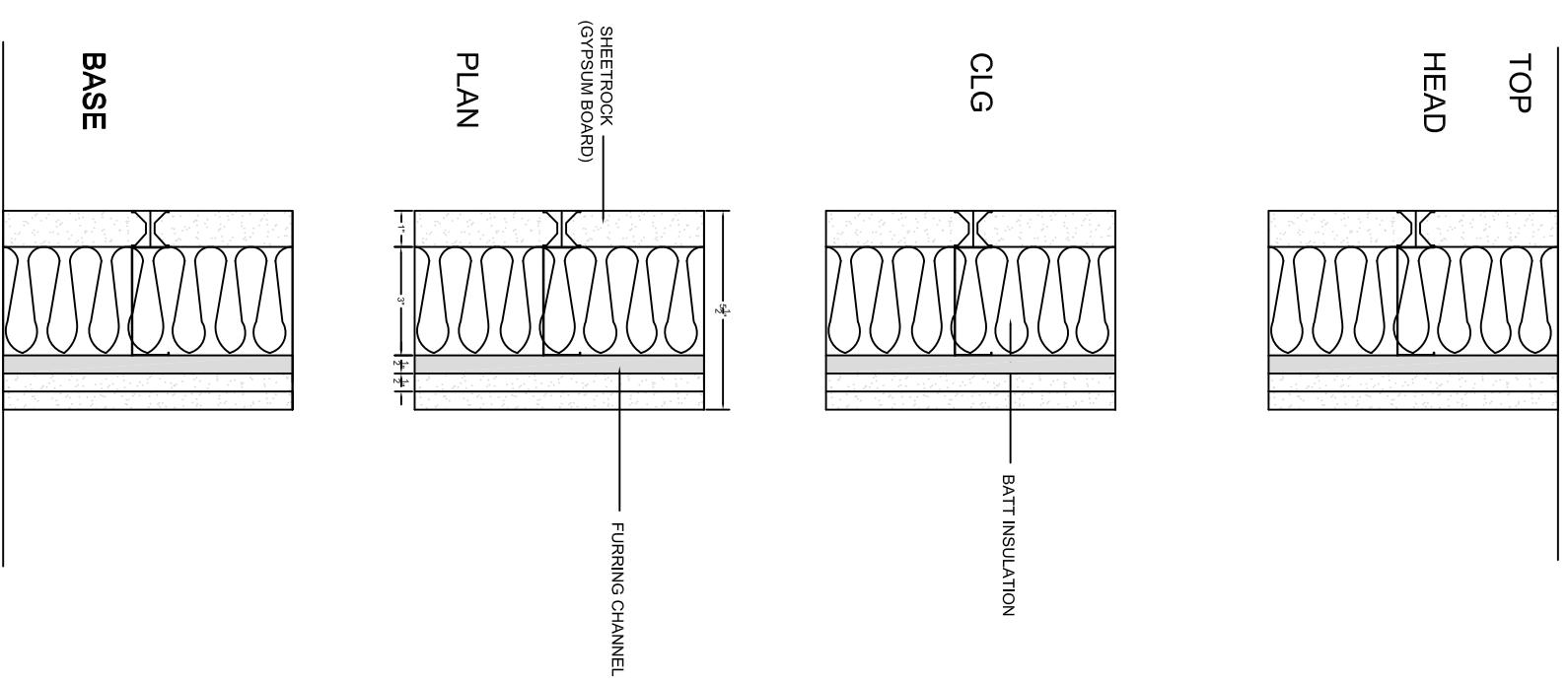
SHAFT WALL WITH STEEL STUD
(NON-LOADBEARING) TWO HOUR FIRE
RATING : gypsum board applied vertically,
Steel Studs - "C"-shaped studs, 2-1/2 in.
wide by 1-1/2 in. deep, min 25 gauge steel
spaced max @ 24 in.



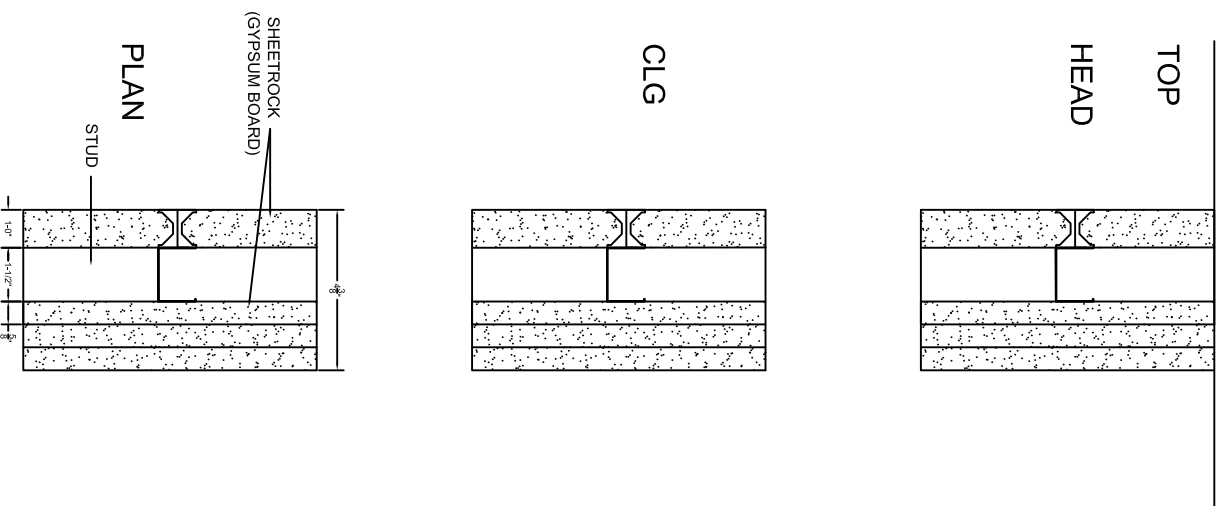
SHAFT WALL WITH STEEL STUD
(NON-LOADBEARING) "C"-shaped
studs, 4 in. wide by 1-1/2 in. deep, min 25
gauge steel spaced max @ 24", TWO
HOUR FIRE RATING : GYPSUM BOARD
APPLIED VERTICALLY; BATTS AND
BLANKETS - 3" MINERAL WOOL BATT
INSULATION.



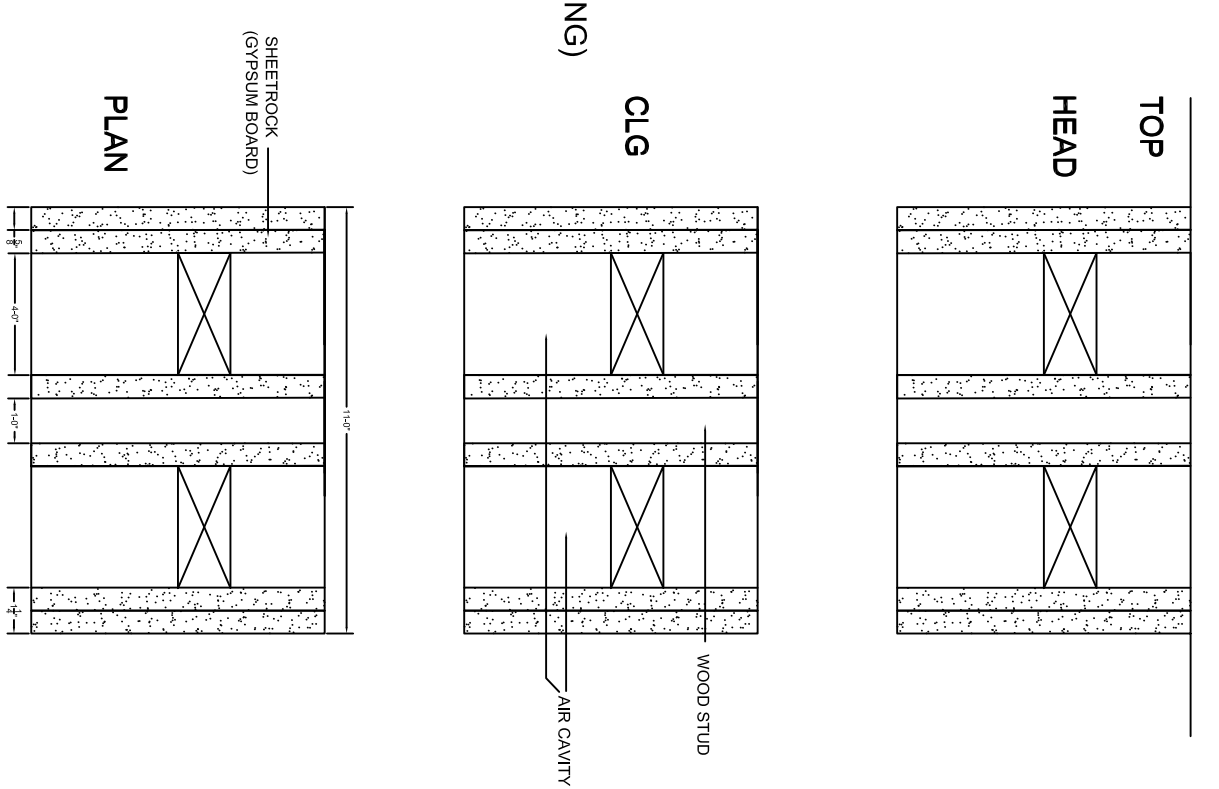
SHAFT WALL WITH STEEL STUD
(NON-LOADBEARING) "C"-shaped
studs, 4 in. wide by 1-1/2 in. deep, min 25
gauge steel spaced max @ 24", TWO
HOUR FIRE RATING : GYPSUM BOARD
APPLIED VERTICALLY; BATTS AND
BLANKETS - 3" MINERAL WOOL BATT
INSULATION (1/2 in. deep resilient turning
channels; min 25 gauge
corrosion-protected steel, spaced
vertically a max of 24" OC).



SHAFT WALL WITH STEEL STUD
(NON-LOADBEARING) 3 HOUR FIRE
RATING : GYPSUM BOARD APPLIED
VERTICALLY, "C"-shaped studs,
2-1/2 " wide by 1-1/2" deep, min 25 gauge
steel spaced max @ 24".



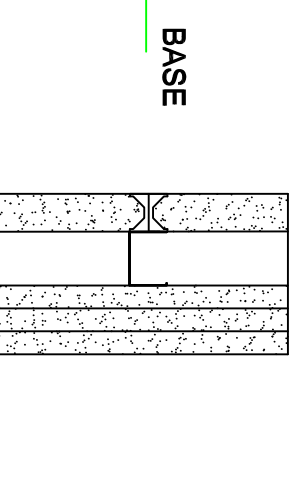
CHASE WALL WITH WOOD STUD (LOADBEARING)
AND TWO HOUR FIRE RATING.



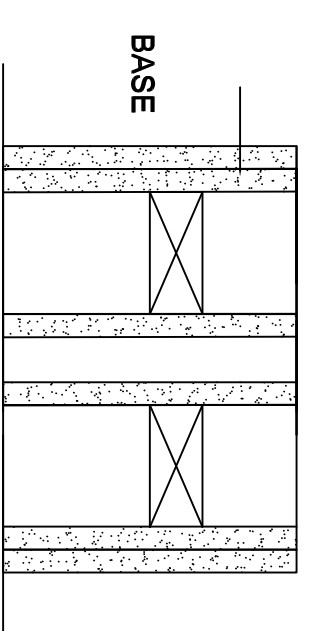
1 4 WALL TYPES

A-100.00

BASE



BASE



PROJECT:
ARCH 1230
CITYTECH / PROFESSOR KING / 2014 SPRING

DWG TITLE:
ASSIGNMENT 4
4 WALL TYPES: 2 OF 2

DATE: 2014 02/18
PROJECT NO: 1230_A
DRAWING BY: SILVANA MASTROIUA
CHK BY: PK

DWG NO: **A-100.00**
PAGE: 1 of 1