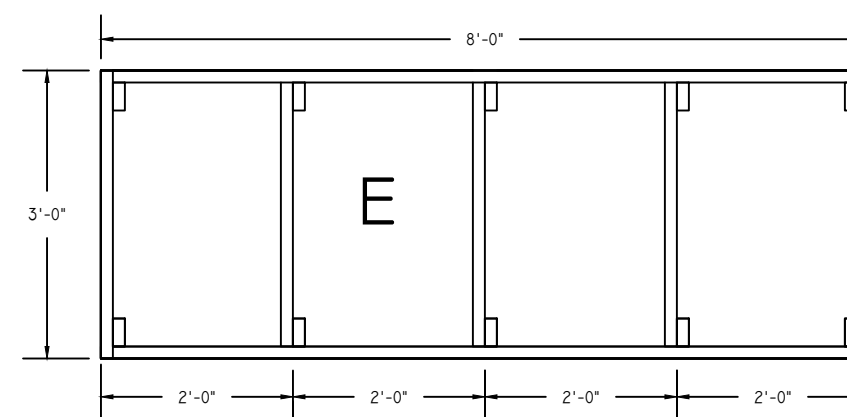
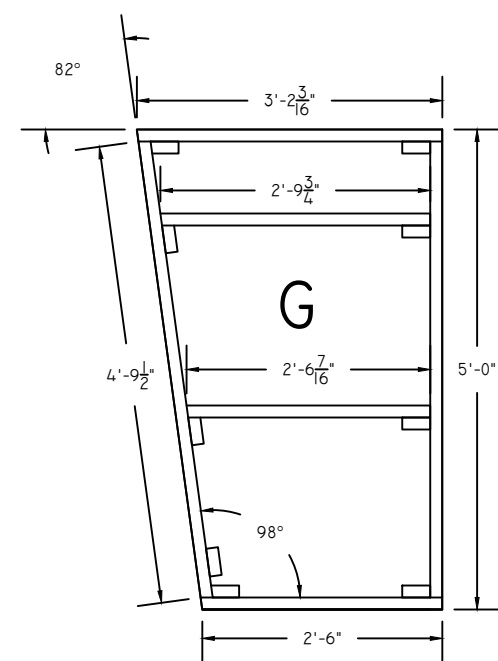
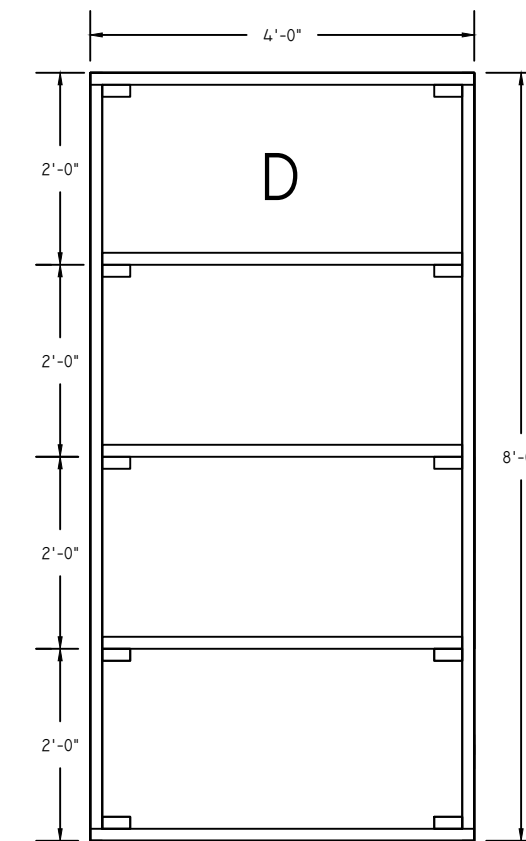
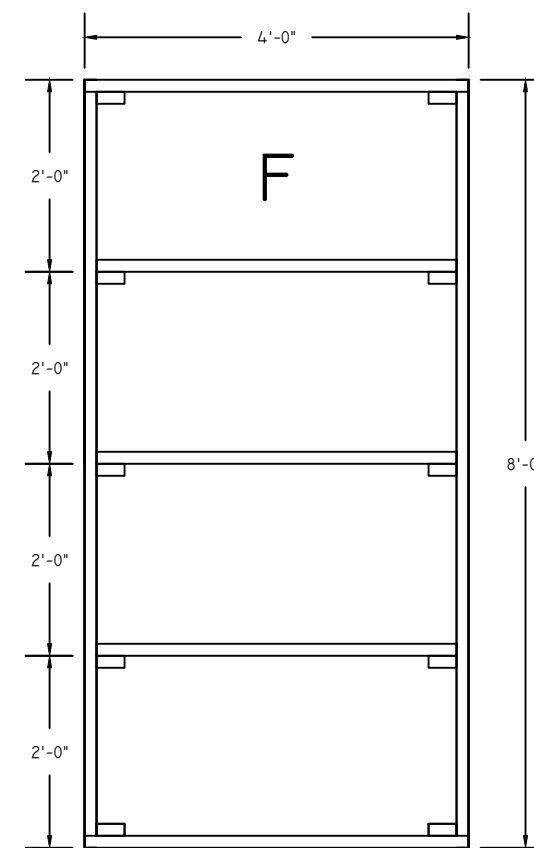
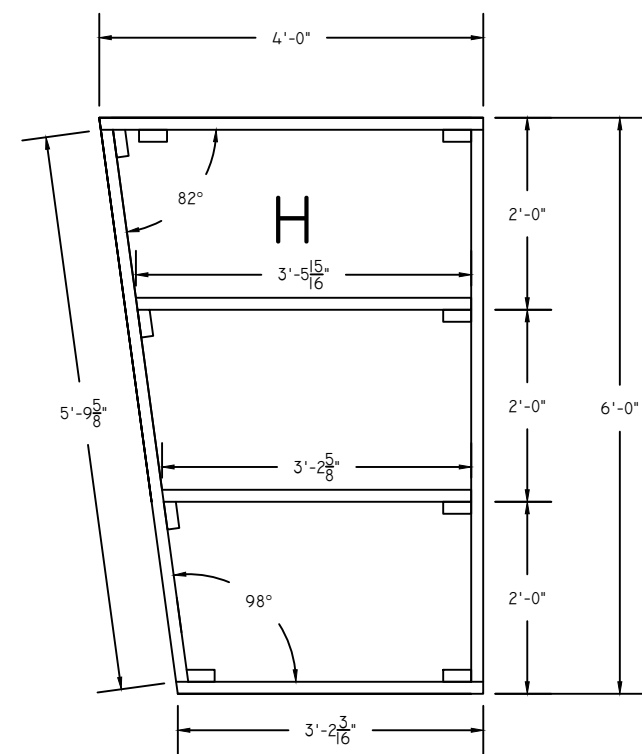


NOTES:  
 LUMBER 2 X 4 FOR FRAMES AND LEGS PINE GRADE 2  
 LUMBER 1 X 3 PINE GRADE 2  
 HANDRAIL DYKES 6010  
 BALUSTER DYKES T2005  
 $\frac{3}{4}$  PLYWOOD A/C  
 $\frac{1}{4}$  PLYWOOD A  
 $\frac{1}{4}$  MASONITE - TEMPERED ON THE TOP FOR PAINTING SURFACE.

SPECIAL NOTE:

\* THE PLATFORMS "G & H" HAVE 8 SPECIAL CUT LEGS LOCATED IN THE DIAGONAL SIDE BECAUSE IT GIVES MORE STABILITY TO THE PLATFORMS. SEE PLATE No. PE2 FOR CUTTING DETAILS.



NYC COLLEGE OF TECHNOLOGY	
ENT 2210 - ADV SCENERY CONST. PROF. McCullough	PLATE NO.
PLATFORM ESTIMATE	PE6
SCALE: 1/2" = 1'-0"	
DATE: 12/19/18	
DRAWN BY: SANDRA P. MEJIAS VEGA	OF: 1