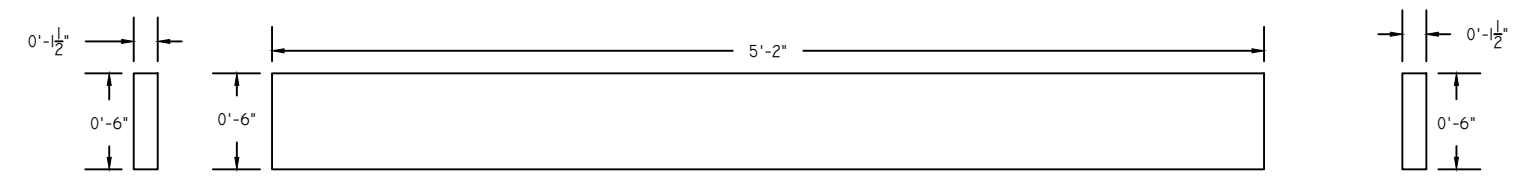
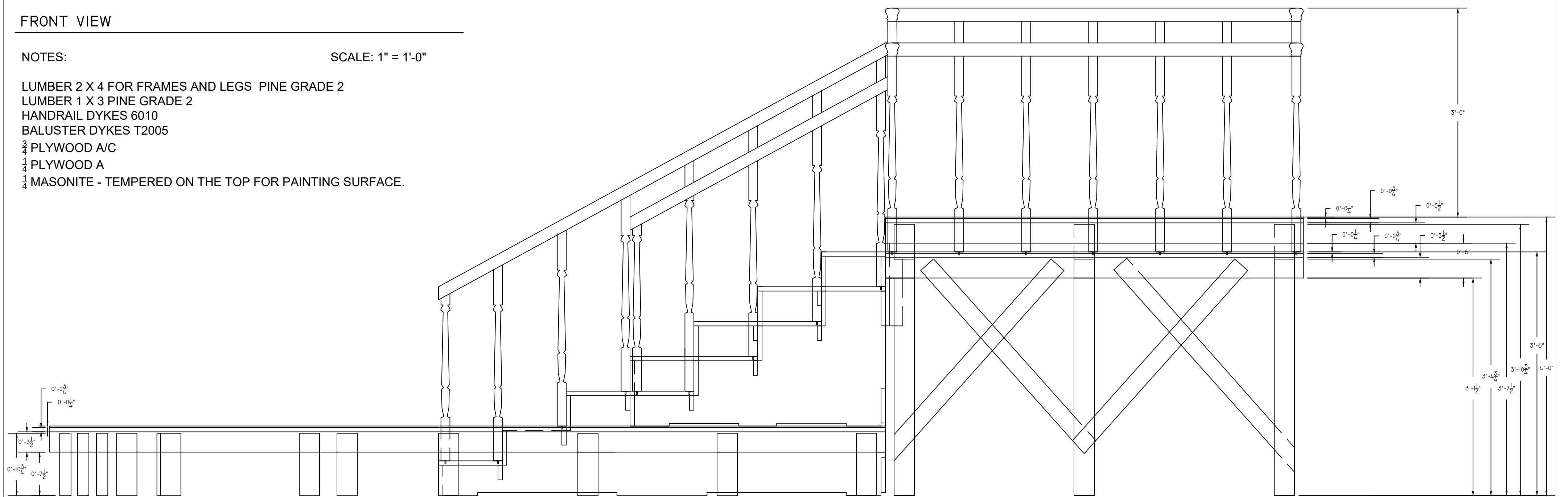


FRONT VIEW

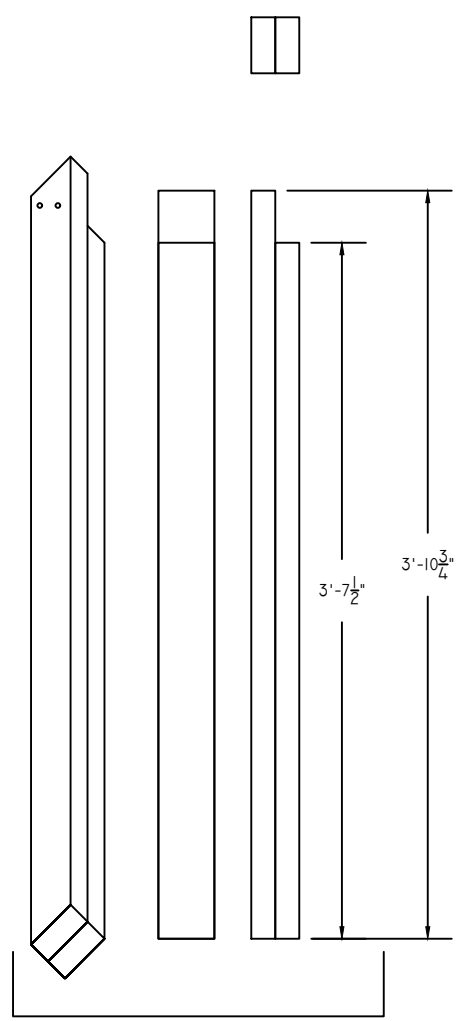
NOTES:

SCALE: 1" = 1'-0"

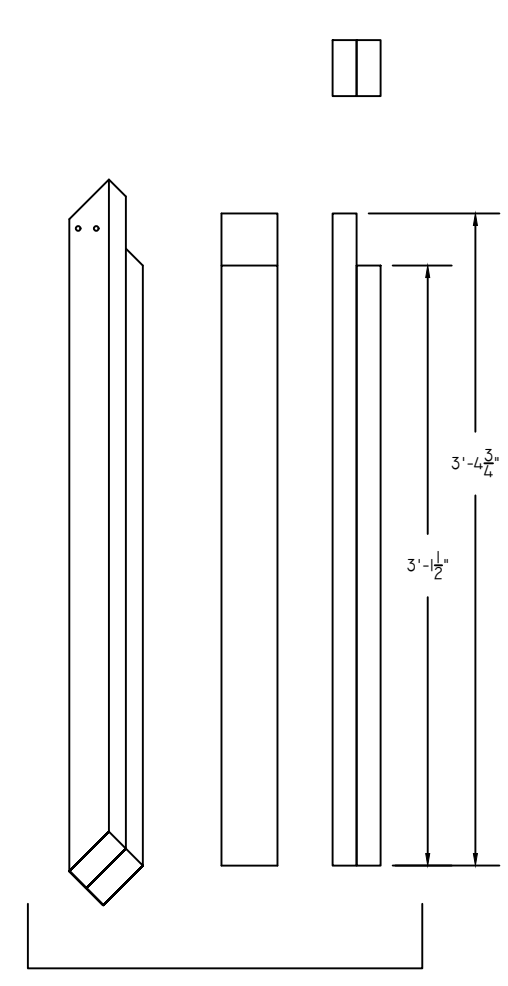
- LUMBER 2 X 4 FOR FRAMES AND LEGS PINE GRADE 2
- LUMBER 1 X 3 PINE GRADE 2
- HANDRAIL DYKES 6010
- BALUSTER DYKES T2005
- $\frac{3}{4}$ PLYWOOD A/C
- $\frac{1}{4}$ PLYWOOD A
- $\frac{1}{4}$ MASONITE - TEMPERED ON THE TOP FOR PAINTING SURFACE.



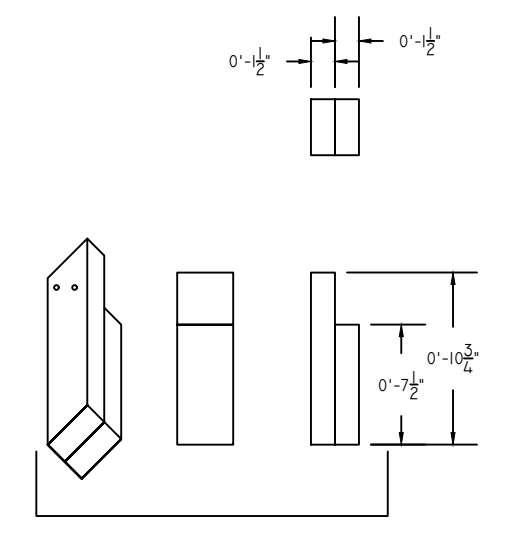
$\frac{3}{4}$ PLYWOOD PIECES TO COVER THE GAP BETWEEN TWO PLATFORMS.



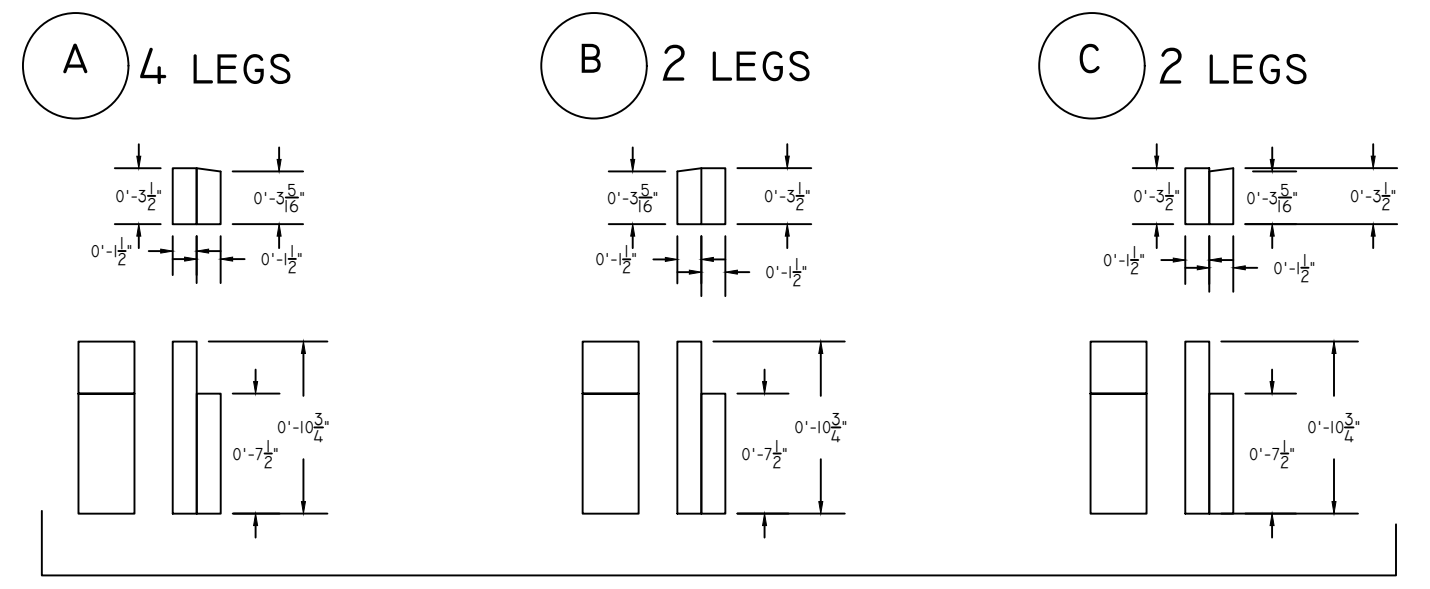
STANDARS LEGS FOR PLATFORMS A



STANDARS LEGS FOR PLATFORMS B1, B2 AND C



STANDAR LEGS FOR PLATFORMS D, E, F, G & H



SPECIAL LEGS FOR PLATFORMS G & H

NYC COLLEGE OF TECHNOLOGY	
ENT 2210 - ADV SCENERY CONST.	PLATE NO.
PROF. McCullough	PE2
PLATFORM ESTIMATE	
FRONT VIEW & LEGS	
SCALE: 1" = 1'-0"	OF: 1
DATE: 12/19/18	
DRAWN BY: SANDRA P. MEJIAS VEGA	