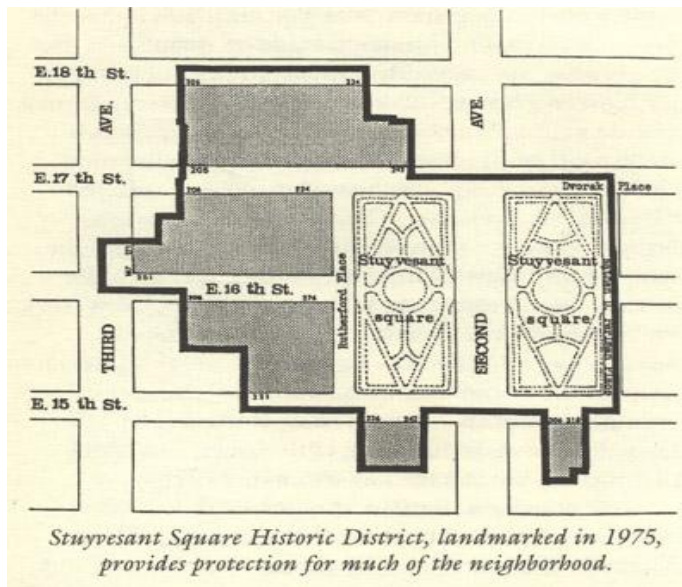


# *Stuyvesant Square:*

## *Fact Finding-Exploration*



**Ahmed Mohamed**

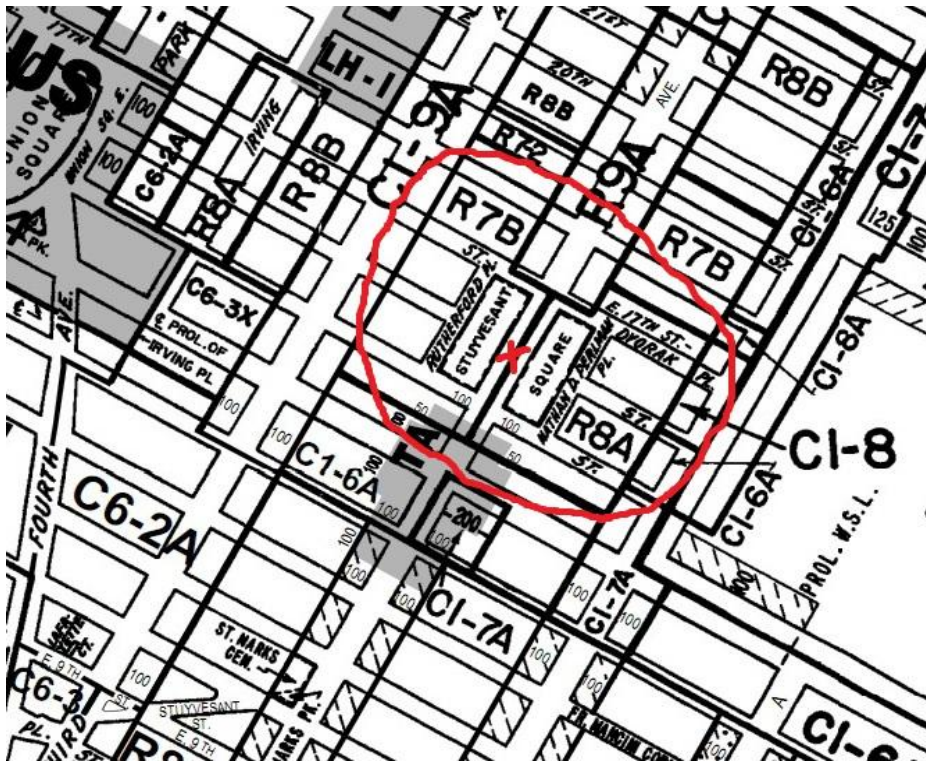
Group Member: **Nicole Montenegro**  
and **Sean Patrick Mercado**

Site Planning Arch 1250

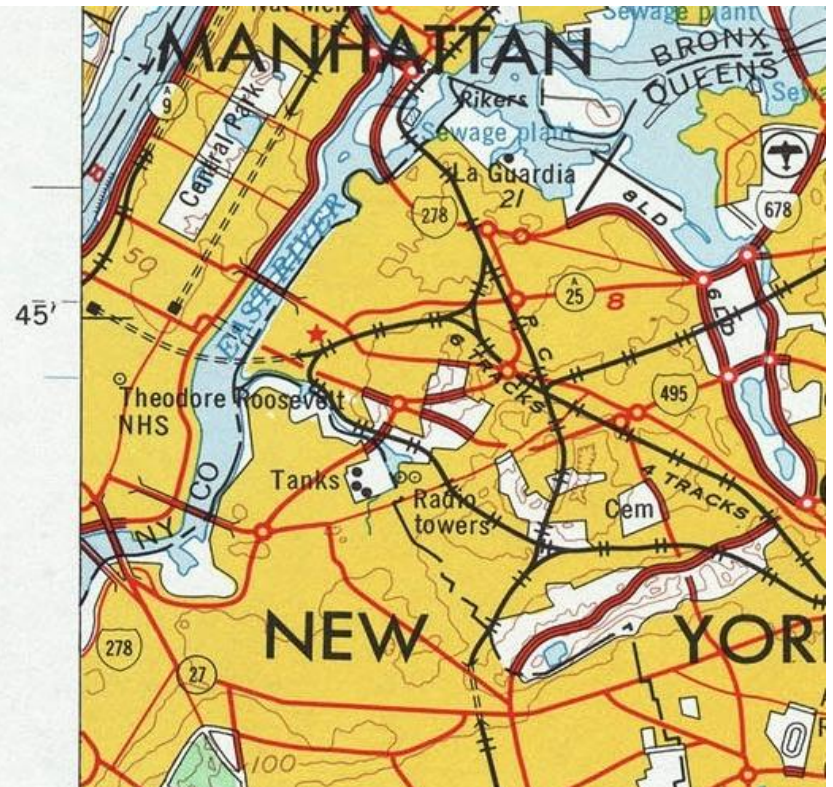
**Prof. Calhoun**

## Location:

- Stuyvesant Square Park is located between the 15<sup>th</sup> and 17<sup>th</sup> streets on 2<sup>nd</sup> avenue eastern Manhattan, NY.
- A historical restricted zoning district between the districts (R8A and R7B).
- The area of Stuyvesant Square is about 3.93 acres which is equal 171190 ft<sup>2</sup>.



Plan view of area Stuyvesant Square occupies



An elevation of 45' above sea level.

This shows the zoning district of the Stuyvesant Square as well as the streets that surrounds it and some neighboring buildings

Towards Union square (5min walk)

Subway:  
L, 4, 5 & 6

Can be taken @ Union Square

This is a one way street

Bus route: Bus 14D and M15



Pedestrian walk way

Pedestrian walk way which connect the parks

Pedestrian walk way

# Traveling

First time is always the hardest. I live in Long Island, New York and its not that easy to get to this park. Here are some traveling tips to get to Stuyvesant Square

## By Public transportation

- Take the closest LIRR that goes to Penn. Station, You can also take the other train that goes to Atlantic Terminal (Brooklyn) but you have to transfer from Jamaica
- Take an **A, C** downtown, Subway on 8<sup>th</sup> avenue to 14<sup>th</sup> street
- Take an L Subway to Union Square
- Remember to exit near East 15<sup>th</sup> Street
- Since this street is a one way **street just walk straight opposite to the direction of the cars for about 5-7min**
- Arrive at the south west of Stuyvesant Square

\*If you live in the area of Manhattan near Union Square or Stuyvesant are that the bus route **14D** and **M15** would be much accessible and easier.

## From New York City College of Technology, Brooklyn

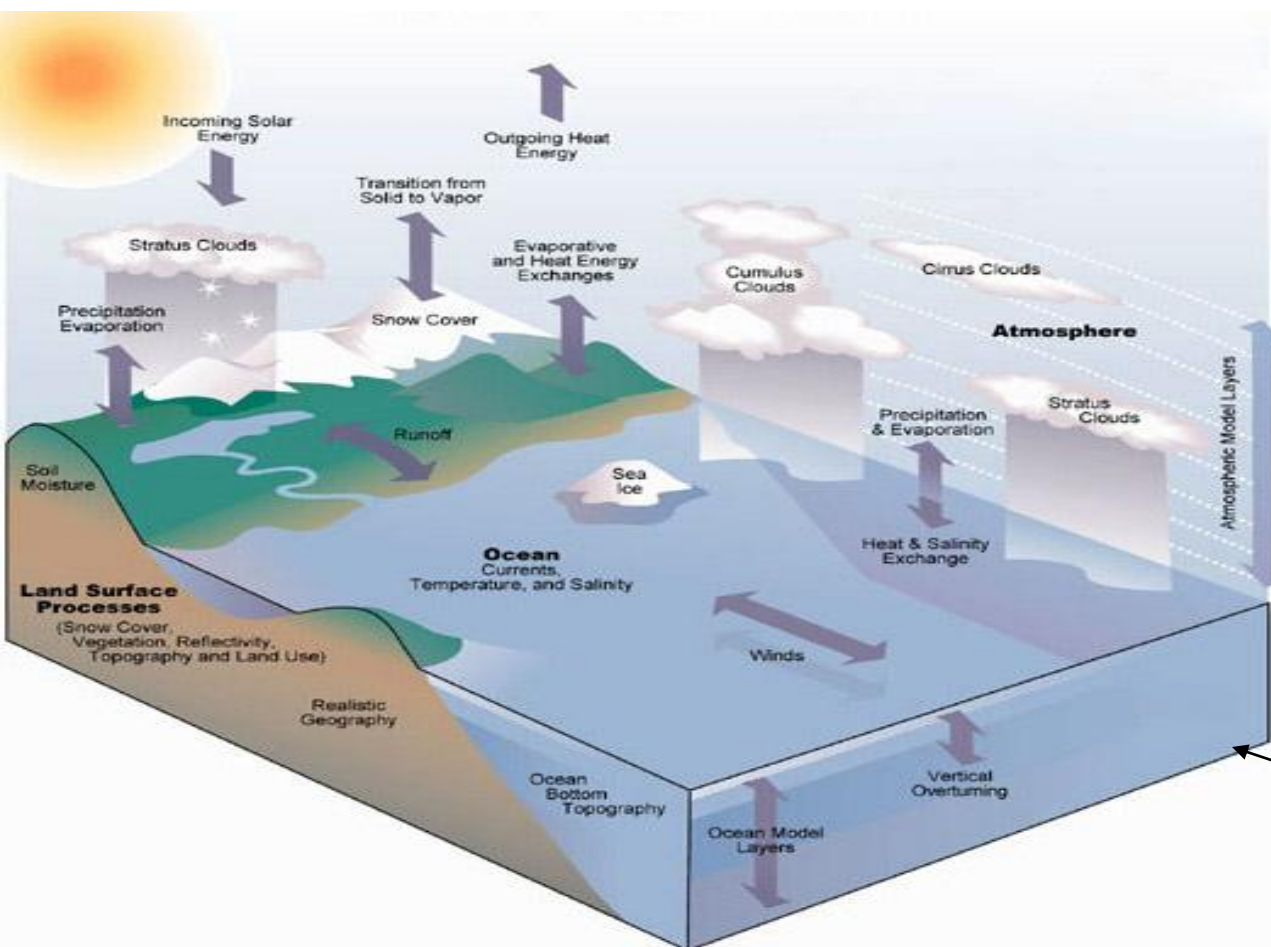
- Take a subway **A,C, F** uptown and exit at Fulton
- Transfer to **4,5,6** train at Fulton without exiting the subway
- Exit at Union Square near the East 15<sup>th</sup> Square
- Walk straight opposite to the cars traveling the E 15 street( one way) for about 5-7min
- Arrive at the south west of **Stuyvesant Square**

## The climates:

Macro-climate: a mix of cool and cold temperature region affected by the middle position between the north cold side and the tropical south side.

Meso-climate: a cool temperature region.

Micro-climate: the sites high elevation gives it a cool temperate climate. In addition, many elements such as the vegetative ground coverage, which retains a cooling moister precipitation, the fountains which help keep the temperature lower in summer and the vegetative coverage protect the soil from the freezing temperature and cold wind in winter. The vegetation will also prevents rapid run off during heavy rain fall.



Climate analysis

# Buildings near Stuyvesant Square

## St. George's Episcopal Church:

- Located 209 East 16th Street at Rutherford Place, on Stuyvesant Square Park in Manhattan, New York City. (Refer to Map on pg. 3)

Charles Otto Blesch designed the exterior of the church, while Leopold Eidlit designs the interior of the church.

### Romanesque Revival

This features shows the Romanesque essence of this structure.

- Columns
- Arches
- Long, large open window



This church is one of New York City landmark, designed in 1967, and was named a National Historic Landmark in 1976.

The exterior of the church is built mostly in bricks

Half oval, Arch type stairs makes the flow goes in any direction giving it a “welcoming” sense.

**St. Mary's Byzantine Catholic Church:**



# Utilities - Water Control, Electrical, Drainage and Materials Underfoot



These two are examples of Fire Hydrants surrounding the whole are of Stuyvesant Square

- they can be used by fire fighter incase of a fire for a nearby building or the park itself
- The top one is located at 15<sup>th</sup> street and the bottom one I think is located at the 2<sup>nd</sup> avenue



This is the fountain located in the park ( between Ruther Ford Pl and 2<sup>nd</sup> avenue)

- Drinking water fountain
- Dirty, looks abandoned – I don't see anyone wanting to drink on this fountain

This is located near the water fountain – the concrete box protects the plumbing connection, this might be where the plumber cleans and check the water system for the fountain

-tube sticking out looks like a valve



This is one of the Fountain located in the center of each park

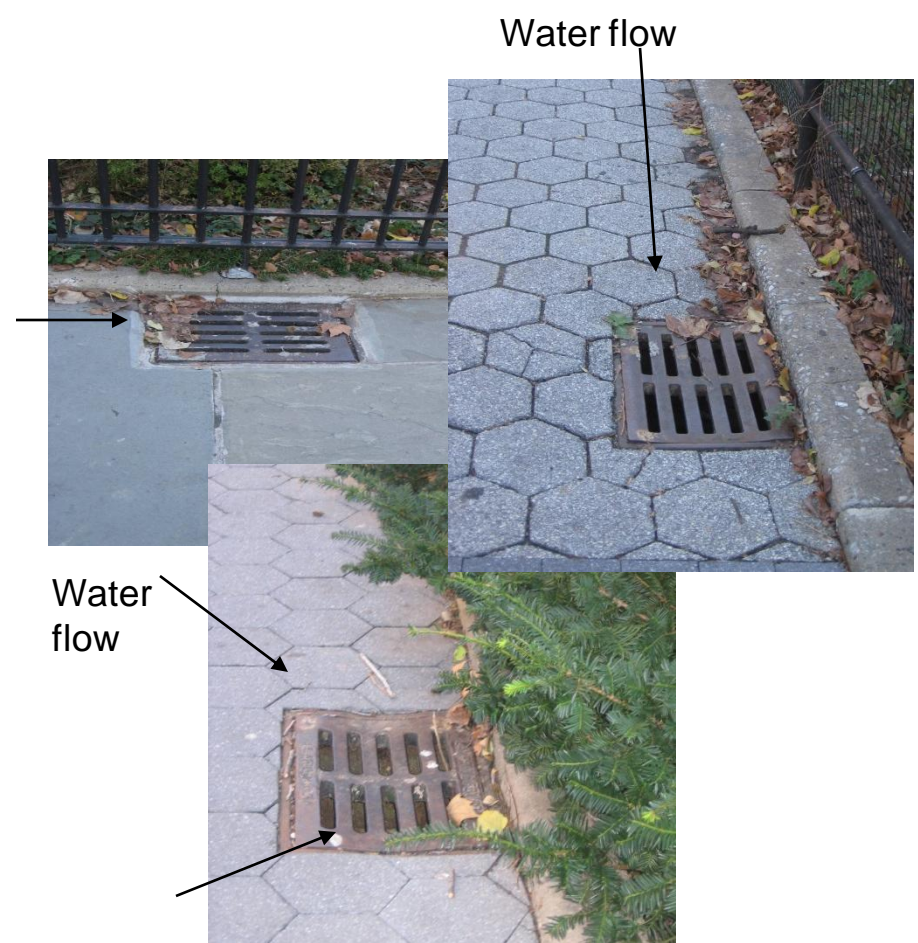
- the water was drained and a Christmas tree was put where the drainage is located
- the head sticking out of the pile of dirt looks like the water pump or part of the water system that fills up the circular tank
- the green rectangular box looks like the way to get under the piping/plumbing system as well as the electrical system underneath for this fountain to check it, maintain, and adjust if necessary.

Shows wire and electrical circuit applied to light the tree



This are some manholes scattered around the park

- Most of us know that the city sewage system runs underneath – the manholes access the piping sewage system
- Probably many of the neighboring building sewage system runs across under the park
- they number probably varies on the critical clean up connection as well as to maintain and adjust the system.



- These are the drainage located all over the park
- I notice that most of them are located at the end of each sloped walk way
  - I indicated with the arrow where the water would flow incase of precipitation

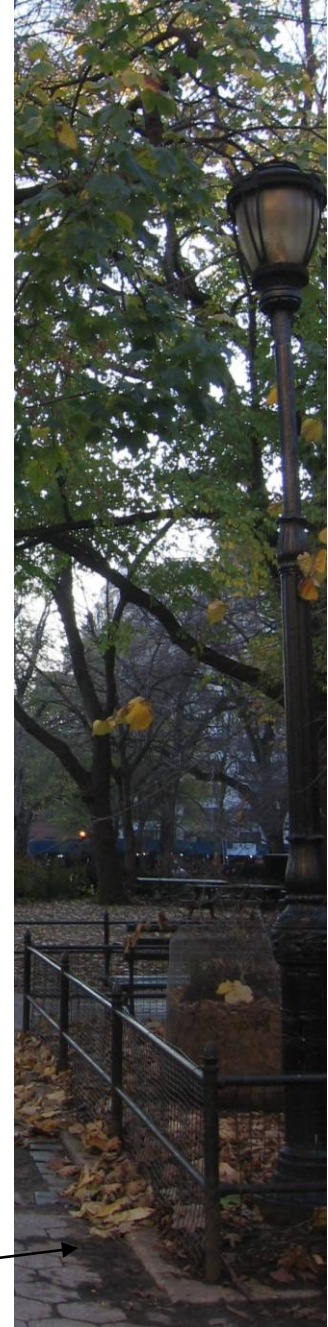


Water pipe, incase of emergency

## Lighting

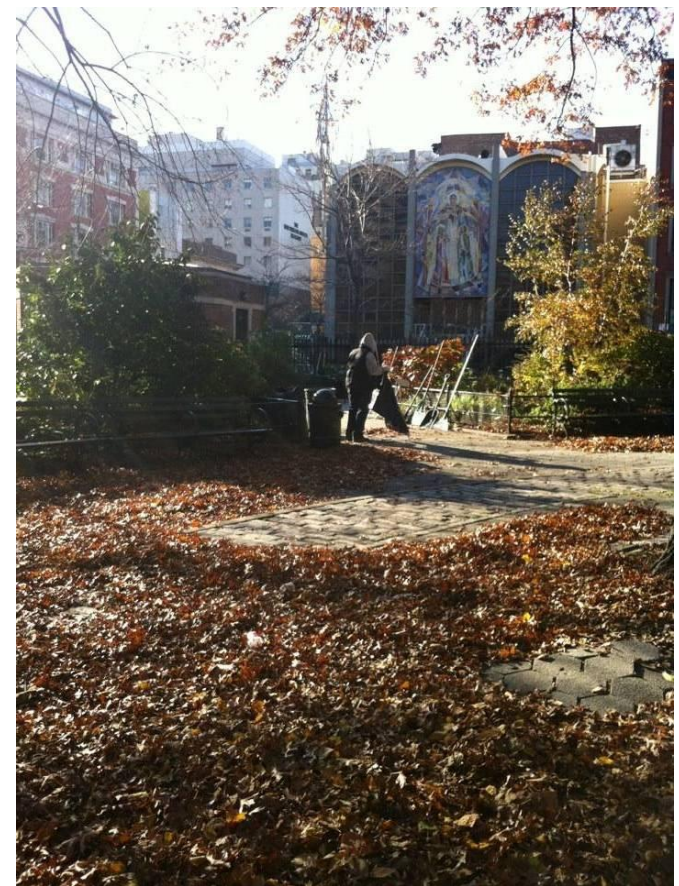
- there are automatic lamps all over the park
- they automatically lit up in the winter time I think around 4:00pm or 4:30pm eastern pacific time
- the wirings are inside the lamp post – they are not exposed due to weather as well as so nobody would mess with them
- the concrete box right in the middle of this picture – this one I think in particular is access not only on a water pipes but as well as the electrical connection of the lamp although I didn't see another kind on the other lamps.

None on this one



I was astonished as I saw about 10 trash can in just one half of the park

- they have a great waste management system – but ironically there are so much dead leaves all over the park
- by bringing a lot of garbage can – they prevent a lot of maintenance and problems on drainage as well as keeping the water, air and surroundings clean



The morning, I saw one maintenance person trying to clean up the dead leaves – I don't think 3 person would be enough, thus one shouldn't be

Benches – enables people to view and rest as well as hang out inside the park

- There are benches in a row surrounding almost the entire perimeter of the park
- There are also some in the circle in the middle of the park that surrounds the open area near the fountain
- these photo shows the good benches many of them are fading in color
- I find most parks run out of benches to sit on because of so many people, but in Stuyvesant I saw more benches than I saw people hanging out



Inside the circular area bench



Perimeter benches



Statue of Peter Stuyvesant  
Sketch by Sean Mercado

These pictures represent what I think is the “special construction” in the park.

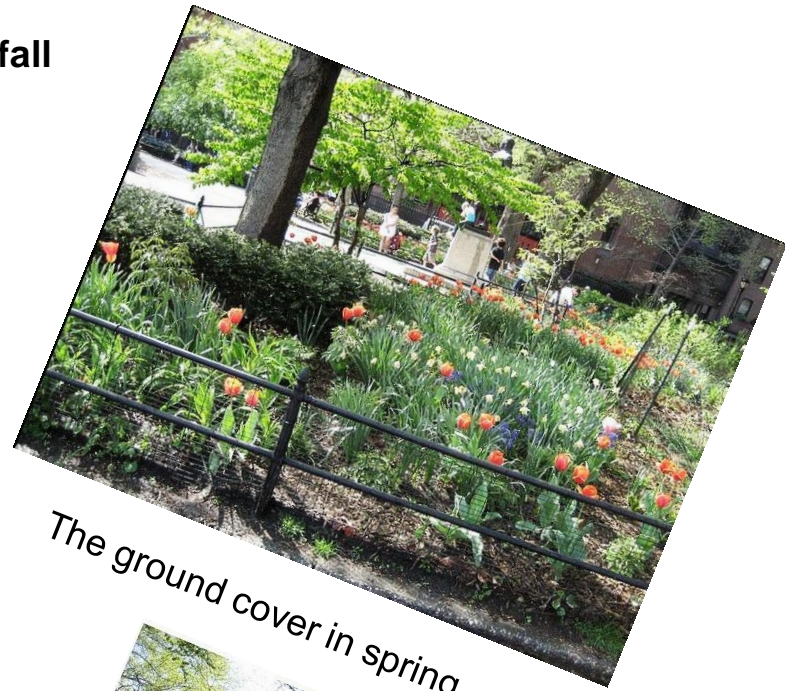
The one on the right is the magnificent fencing made from cast-iron, is I think the second oldest fence in New York City. It must have been maintained well as we can see it stands firm and beautifully surrounding the park.

← The drawing on the left, represent the statue of Peter Stuyvesant created by Gertrude Vanderbilt in 1941, who sold the four acres for five dollars to City of New York for a park to be built. This amount really astonish me because of our economy today.



## The differences in spring and fall

I was surprised to see the differences between the park in spring and fall as we can see in the picture on the right side we can see the tulips with the colorful texture and scale. On the left side we can feel the coldness of the environment and surrounding area as the falling dead leaves covers the ground.



The park contains different trees and shrubs for example:

- Red maple
- American Elm
- Saucer magnolia
- White oak

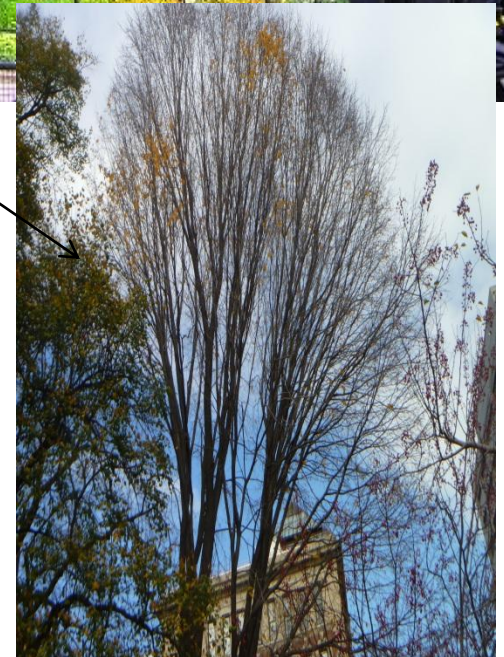
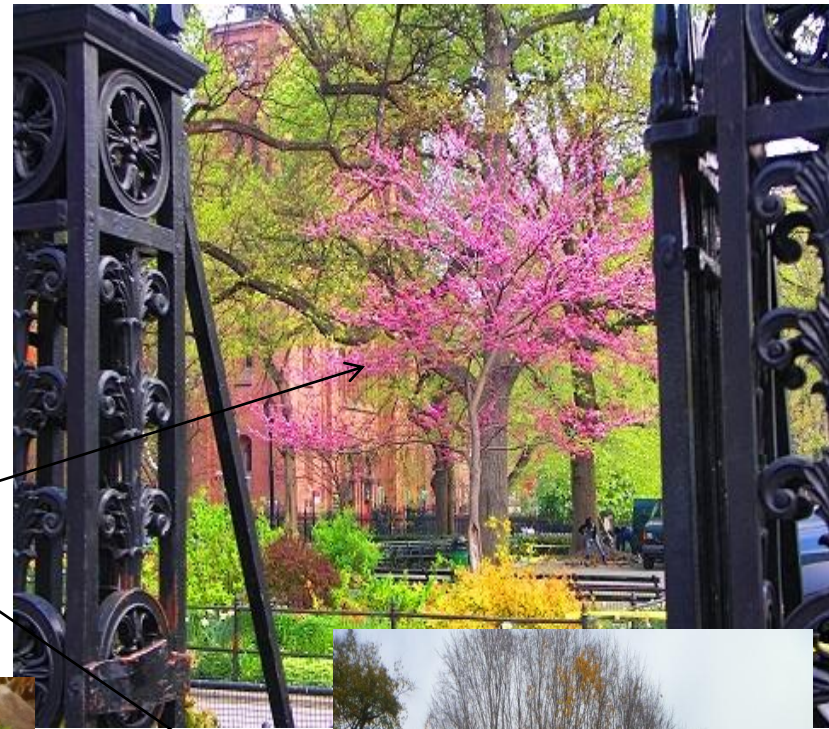


shrubs



Squirrels are one of the most famous part in wild life in NYC parks

Trees in the park in fall and spring





# Personal experience of the park

In my visit to Stuyvesant square I get closer to a place that its environment takes you back to old classical and historical times. Not just the park that it gives this feeling but also the surrounding structures for example St. Mary's church, the mosaics on the main facing entrance takes me back to the old byzantine churches. The residential buildings around still have its old gothic and classical design on its exteriors.

The significance of the park vegetation comes from the wide different amount of trees and different plants the park hosts. The old red maples and the mix between the deciduous and evergreen trees give the park old classical touch. The park has different types of shrubs with a mix of evergreen and flowering. The main ground cover element is gold band ground cover and grass. The overall scale is symmetrical with a old classical texture while the surrounding environment enhance the classical sense with its old classical structure design.