

# Site Inventory: Stuyvesant Square



Fall 2011

Arch 1250

Mario Alulema

Professor Calhoun

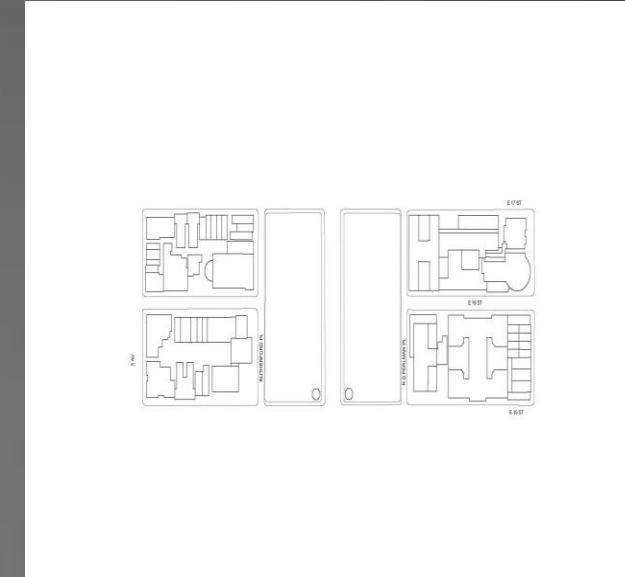
# Background

## Climate

New York City is part of the Cool-Temperate Region as the rest of the Northern Eastern hemisphere.

Stuyvesant Square, which is part of the Northern Eastern Hemisphere is located in the Mid Atlantic Region climate which covers New York City, and Long Island. This region is strongly affected by the Atlantic Ocean. The temperature can vary depending on the seasons., from cold chilly winters (November – March) to hot humid summers (May- August) and cool springs and autumns in between (March – April and September – November respectively).

The micro climate of Stuyvesant Square is greatly affected by the orientation of the park. The park receives a small amount of breeze because buildings around it create a channel directing wind straight to the park. Vegetation, soil depth, moisture content also contribute to the park's micro climate. Trees and other types of vegetation offer shading to some parts of the park.



## Location

Stuyvesant Square is a park located in Manhattan, New York City between 15<sup>th</sup> street and 17<sup>th</sup> street. Second Avenue divides the park in two halves.

The park is in the border between zoning districts R7B and R8A. This project is 49 feet above sea level, with a surface area of 3.93 acres.

# Neighborhood

Stuyvesant Square, is named after the neighborhood it's located in. Surrounding the park, one can find various religious, office, and residential spaces.

There is the modernist St. Mary's Catholic Church on the South side of the park. On the East side of the park is the New York University Hospital for joint diseases. And on the west side there is Beth Israel Medical Center. On 17<sup>th</sup> street there is a four star hotel.

St. Mary's catholic church is a postmodernist building that plays with the quietness of religion and the playfulness of architecture colors and ornaments.

The Victorian architecture in the hotel is quite visible. It has details inspired by nature all around the façade. The windows have decorative pediment on top with beautiful details, that helps make the architecture surrounding this park more diverse.



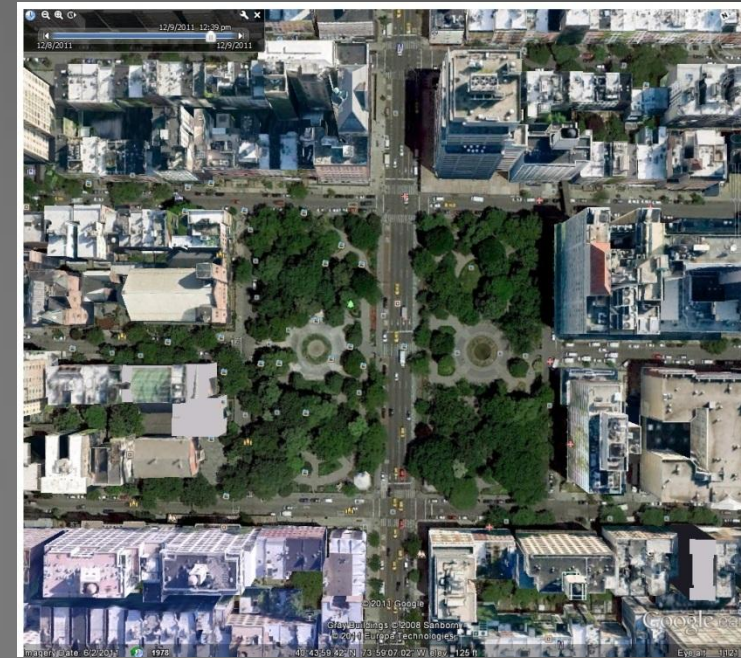
# Circulation

There are different ways of getting to Stuyvesant Square. One can take the 4, 5, 6, N, Q, R subway to 14<sup>th</sup> Union Square. From there, walk north to 15<sup>th</sup> avenue and turn east to Second avenue. Another route one can take, is taking the L train and getting off at 3<sup>rd</sup> avenue. From there, walk to Second avenue, and the park is there.

One can also reach this park by car. Second avenue is a two way street and there are parking spaces available in 15<sup>th</sup>, 16<sup>th</sup>, and 17<sup>th</sup> street.

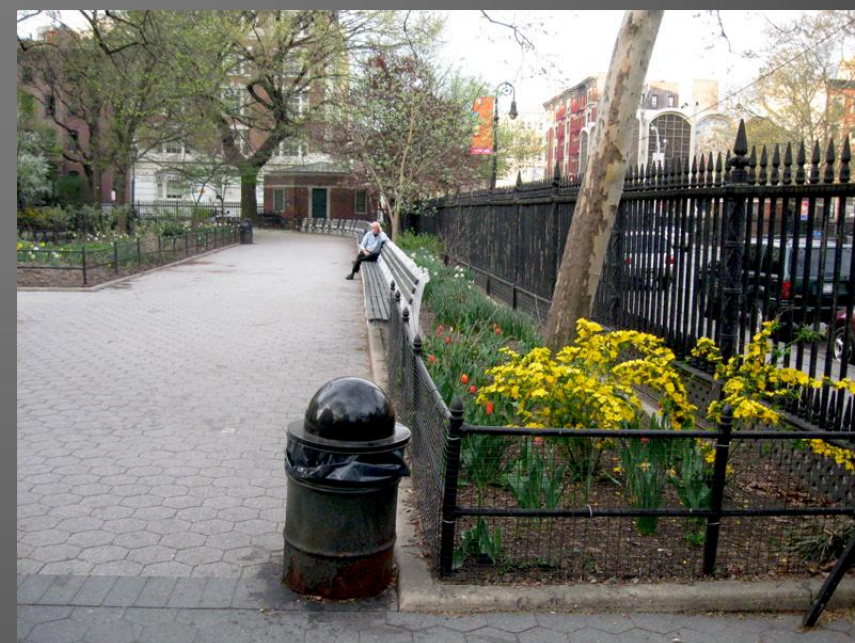
Commuters often use this park as a shortcut to get from 1<sup>st</sup> avenue to 2<sup>nd</sup> avenue and vice versa. It's easier to go through the park than around it, and saves time.

Also, it brings a great feeling, and one can admire the nature while walking through this park. Many people who live in this neighborhood cross this park in order to get to their job or school.



# Park Hardscape and Amenities

The pedestrian pathways are constructed with hexagon concrete paver blocks. They are very wide, approximately 12 feet. The park is enclosed by a wrought iron fence, about 7 feet in height. Benches are found, separating the concrete paths with the vegetation. Trash cans can be found almost every thirty feet, so people find it unnecessary to litter the park. It's a very clean park except for the dry yellow leaves which covered most of its ground area. There are no bathrooms just an old greenhouse, probably to be used as a shelter and a place where to put maintenance supplies such as brooms, trash cans, etc. There are statues surrounding by water fountains. A statue in the western part of the park of Peter Stuyvesant, and a statue of Antonin Dvorak in the eastern half. There are also playgrounds around the park for kids to enjoy.



# Utilities

Electricity is used in Stuyvesant Park for common reasons. It is used for street lamps. The street lamps are placed in a uniform manner offering light to the concrete pathways. Street lamps are found outside the park as well, offering visibility to the vehicles that travel through Second avenue during night time.

Gas utilities may be used for the small maintenance houses located inside the two halves of the parks. Water control and drainage are controlled by two medium size pools, each in both halves of the park. It is likely that the water control is turned on during warm weather for people to feel more fresh. There were a couple of drainage systems throughout the park. This are used for rain water, and it flows out to the Hudson river.



# Vegetation

There is a great variety of vegetation in Stuyvesant Square. In this park, one can find deciduous trees, shrubs, and flower plants.

During 1980, the park was restored and new lawns were planted, along with shrubs (3 to 5 ft height), and flower beds.

There are a few old trees such as the Little-leaf Linden and English elm (25 to 40 feet tall). They still flourish to this very day.



# Other aspects

Hummus is found in this park. This type of soil is found because of all the foliage that falls and decomposes. Top soil is found around trees covering some of the roots. Wildlife varies throughout the park. One can easily notice squirrels around the trees. Pigeons and some ravens also are common in this park. During summer, more wildlife can be seen, such as worms, centipedes, ants and other types of bugs.





# Atmosphere

As I entered the park, it felt very different from other parks I've been to. This was because, the park is surrounded by a black wrought iron fence. Most parks I've been to are open and connected with the sidewalk such as Union Square Park. The park offered a great feeling of relaxation and relieve. One can sit down and enjoy the nature. It is not very crowded because there are a lot of benches where one can sit. A person can decide on which half of the park to sit on. I chose the west side of the park. The trees had no leaves on them because it was winter season during the time I visited the park. There were a lot of dead leaves on the ground and a worker from the Parks And Recreation Department was cleaning up the leaves. I sat around one of the water fountains and enjoyed the view of the statue of Peter Stuyvesant and the nature. The space is very welcoming, one can safely eat their lunch there. The park is very clean and safe. Kids can be seen in the playground enjoying the environment, and the free games. I would like to go back there, and eat my lunch there, because the air smells cleaner and it's nice to get away from the urban environment once in a while. I really liked the design, the park being separated by an avenue. It helps a lot to those people who have to go to work, because it serves a shortcut.