

SHIRTWAIST DRESS BY
SILK N' HIJAB INC.



Shafana Begum

BUF 3100

Prof. Woods

New York City College of Technology

Table of Contents

<i>About the Author</i>	2
<i>Letter to Reader</i>	3
<i>Consumer Profile</i>	4
<i>History</i>	5
<i>Trend Report</i>	<i>Error! Bookmark not defined.</i>
<i>Sketches</i>	8
<i>Sketch # 1</i>	8
<i>Sketch # 2</i>	9
<i>Sketch # 3</i>	10
<i>Sketch # 4</i>	11
<i>Proposed Color Swatches</i>	12
<i>Proposed Fabric Swatches</i>	14
	14

About the Author



My name is Shafana Begum, and I was born and raised in New York. Born into a country of fashion and fashion design. With New York being the fashion capital, I have grown up seeing many trends and garments come and go. But I found one apparel from 19th century that stuck around, the shirtwaist dress. This versatile dress became an everyday wear item for women in the history of fashion. As a proud Muslim woman of color and CEO of Silk n' Hijab Inc., I wanted to take the shirtwaist dress and renew it for the general consumer market and for other Muslim woman.

Silk n' Hijab headquarters located in New York City where history of fashion remains in museums and certain landmarks. As retro/vintage styles are always coming back around, I want to take the liberty in being part of it.

Growing up in a low-income household, it was hard to take part in most fashion trends and whenever a trend became affordable it was already out of its hype. After experiencing this, I have made it my goal to change this and make trends more accessible to those that are considered to be part of the lower income bracket. Therefore, I plan to create shirtwaist dress that will always meet the current trends. Also, apparel that goes along with the shirtwaist dress like different types of pants. In addition, there will be a variety of sizes and quality fabrics that will be used to customers satisfaction.

History

The shirtwaist dress started from the making of a shirtwaist blouse also known as waist. A shirtwaist is a women's blouse that closely resembles a man's contemporary shirt. This term originated in the 1890s specifically for women's blouses that had the button down front and collar. Charlotte Mankey Calasibetta and Phyllis Tortora stated in Dictionary of Fashion (2002) as, "A woman's blouse with a high choker neckline buttoned in back- one of the first items produced by the ready-to-wear industry." The shirtwaist shown in figure 1 was said to be made from a lightweight cream silk. It was most likely worn with the required undergarments like a corset and chemise. Shirtwaist were often made with leg of mutton or bishop sleeves, where the area of the shoulders carried more fabric



Fig. 1 - Designer unknown. Shirtwaist, ca. 1890-1899. Silk. Los Angeles: Fashion Institute of Design and Merchandising Museum & Galleries, 2003.793.7AB. Gift of Ann Jensvold. Source: [FIDM Museum](#)



Fig. 2 - Stanley (American). Shirt, ca. 1894. Cotton. New York: The Museum at FIT, P91.33.1. Museum purchase. Source: [The Museum at FIT](#)

and the area around the wrist was fitting. This bodice gave a variety to women's clothing choices in the 1890s.

To differentiate from a men's style shirt designers would add lace, embroidery, and frills. It would be paired with a skirt made of the same material or it can be made as a one-piece dress. Which bring us to the shirtwaist dress. It emerged as a part of the New Woman uniform in 1890s. In figure 3, we can see this similar style in the nurse's uniform. They have a similar

leg of mutton sleeve. This became a common uniform for the working woman due to how easy



Fig. 3 - Graduate Nurse Uniforms, ca. 1880 to 1910, Source: americannursinghistory.org

it is to maintain and wash. The full skirt of dress version was slowly becoming desired by for American housewives in the 1950s to 1960s. Later, in the late 1970s Geoffrey Beene and Bill

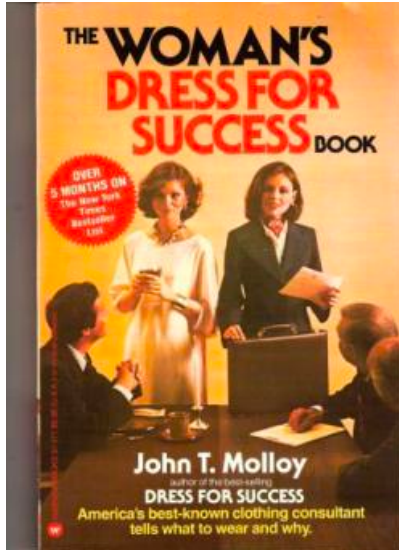


Fig. 4 - *The Woman's Dress for Success Book*

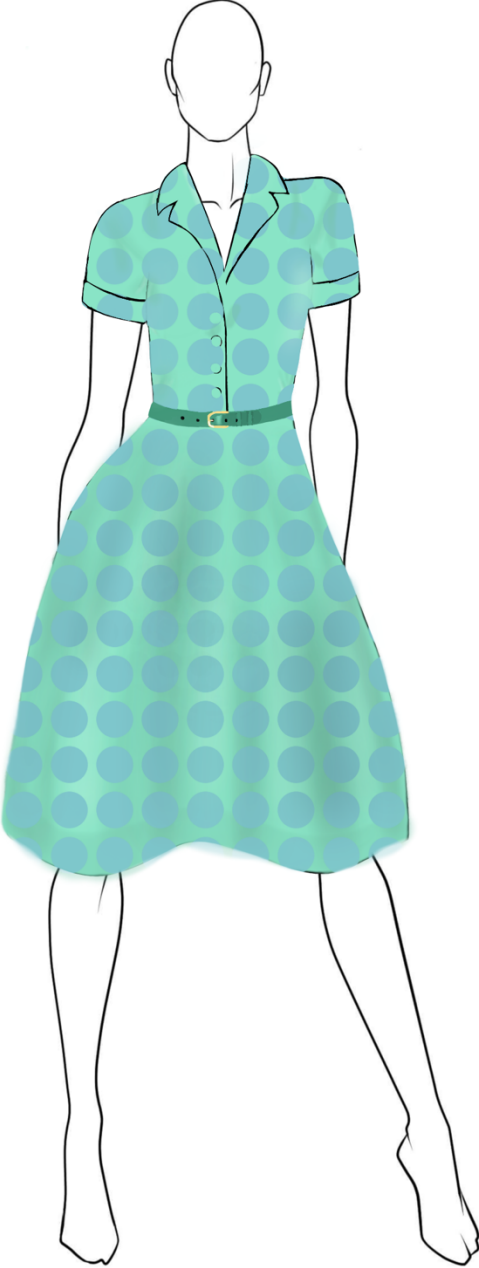
Blass revamped this version and made it into an evening wear by using unique fabrics and luxurious material.

Mood Board



Sketches

Sketch # 1



Wool Crepe

Sketch # 2



Wool crepe

www.ir

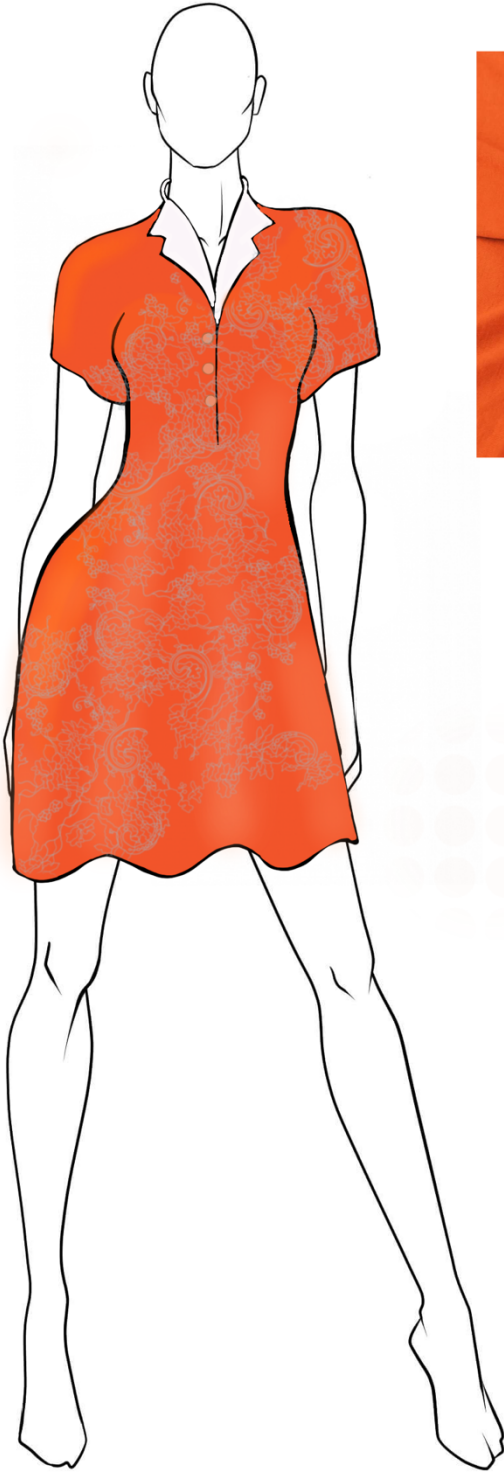
Sketch # 3



Rayon

www.idrawfashion.com

Sketch # 4



Rayon

Proposed Color Swatches



IT'S BL-UEH



CHERRY BLUM



KEY LIME TIME



PLUMP PLUM



TURQUA



LEAF ME BE



MAUVE ME NOT



DEEP BLUE SEA



VELMA-WEEN



BOSTON MELLOW

Proposed Fabric Swatches

Wool Crepe



Rayon



References

- Colors Fall/Winter 2022/23*. ISPO.com. (2021, February 3).
<https://www.ispo.com/en/awards/textrends/colors-fall/winter-2022/23>.
- The Garments of a Woman's Day*. FA & M. (n.d.). <https://fashionarchives.org/educational-programming/the-garments-of-a-womans-day/>.
- History American Nurses Uniforms*. American Nursing History. (n.d.).
<https://www.americannursinghistory.org/history-american-nurses-uniforms>.
- history of the shirtwaist dress Archives*. The Vintage Inn. (2015, January 29).
<http://www.vintageinn.ca/tag/history-of-the-shirtwaist-dress/>.
- McDowell, E. (2020, January 8). *15 style trends experts predict will be everywhere in the next decade*. Insider. <https://www.insider.com/style-fashion-trends-popular-in-the-next-decade-2020>.
- Person. (n.d.). *Blouse*. LoveToKnow. <https://fashion-history.lovetoknow.com/clothing-types-styles/blouse>.
- says, M., & says, D. S. (n.d.). *Vintage Shirtwaist Dress History*. Vintage Dancer.
<https://vintagedancer.com/1940s/the-shirtwaist-dress-the-ultimate-1940s-day-dress/>.
- shirtwaist*. Fashion History Timeline. (2017, September 30).
<https://fashionhistory.fitnyc.edu/shirtwaist/>.