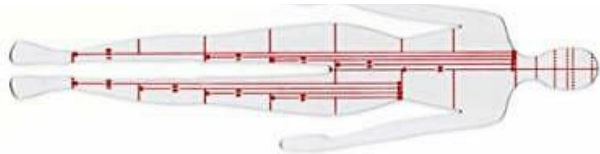




# Seaniah Mcleod

ARTH 1204.Prof Munroe  
20th c. Dress and Culture





# Bias Cut Dress (womens wear)



<https://www.resee.com/john-galliano-bias> |

-Definition: When the cut of the garment is cut in an diangle.

Details: The dress is a silk dress in the color of navy and beige. It contains navy blue leather adjustable shoulder straps with a silver buckle. The length of the dress is from knee to floor

-Silhouette: Slim

-Fashion Designer: John Galliano



# A Line Dress (Womens wear)



- Mid Length, Sleeveless, fitted black floral applique dress.  
Lined with black crepe from under bust to ankle
- Definition: An Fitted dress from the shoulders to hips. However from hips to ankle is wide.

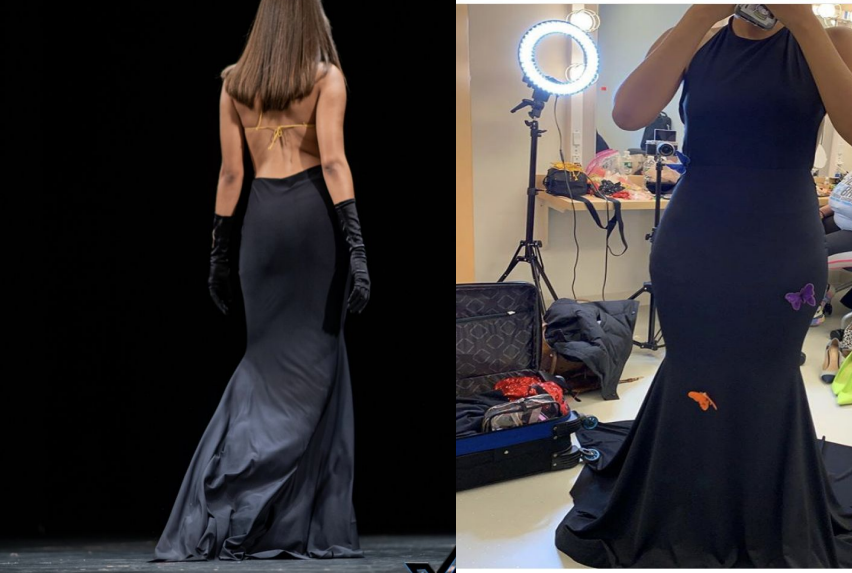
-Silhouette: A line

-Fashion Designer: Christian Siriano

<https://www.farfetch.com/shopping/women/christian-siriano-floral-applique-dress-item-13947609.aspx?fsb=1&size=19&>



# Mermaid dress(Womens wear)



-Definition: A fitted garment that flares outward at the bottom of the dress.

Black spandex ,High neck halter dress. With a variety of colored butterfly appliques all over the garment. Horse hair at the bottom of garment

-Silhouette: Mermaid

-Designer: Seaniah



# 3 / 5 SLEEVE (womens Wear)



- Designer: Collen Winter
- Definition: A  $\frac{3}{5}$  sleeve is a part of a garment covering half of the arm. Male or Females can wear this sleeve style
- Sleeve Silhouette:  $\frac{3}{5}$  sleeve
- Garment Silhouette: Tea length
- Definition: An Tea length garment passes the knee but falls above the ankle.

[4534390\\_876562.jpg](#)



# Cap Sleeve



[alexander-wang-asymmetric-cap-sleeve-dress-item-14714403.aspx](https://www.alexanderwang.com/alexander-wang-asymmetric-cap-sleeve-dress-item-14714403.aspx)

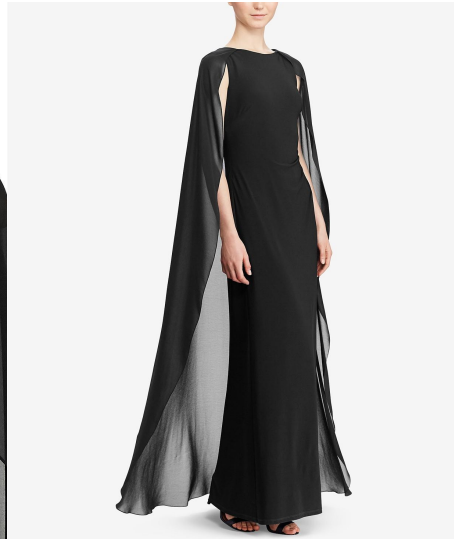
-This garment fabric is white iridescent silk mikado, with an asymmetrical cut at the right side of the dress

-Sleeve Silhouette: Cap sleeve  
-Garment Silhouette: Mini  
-Fashion Designer: Alexander Wang

-Definition: A short sleeve that hangs over the shoulder but has little to no fabric under the arm



# Boat Neck ( Womens Wear)



- Definition: Wide neckline that runs horizontally
- Black and Gray Boat neck dress
- Fashion Designer:Ralph Lauren
- Garment silhouette: sheath with a added cape
- Fabric:crepe

[https://www.macys.com/shop/product/lauren-ralph-lauren-georgette-cape-gown?ID=10207653&pla\\_country=US&CAGSPN=pla&cm\\_mmc=Google\\_Womens\\_PLA--RTW\\_Womens\\_Lauren\\_Ralph\\_Lauren\\_-\\_GS\\_Dresses--72117743461--pg1989831\\_c\\_kclickid\\_kenshoo\\_clickid\\_KID\\_EMPTY\\_255686941\\_1\\_0061551031\\_72117743461\\_aud](https://www.macys.com/shop/product/lauren-ralph-lauren-georgette-cape-gown?ID=10207653&pla_country=US&CAGSPN=pla&cm_mmc=Google_Womens_PLA--RTW_Womens_Lauren_Ralph_Lauren_-_GS_Dresses--72117743461--pg1989831_c_kclickid_kenshoo_clickid_KID_EMPTY_255686941_1_0061551031_72117743461_aud)



# Cowl neck Womens wear



- Definition Cowl neck: Front part of a garment that hangs in a drape form
- Copper crepe satin gown
- Fashion Designer: Jonathan Simkhai
- Silhouette Garment: Trumpet

<https://www.neimanmarcus.com/p/jonathan-simkhai-crepe-back-satin-cowl-neck-gown>





# Halter Neck [Womens Wear]



- Details:Satin Turquoise Draped Dress with split in mid of the leg
- Fashion Designer:DE la Vali
- Garment Silhouette:Sheath
- Definition: A strap that starts at the front of the garment and ends in the back leaving the back out for exposure.

<https://www.farfetch.com/shopping/women/de-la-vali-vivienne-bias-cut-halterneck-maxi-dress-item-13897108.aspx?fsb=1&size=21&stor>



# Kick Pleats



[precis-petite-feminine-silhouette-kick-pleat-skirt-blue-2174781](#)

- Definition: Kick pleats can be found on a narrow skirt. It's an introvert pleat extending upward from the hem line.
- Fashion designer: Konga
- Details: The skirt is all black below the knee with pleats in the back. The front is formal and plain.
- Silhouette: Kick pleat

# Accordion Pleats



- Definition: Accordion pleats are a continuous pleats on a garment that are the same size and width.
- Fashion Designer: Mm6 Maison Margiela
- Details: All black midi skirt



[https://www.farfetch.com/shopping/women/mm6-maison-margiela-accordion-pleat-midi-skirt-item-14702339.aspx?fsb=1&size=19&storeid=11413&utm\\_source=google&utm\\_medium](https://www.farfetch.com/shopping/women/mm6-maison-margiela-accordion-pleat-midi-skirt-item-14702339.aspx?fsb=1&size=19&storeid=11413&utm_source=google&utm_medium)



# Platform Heel



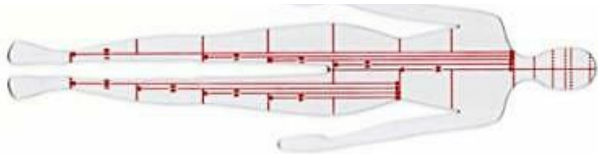
<https://www.neimanmarcus.com/p/christian-louboutin-dirditta-pate>

- Definition: Platform can range from heels, sneaker, boots and etc. It is an shoe that contains a thick sole
- Fashion Designer: Christian Louboutin
- Details: 5.3 inch patent heel with signature leather red outsole
- Made in Italy



# Seaniah Mcleod

ARTH 1204.Prof Munroe  
20th c. Dress and Culture





# Bias Cut Dress (womens wear)



<https://www.resee.com/john-galliano-bias>

-Definition: When the cut of the garment is cut in an diangle.

Details: The dress is a silk dress in the color of navy and beige. It contains navy blue leather adjustable shoulder straps with a silver buckle. The length of the dress is from knee to floor

-Silhouette: Slim

-Fashion Designer: John Galliano



# A Line Dress (Womens wear)



- Mid Length, Sleeveless, fitted black floral applique dress.  
Lined with black crepe from under bust to ankle
- Definition: An Fitted dress from the shoulders to hips. However from hips to ankle is wide.

-Silhouette: A line

-Fashion Designer: Christian Siriano

<https://www.farfetch.com/shopping/women/christian-siriano-floral-applique-dress-item-13947609.aspx?fsb=1&size=19&>



# Mermaid dress(Womens wear)



-Definition: A fitted garment that flares outward at the bottom of the dress.

Black spandex ,High neck halter dress. With a variety of colored butterfly appliques all over the garment. Horse hair at the bottom of garment

-Silhouette: Mermaid

-Designer: Seaniah





# 3 / 5 SLEEVE (womens Wear)



- Designer: Collen Winter
- Definition: A  $\frac{3}{5}$  sleeve is a part of a garment covering half of the arm. Male or Females can wear this sleeve style
- Sleeve Silhouette:  $\frac{3}{5}$  sleeve
- Garment Silhouette: Tea length
- Definition: An Tea length garment passes the knee but falls above the ankle.

[4534390\\_876562.jpg](#)



# Cap Sleeve



[alexander-wang-asymmetrical-cap-sleeve-dress-item-14714403.aspx](https://www.alexanderwang.com/alexander-wang-asymmetrical-cap-sleeve-dress-item-14714403.aspx)

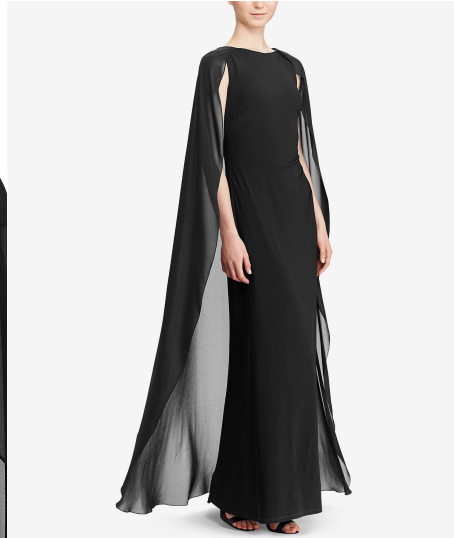
-This garment fabric is white iridescent silk mikado, with an asymmetrical cut at the right side of the dress

-Sleeve Silhouette: Cap sleeve  
-Garment Silhouette: Mini  
-Fashion Designer: Alexander Wang

-Definition: A short sleeve that hangs over the shoulder but has little to no fabric under the arm



# Boat Neck ( Womens Wear)



- Definition: Wide neckline that runs horizontally
- Black and Gray Boat neck dress
- Fashion Designer:Ralph Lauren
- Garment silhouette: sheath with a added cape
- Fabric:crepe

[https://www.macys.com/shop/product/lauren-ralph-lauren-georgette-cape-gown?ID=10207653&pla\\_country=US&CAGSPN=pla&cm\\_mmc=Google\\_Womens\\_PLA--RTW\\_Womens\\_Lauren\\_Ralph\\_Lauren\\_-\\_GS\\_Dresses--72117743461--pg1989831\\_c\\_kclickid\\_kenshoo\\_clickid\\_KID\\_EMPTY\\_255686941\\_1\\_0061551031\\_72117743461\\_aud](https://www.macys.com/shop/product/lauren-ralph-lauren-georgette-cape-gown?ID=10207653&pla_country=US&CAGSPN=pla&cm_mmc=Google_Womens_PLA--RTW_Womens_Lauren_Ralph_Lauren_-_GS_Dresses--72117743461--pg1989831_c_kclickid_kenshoo_clickid_KID_EMPTY_255686941_1_0061551031_72117743461_aud)



# Cowl neck Womens wear



- Definition Cowl neck: Front part of a garment that hangs in a drape form
- Copper crepe satin gown
- Fashion Designer: Jonathan Simhaki
- Silhouette Garment: Trumpet

<https://www.neimanmarcus.com/p/jonathan-simkhai-crepe-back-satin-cowl-neck-gown>



# Halter Neck [Womens Wear]



- Details:Satin Turquoise Draped Dress with split in mid of the leg
- Fashion Designer:DE la Vali
- Garment Silhouette:Sheath
- Definition: A strap that starts at the front of the garment and ends in the back leaving the back out for exposure.

<https://www.farfetch.com/shopping/women/de-la-vali-vivienne-bias-cut-halterneck-maxi-dress-item-13897108.aspx?fsb=1&size=21&stor>



# Kick Pleats



[precis-petite-feminine-silhouette-kick-pleat-skirt-blue-2174781](#)

- Definition: Kick pleats can be found on a narrow skirt. It's an introvert pleat extending upward from the hem line.
- Fashion designer: Konga
- Details: The skirt is all black below the knee with pleats in the back. The front is formal and plain.
- Silhouette: Kick pleat

# Accordion Pleats



- Definition: Accordion pleats are a continuous pleats on a garment that are the same size and width.
- Fashion Designer: Mm6 Maison Margiela
- Details: All black midi skirt



[https://www.farfetch.com/shopping/women/mm6-maison-margiela-accordion-pleat-midi-skirt-item-14702339.aspx?fsb=1&size=19&storeid=11413&utm\\_source=google&utm\\_medium](https://www.farfetch.com/shopping/women/mm6-maison-margiela-accordion-pleat-midi-skirt-item-14702339.aspx?fsb=1&size=19&storeid=11413&utm_source=google&utm_medium)



# Platform Heel



<https://www.neimanmarcus.com/p/christian-louboutin-dirditta-pate>

- Definition: Platform can range from heels, sneaker, boots and etc. It is an shoe that contains a thick sole
- Fashion Designer: Christian Louboutin
- Details: 5.3 inch patent heel with signature leather red outsole
- Made in Italy





# Cuban Heel



- Definition: The cuban heel is a medium wide heel and can be worn by male or female
- Details: Crocodile leather boots with back stitch panel
- Fashion Designer:Ganni

[https://www.matchesfashion.com/us/products/1279784?country=USA&rffrid=sem.Google.n=g.cid=1775440313\\_aj](https://www.matchesfashion.com/us/products/1279784?country=USA&rffrid=sem.Google.n=g.cid=1775440313_aj)

# Wedge Heel



Definition: can be a heel or boot  
can can be serves as both heel  
and sole together.

Fashion Designer: Jimmy Choo

Details: All over gold glitter  
peep toe wedge heel, with  
leather sole.



# Stilettos



Definition: Thin long heel that can b worn on shoes and boots

Fashion Designer: Giuseppi Zanotti

Details: Metallic leather heel With rhinestone chain.

[https://www.giuseppezanotti.com/us/harmony-sparkle-e900012001?dfw\\_tracker=65791-E9000](https://www.giuseppezanotti.com/us/harmony-sparkle-e900012001?dfw_tracker=65791-E9000)



# Ballet flats



Definition: round toe shoe with flat heel

Fashion Designer: Kate Spade

Detail:Leather Black 2.5inch heel with gold buckle at toe.



# Cuban Heel



- Definition: The cuban heel is a medium wide heel and can be worn by male or female
- Details: Crocodile leather boots with back stitch panel
- Fashion Designer:Ganni

[https://www.matchesfashion.com/us/products/1279784?country=USA&rffrid=sem.Google.n=g.cid=1775440313\\_aj](https://www.matchesfashion.com/us/products/1279784?country=USA&rffrid=sem.Google.n=g.cid=1775440313_aj)

# Wedge Heel



Definition: can be a heel or boot  
can can be serves as both heel  
and sole together.

Fashion Designer: Jimmy Choo

Details: All over gold glitter  
peep toe wedge heel, with  
leather sole.



# Stilettos



Definition: Thin long heel that can b worn on shoes and boots

Fashion Designer: Giuseppi Zanotti

Details: Metallic leather heel With rhinestone chain.

[https://www.giuseppezanotti.com/us/harmony-sparkle-e900012001?dfw\\_tracker=65791-E9000](https://www.giuseppezanotti.com/us/harmony-sparkle-e900012001?dfw_tracker=65791-E9000)



# Ballet flats



Definition: round toe shoe with flat heel

Fashion Designer: Kate Spade

Detail:Leather Black 2.5inch heel with gold buckle at toe.