

What is Value?



CHRIS VAN ALLSBERG,
THE HOUSE ON MAPLE STREET,
THE MYSTERIES OF HARRIS BURDICK

Value Studies.

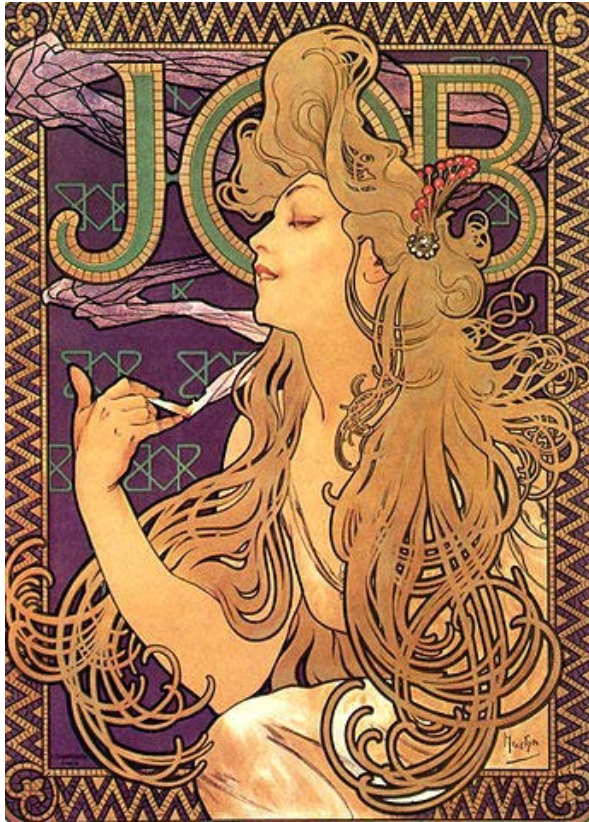


ARANDA DILL VALUE ROUGHS FOR THE BORING ROOM

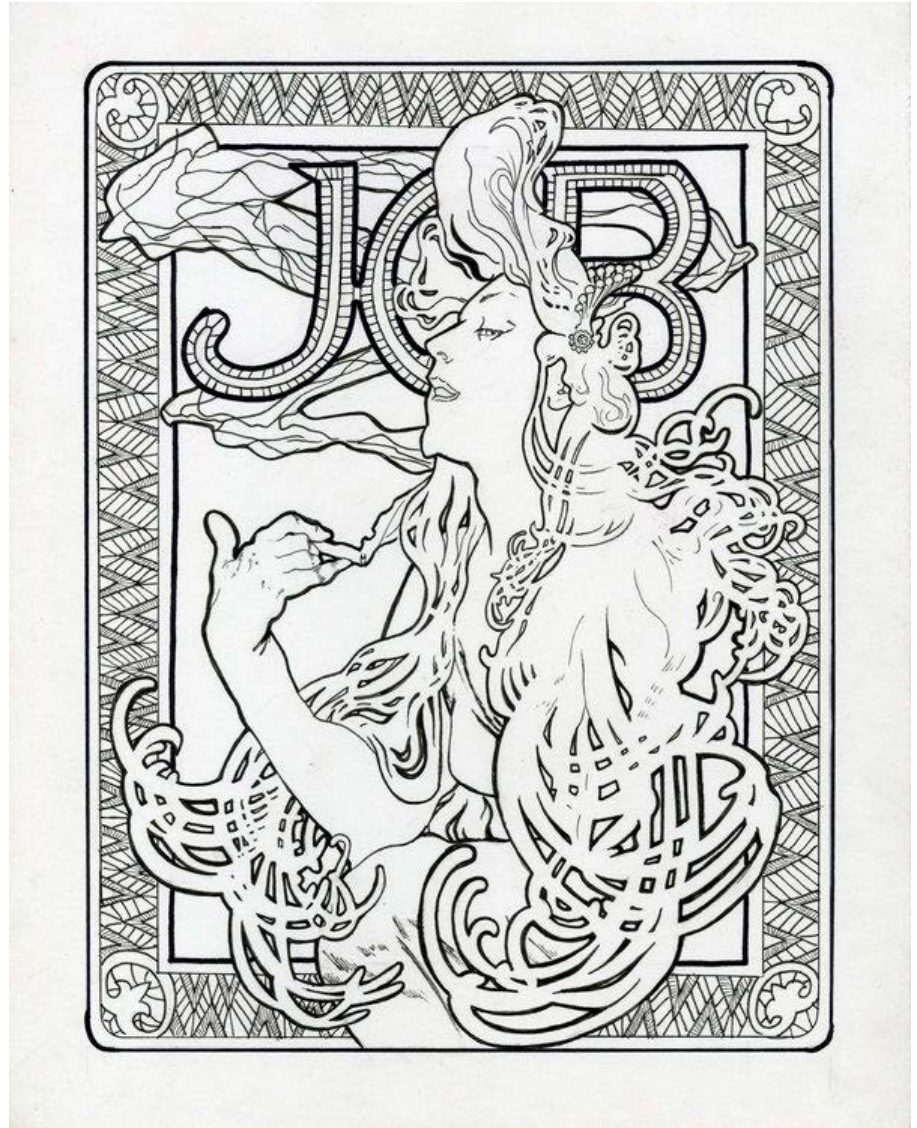
In this image, note how digital artist Aranda Dill tries three different value schemes. By making value roughs, she's able to test different lighting ideas and focal points in the art piece, before moving onto the final.

WHY IS VALUE SO IMPORTANT?

LETS first have a brief discussion on what value IS.



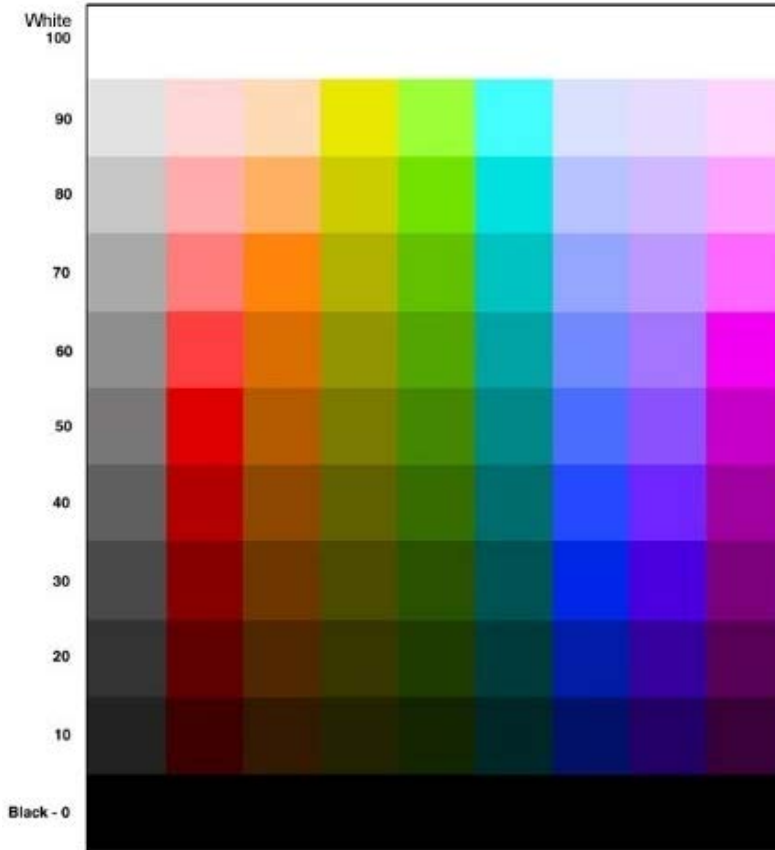
ALPHONSE MUCHA
POETRY





ALPHONSE MUCHA
STUDY FOR "POETRY"

Value is the relative lightness or darkness of a color.

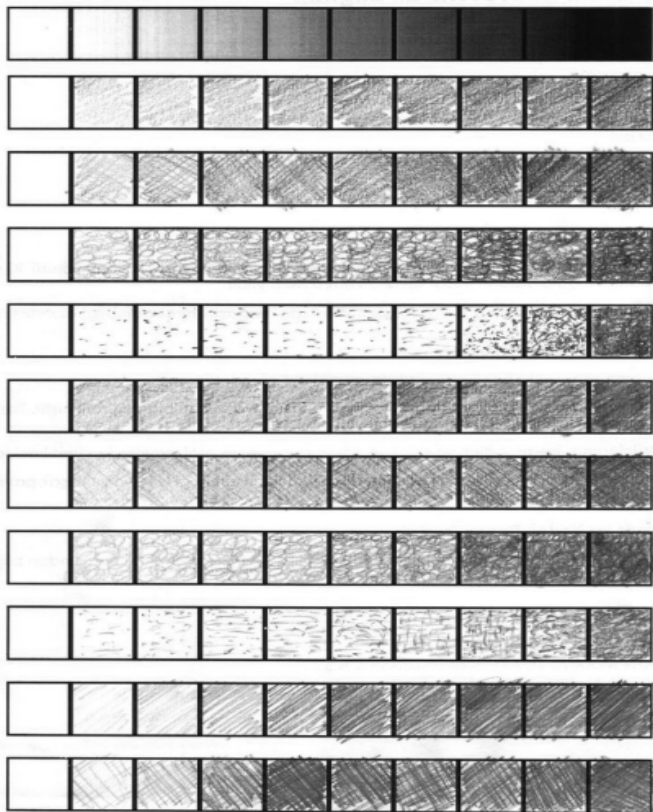


As is clearly illustrated in this scale, value doesn't refer to whether a color is gray, black, or white.

Instead it refers to that color's **position** on a scale *between* black and white.

- **Therefore, we can define value in art as a measurement tool used to refer to the relative darkness or lightness of a color.**
- **We can define a value scale as a tool used to measure the places at which color fits into that spectrum of light and dark.**

A grayscale refers to the range of lightness and darkness that exists in an image.



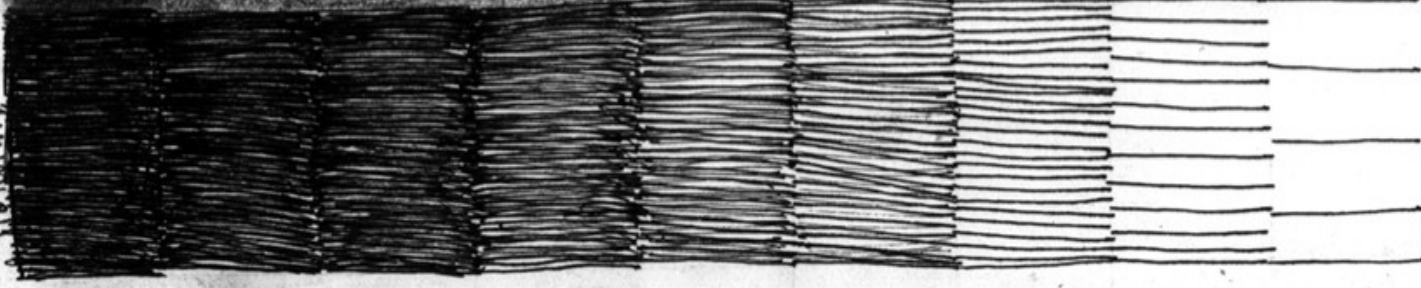
A grayscale should move in consistent increments, from the lightest light possible to the darkest dark possible.

There should be no large jumps in value.

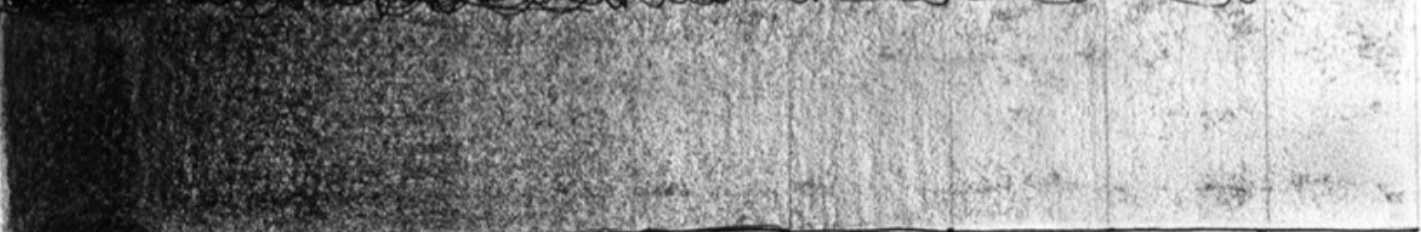


- **A good way to think about the gradual nature of the grayscale's fluctuation is to think about using a dimmer in order to gradually adjust the amount of light in a room, as opposed to simply turning the light on or off.**

Hatching



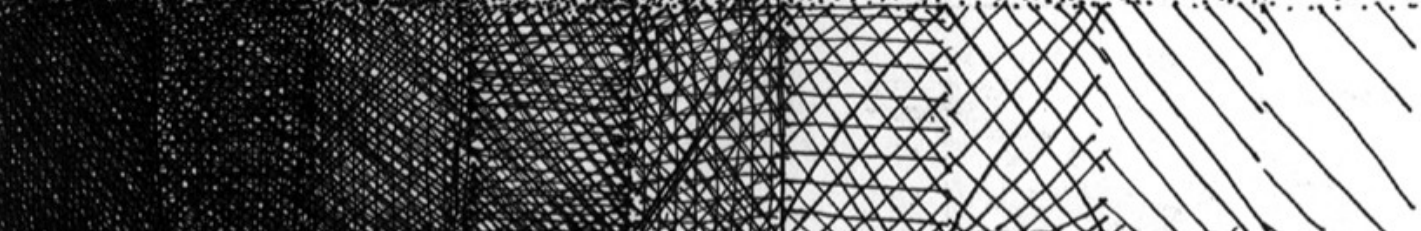
Pencil Value



Extended Scribble



Cross-Hatching



Stippling



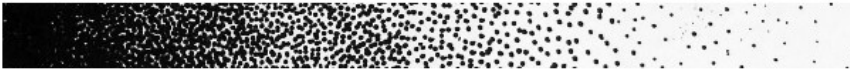
Hatching



Cross Hatching



Stipple



Random Mark



- Hatching refers to lines drawn in one direction.
- Crosshatching refers to lines drawn in two different directions.
- Stippling refers to a pattern of dots.
- Random Marks show how a change of density of any kind of pattern will read as a change in value.



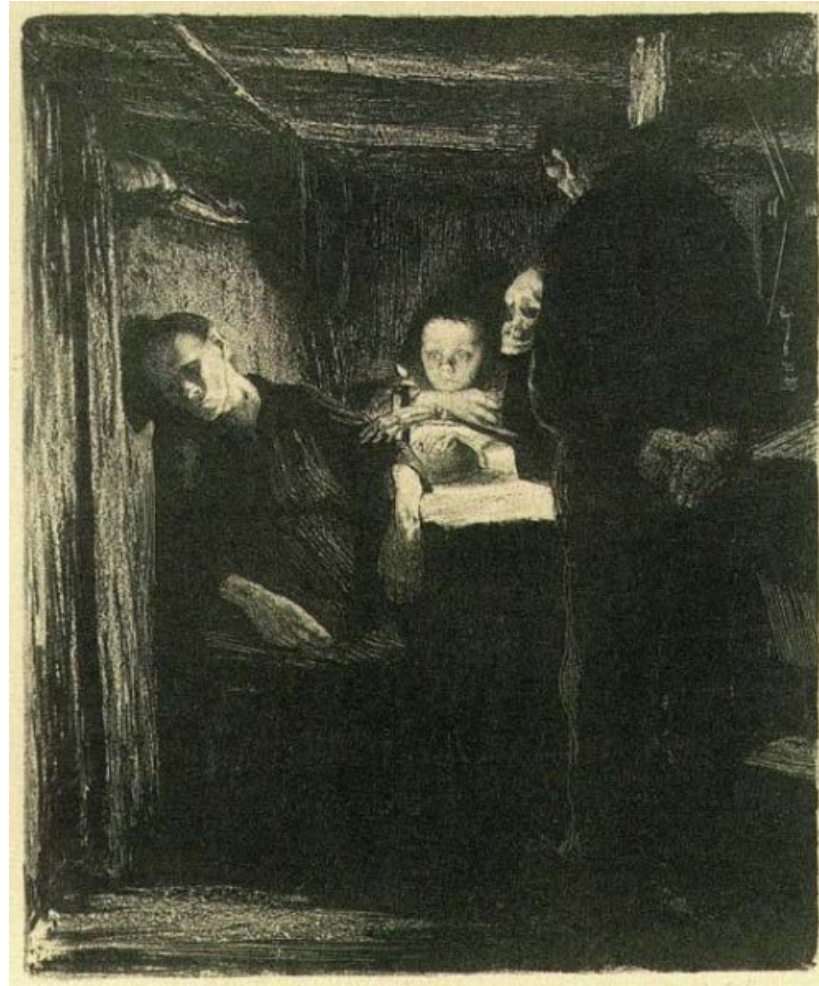
VALUE CAN CREATE CONTRAST



M.C. ESCHER

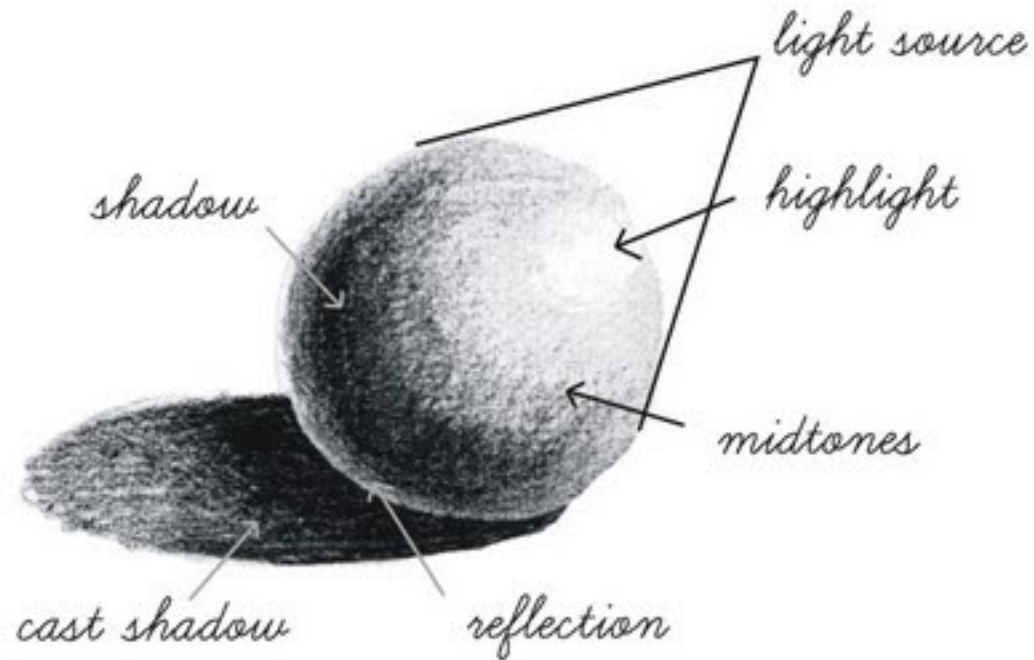
Strong contrast of light and dark, or placing values from opposite ends of the value scale close to one another creates high contrast, acting like a magnet that draws the viewer's eye right in!

VALUE CAN CREATE **FOCAL POINTS**



In this image by German artist Kathe Kollwitz, notice the purposeful use of **contrast**, which both directs the viewer as well as establishes **mood**.

VALUE CAN DEFINE LIGHT, SHADOW and FORM



By mimicking how light looks in the real world,
we fool our mind into seeing 3D form on a 2D surface.

**Why is VALUE so IMPORTANT?
BECAUSE IT CAN...**

- **create focal points**
- **define light sources**
- **guide the viewer through the image**
- **express depth**
- **describe the time of day**
- **create mood**

INSPIRATION in
BLACK AND WHITE!

In the following images
lets examine how the
artists use value to:

- create focal points
- define light sources
- guide the viewer
- express depth
- Describe time of day
- create mood

What techniques are they
using to do so?

ALBERT DÜRER,
THE MELANCHOLIA





ALBERT DÜRER,
THE FOUR HORSEMEN



CHRIS VAN ALLSBERG,
OSCAR AND ALPHONSE,
THE MYSTERIES OF HARRIS BURDICK



CHRIS VAN ALLSBERG,
THE THIRD FLOOR BEDROOM
THE MYSTERIES OF HARRIS BURDICK



ROVINA CAI



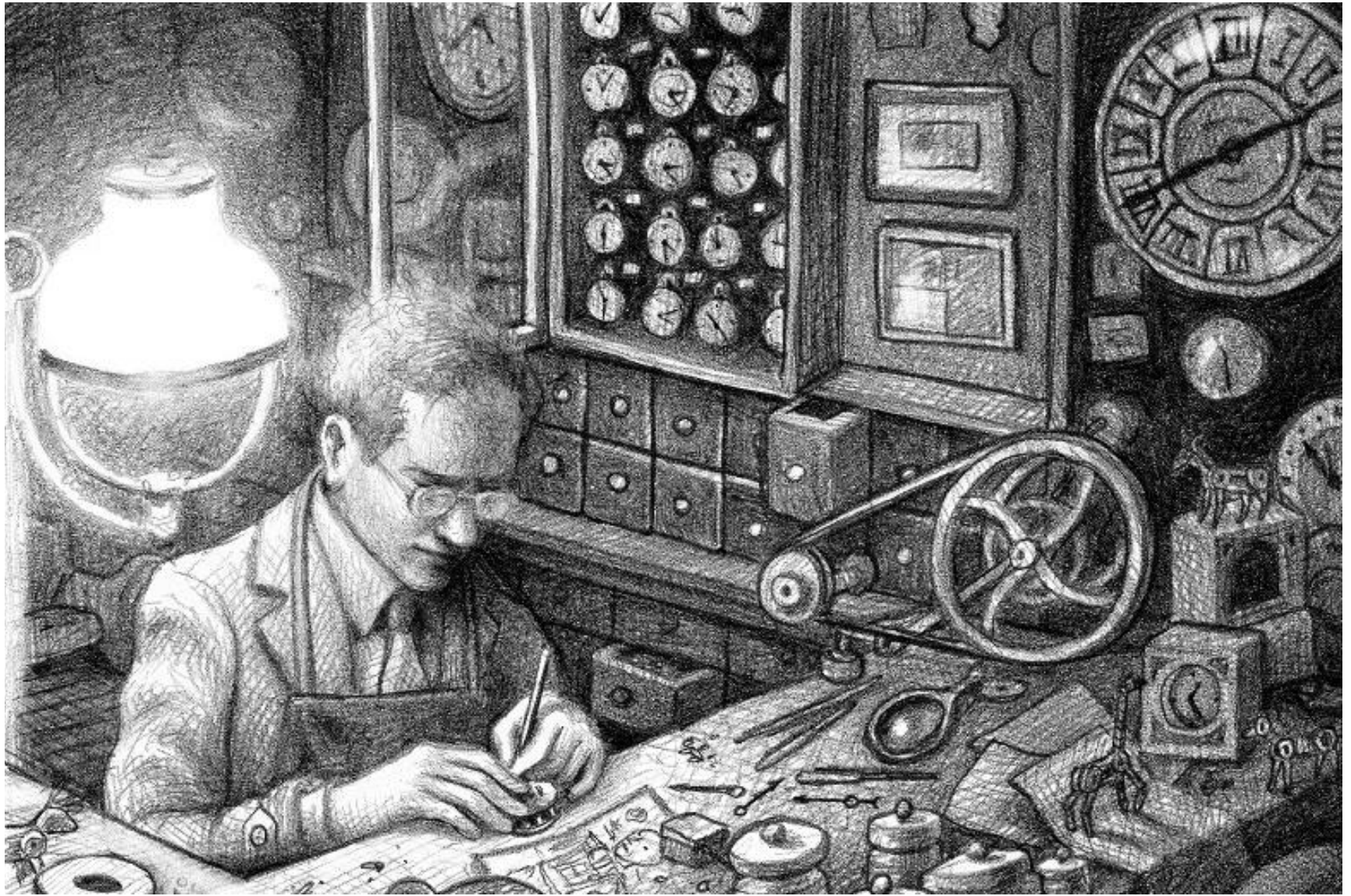
ROVINA CAI



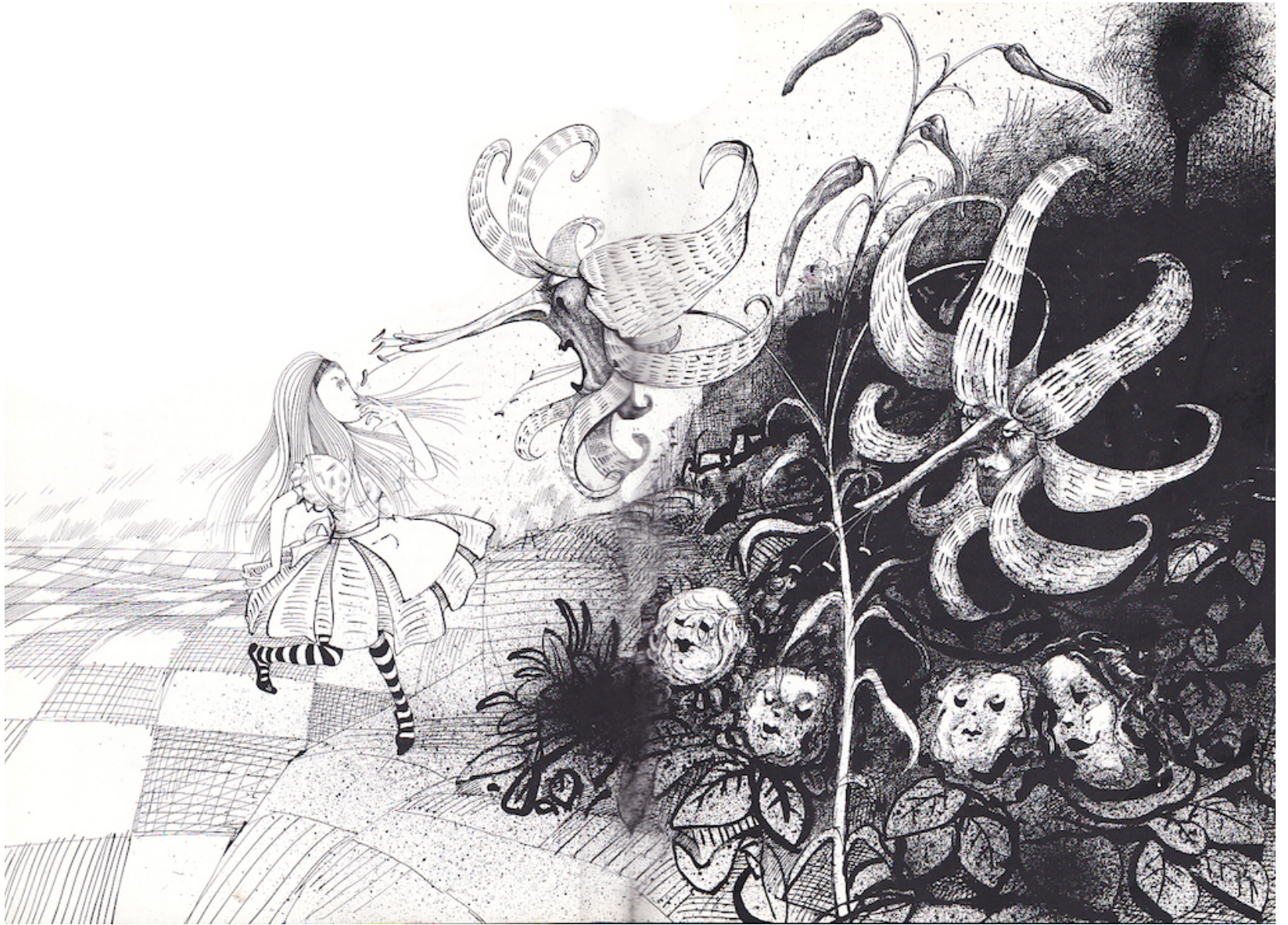
MAURICE SENDAK, PROPOSED ILLUSTRATION FOR THE HOBBIT



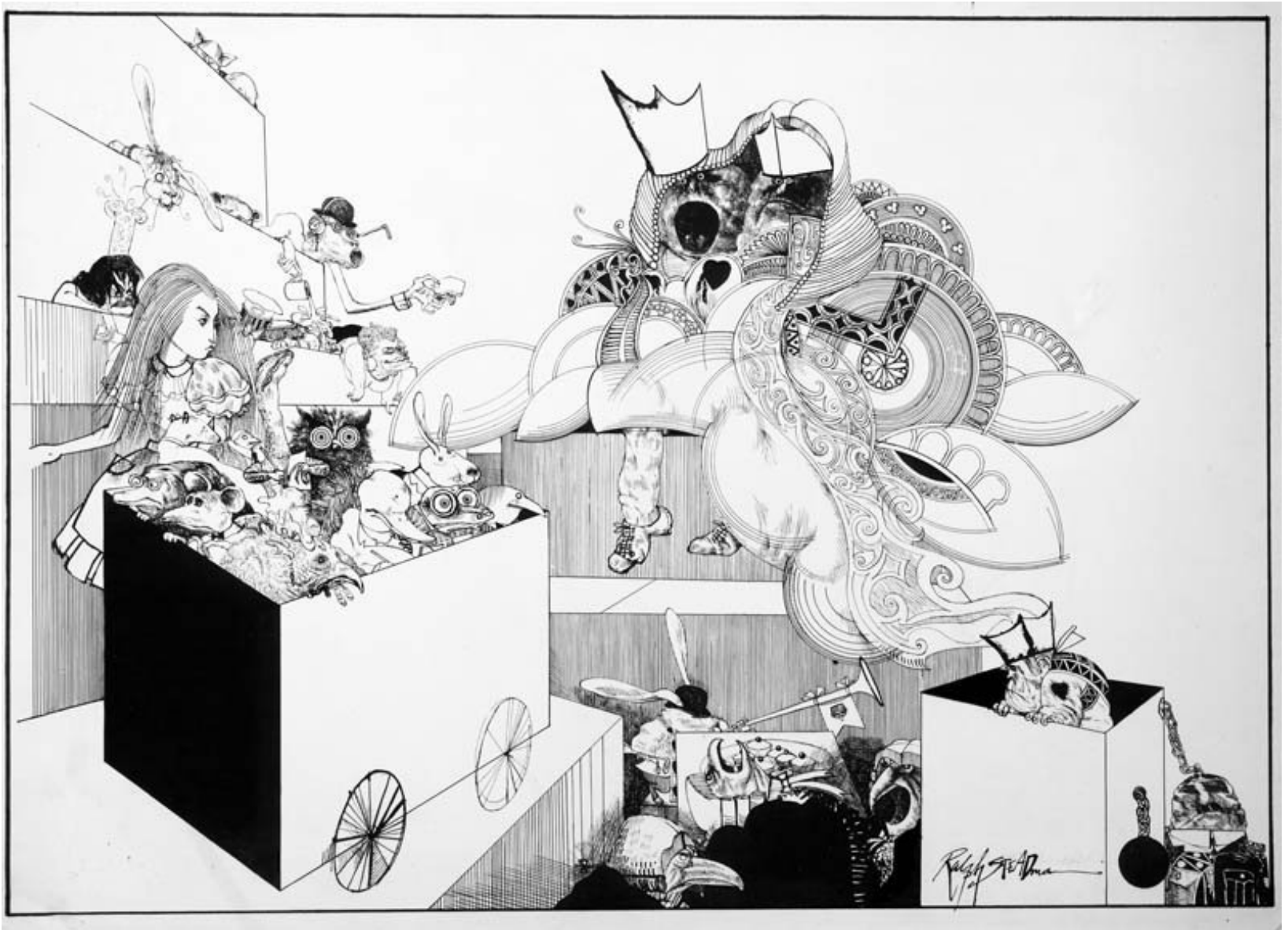
BRIAN SELZNICK, THE INVENTION OF HUGO CABRET



BRIAN SELZNICK, THE INVENTION OF HUGO CABRET



RALPH STEADMAN, ALICE



RALPH STEADMAN, ALICE