

January 3, 2017

Syphilis

SHEELA ALBURQUERQUE

PROFESSOR MARIA-ELENA BILELLO, RDH, MSPH

WINTER SESSION 2018 HISTOLOGY & EMBRYOLOGY

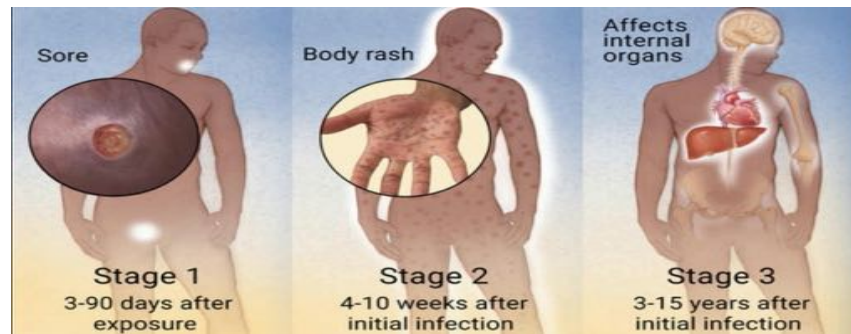
Syphilis

- ▶ The bacterial spirochete called *Treponema Pallidum* causes syphilis.
- ▶ **Syphilis** is an STD causing painless sores called chancre. A highly contagious disease transmitted from person to person by direct contact to the sore.
- ▶ A pregnant woman with syphilis can transmit the bacteria to the fetus through the placenta causing developmental problems to the fetus called congenital syphilis. The fetus will develop defects on their teeth, organs, cause blindness, deafness and death.



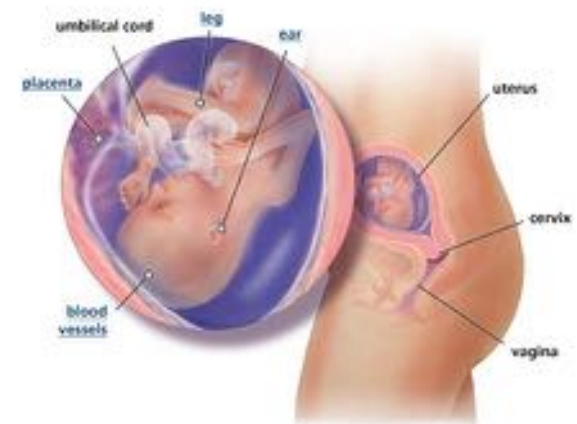
Stages of Syphilis

- ▶ If a person does not seek medical attention it can lead to more serious consequences on their body.
- ▶ Stage 1 occurs 3-90 days after exposure causing painless sores or chancre.
- ▶ Stage 2 will continue 4-10 weeks after initial infection causing a body rash/or mucous membrane lesions. Once rash is healed a person may experience no symptoms for years until their final stage
- ▶ Stage 3 will continue 3-15 years after initial infection affecting internal organs. Much damage can occur in the brain, nerves, eyes or heart.



Dental Abnormalities in Fetus with Syphilis

- ▶ A fetus at 6 weeks in utero begin to develop their teeth. From 14 weeks to 18 weeks the risk of infection increases and can spread to the fetus.
- ▶ Two dental abnormalities that can develop are mulberry molars and Hutchinson's incisors.
- ▶ Both of these abnormalities can occur together.



Mulberry Molars and Hutchinson Incisors

Mulberry Molars

- ▶ Causes enamel hypoplasia a disturbance forming enamel nodules on the molars occlusal surface.
- ▶ Usually occurring on the permanent first molars.
- ▶ Characterized by berry-like nodules or tubercles of enamel instead of cusps.



Hutchinson Incisors

- ▶ Causes localized enamel hypoplasia occurring during tooth development.
- ▶ Usually occurring on the permanent incisors.
- ▶ Characterized by a screwdriver shape from the labial view and wider cervically and narrow incisally with a notched incisal ridge



Dental Hygienist and dental care

- ▶ A patient presenting with congenital syphilis can be educated by the hygienist as to how the disease develops during pregnancy.
- ▶ Help guide the patient with any possible options of implants or veneers if they are insecure by their appearance.
- ▶ Must refer patient to their medical doctor if any sores are present.
- ▶ Educate proper oral hygiene care with tooth brushing and flossing
- ▶ The Dental Hygienist can be helpful in making a patient aware of any lesions found during the extra oral/intra oral exam. This is the importance of the assessment.

