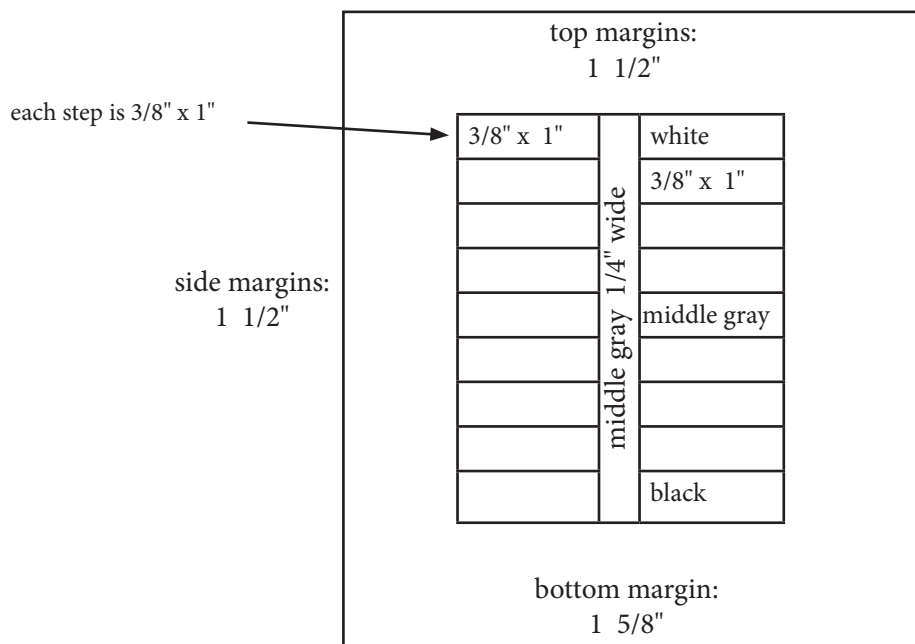


Create a grey scale in 9 steps including black and white. Draw the following **lightly** in pencil first. **Do not use tape for edges. It will leave a ridge.**

Use techniques as demonstrated in class. Use Ivory black and Permanent white to mix grey steps with your painting knife.

USE TEST STRIPS FOR ACCURATE GREY ESTIMATION. Use the guide sequence below to mix a smooth step change in your scale. Once completed, cover with tracing paper. Once graded, keep as a reference.



Bristol size for chart:

5 1/4" wide

6 1/2" high

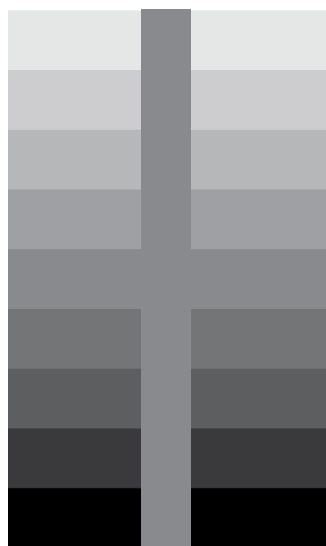
9 STEP GRAY SCALE

The size of the steps on each side of the middle strip are 3/8" x 1". Begin by painting the end steps: white and black. Using test strips, work the **middle** step first, then the middle step between the middle gray and the black. The numbers in the steps show the sequence for each half of the chart *after* you have achieved middle gray.

- Be sure to rinse your water and brush, use the painting knife to mix color, *never use the brush to mix* (you will get streaks if you do).
- if you get streaks allow the painted part to completely dry, then apply a second coat.

Also, paint a strip 1/4" wide in the middle of the steps in middle gray after you have painted the steps. See how middle gray interacts with the other steps and how the steps interact with each other.

NOTE: THIS GRAY SCALE IS *NOT* THE ONE TO MATCH. YOURS SHOULD BE MUCH BETTER THAN THIS.



1	white
2	fourth mix
3	second mix
4	third mix
5	middle gray first mix
6	third mix
7	second mix
8	fourth mix
9	black

- Each strip is .675 (5/8") x 6".

- 12"

[illegible]

11"

[illegible]