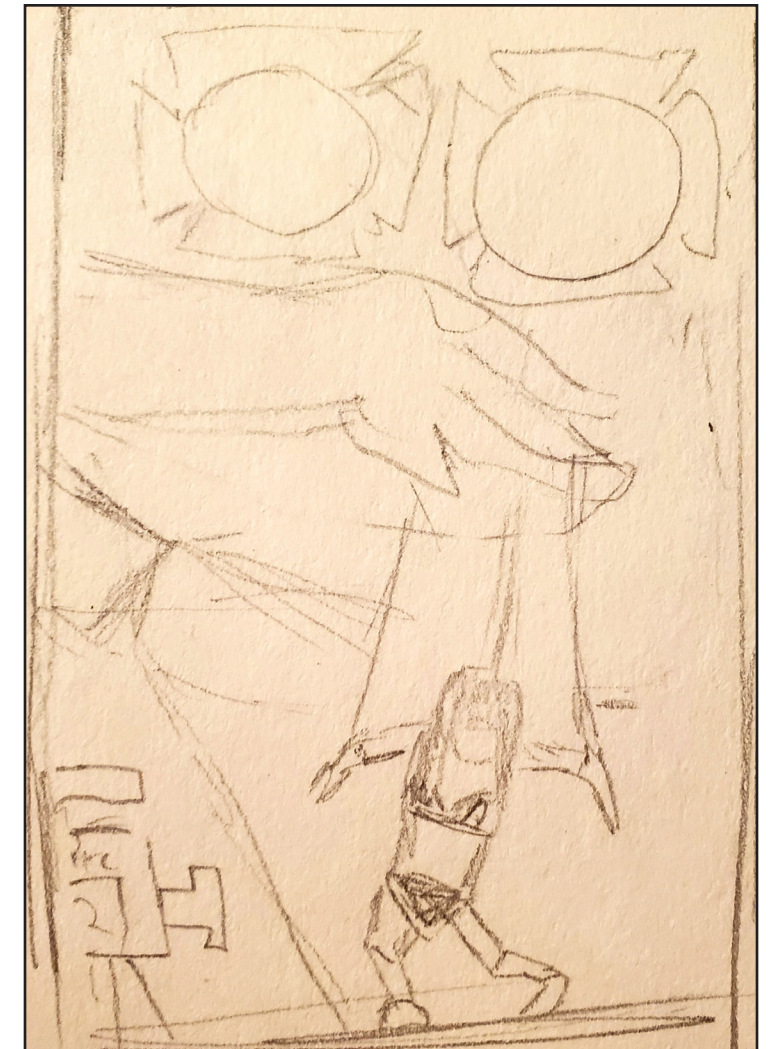


# **CONCEPTUAL PORTRAIT : BRITNEY SPEARS**

## CONCEPTUAL PORTRAIT : BRITNEY SPEARS

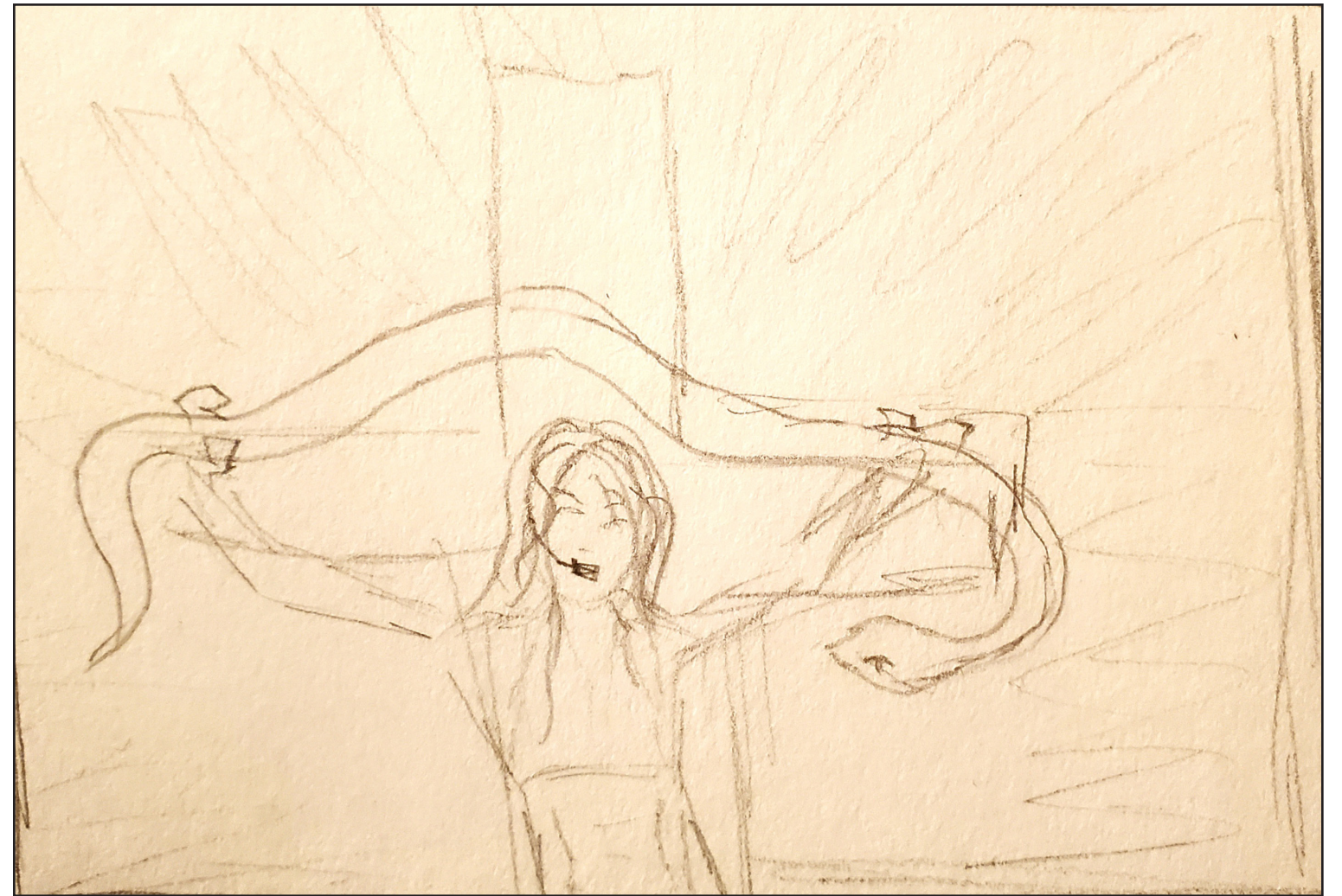
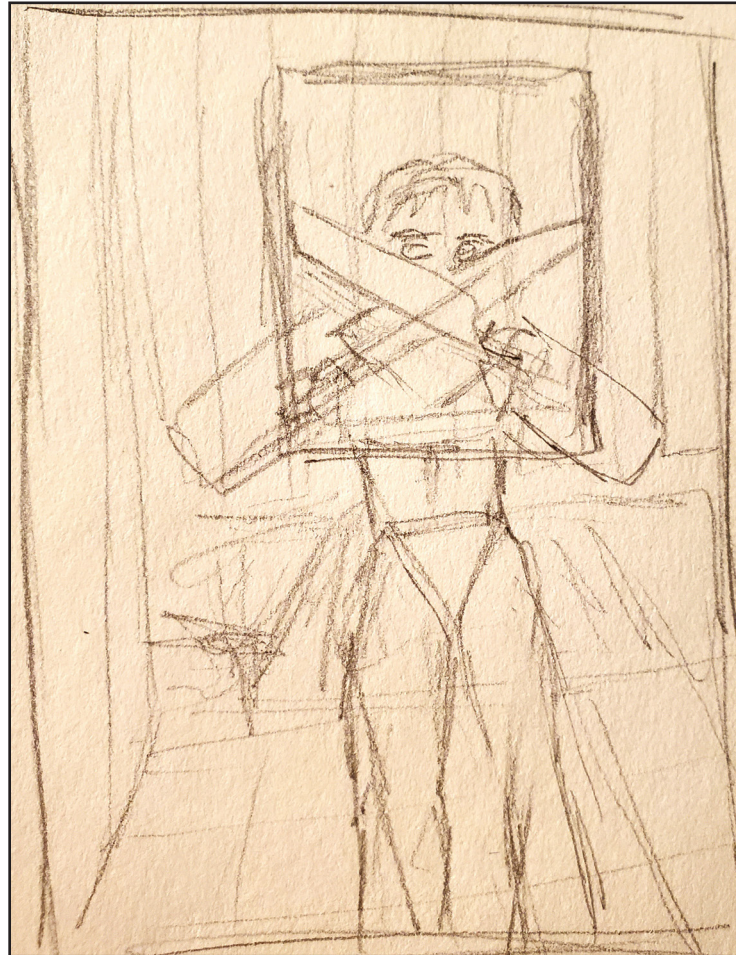
The subject that I chose for my conceptual portrait is Britney Spears. She has a long history of iconic looks and eras and that gave me a lot of material to take inspiration from. In the thumbnail stage I focused on exploring different career highlights and looks, as well as important life events or particular performances. For the first thumbnail I chose a straight-on option using transparency to show her at her highest moment in her career (“Oops I did it again” music video) and another image to show her at her lowest point (when she infamously shaved her head). The second thumbnail shows Britney in the same pose as her debut album but she crying instead of smiling and she is wearing a damaged Disney hat. The third thumbnail shows Britney during her 2007 MTV Awards performance but she is being puppeted and blinded by the stage lights.





## CONCEPTUAL PORTRAIT : BRITNEY SPEARS

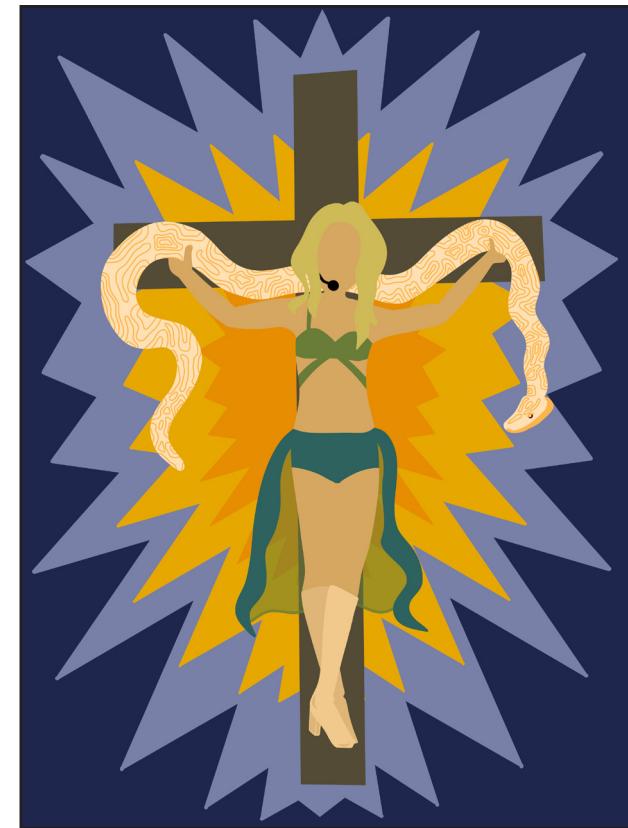
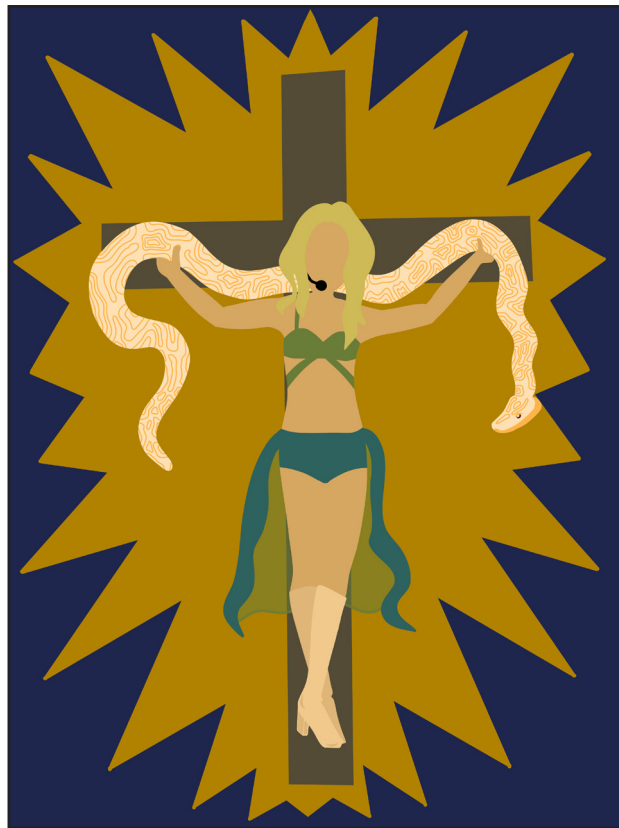
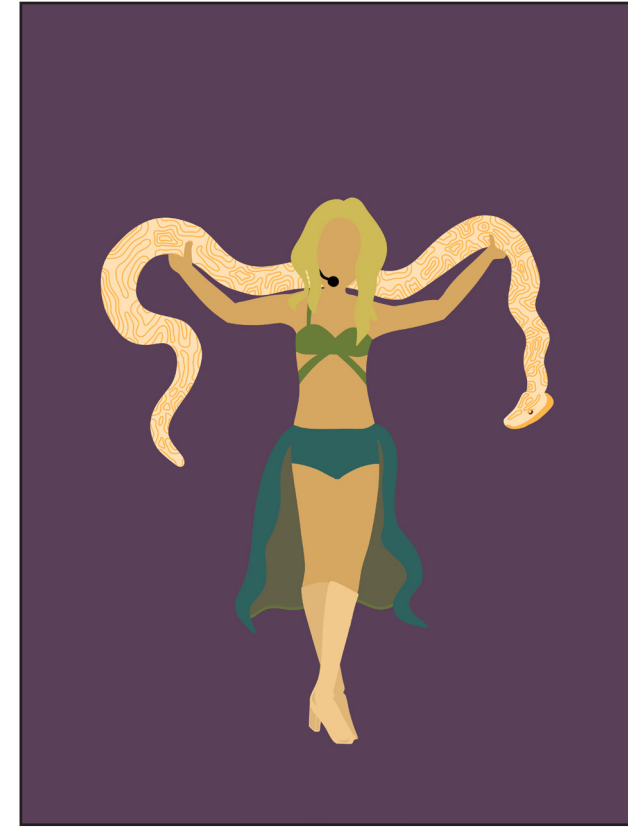
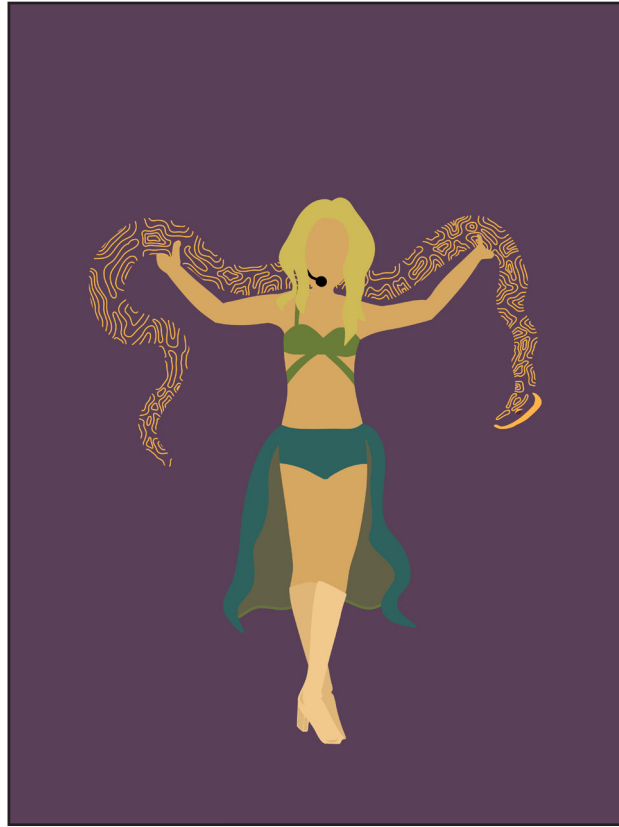
For the fourth thumbnail I drew Britney in her house dancing with fake knives; I added an instagram frame around her face to show her social media presence and scandals that usually follow her controversial posts. For the final thumbnail iteration I drew a wide shot of Britney from her 2001 MTV Movie Awards performance where she is holding a python. I justapoxed her on the cross to show how she was crucified by the media during her entire career. The snake has also become an allegory for her entire family being deceitful to her much like the snake was a symbol of evil in the Garden of Eden.





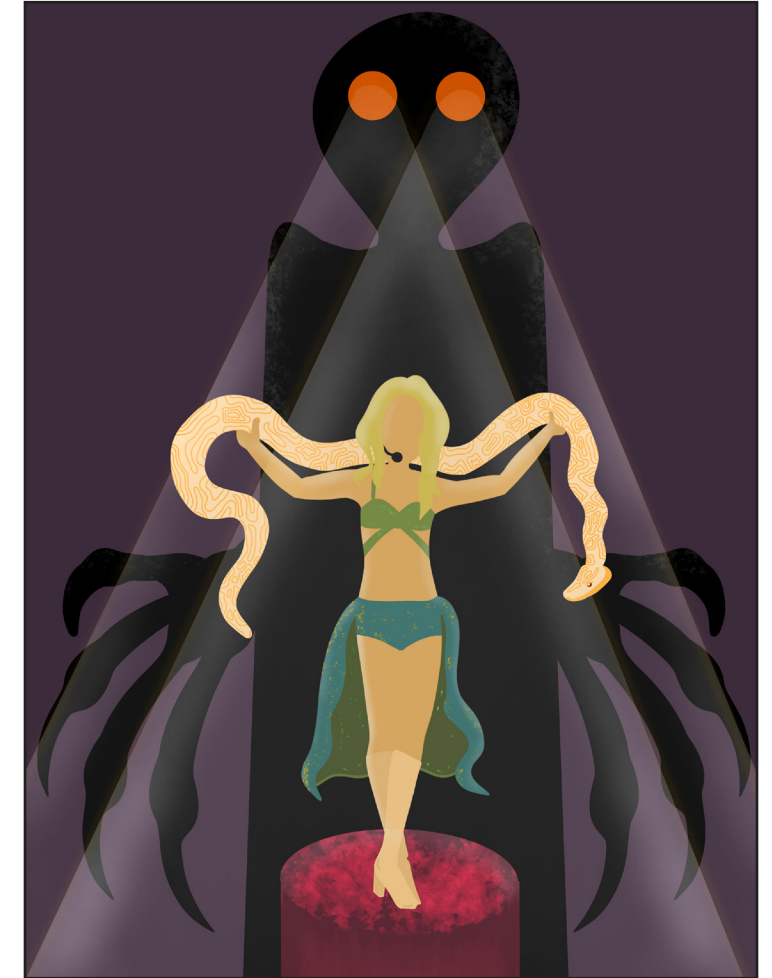
## CONCEPTUAL PORTRAIT : BRITNEY SPEARS

For the next stage I chose to experiment with the chosen thumbnail and also started my color tests. I changed the orientation of the thumbnail to better deliver the message. At this stage I was still experimenting with the background and elements themselves to see if the message was being carried across successfully. I experimented flat shapes to abstract the portrait as much as I could and I then experimented with removing all the elements I could while still keeping Britney recognizable.



## CONCEPTUAL PORTRAIT : BRITNEY SPEARS

For the final color roughs I went with simple palettes of complimentary, split complimentary, and quad palettes. I used a physical color wheel and paint swatches to come up with interesting combinations. Ultimately I chose the one in the middle because the blue background shows the luminosity of the lights the best, it bounces with the orange in the eyes and it works with the greens and magentas. I decided to change the feel of the illustration to a more clearly ominous feeling that is coming from the stage lights themselves representing Britney being prey to the media.



**Sebastian Chapman**

Information contained herein is the intellectual property of Sebastian Chapman, and is to be used by the client and/or agents for the client for the sole purpose of review pursuant to evaluating or awarding this submission. No part of this document may be used, reproduced or shared outside of this relationship. © Sebastian Chapman 2023

**CONCEPTUAL PORTRAIT :  
BRITNEY SPEARS**



Final Conceptual Portrait Illustration