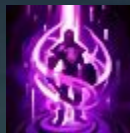


GUIDE FOR
LEAGUE OF
LEGENDS
PATCH 10.8

Contents



- [Introduction](#)
- [Changes to Death](#)
- [Best Champions](#)
- [Top Lane](#)
- [Jungle](#)
- [Mid Lane](#)
- [ADC](#)
- [Support](#)
- [About](#)
- [Connections](#)
- [Resources](#)

Introduction

Welcome to my League of Legends patch 10.8 guide. It can be tough knowing which champions to play after every patch. It's hard to keep up with what the best champions are when you're a casual player of the game. Everyone is busy and sometimes patch guides are the easiest way to understand the best way to approach this patch.

In this guide, I will go over any major changes that might make players adapt to their playstyle. I will also go over the strongest champion to play for each role.

Unfamiliar with League of Legends?

League of Legends is a multiplayer online battle arena (MOBA) where players pick a character/champion and role, get paired up with four other players to go against five other online players, and attempt to reach the common goal of destroying the enemy base. Decisions like how to move around the map, how to fight, which items to build are all factors to how a game can end.

Changes to Deaths

One major change to this patch is that solo kills (killing without the help of any teammates) will give more experience while assisted kills (kills with the help of teammates) give less experience. According to the League of Legends official patch notes:

“At levels 1-6, a champion's solo kills grant 20% more experience and assisted kills grant 20% less experience. At levels 7-8, these numbers are reduced to 10%”

This is huge because this means that junglers get less experience when they gank (attack enemy laner to help ally laner) and get a kill. Junglers already took a hit from the previous patches changes where shared minion experience was reduced. Now that shared champion kills and minion kills give less experience, junglers will have less incentive to gank a lane. A good jungler will look to rather power farm (gain experience/gold from) jungle camps this patch to try and gain a level advantage over the enemy jungler. This will bring back jungle champions who are good at farming their jungle camps quickly since they will gain experience faster than junglers who are good at ganking.

Best Champions

For this next part, I'll be giving insights on one champion that is considered very strong during this patch. There are five different roles for each five players on a team. The different roles are called Top, Jungle, Mid, ADC, and Support. There are a lot of different champions that can be played in each role since there are total champions to choose from. Each patch changes bring changes to some champions which can move them to becoming stronger or weaker.



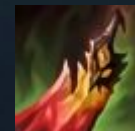
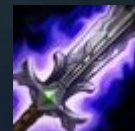
Top Lane

Wukong is one of the strongest, if not strongest top laner right now. After his champion rework in patch 10.6 with him being able to cast his ultimate twice being the biggest change, he has been a powerhouse. Before his rework he was basically only played if you were a Wukong fanatic. He currently sits on a 53.17% winrate, even after the nerfs they gave him post rework. This is considered high in League of Legends standards because this means overall, Wukong players win more games than they lose.



He's a very easy champion to play while also being very strong making him one of the strongest to play right now. He has also shown to be very successful in the jungle currently, making him a versatile pick.

Main Items to Build:

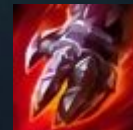
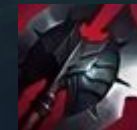
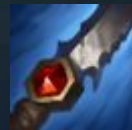


Jungle

To not be repetitive, I didn't choose Wukong, who also excels at jungling. Olaf is another great champion to play this patch. With The nerfs to shared experience, junglers who can clear their jungle camps fast are more prioritized. Olaf is a great champion when it comes to early game jungle clearing. On top of that, he is still very strong damage wise in the early game. This lets him either be very aggressive with early game ganks or passive with power farming his jungle camps. Just because experience is nerfed doesn't mean junglers shouldn't put pressure onto enemy laners. Olaf excels at both of these so he can play both playstyles and still be fairly successful.

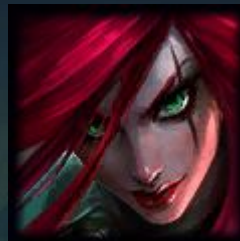


Main Items to Build:

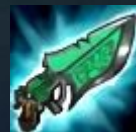


Mid Lane

Katarina is one of the strongest mid laners currently. While she hasn't received any recent changes, she's overly dominant right now. Although this champion is hard to master, she has a 53% winrate with a whopping 8% pick rate by players who have mastered her. She is an assassin who can take one kill and use it to easily snowball (use an early and small lead to turn the entire game in their favor) the game. With these current nerfs to junglers, this lets Katarina be more free to continue dominating peoples games. Like I said, she's an assassin. What's not fun about being able to run around and deleting enemy champions in a few seconds and making their gameplay miserable. If you have the time to master this champion, you will have great success with her.

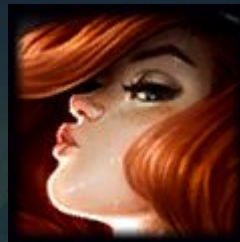


Main Items to Build:

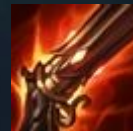
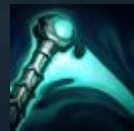


Attack Damage Carry

Miss Fortune was dominating the bot lane in the early stages of this season. With this patch, the strongest ADCs in the bot lane got nerfed such as Aphelios, Senna, and Varus. This lets Miss Fortune squeeze her way back to dominance. She's easy to play effectively, has great builds, and is highly effective in teamfights with her ultimate ability. While her win rate is barely above 50% sitting at 50.92%, she's still a great champion to play this patch. Her damage is high, her teamfight impact is high, and she scales great. There's no reason you should overlook this champion.



Main Items to Build:



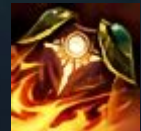
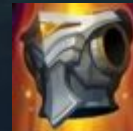
Support

Nautilus has been dominant all season. He has a lot of tools to engage onto the enemy champion making him be a playmaker. This means you can decide how the early game plays out with your engages. On top of that he has insane damage for a tank support. Supports have the least gold income so high base damage is always something that people welcome in supports. There's also a huge bug on Nautilus which hasn't been fixed. More than occasionally, Nautilus' hook ability will hit targets not in his hook range. This is infuriating for enemy players, but if you can abuse a bug to win games, why not?



While being able to easily engage on enemy champions, Nautilus can also take mobility boots and roam around the map early on, helping the team all around the map, rather just bot lane. You can choose either playstyle of dominating bot lane through your engages, or help other laners dominate by roaming to them.

Main Items to Build:



Conclusion

At the end, these are all great champions to play this patch. This doesn't mean you can't play your favorite champions and still have success. The champions I named are just few ones that are strong this patch overall, meaning if you play them well, you can have success on them even if you're new at the champion.

Different people also have different perspectives on champions so you might see people with differentiating opinions.

About

This guide was made by me, only a casual League of Legends player. Although I've only peaked high gold in rank, this was still something I really enjoyed creating. When looking for guides as a player, there's always so many different ones that you end up not knowing which one is the most reliable. Although me creating this added onto the massive pool of different guides, it was still great to be able to research into the patch myself and give an insight.

I chose this design for my website because it felt really straightforward for League players to understand. One page for each topic, including roles and a general overview. Since some people might not be familiar with League of Legends, I tried to define some of the in game terms used or even rephrase them so non players can understand as well.

Connections

If you'd like to connect more with the League of Legends community, or even myself on League, here is some information to help you do so:

Official League of Legends Subreddit:

<https://www.reddit.com/r/leagueoflegends/>

(This is the largest LoL subreddit where people like to new content for the game, news about the professional side of League, and even funny videos of League)

Discord for r/leagueoflegends:

<https://discord.com/invite/lol>

(This is the discord for the official league of legends subreddit. You can chat with players or find players to play with in this server)

Subreddit dedicated to helping players learn:

<https://www.reddit.com/r/summonerschool/>

(While the official LoL subreddit is for everything, this subreddit is specific to helping players better understand the game. You can guarantee someone to help you out with any questions you have here)

My in-game username:

alviee

Gold 3, M7 Lee Sin 250K+ Mastery Points



Resources

- “Patch 10.8 Notes.” League of Legends,
na.leagueoflegends.com/en-us/news/game-updates/patch-10-8-notes/
- Champion.gg - League of Legends Stats by Champion Role for the Current Patch,
champion.gg/statistics/
- “NEW Patch 10.8 TIER LIST - League of Legends Guide”, Skill Capped Challenger LoL Guides, Youtube,
<https://www.youtube.com/watch?v=x2nYpwF7MLs>