

# Earth's Pollution

BudgetDumpster.com<sup>®</sup>

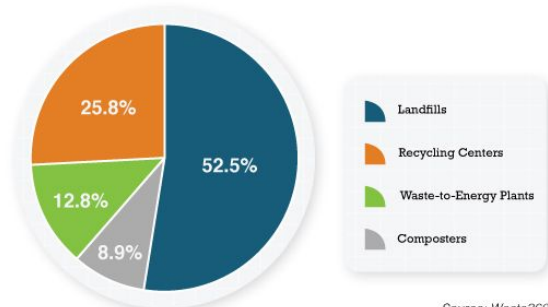
WHERE DOES TRASH GO?

Eric Huang

# Earth's Pollution In The Last Century

- ❖ The United States is known for its mass produced of municipal solid waste in the entire, generating about 268 million tons every year.
- ❖ More than 70% of the Earth is covered with water bodies that play an important role in our day-to-day life and form an indispensable part of our existence.
- ❖ Ocean pollution is caused by the introduction of toxic materials and harmful pollutants such as agricultural and industrial waste, chemicals, oil spills, and plastic litter into the ocean waters.

**Percent of MSW in Waste Facilities**



Source: Waste360

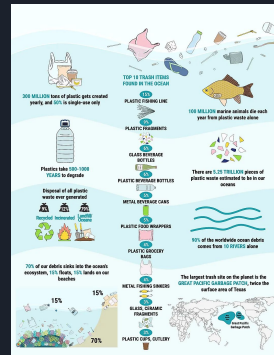


# Where Does it End Up?

- ❖ People often leave trash on beaches or throw it into the water in boats or offshore facilities such as oil rigs.
- ❖ Sometimes they wind up in the ocean due to storms, drains, canals and inhuman activities such as littering without caring about the consequences.
- ❖ The most large quantity single-use is plastic. Plastic can almost never go away because it takes 500-1000 years at most to decompose. This causes marine life in going extinct.
- ❖ 70% of the debris sink in the ocean's ecosystem, 15% floats, and 15% lands on beaches.
- ❖ Notice on the map, there is a large island made up of trash. It is larger than the state of Texas, one of the largest states in the US.

# Where Does it Go?

- ❖ The ocean sewage is often the cheapest yet easiest way to dispose of unwanted belongings. Untreated sewage contains lethal substances that find their way to the ocean waters through sewer systems.
- ❖ Trash is usually dumped, recycled or in some cases, it's used to make energy.
- ❖ More than 3000 landfills exist in the United States, and approximately 52% of our country's garbage ends up in one of them.
- ❖ Landfills are meant to store waste, not break them down.
- ❖ There is trash incinerators which are large industrial furnaces design to burn municipal solid waste.
- ❖ Another form of turning waste to energy are anaerobic digesters, a biological process using microorganisms to turn organic materials into energy and fertilizer.



# Ways To Prevent

- ❖ There are programs often being funded to pick up trash via machine or people.
- ❖ Use less of plastic and rely on using recyclable materials instead. Drink from a clean fountain or drink from a reusable container.
- ❖ Recycle and Reuse, but mainly recycle.
- ❖ A majority of the people in the United States love to go out and eat, especially in franchises whereas using plastic or styrofoam. Instead of always eating out, you could: Cook your own food.





# References

- ❖ “Environmental and Health Impacts of Open Burning | Wisconsin DNR.” Dnr.wisconsin.gov, [dnr.wisconsin.gov/topic/OpenBurning/Impacts.html](https://dnr.wisconsin.gov/topic/OpenBurning/Impacts.html).
- ❖ “Where Does Our Trash and Garbage Go? | Budget Dumpster.” @BudgetDumpster, 2019, [www.budgetdumpster.com/resources/where-does-trash-go.php](https://www.budgetdumpster.com/resources/where-does-trash-go.php).
- ❖ “What Causes Ocean Pollution?” WorldAtlas, 23 May 2018, [www.worldatlas.com/articles/what-causes-ocean-pollution.html](https://www.worldatlas.com/articles/what-causes-ocean-pollution.html).