



# • Bindlestiff Family Cirkus • Lighting Design and • Programming

.....  
Olivia VanBuskirk

# Table of Contents

01

## Paperwork

GANTT, WBS,  
Vectorworks, Magic  
Sheets, and Lightwright



02

## Programming

Development with EOS  
program and cueing

03

## Problems and Outcomes

Issues faced and resolved  
over course of project



04

## Final Result

Comparison between  
shows and what I've  
learned

# Bindlestiff Lighting Schedule

2023

Feb

Mar

Apr

May

2023

Today

**Design plot** Feb 7 - Feb 21

**Meet lighting crew** Feb 23 - Feb 23

**Install plot** Feb 23 - Mar 2

**Focus lights** Mar 7 - Mar 9

**Write cues** Mar 9 - Mar 9

**Run show** Mar 14 - Mar 14

**Take notes** Mar 14 - Mar 21

**Make changes** Mar 30 - Mar 30

**Write cues** Apr 3 - Apr 3

**Run show** Apr 4 - Apr 4

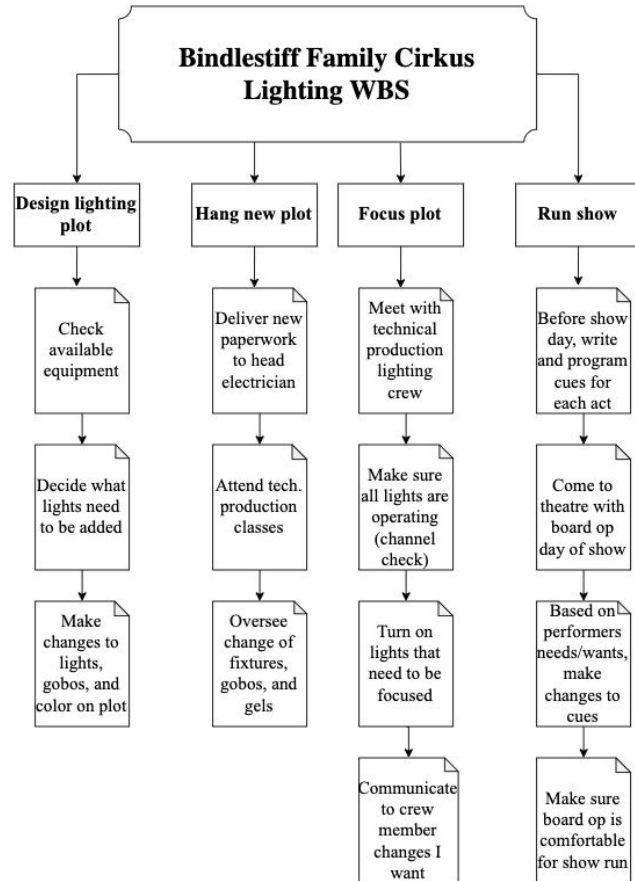
**Take notes** Apr 4 - Apr 12

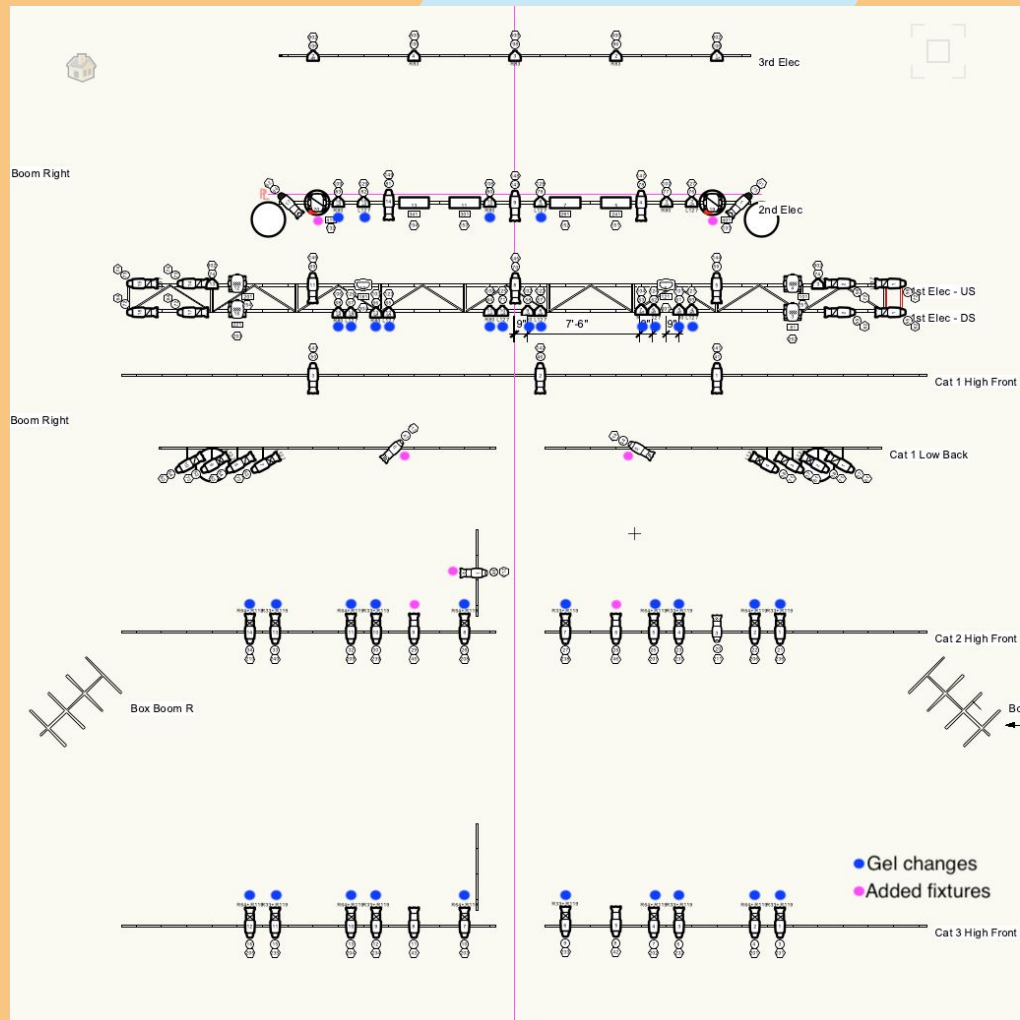
**Make changes** Apr 18 - Apr 27

**Focus lights** Apr 27 - Apr 27

**Refocus, write cues** May 8 - May 8

**Run show** May 9 - May 9





## Channel Hookup

Chan	Pos	Unit#	Instrument Type & Accessory & Load	Purpose	Clr	Dm Ad
(103)	1st Elec - DS	13	S4 PAR WFL 575w	Cool Back	R80	66
(104)	1st Elec - DS	7	S4 PAR WFL 575w	Cool Back	R80	63
(105)	1st Elec - DS	11	S4 PAR WFL 575w	Cool Back	R80	64
(106)	1st Elec - DS	15	S4 PAR WFL 575w	Cool Back	R80	68
(107)	2nd Elec	3	S4 PAR WFL 575w	Cool Back	R80	77
(108)	2nd Elec	10	S4 PAR WFL 575w	Cool Back	R80	80
(109)	2nd Elec	16	S4 PAR WFL 575w	Cool Back	R80	83
(121)	1st Elec - DS	4	S4 PAR WFL 575w	Warm Back	L127	60
(122)	1st Elec - DS	8	S4 PAR WFL 575w	Warm Back	L127	57
(123)	1st Elec - DS	12	S4 PAR WFL 575w	Warm Back	L127	65
(124)	1st Elec - DS	6	S4 PAR WFL 575w	Warm Back	L127	62
(125)	1st Elec - DS	10	S4 PAR WFL 575w		L127	71
(126)	1st Elec - DS	14	S4 PAR WFL 575w	Warm Back	L127	67
(127)	2nd Elec	2	S4 PAR WFL 575w	Warm Back	L127	76
(128)	2nd Elec	8	S4 PAR WFL 575w	Warm Back	L127	79
(129)	2nd Elec	15	S4 PAR WFL 575w	Warm Back	L127	82

Total of 90  
channels

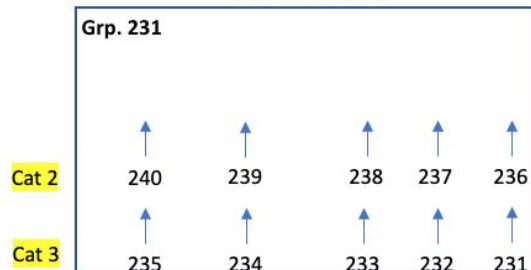
## Channel Hookup

Chan	Pos	Unit#	Instrument Type & Accessory & Load	Purpose	Clr	Dm Ad
(131)	2nd Elec	19	Martin MAC 250 Entour 250w	Automated		1/ 40 1
(132)	2nd Elec	20	Martin MAC 250 Entour 250w	Automated		1/ 41 9
(141)	Cat 1 High Front	1	Source 4 19deg 575w	Pool/Spare		41
(142)	Cat 1 High Front	2	Source 4 19deg 575w	Pool/Spare		46
(143)	Cat 1 High Front	3	Source 4 19deg 575w	Pool/Spare		50
(144)	1st Elec - US	5	Source 4 19deg 575w	Pool/Spare		59
(145)	1st Elec - US	8	Source 4 19deg 575w	Pool/Spare		70
(146)	1st Elec - US	11	Source 4 19deg 575w	Pool/Spare		69
(147)	2nd Elec	4	Source 4 19deg 575w	Pool/Spare		78
(148)	2nd Elec	9	Source 4 19deg 575w	Pool/Spare		14 3
(149)	2nd Elec	14	Source 4 19deg 575w	Pool/Spare		81
(151)	2nd Elec	5	ETC Lustr 21+Light Acc C Clamp 250w			1/ 24 1
(152)	2nd Elec	7	ETC Lustr 21+Light Acc C Clamp 250w			1/ 28 1
(153)	2nd Elec	11	ETC Lustr 21+Light Acc C Clamp 250w			1/ 30 1
(154)	2nd Elec	13	ETC Lustr 21+Light Acc C Clamp 250w			1/ 34 1

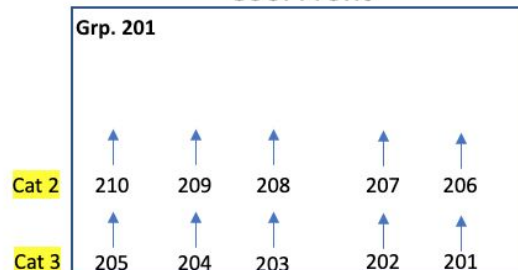
Bindlestiff Family Cirkus  
 Magic Sheet  
 LD: Olivia VanBuskirk  
 HE: Hesler Garcia

p. 1 of 3

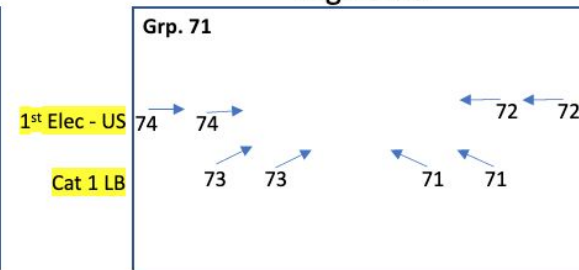
### Warm Front



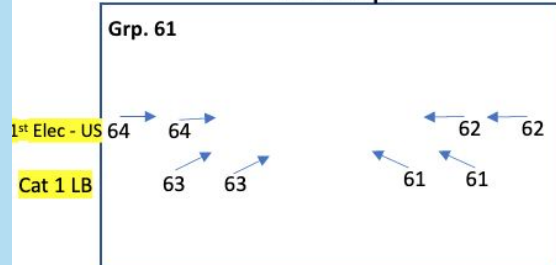
### Cool Front



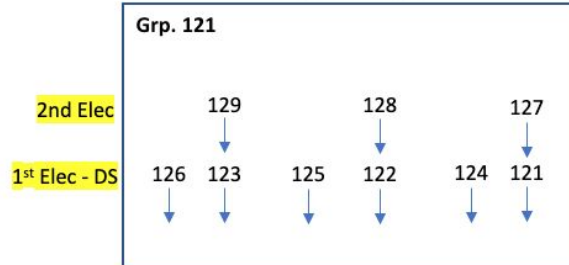
### High Side



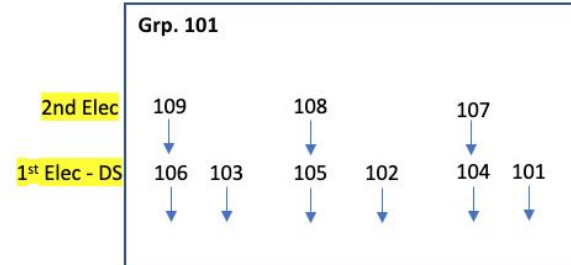
### Breakup



### Warm Back

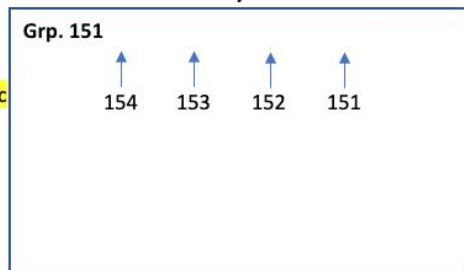


### Cool Back



## Cyc

2nd Elec

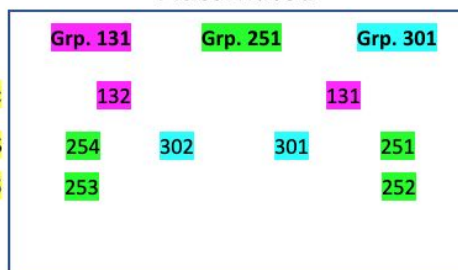


## Automated

2nd Elec

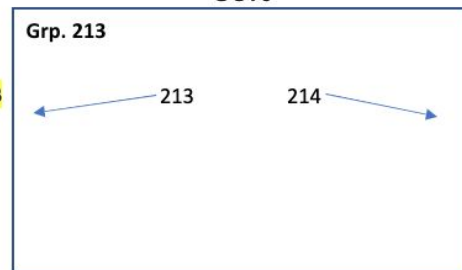
1st Elec - US

1st Elec - DS



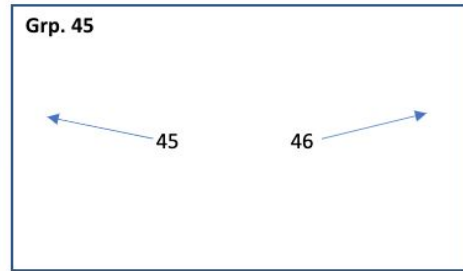
## Scenery Posters - Soft

Cat 1 LB



## Scenery Posters - Hard

Cat 2

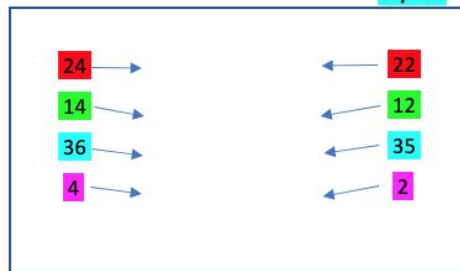
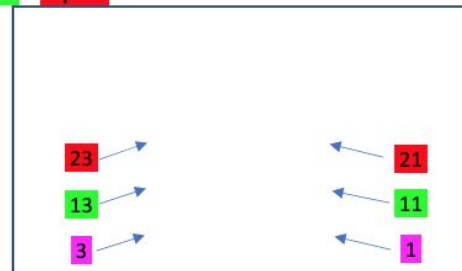
Mid-Stage Booms  
(Front View)

Grp. 35

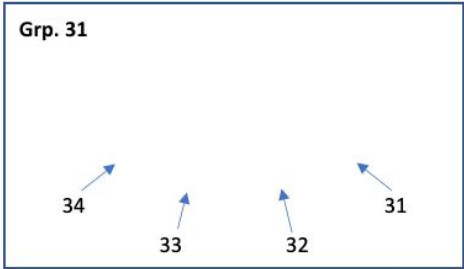
Grp. 1

Grp. 11

Grp. 21

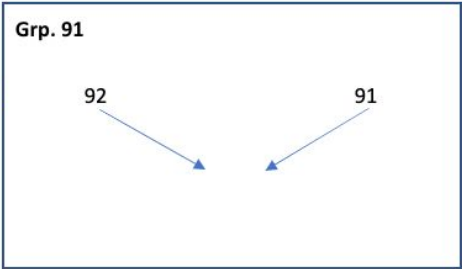
Downstage Booms  
(Front View)

Floor



Cross back

2nd Elec



# Programming

## March

I preprogrammed the show and watched it remotely. This was a good opportunity for me to see how my cues and plot translated on a livestream.

**31 Cues**  
**14 performances**

## April

I added a couple moving light elements and effects to the show. This gave me an opportunity to work with parts of the software I was not as well-versed in.

**37 Cues**  
**16 performances**

## May

I further built upon my skills with moving lights and effects. I incorporated effects into any performance I thought could benefit from having some movement.

**37 Cues**  
**16 performances**

# Problems and Outcomes



## Problem

When I was cueing after installing moving lights, my MAC Entours were not working. I went through troubleshooting to find no DMX was run.



## Outcome

I was able to run DMX to both fixtures and I learned that I should test new equipment after hang.



## Problem

I had never run a lighting focus before, so knowing what to look for and how to give direction was a new challenge for me.



## Outcome

While focusing, I had people such as Ellie and John Robinson there to point out anything that I was not noticing and allowing me to correct these issues.



## Problem

Unexpected scenery being added last minute and having scenery pieces being moved from the place I expected.



## Outcome

I had to make focusing adjustments alone before I began my cueing and do my best to not have my lights hit new scenery. I learned communication amongst departments is crucial.

March  
14th,  
2023

PC: John Huntington





March  
14th,  
2023

PC: John Huntington

March  
14th,  
2023

PC: John Huntington





March  
14th,  
2023



PC: John Huntington



April  
4th,  
2023

© John Huntington 2023

April  
4th,  
2023



© John Huntington 2023



© John Huntington 2023

April  
4th,  
2023



April  
4th,  
2023



© John Huntington 2023

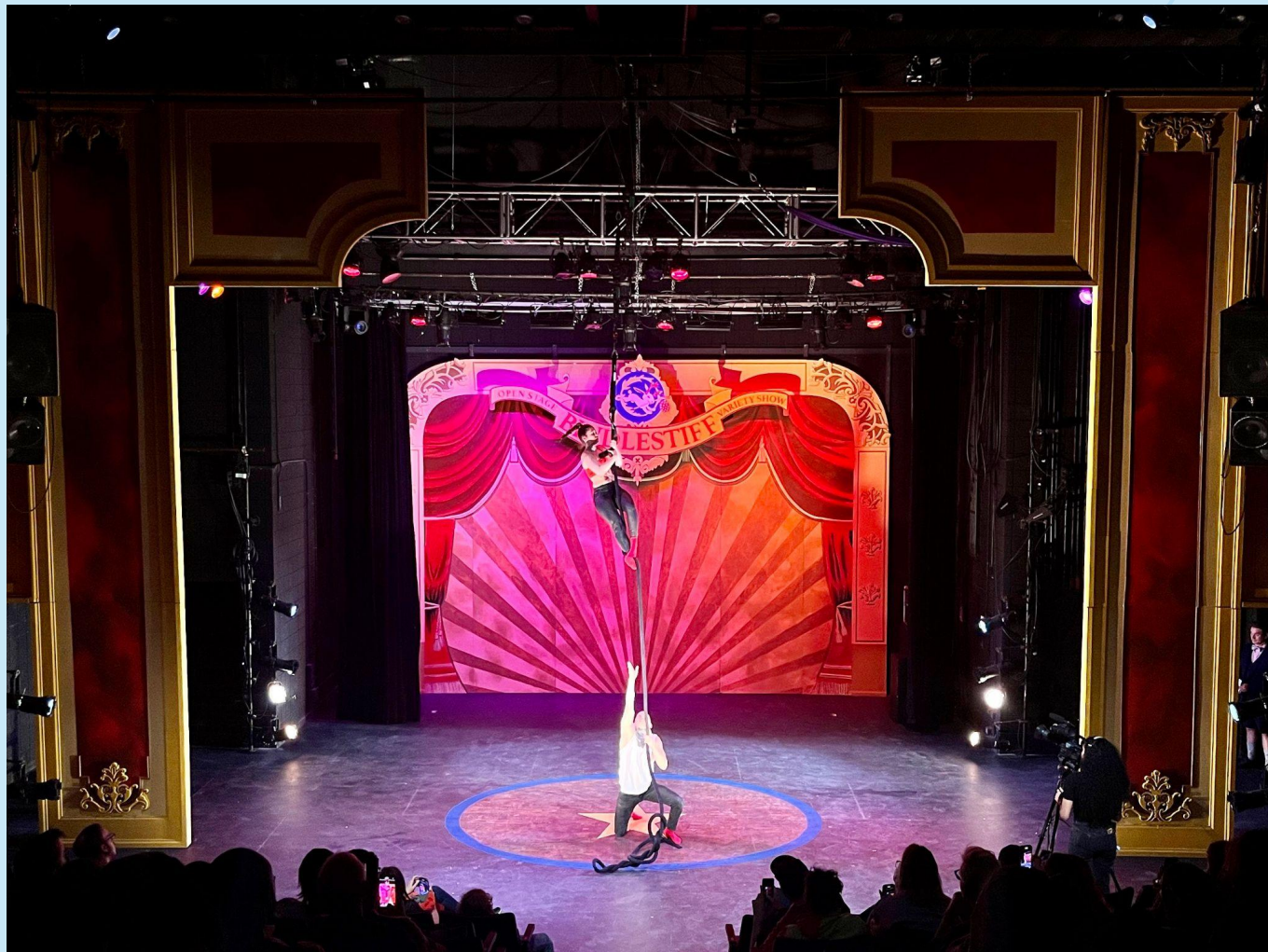


May  
9th,  
2023

PC: Adam Valle

May  
9th,  
2023

PC: Adam Valle





May  
9th,  
2023

PC: Adam Valle

May  
9th,  
2023

PC: John Huntington



# *Final Thoughts*

---

# *An Enormous Thank You to*

*Miguel Valderrama*

*Ellie Mallardi*

*John Robinson*

*Hesler Garcia & the Technical Production crew*

*Bindlestiff Family Cirkus & everyone who  
attended the shows*