

More Than a Wall

Osl_vision
Odvens Saint Louis

Project Description:

This project aims to enhance worship services and events at ECCC Church by installing a dynamic video wall powered by ProPresenter. As the project manager, I am dedicated to ensuring the successful implementation of this project within a six-week timeframe."

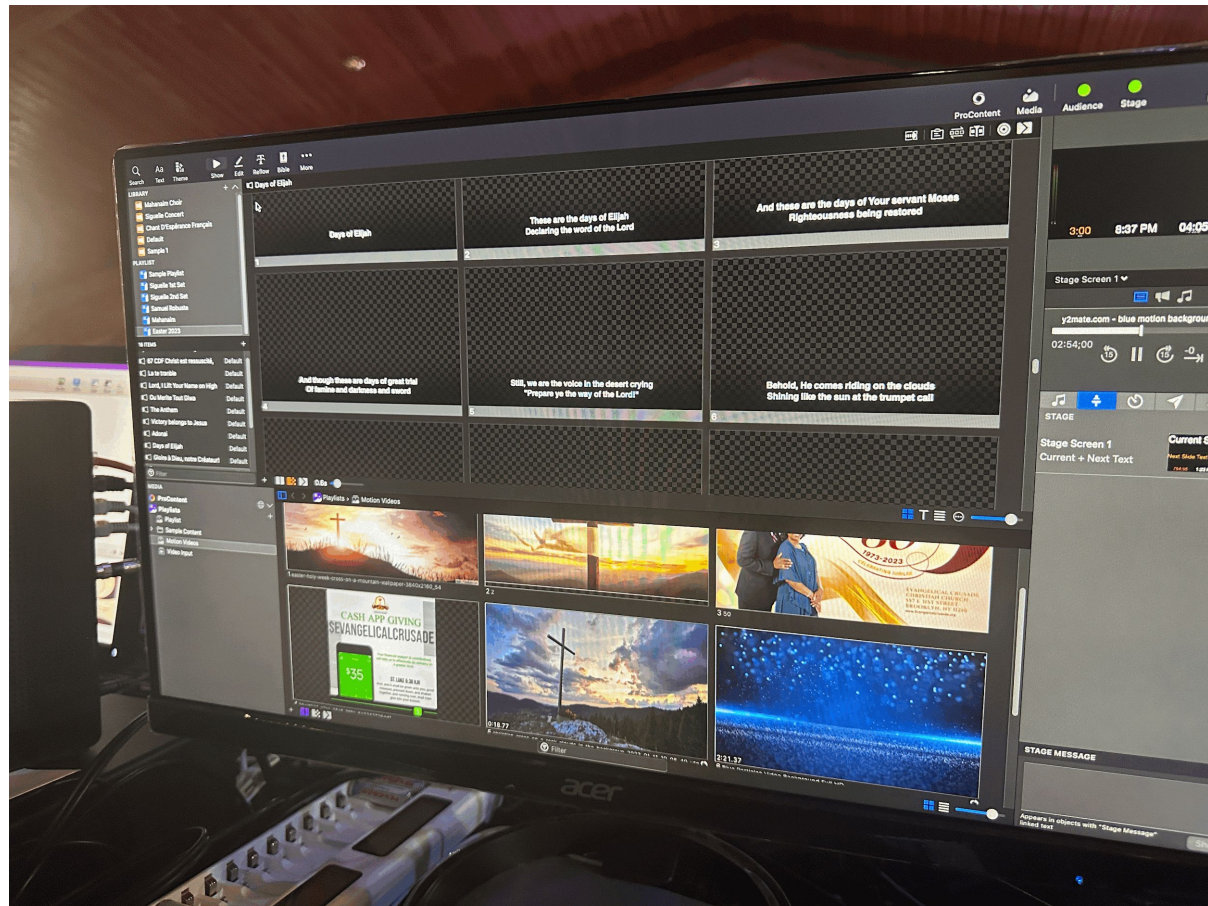


	A	B	C	D	E	F	G
1	OM: ODVENS SAINT LOUIS						
2	Title: more than just a wall						
3							
4	Quantity	Unit	Material	estimate unit cost	estimate total	budget unit cost	budget
5	2	Each	M1 Mac mini	\$1,200	\$2,400	\$1,100	2200
6	1	Each	Decklink Duo:	\$500	\$500	\$450	450
7	4	Each	Cat 6 wires	\$200	\$800	\$250	1000
8	3	Each	Sonnet Echo Express SE	\$500	\$1,500	\$625	1875
9	8	Each	Dedicated 20-amp plugs	98	\$784	\$100	800
10				Subtotal	\$5,984		6325
11				tax	\$449		
12				SUBTOTAL	\$6,433		
13				shipping	\$500		
14				Subtotal	\$6,933		
15				contingency 15%	\$14,314		
16				Total	\$2,147.16		
17					\$16,462		6325
18							

Propresenter

Makes high-quality live productions simple to achieve, displaying song lyrics, sermon notes, graphics, videos, and more.

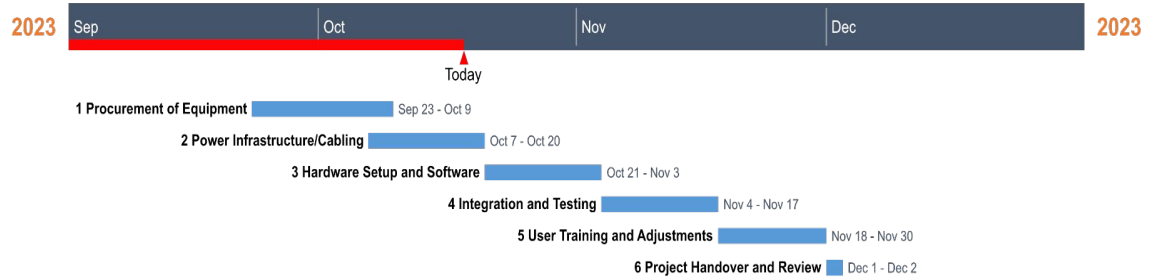
The subscription of propresenter is about 500 dollars and they have a 24/7 live crew that will help their customers if you are having any sort of issues



Methods

- "For this project, we will employ specific methods and resources. We've chosen hardware, including an M1 Mac mini, Decklink Duo, and Sonnet Echo Express SE IIIe Thunderbolt 3 Expansion Chassis for PCIe, totaling \$2,200. Additionally, we'll be using four Cat 6 wires and three dedicated 20-amp plugs, incurring an installation cost of \$1,200. Our labor costs involve 15 skilled workers, each working 40 hours a week for six weeks at a rate of \$40 per hour, amounting to \$144,000."

More than a wall





Project Deliverables

The key deliverables of this project include a fully operational video wall system integrated with ProPresenter, ensuring high-quality video output and smooth content playback.

Required Resources

To successfully execute this project, we require 15 skilled workers for installation and setup, electricians for installing dedicated power plugs, and a dedicated project manager (myself) to oversee the project, ensuring adherence to the schedule and budget

