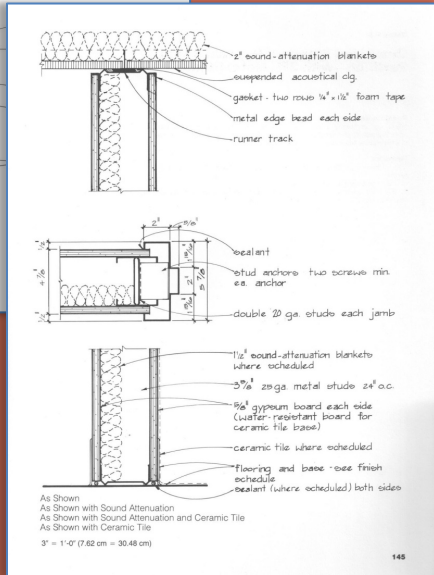
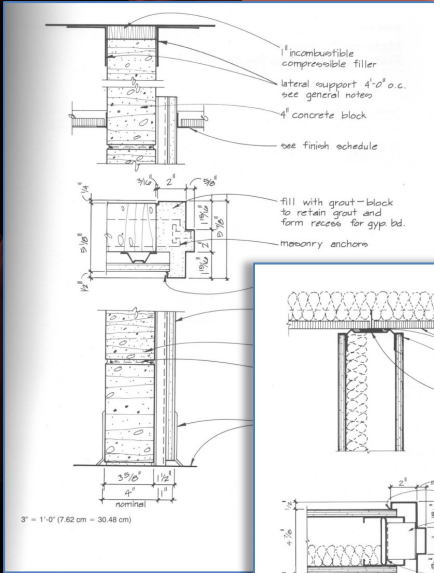




ARCH 2431 Building Technology III Steel Assembly & Partition Types

Building Information Modeling (BIM) with Revit

Partition Types



Prof. Paul C. King, Course Coordinator
 Prof. Blake Kurasek
 Prof. Justin Sherman
 Prof. Jieun Yang

Pking@CityTech.Cuny.Edu
 Bkurasek@CityTech.Cuny.Edu
 Jsherman@CityTech.Cuny.Edu
 Jyang@CityTech.Cuny.Edu

1.23

Vela Townhomes - Arquitectonica: Partition Types

Partition Types

- Sample Sheet
- Construction Details : GWB
 - 7 1/4"
 - 4 7/8"
 - 4 1/4"
 - 6 1/8" (2 hr)
 - Shaft (1 hr)
 - Chase (1 hr)

- Construction Details : CMU
 - 4" Nominal
 - 8" Nominal
 - 4" Furring
 - 8" Furring
 - 8" Furring on 2 sides

- CMU Ratings
- Assignment
- USG Selector
- Exercises
- Wrap Up

Building Technology III

12 FIREWALL U336
SCALE: N.T.S.

14 AT DEMISING WALL
SCALE: 1 1/2"=1'-0"

13 EXTERIOR / INTERIOR CONDITION AT DEMISING WALL
SCALE: 1 1/2"=1'-0"

12 EXTERIOR WALL
SCALE: 1 1/2"=1'-0"

11 DEMISING WALL - STC 56 2 H.F.R. - PLAN DETAIL
SCALE: 1 1/2"=1'-0"

JOINT DETAILS
SCALE: N.T.S.

10 WATER RESISTANT SAUNA AND BATH WALL PARTITION
SCALE: 1 1/2"=1'-0"

9 GYP. BD WATER RESISTANT WALL PARTITION
SCALE: 1 1/2"=1'-0"

8 DEMISING FOUNDATION WALL CONDITION W/O CELLAR
SCALE: 1 1/2"=1'-0"

7 WALL PARTITION 1 HR.
SCALE: 1 1/2"=1'-0"

6 LOW WALL PARTITION
SCALE: 1 1/2"=1'-0"

5 SAUNA PARTITION
SCALE: 1 1/2"=1'-0"

4 SHAFT - 2 HOUR F.R. WALL PARTITION
SCALE: 1 1/2"=1'-0"

3 CEMENT BD WATER RESISTANT WALL PARTITION
SCALE: 1 1/2"=1'-0"

2 CHASE WALL PARTITION
SCALE: 1 1/2"=1'-0"

1 GYP. BD. WALL PARTITION
SCALE: 1 1/2"=1'-0"

VELA TOWNHOMES
1801 AVENUE ROAD,
BROOKLYN OF EGGWATER,
GREENWICH COUNTRY,
NEW YORK

Project by:
Reisen Global Partners LLC
1801 AVENUE ROAD
BROOKLYN OF EGGWATER
GREENWICH COUNTRY
NEW YORK

Architect:
ARQUITECTONICA
1801 AVENUE ROAD
BROOKLYN OF EGGWATER
GREENWICH COUNTRY
NEW YORK

Building & Revisions as Constructed
FEBRUARY 2007

Partition Types

Project Number: **22001.00**

Revision #	Revision Date
1. BLDG. #	11.29.2005
2. BLDG. #	01.10.2007

Drawn by:
Checked by:
Date: **02.28.2007**

Scale: **A3.0.53**

ARQUITECTONICA NEW YORK, P.C.

Partition Types

Construction Details for Commercial Buildings

Partition Types

- Sample Sheet
- Construction Details : **GWB**
 - 7 1/4"
 - 4 7/8"
 - 4 1/4"
 - 6 1/8" (2 hr)
 - Shaft (1 hr)
 - Chase (1 hr)

- Construction Details : **CMU**
 - 4" Nominal
 - 8" Nominal
 - 4" Furring
 - 8" Furring
 - 8" Furring on 2 sides

CMU Ratings

- Assignment
- USG Selector
- Exercises

Wrap Up

Construction Details for Commercial Buildings

A Graphics File for Architects

Glenn E. Wiggins AIA

\$27.50
USA

Construction Details for Commercial Buildings

140 Essential Construction Details—A Basic Graphics File for Commercial Building Projects

- Site Details
- Building Envelope Details
- Wall Partition Details
- Reflected Ceiling Plan Details
- Vertical Transportation Details
- Toilet-Room Details

All details are presented as large-scale graphics accompanied by comments on usage and specific remarks about particulars of material and construction. They can be photocopied and redlined for project-specific, custom details. A basic workbook no architect, drafter, intern, or student should be without.

320 pages. 8 1/2 x 11 (22 x 28 cm). 140 black & white illustrations. Index.

Whitney Library of Design
an imprint of Watson-Guptill Publications
1515 Broadway, New York, NY 10036

Cover design: Jay Anning
Cover photograph: Thomas Haynes
Cover illustration: Glenn E. Wiggins

ISBN 0-8230-0926-2

9 780823 009268

Printed in U.S.A.

**1 LAYER 5/8" GWB ON EACH SIDE OF
6" METAL STUD FRAME**

Partition Types

7 1/4" Partition 6" Stud (non-rated)

Partition Types

- Sample Sheet
- Construction Details : GWB
 - 7 1/4"
 - 4 7/8"
 - 4 1/4"
 - 6 1/8" (2 hr)
 - Shaft (1 hr)
 - Chase (1 hr)
- Construction Details : CMU
 - 4" Nominal
 - 8" Nominal
 - 4" Furring
 - 8" Furring
 - 8" Furring on 2 sides

- CMU Ratings
- Assignment
- USG Selector
- Exercises
- Wrap Up

Detail 4-1

**Standard Gypsum Board Partition—
with 6" Metal Studs**

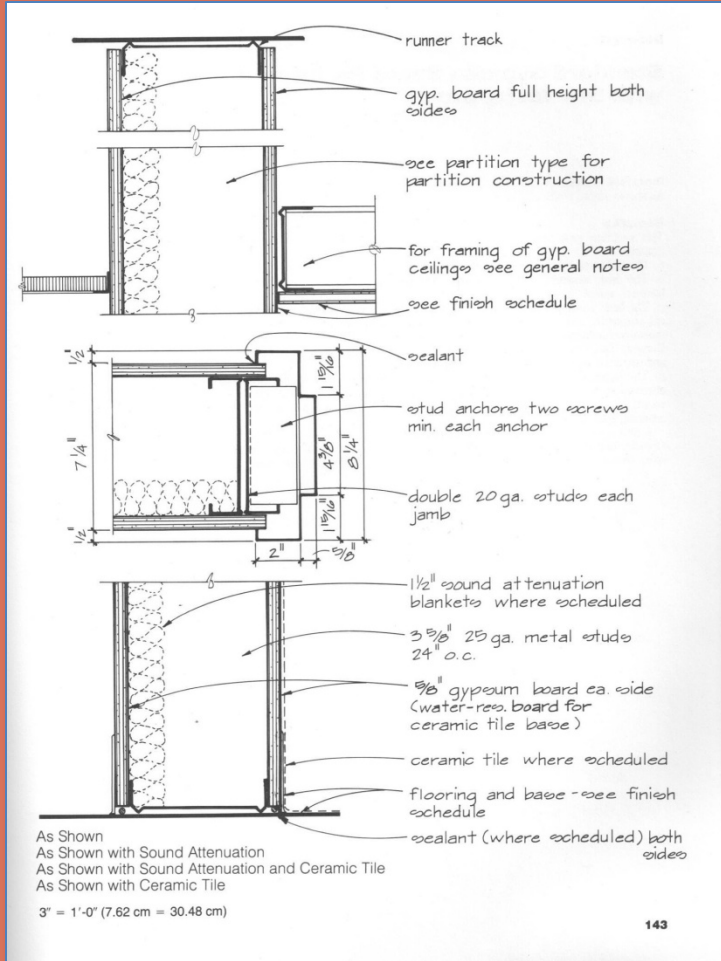
Possible Uses
As shown where 6" (15.24 cm) metal studs form the frame.

Remarks
This partition type detail incorporates four different conditions into a single graphic:

- a. The basic assembly, noted "As Shown."
- b. The basic assembly treated for acoustical purposes with sound-attenuation blankets, noted "As Shown with Sound Attenuation."
- c. The basic assembly treated both with sound-attenuation blankets, for acoustical purposes, and with ceramic tile, for conditions where mild to moderate moisture conditions might exist. Noted "As Shown with Sound Attenuation and Ceramic Tile," this partition is typical in toilet rooms that have tile on the walls and require acoustical separation from adjoining spaces.
- d. The basic assembly with ceramic tile on the walls, but without the sound attenuation. Noted "As Shown with Ceramic Tile," this partition is typical in toilet rooms that have tile on the walls but do not require acoustical separation from adjoining spaces.

A fifth condition would be to revise the gypsum board note to read, "Type X Gypsum Board," thereby creating a one-hour fire-rated partition. The variations using sound attenuation and tile could then be applied to the fire-rated partition.

- As Shown
- As Shown with Sound Attenuation
- As Shown with Sound Attenuation & Ceramic Tile
- As Shown with Ceramic Tile



**1 LAYER 5/8" GWB ON EACH SIDE OF
3 5/8" METAL STUD FRAME**

Partition Types

4 7/8" Partition 3 5/8" Stud (non-rated)

Partition Types

- Sample Sheet
- Construction Details : GWB
 - 7 1/4"
 - 4 7/8"
 - 4 1/4"
 - 6 1/8" (2 hr)
 - Shaft (1 hr)
 - Chase (1 hr)
- Construction Details : CMU
 - 4" Nominal
 - 8" Nominal
 - 4" Furring
 - 8" Furring
 - 8" Furring on 2 sides

CMU Ratings

- Assignment
- USG Selector
- Exercises
- Wrap Up

Detail 4-2

**Standard Gypsum Board Partition—
with 3 5/8" Metal Studs**

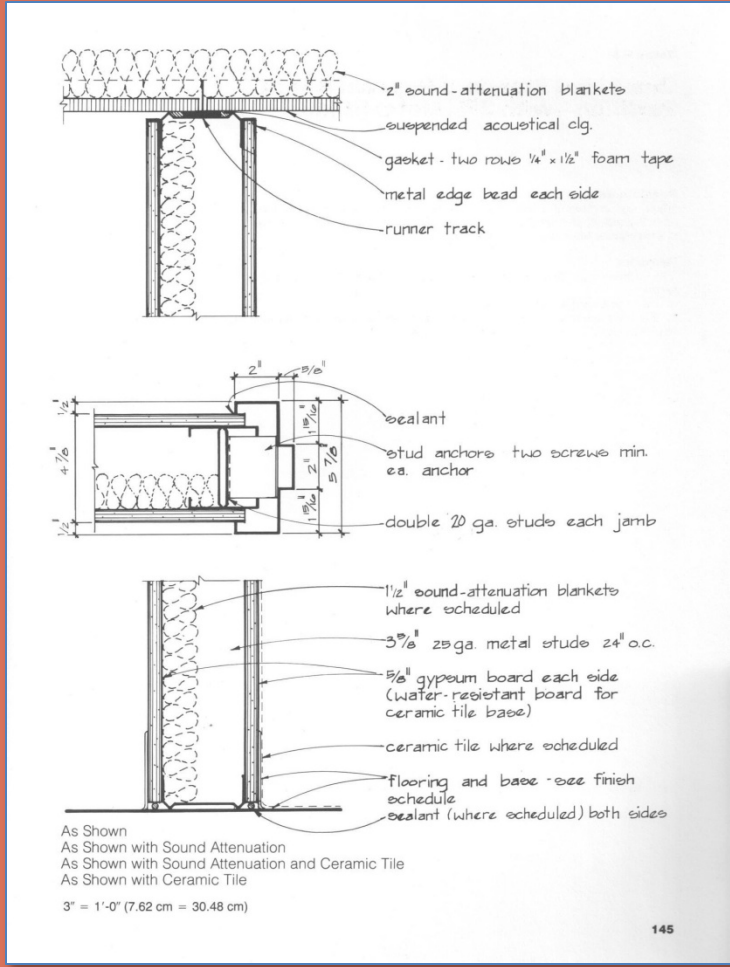
Possible Uses
As shown where 3 5/8" metal studs form the frame.

Remarks
This partition type detail incorporates four different conditions into a single graphic:

- a. The basic assembly, noted "As Shown."
- b. The basic assembly treated for acoustical purposes with sound-attenuation blankets, noted "As Shown with Sound Attenuation."
- c. The basic assembly treated both with sound-attenuation blankets, for acoustical purposes, and with ceramic tile, for conditions where mild to moderate moisture conditions might exist. Noted "As Shown with Sound Attenuation and Ceramic Tile," this partition is typical in toilet rooms that have tile on the walls and require acoustical separation from adjoining spaces.
- d. The basic assembly with ceramic tile on the walls, but without the sound attenuation. Noted "As Shown with Ceramic Tile," this partition is typical in toilet rooms that have tile on the walls but do not require acoustical separation from adjoining spaces.

A fifth condition would be to revise the gypsum board note to read, "Type X Gypsum Board," thereby creating a one-hour fire-rated partition. The variations using sound attenuation and tile could then be applied to the fire-rated partition.

- As Shown
- As Shown with Sound Attenuation
- As Shown with Sound Attenuation & Ceramic Tile
- As Shown with Ceramic Tile



1 LAYER 5/8" GWB ON ONE SIDE OF
3 5/8" METAL STUD FRAME

Partition Types

4 1/4" Partition 3 5/8" Stud (non-rated)

Partition Types

Sample Sheet

Construction Details : GWB

- 7 1/4"
- 4 7/8"
- 4 1/4"
- 6 1/8" (2 hr)
- Shaft (1 hr)
- Chase (1 hr)

Construction Details : CMU

- 4" Nominal
- 8" Nominal
- 4" Furring
- 8" Furring
- 8" Furring on 2 sides

CMU Ratings

- Assignment
- USG Selector
- Exercises

Wrap Up

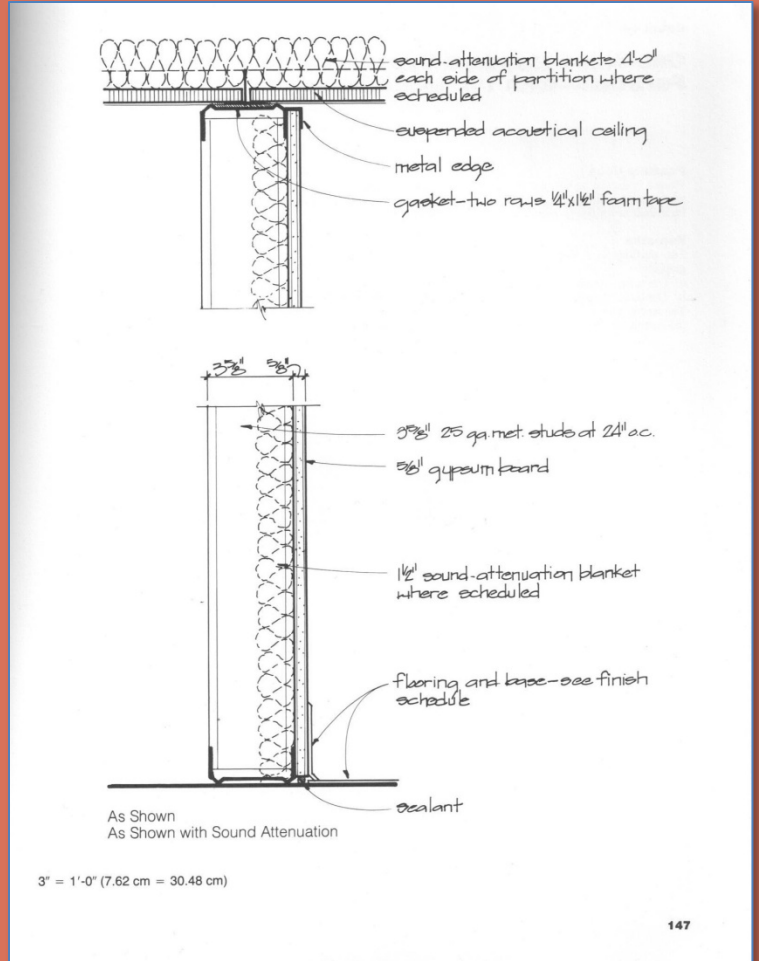
Detail 4-3

One-Sided Standard Gypsum Board Partition—with 3 5/8" Metal Studs

Possible Uses
When only one side of a wall needs to be finished, such as in an uninhabited space, an unfinished storage room, or an unfinished area that will be completed at a later date when it is occupied by a tenant.

Remarks
This partition type detail incorporates two different conditions into a single graphic:
a. The basic assembly, noted "As Shown."
b. The basic assembly treated for acoustical purposes with sound-attenuation blankets, noted "As Shown with Sound Attenuation."

- As Shown
- As Shown with Sound Attenuation



1" GWB SHAFT WALL LINER and 1 LAYER 5/8" SHAFT WALL FACEBOARD with 2 1/2" C-H STUD FRAME

Partition Types

3 1/8" Shaft Partition 2 1/2" C-H Stud (1 HR rated)

Partition Types

▪ **Sample Sheet**

▪ **Construction Details : GWB**

- 7 1/4"
- 4 7/8"
- 4 1/4"
- 6 1/8" (2 hr)
- Shaft (1 hr)
- Chase (1 hr)

▪ **Construction Details : CMU**

- 4" Nominal
- 8" Nominal
- 4" Furring
- 8" Furring
- 8" Furring on 2 sides

▪ **CMU Ratings**

- Assignment
- USG Selector
- Exercises

▪ **Wrap Up**

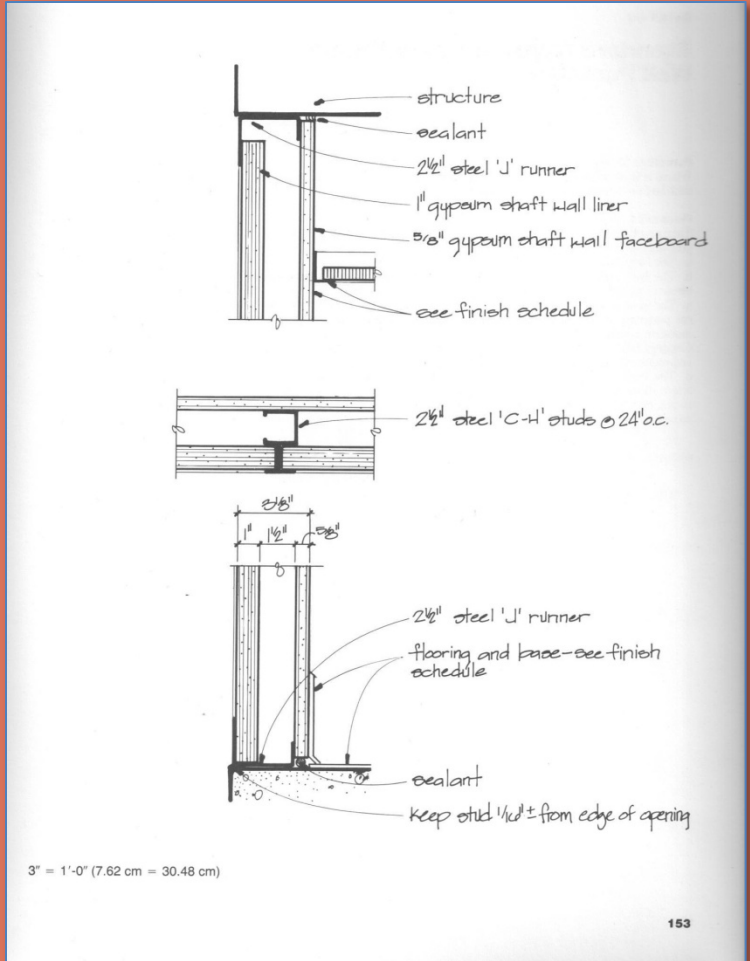
Detail 4-6

Standard Gypsum Board Shaft Wall Partition

Possible Uses
At shafts where it is necessary to have gypsum board on both sides of the partition, but it is not possible to work from the shaft side to install the gypsum board.

Remarks
This detail allows both sides of the partition gypsum board to be installed from one side.

- **As Shown**
- **For use at Elevators Shaft, Mechanical Shafts or Stairs Enclosures**
- **Allows for installation from one side**



1 LAYERS 5/8" GWB ON
EACH SIDE OF 1 5/8" METAL STUD FRAME

Partition Types
Width Varies Chase Partition 1 5/8" Stud (1 HR rated)

Partition Types

- Sample Sheet
- Construction Details : GWB
 - 7 1/4"
 - 4 7/8"
 - 4 1/4"
 - 6 1/8" (2 hr)
 - Shaft (1 hr)
 - Chase (1 hr)

- Construction Details : CMU
 - 4" Nominal
 - 8" Nominal
 - 4" Furring
 - 8" Furring
 - 8" Furring on 2 sides

- CMU Ratings
- Assignment
- USG Selector
- Exercises

- Wrap Up

Detail 4-7

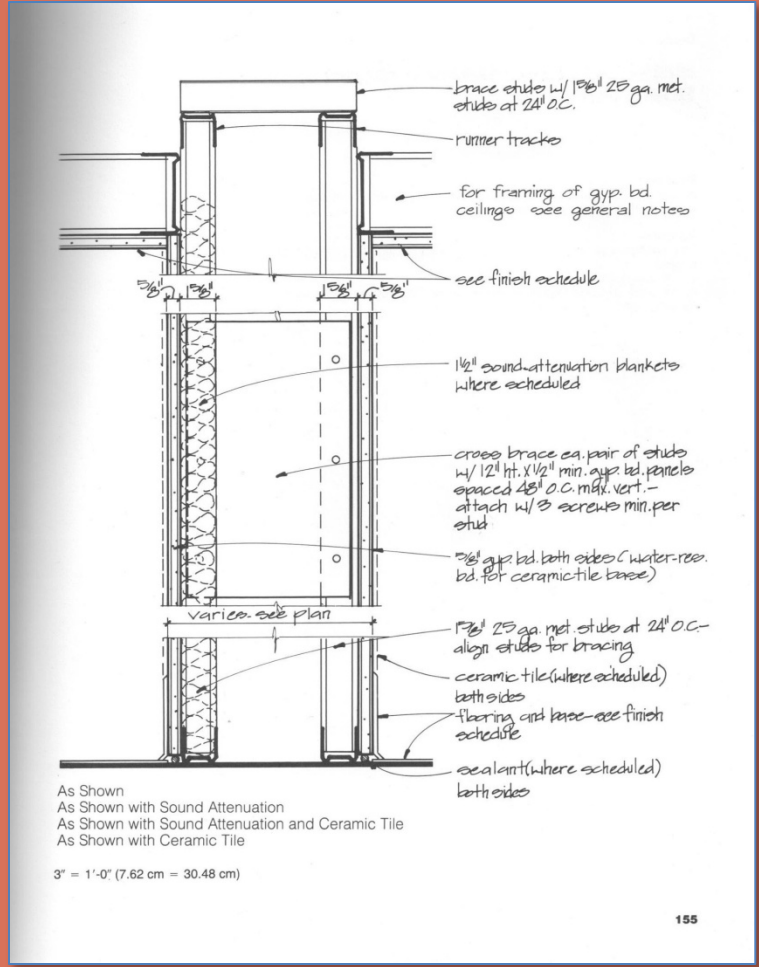
Standard Gypsum Board Chase Wall Partition

Possible Uses
Where it is necessary to have a large amount of space within the partition wall, such as at mechanical lines or toilet rooms.

Remarks
This partition type detail incorporates four different conditions into a single graphic:

- The basic assembly, noted "As Shown."
- The basic assembly treated for acoustical purposes with sound-attenuation blankets, noted "As Shown with Sound Attenuation."
- The basic assembly treated both with sound-attenuation blankets, for acoustical purposes, and with ceramic tile, for conditions where mild to moderate moisture conditions might exist. Noted "As Shown with Sound Attenuation and Ceramic Tile," this partition is typical in toilet rooms that have tile on the walls and require acoustical separation from adjoining spaces.
- The basic assembly with ceramic tile on the walls, but without the sound attenuation. Noted "As Shown with Ceramic Tile," this partition is typical in toilet rooms that have tile on the walls but do not require acoustical separation from adjoining spaces.

- As Shown
- As Shown with Sound Attenuation
- As Shown with Sound Attenuation & Ceramic Tile
- As Shown with Ceramic Tile



4" Nominal (3 5/8" Actual)
Concrete Masonry Unit (CMU)

Partition Types

4" Nominal Concrete Block Wall (rated)

Partition Types

- Sample Sheet
- Construction Details : GWB
 - 7 1/4"
 - 4 7/8"
 - 4 1/4"
 - 6 1/8" (2 hr)
 - Shaft (1 hr)
 - Chase (1 hr)
- Construction Details : CMU
 - 4" Nominal
 - 8" Nominal
 - 4" Furring
 - 8" Furring
 - 8" Furring on 2 sides

- CMU Ratings
- Assignment
- USG Selector
- Exercises
- Wrap Up

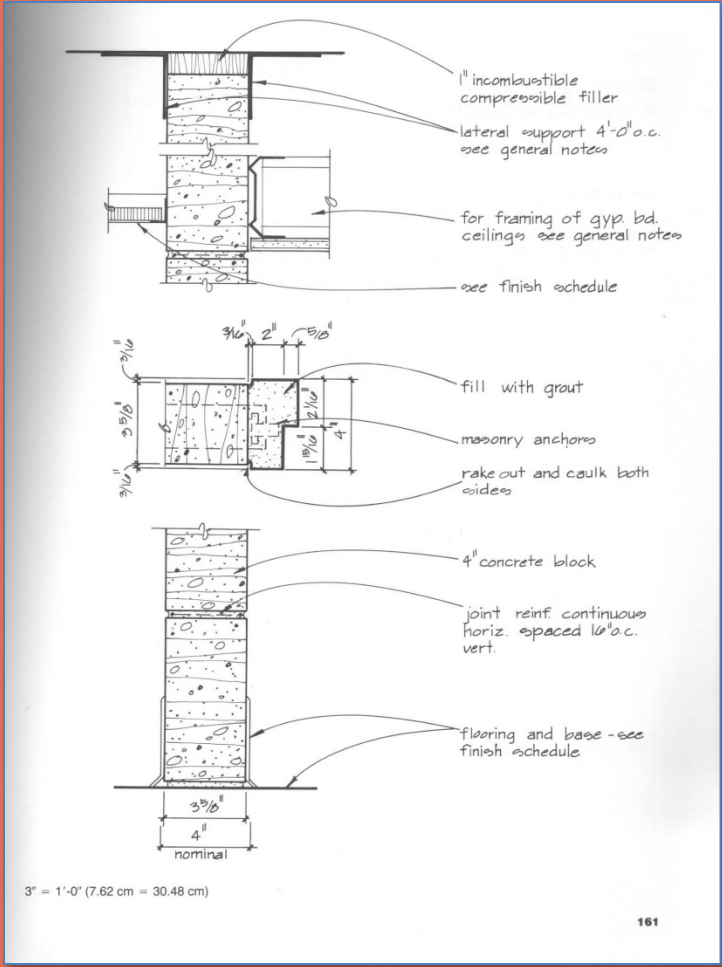
Detail 4-10

**Masonry Partition—
4" Concrete Block**

Possible Uses
Where a raw concrete block partition is needed.

Remarks
This detail does not provide the stability and protection of an 8" concrete block partition (Detail 4-11).

- As Shown
- Block walls are to be coursed out both in plan and elevation / section



8" Nominal (6 5/8" Actual) Concrete Masonry Unit (CMU)

Partition Types

8" Nominal Concrete Block Wall (rated)

Partition Types

- Sample Sheet
- Construction Details : **GWB**
 - 7 1/4"
 - 4 7/8"
 - 4 1/4"
 - 6 1/8" (2 hr)
 - Shaft (1 hr)
 - Chase (1 hr)
- Construction Details : **CMU**
 - 4" Nominal
 - 8" Nominal
 - 4" Furring
 - 8" Furring
 - 8" Furring on 2 sides

- CMU Ratings
- Assignment
- USG Selector
- Exercises
- Wrap Up

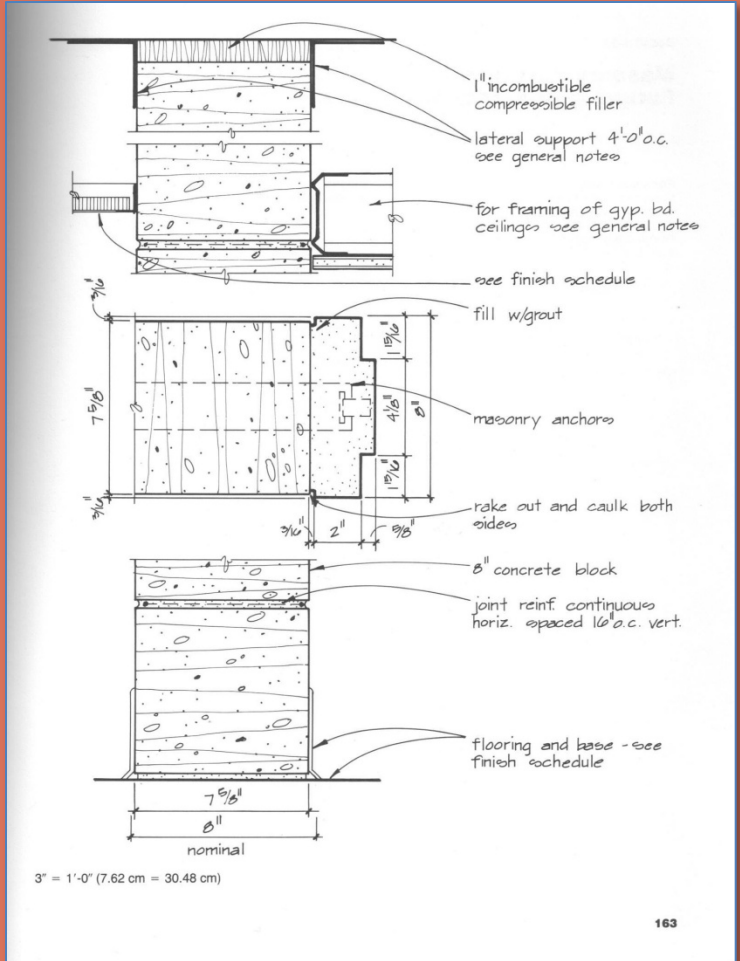
Detail 4-11

Masonry Partition— 8" Concrete Block

Possible Uses
At service areas, shafts, or high-abuse areas.

Remarks
This detail can provide a two-hour fire rating, but it must be noted on the drawing if desired. The project specification must describe the specifics of the assembly.

- **As Shown**
- **Block walls are to be coursed out both in plan and elevation / section**



4" Nominal (3 5/8" Actual) W/ 1 LAYER 5/8" GWB on 7/8" FURRING STRIPS ONE SIDE

Partition Types

4" Nominal Concrete Block Wall with Furring (Rated)

Partition Types

- Sample Sheet
- Construction Details : **GWB**
 - 7 1/4"
 - 4 7/8"
 - 4 1/4"
 - 6 1/8" (2 hr)
 - Shaft (1 hr)
 - Chase (1 hr)
- Construction Details : **CMU**
 - 4" Nominal
 - 8" Nominal
 - 4" Furring
 - 8" Furring
 - 8" Furring on 2 sides

CMU Ratings

- Assignment
- USG Selector
- Exercises
- Wrap Up

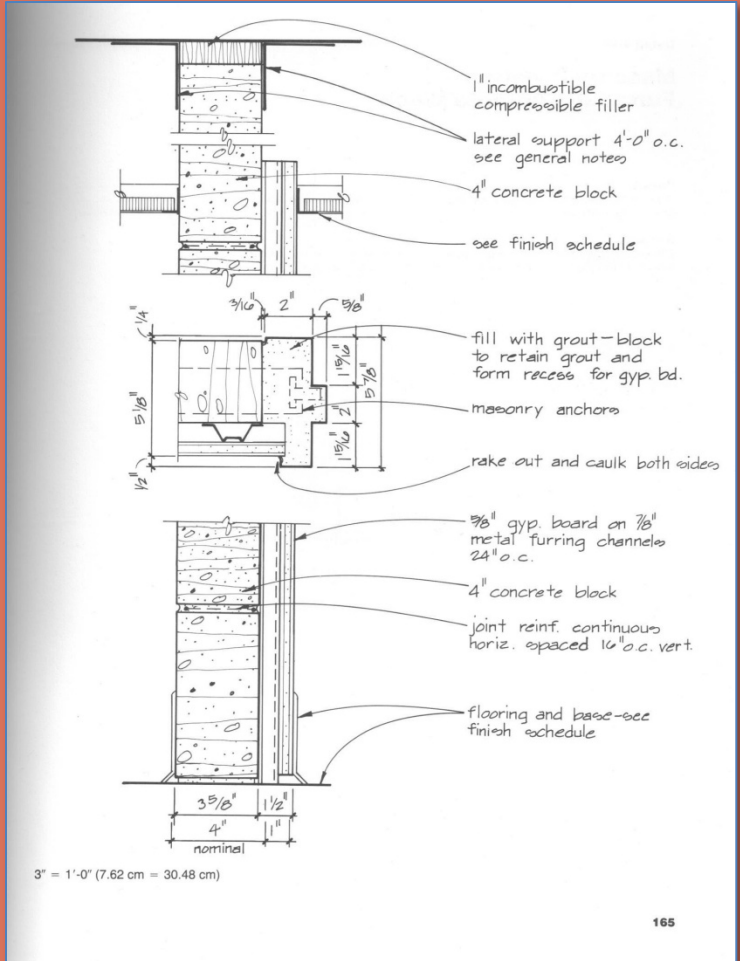
Detail 4-12

Masonry Partition—Furred 4" Concrete Block

Possible Uses
Provides benefits of concrete block partition on one side, while presenting a nicer finish on the other side.

Remarks
None.

- **As Shown**
- **Block walls are to be coursed out both in plan and elevation / section**



8" Nominal (7 5/8" Actual) W/ 1 LAYER 5/8" GWB on
7/8" FURRING STRIPS EACH SIDE

Partition Types

8" Nominal Concrete Block Wall with Furring (Rated)

Partition Types

- Sample Sheet
- Construction Details : GWB
 - 7 1/4"
 - 4 7/8"
 - 4 1/4"
 - 6 1/8" (2 hr)
 - Shaft (1 hr)
 - Chase (1 hr)
- Construction Details : CMU
 - 4" Nominal
 - 8" Nominal
 - 4" Furring
 - 8" Furring
 - 8" Furring on 2 sides

- CMU Ratings
- Assignment
- USG Selector
- Exercises
- Wrap Up

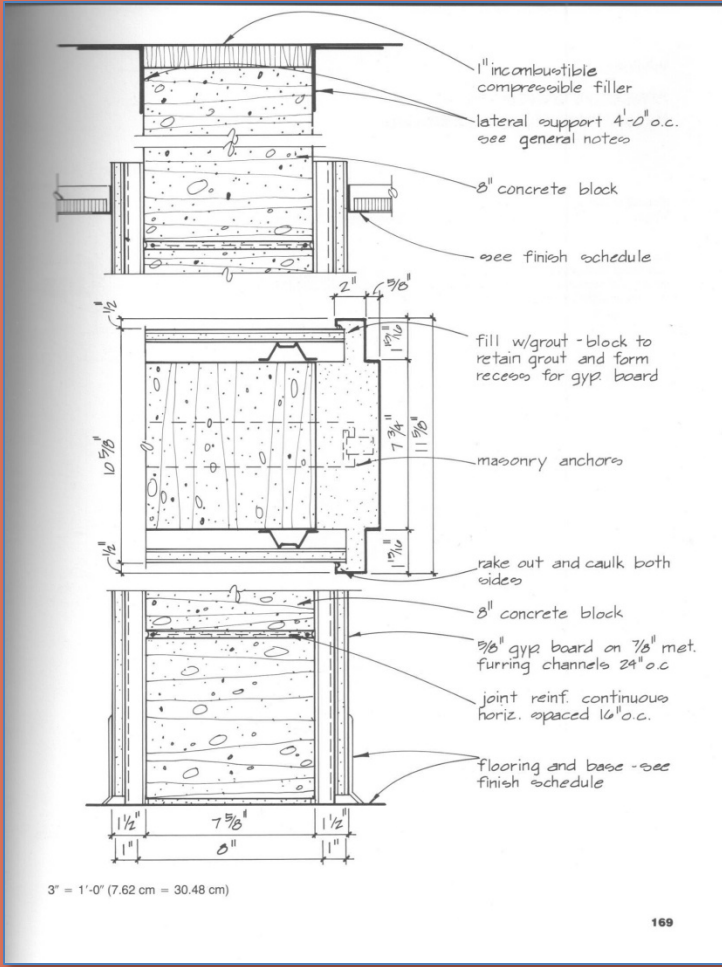
Detail 4-14

**Masonry Partition—
Furred 8" Concrete Block**

Possible Uses
Provides benefits of concrete block partition, while presenting a nicer finish on each side of the block.

Remarks
This detail can provide a two-hour fire rating, but it must be noted on the drawing if desired. The project specification must describe the specifics of the assembly.

- As Shown
- Block walls are to be coursed out both in plan and elevation / section
- With Furring on both sides coursing is not mandatory



Fire Ratings of Concrete Masonry Assemblies

Partition Types

- Sample Sheet
- Construction Details : GWB
 - 7 1/4"
 - 4 7/8"
 - 4 1/4"
 - 6 1/8" (2 hr)
 - Shaft (1 hr)
 - Chase (1 hr)
- Construction Details : CMU
 - 4" Nominal
 - 8" Nominal
 - 4" Furring
 - 8" Furring
 - 8" Furring on 2 sides

CMU Ratings

- Assignment
- USG Selector
- Exercises
- Wrap Up

tion from the original tested wall assembly is allowed, including unit size, shape, mix design, constituent materials, and even the plant of manufacture.

For prescriptive designs, the IBC provides a series of tables that describe requirements of various assemblies.

An information series from the national authority on concrete masonry technology

KINGSTON
BLOCK & MASONRY SUPPLY, LLC

NATIONAL CONCRETE MASONRY ASSOCIATION
Sustainable Concrete Products for Structures and Hardscapes

FIRE RESISTANCE RATINGS OF CONCRETE MASONRY ASSEMBLIES

TEK 7-1C
Fire Resistance (2009)

INTRODUCTION

METHODS OF DETERMINING FIRE RESISTANCE RATINGS

- Ratings will vary depending upon:
 - the width of the material
 - the percentage of solid
 - the composition
 - the assembly

walls. Fire testing of wall assemblies is conducted in accordance with the *Standard Test Methods for Fire Tests of Building Construction and Materials*, ASTM E119 (ref. 4), which measures four performance criteria, as follows:

- resistance to the transmission of heat through the wall assembly

certainly preferable to a structural collapse endpoint, characteristic of many other building materials.

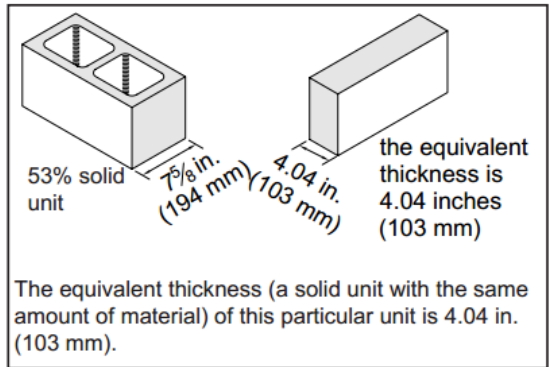


Figure 1—Equivalent Thickness

Table 2—Equivalent Thicknesses of Concrete Masonry Units, in. (mm)


Nominal width, in. (mm)	Based on typical hollow units ^A	Based on percent solid	
		(75%)	(100%)
4 (102)	2.7 (69) [73.8]	2.7 (69)	3.6 (91)
6 (152)	3.1 (79) [55.0]	4.2 (107)	5.6 (142)
8 (203)	4.0 (102) [53.0]	5.7 (145)	7.6 (193)
10 (254)	4.5 (113) [46.3]	7.2 (183)	9.6 (244)
12 (305)	5.1 (129) [44.0]	8.7 (221)	11.6 (295)
14 (356)	5.5 (139) [40.2]	10.2 (259)	13.6 (345)
16 (406)	6.0 (152) [38.4]	11.7 (297)	15.6 (396)

^A Values in brackets [] are percent solid values based on typical two-core concrete masonry units.

Partition Types

- Sample Sheet
- Construction Details : GWB
 - 7 1/4"
 - 4 7/8"
 - 4 1/4"
 - 6 1/8" (2 hr)
 - Shaft (1 hr)
 - Chase (1 hr)
- Construction Details : CMU
 - 4" Nominal
 - 8" Nominal
 - 4" Furring
 - 8" Furring
 - 8" Furring on 2 sides
- CMU Ratings
- Assignment
- USG Selector
- Exercises
- Wrap Up

Partition Types Assignment



**NEW YORK CITY
COLLEGE OF TECHNOLOGY**
THE CITY UNIVERSITY OF NEW YORK

DEPARTMENT OF ARCHITECTURAL TECHNOLOGY

ARCH 2330 BUILDING TECHNOLOGY III

Assignment Number/Name: Partition Types

Computer Program(s): AutoCAD, Revit, Web Browser and Blackboard

Student Learning Objectives:
Upon successful completion of this assignment, the student will:

1. Be able to research and develop partition types
2. Construct/draw partition type details.

Student Skills Learning Objectives: (AutoCAD)
Upon successful completion, in addition to skills required by previous lessons the student will:

1. Be able to externally reference files and images
2. Be able to add annotation and dimensions
3. Create & Edit Blocks both architectural and for annotation
4. Use hatching commands
5. Use appropriate line weights and line patterns

Assessment:
To evaluate the student's achievement of the learning objectives, the professor will do the following:

1. Evaluate the student's partition types for accuracy and completeness.
2. Evaluate students ability to research relevant information regarding construction of details.
3. Drawing will be evaluated on its own and as part of the AutoCAD drawing set submission.

Project Description:
Students will research, develop and draw a series of standard partitions types to include the following. For each wall type your drawing must show base condition, top condition and condition at ceiling all in section view and plan view.

1. Gypsum Wall Board & Stud Partitions for 1-hour, 2-hour and 3 hour rating. (3 types).
2. Each of the gypsum wall types must be evaluated to accommodate 12', 14' and 16' floor to floor heights and must also include sub-types with Sound Attenuation Blanket (types as needed)
3. 4" and 8" Nominal Block Interior walls both glazed and unglazed. (2 types)
4. Block walls with furring & with studs with Gypsum wallboard finish on 1 side. (2 types)
5. Shaft & Chase Walls. (2 types)


Process:

1. Research Gypsum wall types on USG website
2. Understand structural capabilities of different metal stud wall frames
3. Develop and draw all details.
4. Develop completed partitions sheet with annotations and dimensions.
5. Post completed sheet as a pdf and as a drawing file by the assigned deadline & add description.

References:

1. USG Design Studio <http://www.usgdesignstudio.com/>
2. USG Wall Selector <http://www.usgdesignstudio.com/wall-selector.asp>

18 Voorhees Hall • 186 Jay Street, Brooklyn, NY 11201-1909 • 718 260 5262 Fax 718 254 8547 • www.citytech.cuny.edu



Project Description:

Students will research, develop and draw a series of standard partitions types to include the following. For each wall type your drawing must show base condition, top condition and condition at ceiling all in section view and plan view.

1. Gypsum Wall Board & Stud Partitions for 1-hour, 2-hour and 3 hour rating. (3 types).
2. Each of the gypsum wall types must be evaluated to accommodate 12', 14' and 16' floor to floor heights and must also include sub-types with Sound Attenuation Blanket (types as needed)
3. 4" and 8" Nominal Block Interior walls both glazed and unglazed. (2 types)
4. Block walls with furring & with studs with Gypsum wallboard finish on 1 side. (2 types)
5. Shaft & Chase Walls. (2 types)

Process:

1. Research Gypsum wall types on USG website
2. Understand structural capabilities of different metal stud wall frames
3. Develop and draw all details.
4. Develop completed partitions sheet with annotations and dimensions.
5. Post completed sheet as a pdf and as a drawing file by the assigned deadline & add description.

Partition Types

Sample Sheet

Construction Details : GWB

- 7 1/4"
- 4 7/8"
- 4 1/4"
- 6 1/8" (2 hr)
- Shaft (1 hr)
- Chase (1 hr)

Construction Details : CMU

- 4" Nominal
- 8" Nominal
- 4" Furring
- 8" Furring
- 8" Furring on 2 sides

CMU Ratings

Assignment

USG Selector

Exercises

Wrap Up

US Gypsum Website Resource: Partition Types

The screenshot shows the USG Design Studio website interface. At the top, there is a navigation bar with the USG logo and menu items: DESIGN STUDIO, System Selector, Ceilings, Sustainability, Details, Submittals/ MSDS, Support, and My Dashboard. The main content area is titled "Wall Selector" and includes a breadcrumb trail: Home > Wall Selector.

On the left side, there is a "Wall Types" section with a list of radio buttons:

- All Wall Types (selected)
- Area Separation Wall
- Chase Walls
- Exterior Walls
- Furred Masonry
- Interior Partitions
- Shaft Wall

The central window displays a detailed view of the "GA WP-7008 Fire Rated System Design - Steel Stud (Non-loadbearing)". It includes a cross-section diagram showing a 3/8" thick assembly with a steel stud and gypsum board. Below the diagram, the text reads:

GA WP-7008
Shaft Wall - Steel Stud (Non-loadbearing)

Fire Rating	STC / Sound Test	System Thickness
1 hour	N/A	3-1/8"

Below the table is a "Detail Description" section with a list of components:

- Gypsum Board - 5/8 in. thick board, applied vertically, attached to studs with 1 in. long, Type S-12 screws, spaced 8 in. OC along the edges and 12 in. OC of the board - SHEETROCK® UltraLight Firecode X Gypsum Panels
- Steel Studs - "C-H" shaped studs, 2-1/2 in. wide by 1-1/2 in. deep, min 25 gauge steel spaced max @ 24 in. - 400CH-34
- Gypsum Board - 1 in. thick by nom. 2 ft. wide gypsum liner panels. Vertical edges inserted in "H" shaped section of "C-H" studs. Free edge of end panels attached to long leg of "J" runners - SHEETROCK Brand Glass-Mat Gypsum Liner Panel

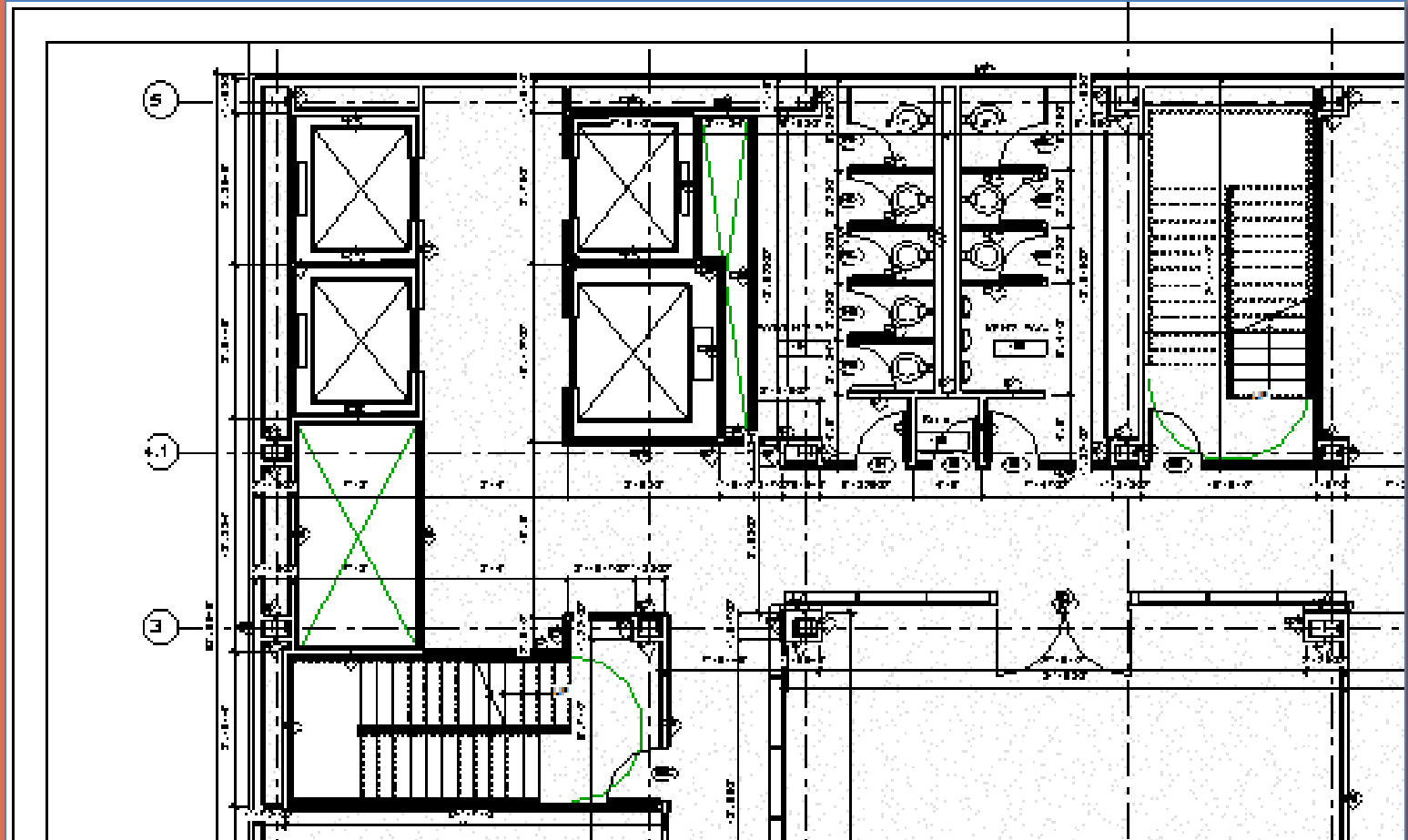
At the bottom of the window, there is a "Reference URL" and a "REVIT" download link.

On the right side of the main page, there is a search bar and a list of product options:

- Core Gypsum Panels
- CODE® Core (Type X)
- C Core Gypsum Panels
- DE® C Core Gypsum Panels
- sum Panel
- ypsum Panel - 5/8"
- sum Panels
- Panels
- FIBEROCK Brand Abuse-Resistant VHI Interior Panels
- FIBEROCK Brand Aqua-Tough VHI Interior Panels

Partition Types

- Sample Sheet
- Construction Details : **GWB**
 - 7 1/4"
 - 4 7/8"
 - 4 1/4"
 - 6 1/8" (2 hr)
 - Shaft (1 hr)
 - Chase (1 hr)
- Construction Details : **CMU**
 - 4" Nominal
 - 8" Nominal
 - 4" Furring
 - 8" Furring
 - 8" Furring on 2 sides
- CMU Ratings
- Assignment
- USG Selector
- Exercises
- Wrap Up

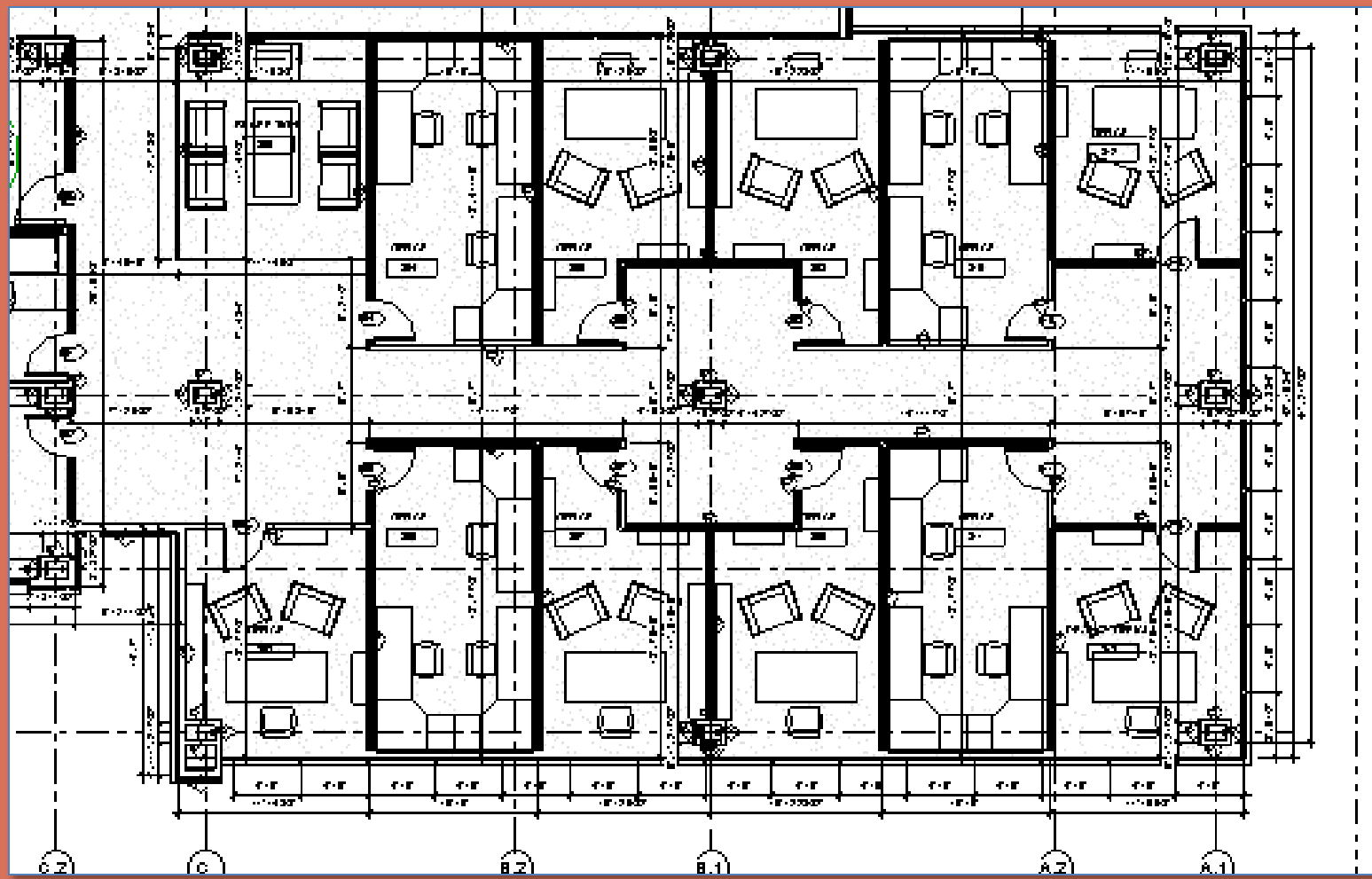


Work as a Team to Identify Partition Types

Partition Types Exercise 1.5

Partition Types

- Sample Sheet
- Construction Details : **GWB**
 - 7 1/4"
 - 4 7/8"
 - 4 1/4"
 - 6 1/8" (2 hr)
 - Shaft (1 hr)
 - Chase (1 hr)
- Construction Details : **CMU**
 - 4" Nominal
 - 8" Nominal
 - 4" Furring
 - 8" Furring
 - 8" Furring on 2 sides
- CMU Ratings
- Assignment
- USG Selector
- Exercises
- Wrap Up




Work as a Team to Identify Partition Types

Partition Types
Exercise 1.6

Partition Types

- Sample Sheet
- Construction Details : GWB
 - 7 1/4"
 - 4 7/8"
 - 4 1/4"
 - 6 1/8" (2 hr)
 - Shaft (1 hr)
 - Chase (1 hr)
- Construction Details : CMU
 - 4" Nominal
 - 8" Nominal
 - 4" Furring
 - 8" Furring
 - 8" Furring on 2 sides
- CMU Ratings
- Assignment
- USG Selector
- Exercises
- Wrap Up



COLUMBIA UNIVERSITY
CONCORD BUILDING
177 Concord St
Brooklyn, NY 11201

Zakarya A. Samii
177 Concord St
6th FLOOR

Student ID: 1001234567
Date: 10/15/2013
Course: ARCH 101
Section: 01

A-108

Partition Types

- Sample Sheet
- Construction Details : GWB
 - 7 1/4"
 - 4 7/8"
 - 4 1/4"
 - 6 1/8" (2 hr)
 - Shaft (1 hr)
 - Chase (1 hr)
- Construction Details : CMU
 - 4" Nominal
 - 8" Nominal
 - 4" Furring
 - 8" Furring
 - 8" Furring on 2 sides
- CMU Ratings
- Assignment
- USG Selector
- Exercises
- Wrap Up

Wrap Up

• Partition Types

▪ Sample Partition Sheet

▪ Construction Details

- GWB
- CMU
- CMU w/ Furring

▪ CMU Ratings

- Assignment
- USG Selector
- Exercises

▪ Wrap Up

Assignment : Step by Step

- *Layout Grid in Paperspace & Modelspace*
- *Fit partitions in compact layout*
- *Multiple types from single drawing*
- *Each partition type shows the following:*
 - *Section Views:*
 - *Top condition*
 - *Ceiling condition*
 - *Base condition*
 - *Plan View*
 - *Stud condition*



That's all Folks!