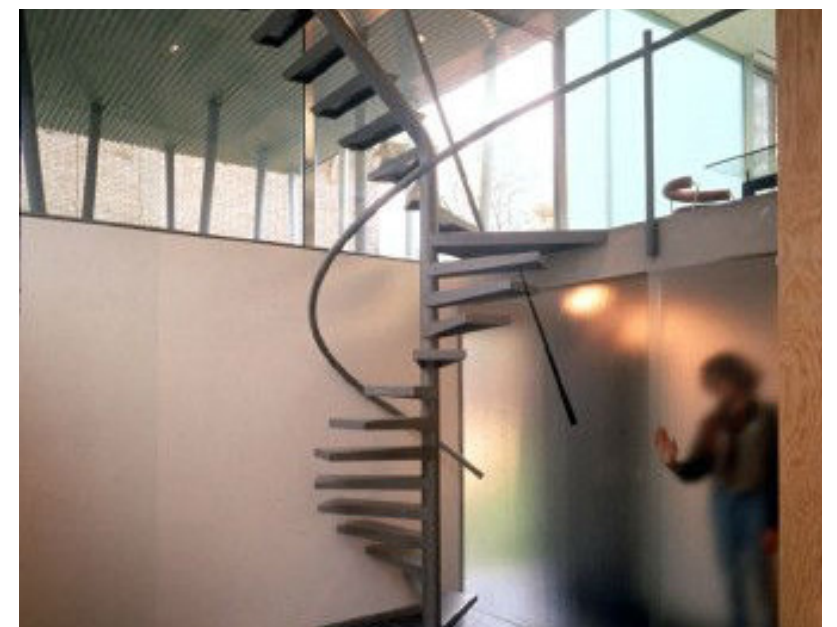
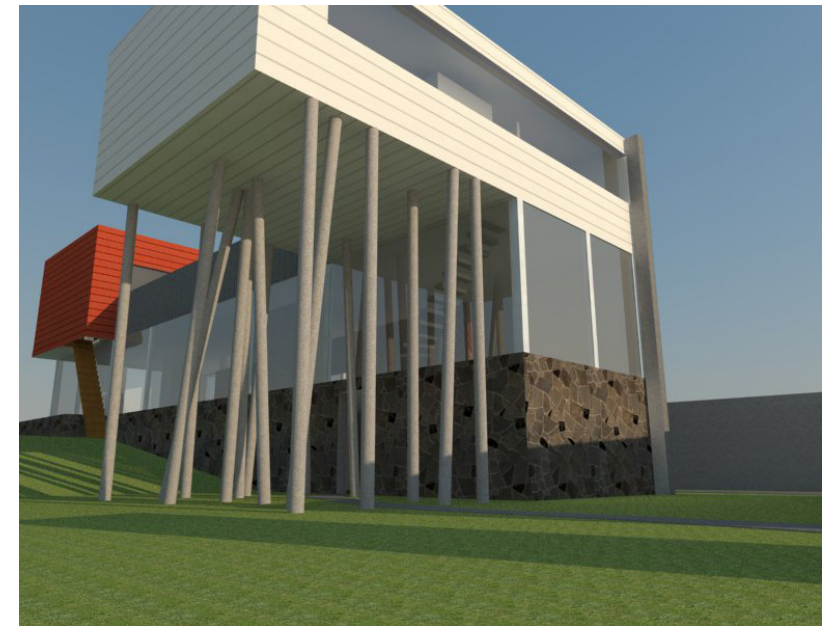
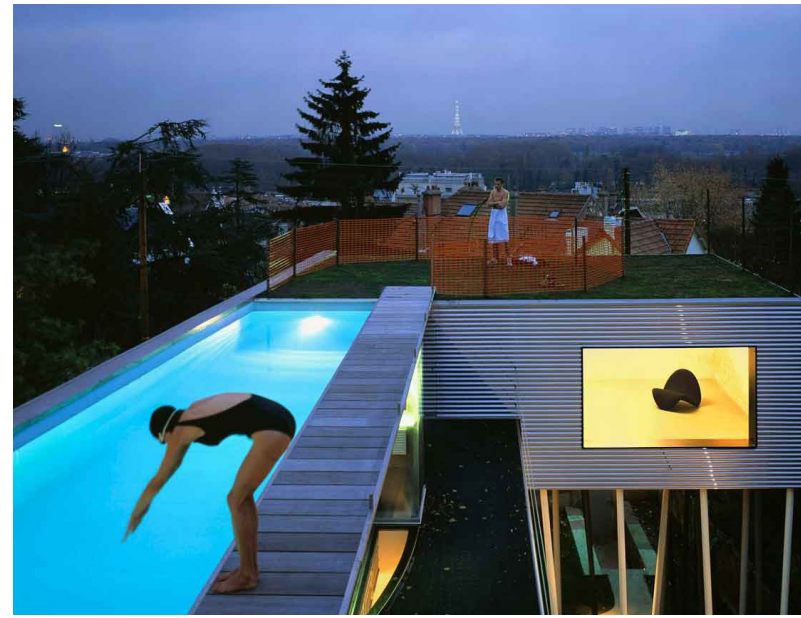


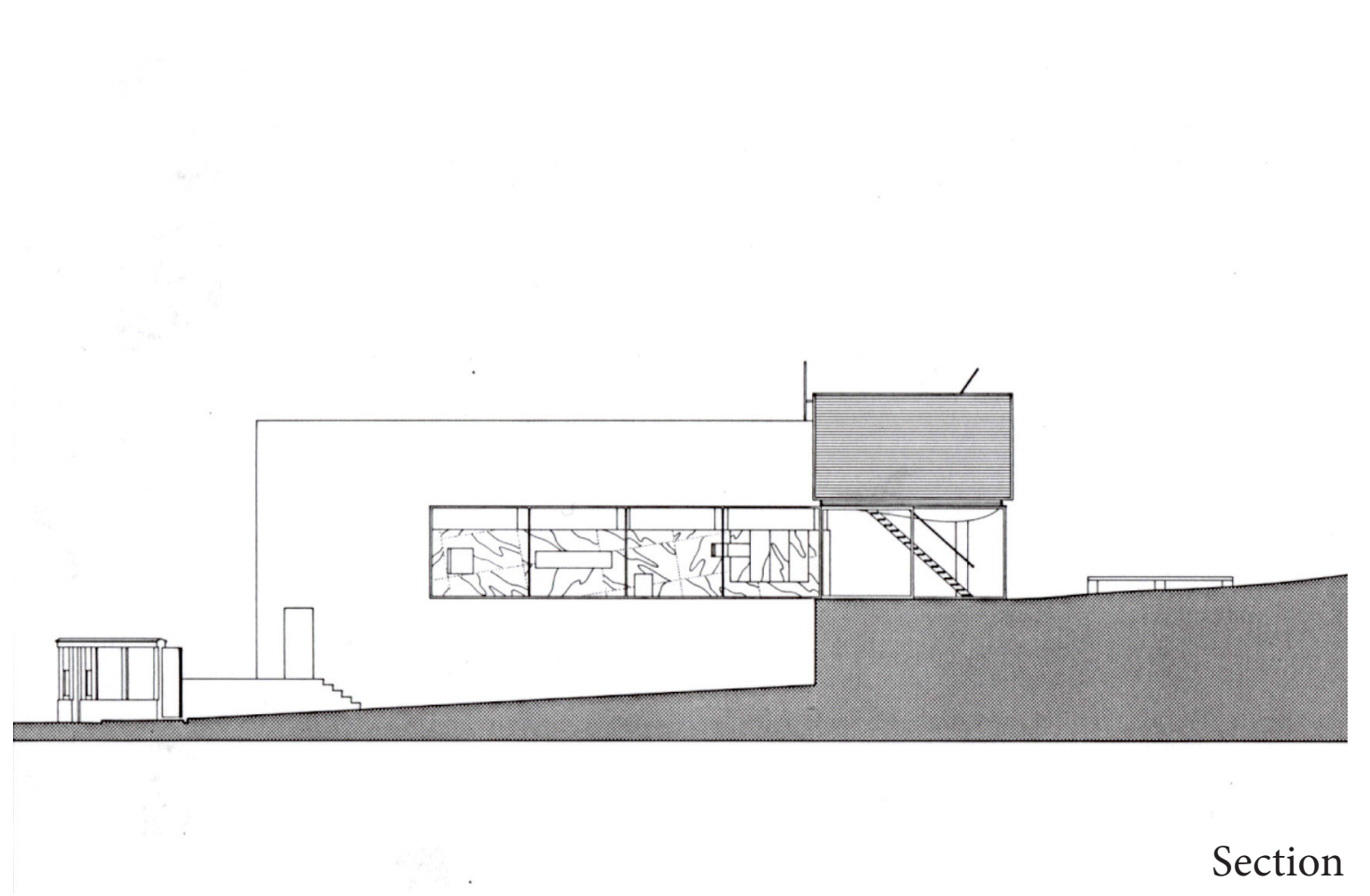
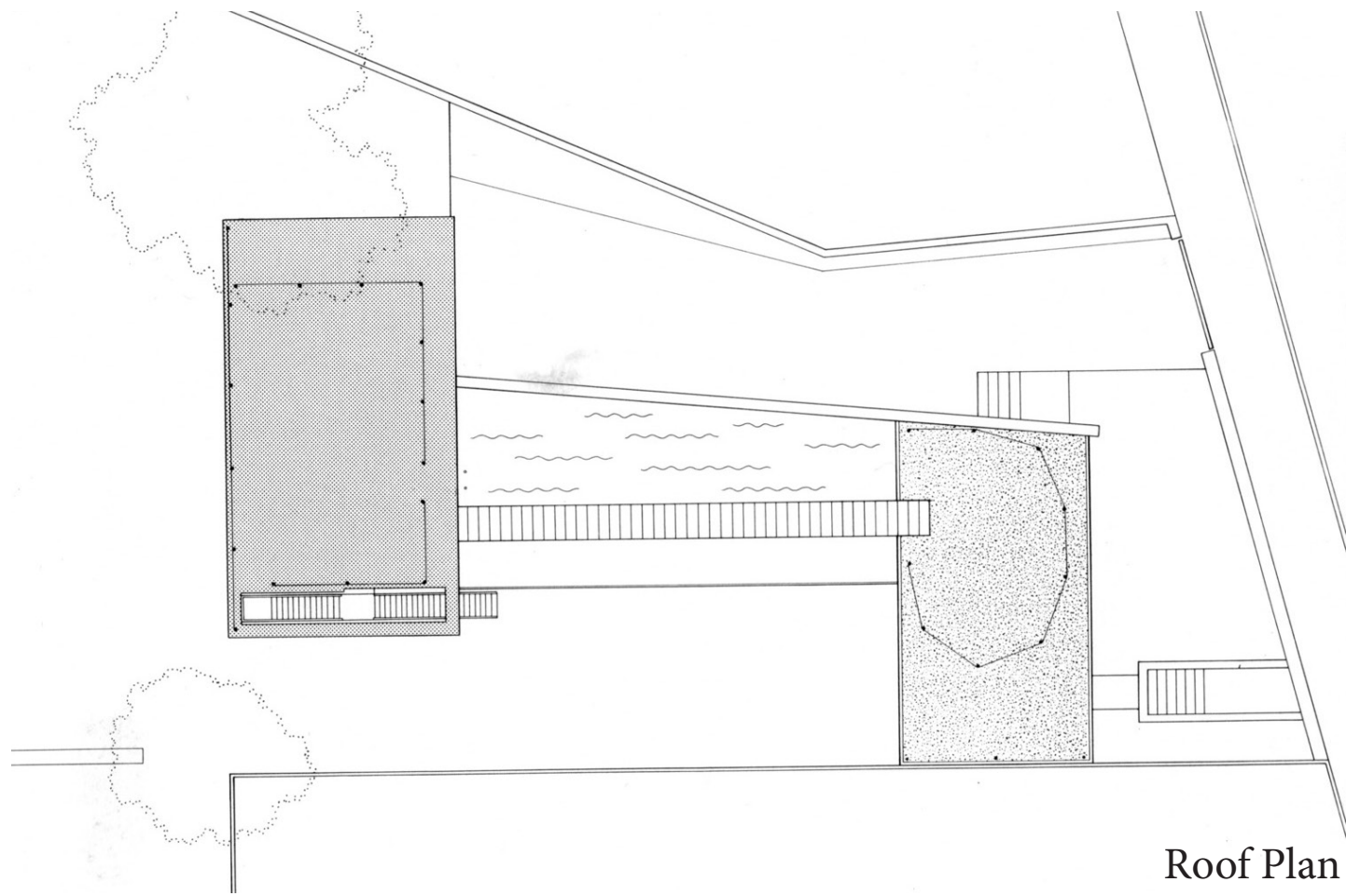
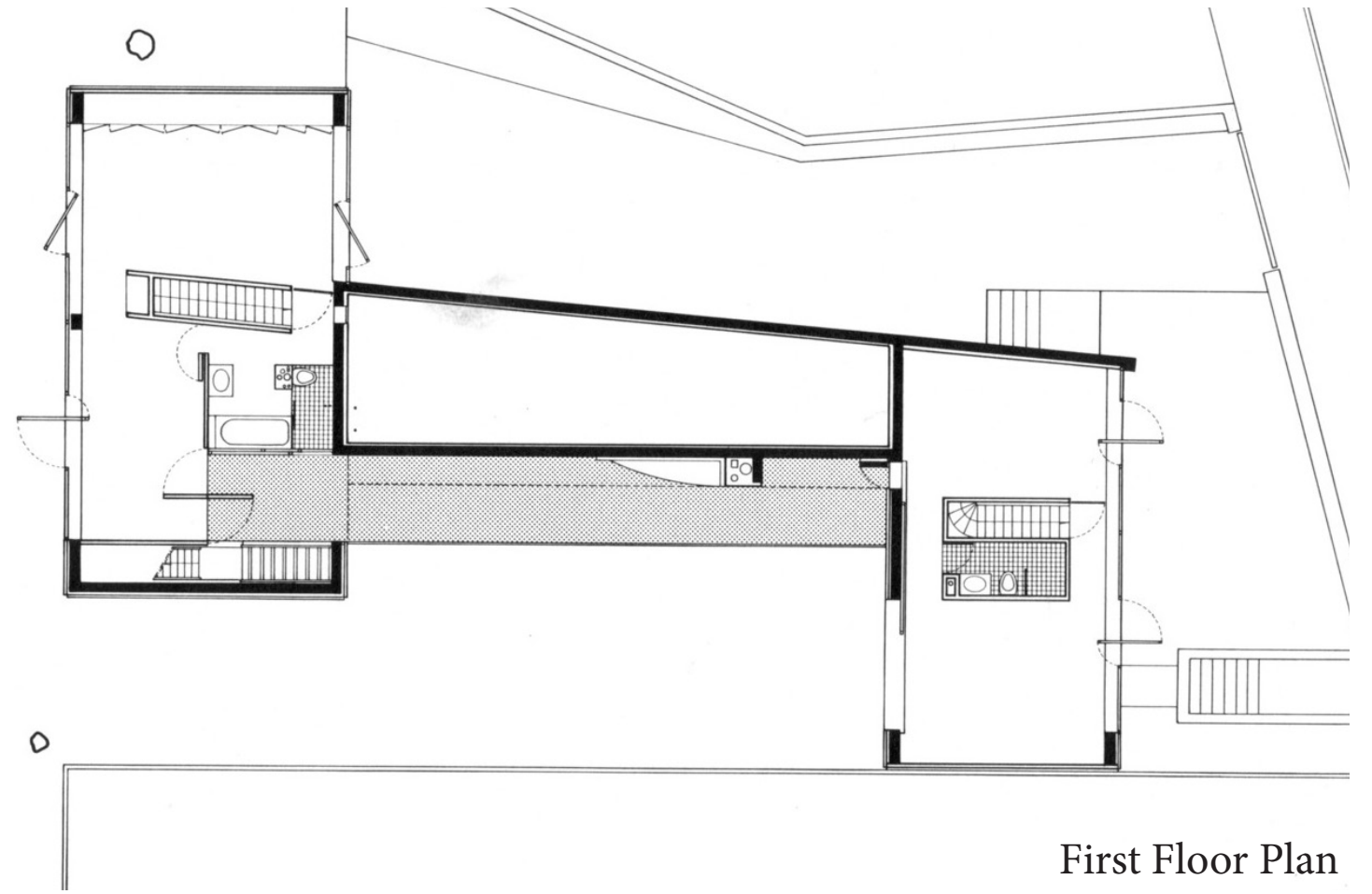
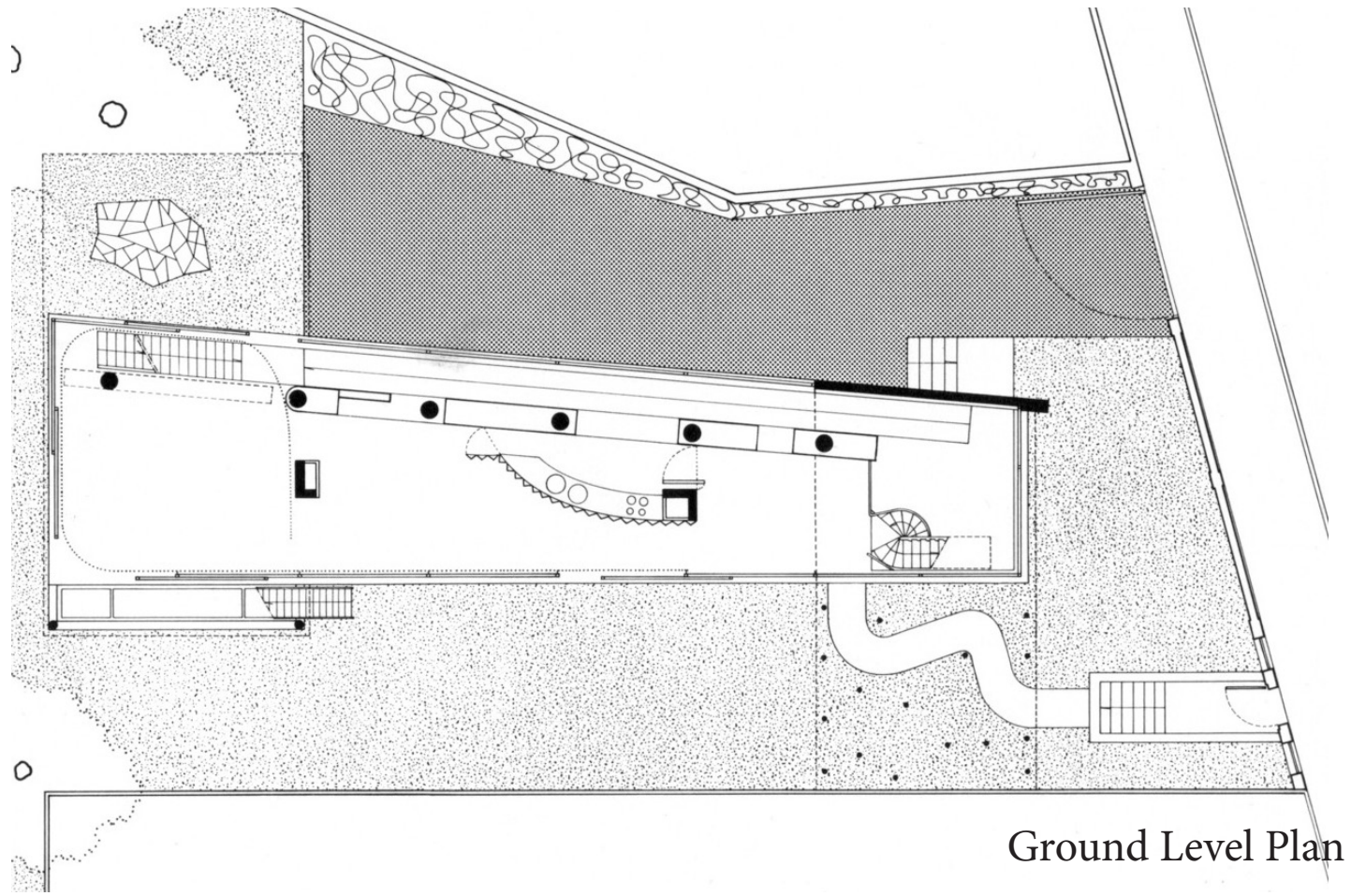


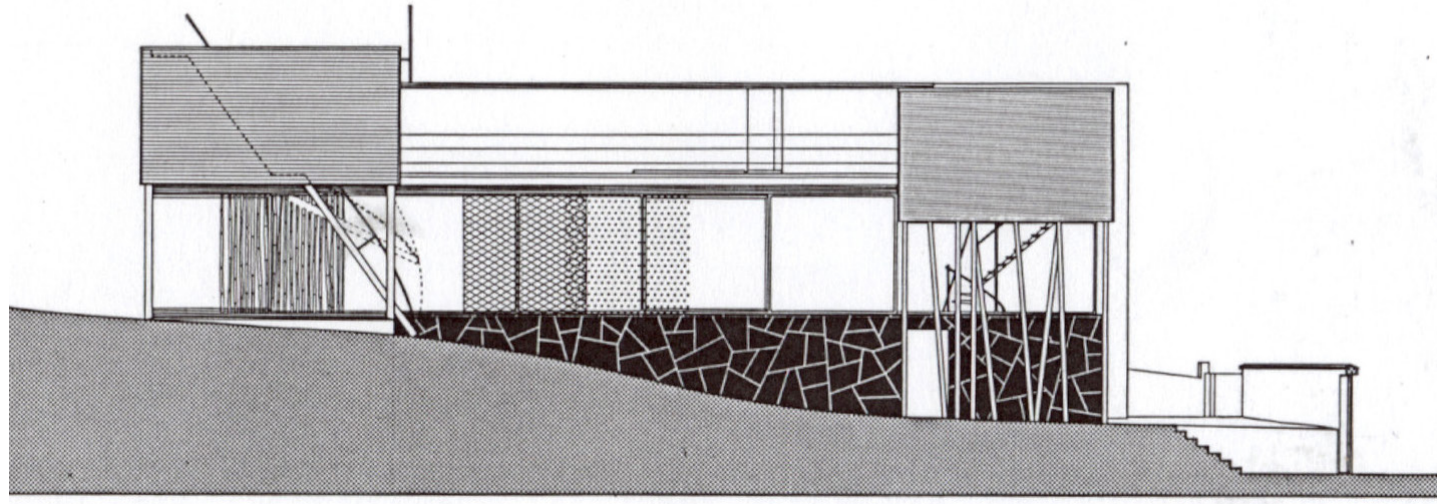
Architects: OMA  
Location: Saint-Cloud, France  
Design Team: Rem Koolhaas, Xaveer de Geyter, Jeroen Thomas  
Project Year: 1991

## Design Concept

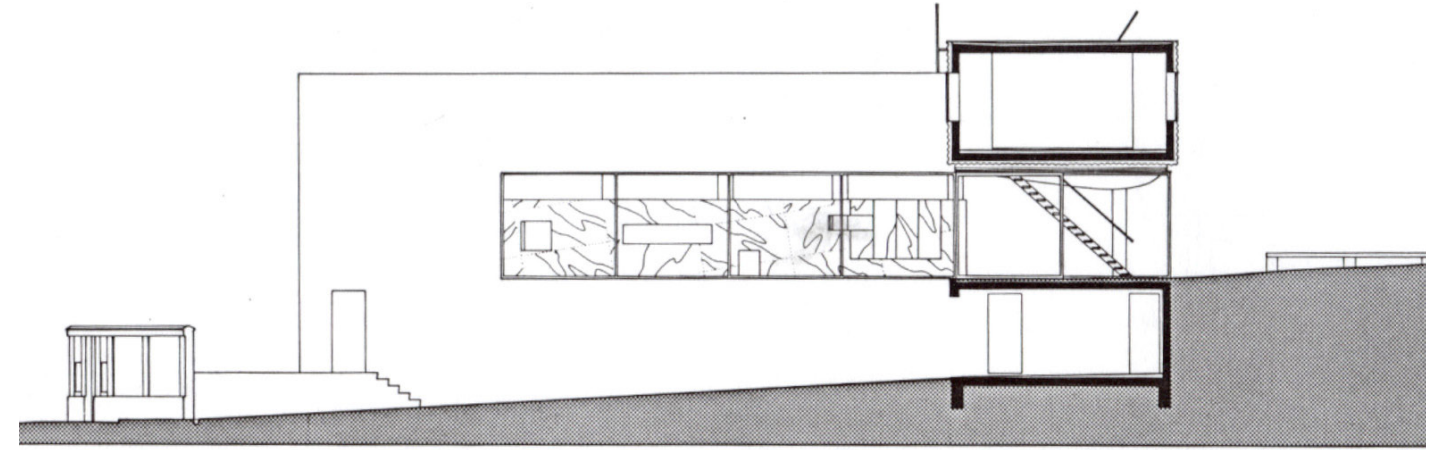
The house by OMA residential for parents and their daughter. The house is conceived as a glass pavilion containing living and dining areas, with two hovering, perpendicular apartments shifted in opposite directions to exploit the view. They are joined by the swimming pool which rests on the concrete structure encased by the glass pavilion. The house built on a hill which gives the incredible view of the City of Paris with a rooftop pool.



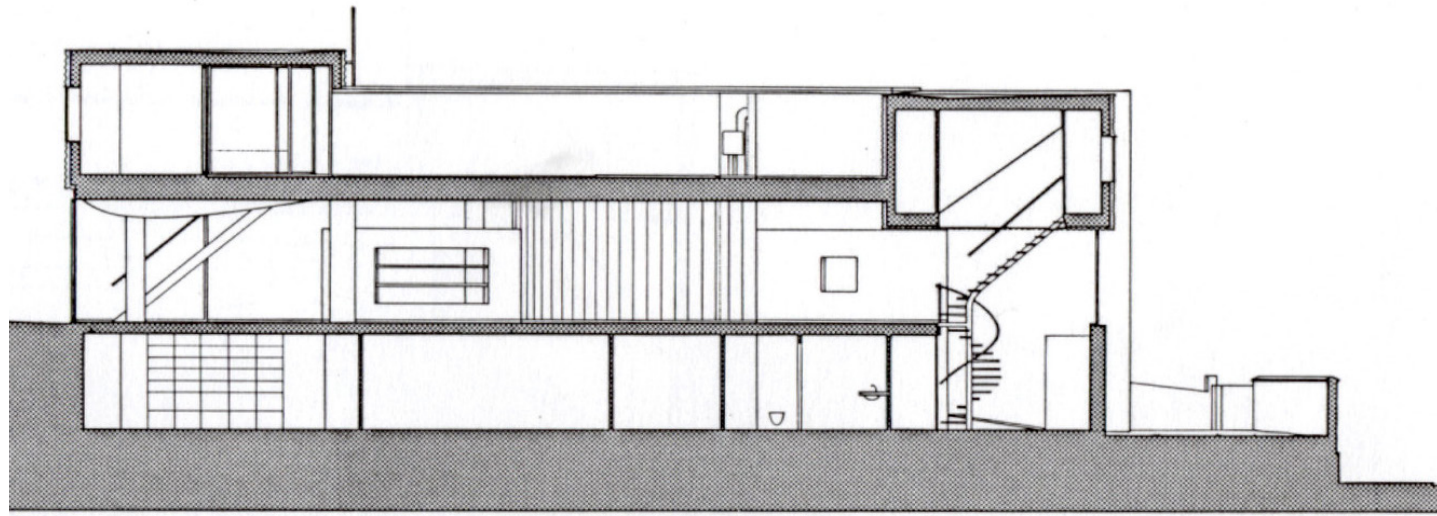




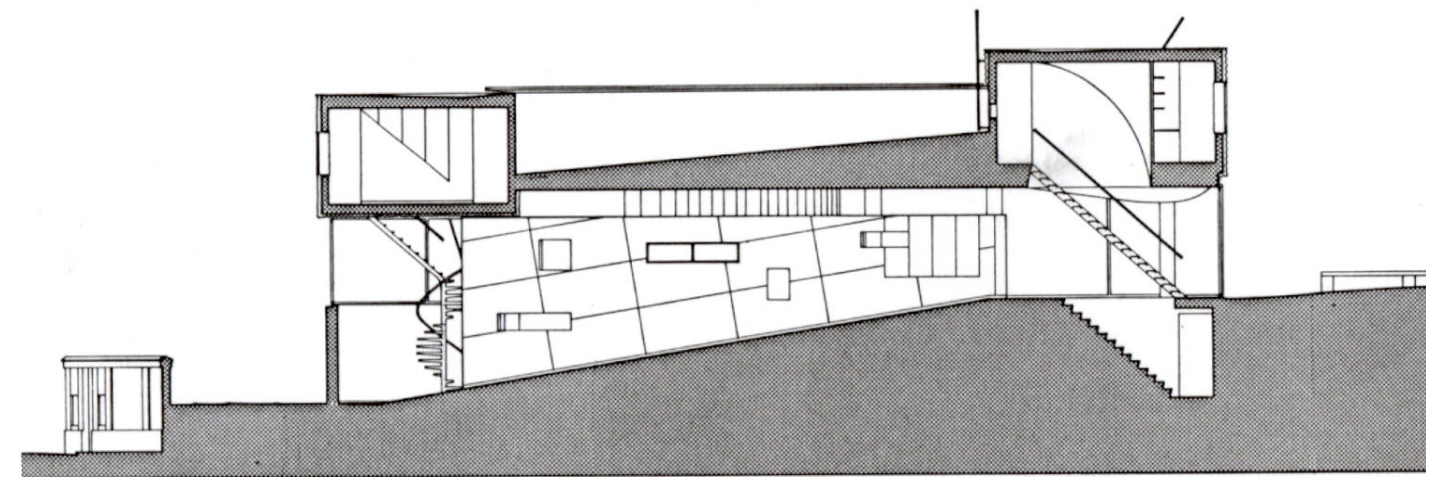
Section



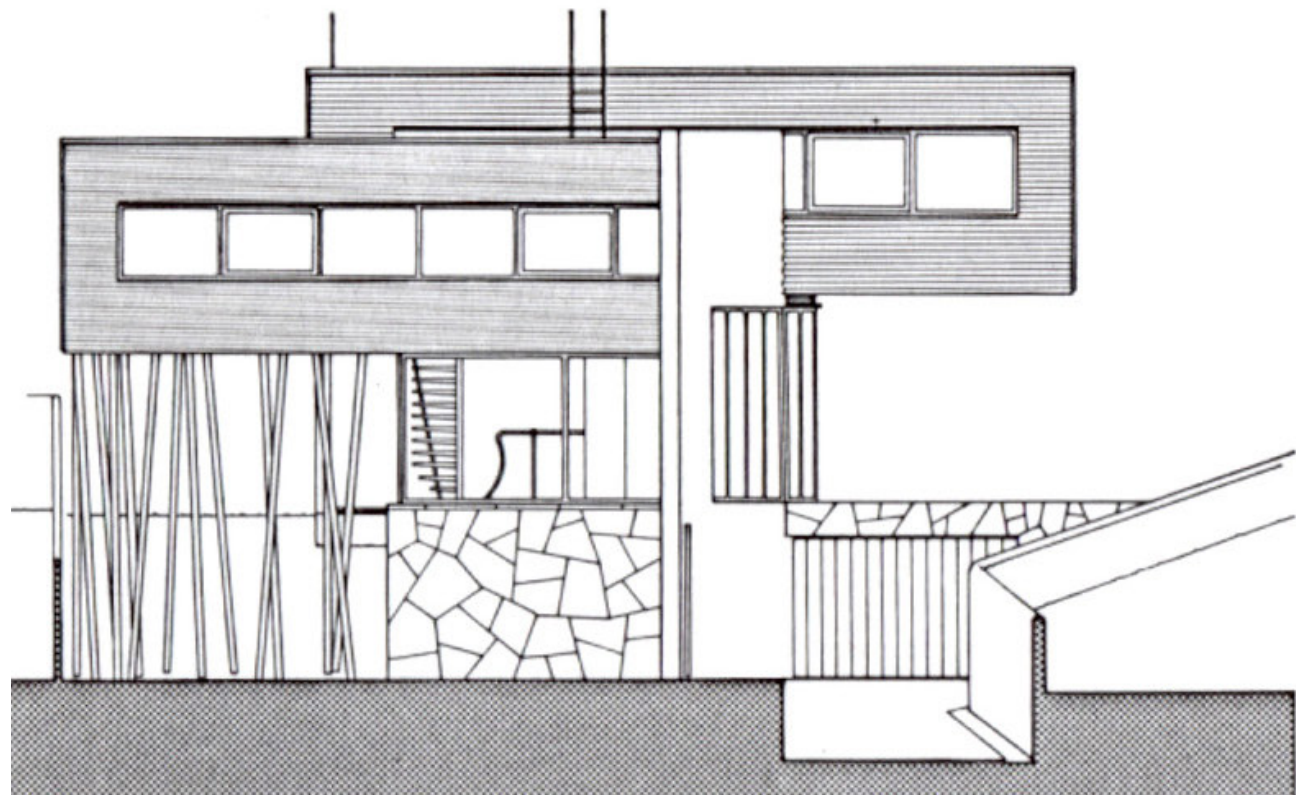
Section



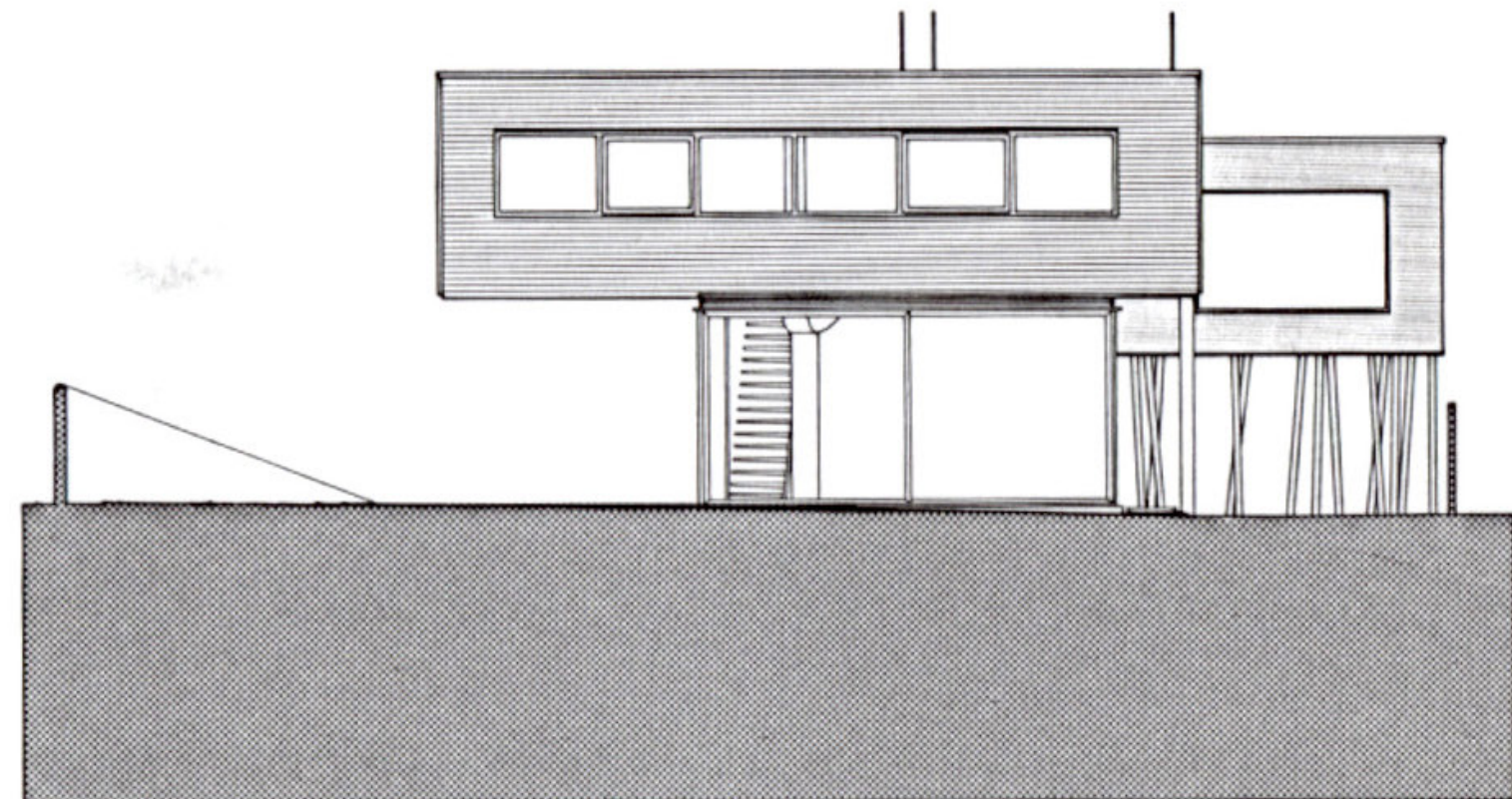
Section



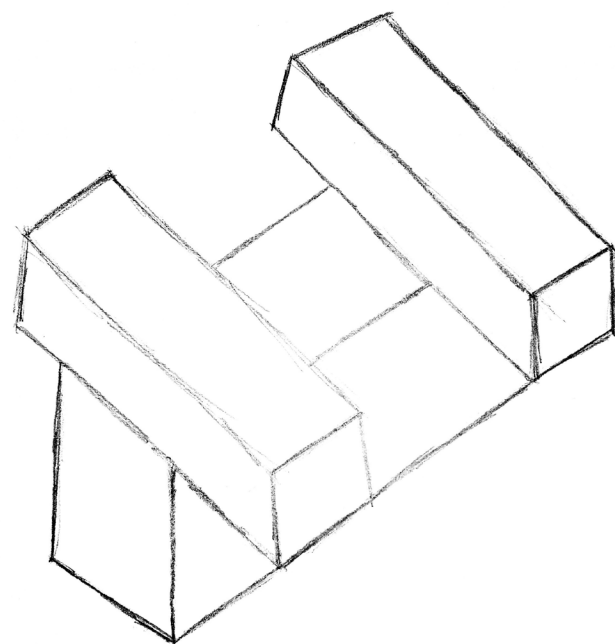
Section



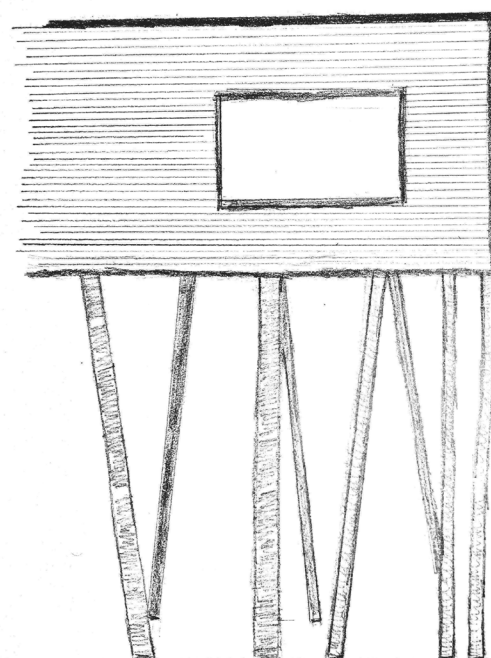
West Elevation



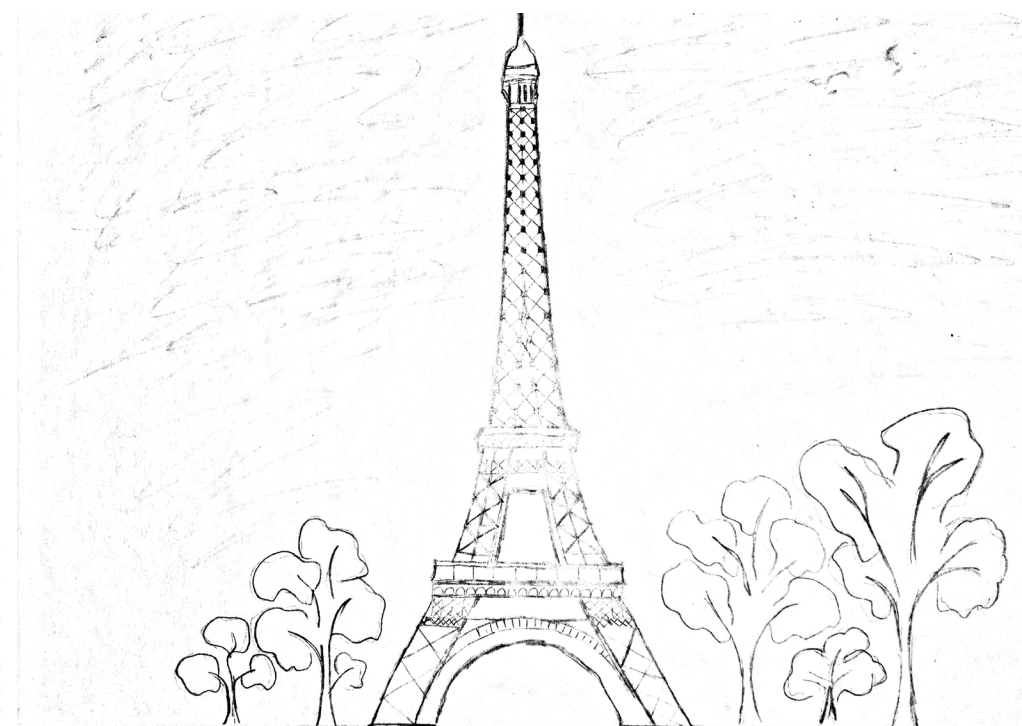
East Elevation



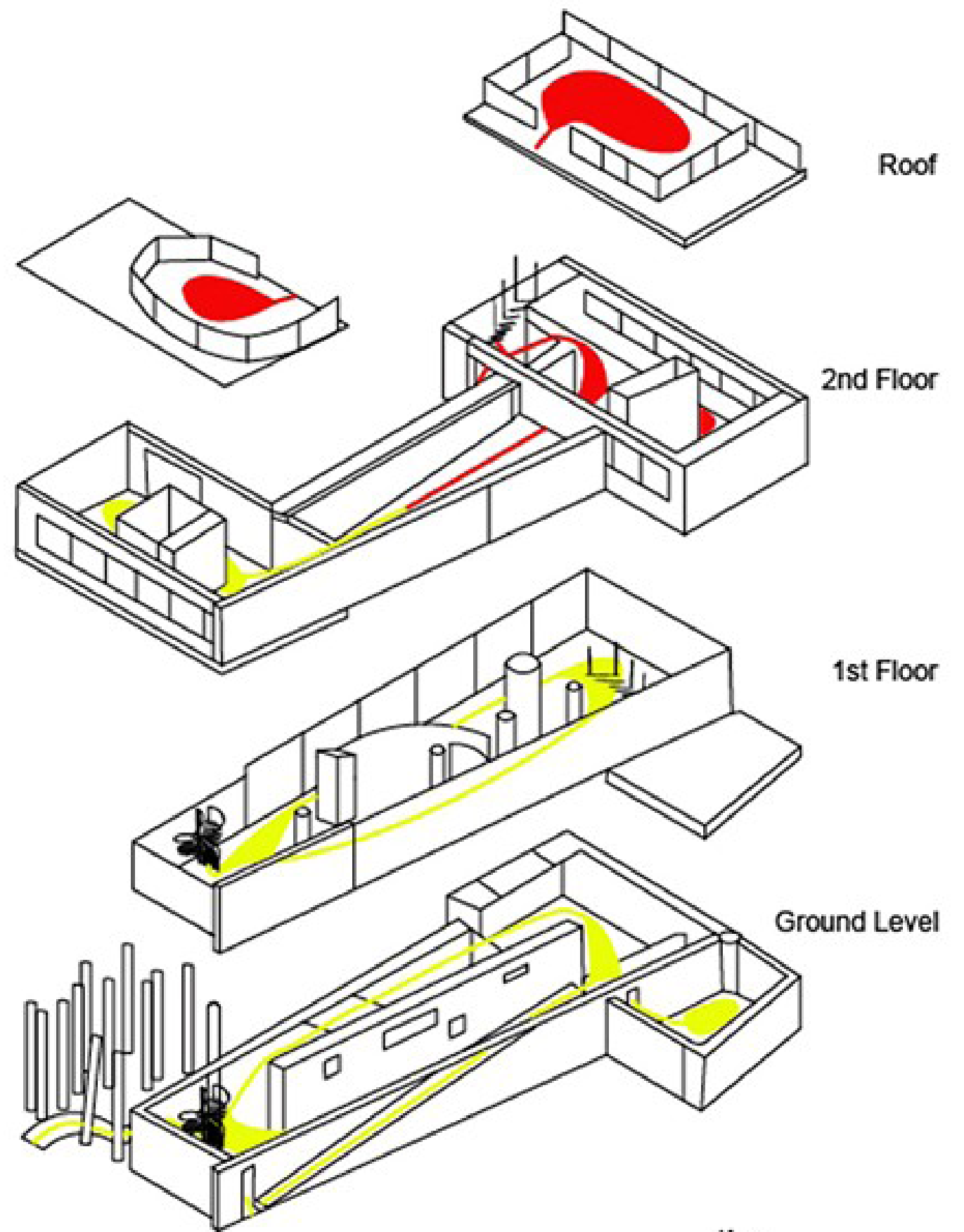
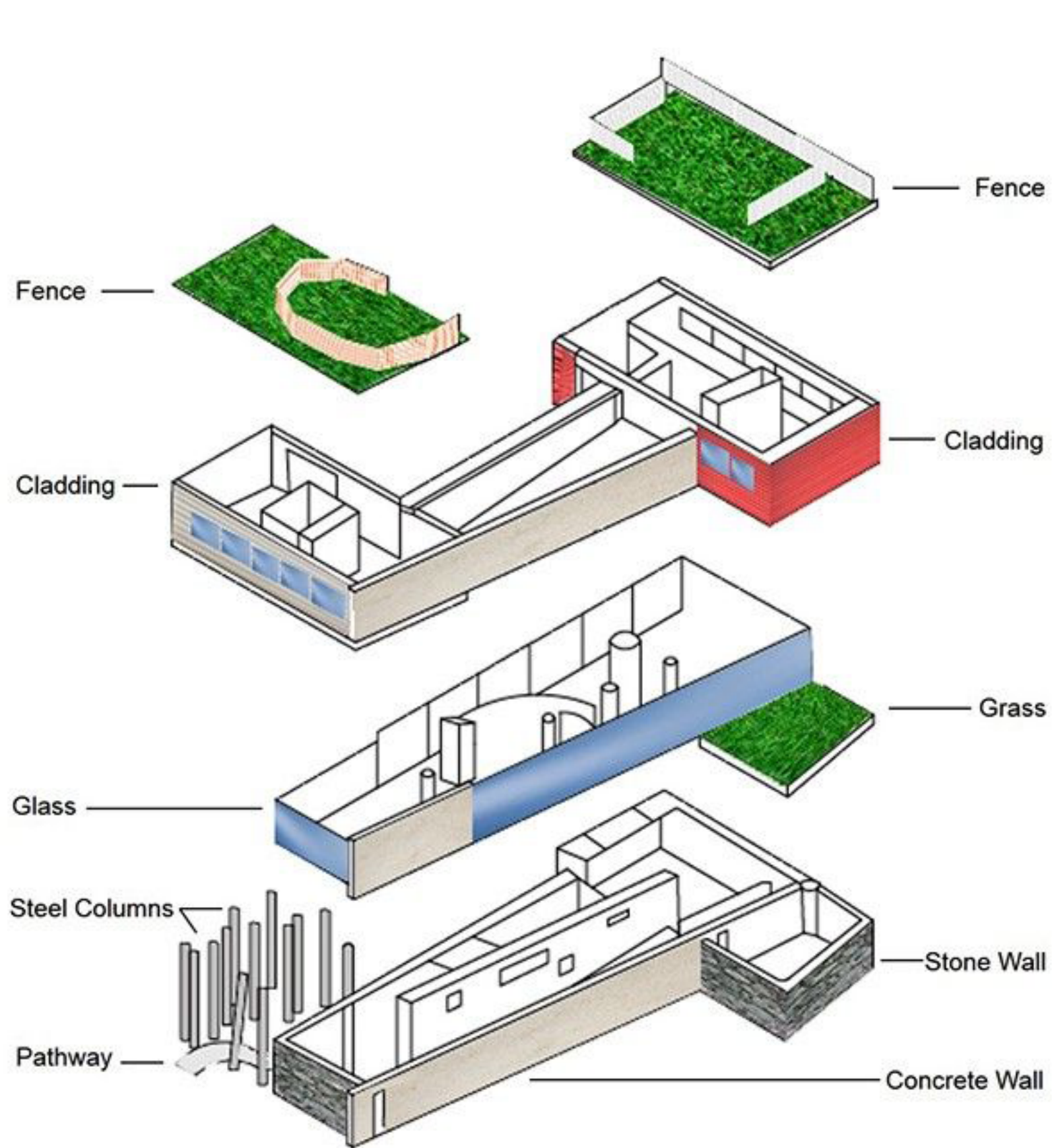
Structural scatch



Structural scatch



Scatch of view



**Key:**  
■ Parents  
■ Daughter + Parents