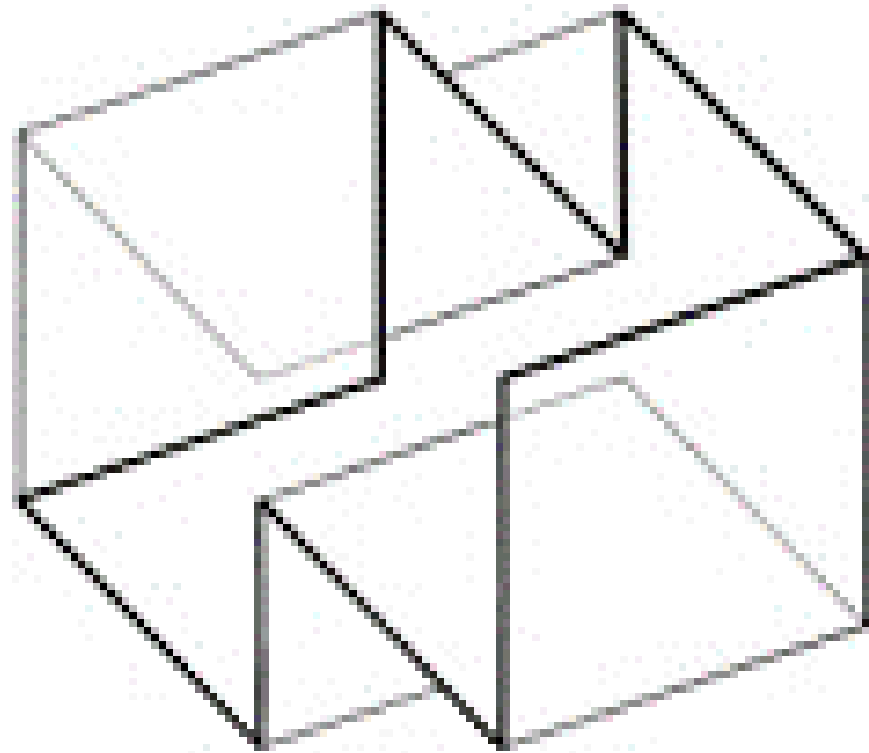
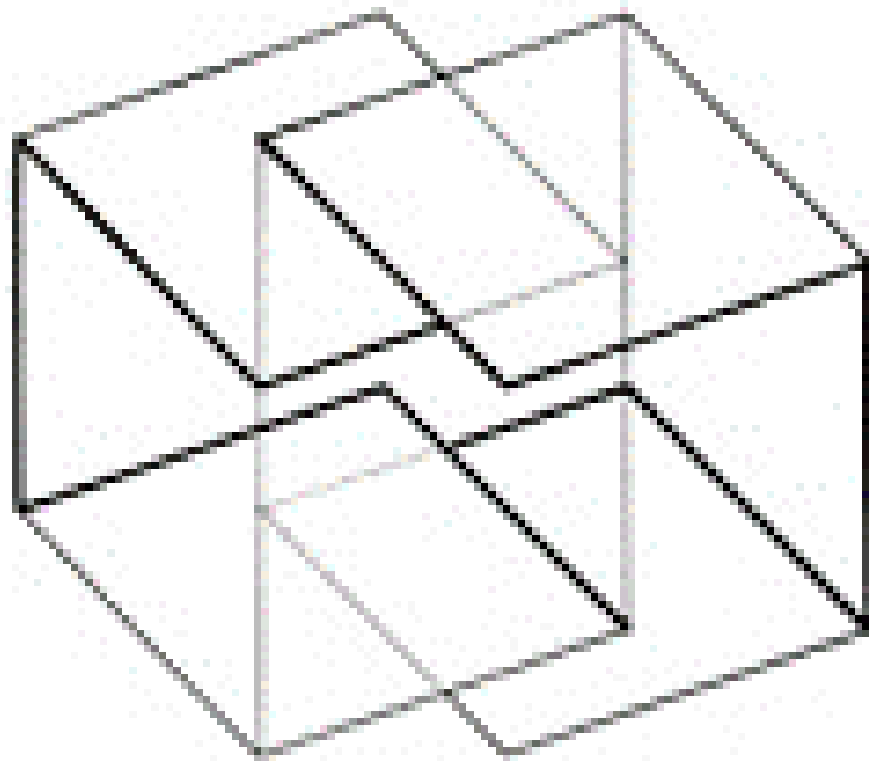
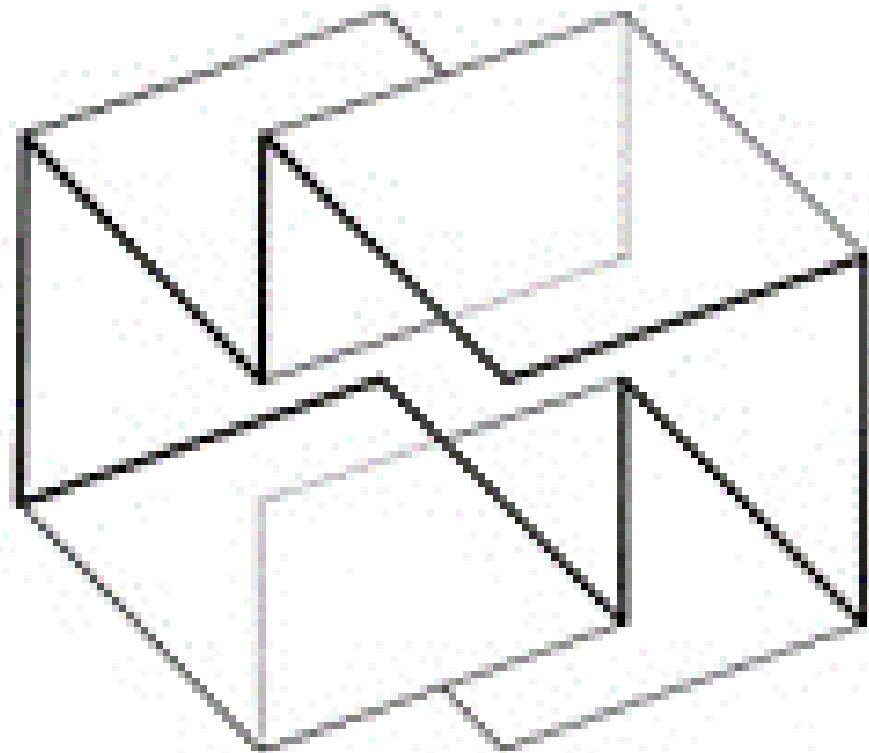
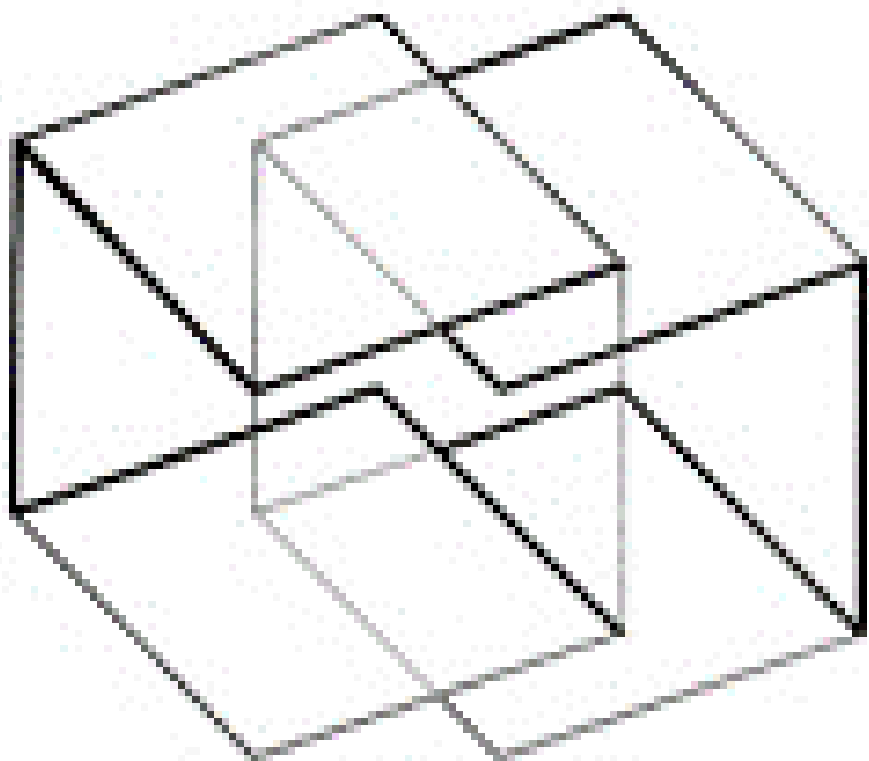


Lesson 2: Linework:

A Graphic Language expressed by LINEWEIGHT & LINETYPE



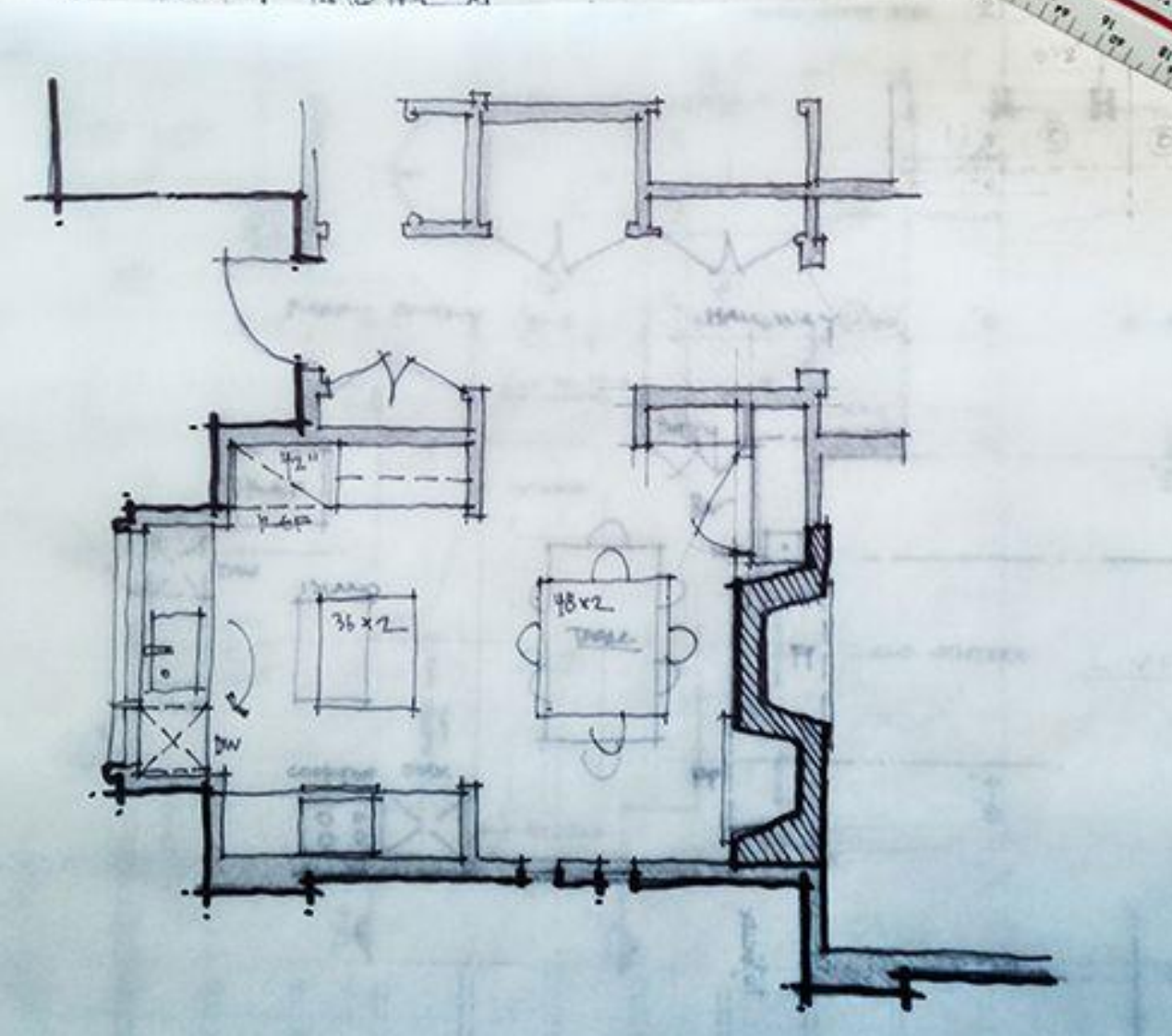
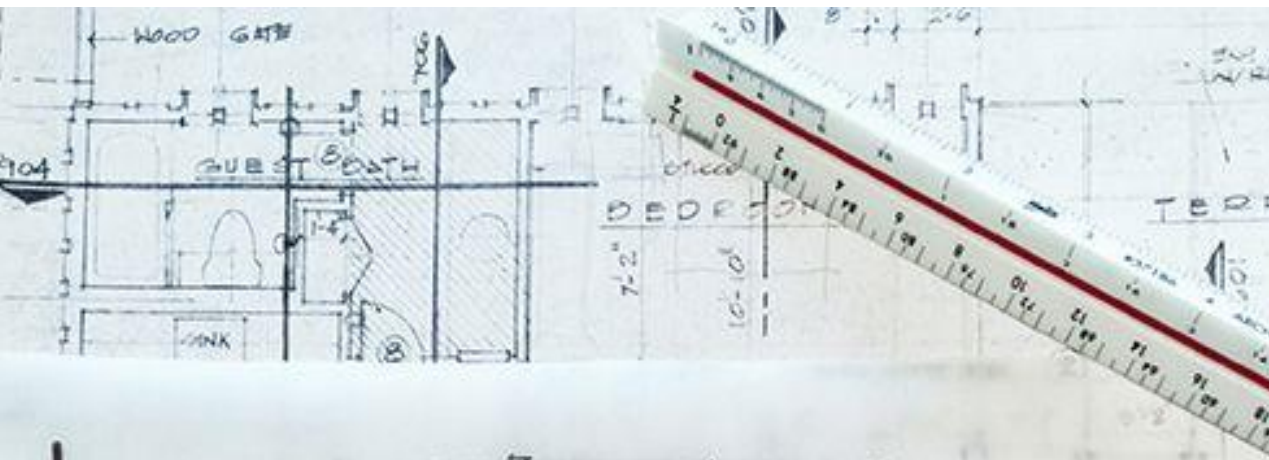
CONSTRUCTION LINES & GUIDELINES

WHY do we use LINEWEIGHT?

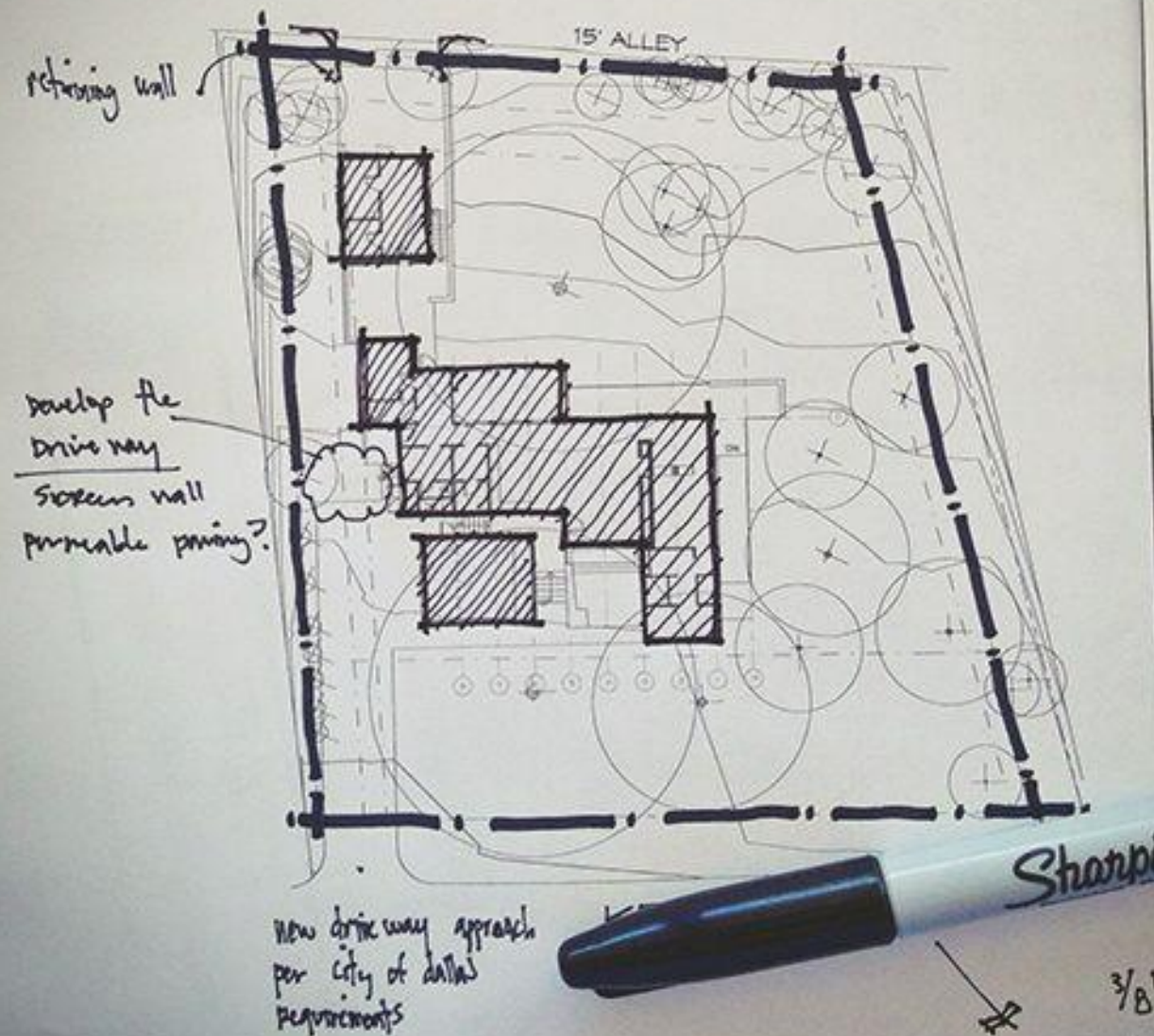


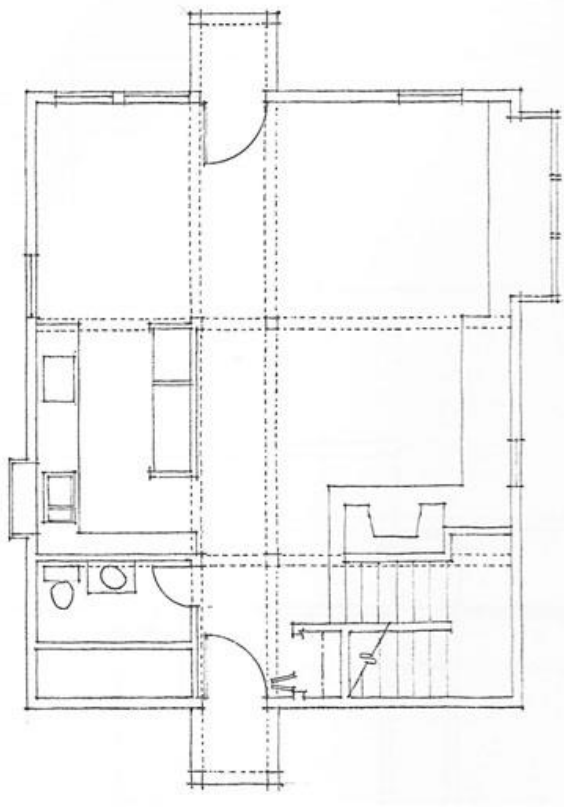
CONSTRUCTION LINES & GUIDELINES

HOW do we use LINEWEIGHT?



Dimensional controls
building footprint (rather than floor plan)

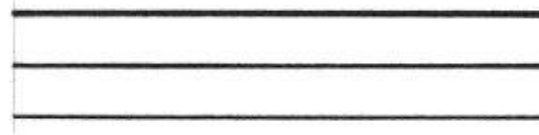
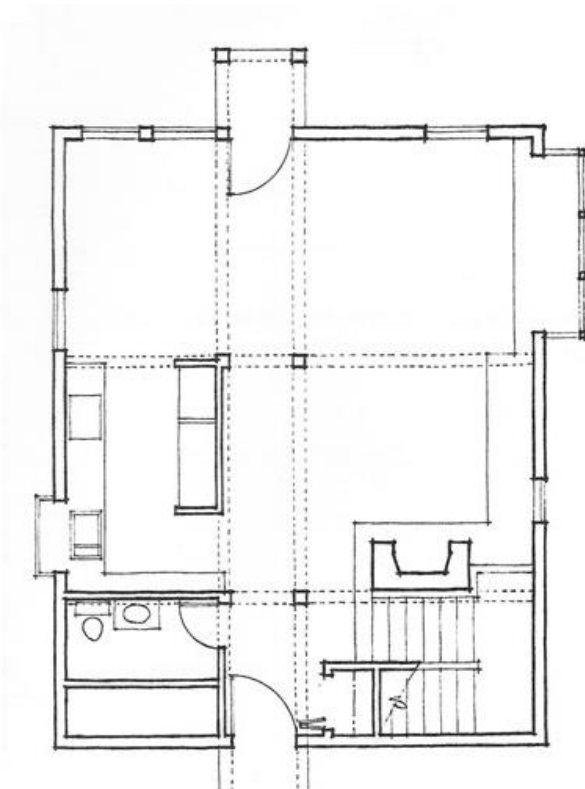




Single lineweight

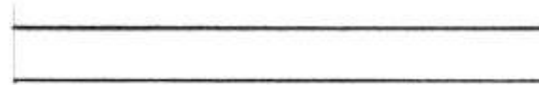
LINEWEIGHT — VISUAL LIGHTNESS / DARKNESS & WIDTH OF A LINE. ADDS VISUAL LEGIBILITY & HEIRARCHY TO A DRAWING.

A LEGIBLE DRAWING CONTAINS 3-4 **VARIATIONS** OF LINEWEIGHT. **UNIFORMITY** & **CONSISTANCY** ARE KEY!



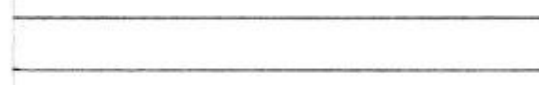
Heavy

- Heavy solid lines are used to delineate the profiles of plan and section cuts (see pages 54 and 71) as well as spatial edges (see page 99).
- Use H, F, HB, or B leads; pressing too hard to draw a bold line indicates that you are using too hard of a lead.
- Use a lead holder or draw a series of closely spaced lines with a 0.3 mm or 0.5 mm mechanical pencil; avoid using a 0.7 mm or 0.9 mm pencil for drawing heavy line weights.



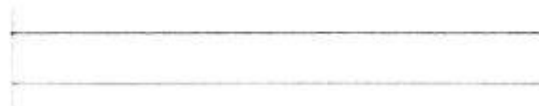
Medium

- Medium-weight solid lines indicate the edges and intersections of planes.
- Use H, F, or HB leads.



Light

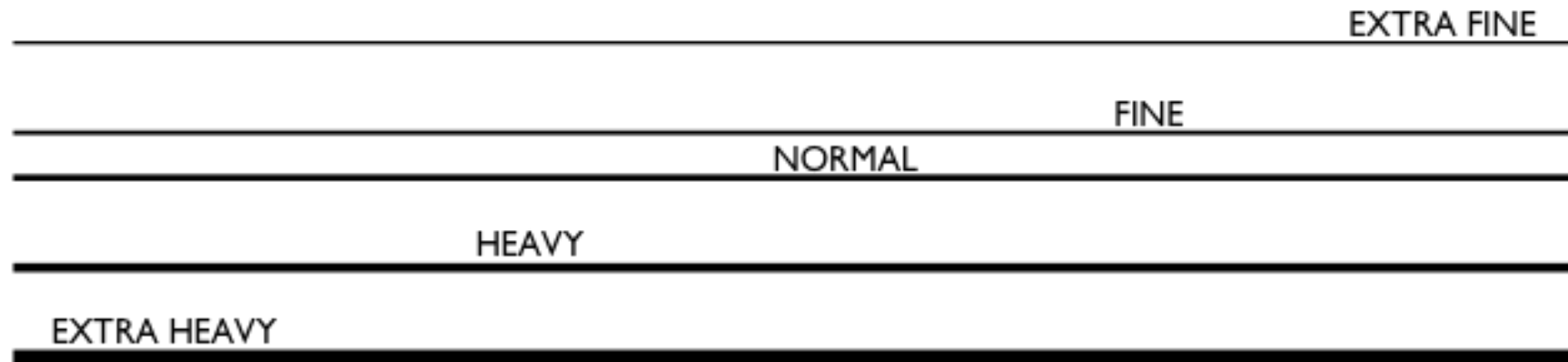
- Lightweight solid lines suggest a change in material, color, or texture, without a change in the form of an object.
- Use 2H, H, or F leads.



Very Light

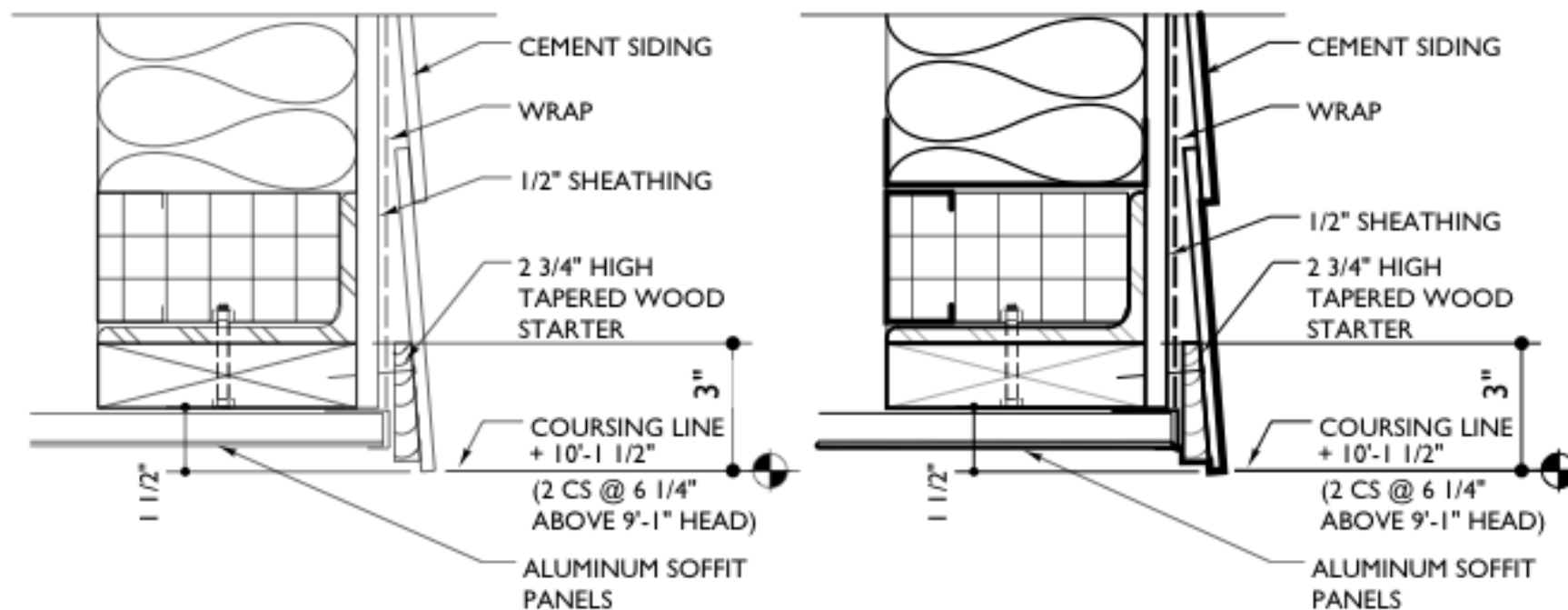
- Very light solid lines are used to lay out drawings, establish organizing grids, and indicate surface textures.
- Use 4H, 2H, H, or F leads.

LINEWEIGHT



The viewer should be able to distinguish between your linetypes when viewing your drawing at arms length.

WHAT DIFFERENCE DOES IT MAKE?



LINEWEIGHT:

PENCIL GRADE & USE

HARD LEAD



4H



2H



H



F



HB



B

SOFT LEAD

4H / 2H: LIGHT, HARD LEAD

- GUIDELINES
- WILL PRODUCE UN-ERASABLE GROOVE IN PAPER IF TOO MUCH PRESSURE IS APPLIED
- FINE HATCHES

H / F: MEDIUM LIGHT, FINE POINT

- SMALL LETTERING, BODY TEXT
- DETAILS
- MATERIAL HATCHES

HB: MEDIUM DARK

- TITLES, LARGE LETTERING
- OBJECT OUTLINES

B: DARK, SOFT LEAD

- BORDERS, SECTION CUTS

LINETYPES

THIN LINE:



- EDGES IN VIEW
- SURFACE FEATURES

NORMAL LINE:



- WALLS IN PLAN
- PRINCIPAL ELEMENTS
- LEADERS
- DIMENSION LINES

HEAVY LINE:



- FINISH GRADE
- ELEMENTS CUT IN SECTION

CENTERLINE:



- BUILDING CONTROL LINES
- COLUMN CENTERLINES

HIDDEN LINE:

(OBJECT NOT SEEN **IN FRONT OF** THE VISION PLANE)



- HIDDEN ELEMENTS
- FOOTINGS

OVERHEAD LINE:

(OBJECT NOT SEEN **BEHIND** THE VISION PLANE)



- OVERHANGS
- CABINETS
- CEILING FEATURES

PROPERTY LINE:



- PROPERTY LINES
- BUILDING CONTROL LINES

MATCH LINE:

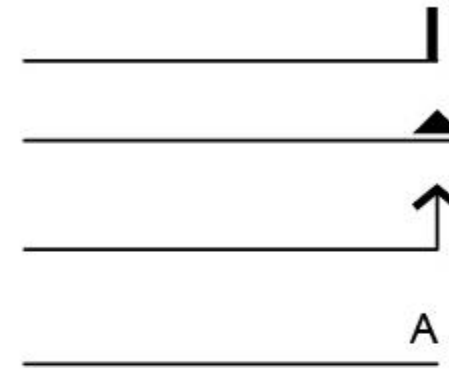


MATCH LINE - SEE SHEET A204

MATCH LINE - SEE SHEET A205

USED TO DIVIDE A DRAWING INTO AREAS
WHEN DRAWING SIZE EXCEEDS SHEET SIZE

SECTION LINES



BREAK LINE



MOVEMENT / PHANTOM LINE



CENTER LINE



DASHED LINE



LEADER LINE

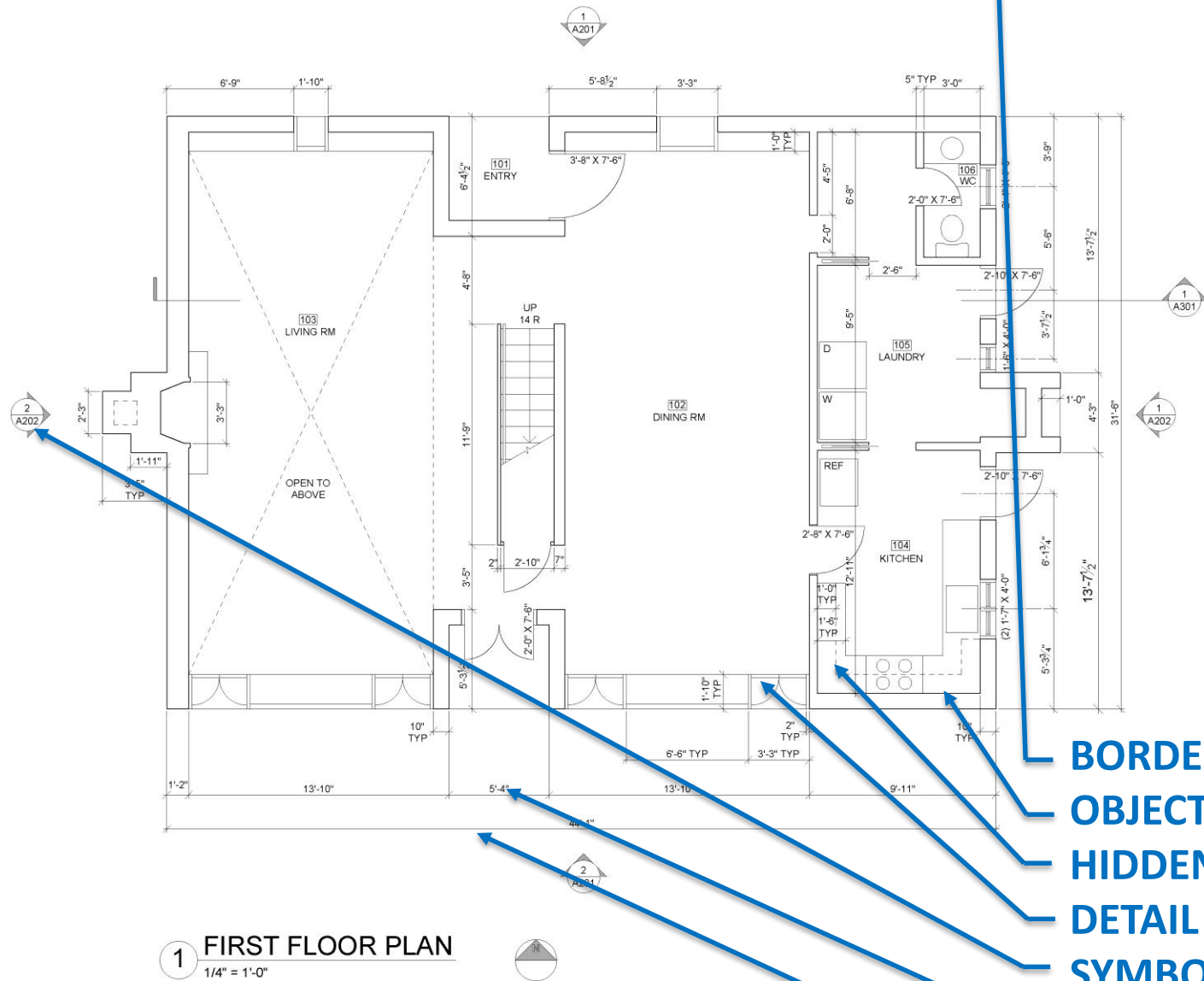


LEADER LINE WITH ELBOW



LINEWEIGHT & LINETYPES:

PLAN APPLICATION



- BORDERS (B)
- OBJECT (HB)
- HIDDEN (F)
- DETAIL (H/F)
- SYMBOLS (H/F)
- TEXT (H/F)
- DIMENSION (H)

ESHERICK HOUSE
204 SUNRISE LANE
PHILADELPHIA, PA 19118
LOUIS KAHN , 1961

NOTES:

NEW YORK CITY
COLLEGE OF
TECHNOLOGY

DRAWN BY:
YOUR NAME

DATE: _____

SCALE:

FIRST FLOOR
PLAN

A-101

SYMBOLS:

000
ROOM
NAME

ROOM ID

2
A202

ELEVATION

2
A202

SECTION

000.0

DOOR ID

0

WINDOW ID

ROOF
+ 19'-10"

ELEVATION HEIGHT

00

REVISION ID

ABBREVIATIONS:

ABV ABOVE
AFF ABOVE FINISH FLOOR
BLDG BUILDING
CLG CEILING
CMU CONCRETE MASONRY UNIT
DEM DETAIL
DWG DRAWING
ELEV ELEVATION
EQ EQUAL
GWB GYPSUM WALL BOARD
MTD MOUNTED
NTS NOT TO SCALE
OC ON CENTER
TYP TYPICAL
VIF VERIFY IN FIELD
W/ WITH

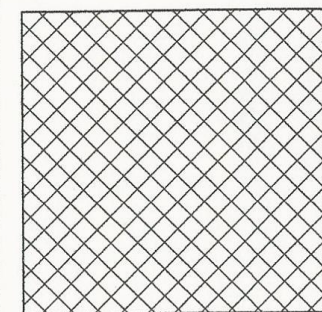
EXTRA CREDIT!

ESHERICK HOUSE

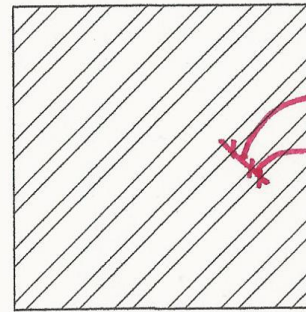
204 SUNRISE LANE
PHILADELPHIA, PA 19118
LOUIS KAHN, 1961

NOTES:

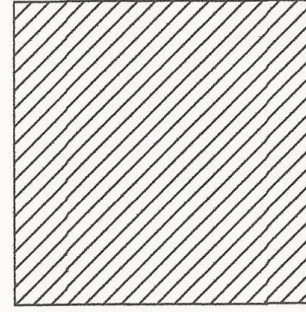
MATERIALS & LINETYPES:



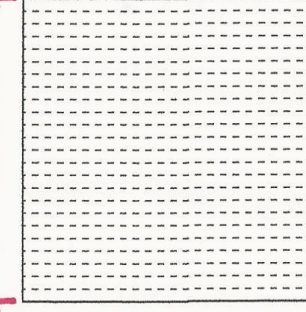
CMU
F
1/8" x 1/8"
@ 45°



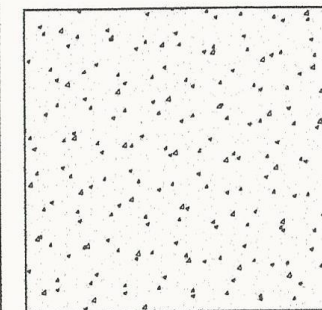
STEEL
F
1/4"
1/8"
@ 45°



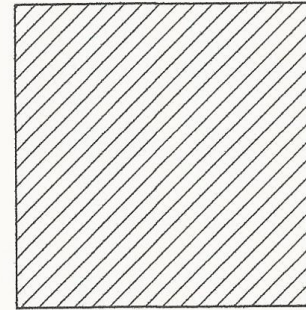
OBJECT
LINE
HB
45°



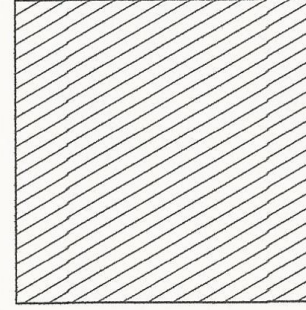
HIDDEN
LINE
F
1/8" PASH
SPACED 1/16"



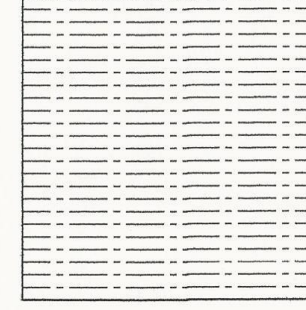
CONCRETE
F



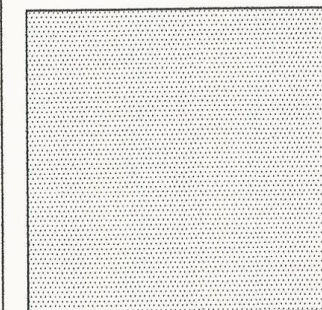
BRICK
F
45°



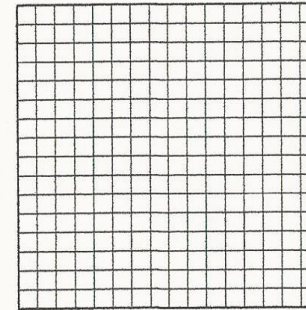
DETAIL
LINE
F
30°



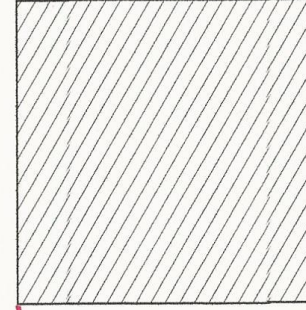
CENTER
LINE
H
ALTERNATE
LONG (3/4")
? SHORT (1/8")
SPACED 1/16"



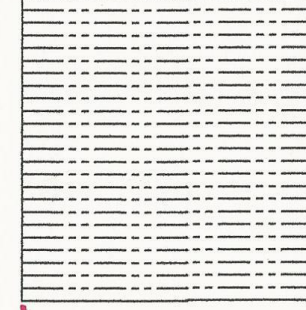
GWB
HB



RIGID
INSULATION
F
1/8" x 1/8"



DIMENSION
LINE
H
60°



SECTION
LINE
B
LONG (3/4")
TWO SHORT
(1/8")
SPACED 1/16"

NEW YORK CITY
COLLEGE OF
TECHNOLOGY

DRAWN BY:
NAME

DATE:

SCALE:

SYMBOLS,
MATERIALS &
ABBREVIATIONS

A-001