

The image shows a set of architectural drawings for the Margaret Eschrick House. It includes a 'PILE LOCATION PLAN' at the top left, a 'SECOND FLOOR PLAN' at the top right, a 'BASEMENT FLOOR PLAN' at the bottom left, and a 'FIRST FLOOR PLAN' at the bottom right. The drawings are detailed, showing room layouts, structural elements, and dimensions. A title block in the bottom right corner identifies the project as 'MARGARET ESCHRICK HOUSE' and lists the architect as 'LEON KAHN ARCHITECT'.

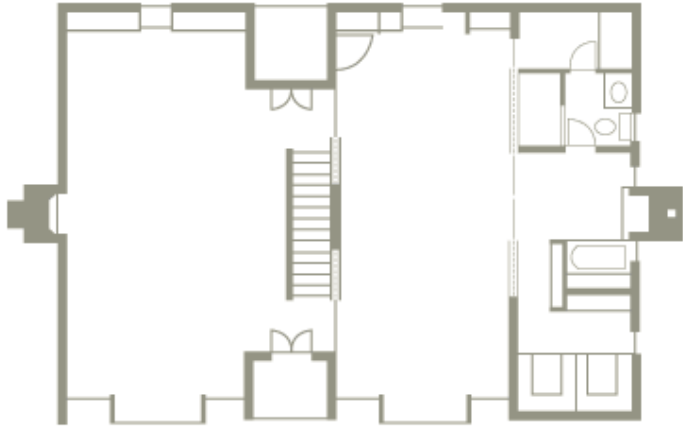
Working Drawings: Floor Plans

CMCE 1110 Construction Drawings
Professor Anderson

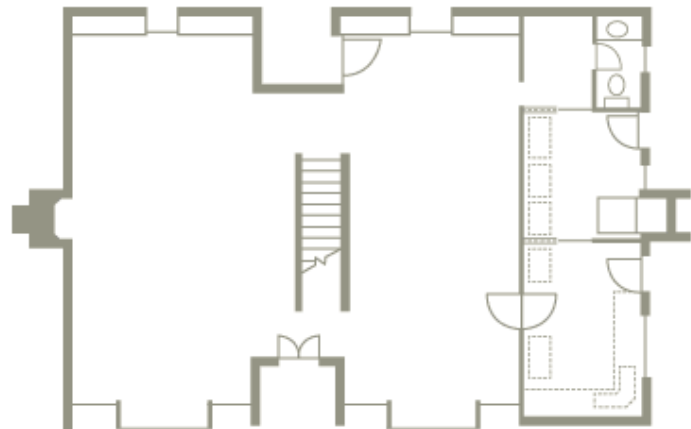
Escherick House

Louis Kahn, 1959-1961

204 Sunrise Lane, Philadelphia, PA



SECOND FLOOR PLAN

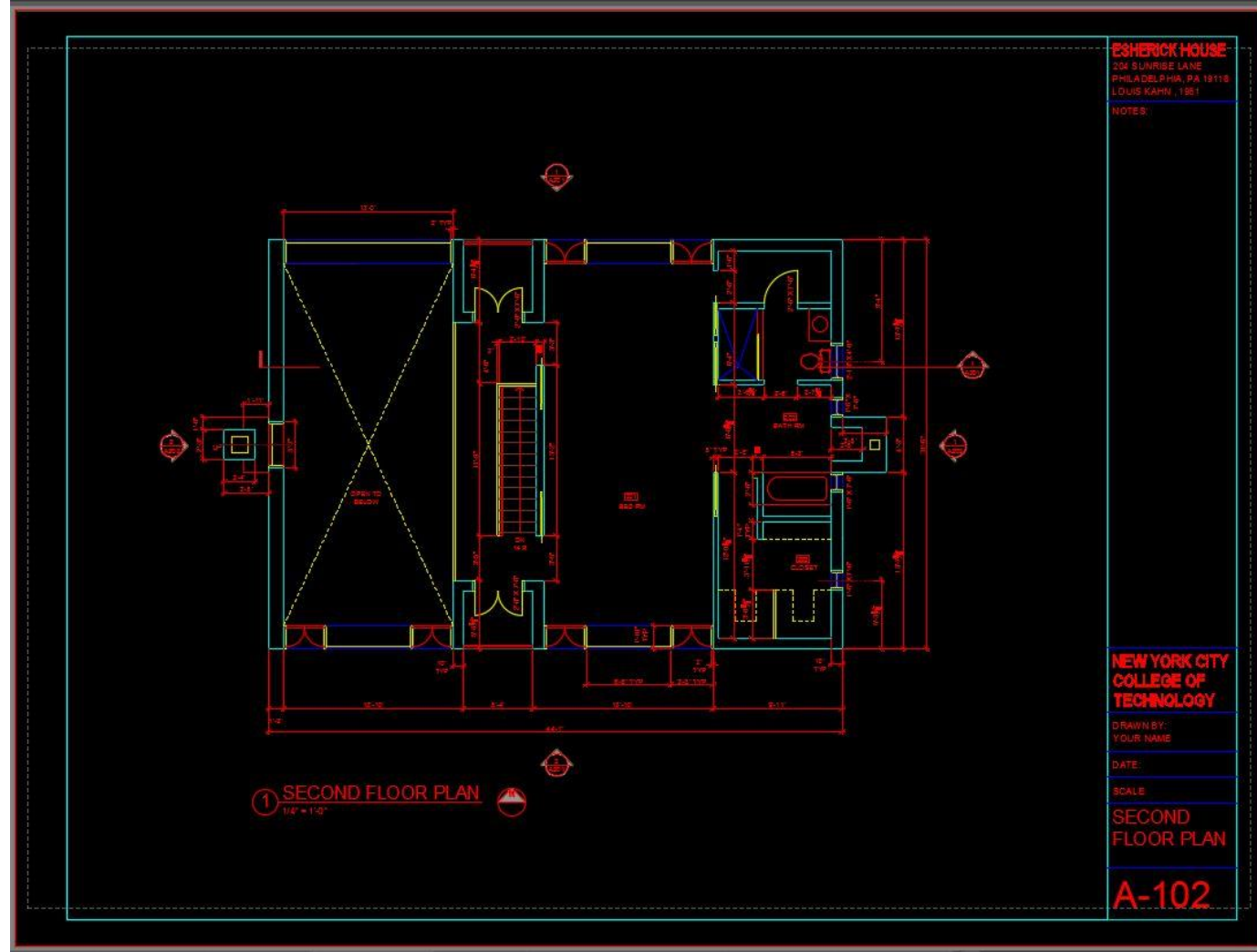


FIRST FLOOR PLAN



CAD Techniques

- Rotate
- REVIEW



Tools we have learned:

- Arc
- Ellipse
- Blocks
- Dimensioning
- Line and X-Lines
- Offset

- Extend/Trim
- Circle
- Copy/Paste
- Ortho Mode and Polar Tracking
- Object Snap
- Layers and Color Styles
- Line-types

- Text Styles
- Paper Space vs Model Space
- Viewports

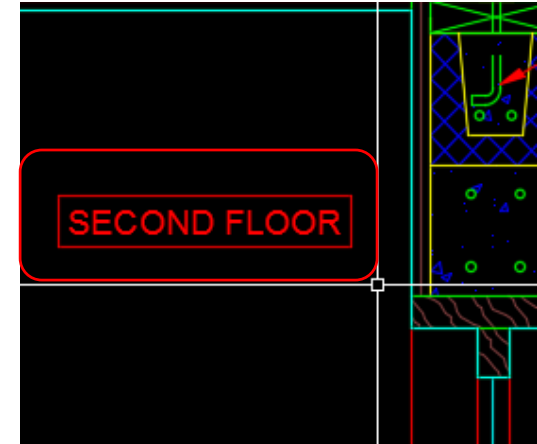
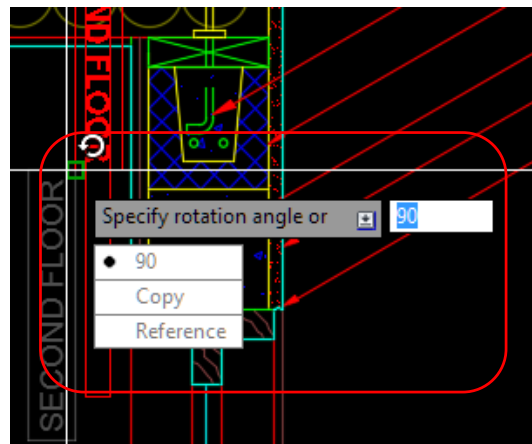
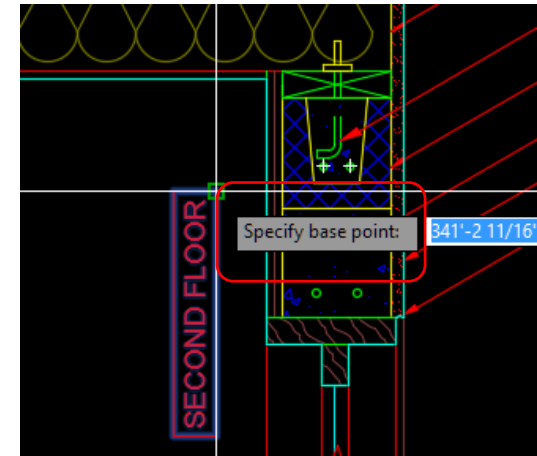
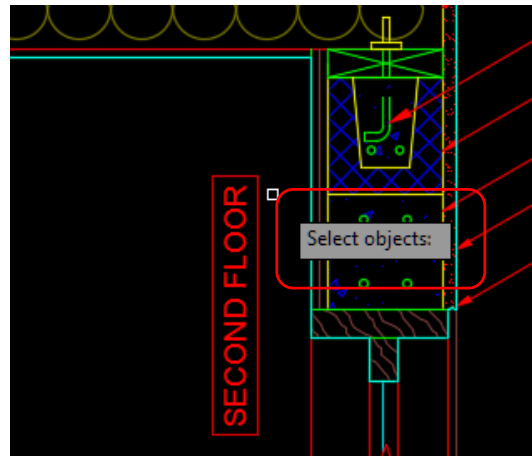
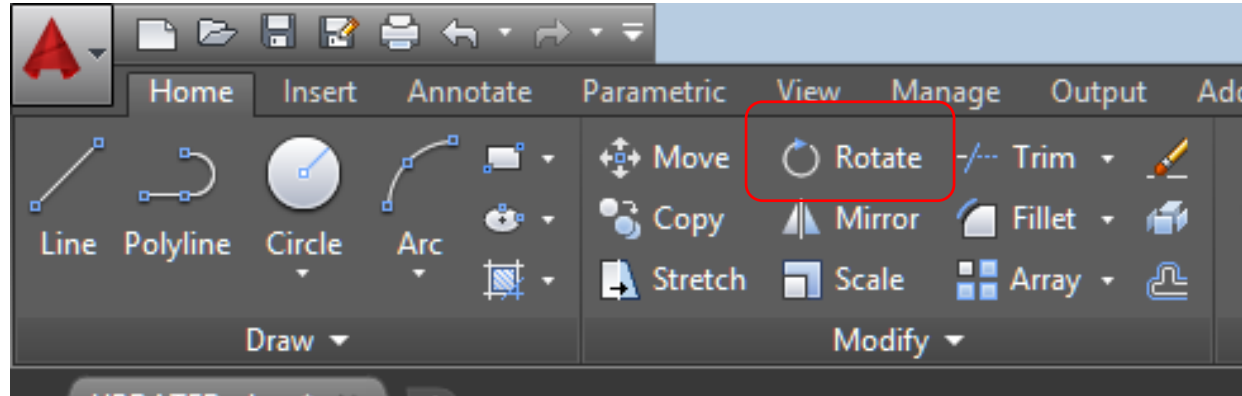
Rotate

You can *rotate* an object about a base point.

Activate: Home tab, Modify subtab or type "ro"

Resources:

<https://knowledge.autodesk.com/support/autocad/learn-explore/caas/CloudHelp/cloudhelp/2015/ENU/AutoCAD-Core/files/GUID-9DB2CB8C-7FB7-45A4-83A7-82FFC53FC7E1-htm.html>



Process: Floor Plans

1. Regulating Lines

- a) Building Control Lines
- b) Overall Dimensions
- c) Structural Lines

2. Walls

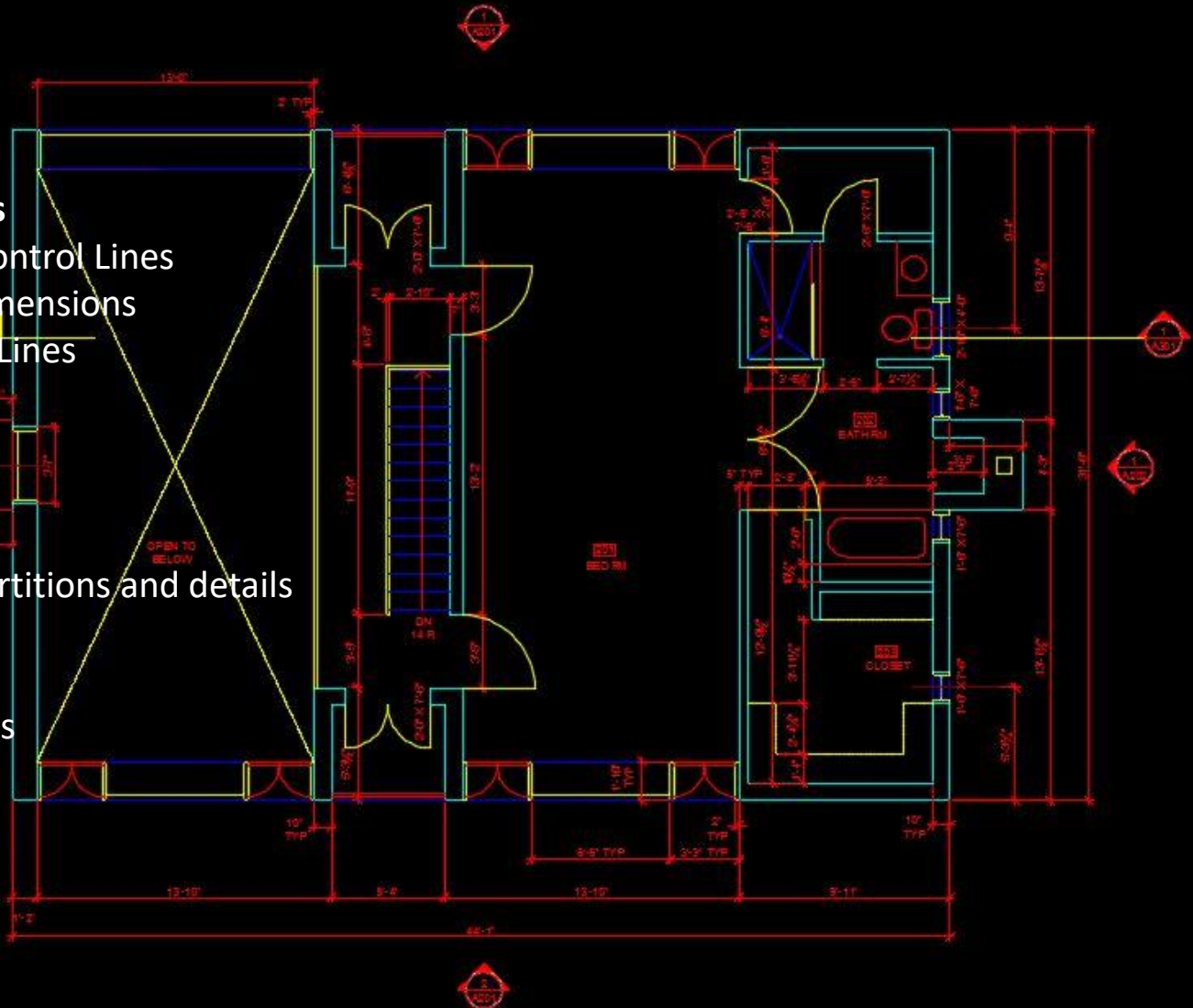
- a) Walls
- b) Doors
- c) Windows
- d) Interior Partitions and details

3. Annotation

- a) Symbols
- b) Dimensions
- c) Notes

4. Sheet

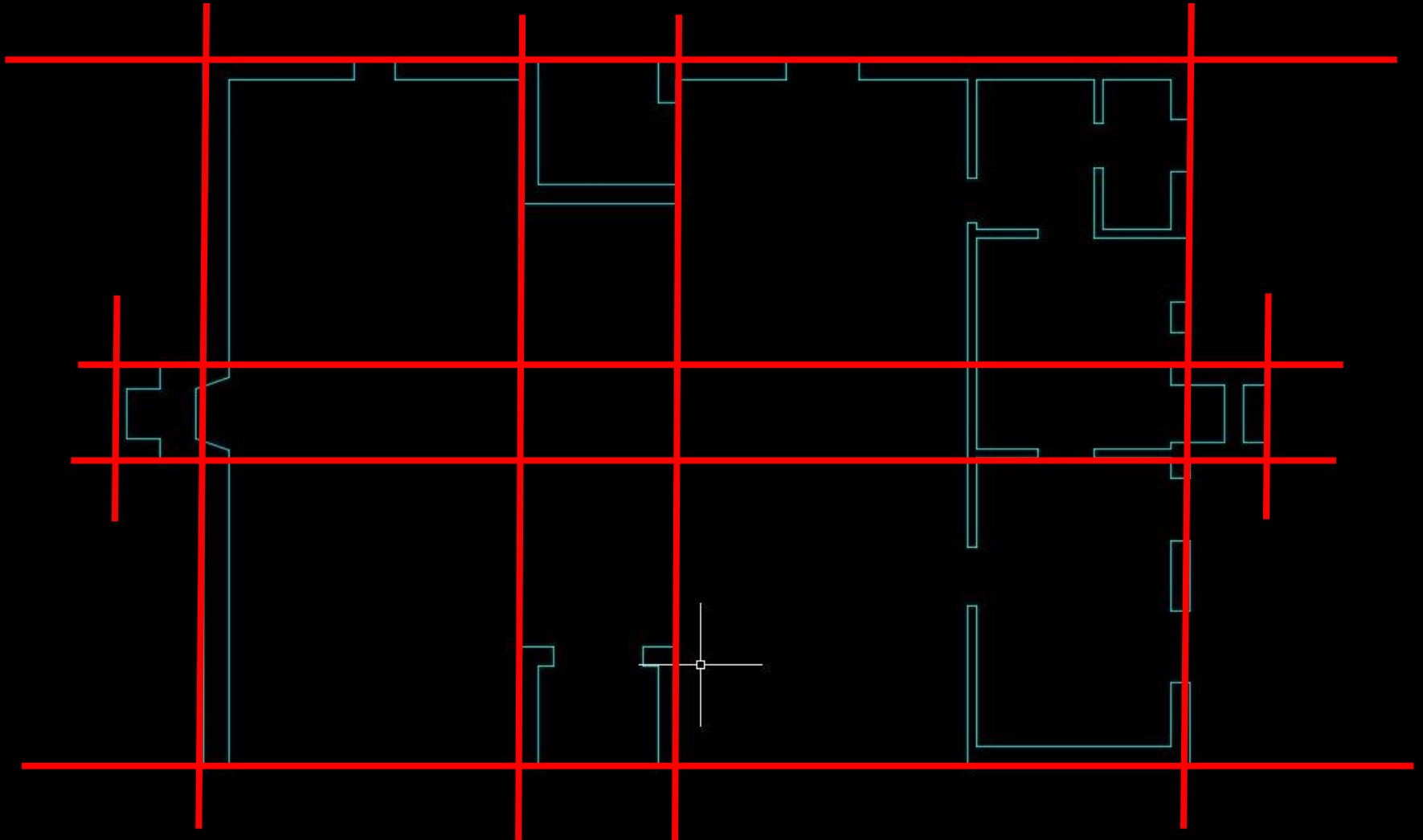
- a) Viewport
- b) Titles
- c) Titleblock



Process: Floor Plans

1. Regulating Lines

- a) Building Control Lines
- b) Overall Dimensions
- c) Structural Lines



Process: Floor Plans

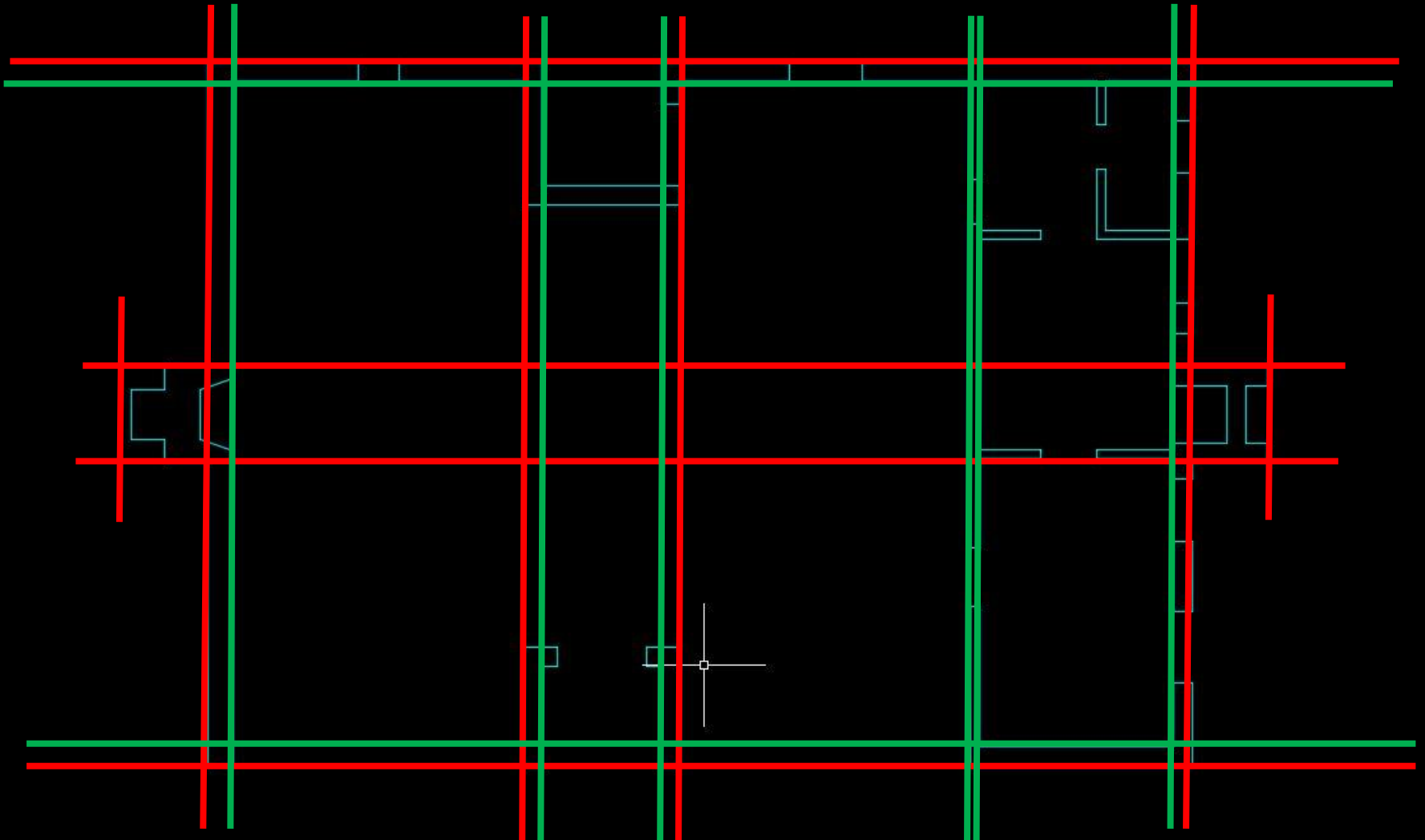
2. Walls

a) Walls

b) Doors

c) Windows

d) Interior Partitions and details



Process: Floor Plans

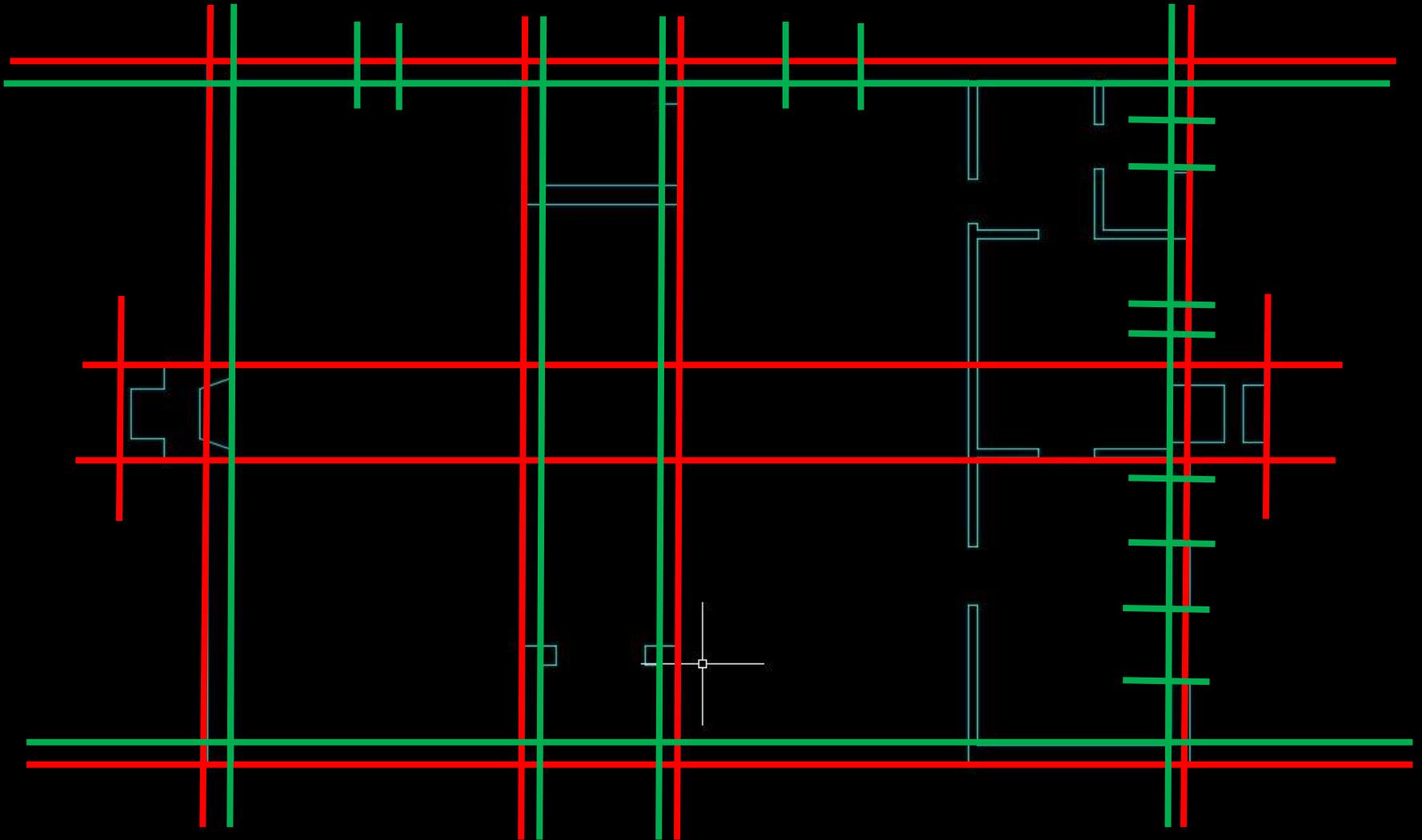
2. Walls

a) Walls

b) Doors

c) Windows

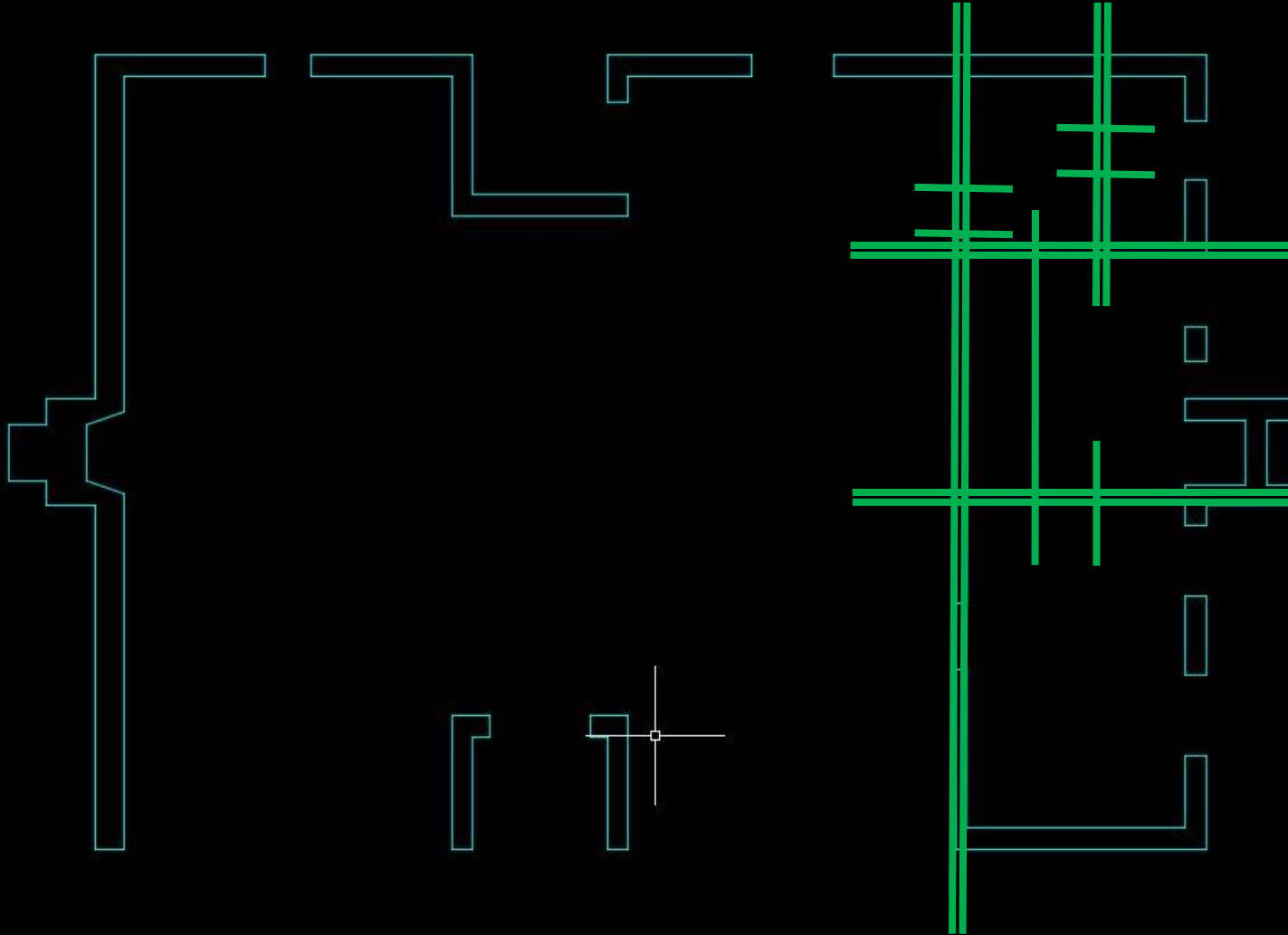
d) Interior Partitions and details



Process: Floor Plans

2. Walls

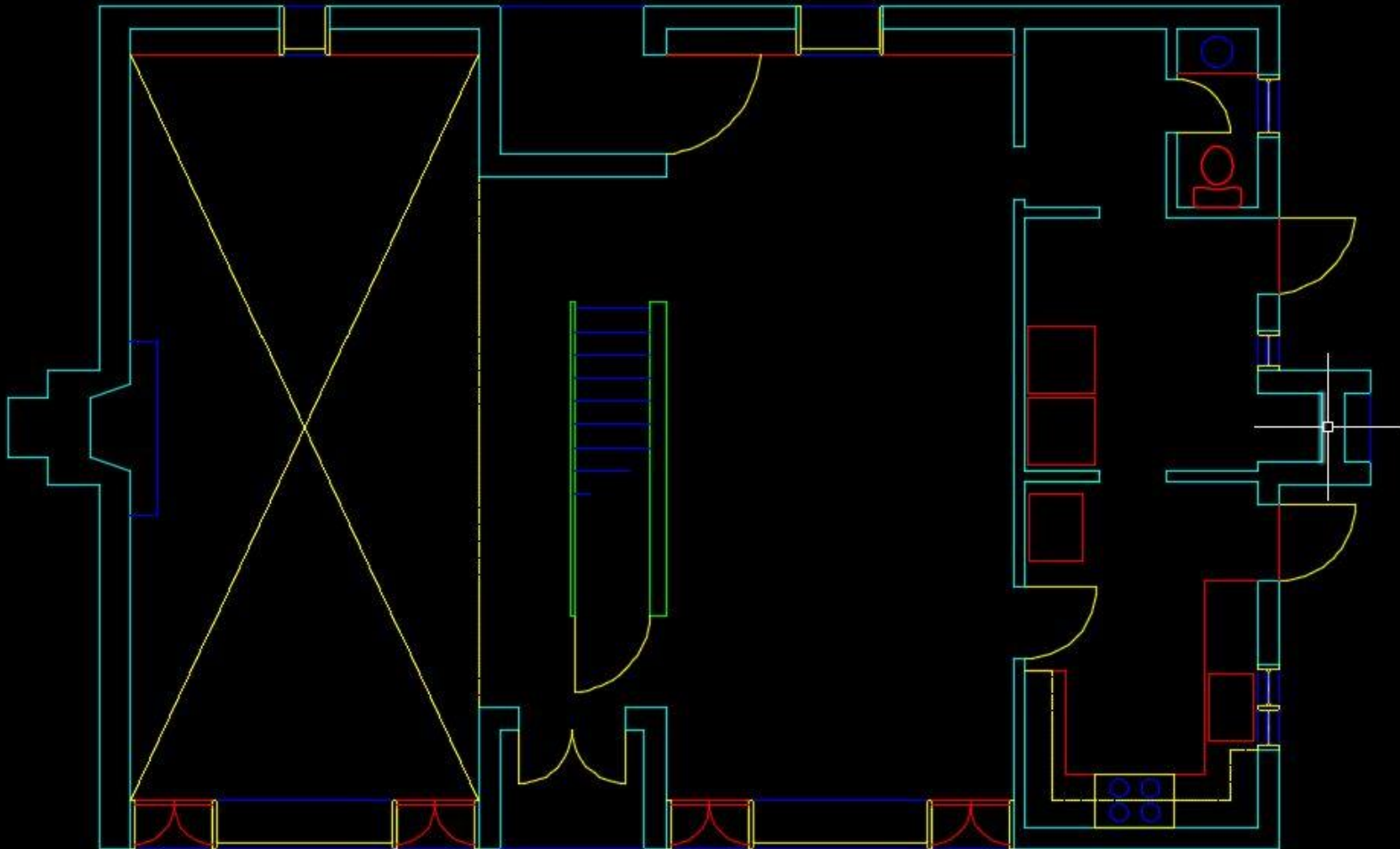
- a) Walls
- b) Doors
- c) Windows
- d) Interior Partitions and details



Process: Floor Plans

2. Walls

- a) Walls
- b) Doors
- c) Windows
- d) Interior Partitions and details



Assignment Specifications:

- Create a Dropbox folder “A-004”
- Upload your progress drawing at the end of this class to your Dropbox folder.
Name files: Last Name First Name – Assignment Title.
- Upload final submission *BEFORE THE START OF THE NEXT CLASS*
- Submit 8.5”x11” plot of each drawing *AT THE START OF THE NEXT CLASS*