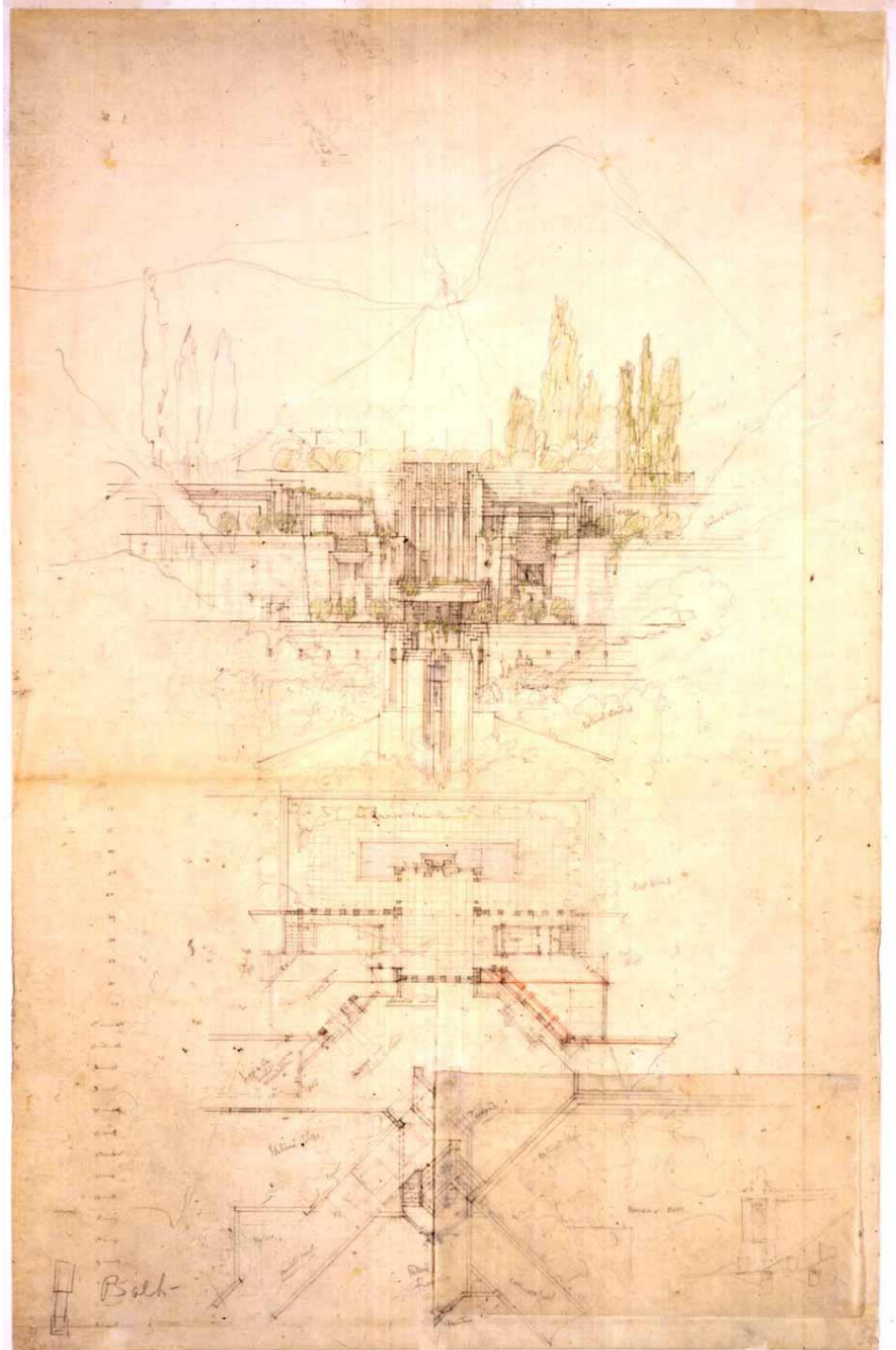


Working Drawings: Exterior Elevations

CMCE 1110 Construction Drawings
Professor Anderson

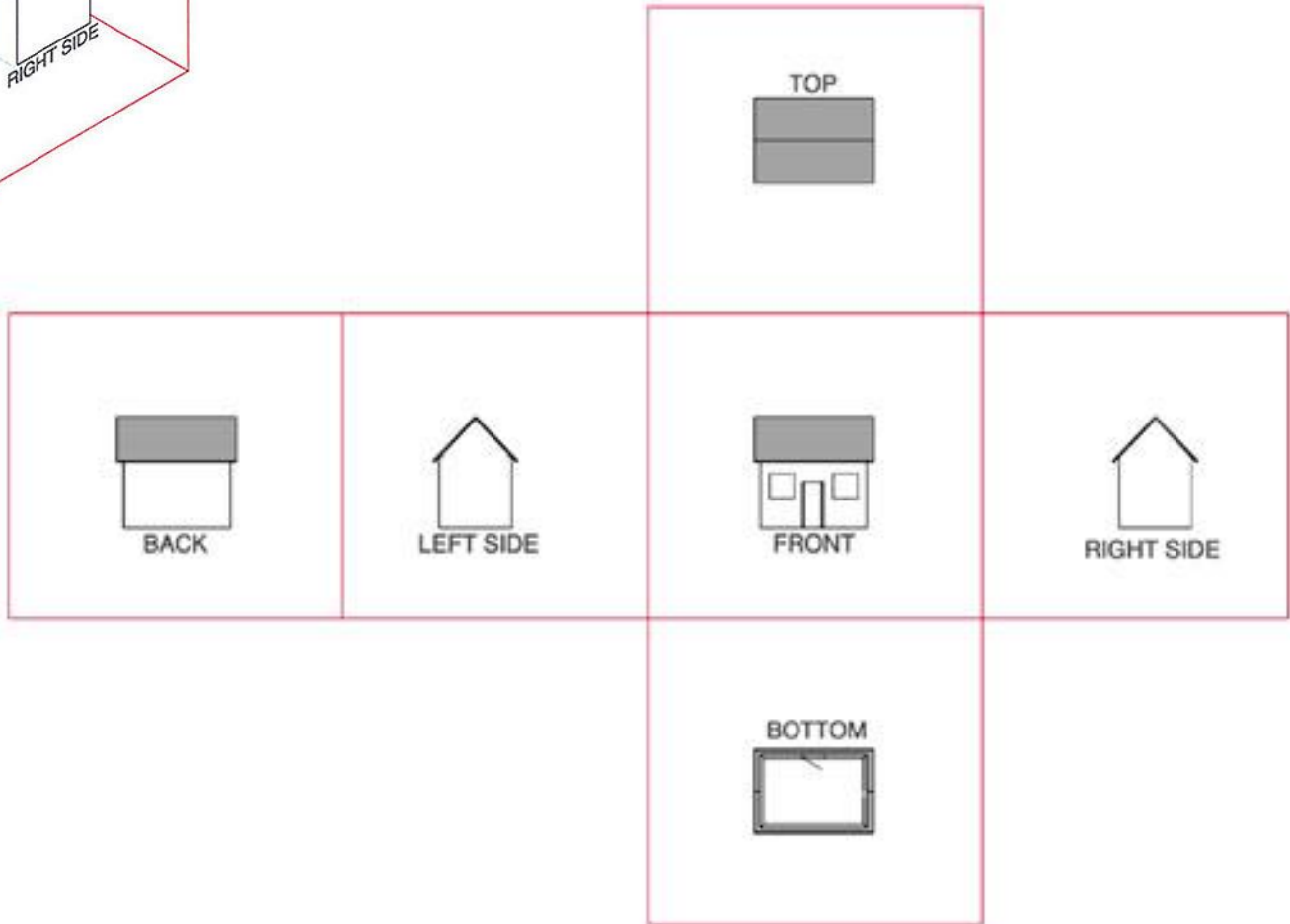
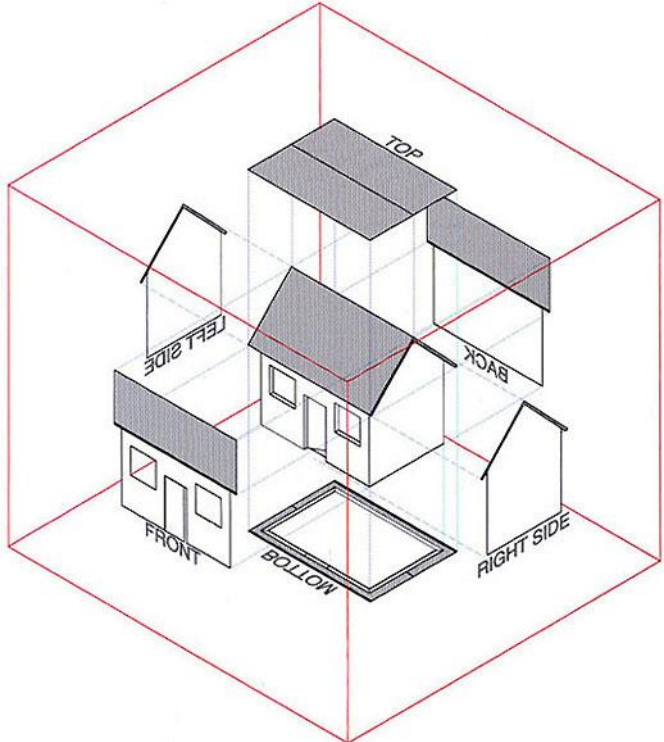




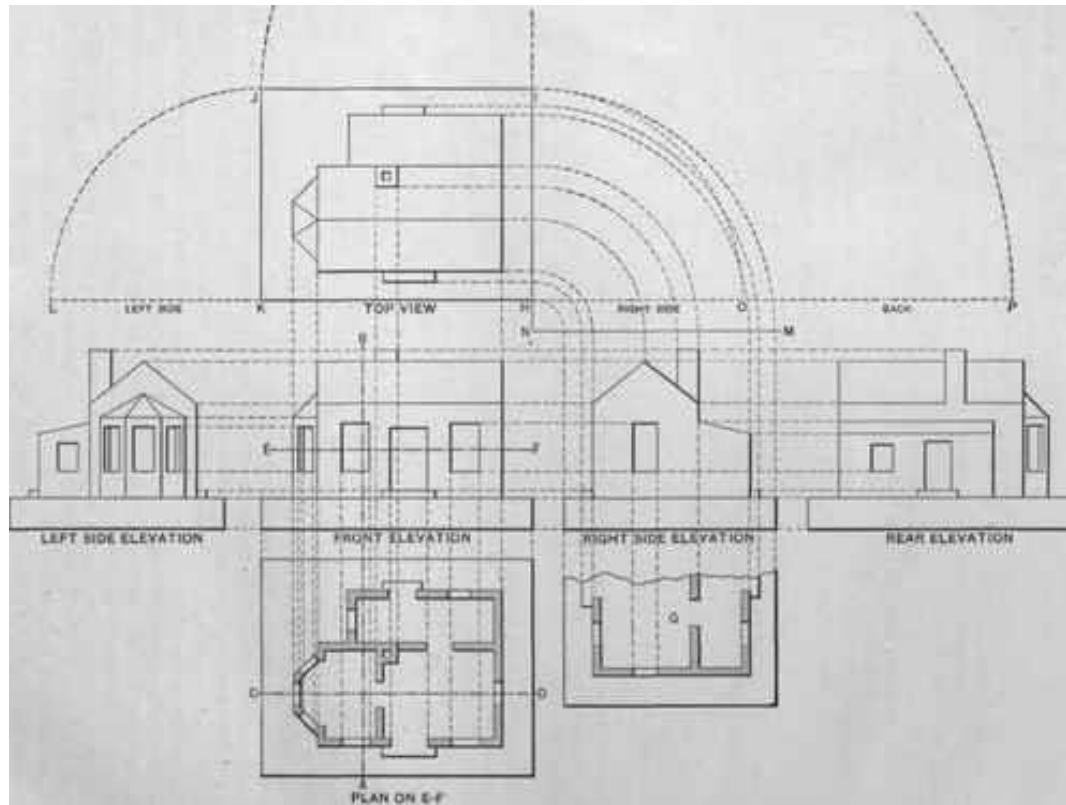
Gordon Matta Clark, *Splitting*
1974

Building Cuts Series

Principles of Orthographic Projection



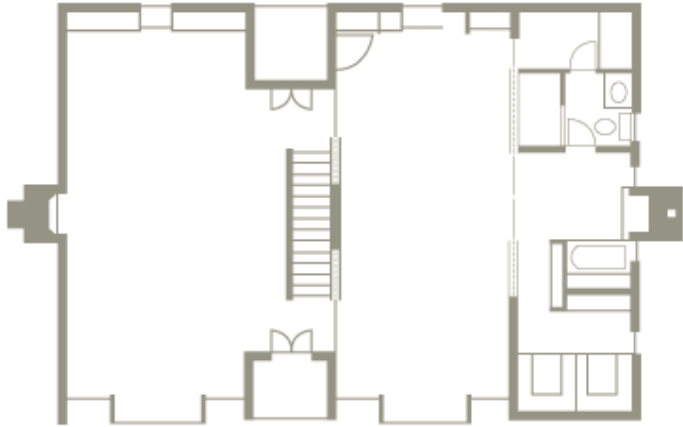
Principles of Orthographic Projection



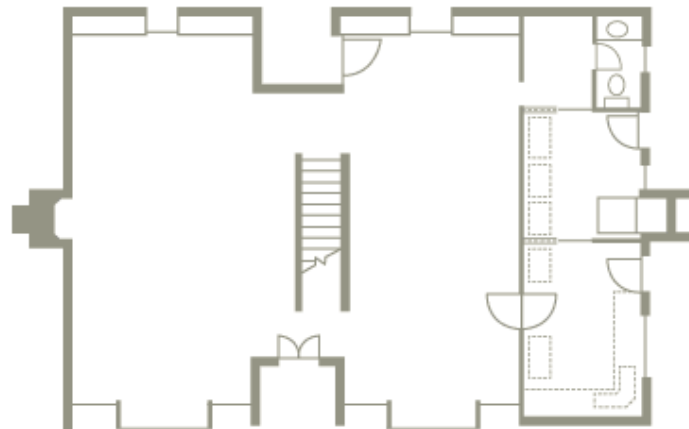
Escherick House

Louis Kahn, 1959-1961

204 Sunrise Lane, Philadelphia, PA



SECOND FLOOR PLAN

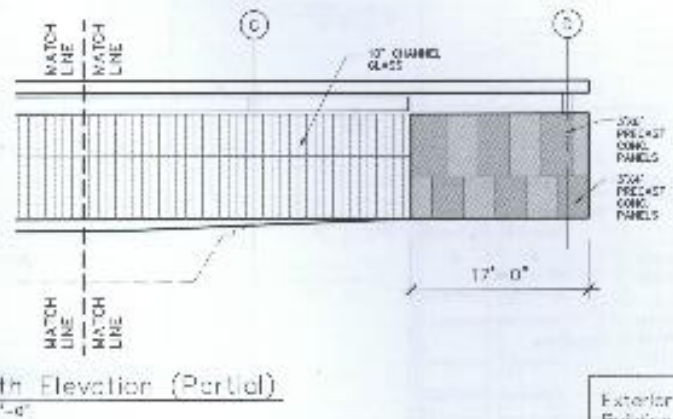
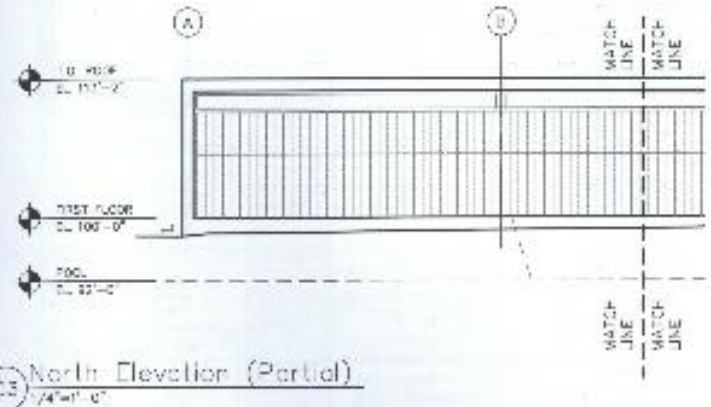
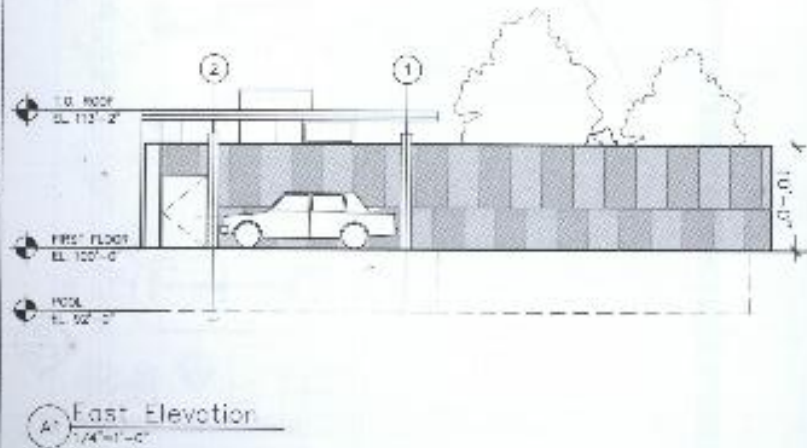
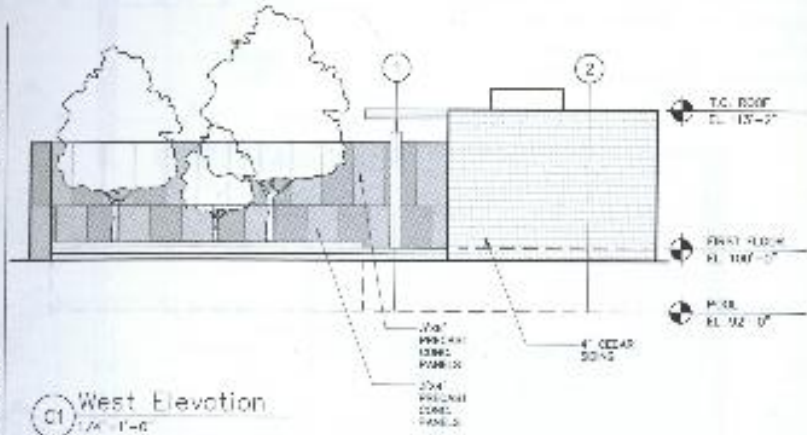


FIRST FLOOR PLAN



Building Elevations

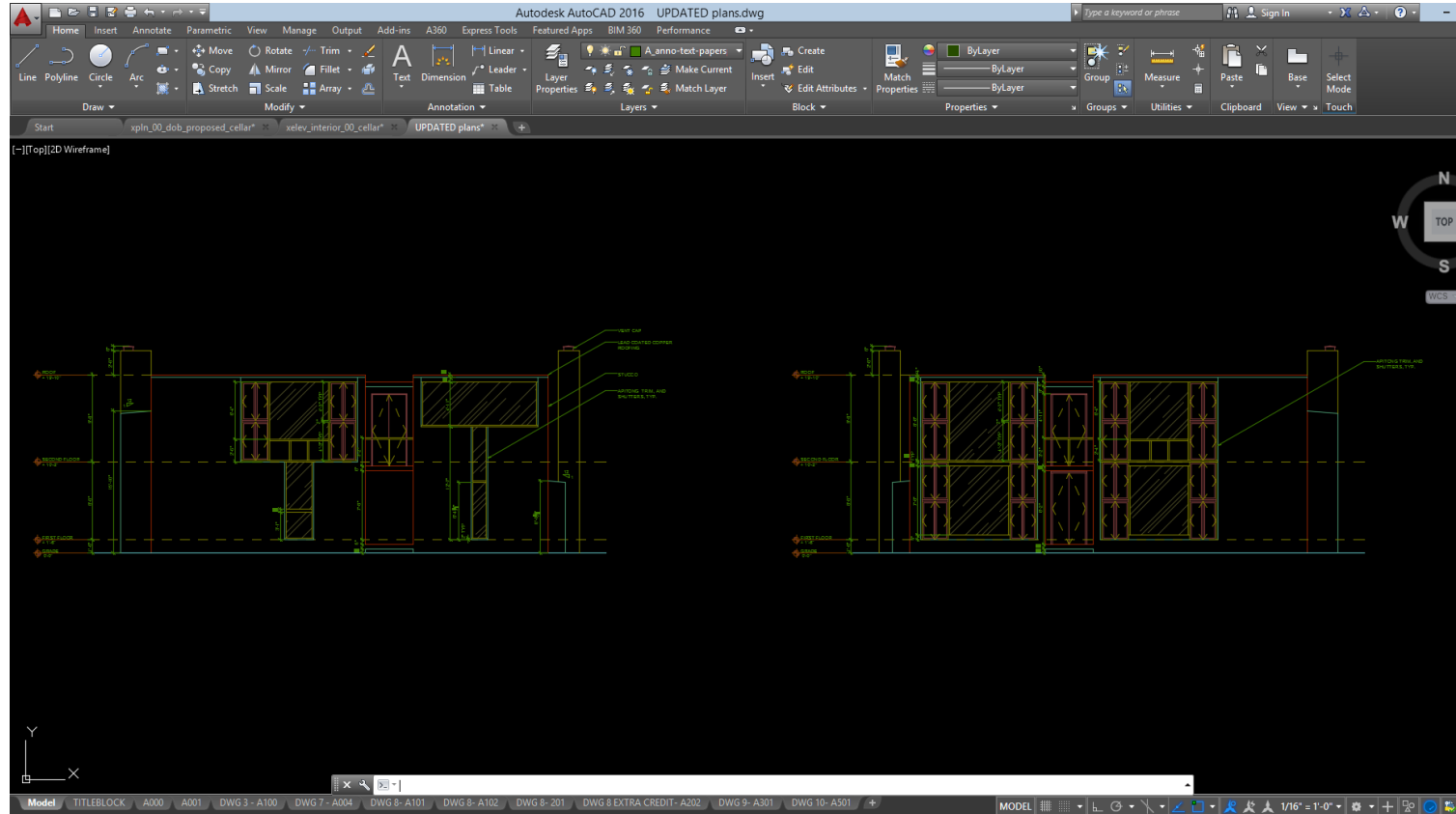
Building elevations depict the exterior conditions of the building, describing materials and important vertical dimensions. In instances where a drawing is too large to fit on a standard sheet, it must be broken apart and continued on the same sheet or another sheet, requiring the use of match lines for alignment.



Exterior Building Elevations

Autocad Techniques

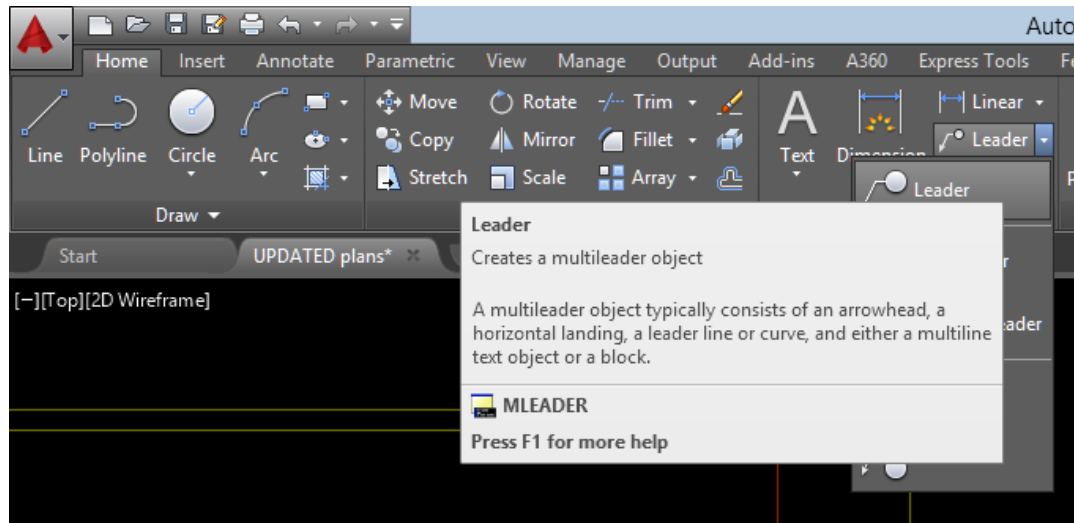
- Leaders
- Notes
- Hatch



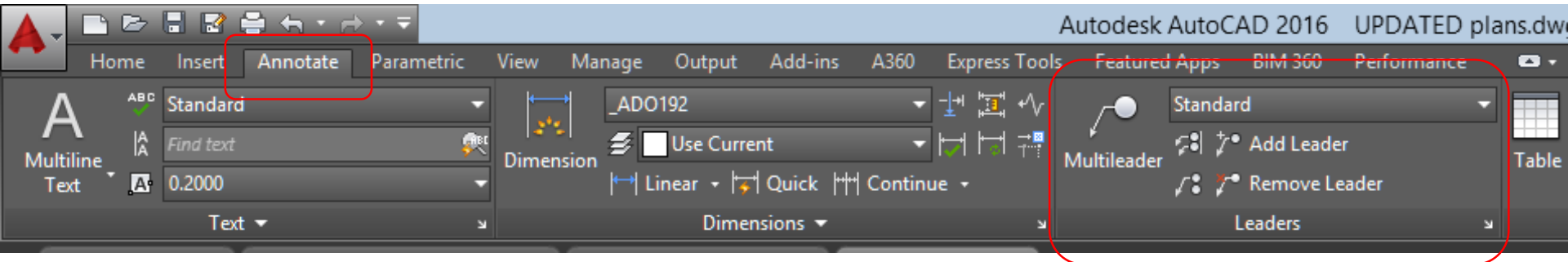
Tools we have learned:

- Line and X-Lines
- Offset
- Extend/Trim
- Fillet
- Copy/Paste
- Ortho Mode and Polar Tracking
- Object Snap
- Layers and Color Styles
- Line-types
- Dimensioning
- Paper Space vs Model Space
- Viewports
- Arc
- Ellipse
- Blocks

Leaders and Notes



Leader creates a line the connect annotation to a feature. It is used for adding *notes* to a drawing.

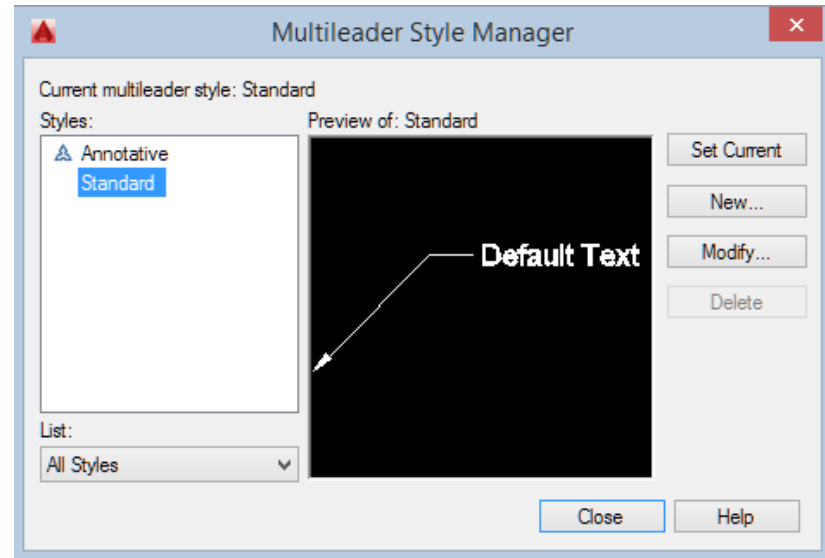


Resources: <https://knowledge.autodesk.com/support/autocad/learn-explore/caas/CloudHelp/cloudhelp/2016/ENU/AutoCAD-Core/files/GUID-BC466DEE-ACD8-419A-B017-AB3065336AD7-htm.html>

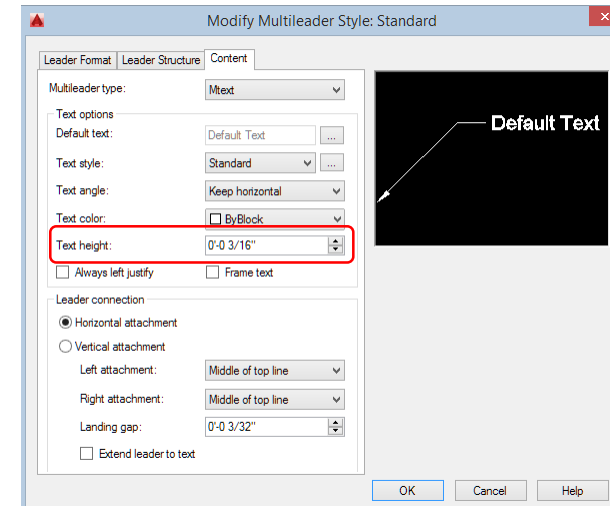
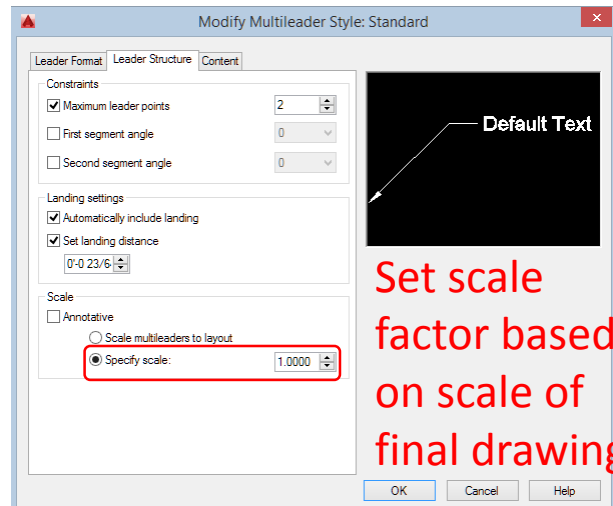
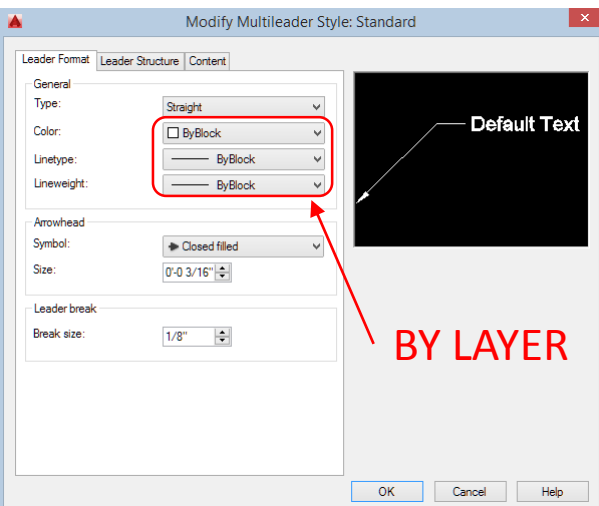
Multileader Editor

Multileader Style Manager allows you to create and modify styles used to create multileader objects.

Access: Down arrow in Leaders window.



Resources: <https://knowledge.autodesk.com/support/autocad-civil-3d/learn-explore/caas/documentation/CIV3D/2012/ENU/filesACR/WS1a9193826455f5ff104d7f510f19418261-62b0-htm.html>



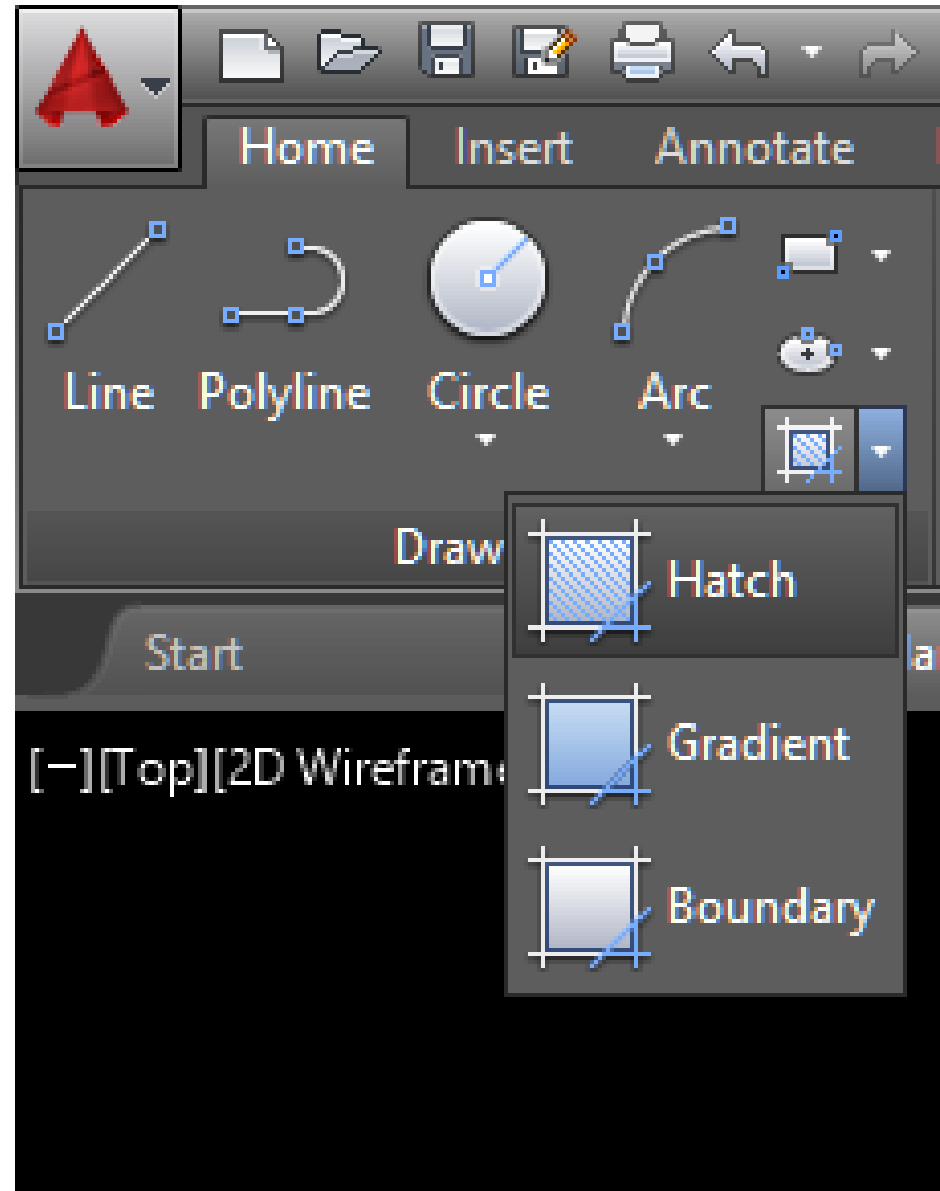
Hatches

Hatches are used to fill an enclosed area or selected object with a pattern. Use *hatches* in section views to indicate specific materials. Also used to add patterns or shading to elevations or plans.

Access: Click hatch button in Home tab or type “h”.

Resources:

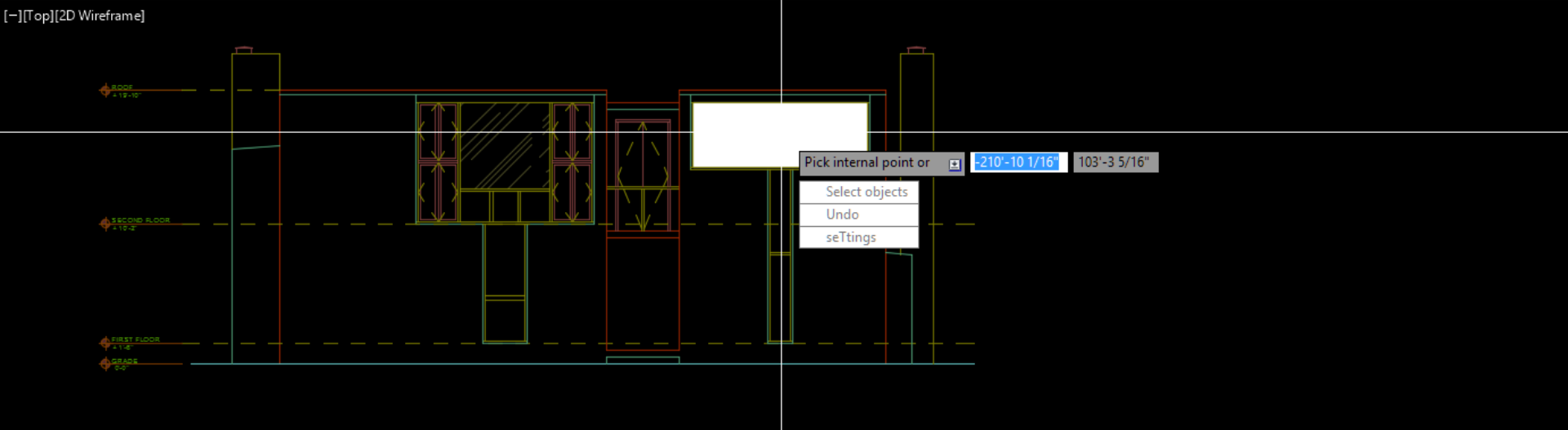
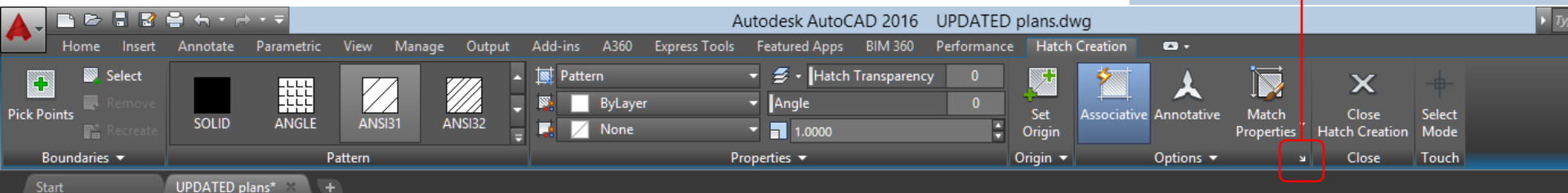
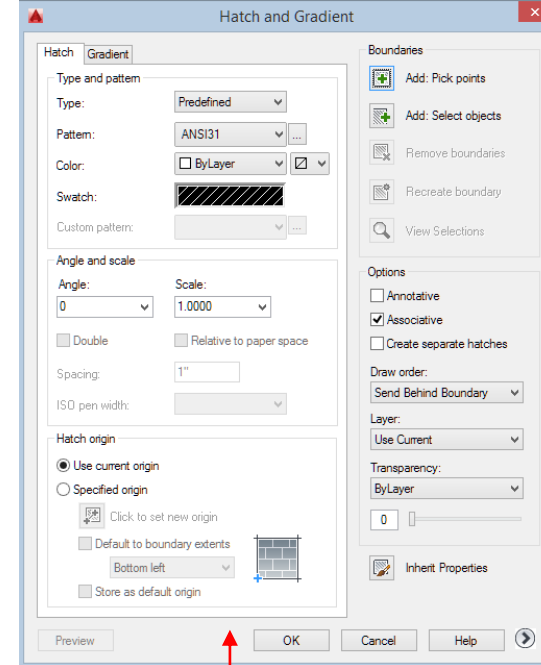
<https://knowledge.autodesk.com/support/autocad/learn-explore/caas/CloudHelp/cloudhelp/2015/ENU/AutoCAD-Core/files/GUID-27C104F2-B687-4025-B50B-A58E37329832-htm.html>



Edit Hatches

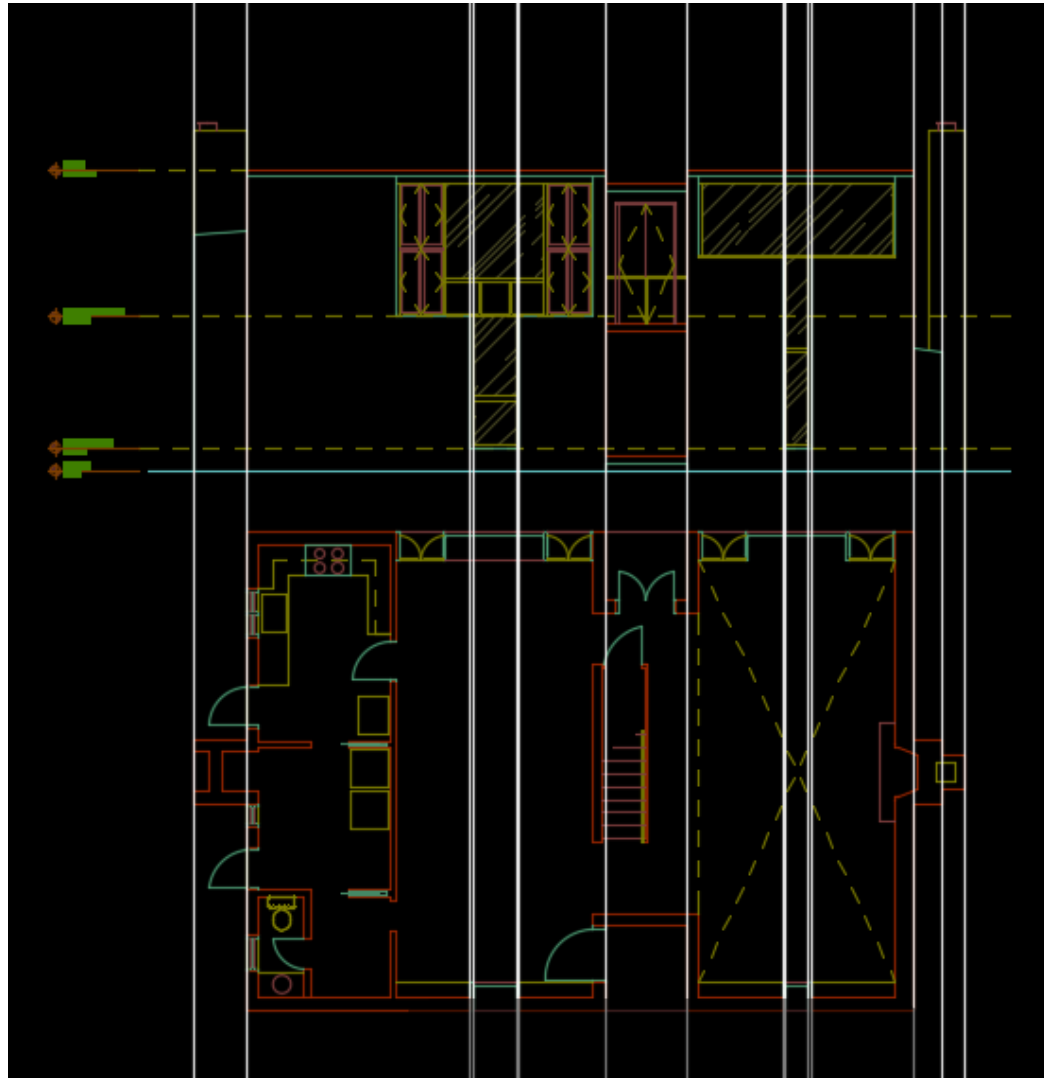
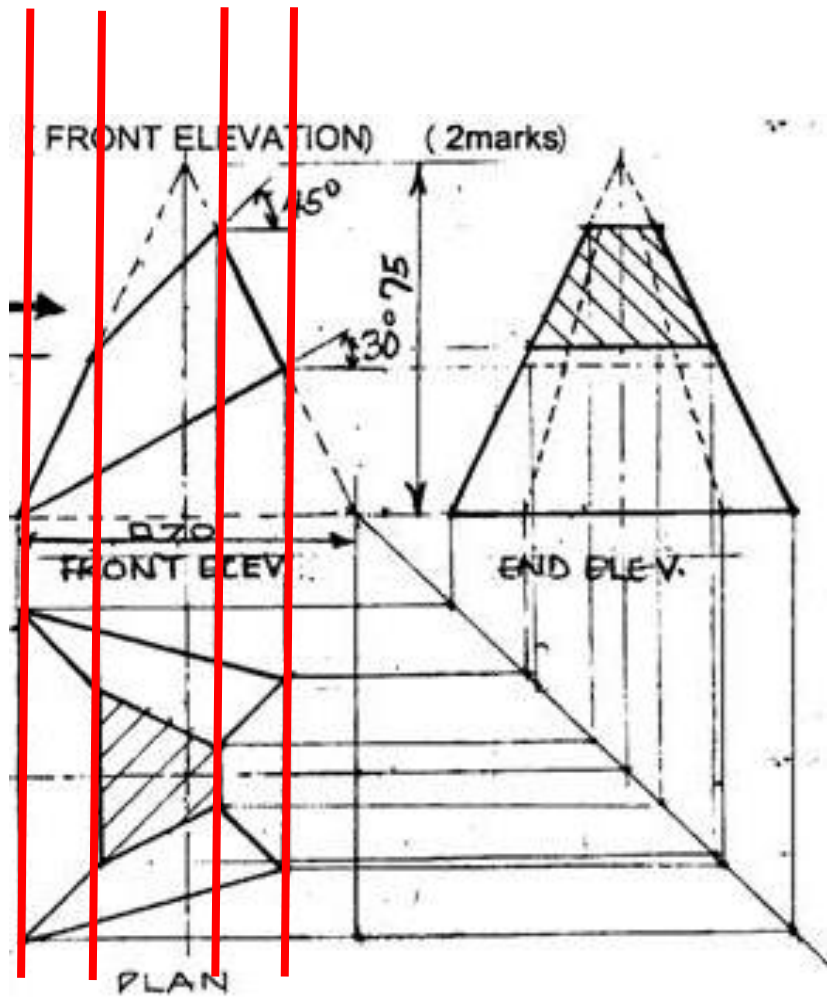
Hatch Creation tab pops up when the hatch command is active or when a hatch is selected. Here you can edit hatch patterns, scales, angles, origin and definition.

Access: Click Option down arrow in Hatch Creation tab or type “he”.



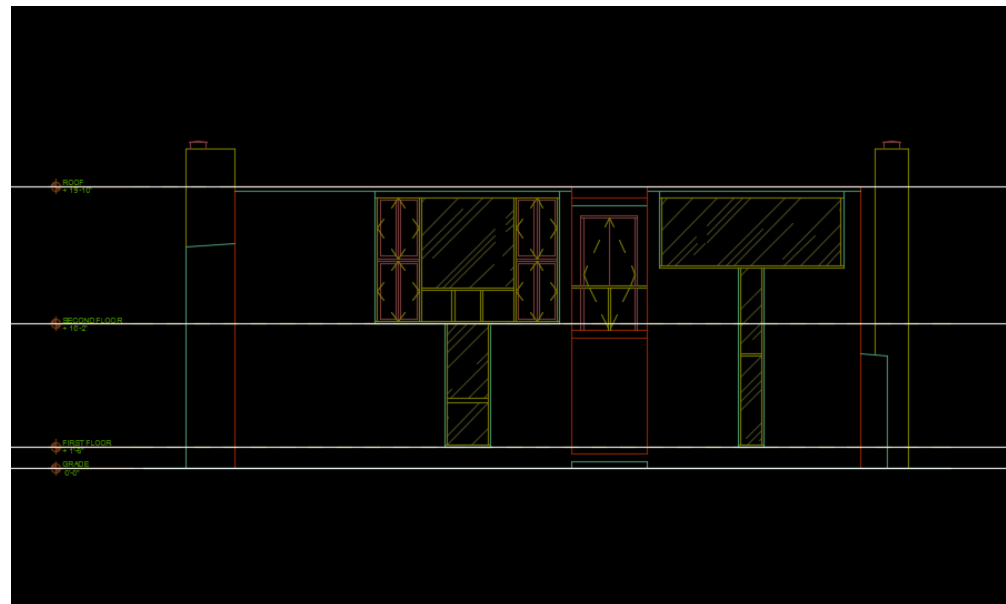
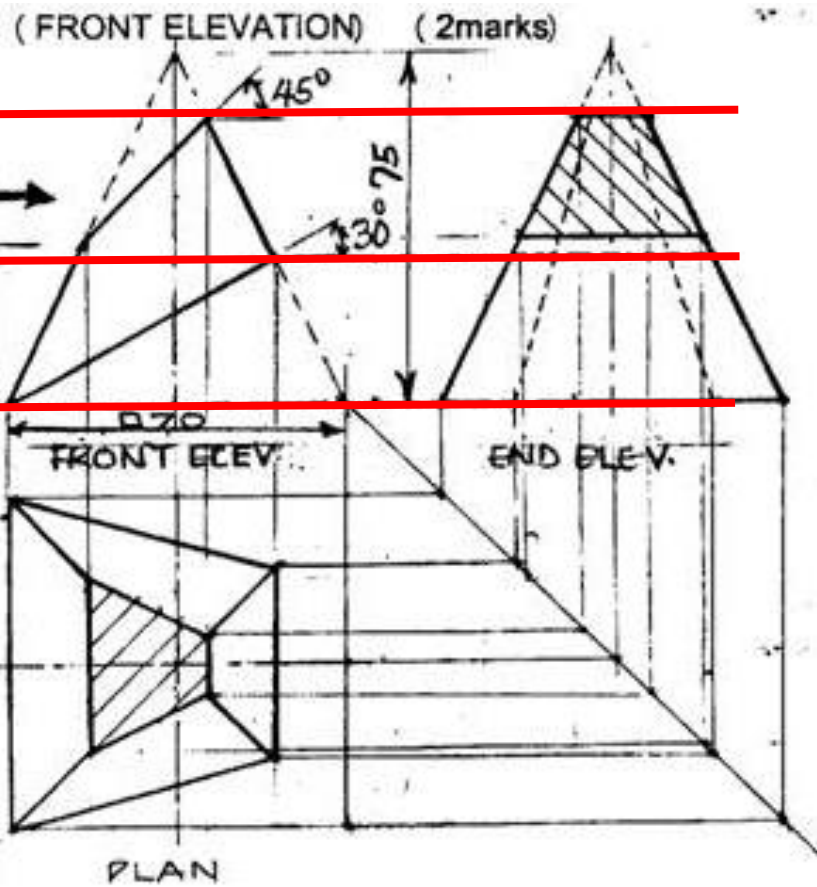
Orthographic Projection: Process

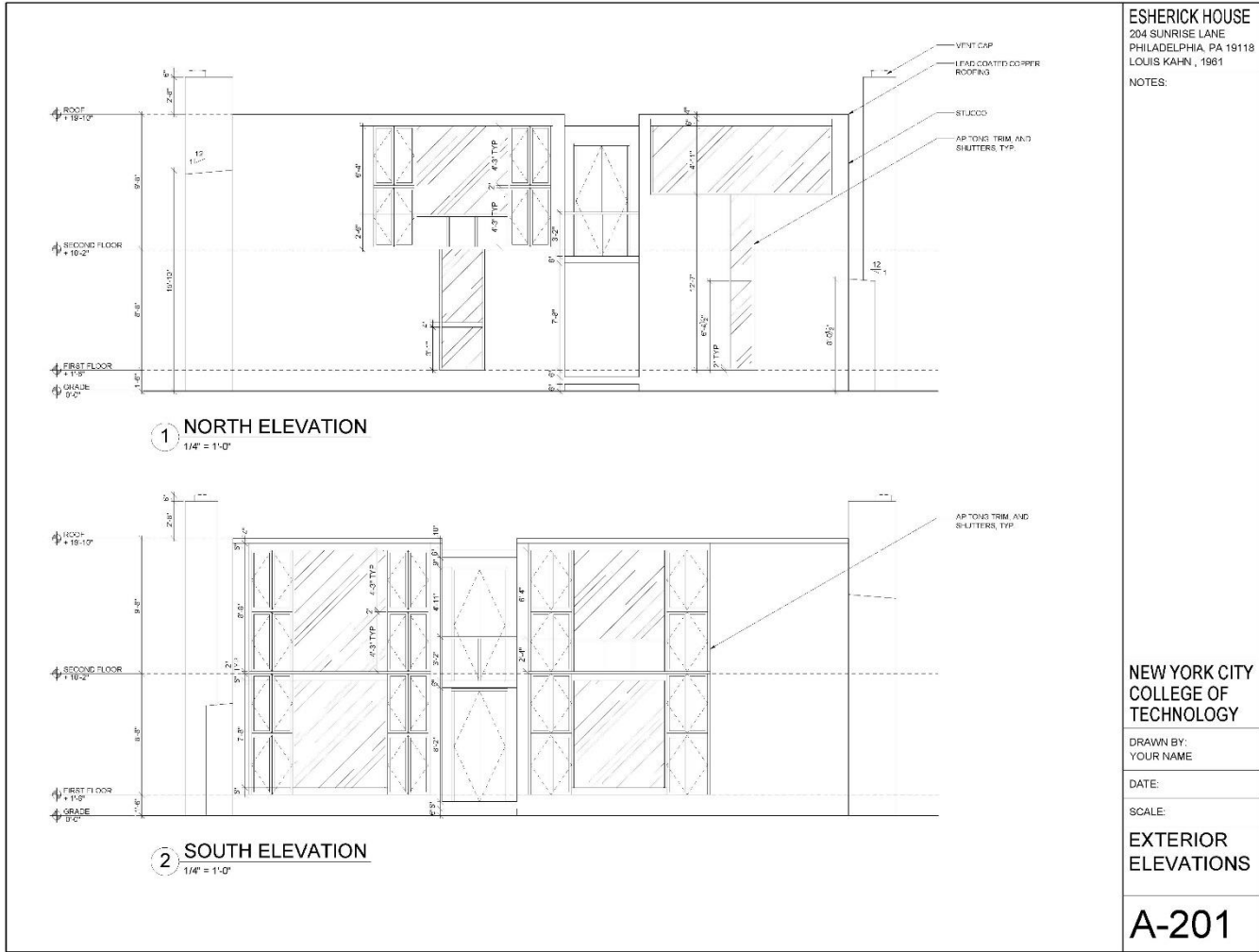
Vertical Lines: Use *X-Lines* to project features from floor plans to elevations



Orthographic Projection: Process

Horizontal Lines: Create *X-Lines* to project building regulating lines (floor heights, dimensions)





Process:

1.Regulating Lines

- a)Building Control Lines
- b)Overall Dimensions

2.Components

- a)Walls
- b)Doors
- c)Windows
- d)Fixtures

3.Annotation

- a)Symbols
- b)Dimensions
- c)Notes

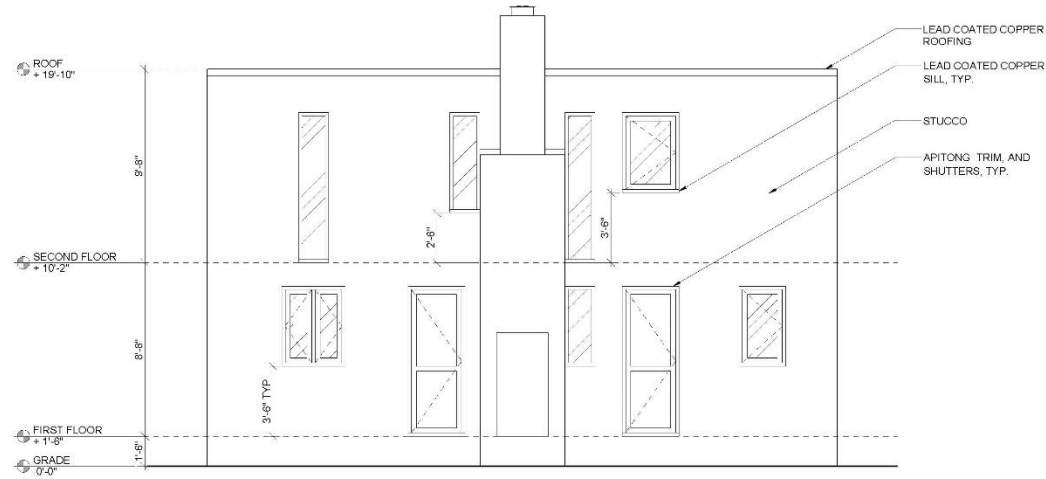
4.Sheet

- a)Titles
- b)Titleblock

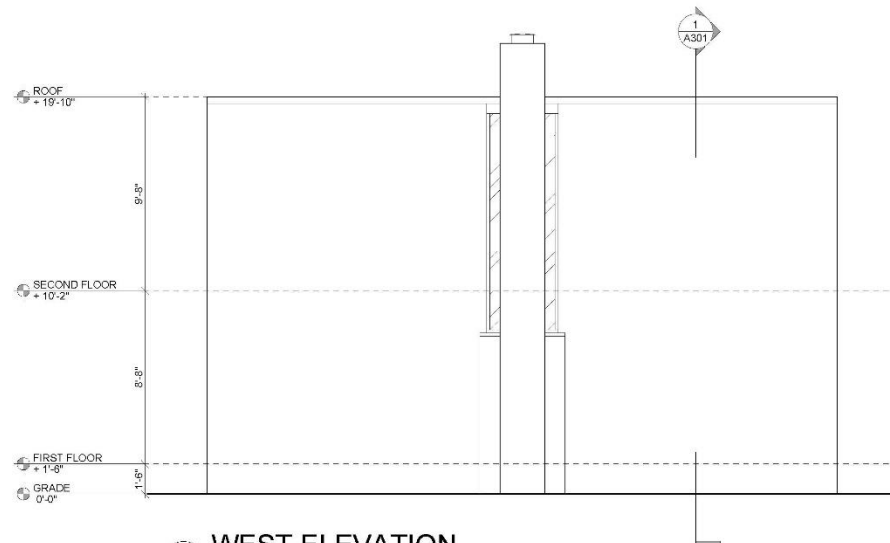
Extra Credit!!!

ESHERICK HOUSE
 204 SUNRISE LANE
 PHILADELPHIA, PA 19118
 LOUIS KAHN, 1961

NOTES:



1 EAST ELEVATION
 1/4" = 1'-0"



2 WEST ELEVATION
 1/4" = 1'-0"

NEW YORK CITY
 COLLEGE OF
 TECHNOLOGY

DRAWN BY:
 YOUR NAME

DATE:

SCALE:

EXTERIOR
 ELEVATIONS

A-202

Assignment Specifications:

- Email your progress drawing at the end of this class. *You must use your City Tech email address and email to the gmail submission email address. Include the assignment title in the email subject line.
- Name files: Last Name First Name – Assignment # Assignment Title.
- Example: Anderson Nicole – Assignment 8 First and Second Floor Plans
- Email final submission *BEFORE THE START OF THE NEXT CLASS*
- Submit 8.5"x11" plot of each drawing *AT THE START OF THE NEXT CLASS* - bind/staple as required