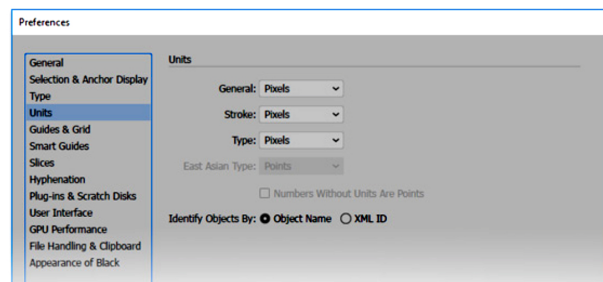
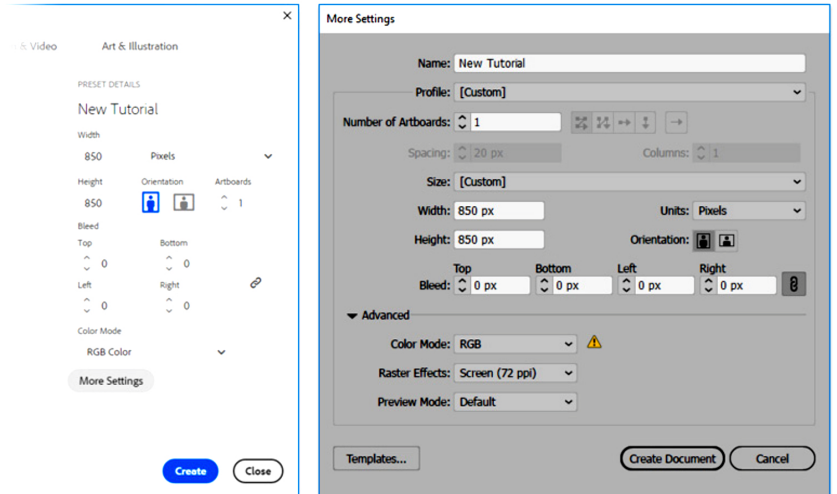


## Peel Text Effect in Adobe Illustrator

### 1. How to Create a New Document and Set Up a Grid

Hit **Control-N** to create a new document. Select **Pixels** from the **Units** drop-down menu, enter **850** in the width and height boxes, and then click that **More Settings** button. Select **RGB** for the **Color Mode**, set the **Raster Effects** to **Screen (72 ppi)**, and then click that **Create Document** button. Do not forget to set the unit of measurement to pixels from **Edit > Preferences > Units**

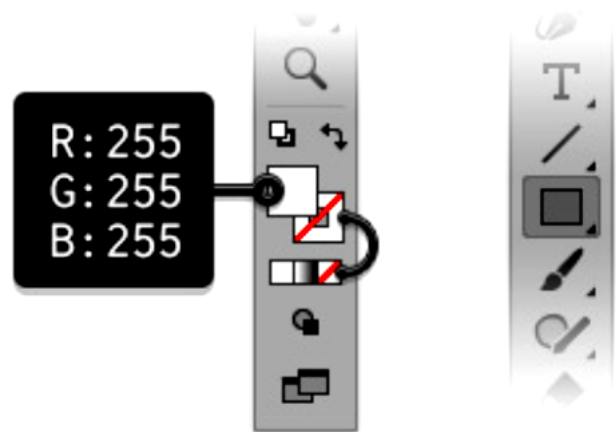


### 2. How to Create the Background and Add the Text

#### Step 1

Pick the **Rectangle Tool (M)** and focus on your Toolbar. Remove the color from the stroke, and then select the fill and set its color to white (**R=255 G=255 B=255**).

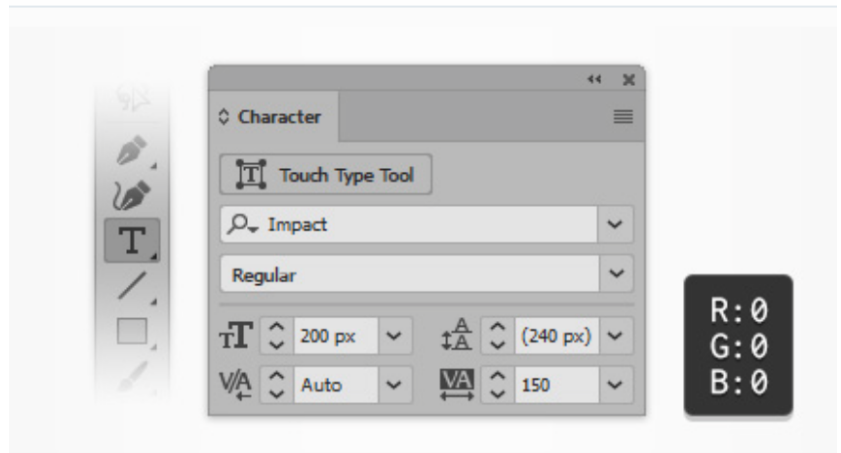
Create an **860 px** square and make sure that it covers your entire artboard.



## Step 2

Pick the **Type Tool (T)** and open the **Character** panel (**Window > Type > Character**). Select the **Impact** font (or any bold font that you prefer), and set the size to **200 px** and the tracking to **150 px**.

Move to your artboard, click on it, and add your piece of text about as shown on right. Make it black.



**PEEL**  
**OFF!**

1

**PEEL**  
**OFF!**

2

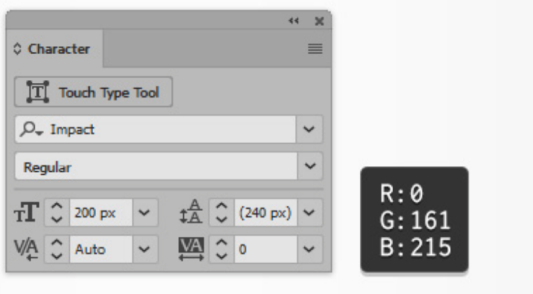
**PEEL**  
**OFF!**

3

## Step 3

Use the same tool and character attributes to create the first letter of your text. Make it blue and place it right above the black one.

Keep adding separate blue letters until you cover all your black text. Once you're done, go to the **Layers** panel (**Window > Layers**) and remove your black text.



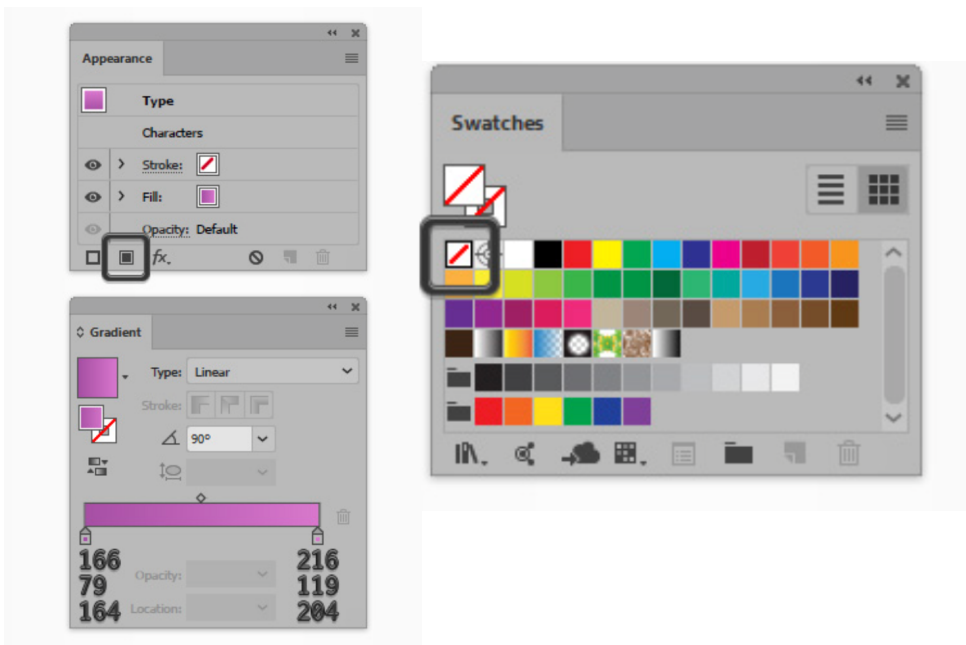
**PEEL**  
**OFF!**

### 3. How to Create a Peeled Effect

#### Step 1

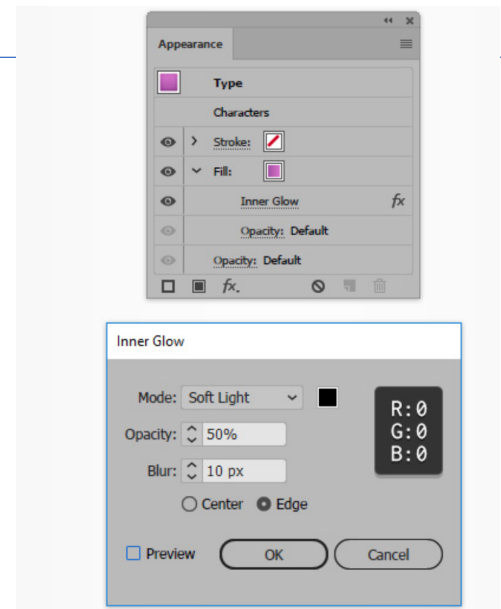
Select one of your letters, focus on the **Swatches** panel (**Window > Swatches**), and click that **[None]** swatch to remove the white fill. Move to the **Appearance** panel (**Window > Appearance**) and add a new fill using the **Add New Fill** button.

Select the new fill and use the linear gradient shown below (**Window > Gradient**).



#### Step 2

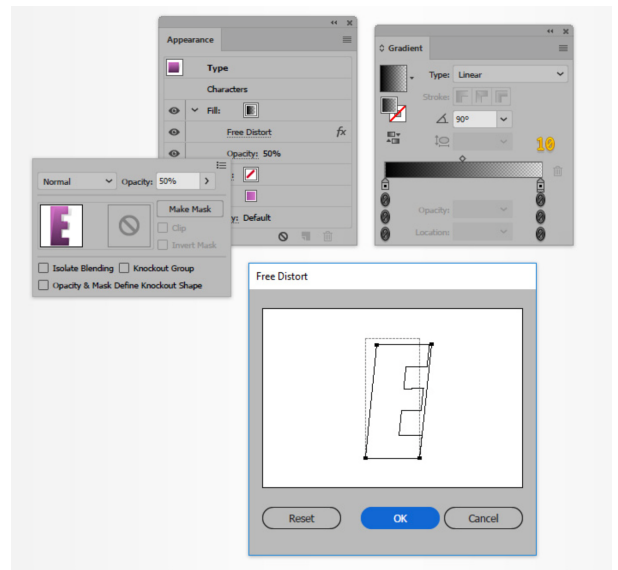
Make sure that your colored letter is still selected and keep focusing on the **Appearance** panel. Select that fill and go to **Effect > Stylize > Inner Glow**. Enter the attributes shown in the right image and then click that **OK** button.



### Step 3

Make sure that your colored letter is still selected and keep focusing on the **Appearance** panel. Add a second fill using that same **Add New Fill** button and drag it to the top of the panel, above the existing fill and stroke.

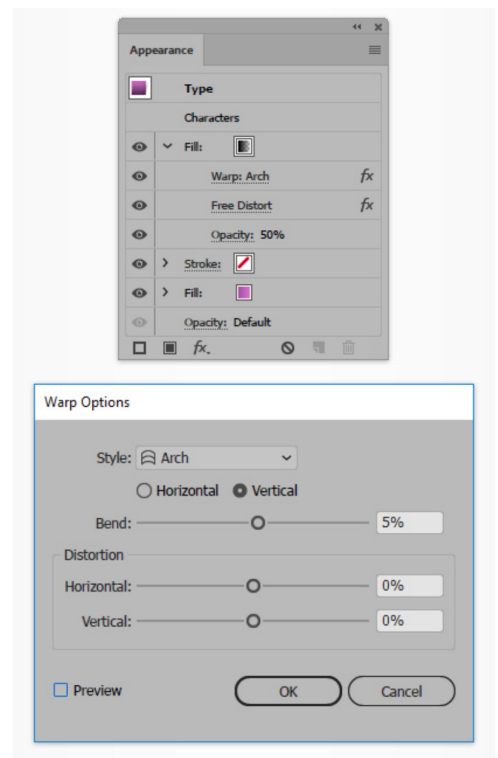
Select this new fill and lower its **Opacity** to **50%**. Apply the linear gradient shown below and then go to **Effect > Distort & Transform > Free Distort**. Drag those points as shown below and then click that **OK** button. Keep in mind that the yellow zero from the **Gradient** image stands for **Opacity** percentage.



### Step 4

Make sure that your colored letter is still selected and keep focusing on the **Appearance** panel. Reselect that top fill and go to **Effect > Warp > Arch**. Enter the attributes shown in the right image and then click that **OK** button.

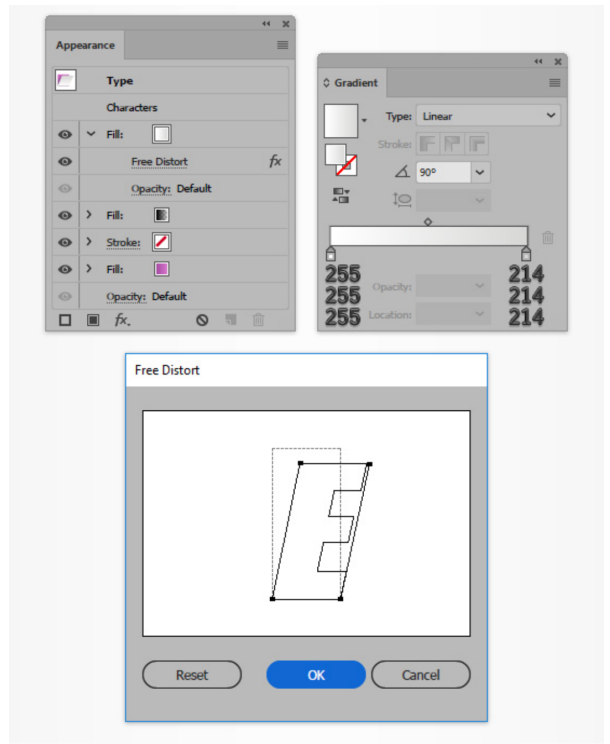
PEEL  
OFF!



### Step 5

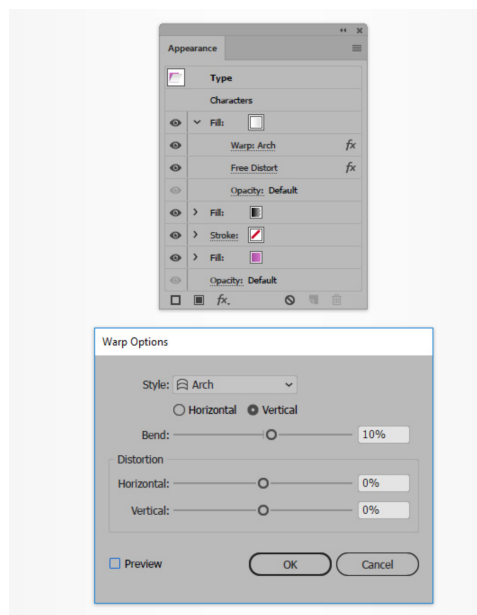
Make sure that your colored letter is still selected and keep focusing on the **Appearance** panel. Add a third fill and drag it to the top of the panel.

Select this new fill, apply the linear gradient shown below and then go to **Effect > Distort & Transform > Free Distort**. Drag those points as shown on the right and then click that **OK** button.



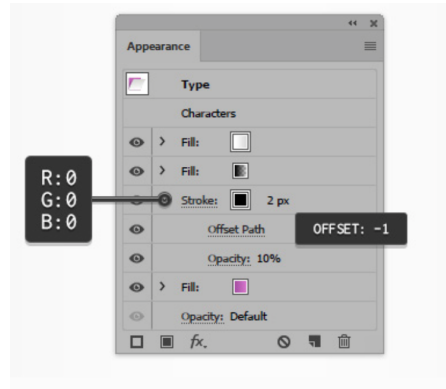
### Step 6

Make sure that your colored letter is still selected and keep focusing on the **Appearance** panel. Reselect that top fill and go to **Effect > Warp > Arch**. Enter the attributes shown in the right image and then click that **OK** button.



### Step 7

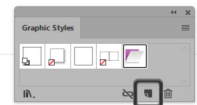
Make sure that your colored letter is still selected and keep focusing on the **Appearance** panel. Select the stroke and make it black (**R=0 G=0 B=0**). Lower its **Opacity** to **10%**, set the **Weight** to **2 px**, and then go to **Effect > Path > Offset Path**. Enter a **-1 px Offset** and then click that **OK** button.



## 4. How to Save and Use a Graphic Style

### Step 1

Make sure that your colored letter is still, open the **Graphic Styles** panel (**Window > Graphic Styles**) and click that **New Graphic Style** button to save the attributes of your selected text as a graphic style. Select one of your blue letters and simply apply your graphic style from the **Graphic Styles** panel.

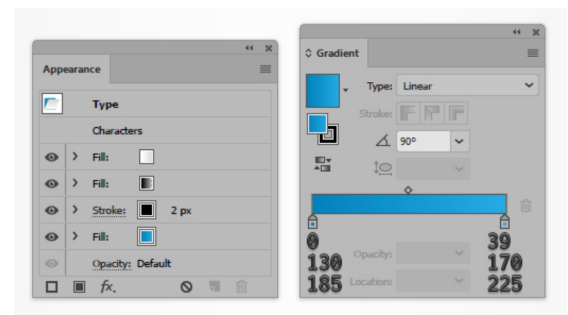


### Step 2

Finally, you can always replace that purple gradient with a different one. Here are some possibilities.

In some cases, you might have to adjust some of the applied effects. One example

ADOBE ILLUSTRATOR PEEL TEXT EFFECT



would be the exclamation mark, where you will have to slightly lower the **Bend** from those **Warp** effects.

