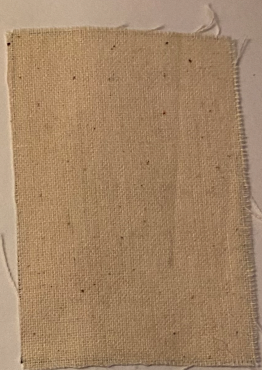


The Textile Kit™

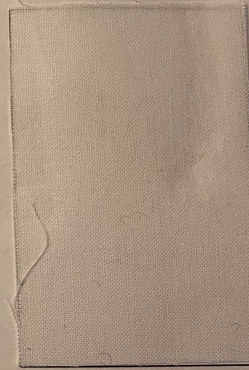
Sample # 1
Sample Name Unbleached muslin
Fiber Content 100% cotton
Main Features Woven fabric (natural color)

Other Notes Fabrication type impacts textile performance.



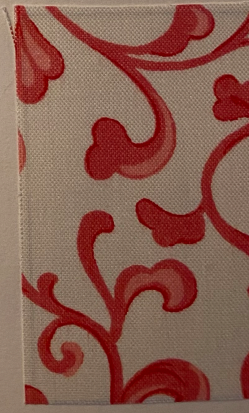
Sample # 2
Sample Name Roc-lon® drapery lining
Fiber Content 100% cotton
Main Features Bleached / water resistant finish

Other Notes Finishing impacts textile performance / Roc-lon® is a registered trademark of Rockland Industries.



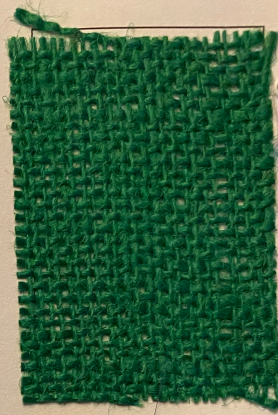
Sample # 3
Sample Name Glazed chintz
Fiber Content 100% cotton
Main Features Printed and glazed

Other Notes Printing and finishing impact textile performance.

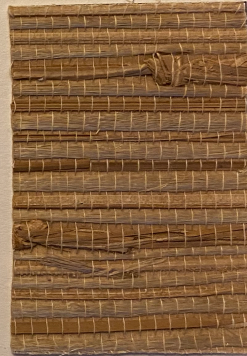


The Textile Kit™

Sample # 10
Sample Name Burlap
Fiber Content 100% jute
Main Features Natural cellulose fibers
Other Notes Bast fiber from stem of jute
plant, ancient fiber



Sample # 11
Sample Name Grasscloth wallpaper
Fiber Content 100% natural seagrass
Main Features Natural cellulose material
Other Notes Seagrass leaves / paper backed



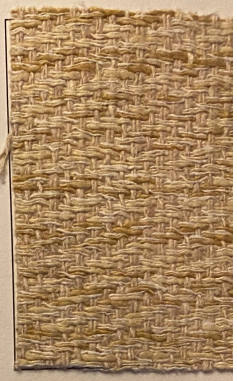
Sample # 12
Sample Name Wool gauze
Fiber Content 100% wool
Main Features Natural protein fibers
Other Notes from sheep



The Textile Kit™

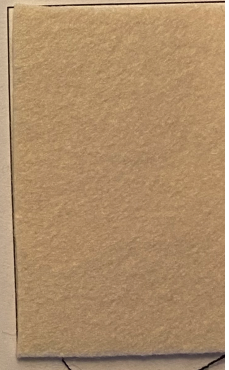
Sample # 13
Sample Name Wool felt ("true" felt)
Fiber Content 95-99% wool / 1-5% other
Main Features Natural protein fibers

Other Notes From sheep, fibers naturally "felt" together



Sample # 14
Sample Name Wild silk
Fiber Content 100% silk
Main Features Natural protein fibers

Other Notes From wild silkworms, staple fibers



Sample # 15
Sample Name China silk (made of silk)
Fiber Content ~~Natural protein fibers~~ 100% silk
Main Features Natural protein fibers

Other Notes Cultivated silk, from domesticated silk worms, filament fibers

