

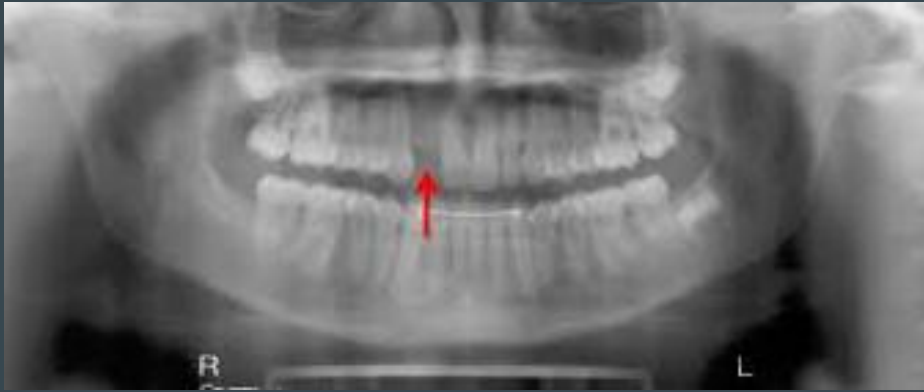
# Microdontia



## Peg-Shaped-Lateral

Michelle Ramirez

***Microdontia*** is a condition in which one or more teeth appear smaller than normal. In the generalized form, all teeth are involved. In the localized form, only a few teeth are involved.



The most common teeth affected are the upper lateral incisors and third molars.







*Macrodonia*





***Macrodontia*** is a type of localized gigantism in which teeth are larger than normal for the particular type(s) of teeth involved. The three types of macrodontia are true generalized macrodontia, relative generalized macrodontia, and macrodontia of a single tooth.









