

# GARMENTS BY DESIGNERS

PRESENTED BY: MORELIA PENA

CHARLES F. WORTH  
19TH C. BALLGOWN

TITLE: BALL GOWN



DESIGNER: CHARLES F. WORTH

Date: ca. 1872

Material: Silk

URL: [MET](#)

PAUL POIRET  
HAREM TROUSERS

TITLE: FANCY DRESS CUSTOME



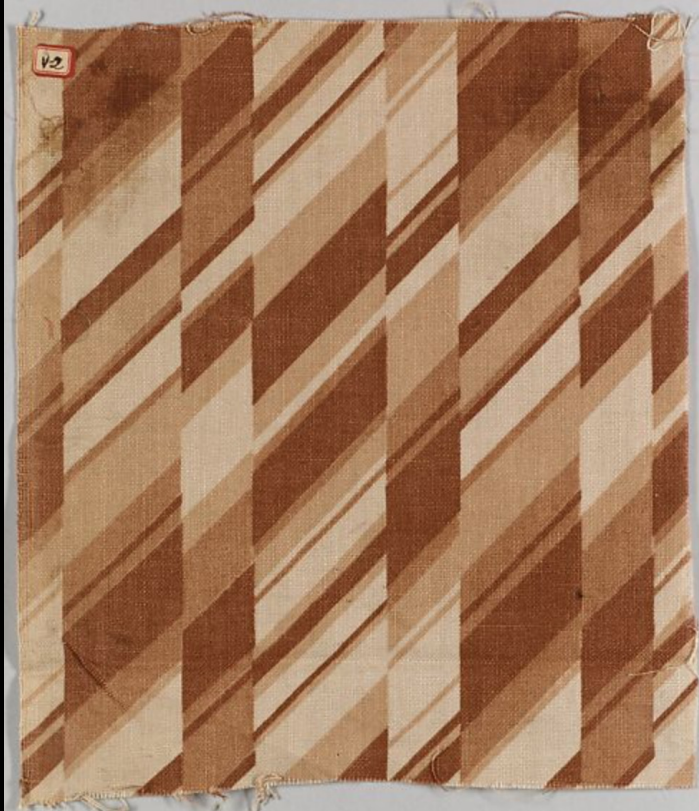
DESIGNER: PAUL POIRET

Date: 1911

Material: Metal, Silk, Cotton

URL: [MET](#)

WIENER WERKSTATTE  
TITLE: TEXTILE SAMPLE



DESIGNER: WIENER WERKSTATTE  
Date: 1910-1928  
Material: Cotton  
URL: [MET](#)

BAUHAUS  
TITLE: TEXTILE SAMPLE IN RED, BLACK AND WHITE



DESIGNER: BAUHAUS  
Date: 1919-1933  
Material: Textile fibers  
URL: [HARVARD](#)

JEAN PATOU  
1920s EVENING DRESS

TITLE: EVENING DRESS



DESIGNER: JEAN PATOU  
Date: ca. 1922  
Material: Metal, Glass  
URL: [MET](#)

GABRIELLE "COCO" CHANEL  
1920s GARÇON-STYLE ENSEMBLE

TITLE: ENSEMBLE



DESIGNER: GABRIELLE COCO CHANEL  
Date: ca. 1927  
Material: Silk  
URL: [MET](#)

MADELEINE VIONNET  
1930s BIAS CUT  
TITLE: EVENING DRESS



DESIGNER: MADELEINE VIONNET  
Date: 1936-1937  
Material: Silk  
URL: [MET](#)

MARIANO FORTUNY  
DELPHOS DRESS

TITLE: "DELPHOS"



DESIGNER: MARIANO FORTUNY  
Date: 1920-1930s  
Material: Silk, Glass  
URL: [MET](#)

ELSA SCHIAPARELLI  
COLLABORATION WITH JEAN COCTEAU

TITLE: EVENING JACKET



DESIGNER: ELSA SCHIAPARELLI  
Date: 1937  
Material: Linen, Metal  
URL: [MET](#)

ELSA SCHIAPARELLI  
1940s SUIT

TITLE: SUIT



DESIGNER: ELSA SCHIAPARELLI  
Date: 1938  
Material: Synthetic, Silk  
URL: [MET](#)

CHRISTOBAL BALENCIAGA  
1950s SILK & LACE EVENING DRESS  
TITLE: EVENING DRESS



DESIGNER: CHRISTOBAL BALENCIAGA  
Date: 1951  
Material: Silk  
URL: [MET](#)

CHRISTOBAL BALENCIAGA  
BALLOON STYLE JACKET  
TITLE: EVENING COAT



DESIGNER: CHRISTOBAL BALENCIAGA  
Date: 1950-1951  
Material: Silk  
URL: [MET](#)

CHRISTIAN DIOR  
DAY SUIT FOR WOMEN  
TITLE: "BAR"



DESIGNER: CHRISTIAN DIOR  
Date: 1947  
Material: Silk  
URL: [MET](#)

CHRISTIAN DIOR  
1950s EVENING GOWN WITH FLORAL MOTIF  
TITLE: MAY



DESIGNER: CHRISTIAN DIOR  
Date: 1953  
Material: Silk  
URL: [MET](#)



NORMAN NORELL  
SAILOR DRESS

TITLE: "DAY DRESS"



DESIGNER: NORMAN NORELL  
Date: 1947  
Material: Wool Crepe, Mother-of-Pearl (belt)  
URL: [IMA](#)

NORMAN NORELL  
SEQUINED SHEATH

TITLE: "MERMAID"



DESIGNER: NORMAN NORELL  
Date: 1960s  
Material: Silk, Metal, Synthetic  
URL: [MET](#)

CLAIRE MCCARDELL  
HALTER NECK DRESS  
TITLE: DRESS



DESIGNER: CLAIRE MCCARDELL  
Date: ca. 1956  
Material: Cotton, Rubber, Metal  
URL: [MET](#)

CLAIRE MCCARDELL  
BEACH WEAR  
TITLE: BEACH WEAR



DESIGNER: CLAIRE MCCARDELL  
Date: ca. 1948  
Material: Wool  
URL: [MET](#)

EDITH HEAD  
CUSTOME FROM A FILM  
TITLE: LADY IN THE DARK



DESIGNER: EDITH HEAD  
Date: 1944  
Material: Fur, Sequins  
URL: [VAM](#)

GILBERT ADRIAN  
CUSTOME FROM A FILM

TITLE: DRESS



DESIGNER: GILBERT ADRIAN  
Date: 1942-1952  
Material: Silk, Metal  
URL: [MET](#)

