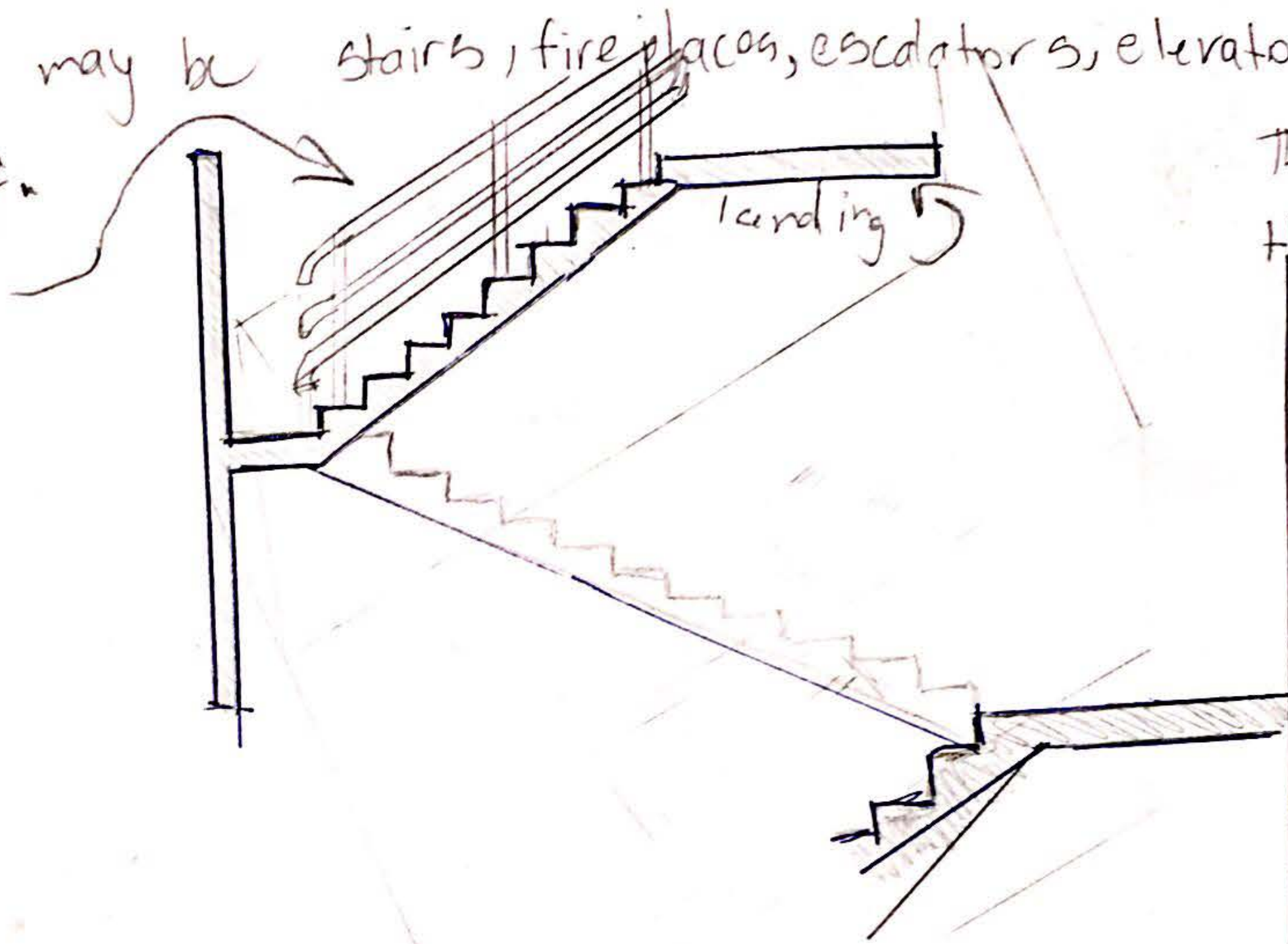


# 9

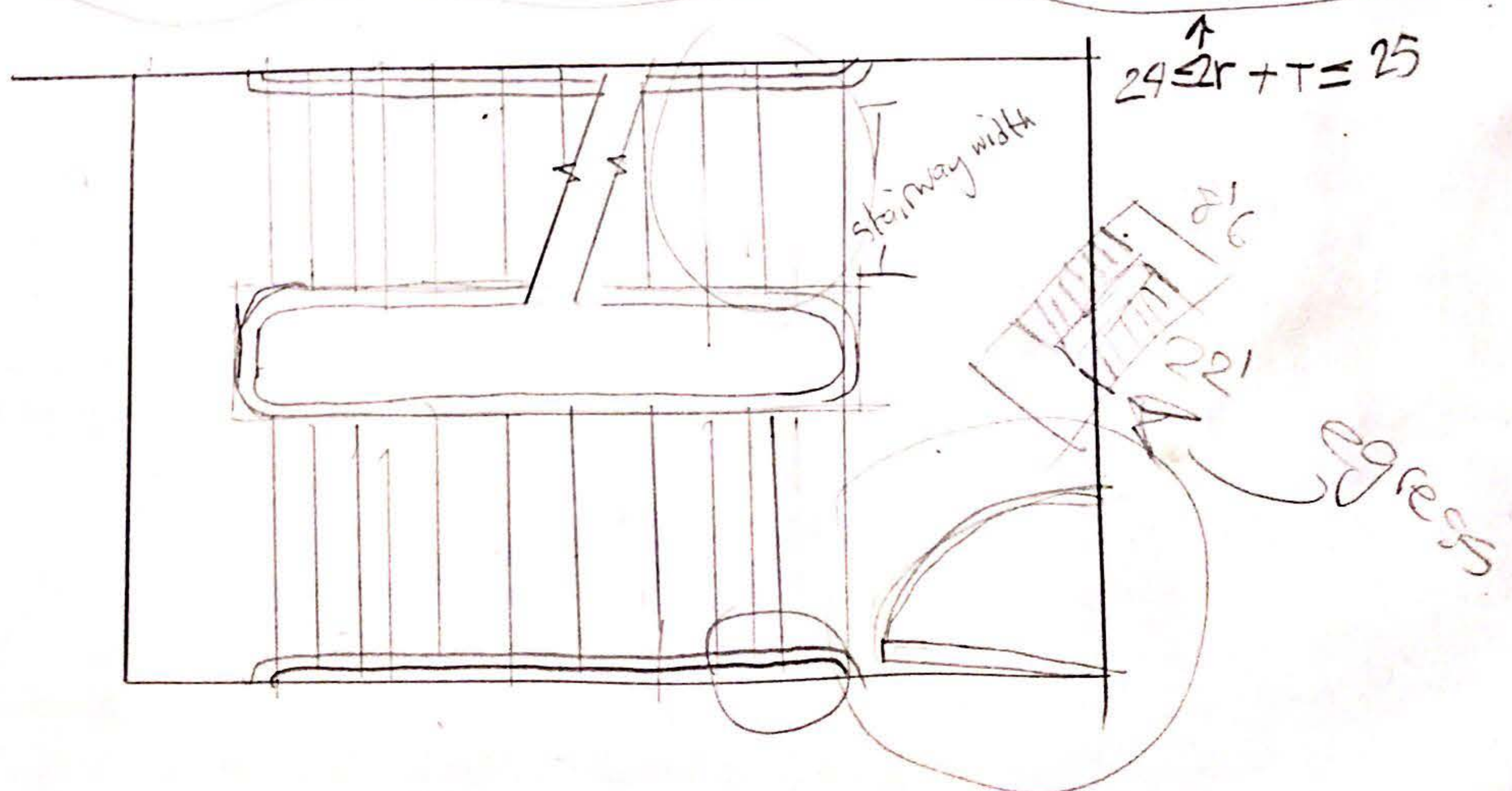
## Special Construction

- This chapter focuses on elements used in structures that separate entities due to their unique characteristics. Some of these things may be stairs, fire places, escalators, elevators, kitchens and more.

guardrail  
handrail



There are important things to understand about element used in a structure, for example in a stairway some things to consider may be stairway width, landings, ~~an~~ handrails, risers, threads, and nosings.

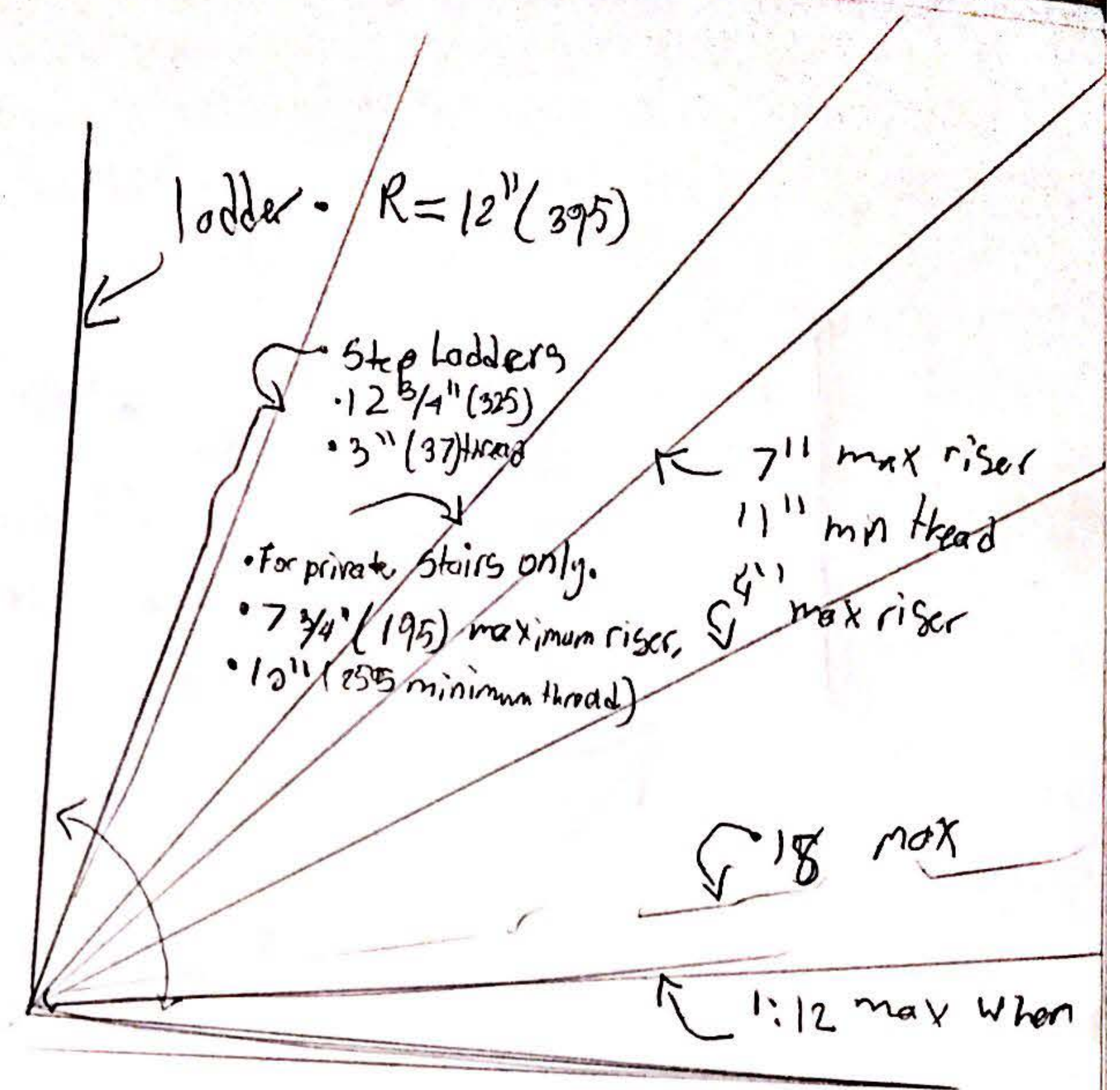


# Stair Design

- for safety all risers in a flight of stairs should be the same rise and all treads should have the same run.

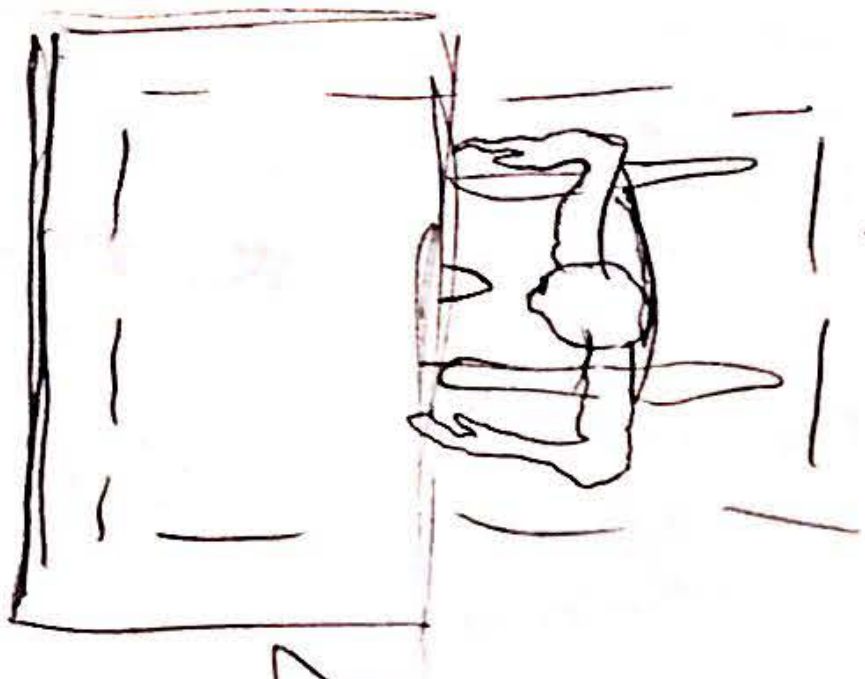
## Riser and Tread Dimensions

Riser inches(mm)	Tread inches(mm)
5(125)	15(380)
5-1/4(135)	14-1/2(370)
5-1/2(140)	14(355)
5-3/4(145)	13-1/2(340)
6(150)	13(330)
	12-1/2(320)
	12(305)
	11-1/2(290)
	11(280)



Part of an accessible route or an emergency egress system.

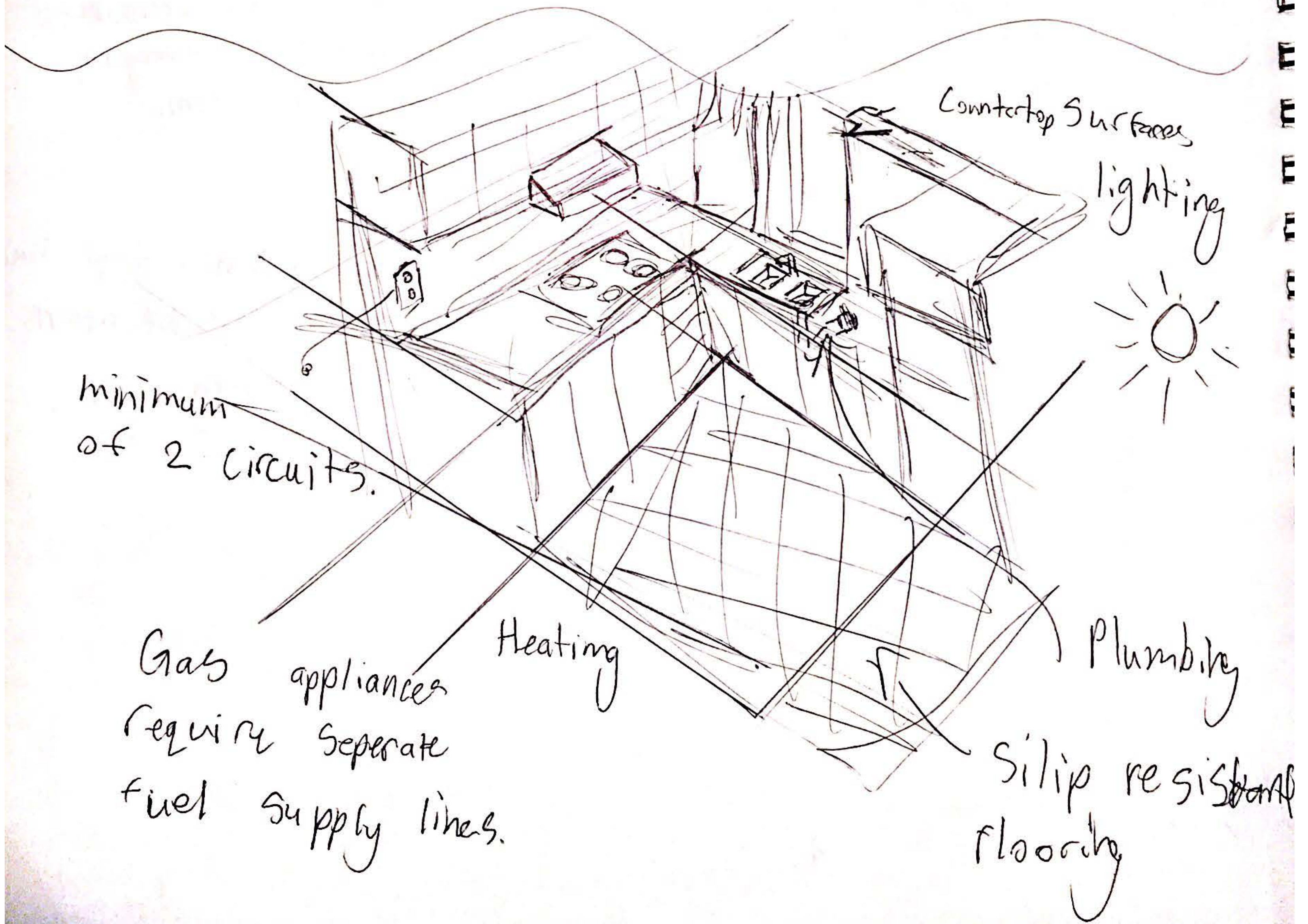
- Maximum height; minimum tread depth for accessible stairs and emergency egress.



30" x 48" min

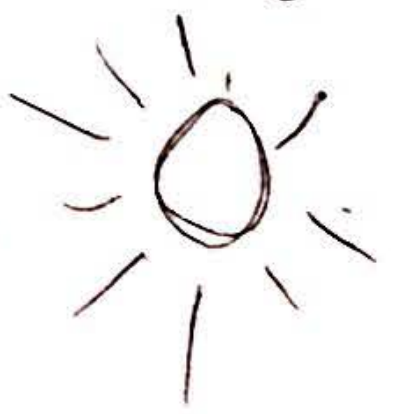
Clear floor space should be provided at sink, accessible work surface and appliances.

Clear floor space may extend to 19"



Countertop Surfaces

lighting



minimum of 2 circuits.

Gas appliances require separate fuel supply lines.

Heating

Plumbing

Slip resistant flooring